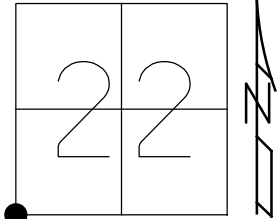


O.D.O.T. DISTRICT 2 SURVEY OFFICE (USE ONLY)

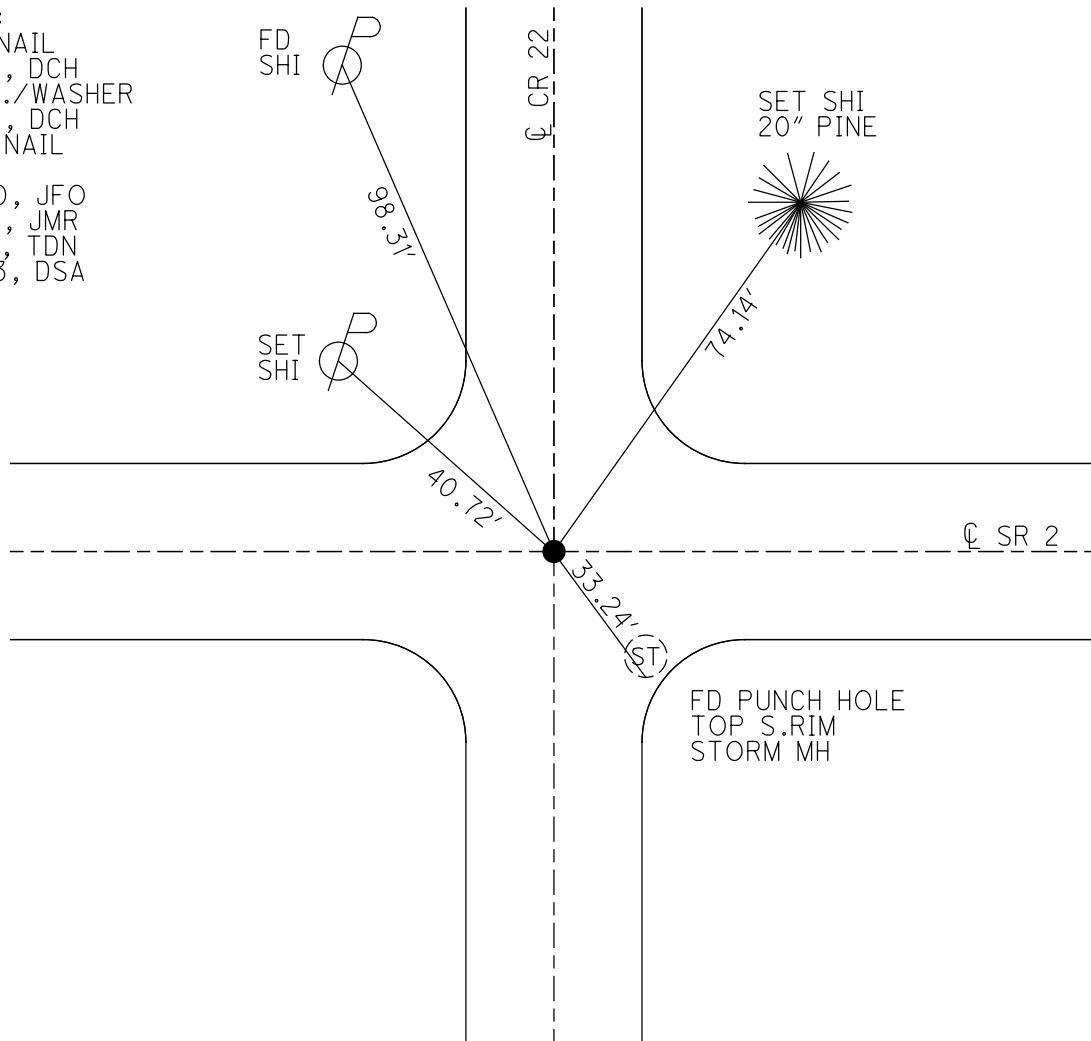
PERSONNEL _____ REFERENCE NO. 15 SHEET 1 OF 11
 NOTES AUBLE DATE 12/21/23 ROUTE SR 2
 H.C. NIESE WEATHER CLOUDY COUNTY FULTON
 R.C. ASTON TEMP. 40° TOWNSHIP GERMAN
 _____ SECTION 22
 DWG BY RHOADES PID PAVING TRAIN T 7 N R 5 E

TYPE MONUMENT MAG NAIL
 ON SURFACE - ~~BELOW~~ ON
 OFFSET C PAVEMENT ON LT : RT
- TO - EDGE PAVEMENT
 STATION: 336+51

HORZ.DATUM: NAD83 2011 GEOID: NAVD88 2012A
 GRID: NORTHING: 688736.778 EASTING: 1479248.449



RECORD:
 FD P.K.NAIL
 5/13/02, DCH
 SET P.K./WASHER
 7-26-02, DCH
 FD MAG NAIL
 REF15
 9/24/20, JFO
 3/05/21, JMR
 7/14/22, TDN
 12/21/23, DSA



O.D.O.T. DISTRICT 2 SURVEY OFFICE (USE ONLY)

PERSONNEL

REFERENCE NO. 15

SHEET 1 OF 11

NOTES NIESE DATE 3/5/21
 H.C. RHOADES WEATHER SUNNY
 R.C. _____ TEMP. 35°

ROUTE SR 2
 COUNTY FULTON
 TOWNSHIP GERMAN
 SECTION 22

DWG BY NIESE PID PAVETRAIN

T 7 N R 5 E

TYPE MONUMENT MAG NAIL

ON SURFACE - ~~BELOW~~ ON _____

OFFSET \varnothing PAVEMENT ON _____ LT : RT

- TO - EDGE PAVEMENT

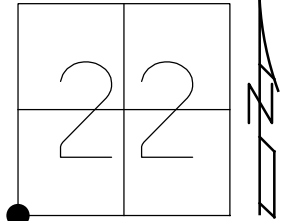
STATION: 336+51

HORZ. DATUM: NAD83 2011

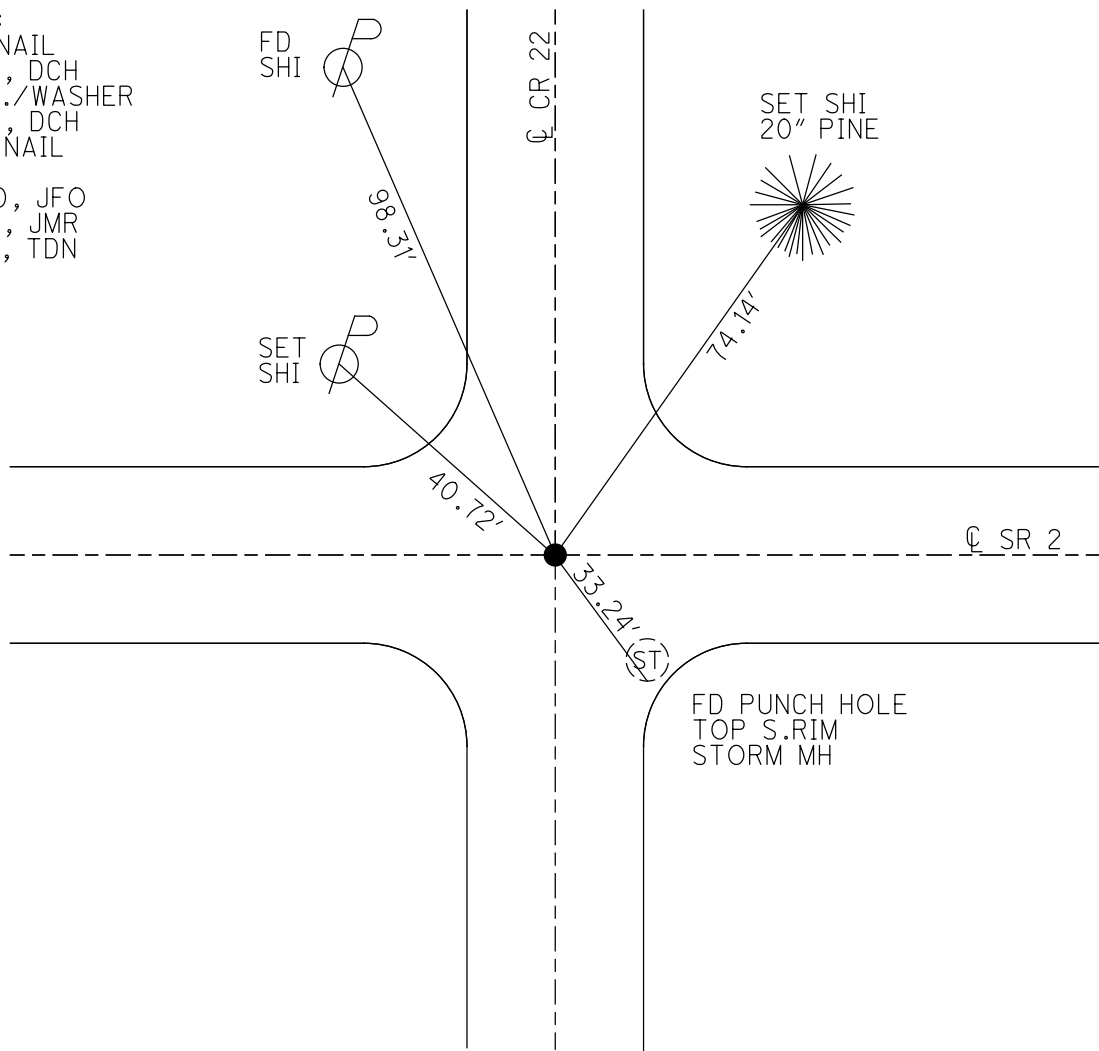
GEOID: NAVD88 2012A

GRID: NORTHING: 688736.778

EASTING: 1479248.449



RECORD:
 FD P.K.NAIL
 5/13/02, DCH
 SET P.K./WASHER
 7-26-02, DCH
 FD MAG NAIL
 REF15
 9/24/20, JFO
 3/05/21, JMR
 7/14/22, TDN



O.D.O.T. DISTRICT 2 SURVEY OFFICE (USE ONLY)

PERSONNEL

REFERENCE NO. 15

SHEET 1 OF 11

NOTES NIESE DATE 3/5/21
 H.C. RHOADES WEATHER SUNNY
 R.C. _____ TEMP. 35°

ROUTE SR 2
 COUNTY FULTON
 TOWNSHIP GERMAN
 SECTION 22
 T 7 N R 5 E

DWG BY NIESE PID PAVETRAIN

TYPE MONUMENT MAG NAIL

ON SURFACE - ~~BELOW~~ ON

OFFSET \varnothing PAVEMENT ON LT : RT

- TO - EDGE PAVEMENT

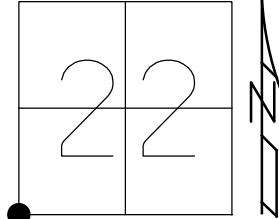
STATION: 336+51

HORZ.DATUM: NAD83 2011

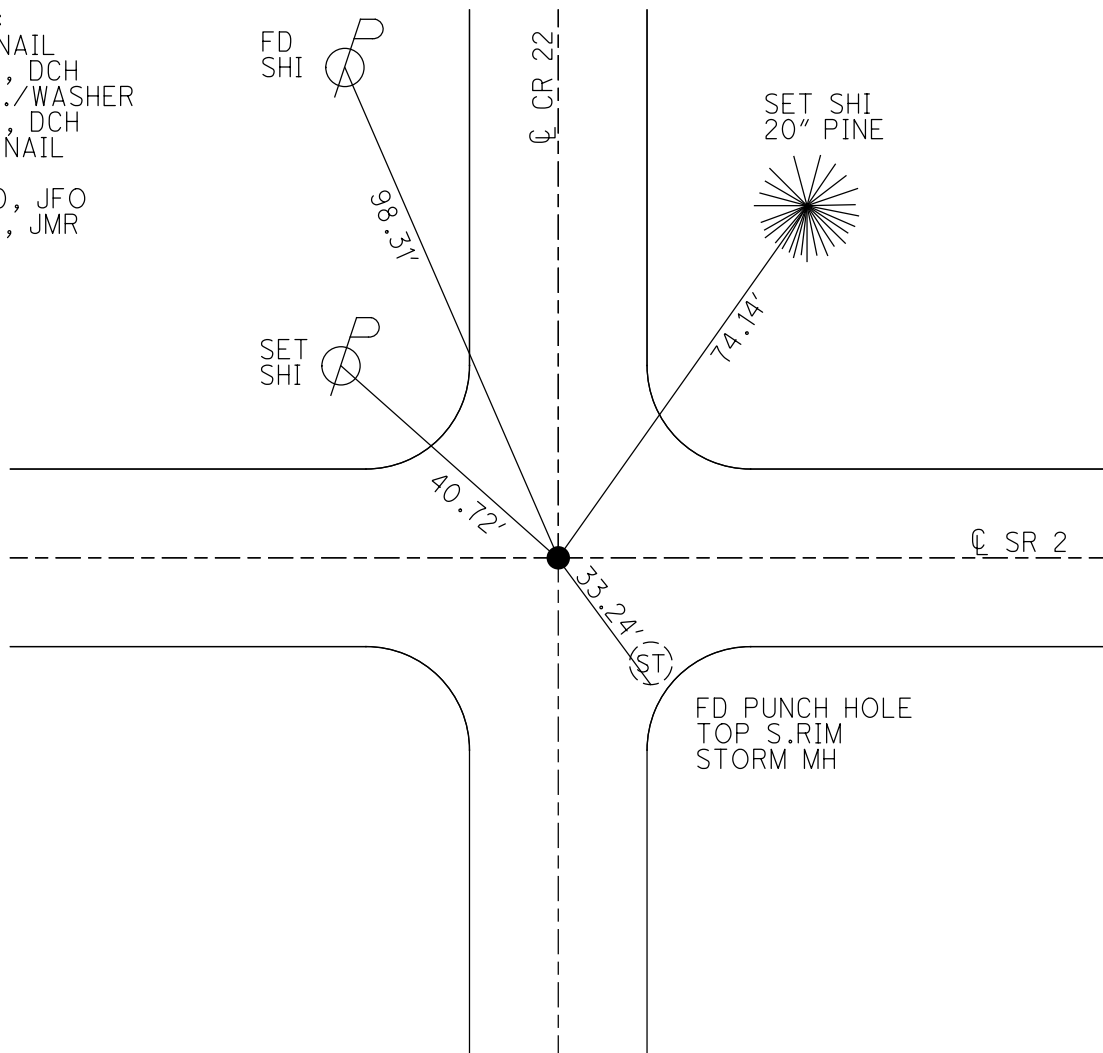
GEOID: NAVD88 2012A

GRID: NORTHING: 688736.778

EASTING: 1479248.449



RECORD:
 FD P.K.NAIL
 5/13/02, DCH
 SET P.K./WASHER
 7-26-02, DCH
 FD MAG NAIL
 REF15
 9/24/20, JFO
 3/05/21, JMR



O.D.O.T. DISTRICT 2 SURVEY OFFICE (USE ONLY)

PERSONNEL

REFERENCE NO. 15

SHEET 1 OF 11

NOTES RHOADES

DATE 9/24/20

ROUTE SR 2

H.C. O'DONNELL

WEATHER SUNNY

COUNTY FULTON

R.C. AUBLE

TEMP. 68°

TOWNSHIP GERMAN

SECTION 22

DWG BY RHOADES

PID PAVETRAIN

T 7 N R 5 E

TYPE MONUMENT MAG NAIL

ON SURFACE - ~~BELOW~~ ON

OFFSET ☉ PAVEMENT ON LT : RT

- TO - EDGE PAVEMENT

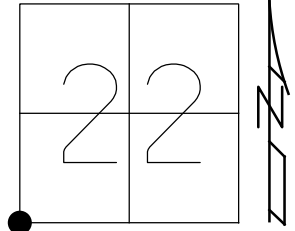
STATION: 336+51

HORIZ.DATUM: NAD83 2011

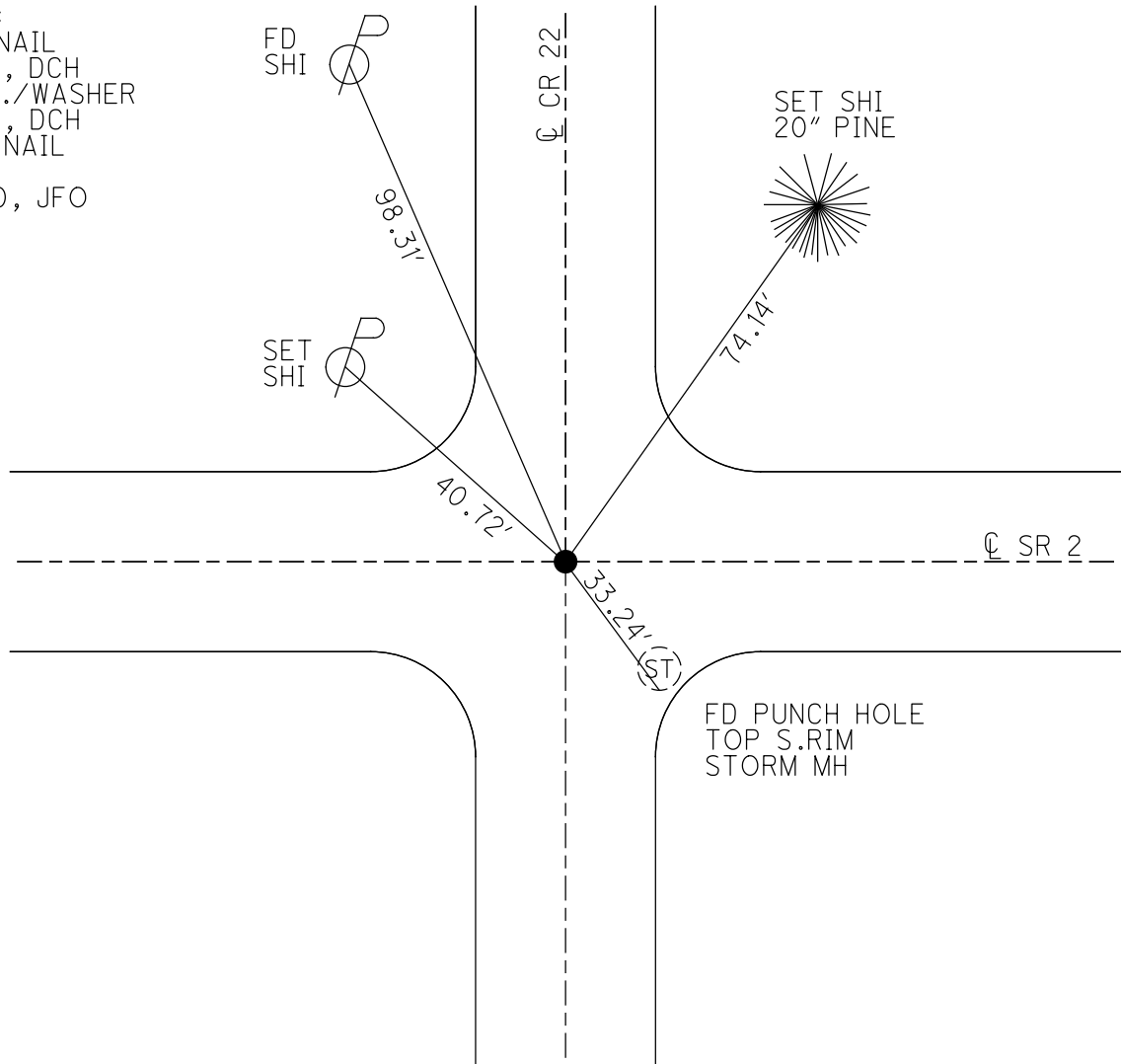
GEOID: NAVD88 2012A

GRID: NORTHING: 688736.778

EASTING: 1479248.449



RECORD:
 FD P.K.NAIL
 5/13/02, DCH
 SET P.K./WASHER
 7-26-02, DCH
 FD MAG NAIL
 REF15
 9/24/20, JFO



O.D.O.T. DISTRICT 2 SURVEY OFFICE (USE ONLY)

PERSONNEL _____ REFERENCE NO. 15 SHEET 1 OF 11

NOTES ROUSOS DATE 5/13/02 ROUTE SR 2

H.C. HOMAN WEATHER WINDY COUNTY FULTON

R.C. MICHALAK TEMP. 52° TOWNSHIP GERMAN

SECTION 22

T 7 N R 5 E

TYPE MONUMENT P.K.NAIL

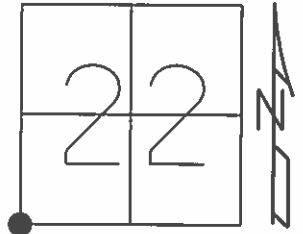
ON SURFACE - ~~BELOW~~ ON _____

~~LEFT~~ - ☉ PAV'T - ~~RIGHT~~ ON _____

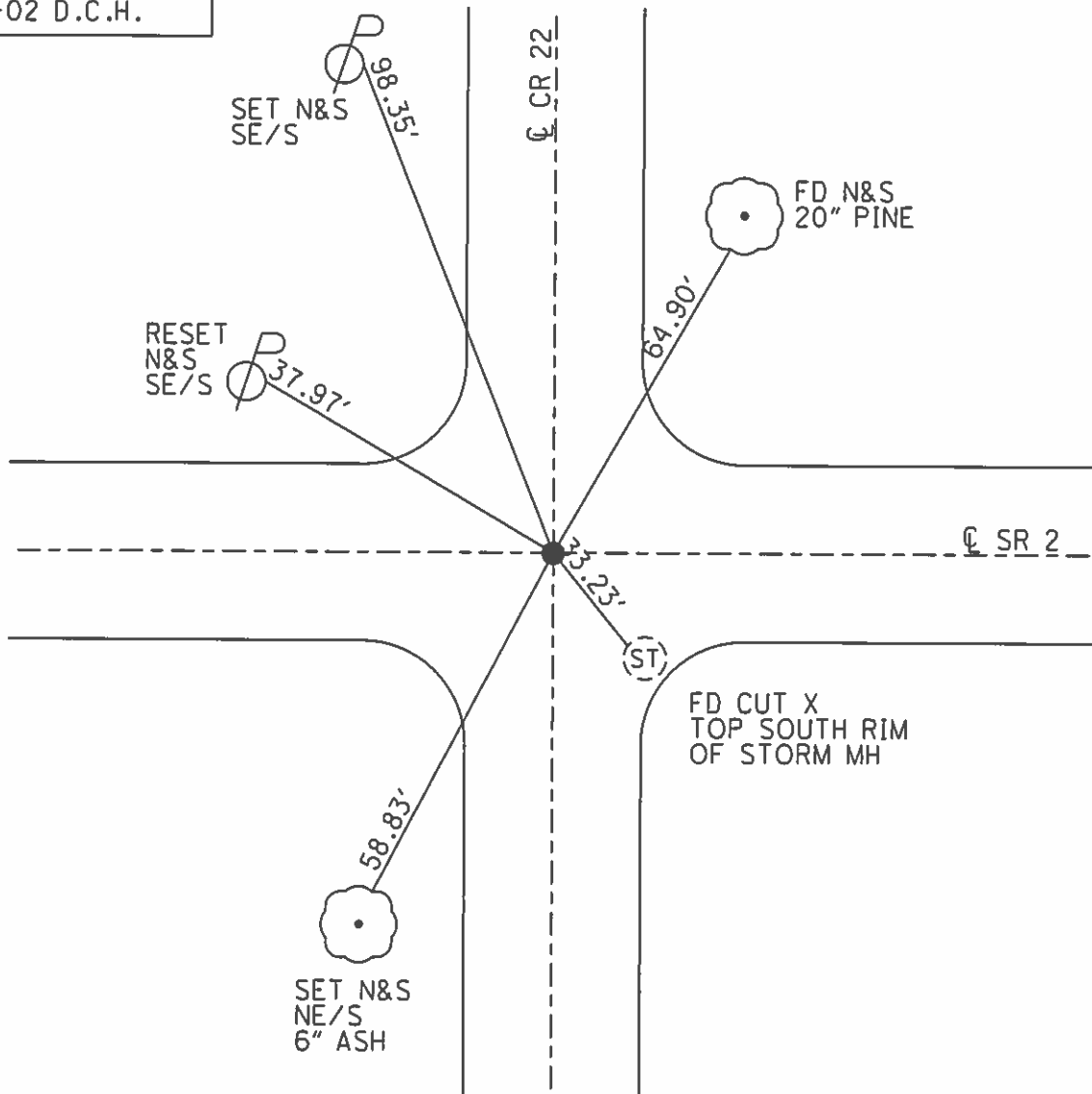
- TO - EDGE PAVEMENT

S.L.M. 336+51

GRID: NORTHING: _____ EASTING: _____



SET PK& WASHER
7-26-02 D.C.H.



O.D.O.T. DISTRICT 2 SURVEY OFFICE

PERSONNEL

REFERENCE NO. 15

SHEET 2 OF 13

NOTES 1. Stone

H.C. D. Condis'

DATE 17 Aug. 87

ROUTE SR 2

R.C. J. Householder

WEATHER Warm

COUNTY Fulton

TEMP. 80°

TOWNSHIP GERMAN

SECTION 22

T. 7 N. R. 5 E

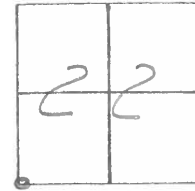
TYPE MONUMENT P.K.

ON SURFACE - ~~BELOW~~ YES

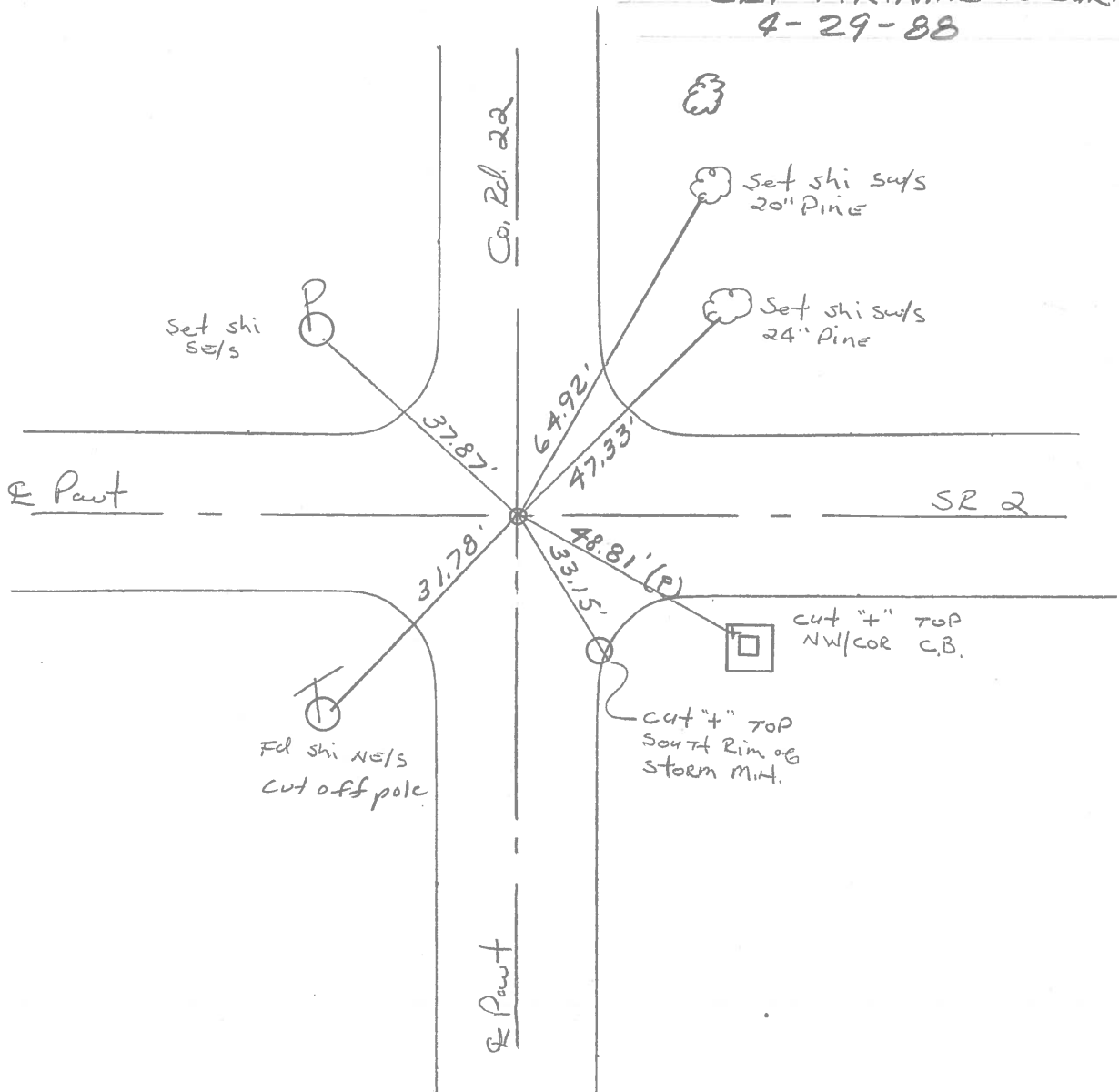
~~LEFT - C~~ PAVT. - ~~RIGHT~~ BOTH PAVT'S

TO EDGE PAVEMENT

S.L.M. 336 + 51

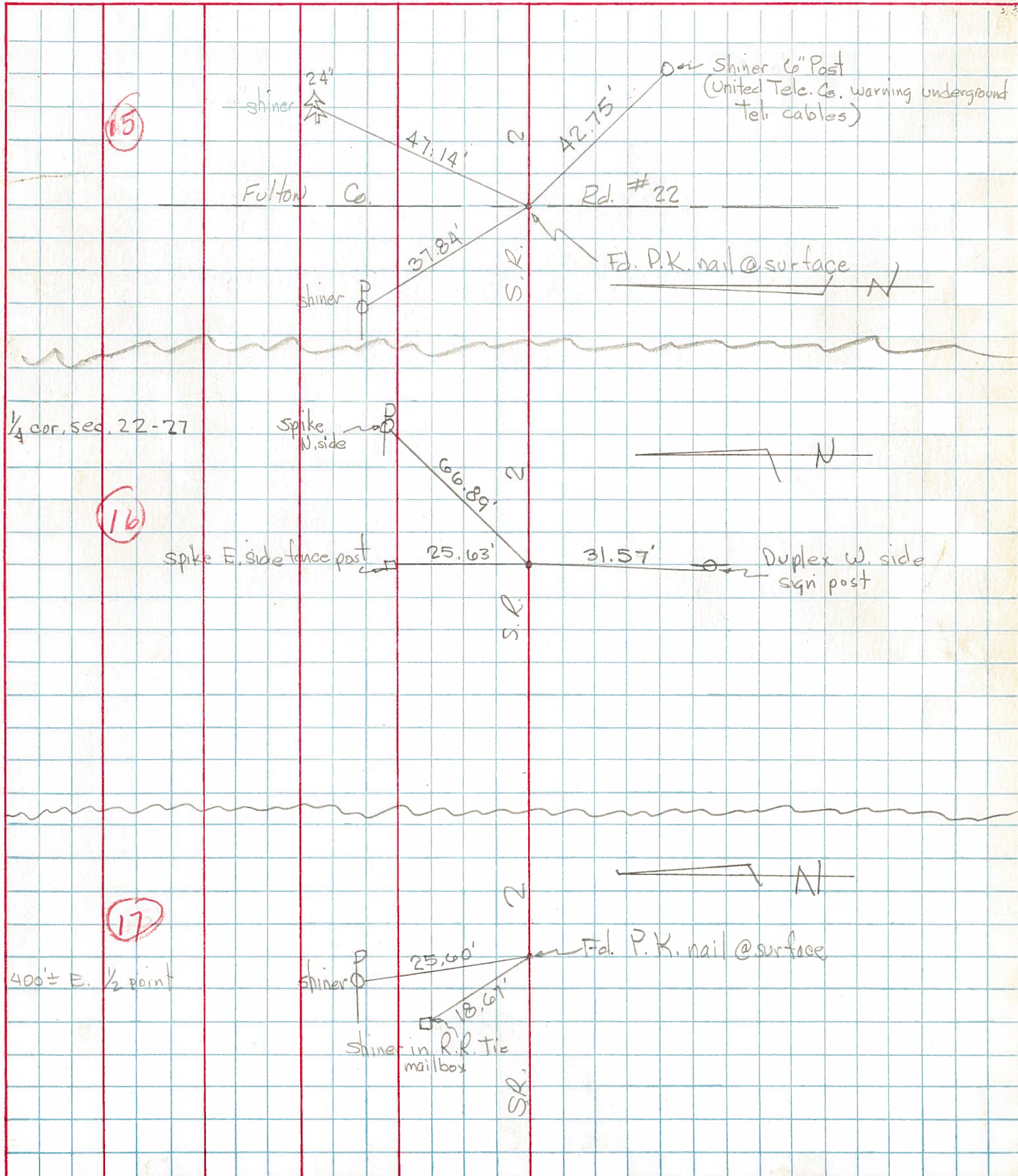


SET P.K. NAIL TO SURFACE
4-29-88



PERSONNEL	TITLE	PERSONNEL	TITLE	COUNTY	DATE	WEATHER	TEMP.
Tomsic				Fulton	MAY 16, 1973		
Neuser				S. R. 2			
Granata				SEC. EAST of RT. 66			

DESCRIPTION _____ LEFT _____ CENTER LINE _____ RIGHT _____ JOB NO. _____



PERSONNEL TITLE PERSONNEL TITLE

COUNTY Fu

DATE 5-1-67

Passafium

Wier

Frikson

Reader

S. R. # 2

WEATHER Cloudy

SEC. SE #66 to Hanucon

TEMP. 69°

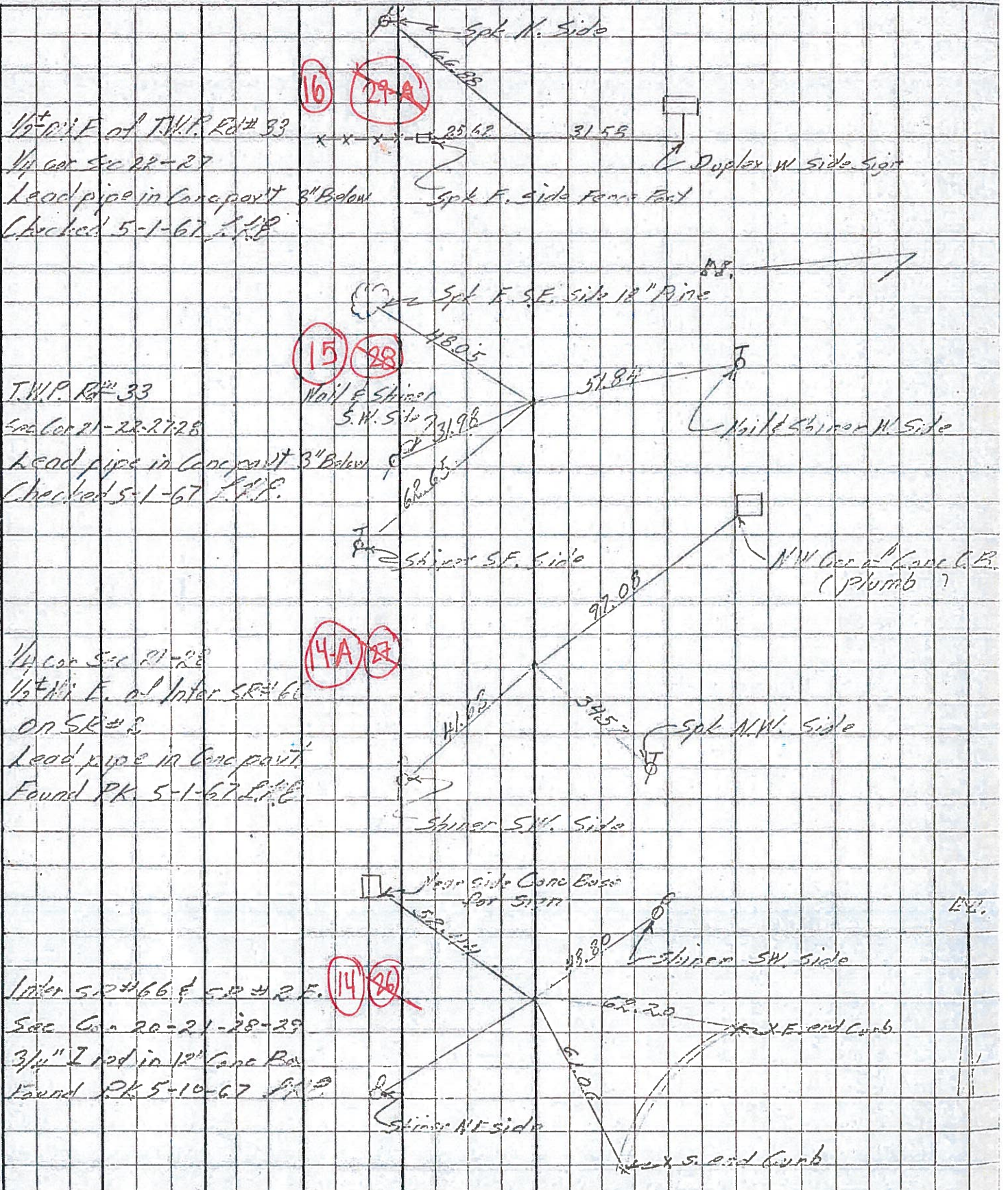
DESCRIPTION Witness to Control Points

JOB NO.

LEFT

CENTER LINE

RIGHT



PERSONNEL TITLE PERSONNEL TITLE

COUNTY Fulton

DATE OK 1-22-58

S. R. # 2

WEATHER O.K. 10-26-61 7.2
12-12-58

SEC.

TEMP.

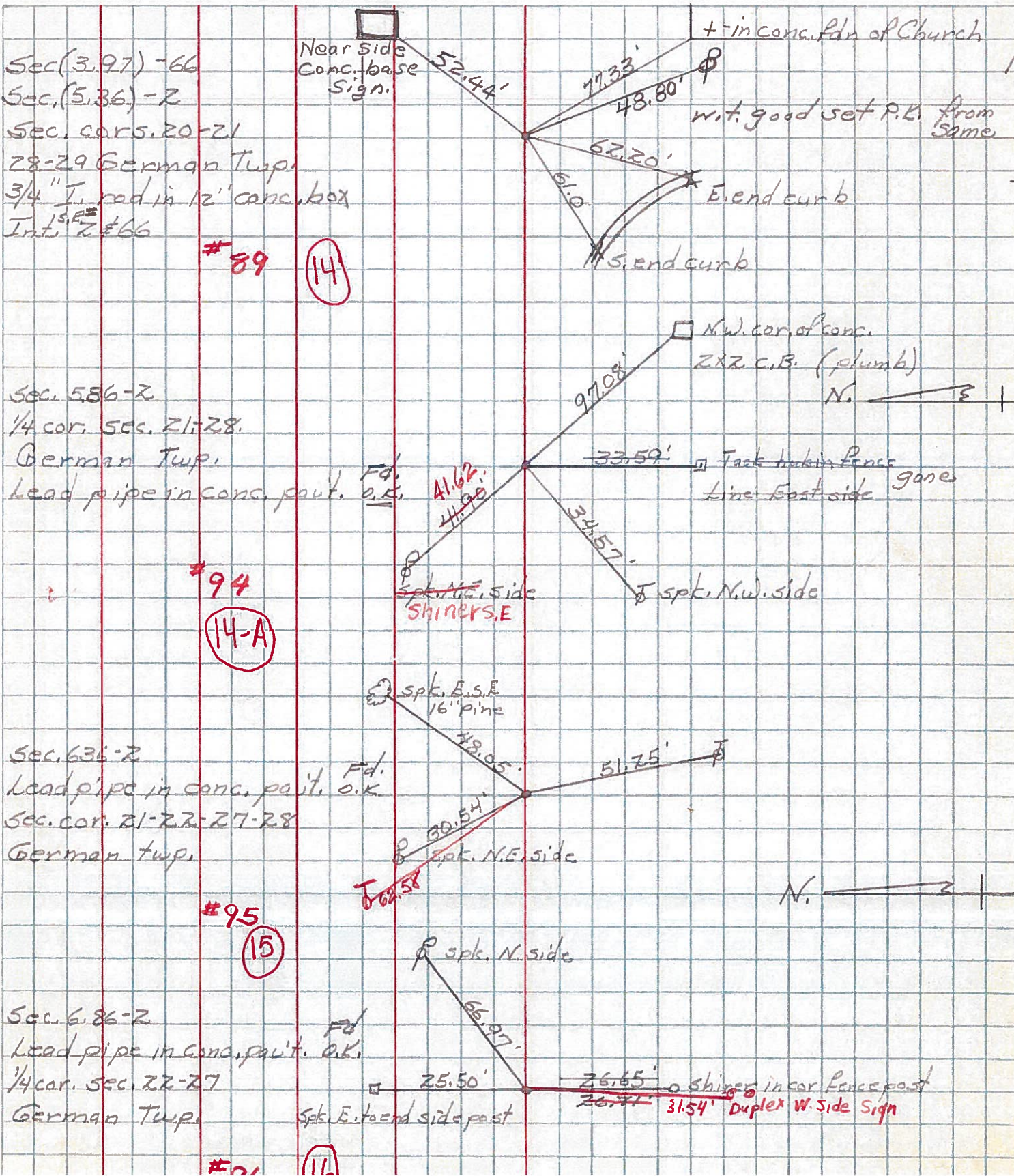
DESCRIPTION From S.P. #66 East to Wauscon

LEFT

CENTER LINE

RIGHT

JOB NO.



#89 (14)

#94 (14-A)

#95 (15)

#11 (11)