

O.D.O.T. DISTRICT 2 SURVEY OFFICE (USE ONLY)

PERSONNEL

REFERENCE NO. 16

SHEET 2 OF 11

NOTES AUBLE

DATE 12/21/23

ROUTE SR 2

H.C. NIESE

WEATHER CLOUDY

COUNTY FULTON

R.C. ASTON

TEMP. 40°

TOWNSHIP GERMAN

SECTION 22

DWG BY RHOADES

PID PAVING TRAIN

T 7 N R 5 E

TYPE MONUMENT MAG/WASHER

~~ON SURFACE~~ - BELOW 1"

OFFSET  $\oslash$  PAVEMENT ON LT : RT

9.9' TO LT EDGE PAVEMENT

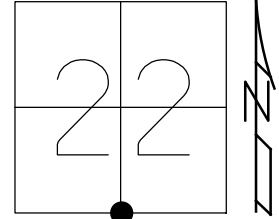
STATION: 362+91

HORIZ.DATUM: NAD83 2011

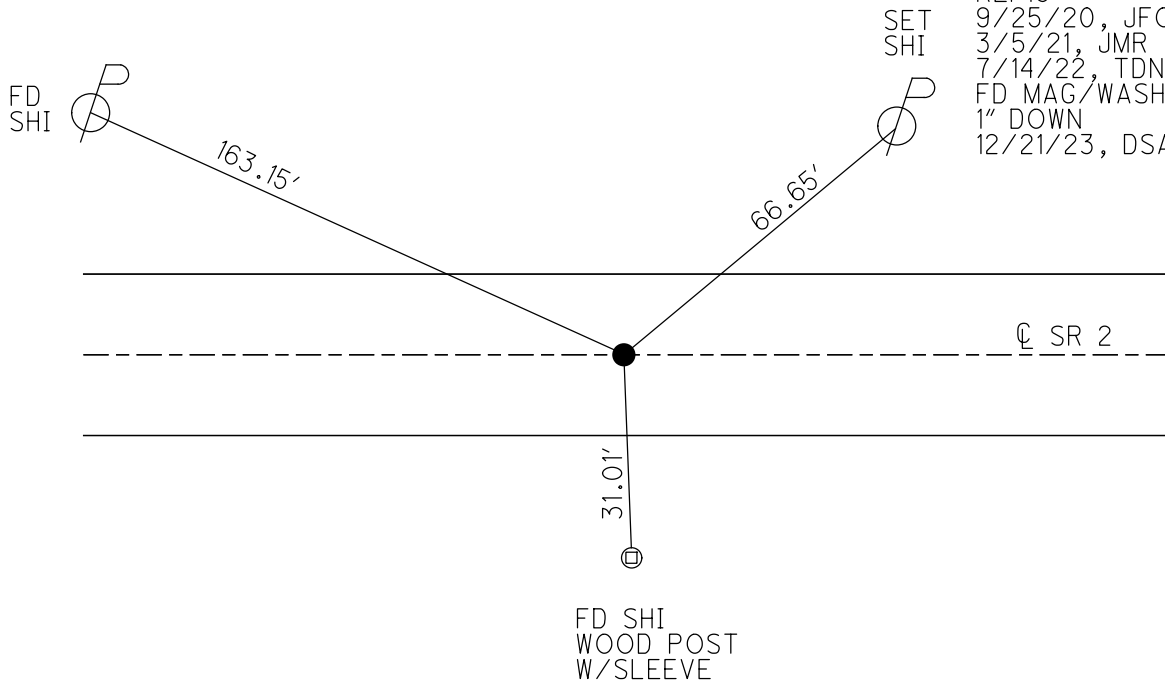
GEOID: NAVD88 2012A

GRID: NORTHING: 688680.725

EASTING: 1481887.975



RECORD:  
 FD P.K.NAIL  
 5/13/02, DCH  
 SET P.K./WASHER  
 7-26-02, DCH  
 FD P.K.SHANK  
 SET MAG/WASHER  
 REF16  
 9/25/20, JFO  
 3/5/21, JMR  
 7/14/22, TDN  
 FD MAG/WASHER  
 1" DOWN  
 12/21/23, DSA



O.D.O.T. DISTRICT 2 SURVEY OFFICE (USE ONLY)

PERSONNEL \_\_\_\_\_ REFERENCE NO. 16 SHEET 2 OF 11  
 NOTES NIESE DATE 3/5/21 ROUTE SR 2  
 H.C. RHOADES WEATHER SUNNY COUNTY FULTON  
 R.C. \_\_\_\_\_ TEMP. 35° TOWNSHIP GERMAN  
 DWG BY NIESE PID PAVETRAIN SECTION 22  
 T 7 N R 5 E

TYPE MONUMENT MAG/WASHER

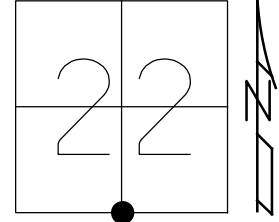
~~ON SURFACE~~ - BELOW 1"

OFFSET  $\text{C}$  PAVEMENT ON LT : RT  
9.9' TO LT EDGE PAVEMENT

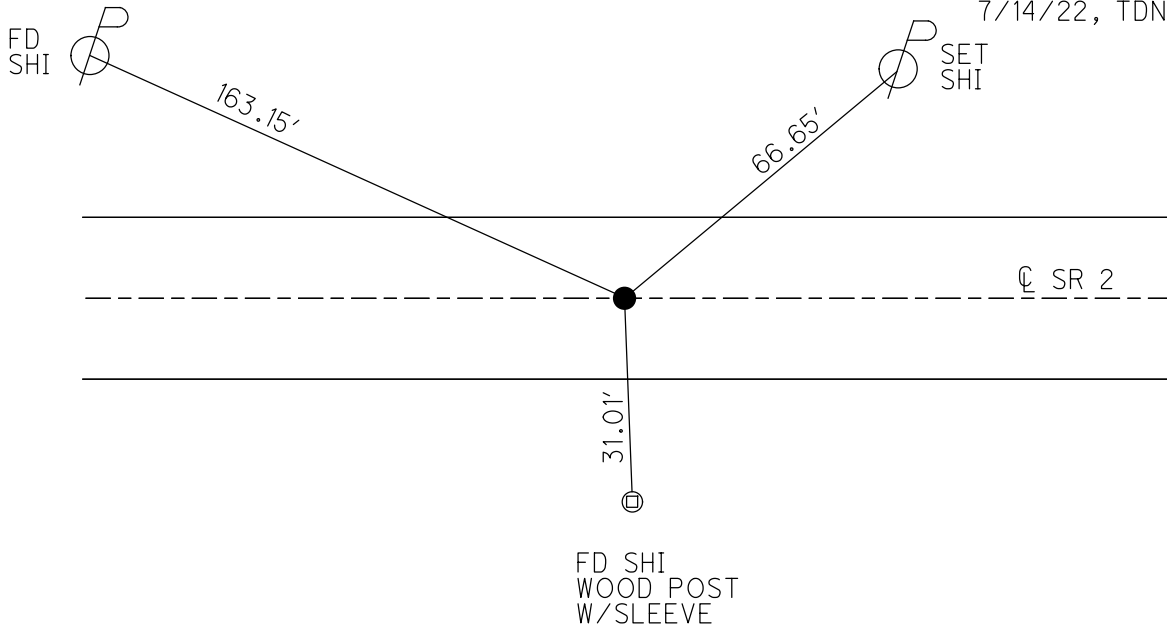
STATION: 362+91

HORZ.DATUM: NAD83 2011 GEOID: NAVD88 2012A

GRID: NORTHING: 688680.725 EASTING: 1481887.975



RECORD:  
 FD P.K.NAIL  
 5/13/02, DCH  
 SET P.K./WASHER  
 7-26-02, DCH  
 FD P.K.SHANK  
 SET MAG/WASHER  
 REF16  
 9/25/20, JFO  
 3/5/21, JMR  
 7/14/22, TDN



O.D.O.T. DISTRICT 2 SURVEY OFFICE (USE ONLY)

PERSONNEL

REFERENCE NO. 16

SHEET 2 OF 11

NOTES NIESE

DATE 3/5/21

ROUTE SR 2

H.C. RHOADES

WEATHER SUNNY

COUNTY FULTON

R.C. \_\_\_\_\_

TEMP. 35°

TOWNSHIP GERMAN

SECTION 22

DWG BY NIESE PID PAVETRAIN

T 7 N R 5 E

TYPE MONUMENT MAG/WASHER

~~ON SURFACE~~ - BELOW 1"

OFFSET CL PAVEMENT ON LT : RT

9.9' TO LT EDGE PAVEMENT

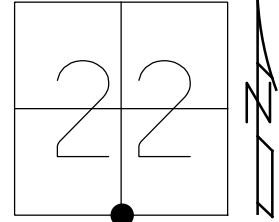
STATION: 362+91

HORZ.DATUM: NAD83 2011

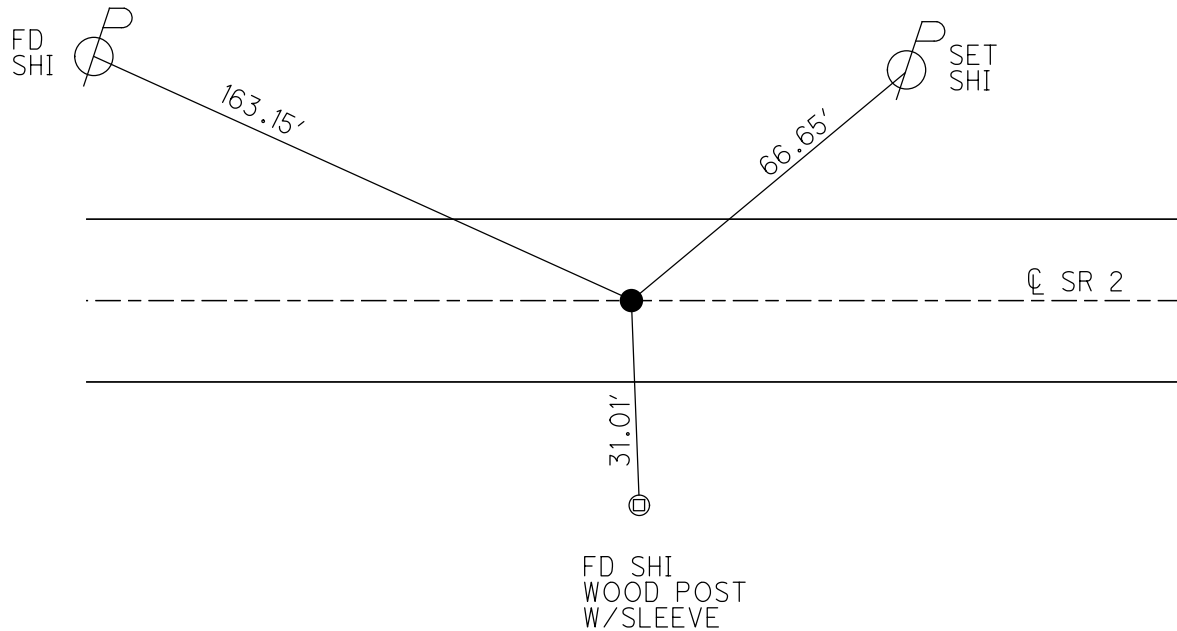
GEOID: NAVD88 2012A

GRID: NORTHING: 688680.725

EASTING: 1481887.975



RECORD:  
 FD P.K.NAIL  
 5/13/02, DCH  
 SET P.K./WASHER  
 7-26-02, DCH  
 FD P.K.SHANK  
 SET MAG/WASHER  
 REF16  
 9/25/20, JFO  
 3/5/21, JMR



O.D.O.T. DISTRICT 2 SURVEY OFFICE (USE ONLY)

PERSONNEL

REFERENCE NO. 16

SHEET 2 OF 11

NOTES RHOADES

DATE 9/25/20

ROUTE SR 2

H.C. O'DONNELL

WEATHER SUNNY

COUNTY FULTON

R.C. AUBLE

TEMP. 54°

TOWNSHIP GERMAN

SECTION 22

DWG BY RHOADES

PID PAVETRAIN

T 7 N R 5 E

TYPE MONUMENT MAG/WASHER

~~ON SURFACE~~ - BELOW 1"

OFFSET Q PAVEMENT ON LT : RT

9.9' TO LT EDGE PAVEMENT

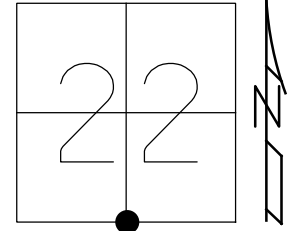
STATION: 362+91

HORZ.DATUM: NAD83 2011

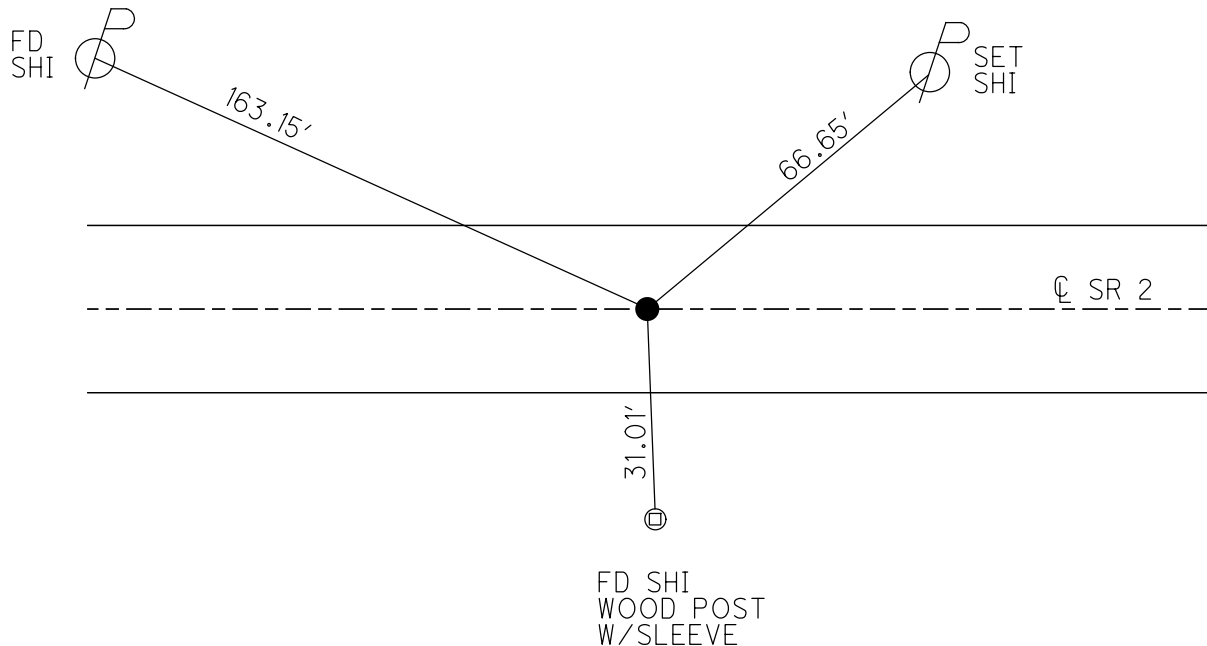
GEOID: NAVD88 2012A

GRID: NORTHING: 688680.725

EASTING: 1481887.975



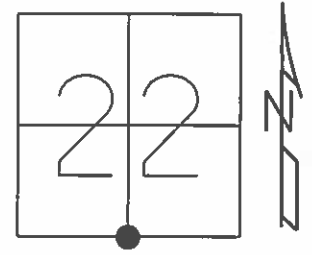
RECORD:  
 FD P.K.NAIL  
 5/13/02, DCH  
 SET P.K./WASHER  
 7-26-02, DCH  
 FD P.K.SHANK  
 SET MAG/WASHER  
 REF16  
 9/25/20, JFO



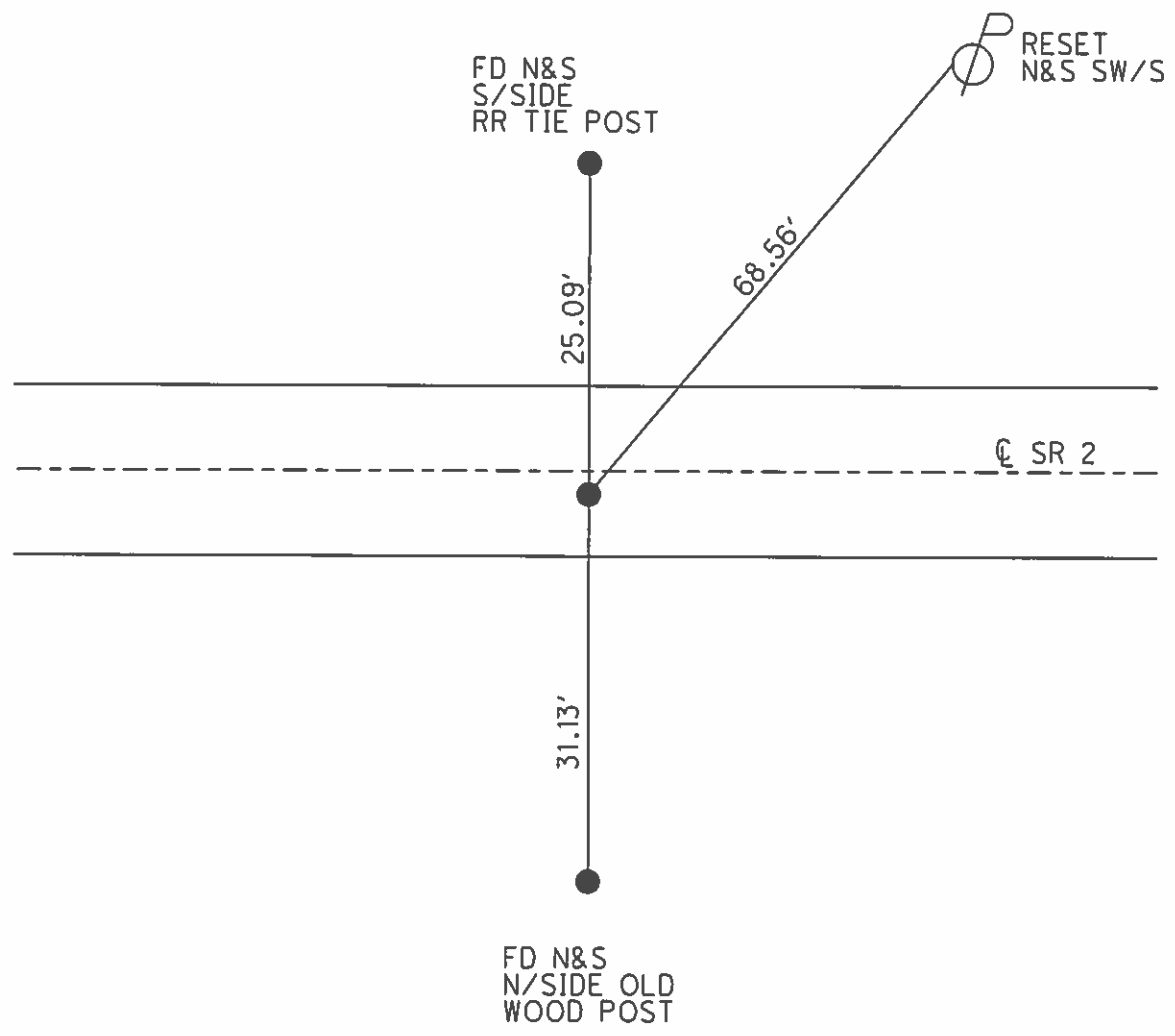
O.D.O.T. DISTRICT 2 SURVEY OFFICE (USE ONLY)

PERSONNEL \_\_\_\_\_ REFERENCE NO. 16 SHEET 2 OF 11  
 NOTES ROUSOS DATE 5/13/02 ROUTE SR 2  
 H.C. HOMAN WEATHER WINDY COUNTY FULTON  
 R.C. MICHALAK TEMP. 52° TOWNSHIP GERMAN  
 \_\_\_\_\_ SECTION 22  
 \_\_\_\_\_ T 7 N R 5 E

TYPE MONUMENT P.K.NAIL  
 ON SURFACE - ~~BELOW~~ ON  
~~LEFT~~ - ☉ PAV'T - RIGHT 0.4'  
9.9' TOLT EDGE PAVEMENT  
 S.L.M. 362+91  
 GRID: NORTHING: \_\_\_\_\_ EASTING: \_\_\_\_\_



SET PK & WASHER  
 7-26-02 D.C.H.



# O.D.O.T. DISTRICT 2 SURVEY OFFICE

PERSONNEL

REFERENCE NO. 16

SHEET 3 OF 13

NOTES 1. Stone

H.C. D. Curtis

R.C. J. Householder

DATE 17 Aug. 87

WEATHER Warm

TEMP. 80°

ROUTE SR 2

COUNTY FULTON

TOWNSHIP GERMAN

SECTION 22

T 7 N R 5 E

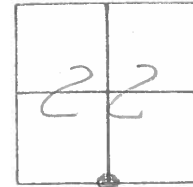
TYPE MONUMENT P.K.

ON SURFACE - ~~BELOW~~ YES

~~LEFT - E. PAV'T.~~ - RIGHT 0.4'

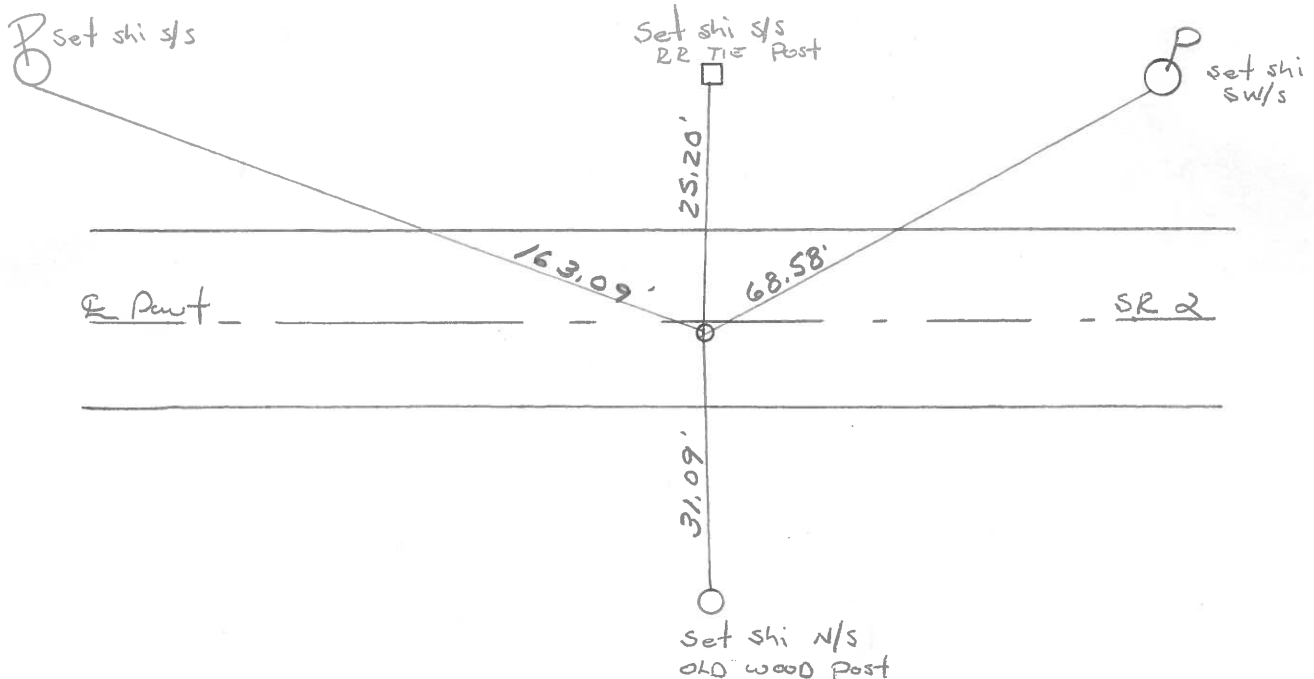
9.9 TO R+ EDGE PAVEMENT

S.L.M. 362 + 91



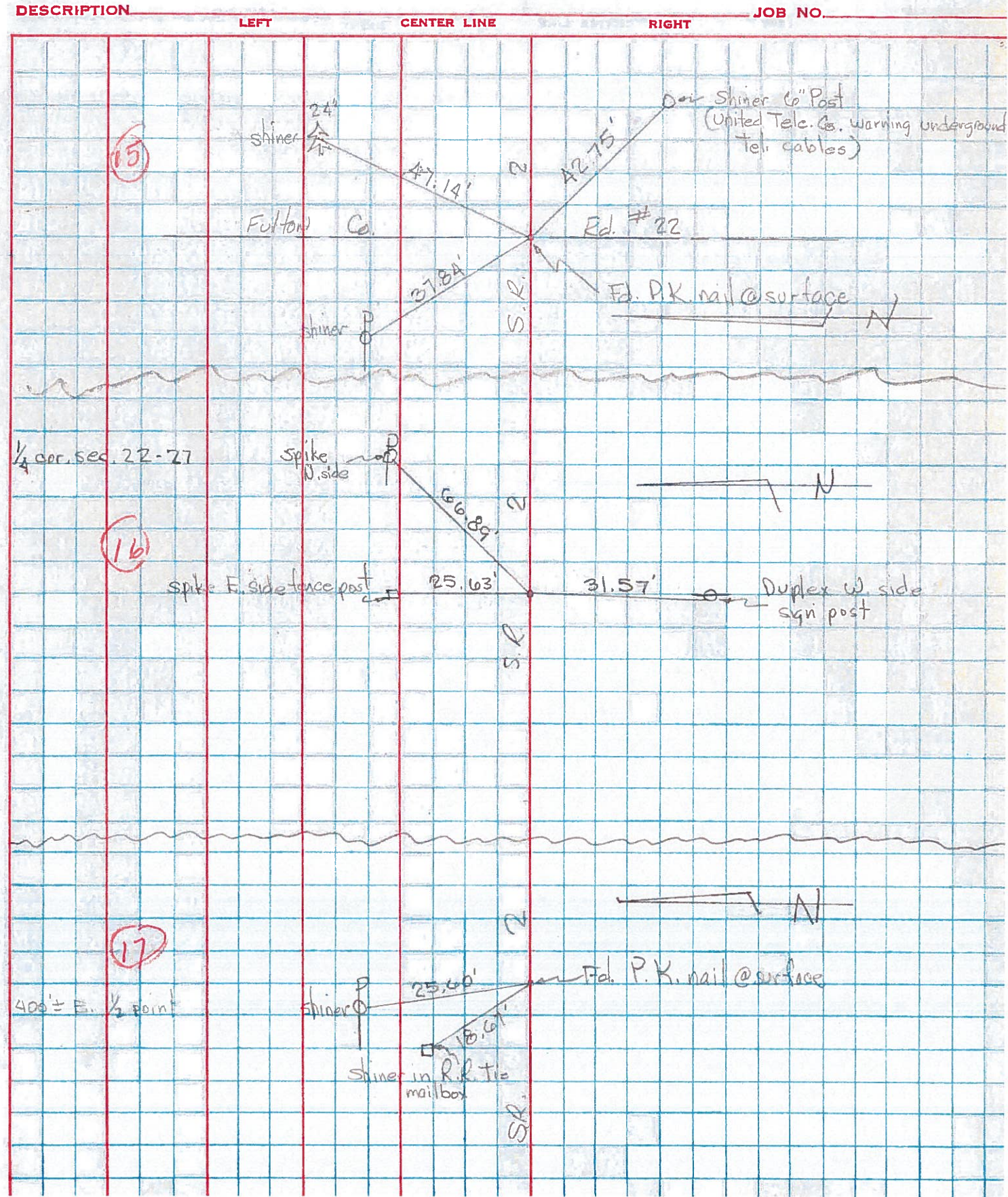
SET P.K. NAIL TO SURFACE

4-29-88





PERSONNEL	TITLE	PERSONNEL	TITLE	COUNTY	DATE	WEATHER	TEMP.
Tomsic				Fulton	MAY 16, 1973		
Neuser				S. R. 2			
Granata				SEC. EAST of R.T. 66			





PERSONNEL TITLE PERSONNEL TITLE

COUNTY Fu

DATE 5-1-67

Pacefall

Wier

Frikson Recorder

S. R. # 2

WEATHER Cloudy

SEC. SR # 66 to Hanson

TEMP. 69°

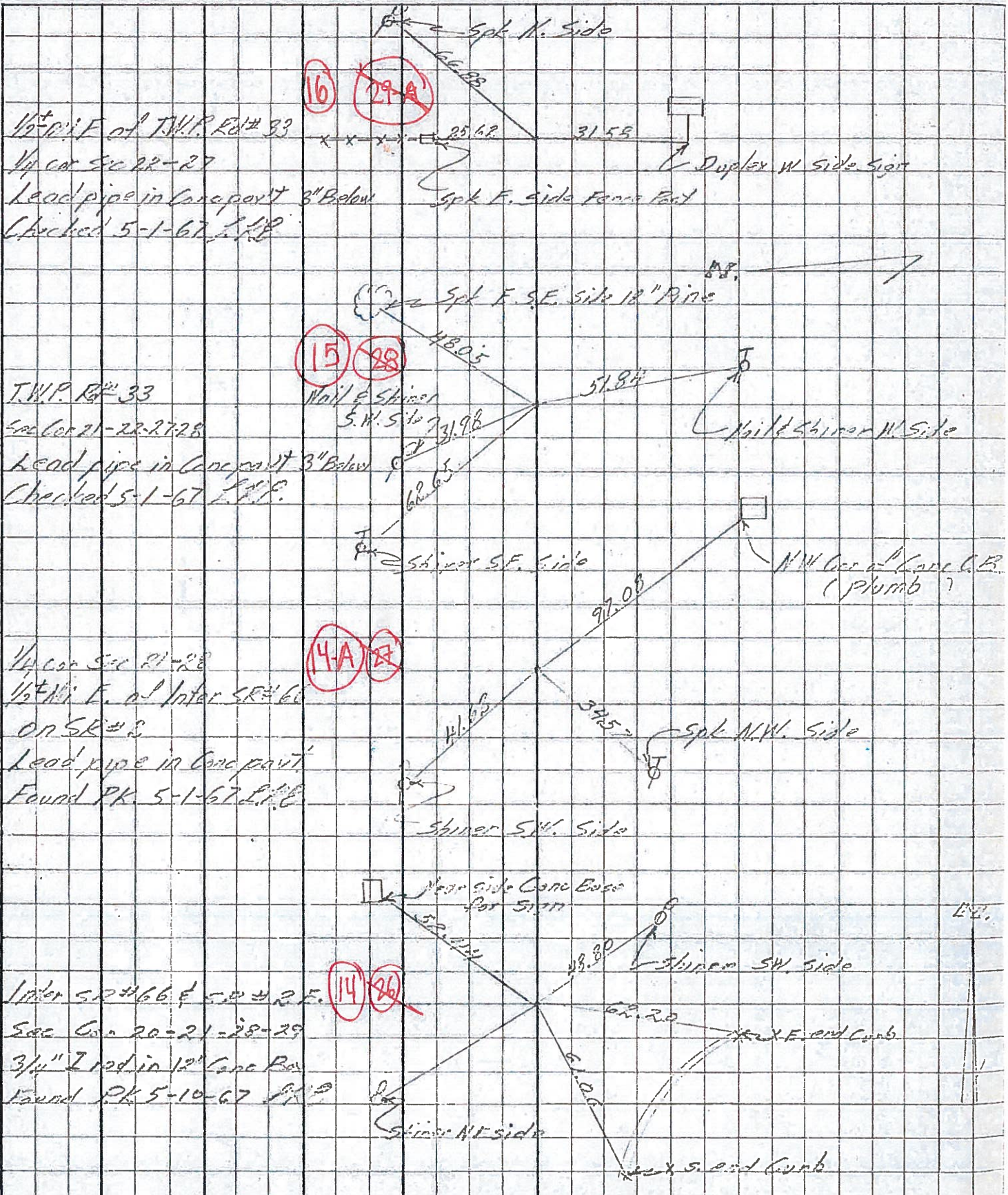
DESCRIPTION Witness to Control Points

JOB NO.

LEFT

CENTER LINE

RIGHT



1/2 mi E of T.W.P. Rd # 33  
 1/4 cor Sec 22-27  
 Lead pipe in Conc part  
 Checked 5-1-67 L.W.F.

T.W.P. Rd # 33  
 Sec Cor 21-22-27-28  
 Lead pipe in Conc part  
 Checked 5-1-67 L.W.F.

1/4 cor Sec 21-28  
 1/2 mi E. of Inter. SR # 66  
 on SR # 3  
 Lead pipe in Conc part  
 Found PK 5-1-67 L.W.F.

Inter. SR # 66 & SR # 2 E.  
 Sec. Cor. 20-21-28-29  
 3/4" I rod in 12" Conc Pav  
 Found PK 5-10-67 L.W.F.



PERSONNEL TITLE PERSONNEL TITLE

COUNTY Fulton

DATE OK 1-22-58

S. R. # 2

WEATHER O.K. 10-26-61 11.2

SEC.

TEMP.

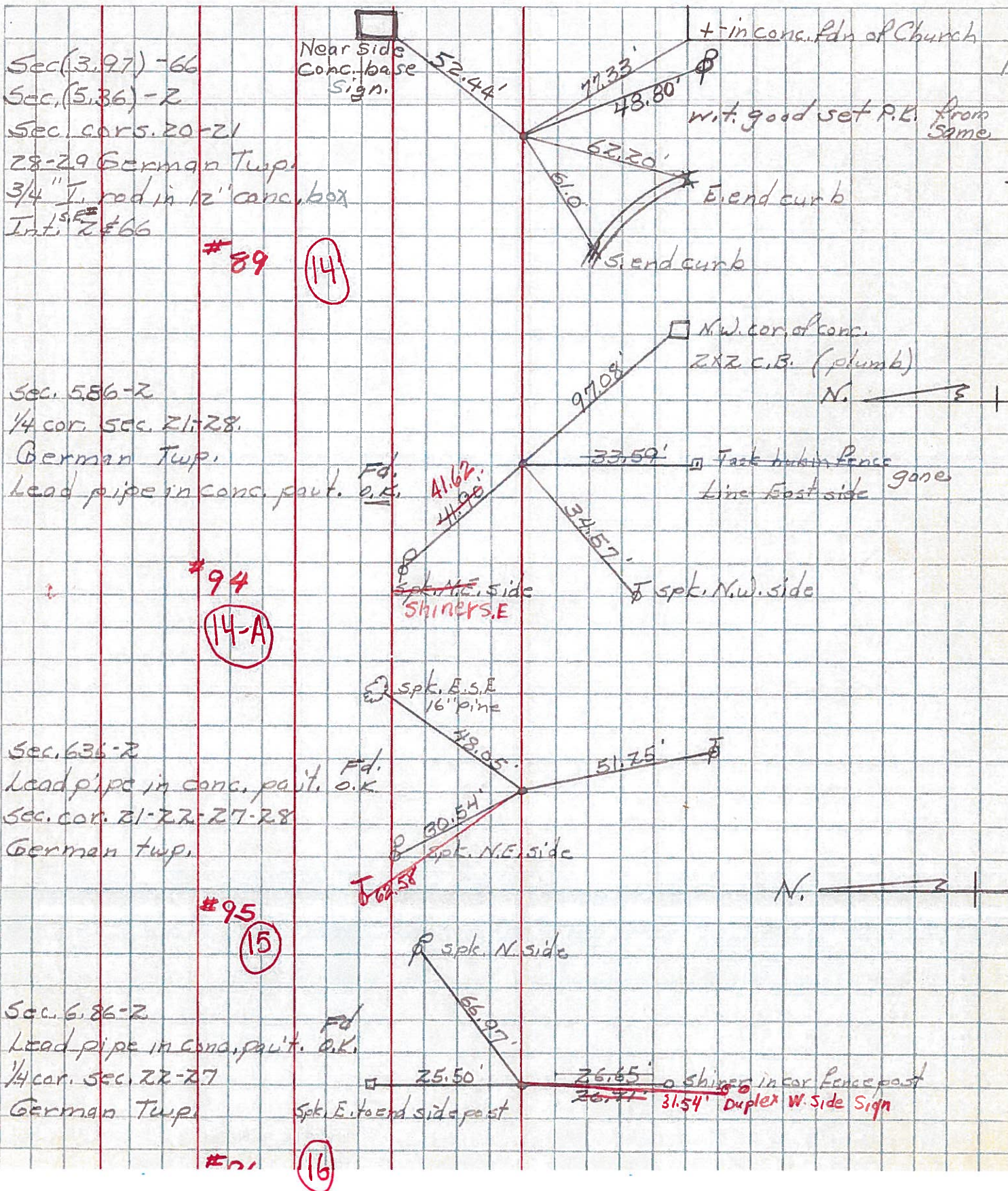
DESCRIPTION From S.P. #66 East to Wauscon

JOB NO.

LEFT

CENTER LINE

RIGHT



Sec. (3.97) -66  
 Sec. (5.36) -2  
 Sec. cor. 20-21  
 28-29 German Twp.  
 3/4" I. rod in 12" conc. box  
 Int. S.E. #66

#89 (14)

Sec. 586-2  
 1/4 cor. sec. 21-28.  
 German Twp.  
 Lead pipe in conc. part. o.k.

#94 (14-A)

Sec. 636-2  
 Lead pipe in conc. part. o.k.  
 Sec. cor. 21-22-27-28  
 German Twp.

#95 (15)

Sec. 6.86-2  
 Lead pipe in conc. part. o.k.  
 1/4 cor. sec. 22-27  
 German Twp.

#96 (16)