

O.D.O.T. DISTRICT 2 SURVEY OFFICE (USE ONLY)

PERSONNEL _____ REFERENCE NO. 17 SHEET 3 OF 11

NOTES NIESE DATE 3/5/21 ROUTE SR 2
 H.C. RHOADES WEATHER SUNNY COUNTY FULTON
 R.C. _____ TEMP. 54° TOWNSHIP GERMAN
 SECTION 22

DWG BY NIESE PID PAVETRAIN T 7 N R 5 E

TYPE MONUMENT P.K.NAIL

ON SURFACE - ~~BELOW~~ ON _____

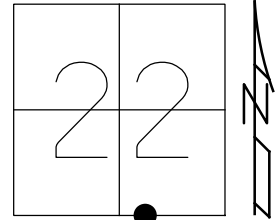
OFFSET C PAVEMENT ON _____ LT : RT

9.7' TO RT EDGE PAVEMENT

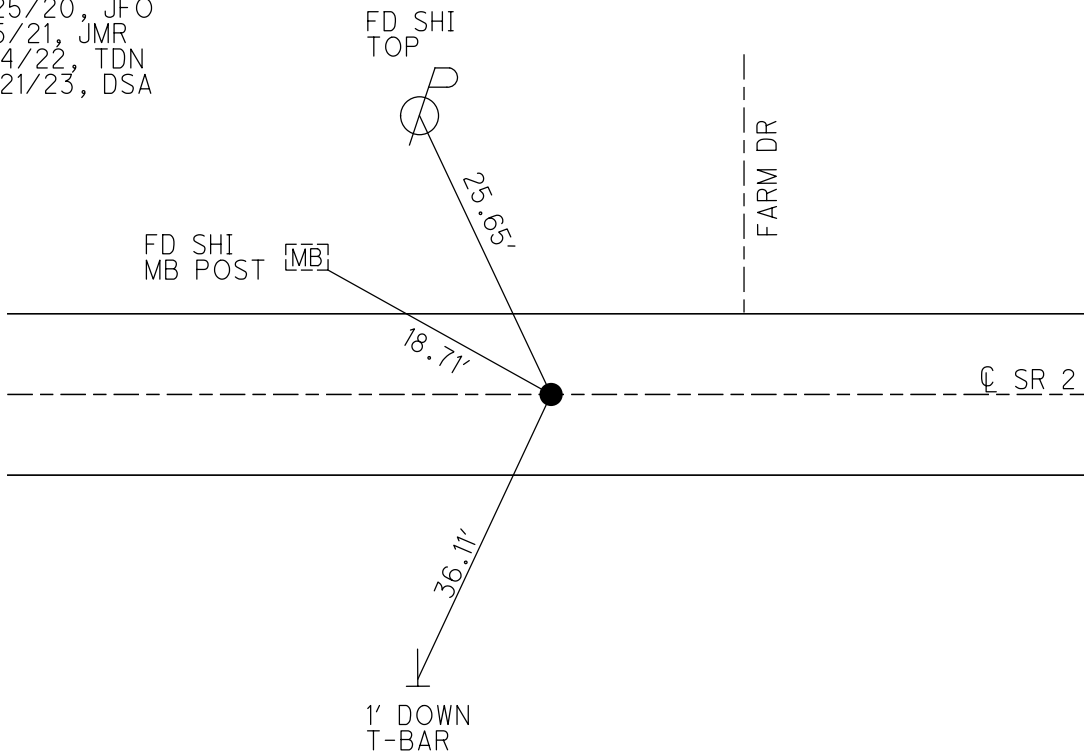
STATION: 368+16

HORZ.DATUM: NAD83 2011 GEOID: NAVD88 2012A

GRID: NORTHING: 688670.203 EASTING: 1482413.062



RECORD:
 P.K.NAIL
 5/13/02, DCH
 SET P.K./WASHER
 7-26-02, DCH
 FD P.K.NAIL
 REF17
 9/25/20, JFO
 3/5/21, JMR
 7/14/22, TDN
 12/21/23, DSA



O.D.O.T. DISTRICT 2 SURVEY OFFICE (USE ONLY)

PERSONNEL

REFERENCE NO. 17

SHEET 3 OF 11

NOTES NIESE

DATE 3/5/21

ROUTE SR 2

H.C. RHOADES

WEATHER SUNNY

COUNTY FULTON

R.C. _____

TEMP. 54°

TOWNSHIP GERMAN

SECTION 22

DWG BY NIESE

PID PAVETRAIN

T 7 N R 5 E

TYPE MONUMENT P.K.NAIL

ON SURFACE - ~~BELOW~~ ON

OFFSET ☑ PAVEMENT ON LT : RT

9.7' TO RT EDGE PAVEMENT

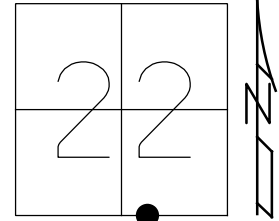
STATION: 368+16

HORIZ.DATUM: NAD83 2011

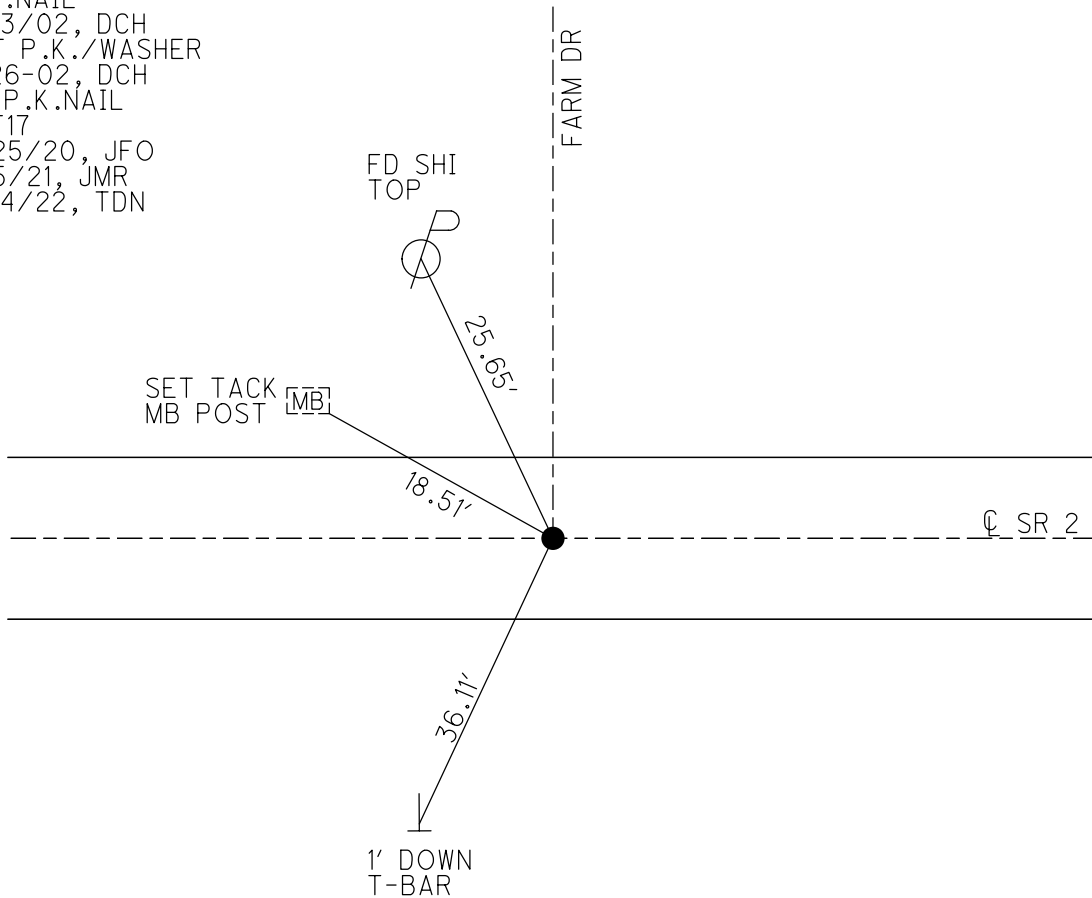
GEOID: NAVD88 2012A

GRID: NORTHING: 688670.203

EASTING: 1482413.062



RECORD:
 P.K.NAIL
 5/13/02, DCH
 SET P.K./WASHER
 7-26-02, DCH
 FD P.K.NAIL
 REF17
 9/25/20, JFO
 3/5/21, JMR
 7/14/22, TDN



O.D.O.T. DISTRICT 2 SURVEY OFFICE (USE ONLY)

PERSONNEL _____

REFERENCE NO. 17

SHEET 3 OF 11

NOTES NIESE

DATE 3/5/21

ROUTE SR 2

H.C. RHOADES

WEATHER SUNNY

COUNTY FULTON

R.C. _____

TEMP. 54°

TOWNSHIP GERMAN

DWG BY NIESE

PID PAVETRAIN

SECTION 22

T 7 N R 5 E

TYPE MONUMENT P.K.NAIL

ON SURFACE - ~~BELOW~~ ON

OFFSET CL PAVEMENT ON LT : RT

9.7' TO RT EDGE PAVEMENT

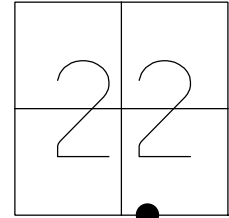
STATION: 368+16

HORZ.DATUM: NAD83 2011

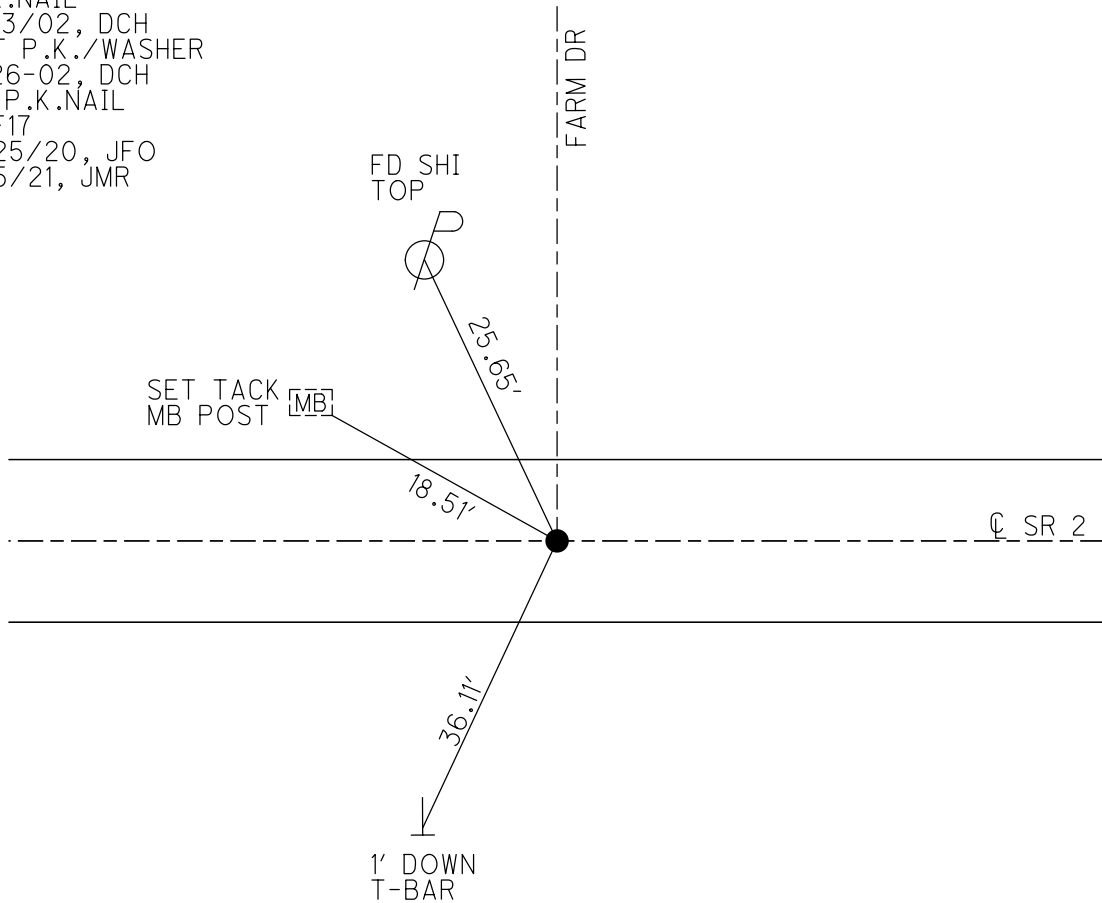
GEOID: NAVD88 2012A

GRID: NORTHING: 688670.203

EASTING: 1482413.062



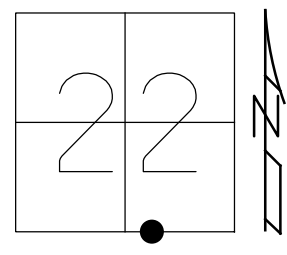
RECORD:
 P.K.NAIL
 5/13/02, DCH
 SET P.K./WASHER
 7-26-02, DCH
 FD P.K.NAIL
 REF17
 9/25/20, JFO
 3/5/21, JMR



O.D.O.T. DISTRICT 2 SURVEY OFFICE (USE ONLY)

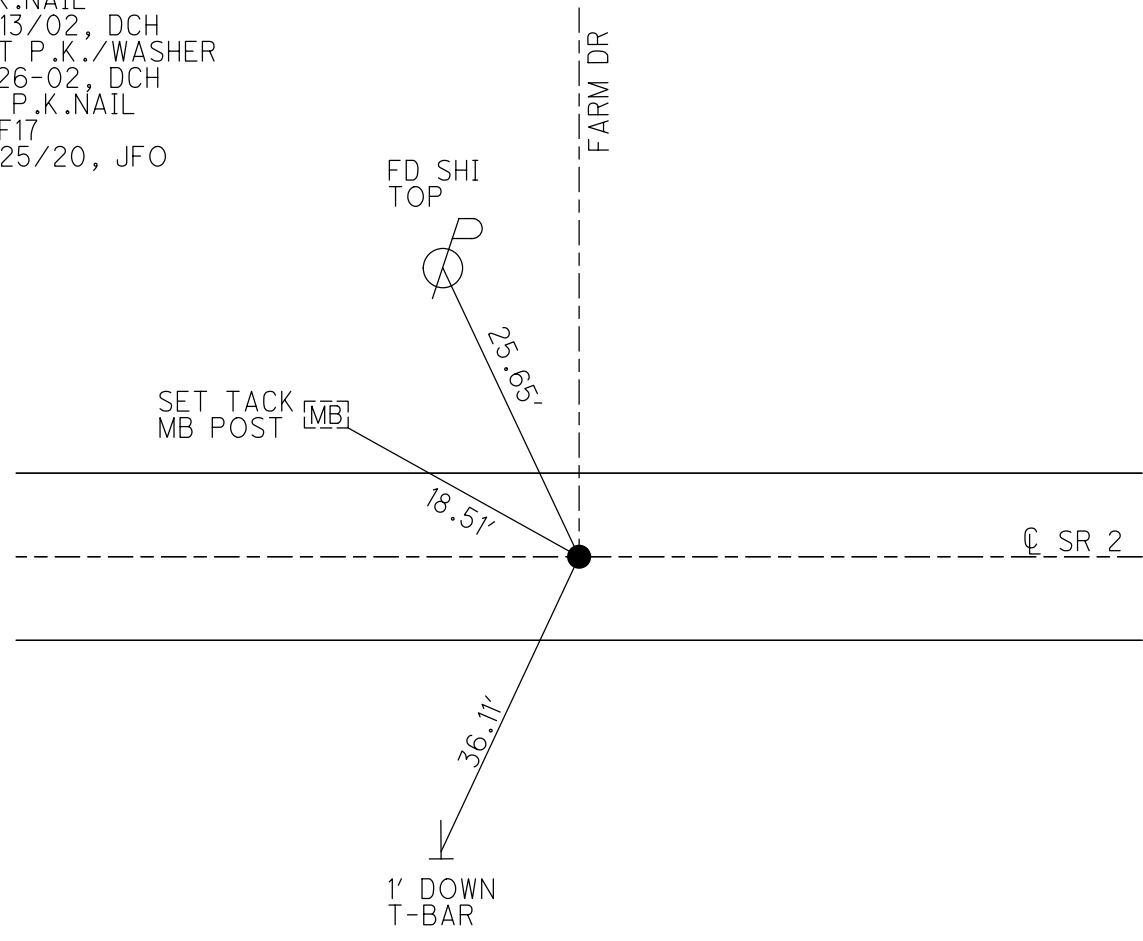
PERSONNEL _____ REFERENCE NO. 17 SHEET 3 OF 11
 NOTES RHOADES DATE 9/25/20 ROUTE SR 2
 H.C. O'DONNELL WEATHER SUNNY COUNTY FULTON
 R.C. AUBLE TEMP. 54° TOWNSHIP GERMAN
 DWG BY RHOADES PID PAVETRAIN SECTION 22
 T 7 N R 5 E

TYPE MONUMENT P.K.NAIL
 ON SURFACE - ~~BELOW~~ ON _____
 OFFSET ☐ PAVEMENT ON _____ LT : RT
9.7' TO RT EDGE PAVEMENT
 STATION: 368+16



HORZ.DATUM: NAD83 2011 GEOID: NAVD88 2012A
 GRID: NORTHING: 688670.203 EASTING: 1482413.062

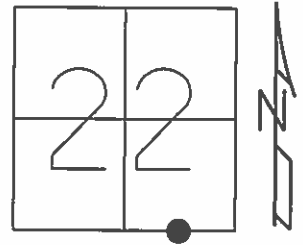
RECORD:
 P.K.NAIL
 5/13/02, DCH
 SET P.K./WASHER
 7-26-02, DCH
 FD P.K.NAIL
 REF17
 9/25/20, JFO



O.D.O.T. DISTRICT 2 SURVEY OFFICE (USE ONLY)

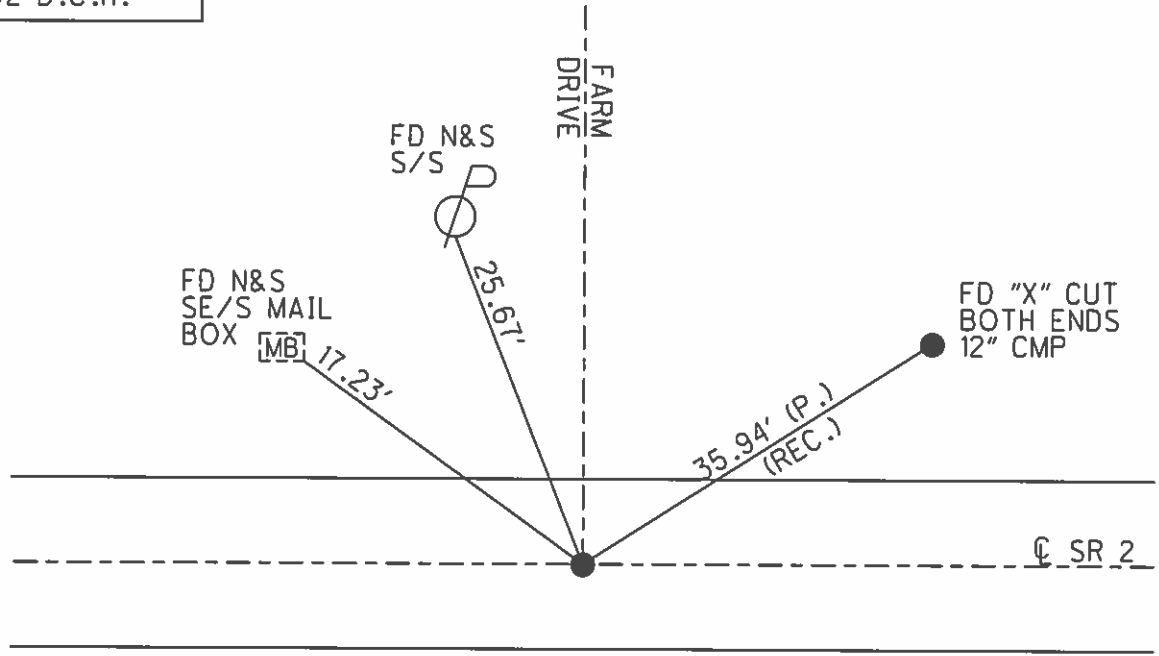
PERSONNEL _____ REFERENCE NO. 17 SHEET 3 OF 11
 NOTES ROUSOS DATE 5/13/02 ROUTE SR 2
 H.C. HOMAN WEATHER WINDY COUNTY FULTON
 R.C. MICHALAK TEMP. 52° TOWNSHIP GERMAN
 SECTION 22
 T 7 N R 5 E

TYPE MONUMENT P.K.NAIL
 ON SURFACE - ~~BELOW~~ ON
~~LEFT - C~~ PAV'T - ~~RIGHT~~ ON
9.7' TO RT EDGE PAVEMENT
 S.L.M. 368+16



GRID: NORTHING: _____ EASTING: _____

SET PK& WASHER
 7-26-02 D.C.H.



O.D.O.T. DISTRICT 2 SURVEY OFFICE

PERSONNEL

REFERENCE NO. 17

SHEET 4 OF 13

NOTES 1. Stone

H.C. D. Curtis

R.C. J. Hausholder

DATE 17 Aug. 87

WEATHER Wet

TEMP. 80°

ROUTE SR 2

COUNTY Fulton

TOWNSHIP German

SECTION 22

T 7 N R 5 E

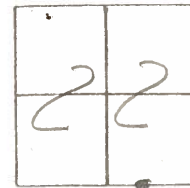
TYPE MONUMENT P.K.

ON SURFACE - ~~BELOW~~ YES

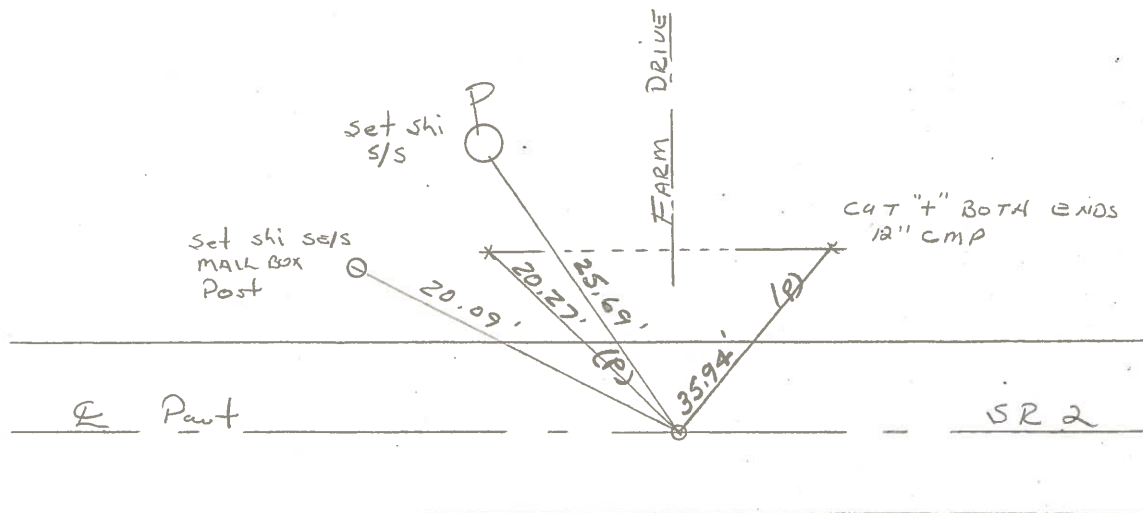
~~LEFT- & PAV'T.~~ - RIGHT YES

9.7 TO RT. EDGE PAVEMENT

S.L.M. 368 + 16



SET P.K. NAIL TO SURFACE
4-29-88



PERSONNEL	TITLE	PERSONNEL	TITLE
Tomsic			
Neuser			
Granata			

COUNTY Fulton DATE MAY 16, 1973
 S. R. 2 WEATHER _____
 SEC. EAST of R.T. 66 TEMP. _____

DESCRIPTION LEFT CENTER LINE RIGHT JOB NO.

