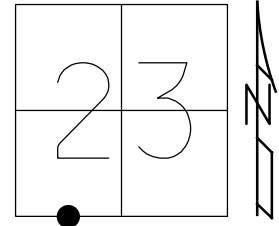


O.D.O.T. DISTRICT 2 SURVEY OFFICE (USE ONLY)

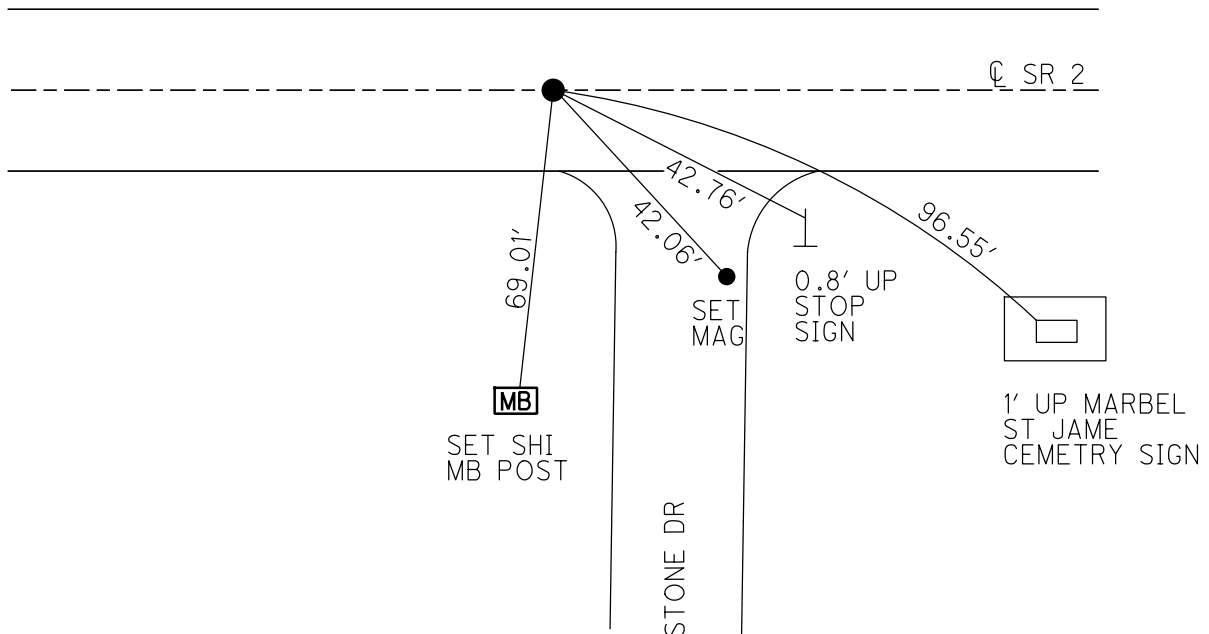
PERSONNEL _____ REFERENCE NO. 18 A SHEET 5 OF 11
 NOTES NIESE DATE 3/5/21 ROUTE SR 2
 H.C. RHOADES WEATHER SUNNY COUNTY FULTON
 R.C. _____ TEMP. 35° TOWNSHIP GERMAN
 DWG BY NIESE PID PAVETRAIN SECTION 23
 T 7 N R 5 E

TYPE MONUMENT MAG/WASHER
 ON SURFACE - ~~BELOW~~ ON
 OFFSET Q PAVEMENT 1' ~~LT~~ : RT
11.9' TO RT EDGE PAVEMENT
 STATION: 402+52



HORZ. DATUM: NAD83 2011 GEOID: NAVD88 2012A
 GRID: NORTHING: 688611.232 EASTING: 1485847.778

RECORD: P.O.T.
 STA. 40+98.62
 FD SM.R.R.SPIKE
 5/13/02, DCH
 SET P.K./WASHER
 7/26/02, DCH
 FD P.K.SHANK
 SET MAG/WASHER
 REFA18
 9/25/20, JFO
 3/5/21, JMR
 7/14/22, TDN



O.D.O.T. DISTRICT 2 SURVEY OFFICE (USE ONLY)

PERSONNEL

REFERENCE NO. 18 A

SHEET 5 OF 11

NOTES NIESE

DATE 3/5/21

ROUTE SR 2

H.C. RHOADES

WEATHER SUNNY

COUNTY FULTON

R.C. _____

TEMP. 35°

TOWNSHIP GERMAN

DWG BY NIESE

PID PAVETRAIN

SECTION 23

T 7 N R 5 E

TYPE MONUMENT MAG/WASHER

ON SURFACE - ~~BELOW~~ ON

OFFSET ☉ PAVEMENT ON LT : RT

11.9' TO RT EDGE PAVEMENT

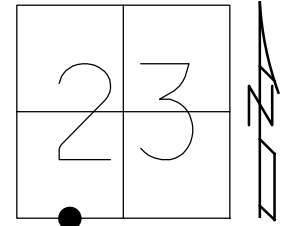
STATION: 402+52

HORZ. DATUM: NAD83 2011

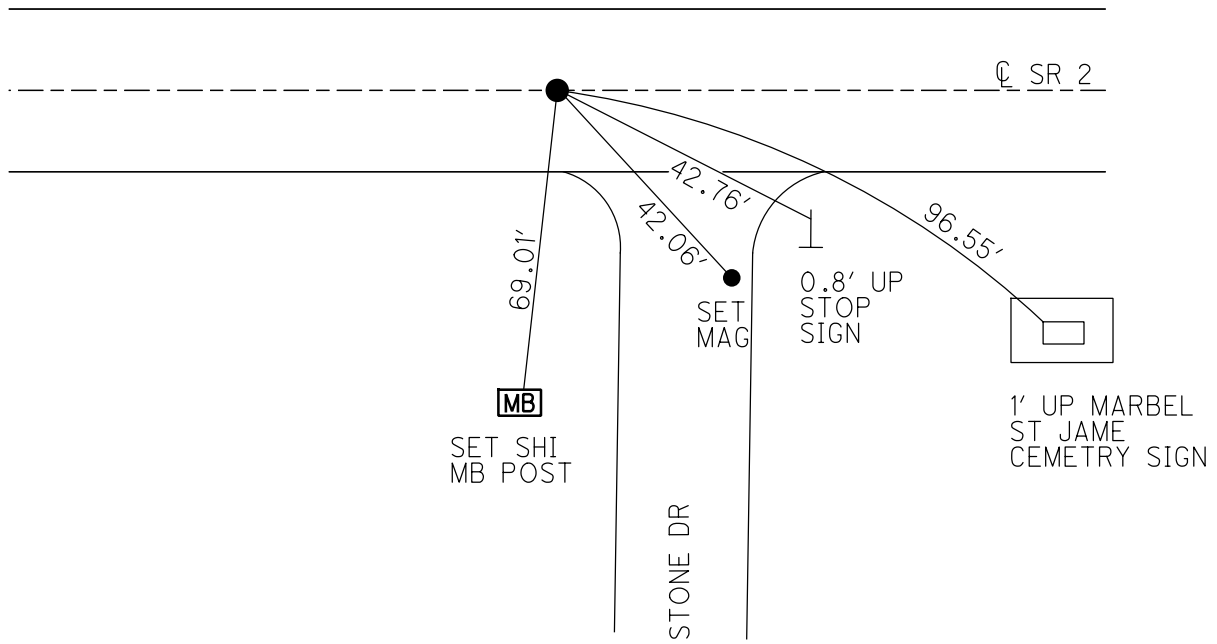
GEOID: NAVD88 2012A

GRID: NORTHING: 688611.232

EASTING: 1485847.778



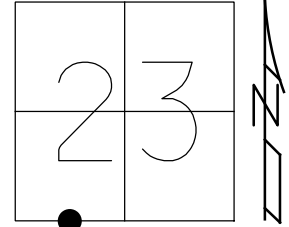
RECORD: P.O.T.
 STA. 40+98.62
 FD SM.R.R.SPIKE
 5/13/02, DCH
 SET P.K./WASHER
 7/26/02, DCH
 FD P.K.SHANK
 SET MAG/WASHER
 REFA18
 9/25/20, JFO
 3/5/21, JMR



O.D.O.T. DISTRICT 2 SURVEY OFFICE (USE ONLY)

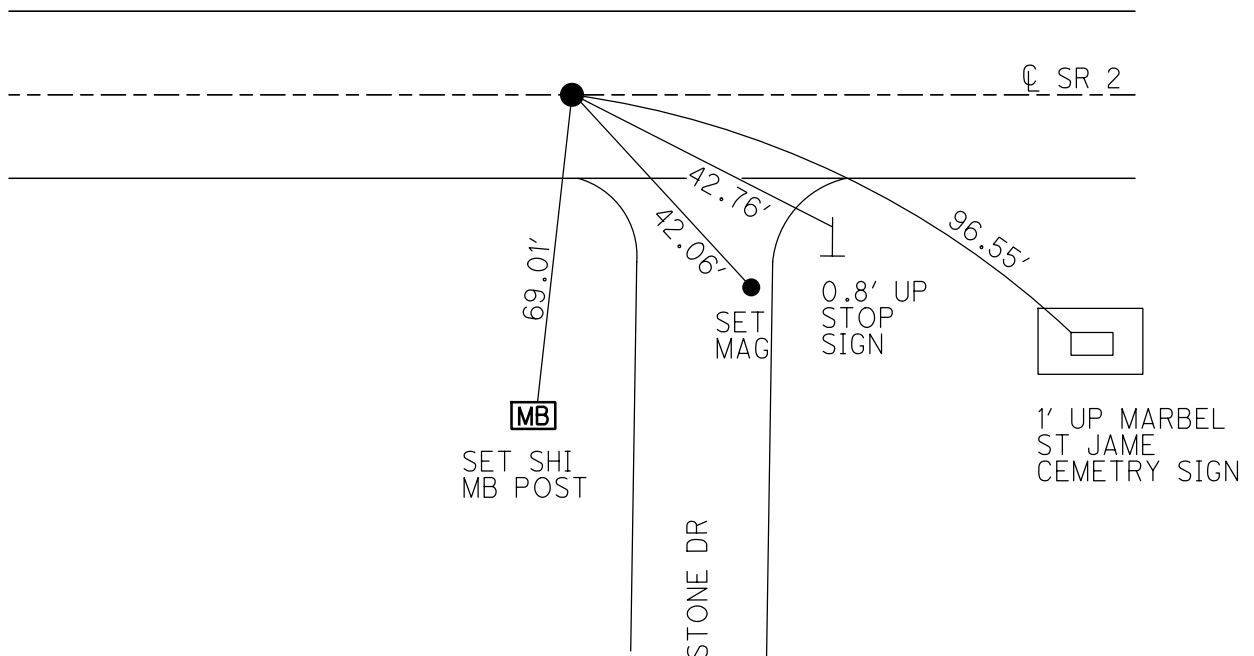
PERSONNEL _____ REFERENCE NO. 18 A SHEET 5 OF 11
 NOTES RHOADES DATE 9/25/20 ROUTE SR 2
 H.C. O'DONNELL WEATHER SUNNY COUNTY FULTON
 R.C. AUBLE TEMP. 54° TOWNSHIP GERMAN
 DWG BY RHOADES PID PAVETRAIN SECTION 23
 T 7 N R 5 E

TYPE MONUMENT MAG/WASHER
 ON SURFACE - ~~BELOW~~ ON
 OFFSET ☐ PAVEMENT ON LT : RT
11.9' TO RT EDGE PAVEMENT
 STATION: 402+52



HORZ. DATUM: NAD83 2011 GEOID: NAVD88 2012A
 GRID: NORTHING: 688611.232 EASTING: 1485847.778

RECORD: P.O.T.
 STA. 40+98.62
 FD SM.R.R.SPIKE
 5/13/02, DCH
 SET P.K./WASHER
 7/26/02, DCH
 FD P.K.SHANK
 SET MAG/WASHER
 REFA18
 9/25/20, JFO



O.D.O.T. DISTRICT 2 SURVEY OFFICE (USE ONLY)

PERSONNEL _____ REFERENCE NO. 18 A SHEET 5 OF 11

NOTES ROUSOS DATE 5/13/02 ROUTE SR 2

H.C. HOMAN WEATHER WINDY COUNTY FULTON

R.C. MICHALAK TEMP. 52° TOWNSHIP GERMAN

SECTION 23

T 7 N R 5 E

TYPE MONUMENT SM.R.R.SPIKE

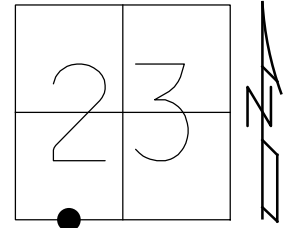
ON SURFACE - ~~BELOW~~ ON _____

~~LEFT~~ - Q PAV'T - ~~RIGHT~~ ON _____

11.9' TO RT EDGE PAVEMENT

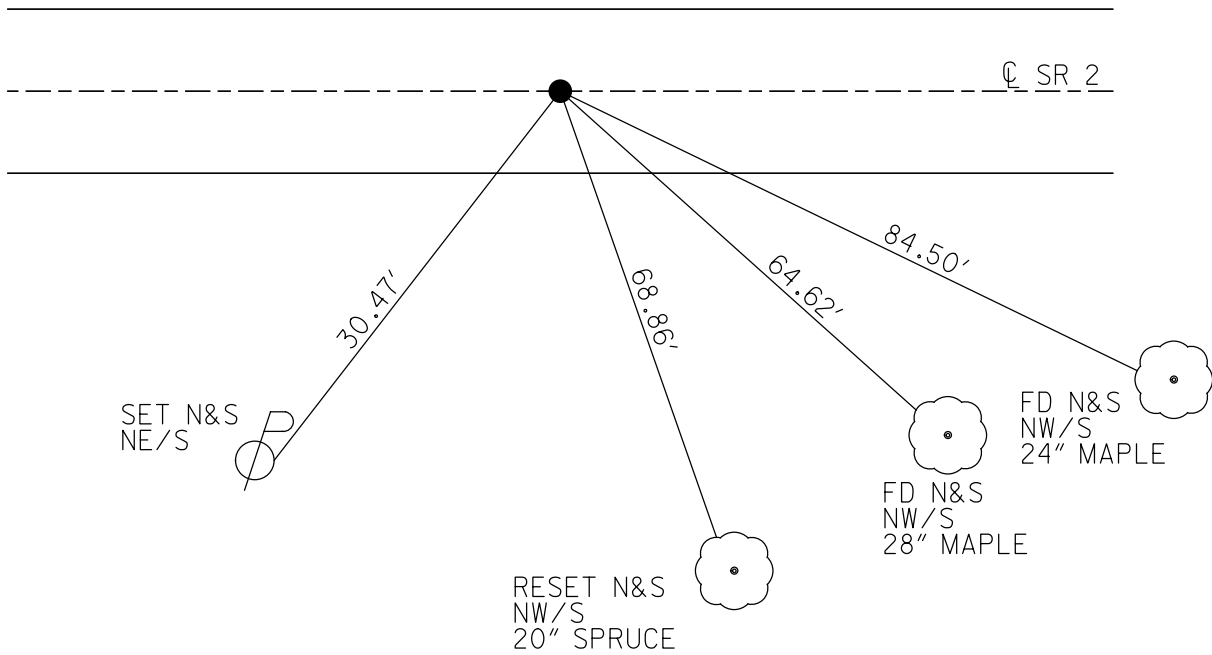
S.L.M. 402+52

GRID: NORTHING: _____ EASTING: _____



SET PK& WASHER
7-26-02 D.C.H.

RECORD:
P.O.T. 402+98.62



O.D.O.T. DISTRICT 2 SURVEY OFFICE

PERSONNEL

REFERENCE NO. 18-A

SHEET 6 OF 13

NOTES 1. Stone

H.C. D. Curtis

DATE 17 Aug. 87

ROUTE SR 2

R.C. J. Haushalter

WEATHER Warm

COUNTY Fulton

TEMP. 80°

TOWNSHIP GERMAN

SECTION 23

T 7 N R 5 E

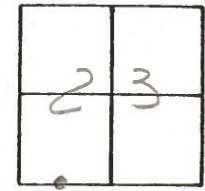
TYPE MONUMENT SMALL RR SPIKE

ON SURFACE - ~~BELOW~~ YES

~~LEFT - & PAV'T. - RIGHT~~ YES

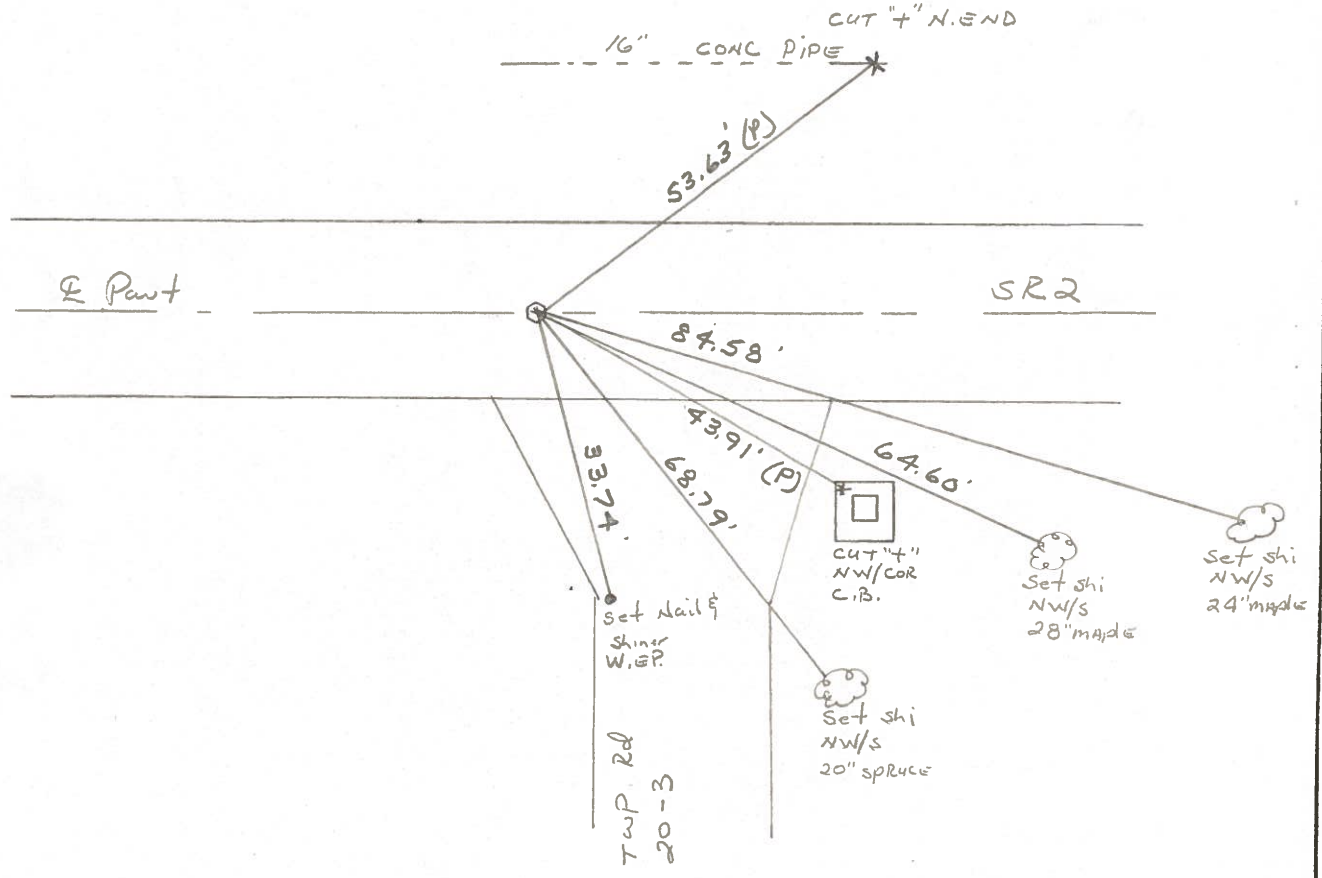
11.9 TO LT EDGE PAVEMENT

S.L.M. 402 + 52



RECORD:
P.O.T. 402 + 98.62

SET SMALL R.R. SPIKE TO SURFACE
4-29-88



PERSONNEL TITLE PERSONNEL TITLE

Red Beach
Knappe
Newcomb

COUNTY Fulton

DATE 10 July 78

S. R. 2

WEATHER _____

SEC. GERMAN TWP.

TEMP. _____

DESCRIPTION

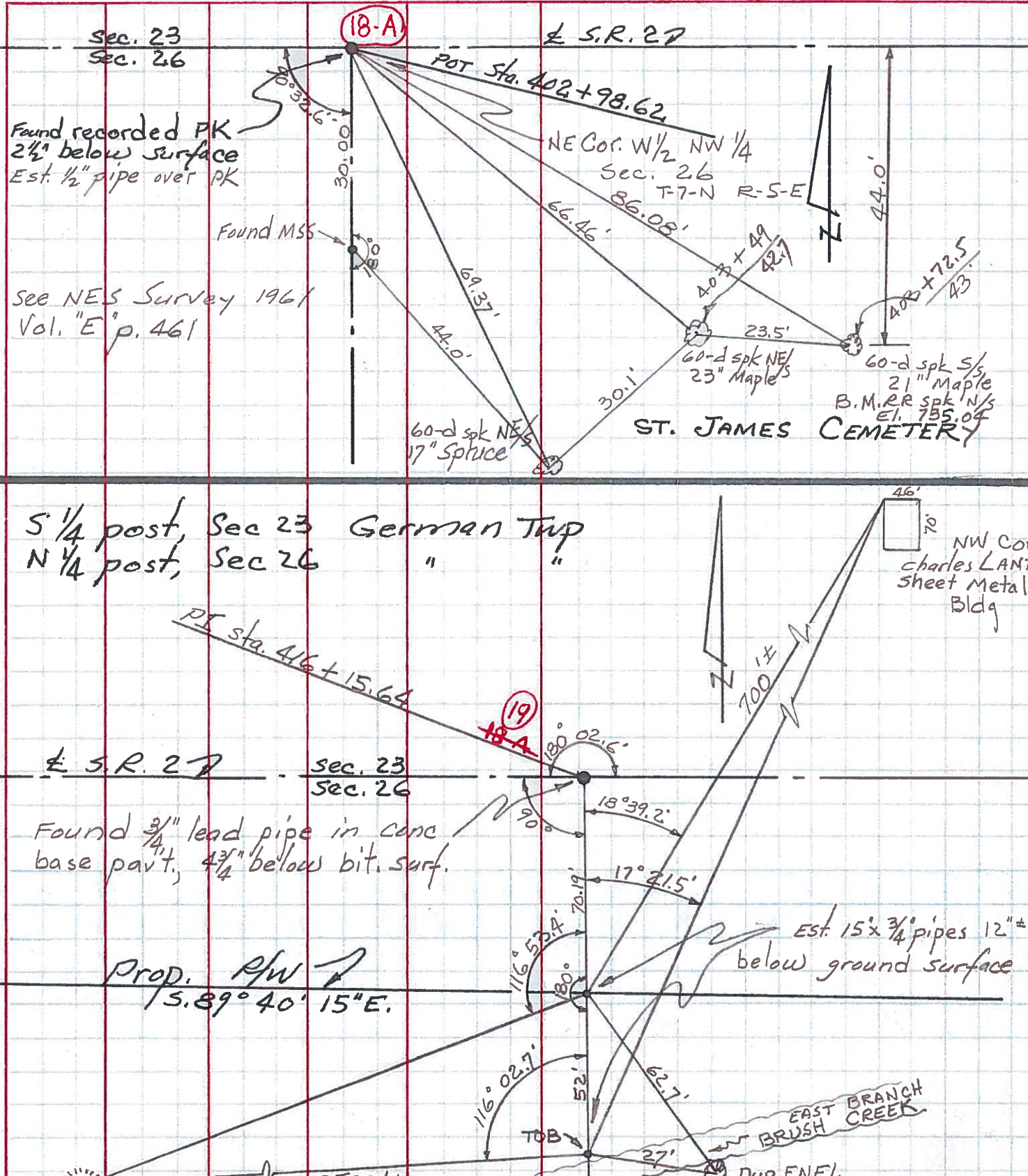
CONTROL POINTS

JOB NO. _____

LEFT

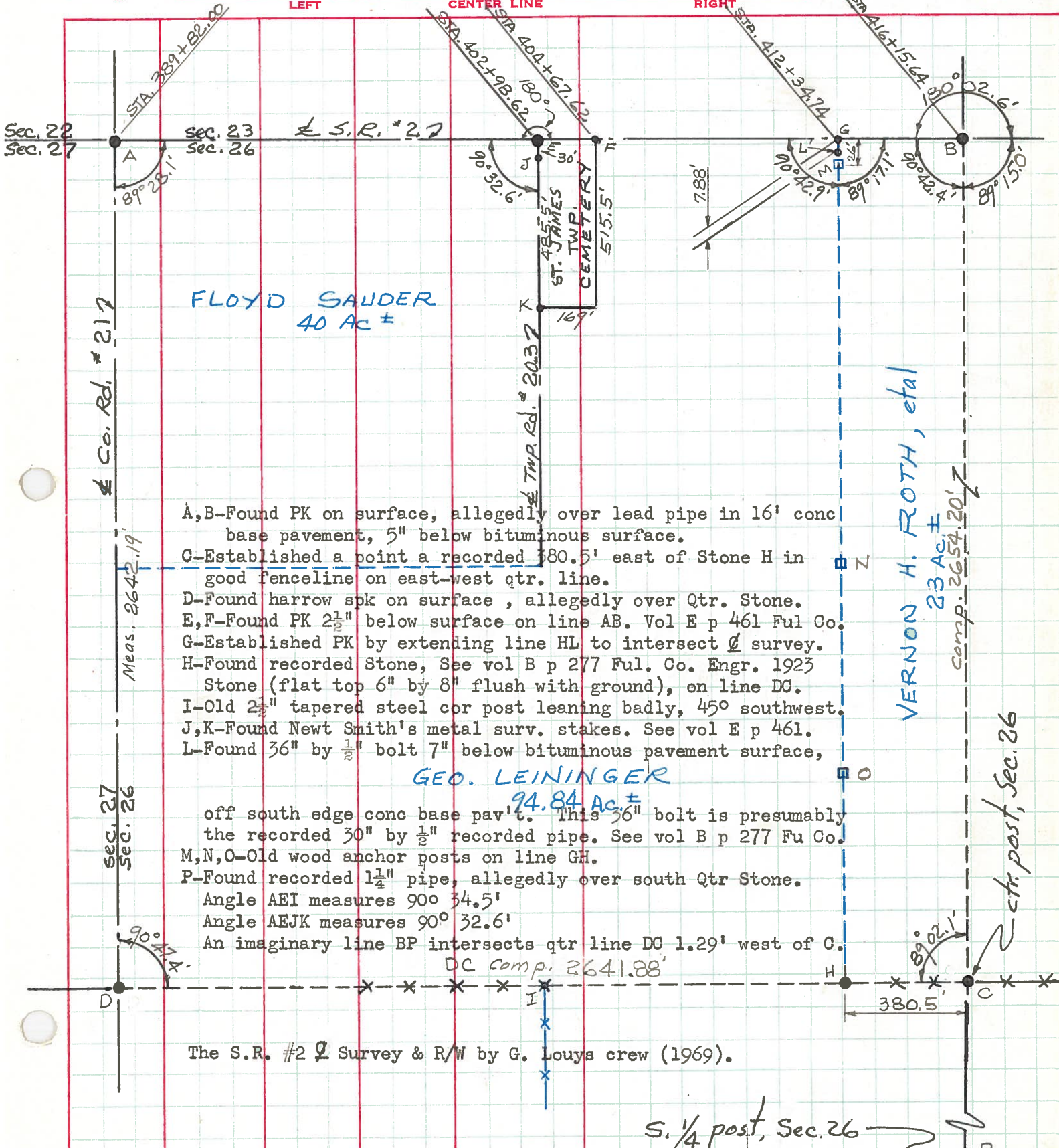
CENTER LINE

RIGHT



PERSONNEL TITLE PERSONNEL TITLE COUNTY FULTON DATE MAR. 1972
 Red Beach, Newcomb S. R. #2 WEATHER Marchy
 Knappe
 Wise SEC. NW 1/4 Sec. 26 TEMP.

DESCRIPTION GERMAN TWP. T-7-N R-5-E JOB NO. 02825 (0)



FLOYD SAUDER
40 Ac ±

VERNON H. ROTH, et al
23 Ac ±
comp. 2654.20'

GEO. LEININGER
94.84 Ac ±

- A, B-Found PK on surface, allegedly over lead pipe in 16' conc base pavement, 5" below bituminous surface.
- C-Established a point a recorded 380.5' east of Stone H in good fenceline on east-west qtr. line.
- D-Found harrow spk on surface, allegedly over Qtr. Stone.
- E, F-Found PK 2 1/2" below surface on line AB. Vol E p 461 Ful Co.
- G-Established PK by extending line HL to intersect Q survey.
- H-Found recorded Stone, See vol B p 277 Ful. Co. Engr. 1923 Stone (flat top 6" by 8" flush with ground), on line DC.
- I-Old 2 1/2" tapered steel cor post leaning badly, 45° southwest.
- J, K-Found Newt Smith's metal surv. stakes. See vol E p 461.
- L-Found 3/8" by 1/2" bolt 7" below bituminous pavement surface,

off south edge conc base pav't. This 3/8" bolt is presumably the recorded 30" by 1/2" recorded pipe. See vol B p 277 Fu Co.
 M, N, O-Old wood anchor posts on line GH.
 P-Found recorded 1 1/4" pipe, allegedly over south Qtr Stone.
 Angle AEI measures 90° 34.5'
 Angle AEJK measures 90° 32.6'
 An imaginary line BP intersects qtr line DC 1.29' west of C.
 DC comp. 2641.88'

The S.R. #2 Survey & R/W by G. Louys crew (1969).

S. 1/4 post, Sec. 26