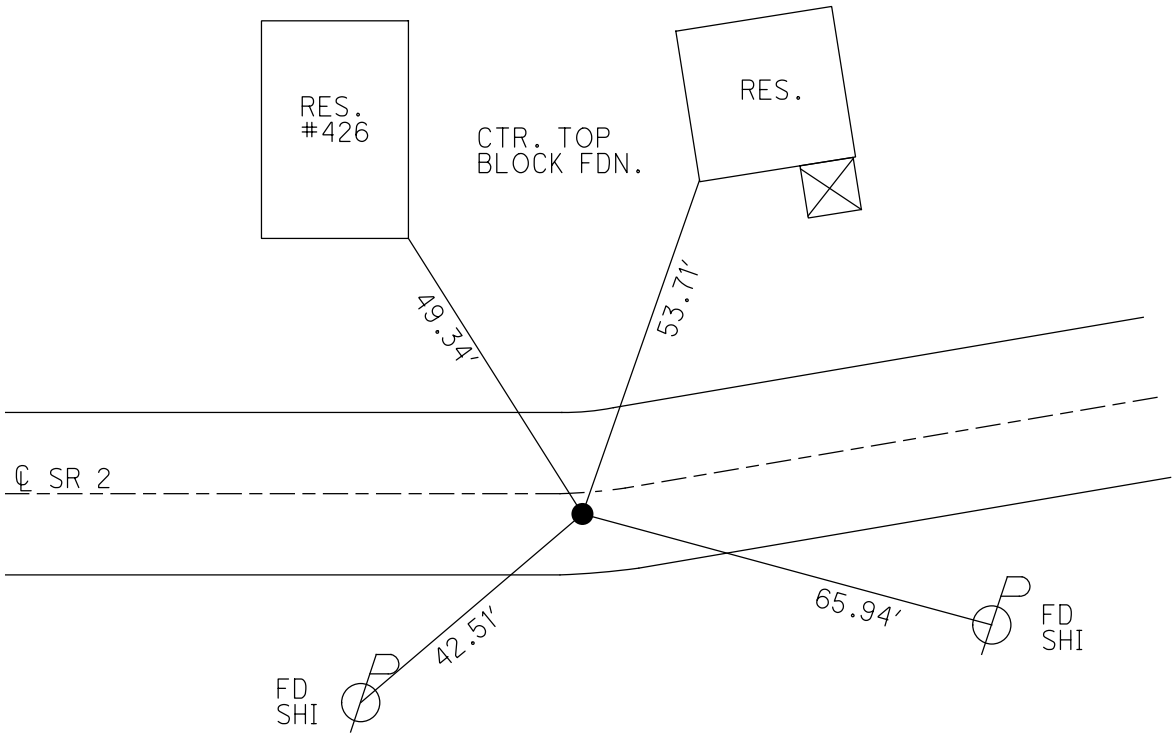
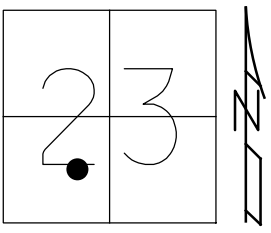


O.D.O.T. DISTRICT 2 SURVEY OFFICE (USE ONLY)

PERSONNEL _____ REFERENCE NO. 31 SHEET 12 OF 16
 NOTES BARNHISEL DATE 9/24/96 ROUTE SR 2
 H.C. CORDES WEATHER SUNNY COUNTY FULTON
 R.C. BARNHISEL TEMP. 70° TOWNSHIP CLINTON
 _____ SECTION 23
 _____ T 7 N R 6 E

TYPE MONUMENT P.K.NAIL
 ON SURFACE - ~~BELOW~~ ON
~~LEFT~~ - CL PAV'T - RIGHT 1.4'
10.6' TO RT EDGE PAVEMENT
 S.L.M. 729+51.42
 Grid: Northing: 689686.370 Easting: 1517137.714



RECORD:
 SET P.K./WASHER
 10/11/96, BVD
 FD HOLE
 REF 49
 5/31/12

O.D.O.T. DISTRICT 2 SURVEY OFFICE

PERSONNEL

REFERENCE NO. 31

SHEET 11 OF 14

NOTES BARNHISEL

H.C. CORDES

DATE 9-24-96

ROUTE SR. 2

R.C. BARNHISEL

WEATHER SUNNY

COUNTY FULTON

TEMP. +70°F

TOWNSHIP CLINTON

SECTION 21

T. 2 N R. 6 E

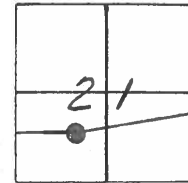
TYPE MONUMENT PK NAIL

ON SURFACE - ~~BELOW~~ YES

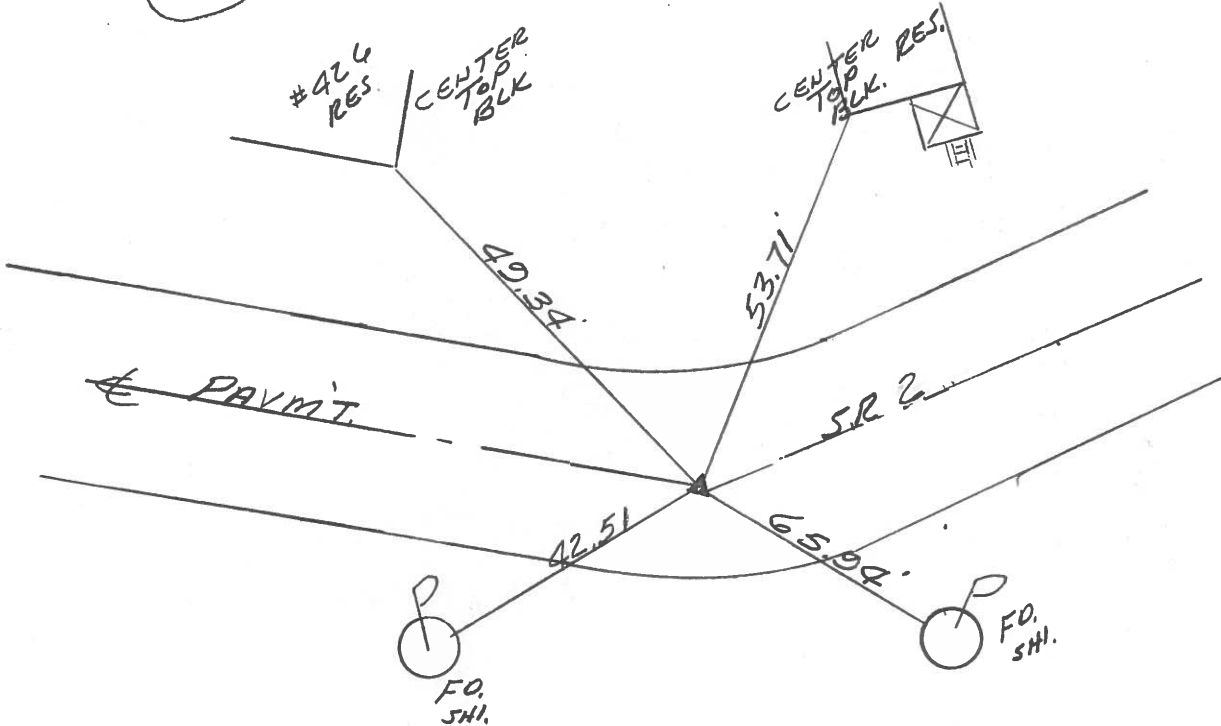
~~LEFT~~ - & PAV'T. - RIGHT 1.4

10.6 TO RT. EDGE PAVEMENT

S.L.M. 726+94



SET PK/WASHER
10-11-96
BVD



O.D.O.T. DISTRICT 2 SURVEY OFFICE

PERSONNEL

REFERENCE NO. 31

SHEET 11 OF

NOTES 1. Stone

H.C. D. Curtis

R.C. J. Hausholder

DATE 25 April 89

WEATHER Cloudy

TEMP. 66°

ROUTE SR#2

COUNTY Fulton

TOWNSHIP Clinton

SECTION 21

T R

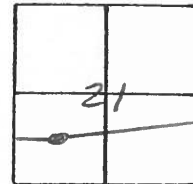
TYPE MONUMENT PK Nail

ON SURFACE - BELOW Surface

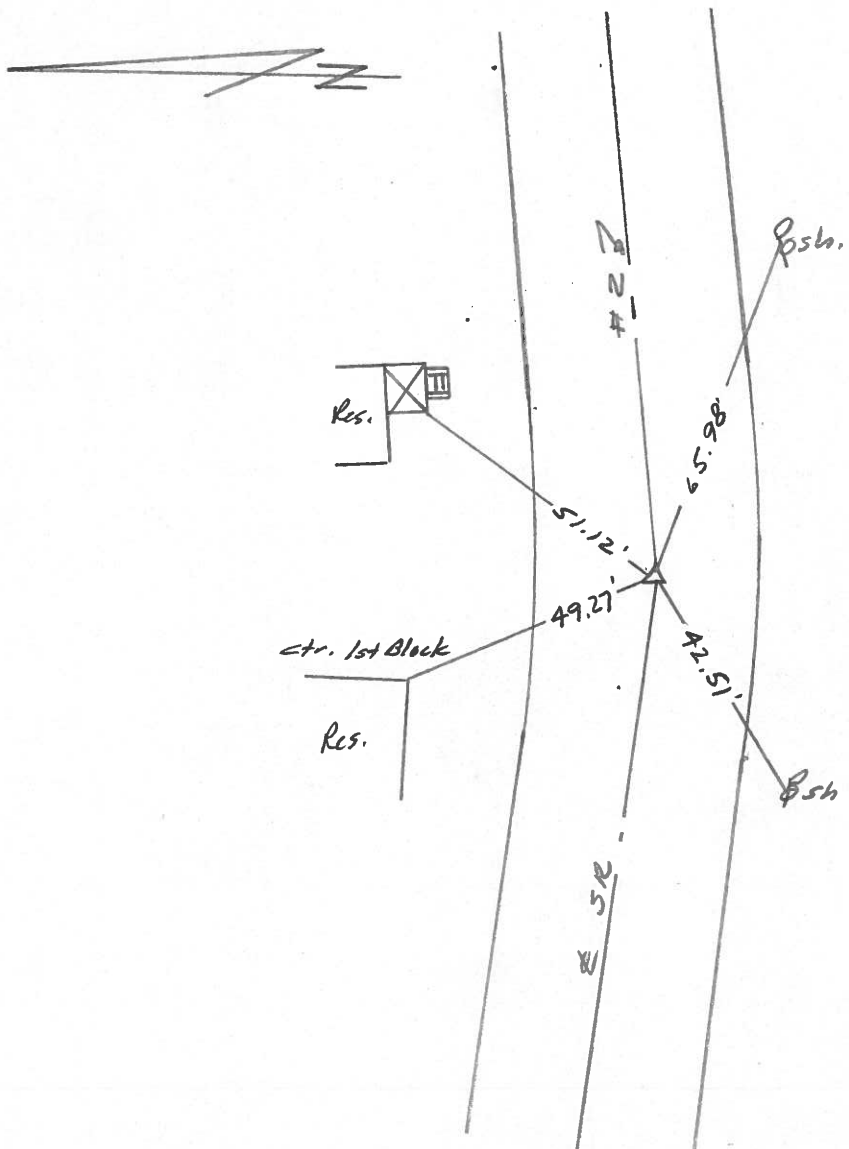
LEFT - & PAV'T. - RIGHT

 TO EDGE PAVEMENT

S.L.M. 727+81



OK 5/30/89 IRS



PERSONNEL	TITLE	PERSONNEL	TITLE	COUNTY	DATE
Stone				Fulton	22 Aug. 77
				S. R. #2	WEATHER Cloudy
				SEC. Wauscon	TEMP. 62°

DESCRIPTION _____ *References* _____ JOB NO. _____

LEFT CENTER LINE RIGHT

