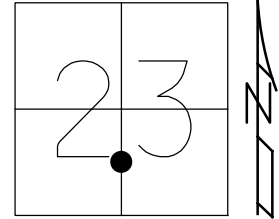


O.D.O.T. DISTRICT 2 SURVEY OFFICE (USE ONLY)

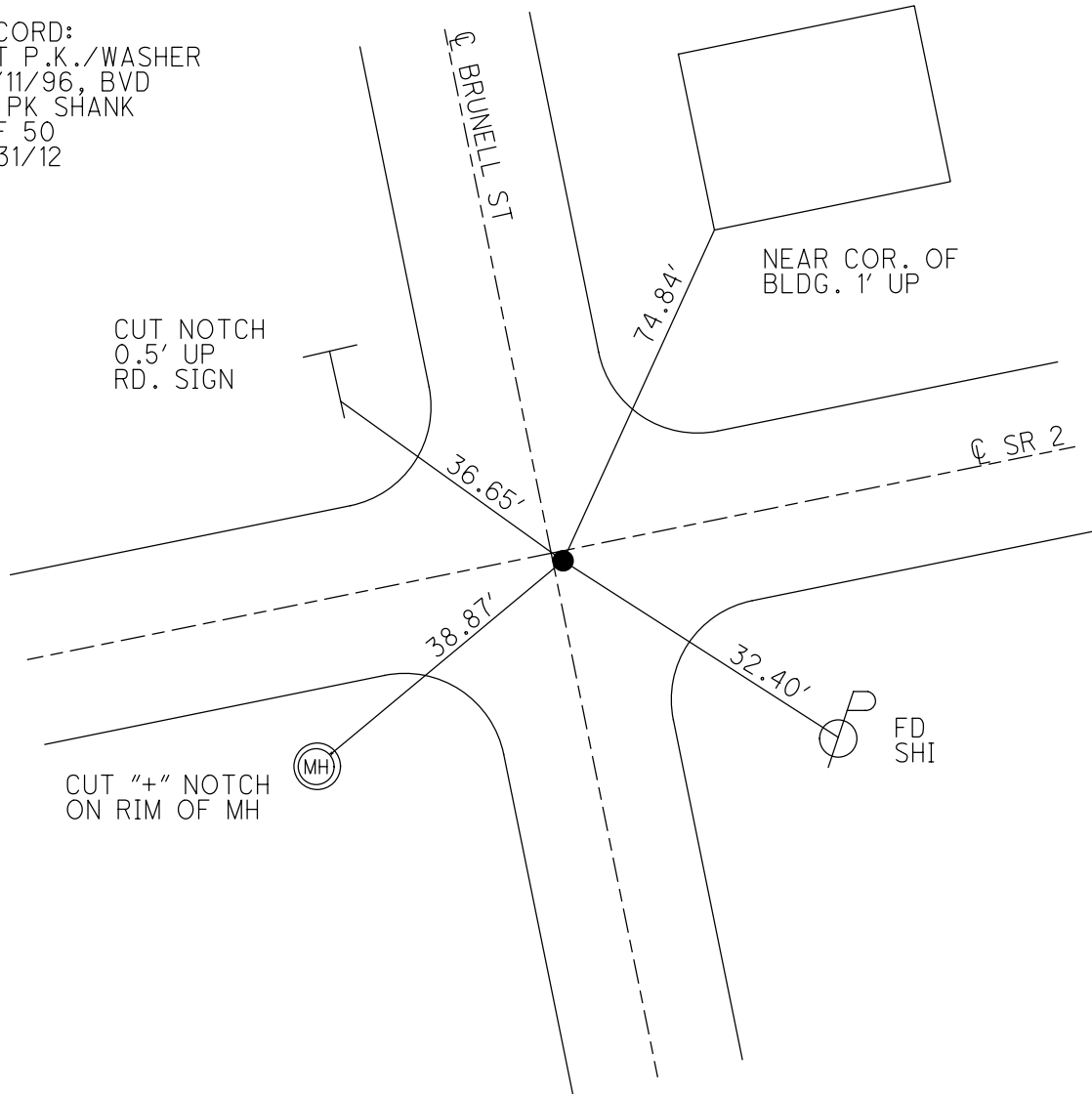
PERSONNEL _____ REFERENCE NO. 32 SHEET 13 OF 16
 NOTES BARNHEISEL DATE 9/24/96 ROUTE SR 2
 H.C. CORDES WEATHER SUNNY COUNTY FULTON
 R.C. BARNHEISEL TEMP. 70° TOWNSHIP CLINTON
 _____ SECTION 23
 _____ T 7 N R 6 E

TYPE MONUMENT P.K.NAIL
 ON SURFACE - ~~BELOW~~ ON
~~LEFT~~ - CL PAV'T - RIGHT 0.5'
12.1' TO RT EDGE PAVEMENT
 S.L.M. 736+59.48



Grid: Northing: 689822.421 Easting: 1517832.573

RECORD:
 SET P.K./WASHER
 10/11/96, BVD
 FD PK SHANK
 REF 50
 5/31/12



O.D.O.T. DISTRICT 2 SURVEY OFFICE

PERSONNEL

REFERENCE NO. 32

SHEET 12 OF 14

NOTES MIKE BARNHISEL

H.C. BEN COROES

DATE 9-24-96

ROUTE S.R. 2

R.C. MIKE BARNHISEL

WEATHER SUNNY

COUNTY FULTON

TEMP. +70°F

TOWNSHIP CLINTON

SECTION 21

T 7 N R 6 E

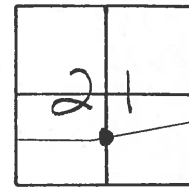
TYPE MONUMENT PK NAIL

ON SURFACE - BELOW SURFACE

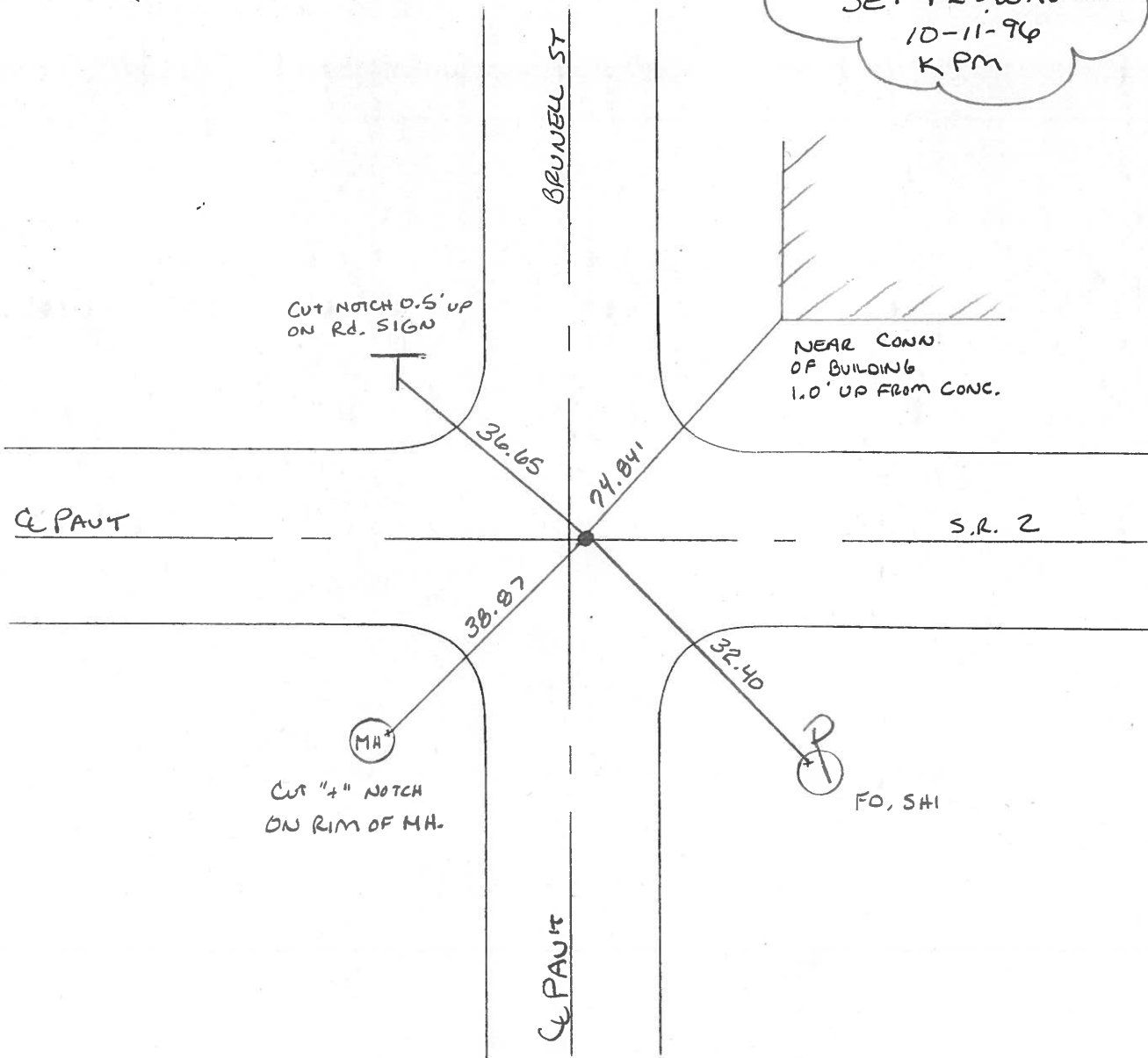
LEFT ~~Q PAUT~~ T. - RIGHT 0.5'

12.1 TO RT EDGE PAVEMENT

S.L.M. 733 +06



SET PK & WASHER
10-11-96
K PM



NEAR CORN
OF BUILDING
1.0' UP FROM CONC.

FO, SHI

O.D.O.T. DISTRICT 2 SURVEY OFFICE

PERSONNEL

REFERENCE NO. 32

SHEET 12 OF

NOTES 1. Stone

H.C. D. Curtis

R.C. J. Hausholder

DATE 26 April 89

WEATHER Cloudy

TEMP. 60°

ROUTE SR#2

COUNTY Fulton

TOWNSHIP Clinton

SECTION

T R

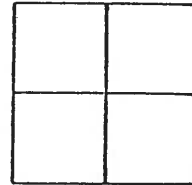
TYPE MONUMENT PK Nail

ON SURFACE - BELOW Surface

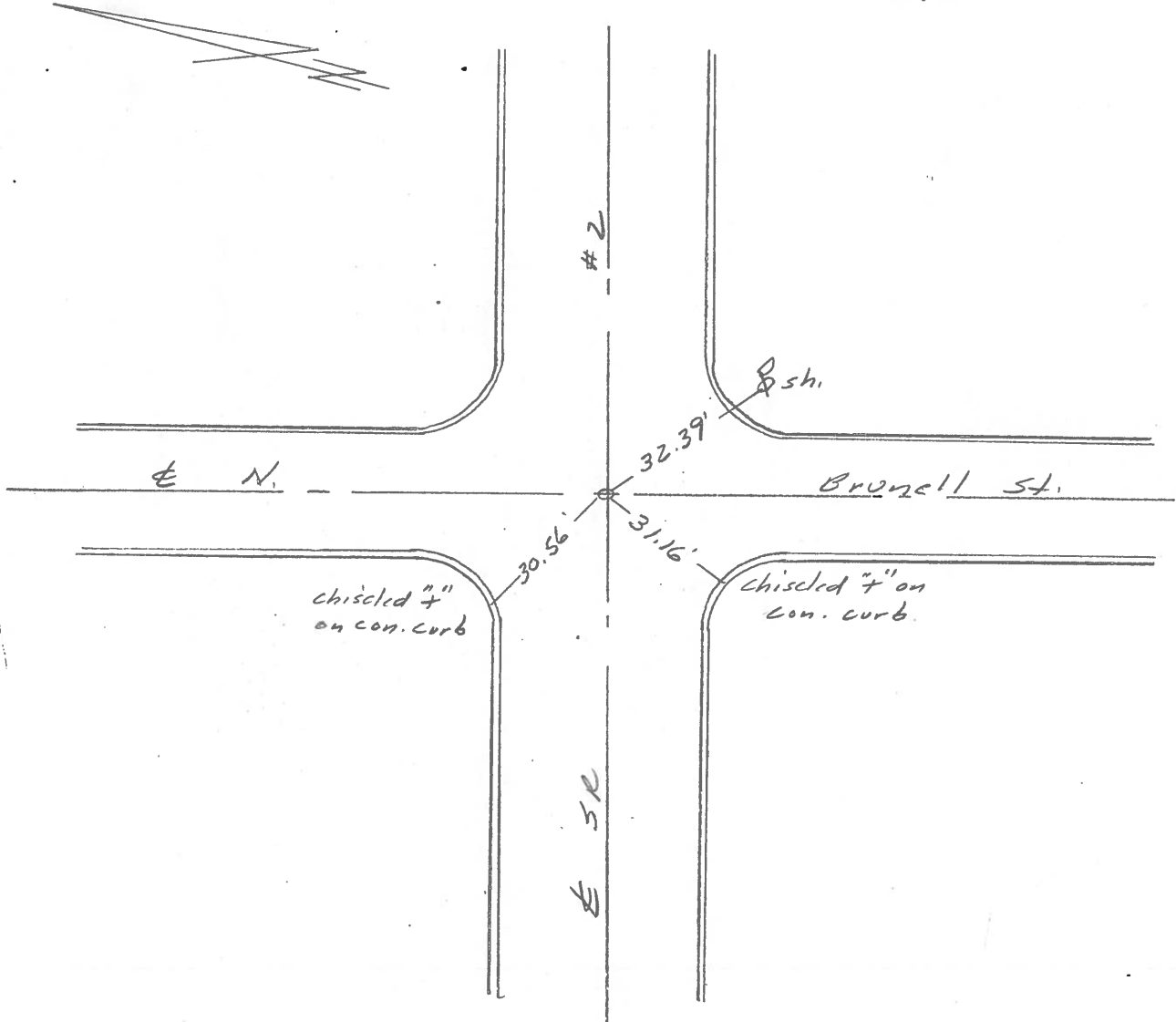
LEFT - \oplus PAV'T. - RIGHT

 TO EDGE PAVEMENT

S.L.M. 734+87



OK 5/30/89 IRS.



PERSONNEL TITLE PERSONNEL TITLE

Stone COUNTY Fulton DATE 22 Aug. 77

Curbs S. R. # 2 WEATHER Cloudy

SEC. Wauscon TEMP. 62'

DESCRIPTION References LEFT CENTER LINE RIGHT JOB NO.

