

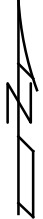
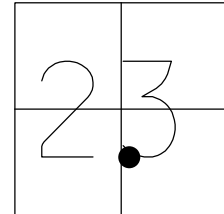
O.D.O.T. DISTRICT 2 SURVEY OFFICE (USE ONLY)

PERSONNEL \_\_\_\_\_ REFERENCE NO. 33 SHEET 14 OF 16

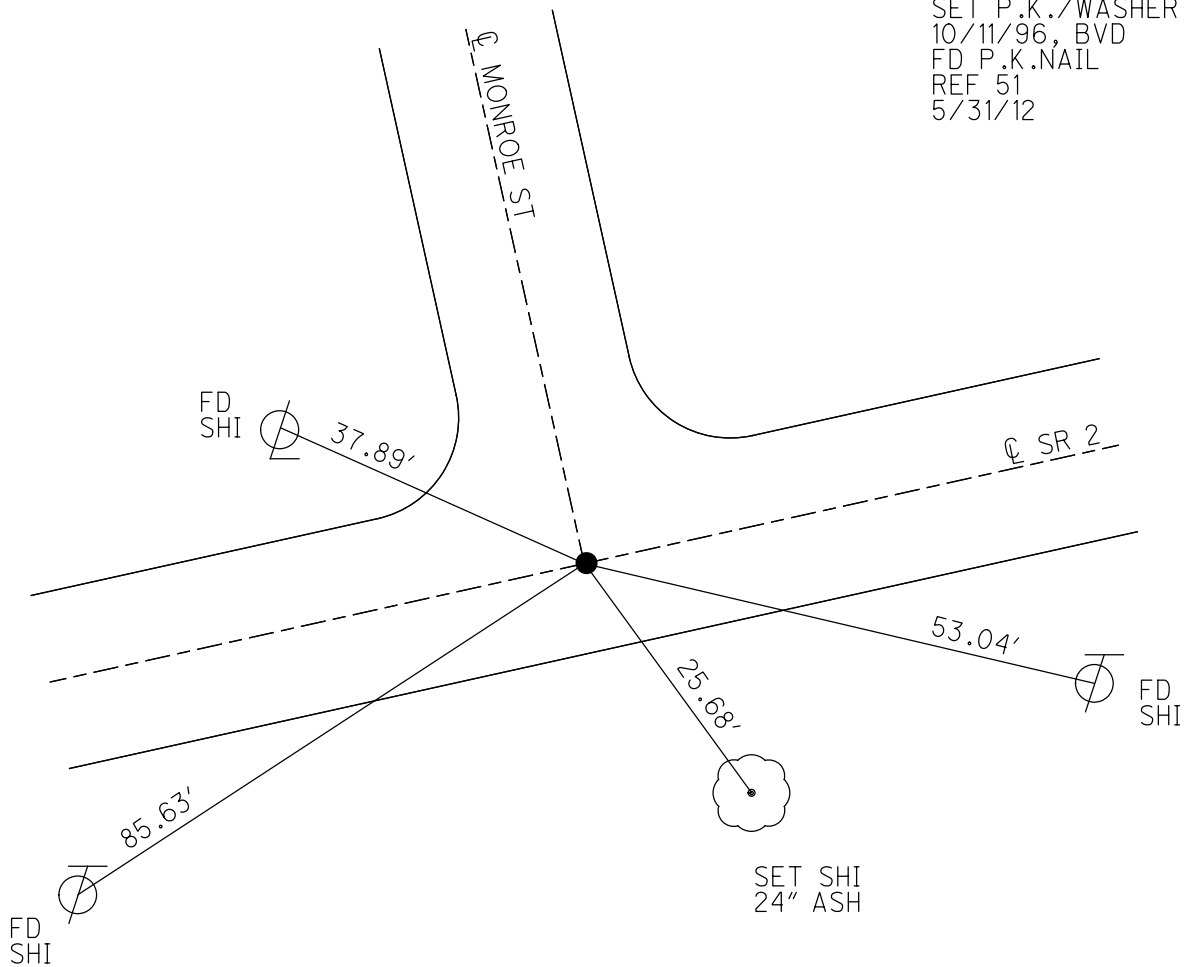
NOTES BARNHEISEL DATE 9/24/96 ROUTE SR 2  
 H.C. CORDES WEATHER SUNNY COUNTY FULTON  
 R.C. BARNHEISEL TEMP. 70° TOWNSHIP CLINTON  
 \_\_\_\_\_ SECTION 23  
 \_\_\_\_\_ T 7 N R 6 E

TYPE MONUMENT P.K.NAIL  
 ON SURFACE - ~~BELOW~~ ON  
 LEFT - ☉ PAV'T - RIGHT ON  
11.9' TO RT EDGE PAVEMENT  
 S.L.M. 740+08.71

Grid: Northing: 689889.089 Easting: 1518175.388



RECORD:  
 SET P.K./WASHER  
 10/11/96, BVD  
 FD P.K.NAIL  
 REF 51  
 5/31/12



# O.D.O.T. DISTRICT 2 SURVEY OFFICE

PERSONNEL \_\_\_\_\_

REFERENCE NO. 33

SHEET 13 OF 14

NOTES BARNHISEL

H.C. CORDES

DATE 9-24-96

ROUTE SR. 2

R.C. BARNHISEL

WEATHER JUNNY

COUNTY FULTON

TEMP. +70° F

TOWNSHIP CLINTON

SECTION 21

T.7 N R.6 E

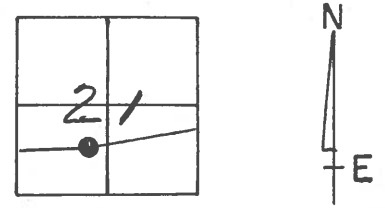
TYPE MONUMENT PK NAIL

ON SURFACE - ~~BELOW~~ YES

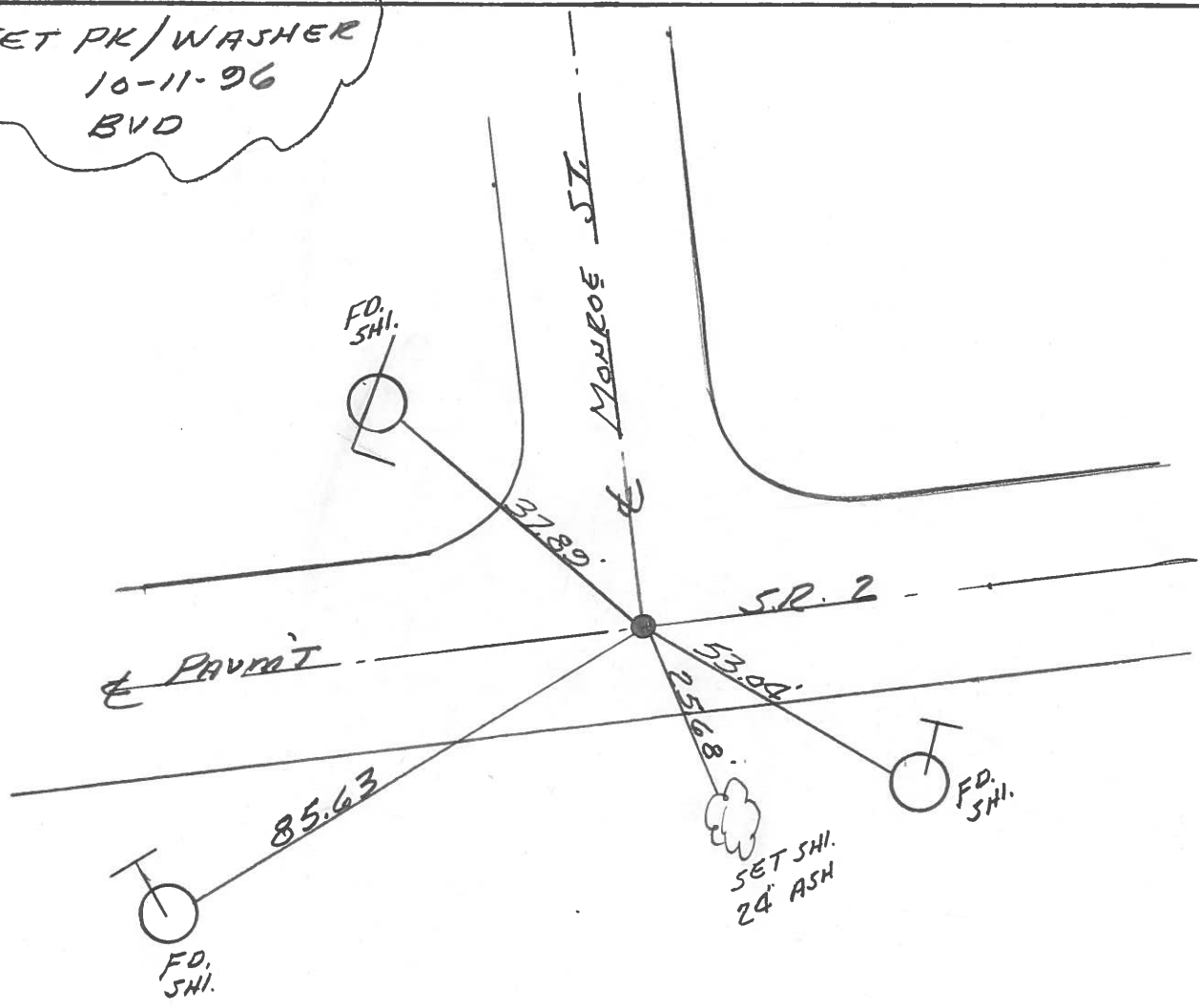
LEFT - & PAV'T. - RIGHT YES

11.9 TORT. EDGE PAVEMENT

S.L.M. 736+54 ON E TO NORTH



SET PK/WASHER  
 10-11-96  
 BVD



O.D.O.T. DISTRICT 2 SURVEY OFFICE

PERSONNEL

REFERENCE NO. 33

SHEET 13 OF     

NOTES 1. Stone

H.C. D. Curtis

R.C. J. Hausholder

DATE 26 April 89

WEATHER Cloudy

TEMP. 61°

ROUTE SR # 2

COUNTY Fulton

TOWNSHIP Clinton

SECTION     

T      R     

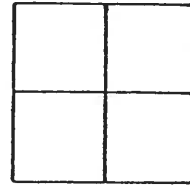
TYPE MONUMENT PK Nail

ON SURFACE - BELOW Surface

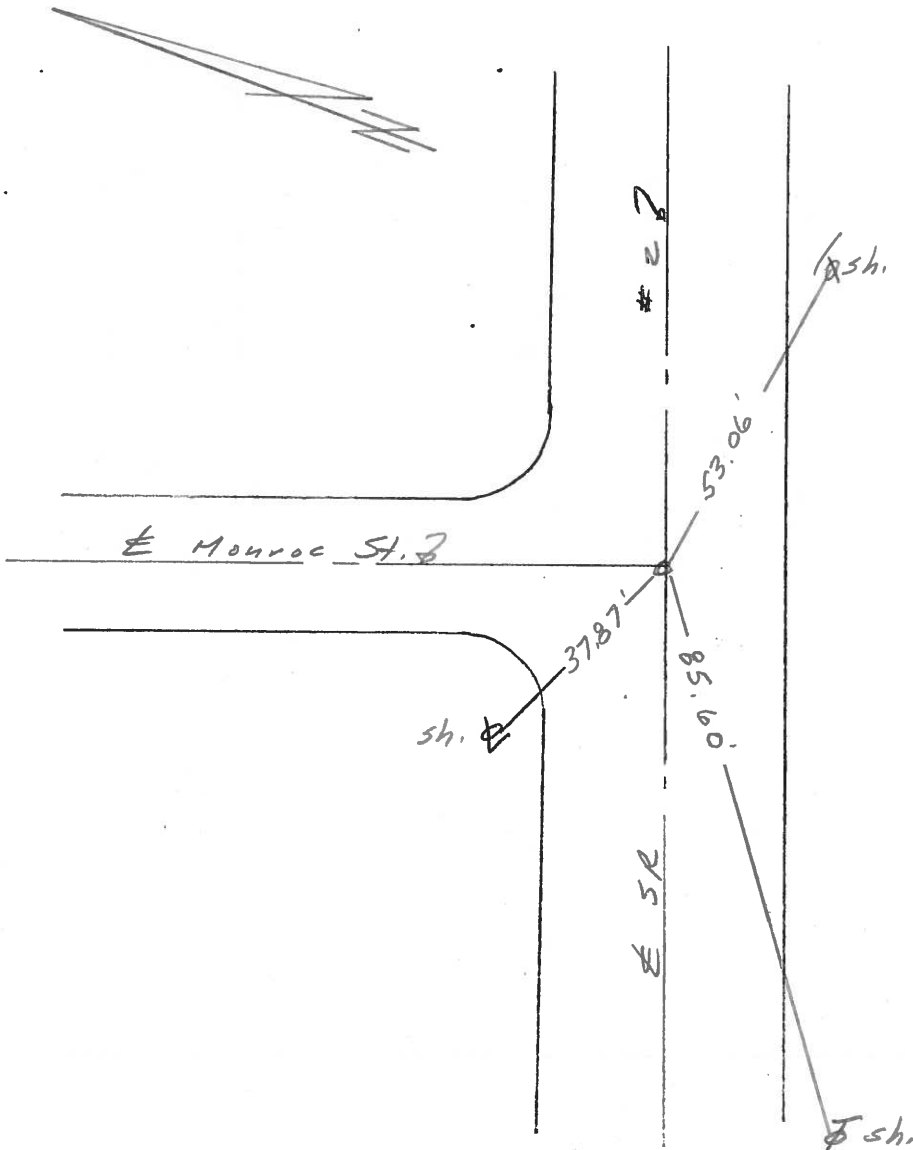
LEFT -  $\odot$  PAV'T. - RIGHT     

     TO      EDGE PAVEMENT

S.L.M. 738+36



OK 5/30/89 IRS



PERSONNEL	TITLE	PERSONNEL	TITLE	COUNTY	DATE	WEATHER	TEMP.
Stone				Fulton	22 Aug. 77	Cloudy	62°
¶				#2			
Crow							
				SEC. Weuscan			

DESCRIPTION \_\_\_\_\_ *R. Lawrence* \_\_\_\_\_ JOB NO. \_\_\_\_\_

