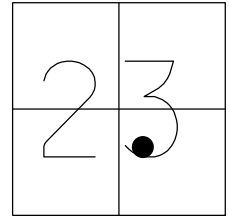


O.D.O.T. DISTRICT 2 SURVEY OFFICE (USE ONLY)

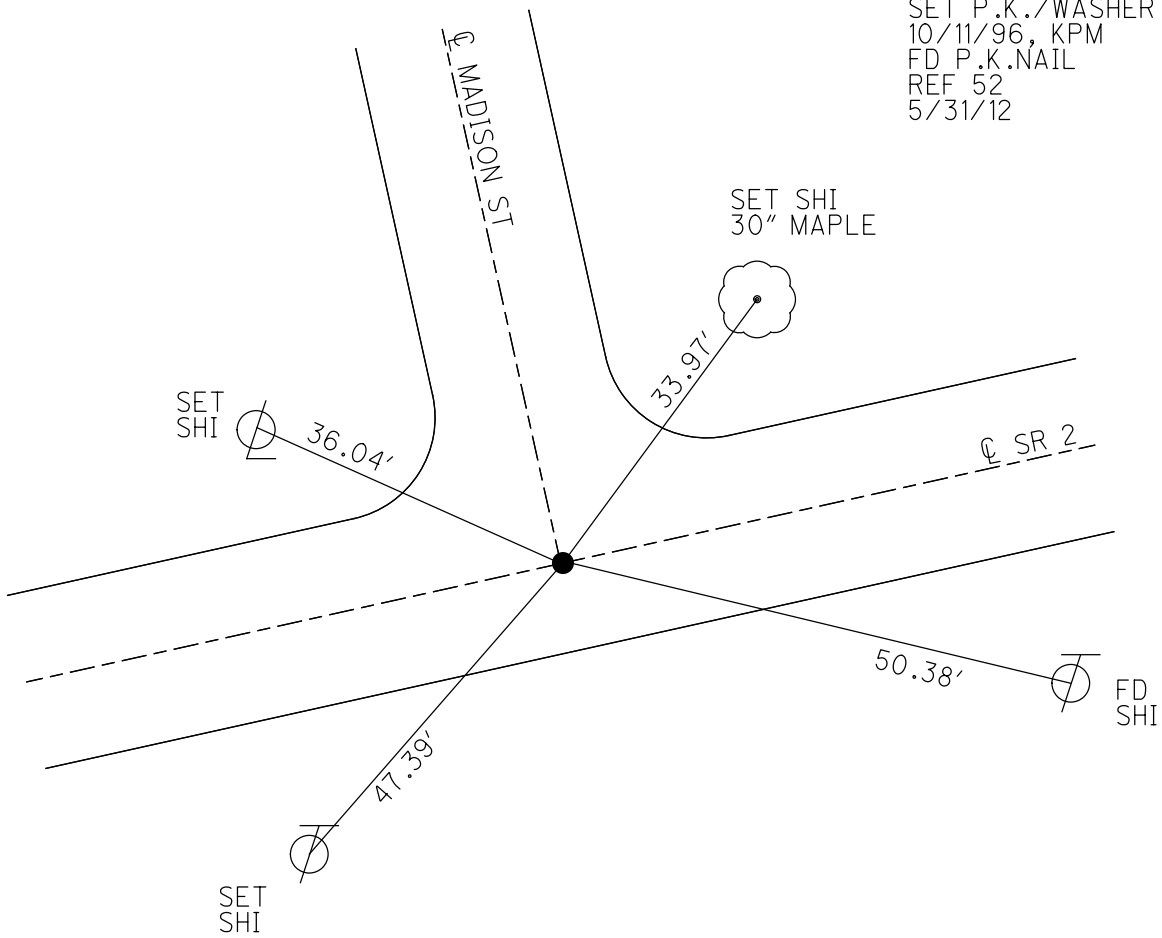
PERSONNEL _____ REFERENCE NO. 34 SHEET 15 OF 16
 NOTES BARNHEISEL DATE 9/24/96 ROUTE SR 2
 H.C. CORDES WEATHER SUNNY COUNTY FULTON
 R.C. BARNHEISEL TEMP. 70° TOWNSHIP CLINTON
 _____ SECTION 23
 _____ T 7 N R 6 E

TYPE MONUMENT P.K.NAIL
 ON SURFACE - ~~BELOW~~ ON
 LEFT - ☉ PAV'T - RIGHT ON
12.2' TO RT EDGE PAVEMENT
 S.L.M. 743+31.54



Grid: Northing: 689951.345 Easting: 1518492.150

RECORD:
 SET P.K./WASHER
 10/11/96, KPM
 FD P.K.NAIL
 REF 52
 5/31/12



O.D.O.T. DISTRICT 2 SURVEY OFFICE

PERSONNEL _____

REFERENCE NO. 34

SHEET 14 OF 14

NOTES MIKE BARNHISEL

H.C. BEN CORDES

DATE 9-24-96

ROUTE S.R. 2

R.C. MIKE BARNHISEL

WEATHER SUNNY

COUNTY FULTON

TEMP. +70°F

TOWNSHIP CLINTON

SECTION 21

T4 N R6 E

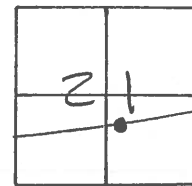
TYPE MONUMENT PK NAIL

ON SURFACE - ~~BELOW~~ SURFACE

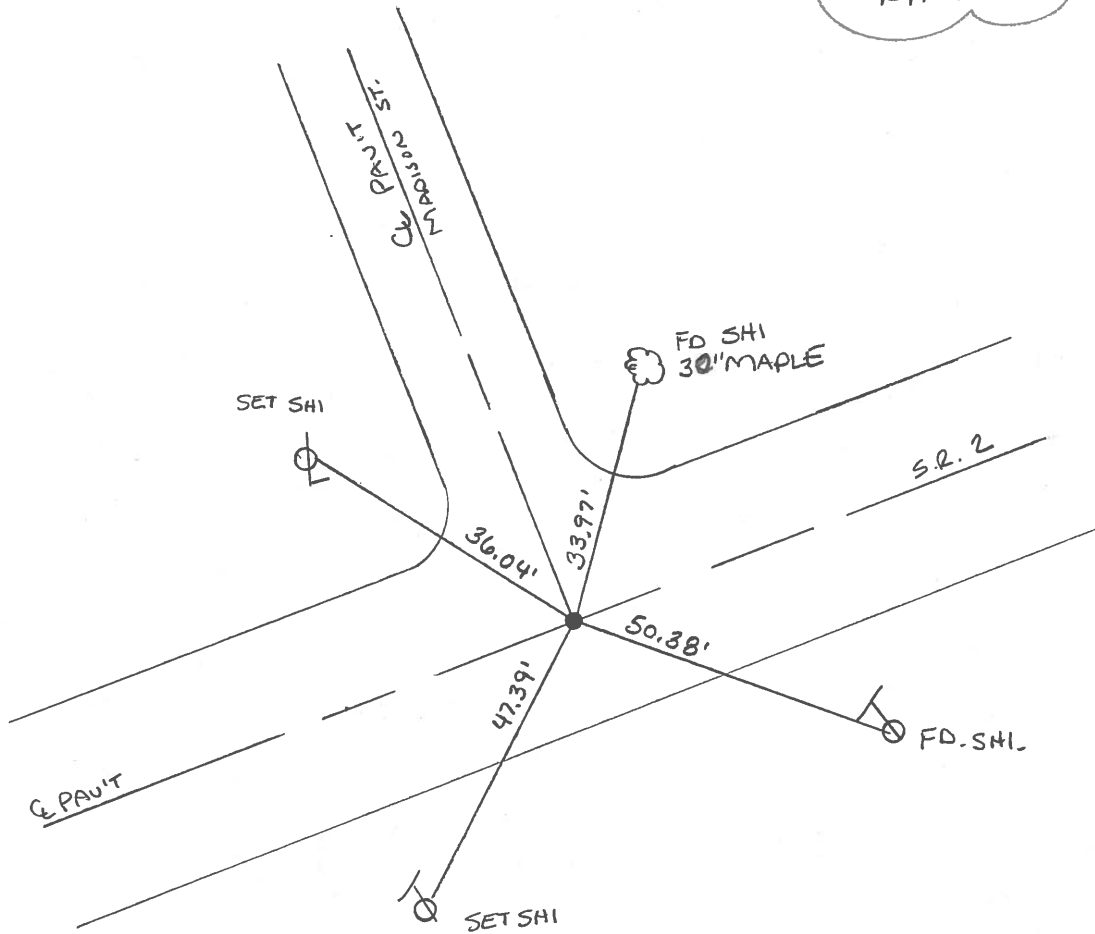
~~LEFT~~ - Q PAV'T. - ~~RIGHT~~ Q PAV'T

12.2 TO RT EDGE PAVEMENT

S.L.M. 739+78



SET PK & WASHER
 10-11-96
 KPM



O.D.O.T. DISTRICT 2 SURVEY OFFICE

PERSONNEL _____

REFERENCE NO. 34

SHEET 14 OF _____

NOTES 1. Stone

H.C. D. Curtis

R.C. J. Householder

DATE 26 April 89

WEATHER Cloudy

TEMP. 61°

ROUTE SR#2

COUNTY Fulton

TOWNSHIP Clinton

SECTION _____

T _____ R _____

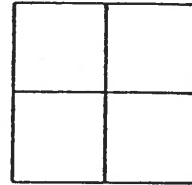
TYPE MONUMENT PK Nail

ON SURFACE - BELOW Surface

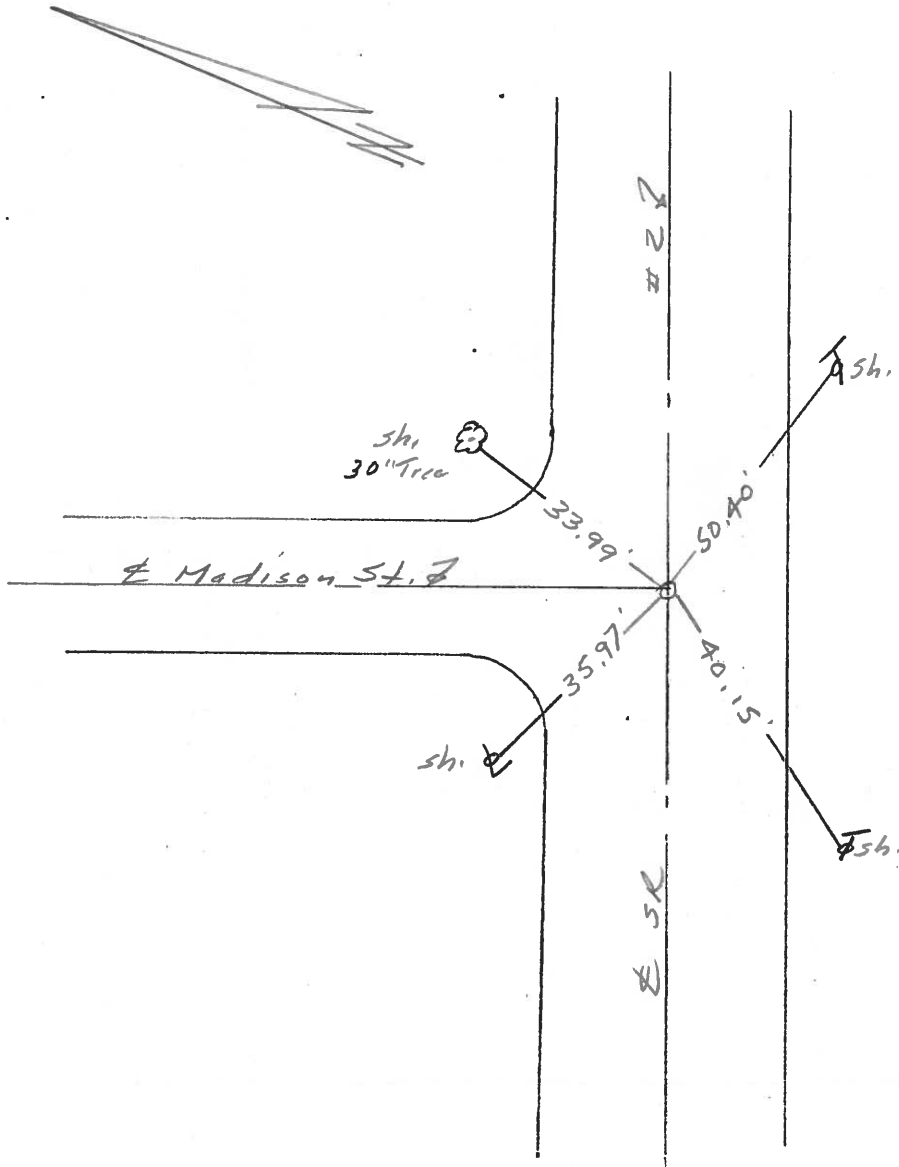
LEFT- & PAV'T. - RIGHT _____

_____ TO _____ EDGE PAVEMENT

S.L.M. 741+60



OK 5/30/89 123



PERSONNEL	TITLE	PERSONNEL	TITLE	COUNTY	DATE	WEATHER	TEMP.
Stone				Fulton	22 Aug 77	Cloudy	62°
¶				S. R. #2			
Crowd				SEC. Wausau			

DESCRIPTION _____ LEFT _____ CENTER LINE _____ RIGHT _____ JOB NO. _____

