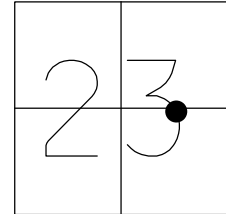


O.D.O.T. DISTRICT 2 SURVEY OFFICE (USE ONLY)

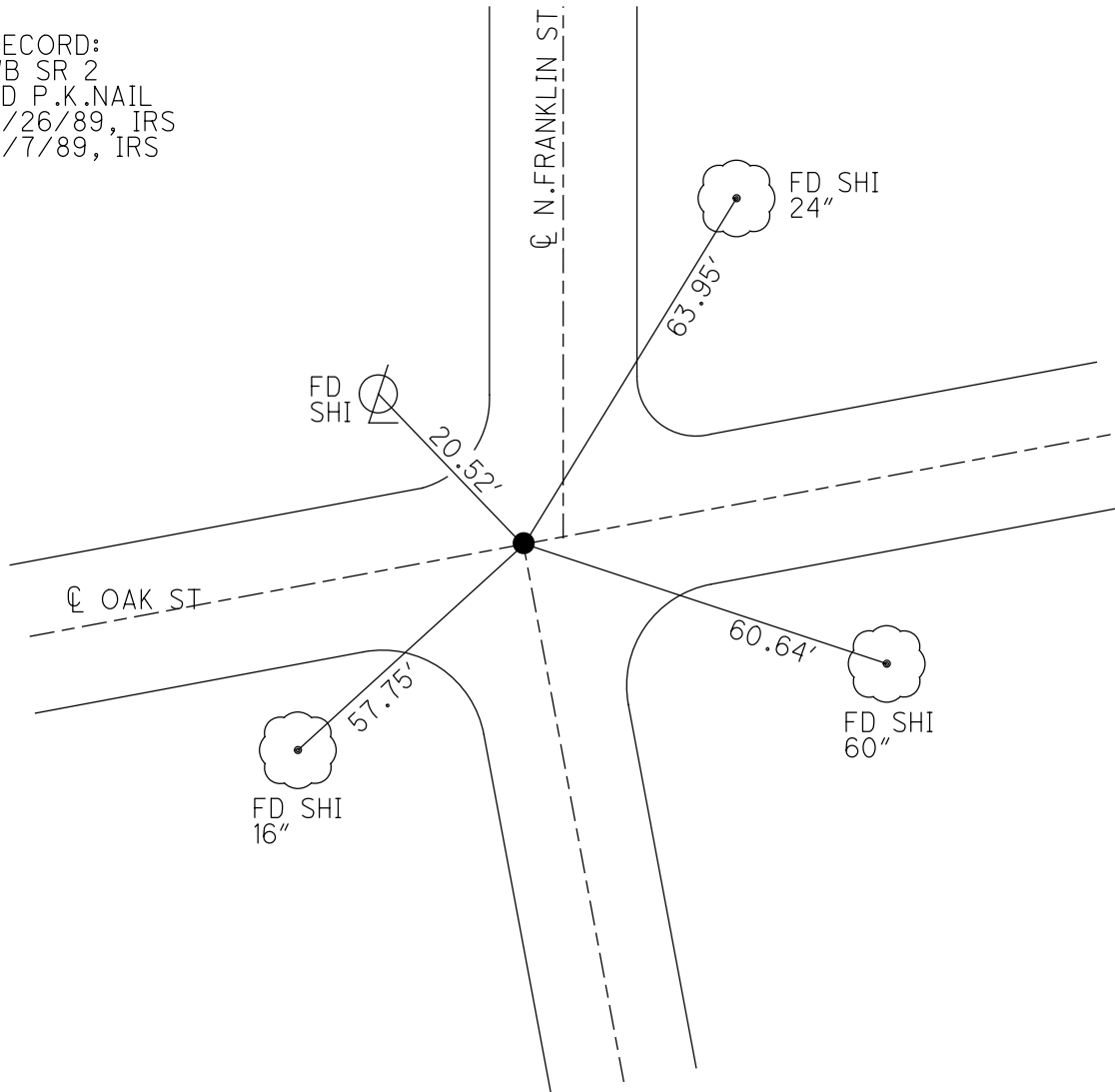
PERSONNEL _____ REFERENCE NO. 35 SHEET 16 OF 16
 NOTES STONE DATE 4/26/89 ROUTE SR 2
 H.C. CURTIS WEATHER CLOUDY COUNTY FULTON
 R.C. HOUSEHOLDER TEMP. 62° TOWNSHIP CLINTON
 _____ SECTION 23
 _____ T 7 N R 6 E

TYPE MONUMENT P.K.NAIL
 ON SURFACE - ~~BELOW~~ ON
 LEFT - ☉ PAV'T - RIGHT ON
 _____ TO _____ EDGE PAVEMENT
 S.L.M. _____



Grid: Northing: _____ Easting: _____

RECORD:
 WB SR 2
 FD P.K.NAIL
 4/26/89, IRS
 6/7/89, IRS



O.D.O.T. DISTRICT 2 SURVEY OFFICE

PERSONNEL _____

REFERENCE NO. 35

SHEET 15 OF _____

NOTES 1. Stone

H.C. DeLuca

R.C. J. Hauschilder

DATE 26 April 89

WEATHER Cloudy

TEMP. 62°

ROUTE SR# 2

COUNTY Fulton

TOWNSHIP Clinton

SECTION _____

T. _____ R. _____

TYPE MONUMENT PK Nail

ON SURFACE - BELOW Surface

LEFT - & PAV'T. - RIGHT _____

TO _____ EDGE PAVEMENT

S.L.M. _____

