

FED. RD. DIST. NO.	STATE	PROJECT	FISCAL YEAR	1
10	OHIO		1944	22

STATE OF OHIO DEPARTMENT OF HIGHWAYS

BRYAN - WEST UNITY ROAD S.H. 307 SEC. F (Pt.) TOLEDO - ANGOLA ROAD S.H. 21, SEC. ALVORDTON (Pt.) R, S-1, FAYETTE (Pt.) K-2 WILLIAMS AND FULTON COUNTIES VILLAGES OF ALVORDTON AND FAYETTE MILL CREEK AND GORHAM TOWNSHIPS

WILLIAMS & FULTON COUNTIES
S.H. 21, SEC. ALVORDTON (Pt.) R,
S-1, FAYETTE (Pt.) K-2
S.H. 307 SEC. F (Pt.)

CONVENTIONAL SIGNS

COUNTY LINE	-----
TOWNSHIP LINE	-----
SECTION LINE	-----
CORPORATION LINE	-----
PROPERTY LINE	-----
FENCE LINE	-----
CENTER LINE	-----
STEAM RAILROAD	-----
POLE LINE	-----
HEDGE	-----
DRAIN PIPE (NEW)	-----
DRAIN PIPE (OLD)	-----
GUARD RAIL	-----

INDEX OF SHEETS

TITLE SHEET	1
TYPICAL SECTION	2-3
PLAN & PROFILE	4-16
CROSS SECTIONS	17-20
GENERAL NOTES, SUMMARIES	21
SUMMARY OF QUANTITIES	22

LINE DATA

S.H. 307
Begin Sec. F (Pt.) Sta. 0+00
End Sec. F (Pt.) Sta. 13+15.57
Gross Length = Net Length Sec. F (Pt.) = 1315.57 Lin. Ft.

S.H. 21
Begin Project and Sec. Alvordton (Pt.) Sta. 0-50
End Sec. Alvordton (Pt.) Sta. 26+21.4
Gross Length Sec. Alvordton (Pt.) = 2671.4 Lin. Ft.
Deductions for Railroads:-
Sta. 25+52 to Sta. 25+61.6 = 9.6 Lin. Ft.
Sta. 25+86 to Sta. 25+95 = 9.0 Lin. Ft.
Total Deductions = 18.6 Lin. Ft.

Net Length Sec. Alvordton (Pt.) = 2652.8 Lin. Ft.
Begin Sec. R ~ Sta. 26+21.4
End Sec. R ~ Sta. 105+05 = Sta. 0+00 Sec. "S-1"

Gross Length of Sec. R = 7883.6 Lin. Ft.
Deduction for Railroad Sta. 28+04.3 to Sta. 28+46 = 41.7 Lin. Ft.
Net Length of Sec. R = 7841.9 Lin. Ft.
Begin Sec. "S-1" ~ Sta. 0+00
End Sec. "S-1" ~ Sta. 134+00

Gross Length Sec. "S-1" = Net Length = 13400 Lin. Ft.
Begin Sec. "K-2" ~ Sta. 239+00 = Sta. 238+78.8 Fayette (Pt.)
End Project and Sec. K-2 ~ Sta. 299+26.45

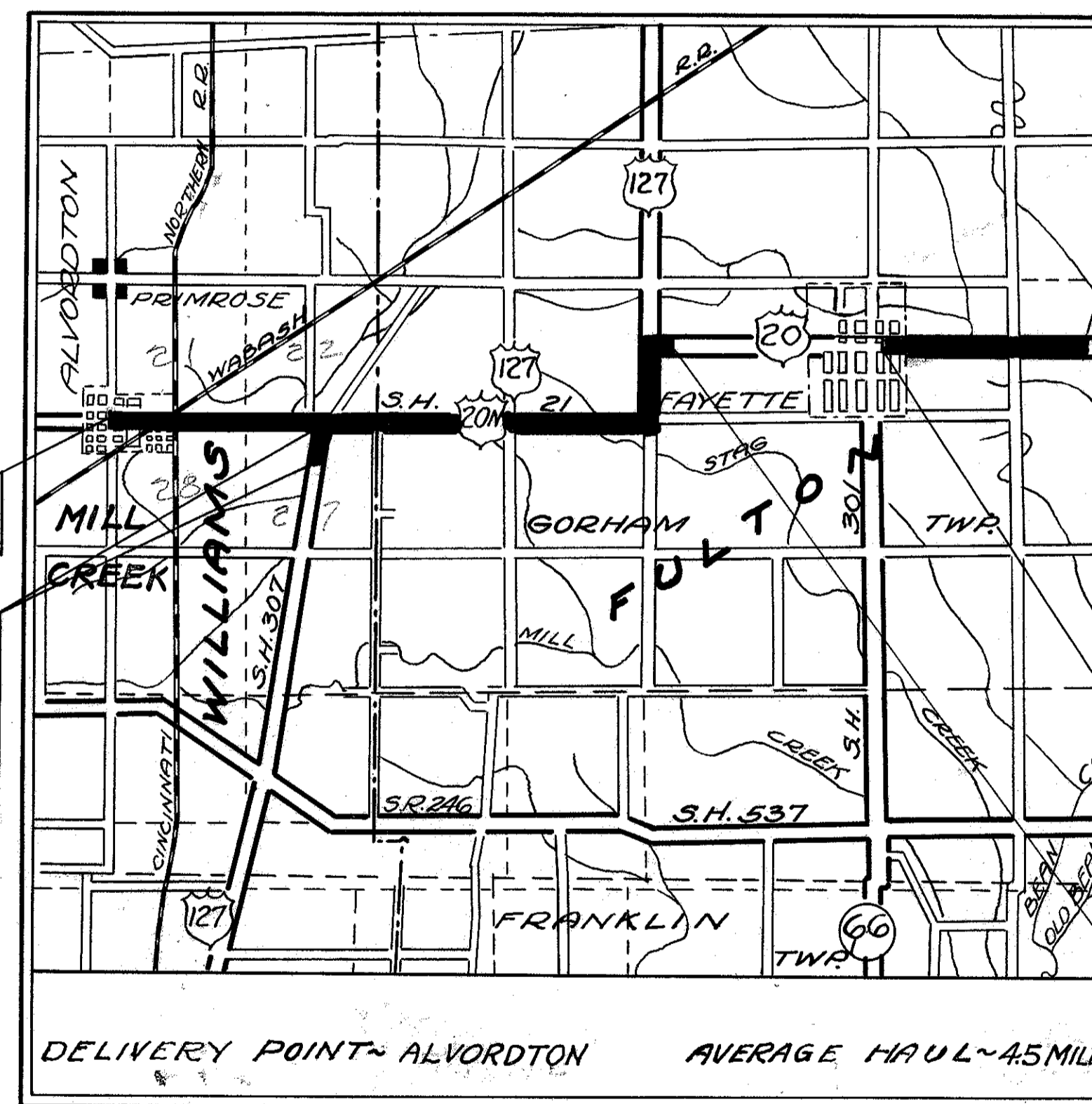
Gross Length Sec. K-2 = Net Length = 6026.45 Lin. Ft.
Net Length Rural Sections = 23,583.92 Lin. Ft. or 5.4136 Miles
Begin Sec. Fayette (Pt.) Sta. 222+21
End Sec. Fayette (Pt.) Sta. 238+78.8 = 1657.8 Lin. Ft. or 0.313 Miles

Net Length of Municipal = 4310.6 Lin. Ft. or 0.8164 Miles
Net Length of Work, 32,894.52 Lin. Ft. or 6.230 Miles

Begin Project
Sta. 0-50

Begin Work
S.H. 307
Sec. F (Pt.)
Sta. 0+00

End Work
S.H. 307
Sec. F (Pt.)
Sta. 13+15.57



LOCATION PLAN
Scale 1 inch = 1 Mile

PORTION TO BE IMPROVED
STATE HIGHWAYS
OTHER ROADS

SCALES

PLAN	1" = 100' & 50'
PROFILE, HORIZONTAL	1" = 100' & 50'
PROFILE, VERTICAL	1" = 5'
CROSS SECTIONS	1" = 5'

End Project
Sta. 299+26.45

Begin Work
Sta. 222+21

End Work
Sta. 134+00

The Standard Specifications of the State of Ohio Department of Highways, including changes and Supplemental Specifications listed in the proposal shall govern this improvement.

I hereby approve these plans and declare that the making of this improvement will not require the closing to traffic of the highway and that provisions for the maintenance and safety of traffic will be as set forth on the plans and estimates.

The right of way necessary for this improvement will be provided by the State of Ohio.

Approved: _____
Date: _____ Resident Division Deputy Director

Approved: _____
Date: _____ Chief Engineer Bureau of Maintenance

Approved: _____
Date: _____ Chief Engineer Bureau of Bridges & R.R. Crossings

Approved: *Murray D. Shuff*
Date: 4-22-44 Chief Engineer Bureau of Location & Right of Way

Approved: *W. H. ...*
Date: 4-26-44 First Asst. Director & Chief Engineer

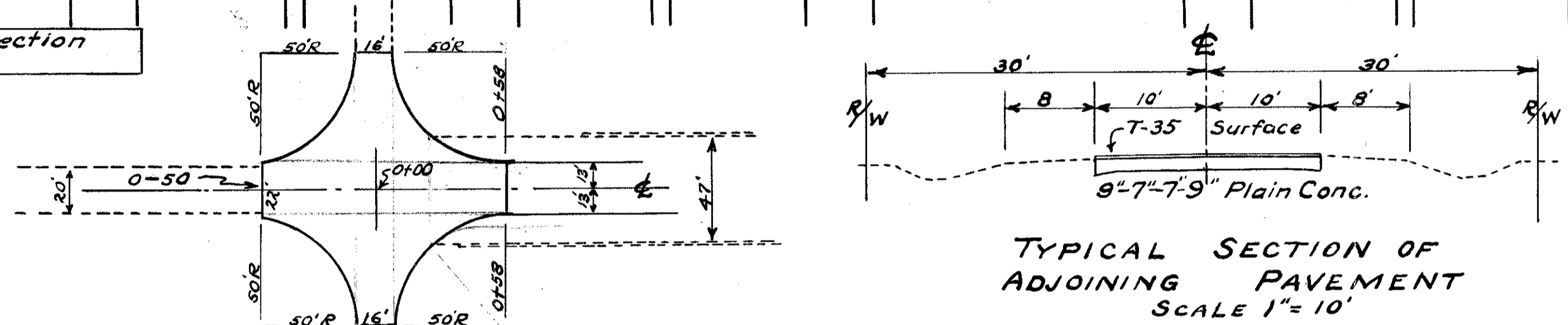
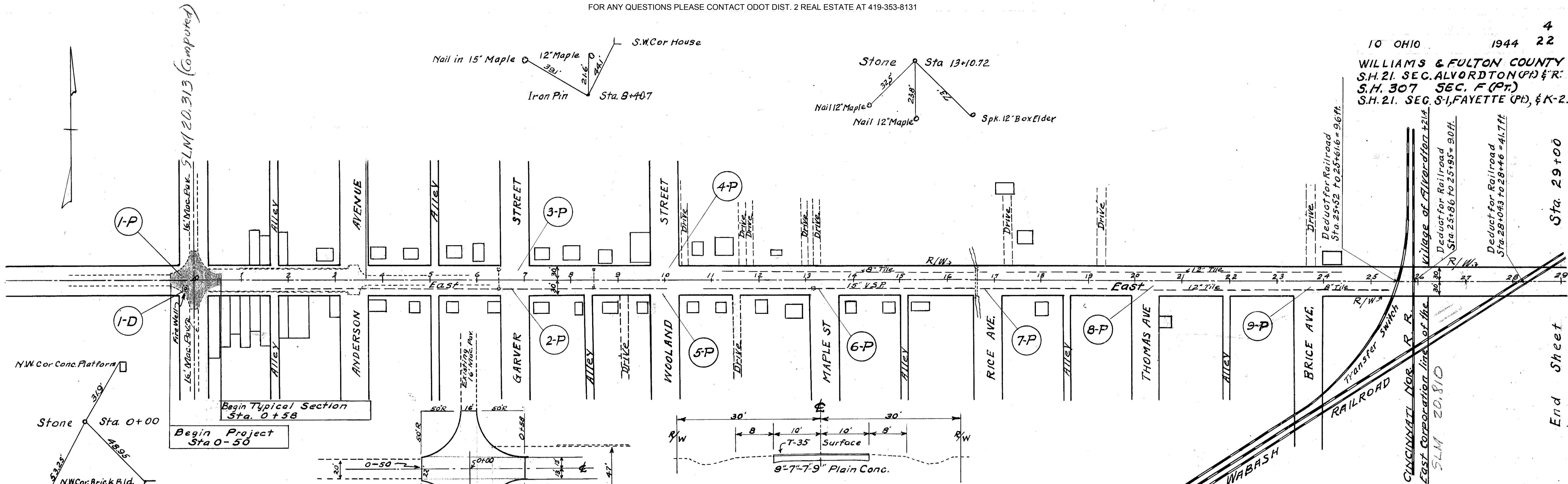
Approved: *F. J. ...*
Date: 4-26-44 Director of Highways.

STANDARD DRAWINGS	
G-7-07	6-1-42
I-1, 2, 3, 4 and 5	3-1-39
I-8 C.B. No. 6	12-15-41
I-12	7-1-42

SUPPLEMENTAL SPECIFICATIONS	
I-117	Jan. 15 1944
S-122	4-15-37

FILE NO. WILLIAMS & FULTON COUNTIES
S.H. 21, SEC. ALVORDTON (Pt.) R, S-1, FAYETTE (Pt.) K-2
S.H. 307, SEC. F (Pt.)
STATE OF OHIO
DATE OF LETTING
CONTRACT NO.

CONSTRUCTION BUREAU
JUN 21 1955
GROUND PHOTO LAB



BM. Spike in 20" Maple
 25' Right Sta. 0+25
 Elevation 861.67

BM. @ S.W. Cor. Gas Pump Foundation
 30' Left Sta. 12+25
 Elevation 855.95

BM. N.W. Cor. Signal Tower Foundation
 97' Right Sta. 26+11
 Elevation 849.59

APPROACH 1-P Scale 1"=50'
 Note: See Typical Section Sheet No. 2.

ROADWAY DRAINAGE 'D'					
Ref. No.	Station		Side	T-8 Adjust Man Hole Top to grade Each	Remarks
	From	To			
I-D	0-19		Rt.	1	Standard Man Hole Cover on Fire Well
Total Municipal				1	

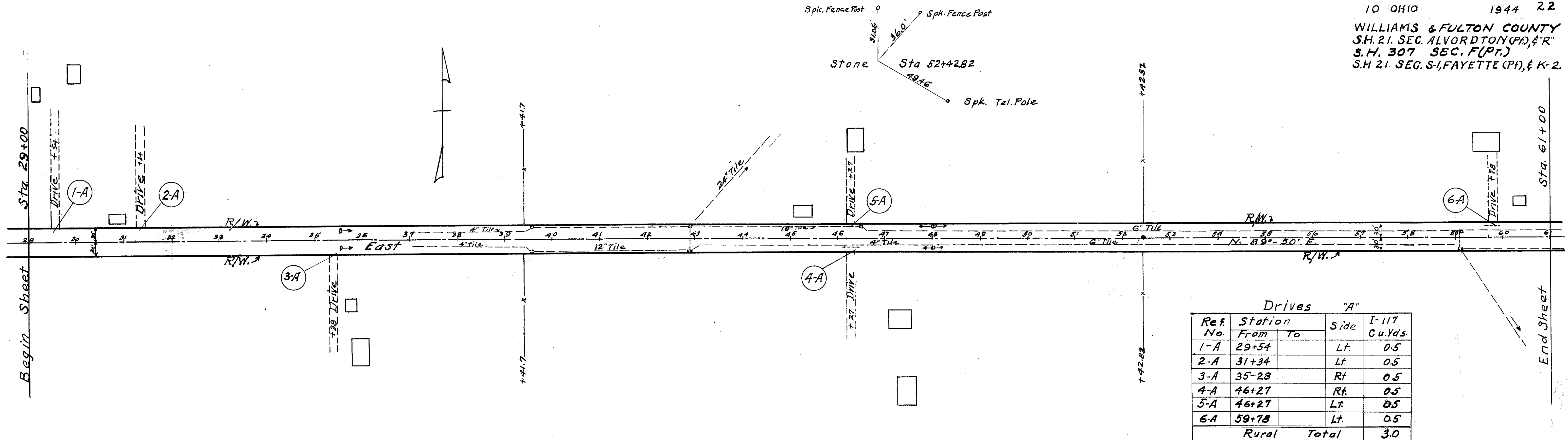
Ref No	Station		Side	Extra Pavement 'P'			
	From	To		T-35 1/2" Surface Course Sp. Yds.	T-35 1/2" Minimum Leveling Course Sp. Yds.	T-30 Prime Coat Sp. Yds.	I-117 Cu. Yds.
1-P	0-50	0+58		683.3	683.3	683.3	
2-P	6+80		Rt.				0.5
3-P	6+80		Lt.				0.5
4-P	9+95		Rt.				0.5
5-P	9+95		Lt.				0.5
6-P	13+26		Rt.				0.5
7-P	16+84		Rt.				0.5
8-P	20+20		Rt.				0.5
9-P	23+65		Rt.				0.5
Municipal Total				683.3	683.3	683.3	4.0

865
860
855
850
845

861.39 860.09 859.09 858.69 858.59 858.49 858.39 858.29 858.19 858.09 857.91 857.15 855.84 854.44 853.04 851.64 850.77 849.74 849.24 848.74 848.24 847.74 847.24 847.74 847.74 847.74 848.25 848.37 848.50 848.62

0 1 2 3 4 5 6 7 8 9 10 11 12 13 14 15 16 17 18 19 20 21 22 23 24 25 26 27 28

10 OHIO 1944 5
2.2
WILLIAMS & FULTON COUNTY
S.H. 21. SEC. ALVORDTON (PH), & R.
S.H. 307 SEC. F (PT.)
S.H. 21. SEC. S-1, FAYETTE (PH), & K-2.



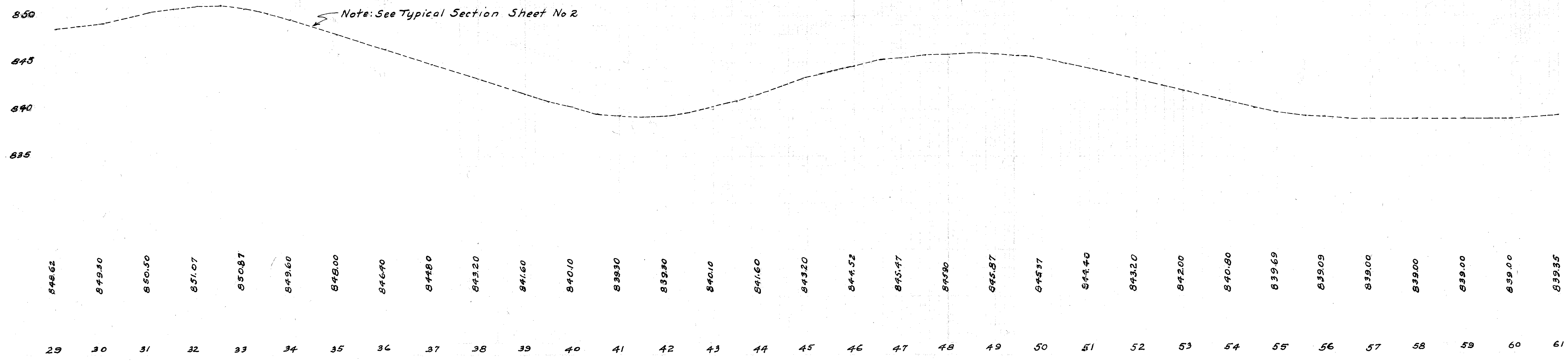
Drives "A"

Ref No.	Station From	To	Side	I-117 Cu.Yds.
1-A	29+54		Lt.	0.5
2-A	31+34		Lt.	0.5
3-A	35-28		Rt.	0.5
4-A	46+27		Rt.	0.5
5-A	46+27		Lt.	0.5
6-A	59+78		Lt.	0.5
Rural Total				3.0

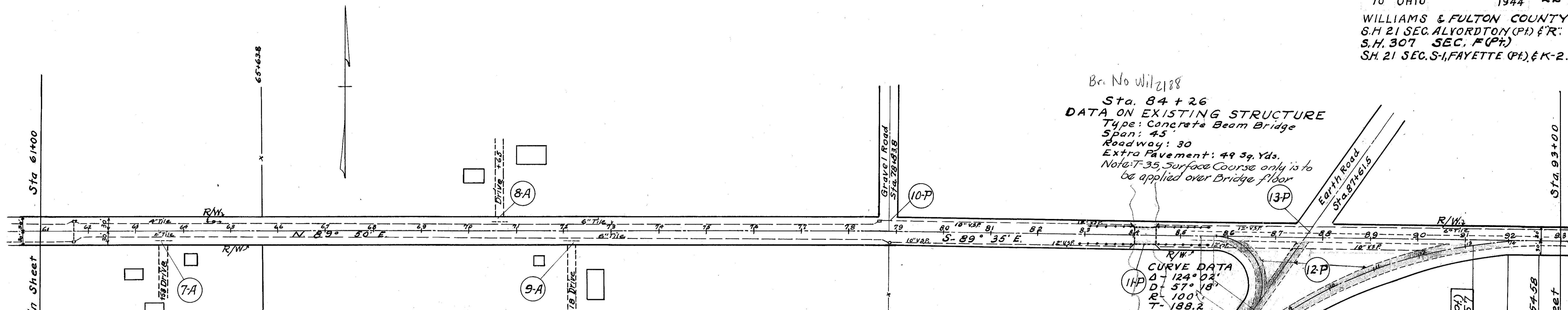
B.M. Spike Power Pole.
27' Left Sta. 31.95
Elevation 850.86

B.M. Spike 16" Maple.
28' Right Sta. 47+69
Elevation 846.00

B.M. Spike 24" Maple.
25' Left Sta. 59+74
Elevation 839.88



10 OHIO 1944 6
22
WILLIAMS & FULTON COUNTY
S.H. 21 SEC. ALYORDTON (Pt) & R.
S.H. 307 SEC. F (Pt)
S.H. 21 SEC. S-I, FAYETTE (Pt) & K-2.



Br. No. Wil 2188
Sta. 84 + 26
DATA ON EXISTING STRUCTURE
Type: Concrete Beam Bridge
Span: 45'
Roadway: 30'
Extra Pavement: 49 Sq. Yds.
Note: T-35 Surface Course only is to be applied over Bridge floor

CURVE DATA
Δ - 124° 02'
D - 57° 18'
R - 100'
T - 188.2'
L - 216.47'

CURVE DATA
Δ - 81° 14'
D - 6° 00'
R - 954.93'
T - 818.96'
L - 1353.9' Max. Superelevation = 183'
Note: No additional Superelevation required.

Extra Pavement "P"

Ref. No.	Station From	Station To	Side	T-35 1 1/4" Surface Course Sq. Yds.	B-35 1/2" Minimum Leveling Course Sq. Yds.	T-30 Prime Coat Sq. Yds.	I-117 Cu. Yds.
10-P	78+84		Lt.				0.5
11-P	84+26		Bridge	49.0		49.0	
12-P	86+80	92+55	Rt.	4209.7	4209.7	4209.7	
13-P	87+61		Lt.				0.5
Rural Total				4258.7	4209.7	4258.7	1.0

Drives "A"

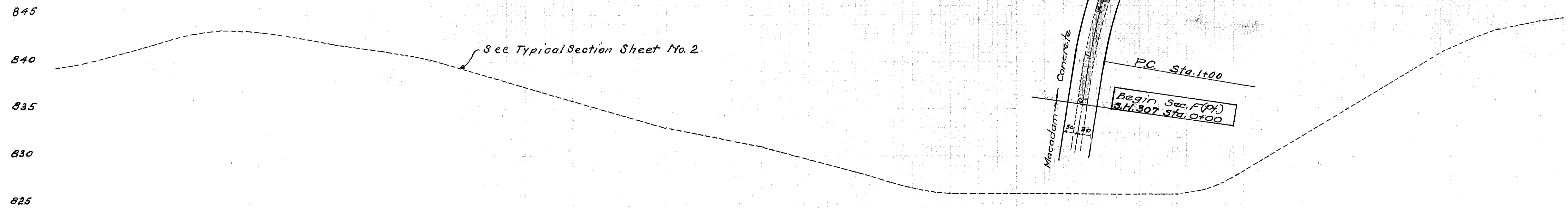
Ref. No.	Station From	Station To	Side	I-117 Cu. Yds.
7-A	63+58		Rt.	0.5
8-A	70+65		Lt.	0.5
9-A	72+18		Rt.	0.5
Rural Total				1.5

BM. Spike 10" Box Elder
27' Right Sta. 63+82
Elevation 844.77

BM. Spike 24" Box Elder
62' Left Sta. 69+80
Elevation 841.19

BM. Spike 30" Maple
24' Right Sta. 79+92
Elevation 825.62

BM. @ NEast Cor. S. Bridge Curb
15' Right Sta. 84+41
Elevation 826.38



839.35	840.40	841.80	843.00	843.36	842.70	841.90	841.10	840.22	838.84	837.38	835.92	834.46	833.00	832.00	831.00	829.60	828.20	826.89	826.13	826.00	826.00	826.00	826.00	826.00	826.00	827.81	830.80	833.88	836.80	839.90	842.30	843.80	844.66
61	62	63	64	65	66	67	68	69	70	71	72	73	74	75	76	77	78	79	80	81	82	83	84	85	86	87	88	89	90	91	92	93	

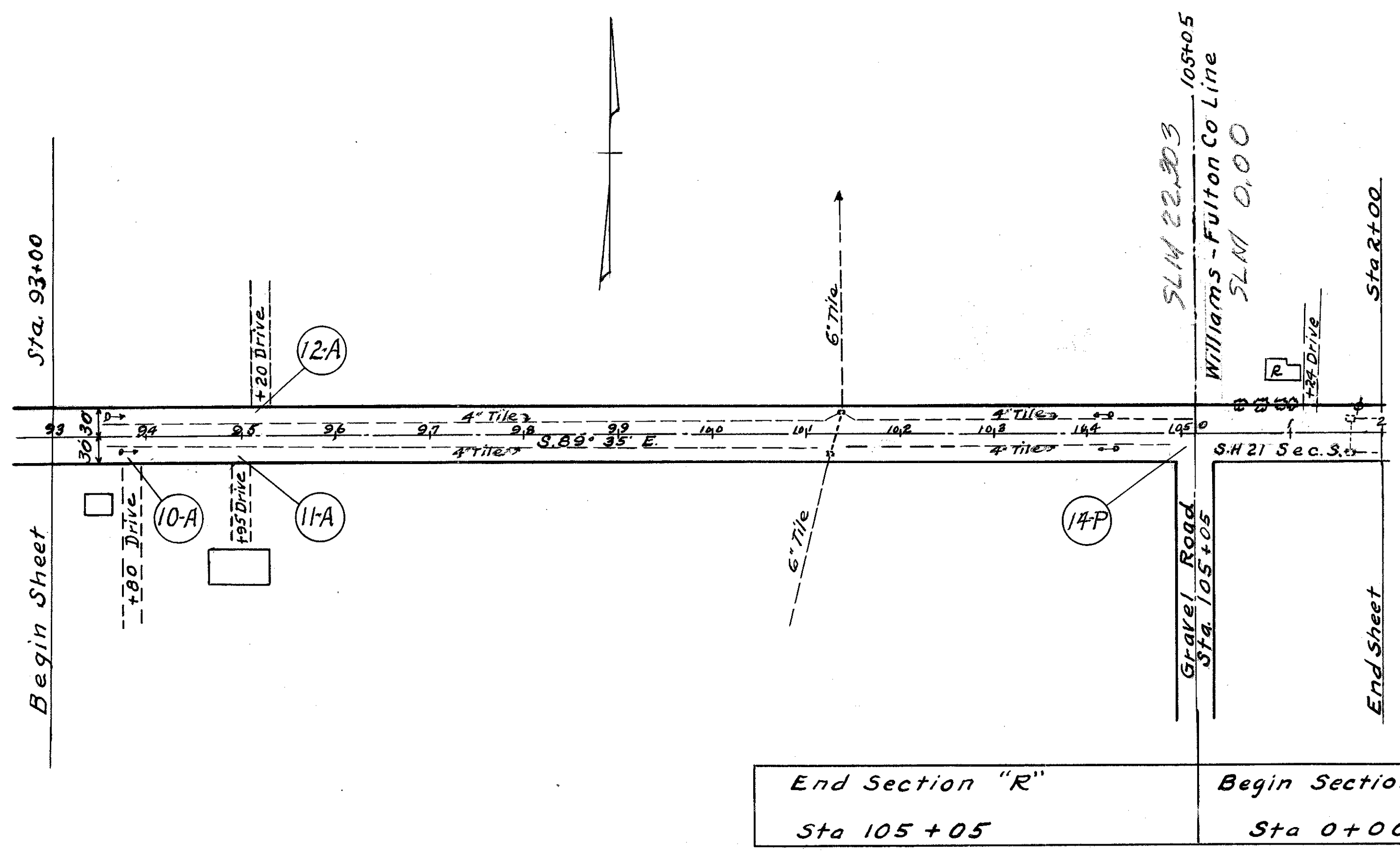
10 OHIO 1944 ⁷/₂₂
 WILLIAMS & FULTON COUNTY
 S.H. 21. SEC. ALVORDTON (Pt.) & "R".
 S.H. 307. SEC. F (Pt.)
 S.H. 21. SEC. S-1, FAYETTE (Pt.) & K-2.

Extra Pavement "P"

Ref. No.	Station From	To	Side	I-117 Cu. Yds.
14-P	105+05		Rt.	0.5
Rural Total				0.5

Drives "A"

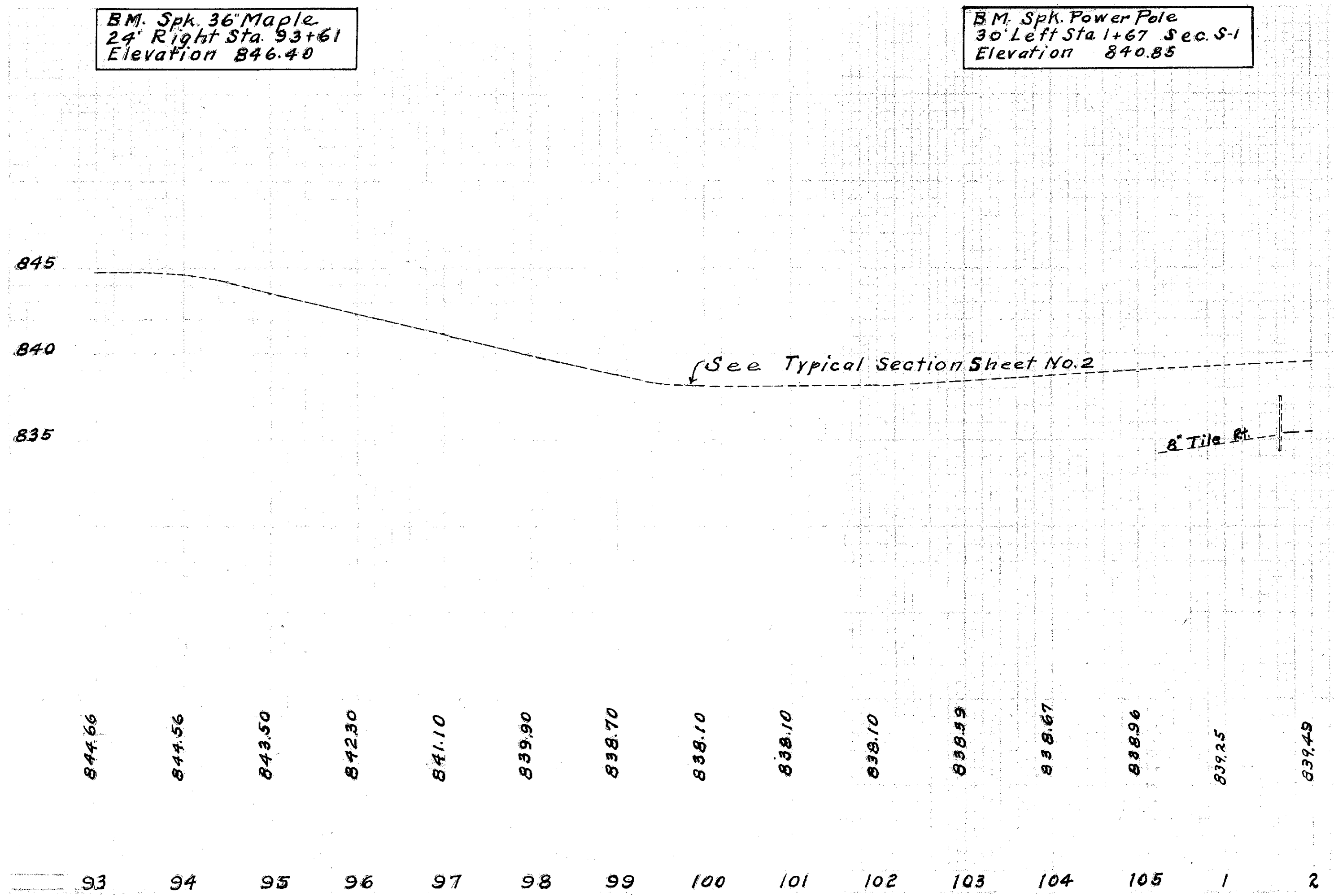
Ref. No.	Station From	To	Side	I-117 Cu. Yds.
10-A	93+80		Rt.	0.5
11-A	94+95		Rt.	0.5
12-A	95+20		Lt.	0.5
Rural Total				1.5



End Section "R" Sta 105 + 05	Begin Section "S-1" Sta 0 + 00
---------------------------------	-----------------------------------

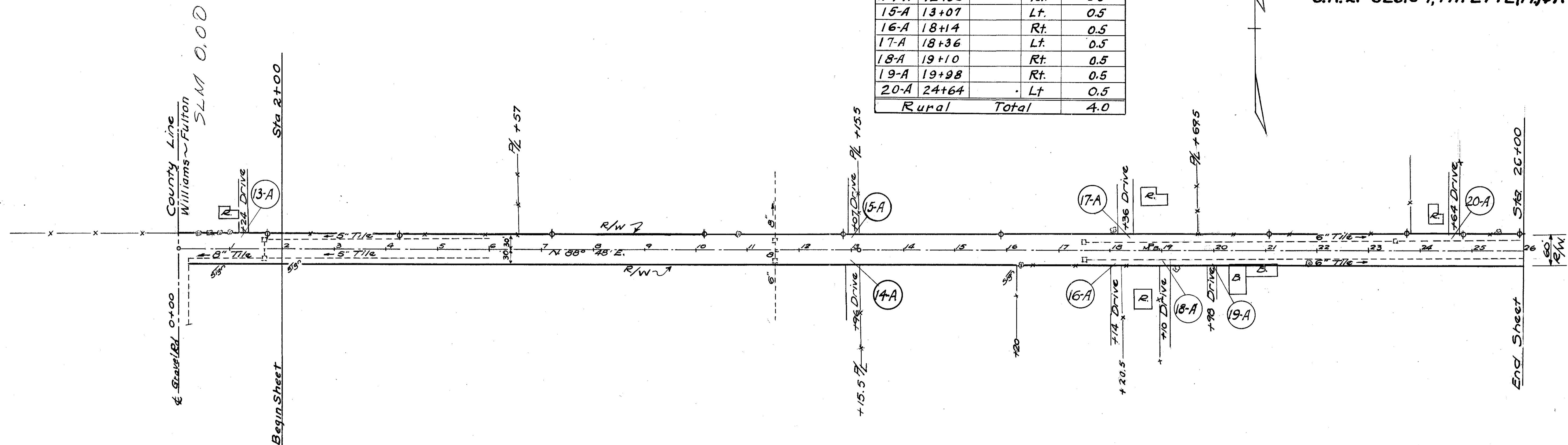
B.M. Spk. 36" Maple
 24' Right Sta. 93+61
 Elevation 846.40

B.M. Spk. Power Pole
 30' Left Sta. 1+67 Sec. S-1
 Elevation 840.85



WILLIAMS & FULTON COUNTY
 S.H. 21 SEC. ALVORDTON (Pt) & R
 S.H. 307 SEC. F (Pt.)
 S.H. 21 SEC. S-1, FAYETTE (Pt) & K-2

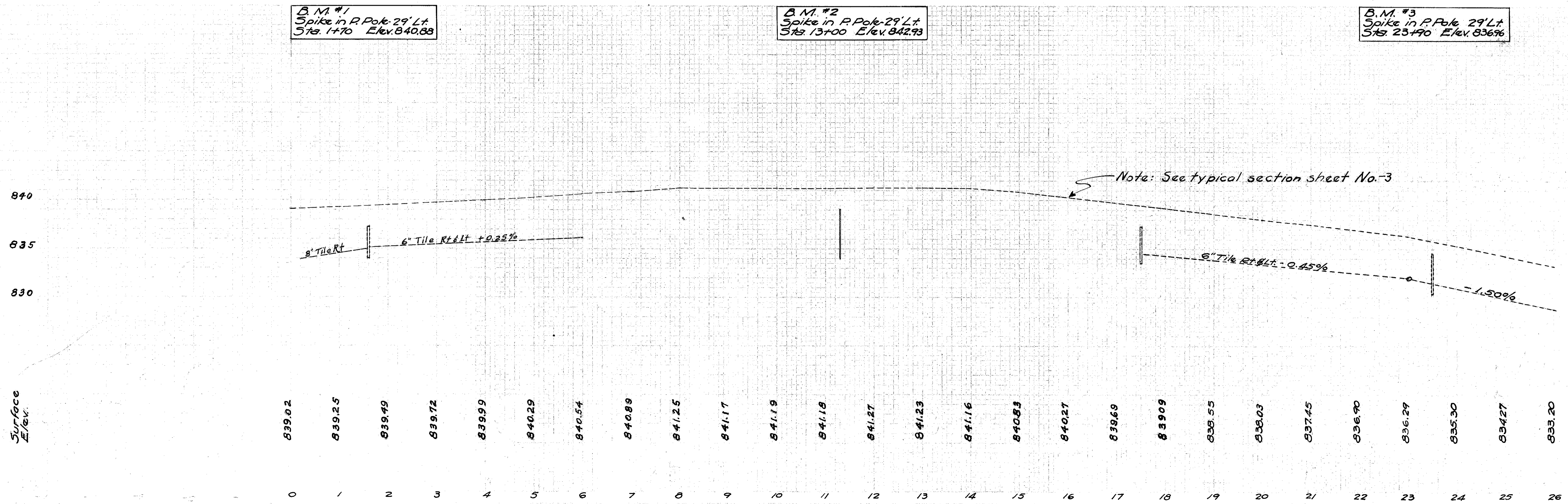
Drives "A"				
Ref No	Station From	To	Side	I-117 Cu. Yds.
13-A	1+24		Lt.	0.5
14-A	12+96		Rt.	0.5
15-A	13+07		Lt.	0.5
16-A	18+14		Rt.	0.5
17-A	18+36		Lt.	0.5
18-A	19+10		Rt.	0.5
19-A	19+98		Rt.	0.5
20-A	24+64		Lt.	0.5
Rural			Total	4.0



B.M. #1
 Spike in R Pole 29' Lt.
 Sta. 1+70 Elev. 840.88

B.M. #2
 Spike in R Pole 29' Lt.
 Sta. 13+00 Elev. 842.93

B.M. #3
 Spike in R Pole 29' Lt.
 Sta. 23+90 Elev. 836.96



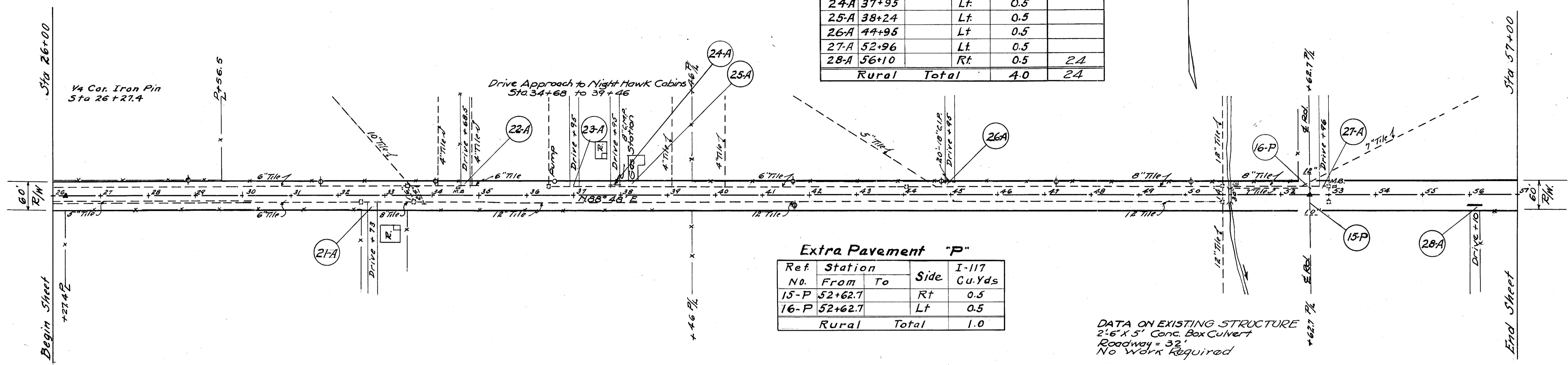
10 OHIO 1944 22
 WILLIAMS & FULTON COUNTY
 S.H. 21, SEC. ALVORDTON (Pt.) #R
 S.H. 307 SEC. F (Pt.)
 S.H. 21, SEC. S1, FAYETTE (Pt.) #K-2

Drives "A"

Ref. No	Station		Side	I-117 Cu. Yds.	I-1 1/2" Pipe for Drive Lin. Ft.
	From	To			
21-A	32+73		Rt.	0.5	
22-A	34+68.5		Lt.	0.5	
23-A	36+95		Lt.	0.5	
24-A	37+95		Lt.	0.5	
25-A	38+24		Lt.	0.5	
26-A	44+95		Lt.	0.5	
27-A	52+96		Lt.	0.5	
28-A	56+10		Rt.	0.5	24
Rural Total				4.0	24

Extra Pavement "P"

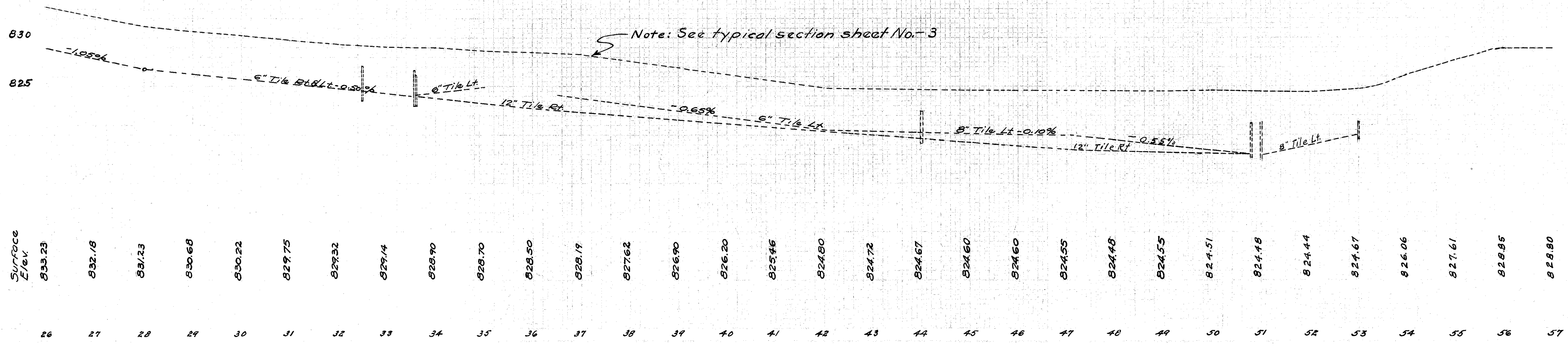
Ref. No.	Station		Side	I-117 Cu. Yds.
	From	To		
15-P	52+62.7		Rt.	0.5
16-P	52+62.7		Lt.	0.5
Rural Total				1.0



B.M. #4
 Spike in P. Pole 29' Lt.
 Sta. 34+00 Elev. 830.29

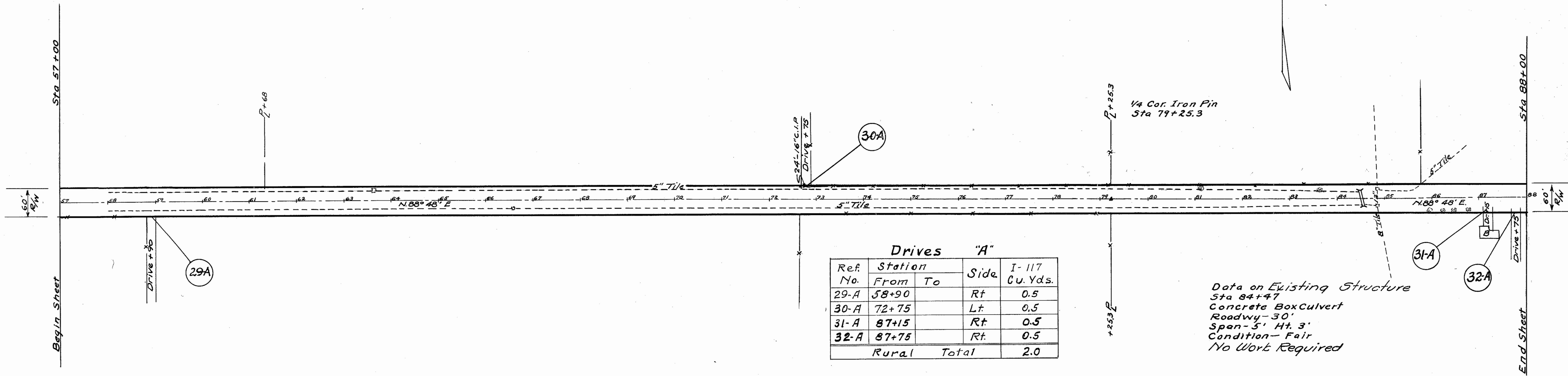
B.M. #5
 Spike in T. Pole 29' Rt.
 Sta. 44+80 Elev. 823.82

B.M. #6
 Spike in T. Pole 29' Rt.
 Sta. 56+06 Elev. 829.21



Note: See typical section sheet No. 3

10 OHIO 1944 22
 WILLIAMS & FULTON COUNTY
 S.H. 21, SEC. 2, ALYDTON (Pt.) # R
 S.H. 307 SEC. F (Pt.)
 S.H. 21, SEC. S-1, FAYETTE (Pt.) # K-2



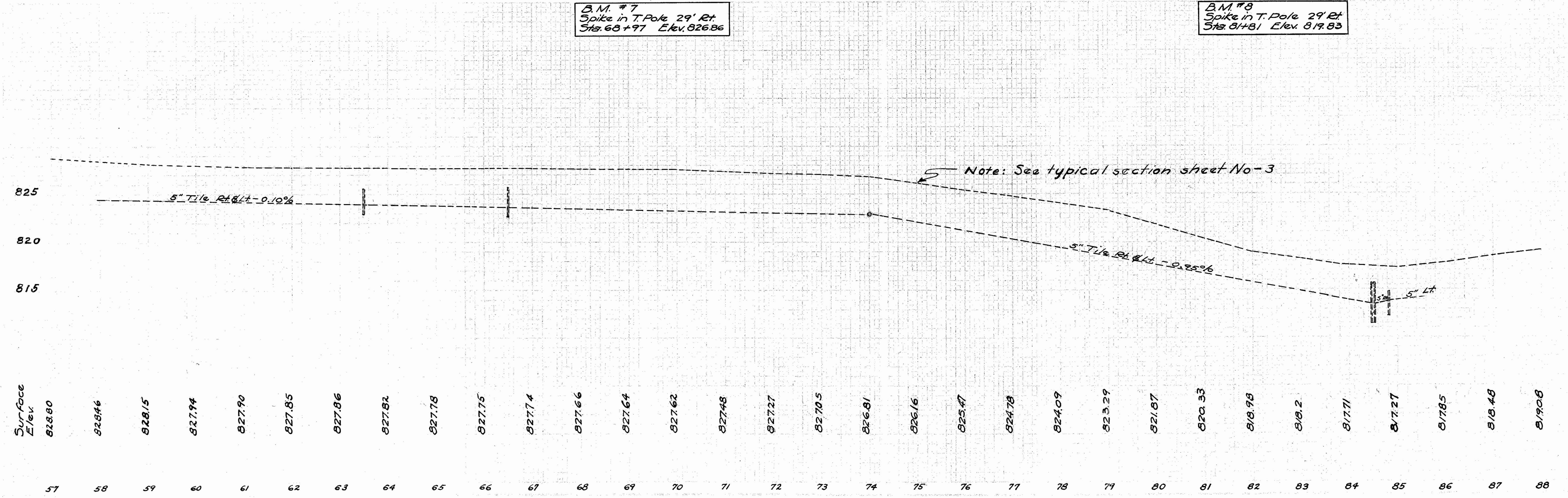
Drives "A"

Ref. No.	Station From	To	Side	I-117 Cu. Yds.
29-A	58+90		Rt	0.5
30-A	72+75		Lt	0.5
31-A	87+15		Rt	0.5
32-A	87+75		Rt	0.5
Rural Total				2.0

Data on Existing Structure
 Sta 84+47
 Concrete Box Culvert
 Roadwy - 30'
 Span - 5' Ht. 3'
 Condition - Fair
 No Work Required

B.M. #7
 Spike in T. Pole 29' Rt.
 Sta. 68+97 Elev. 826.86

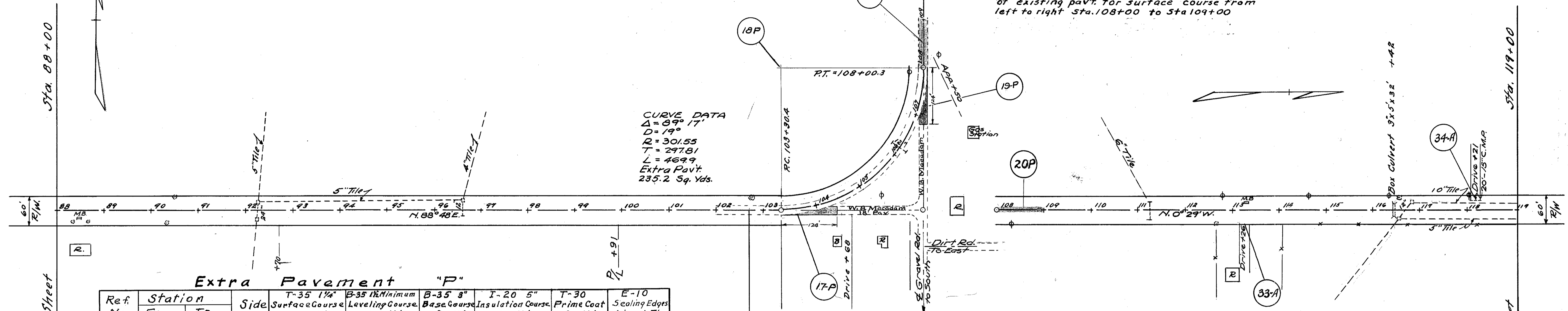
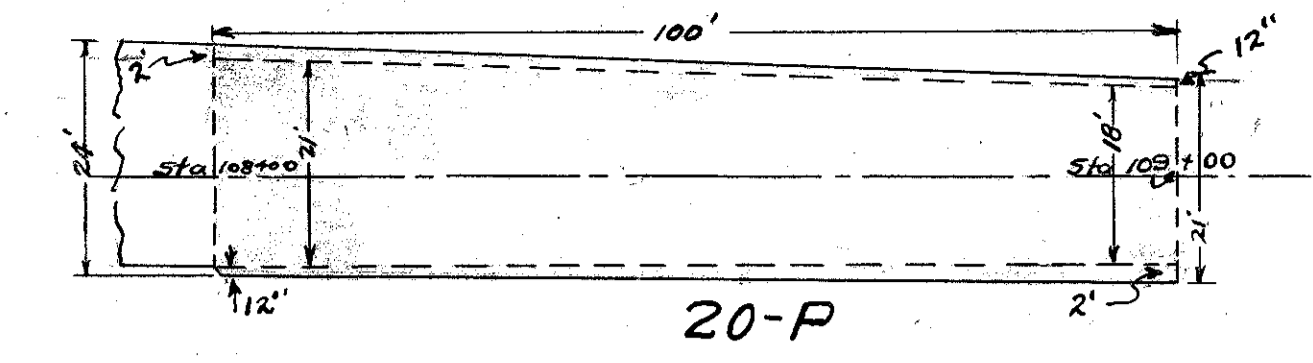
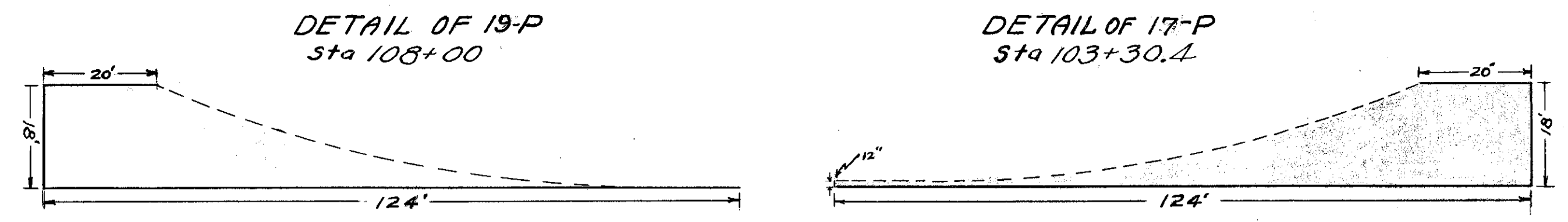
B.M. #8
 Spike in T. Pole 29' Rt.
 Sta. 81+81 Elev. 819.83



Note: See typical section sheet No-3

Station	Surface Elev.
57	818.80
58	828.46
59	828.15
60	827.94
61	827.90
62	827.85
63	827.86
64	827.82
65	827.78
66	827.75
67	827.74
68	827.66
69	827.64
70	827.62
71	827.48
72	827.27
73	827.05
74	826.81
75	826.16
76	825.47
77	824.78
78	824.09
79	823.29
80	821.87
81	820.33
82	818.98
83	818.2
84	817.71
85	817.27
86	817.85
87	818.48
88	819.08

WILLIAMS & FULTON COUNTY
 S.H. 21, SEC. ALYORDTON (PA) # R
 S.H. 307 SEC. F (PT)
 S.H. 21, SEC. S-1, FAYETTE (PA) # K-2



CURVE DATA
 $\Delta = 89^\circ 17'$
 $D = 190'$
 $R = 301.55$
 $T = 297.81$
 $L = 469.9$
 Extra Pav't
 235.2 Sq. Yds.

Extra Pavement "P"

Ref. No.	Station From	Station To	Side	T-35 1 1/2" Surface Course Sq. Yds.	B-35 1/2" Minimum Leveling Course Sq. Yds.	B-35 3" Base Course Sq. Yds.	I-20 5" Insulation Course Sq. Yds.	T-30 Prime Coat Sq. Yds.	E-10 Sealing Edges Lineal Ft.
17-P	103+30	104+50	Rt.	144.0	122.0			144.0	
18-P	102+30.4	109+00.3	Lt.	235.2	235.2			235.2	
19-P	106+80	108+00.3	Rt.	149.8	127.3			149.8	
20-P	108+00	109+00	Transition	250.0	250.0	39.0	50.0	217.0	200.0
Rural Total				779.0	734.5	39.0	50.0	746.0	200.0

Drives "A"

Ref. No.	Station From	Station To	Side	I-117 Cu. Yds.
33-A	113+26		Rt.	0.5
34-A	118+21		Lt.	0.5
Rural Total				1.0

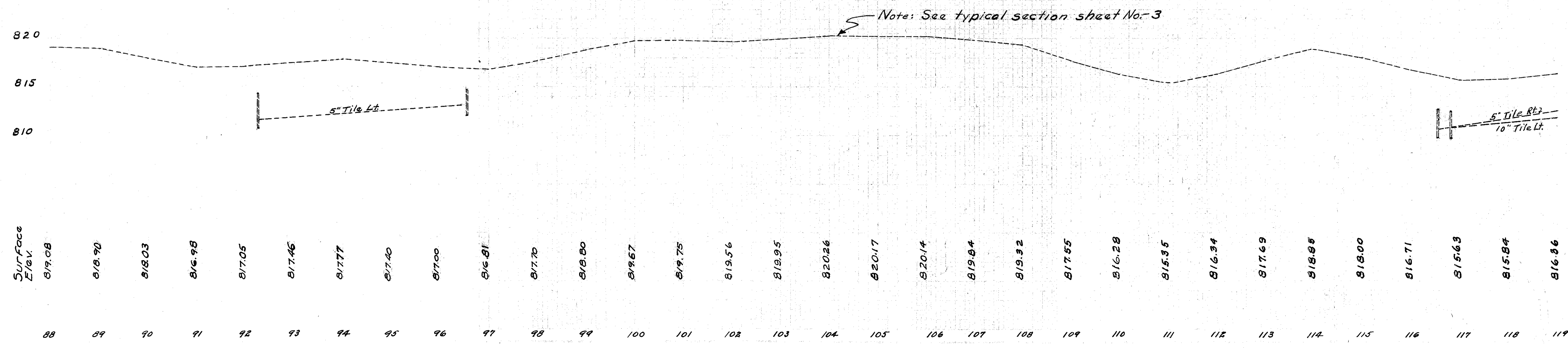
B.M. #9
 Spike in T. Pole 29' Rt.
 Sta. 92+90 Elev. 816.78

B.M. #10
 Spike in T. Pole 70' So.
 Sta. 105+00 Elev. 818.23

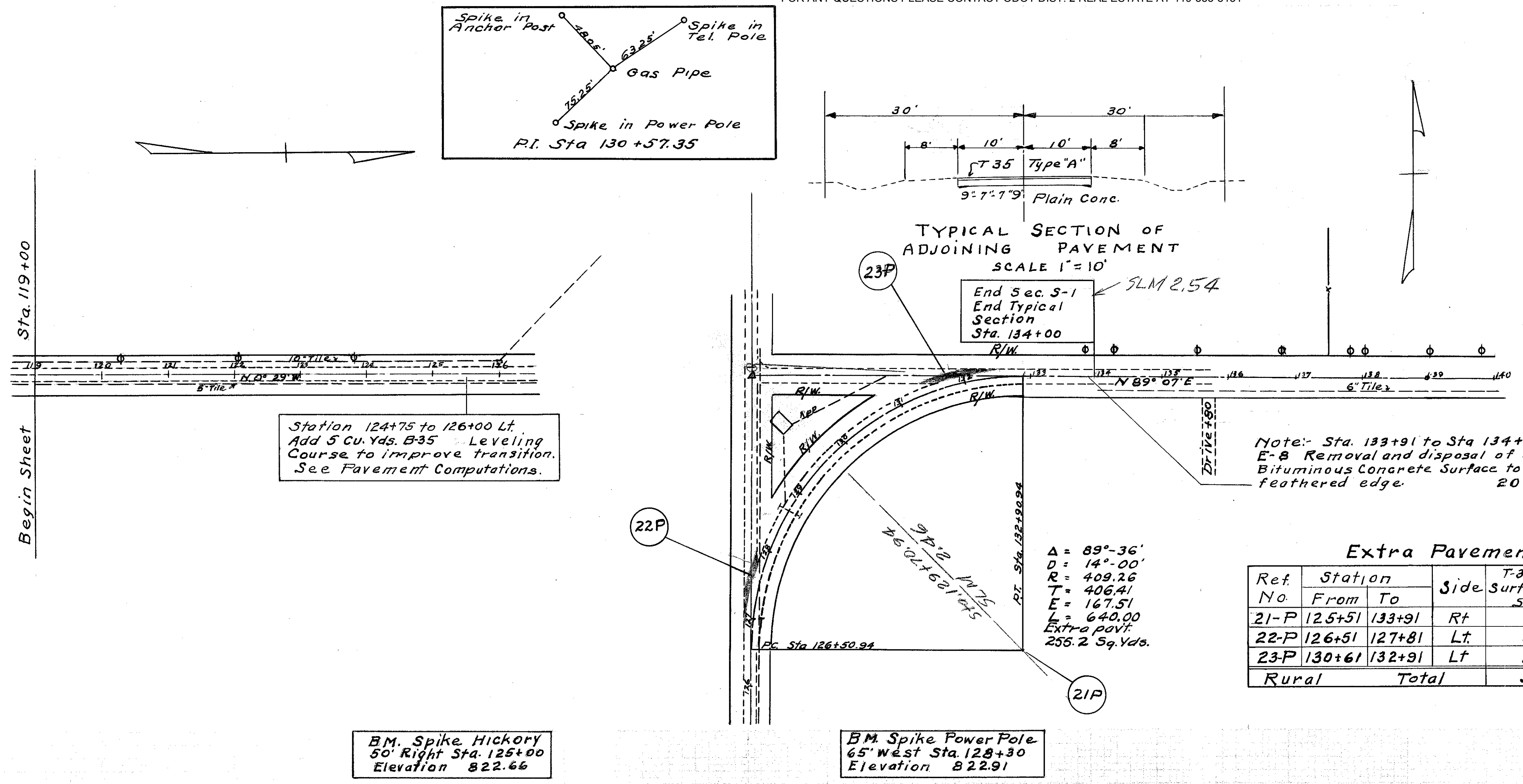
B.M. #11
 Sp. in P. Pole 29' Lt.
 Sta. 114+70 Elev. 819.90

Station 102+70 to 103+30 Rt.
 Add 5 Cu. Yds. B-35
 leveling course to
 improve transition at
 curve

Sec. Cor. Iron Pin
 Sta 106+28.2

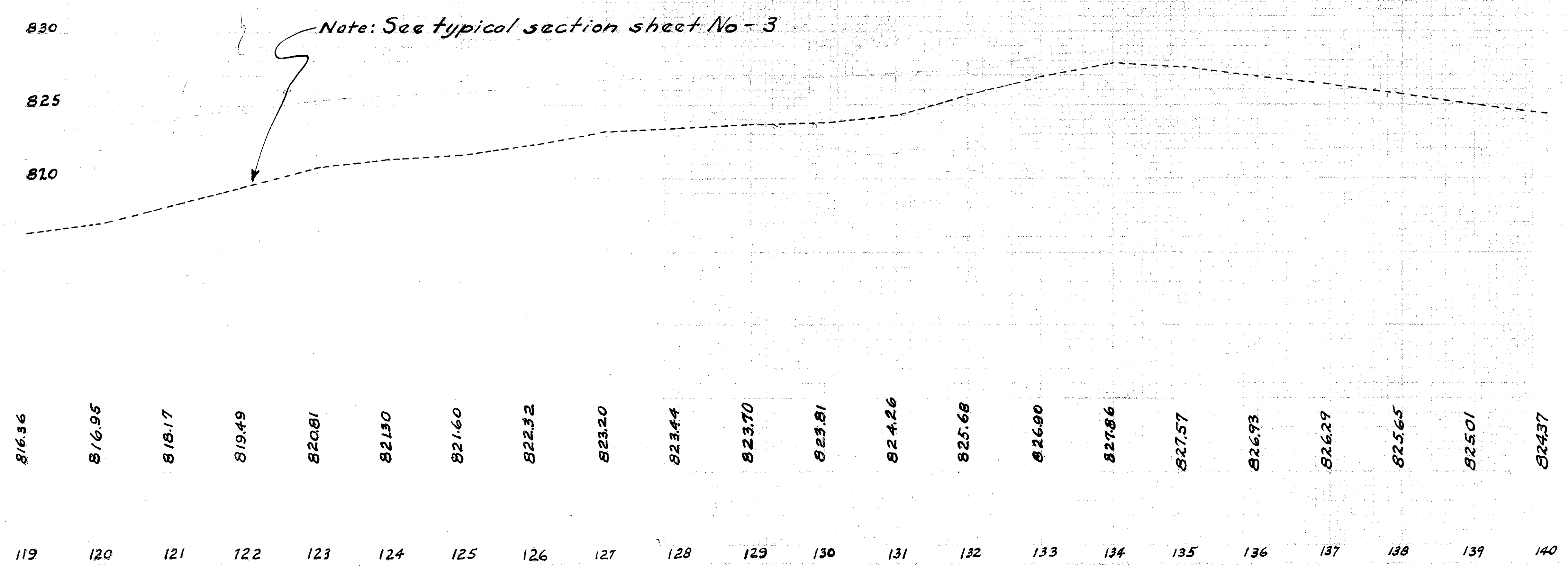


10 OHIO 12
1944 22
WILLIAMS & FULTON COUNTY
S.H. 21 SEC. ALVORDTON (Pt) & R
S.H. 307 SEC. F (Pt.)
S.H. 21 SEC. S-1, FAYETTE (Pt) & K-2



BM. Spike Hickory
50' Right Sta. 125+00
Elevation 822.66

BM. Spike Power Pole
65' west Sta. 128+30
Elevation 822.91

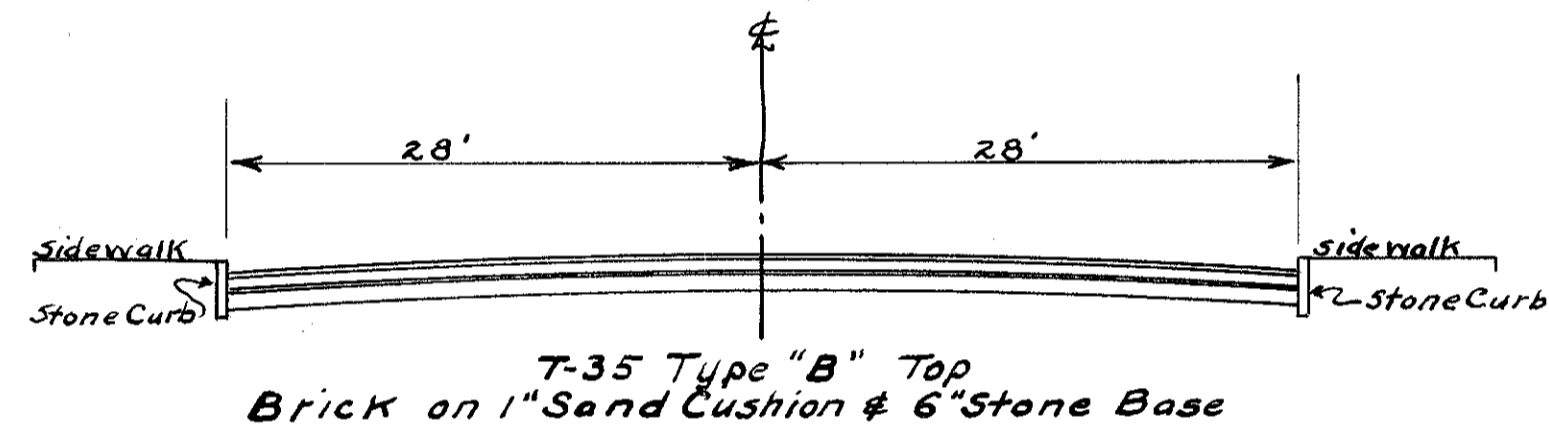


Drives "A"

Ref. No.	Station From	Station To	Side	T-35 1/4" Surface Course Sq. Yds.	T-30 Prime Coat Sq. Yds.	I-117 Gu. Yds.
35-A	225+32	226+32	Lt.	33.3	33.3	
36-A	225+50	226+22	Rt.	24.0	24.0	
37-A	226+69		Rt.	10.1	10.1	
38-A	230+10		Rt.	7.0	7.0	
39-A	230+40		Lt.	7.0	7.0	
40-A	230+76		Rt.	7.0	7.0	
41-A	231+48	232+55	Lt.	39.0	39.0	
42-A	232+19		Rt.	7.0	7.0	
43-A	232+85		Lt.	7.0	7.0	
44-A	233+70		Rt.	7.0	7.0	
45-A	234+20		Lt.	11.0	11.0	
46-A	233+78	234+93	Rt.			1.0
47-A	235+77		Lt.	7.0	7.0	
48-A	235+65	236+43	Rt.			0.5
49-A	236+93		Lt.	7.0	7.0	
50-A	237+19	237+75	Rt.			0.5
Municipal Total				173.4	173.4	2.0

See Sheet No. 14 for these items.

Note: A sufficient amount of extra leveling material (as set up in Pavement Computations, Sheet No. 22) shall be used to properly build up low spots in drives.

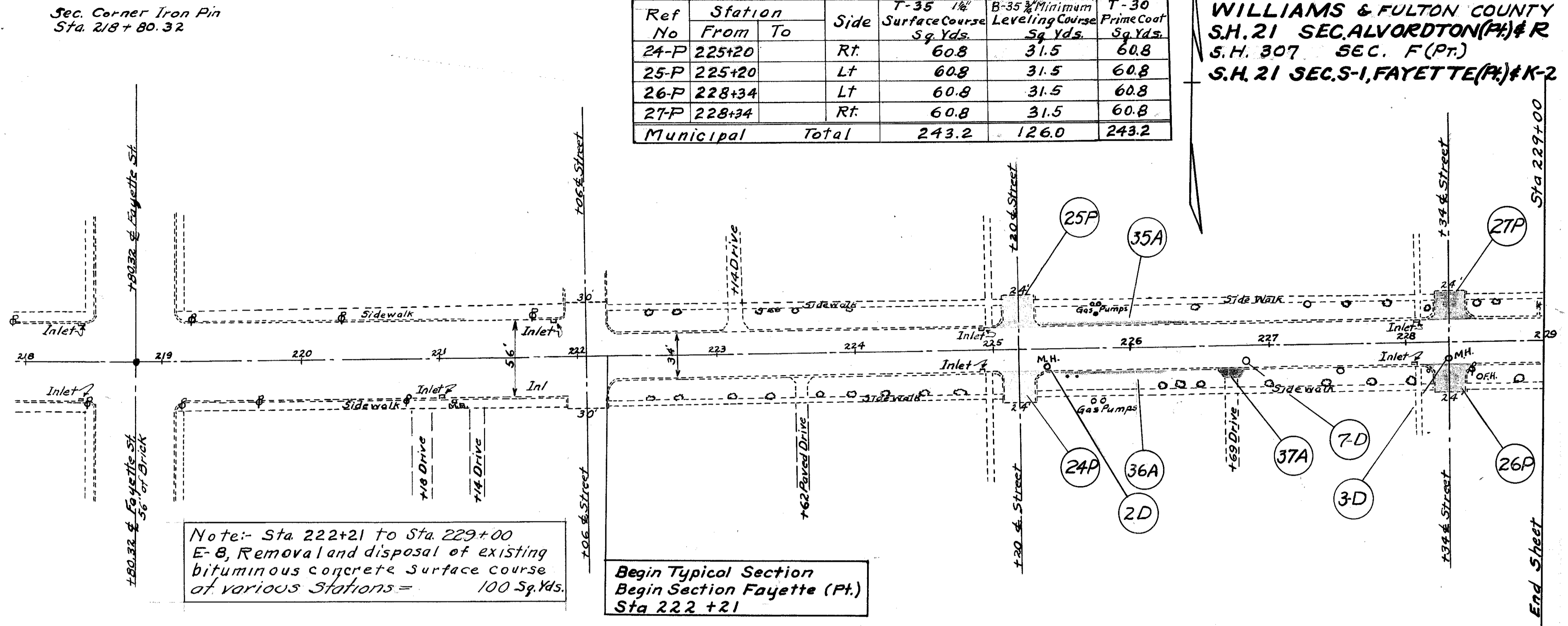


TYPICAL SECTION OF ADJOINING PAVEMENT
SCALE 1" = 10'

Extra Pavement "P"

Ref. No.	Station From	Station To	Side	T-35 1/4" Surface Course Sq. Yds.	B-35 3/4" Minimum Leveling Course Sq. Yds.	T-30 Prime Coat Sq. Yds.
24-P	225+20		Rt.	60.8	31.5	60.8
25-P	225+20		Lt.	60.8	31.5	60.8
26-P	228+34		Lt.	60.8	31.5	60.8
27-P	228+34		Rt.	60.8	31.5	60.8
Municipal Total				243.2	126.0	243.2

WILLIAMS & FULTON COUNTY
S.H. 21 SEC. ALVORDTON (Pt.) # R
S.H. 307 SEC. F (Pt.)
S.H. 21 SEC. S-I, FAYETTE (Pt.) # K-2

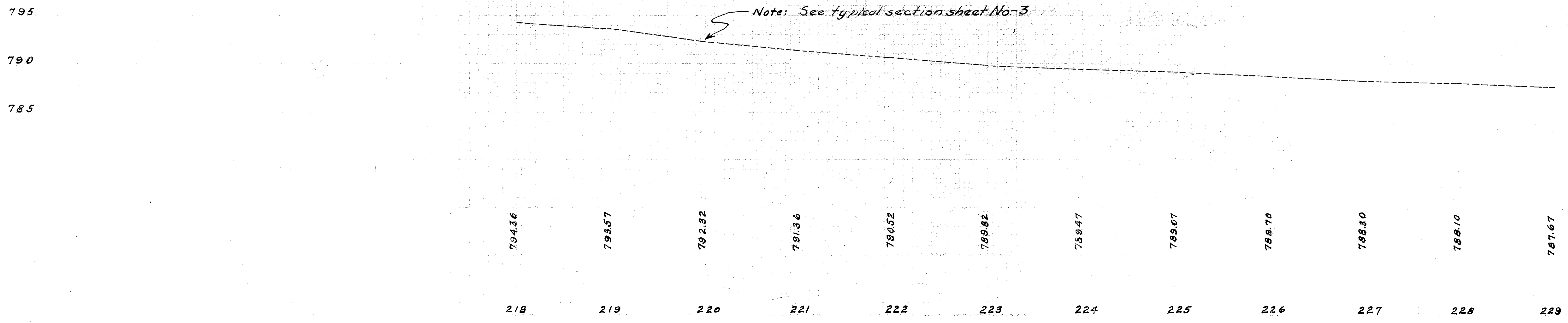


Note: Sta 222+21 to Sta 229+00 E-B, Removal and disposal of existing bituminous concrete surface course of various Stations = 100 Sq. Yds.

Begin Typical Section
Begin Section Fayette (Pt.)
Sta 222 + 21

B.M. @ on NW Cor. Lamp Post Base
29' Right Sta. 221+85
Elevation 790.60

Ref. No.	Station	Side	T-8 Adjust Man Hole Tops to Grade Each	Remarks
2-D	225+40	Rt.	1	
3-D	228+34	Rt.	1	
7-D	226+85	Rt.	1	
Municipal Total			3	



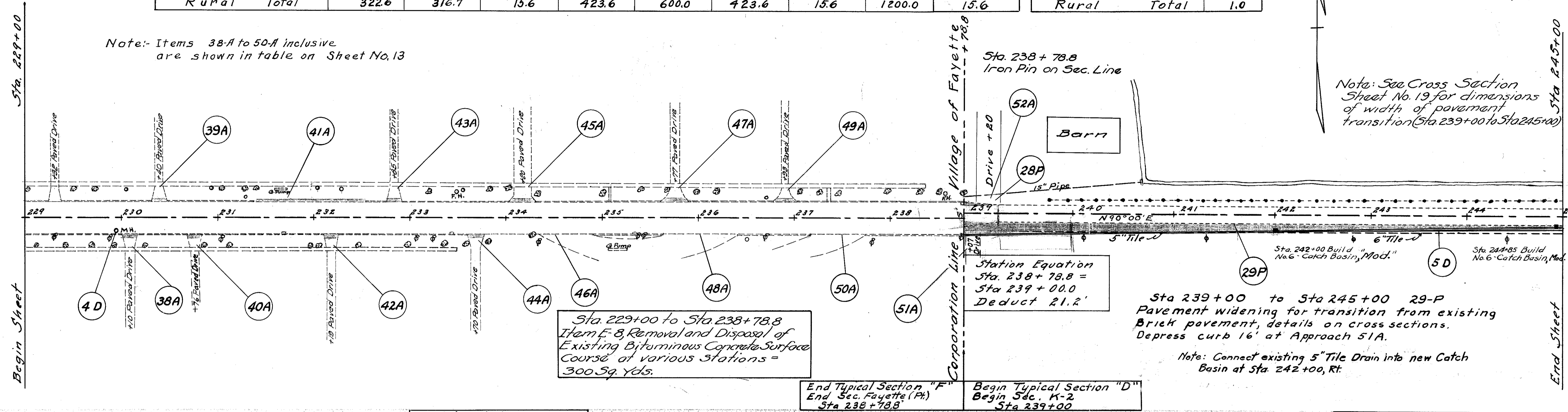
Extra Pavement "P"												
Ref. No.	Station		Side	T-35 1/4" Surface Course Sq. Yds.	B-35 1/2" Minimum Leveling Course Sq. Yds.	B-35 1" Minimum Leveling Course Sq. Yds.	B-35 3" Base Course Sq. Yds.	I-12 Type 2" Curb & Gutter Lineal Ft.	I-20 Insulation Course Sq. Yds.	T-30 Prime Coat Sq. Yds.	E-10 Sealing Edges Lineal Ft.	B-35 1/2" Leveling Course Sq. Yds.
28-P	239+00	239+35	Lt.	5.9		5.9				5.9		5.9
29-P	239+00	245+00	Rt.	316.7	316.7	9.7	423.6	600.0	423.6	9.7	1200.0	9.7
	Rural	Total		322.6	316.7	15.6	423.6	600.0	423.6	15.6	1200.0	15.6

Drives "A"				
Ref. No.	Station		Side	I-117 Cu. Yds.
51-A	239+07		Rt.	0.5
52-A	239+20		Lt.	0.5
	Rural	Total		1.0

WILLIAMS & FULTON COUNTY
S.H. 21 SEC. ALVORDTON (Pt) # R
S.H. 307 SEC. F (Pt)
S.H. 21, SEC. S-1, FAYETTE (Pt) # K-2

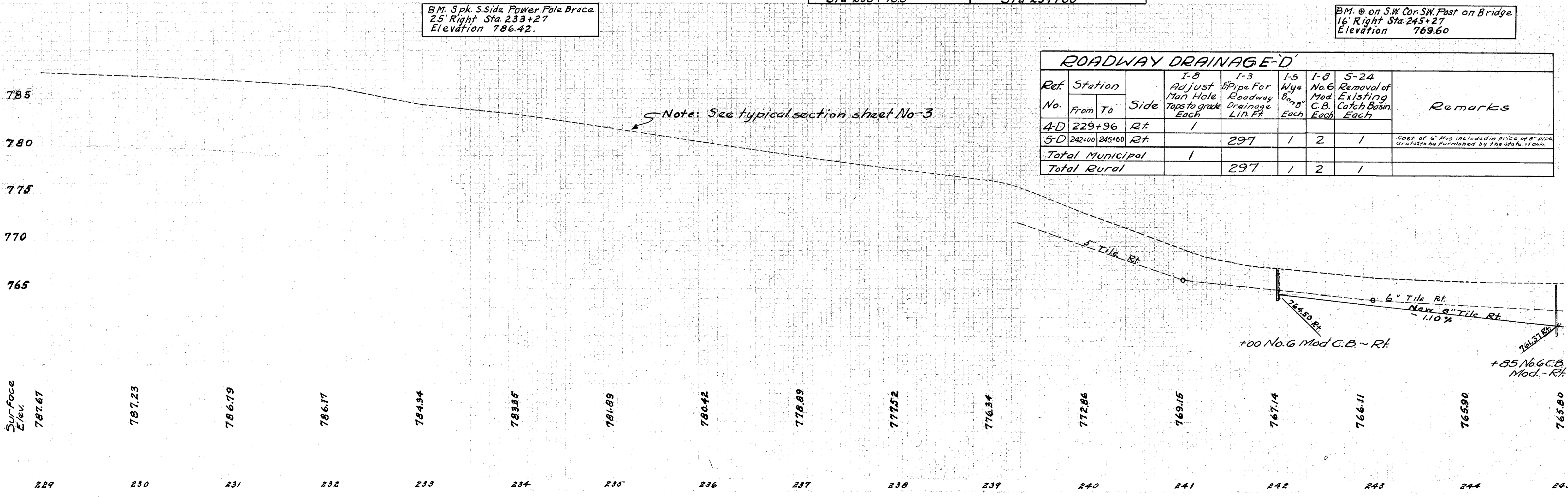
Note: Items 38-A to 50-A inclusive are shown in table on Sheet No. 13

Note: See Cross Section Sheet No. 19 for dimensions of width of pavement transition (Sta. 239+00 to Sta. 245+00)



B.M. Spk. S. Side Power Pole Brace
25' Right Sta. 233+27
Elevation 786.42.

B.M. @ on S.W. Cor. SW. Post on Bridge
16' Right Sta. 245+27
Elevation 769.60



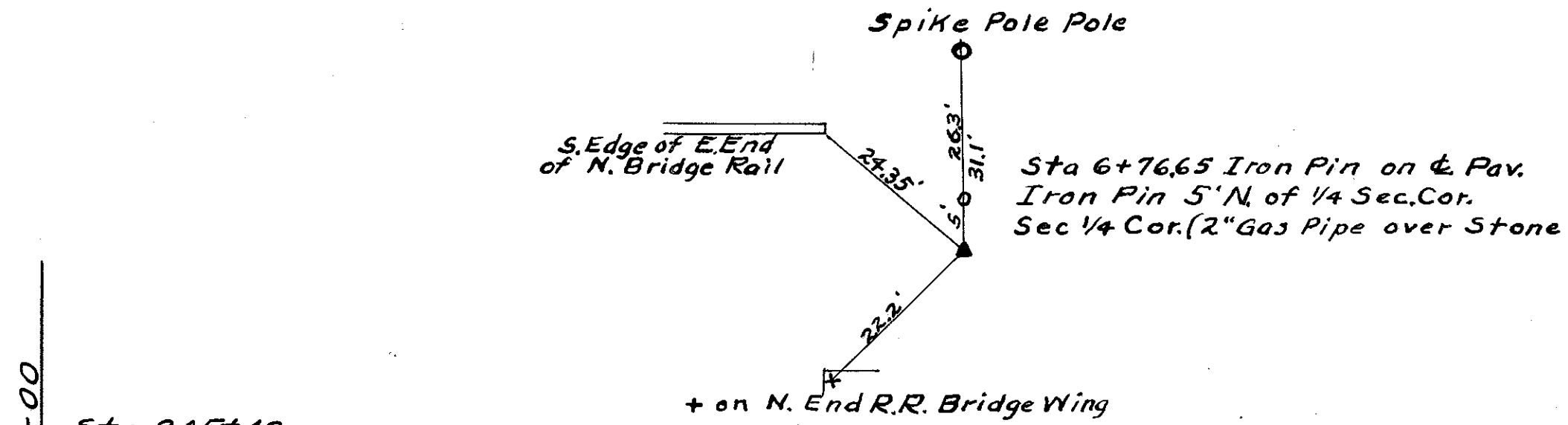
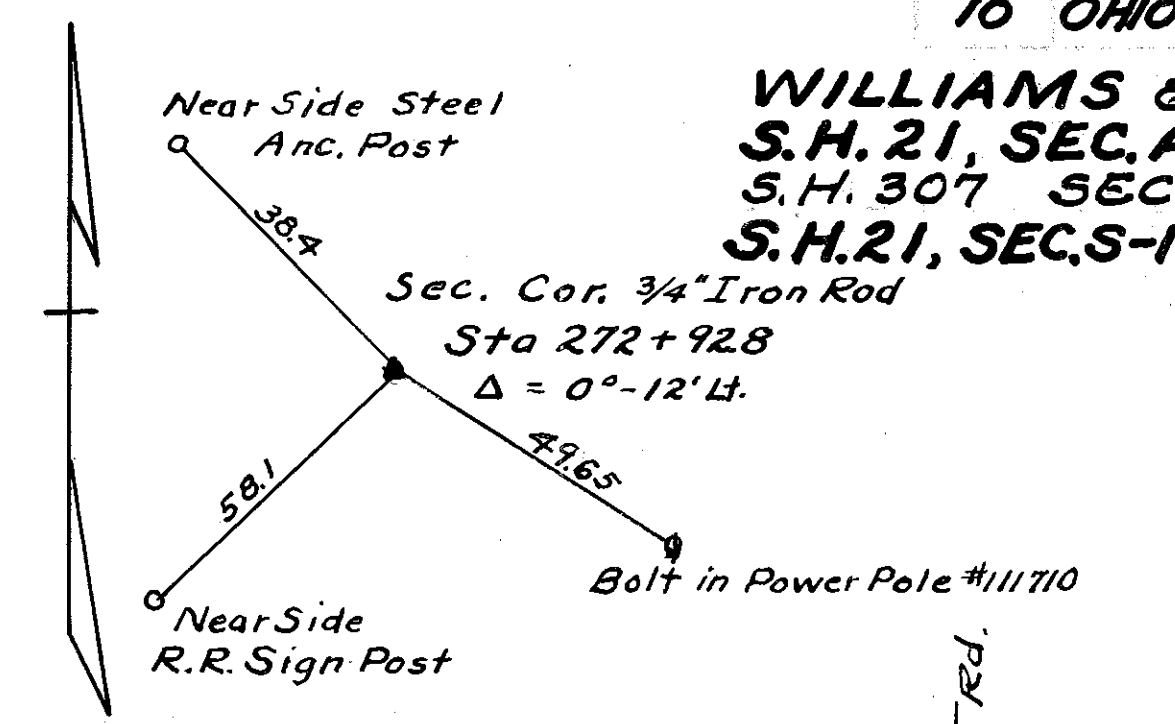
Note: See typical section sheet No. 3

ROADWAY DRAINAGE - D								
Ref. No.	Station	Side	I-8 Adjust Man Hole Taps to grade Each	I-3 8" Pipe For Roadway Drainage Lin. Ft.	I-5 Wye 8" x 8" Each	I-8 No. 6 Mod. Existing C.B. Each	S-24 Removal of Existing Catch Basin Each	Remarks
4-D	229+96	Rt.	1					
5-D	242+00	Rt.		297	1	2	1	Cost of 6" Plug included in price of 8" pipe. Grates to be furnished by the State of Ohio.
Total Municipal			1					
Total Rural				297	1	2	1	

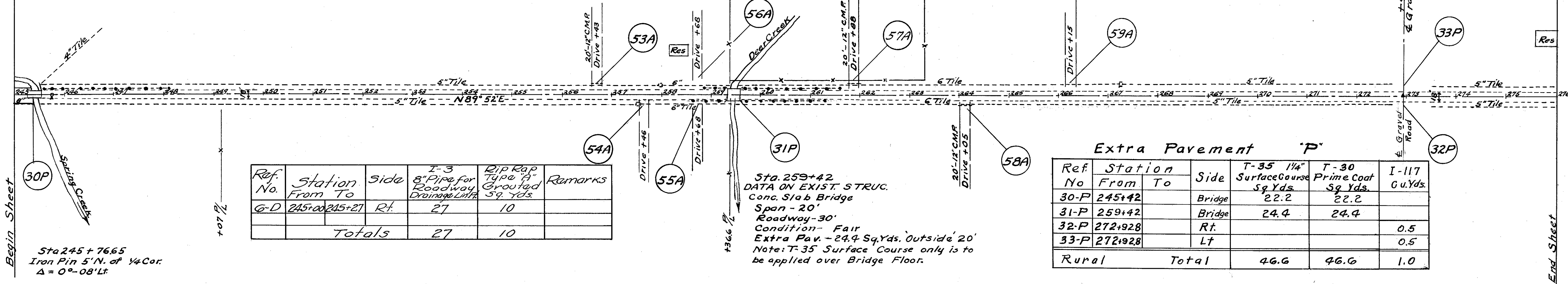
WILLIAMS & FULTON COUNTY
 S.H. 21, SEC. ALVORDTON (P) & R
 S.H. 307 SEC. F (PT.)
 S.H. 21, SEC. S-1, FAYETTE (P) & K-2

Drives "A"

Ref. No	Station From	Station To	Side	I-117 Cu.Yds.	T-35 1/4" Surface Course Sq.Yds.
53-A	256+43		Lt.	0.5	
54-A	257+46		Rt.	0.5	
55-A	258+68		Rt.	0.5	
56-A	258+68		Lt.	0.5	
57-A	261+88		Lt.	0.5	
58-A	264+05		Rt.	0.5	
59-A	266+15		Lt.		10.0
Rural Total				3.0	10.0



Sta 245+42
 DATA ON EXIST. STRUC
 Conc. Slab Bridge
 Span - 18'
 Roadway - 30'
 Condition - Fair
 Extra Pav. = 22.2 Sq.Yds. 'Outside 20'
 Note: T-35 Surface Course only is to be applied over Bridge Floor



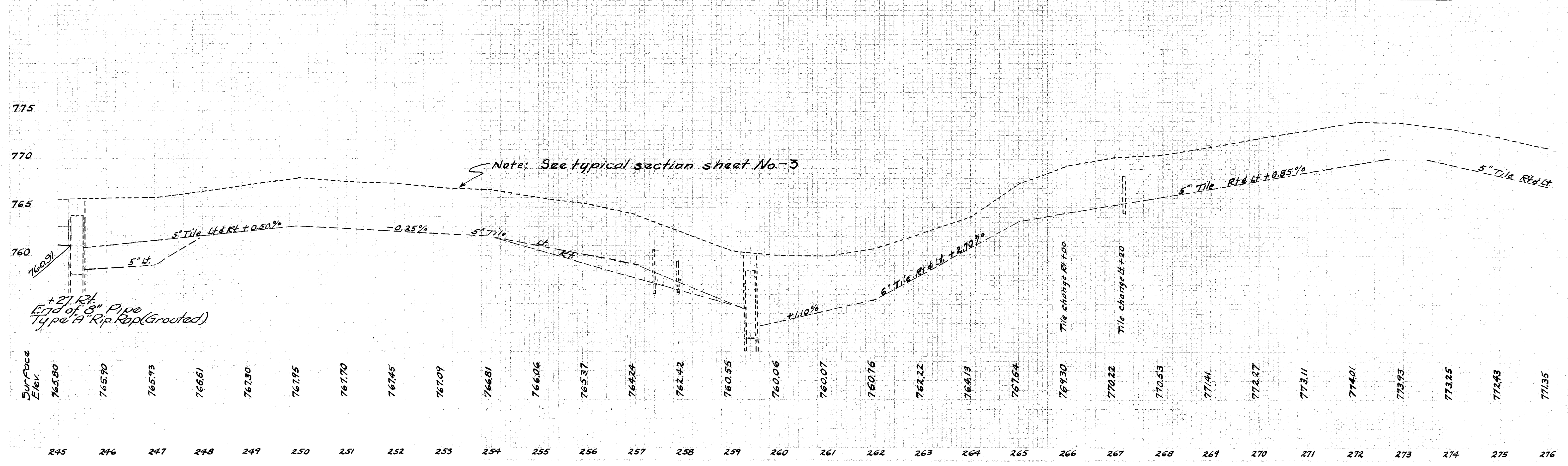
Extra Pavement "P"

Ref. No	Station From	Station To	Side	T-35 1/4" Surface Course Sq.Yds.	T-30 Prime Coat Sq.Yds.	I-117 Cu.Yds.
30-P	245+42		Bridge	22.2	22.2	
31-P	259+42		Bridge	24.4	24.4	
32-P	272+92.8		Rt.			0.5
33-P	272+92.8		Lt.			0.5
Rural Total				46.6	46.6	1.0

B.M. + on SW Cor of SW Bridge Post
 16' Rt. of Sta 245+27
 Elev. 769.60

B.M. Spike in Power Pole
 45' Rt. of Sta 256+50
 Elev. 763.70

B.M. Spike in Power Pole #120003
 45' Rt. of Sta 270+60
 Elev. 771.93



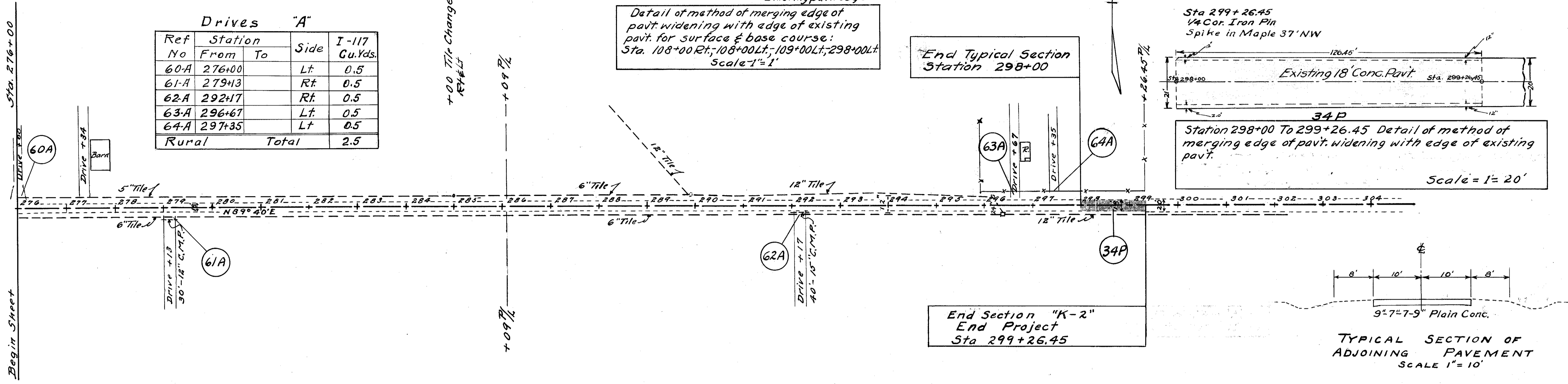
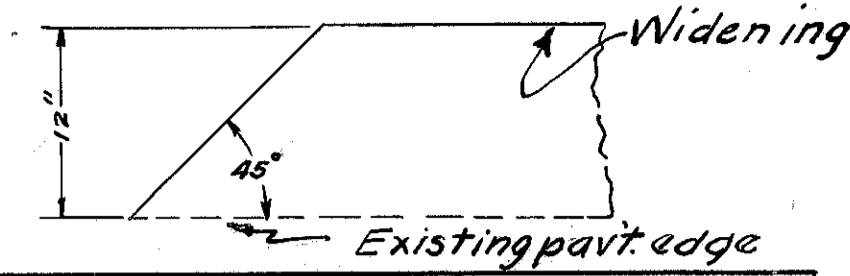
WILLIAMS & FULTON COUNTY
S.H. 21 SEC. ALVORDTON (P) & R
S.H. 307 SEC. F (P.T.)
S.H. 21, SEC. S-1, FAYETTE (P) & K-2

Extra Pavement "P"

Ref No	Station From	Station To	Side	T-35 1/4" Surface Course Sq. Yds.	B-35 1/2" Minimum Leveling Course Sq. Yds.	B-35 3" Base Course Sq. Yds.	T-30 Prime Coat Sq. Yds.	I-20 Insulation Course Sq. Yds.	E-10 Sealing Edges Lineal Ft.
34P	298+00	299+26.45		288.0	288.0	42.2	253.0	56.2	253.0
Rural	Total			288.0	288.0	42.2	253.0	56.2	253.0

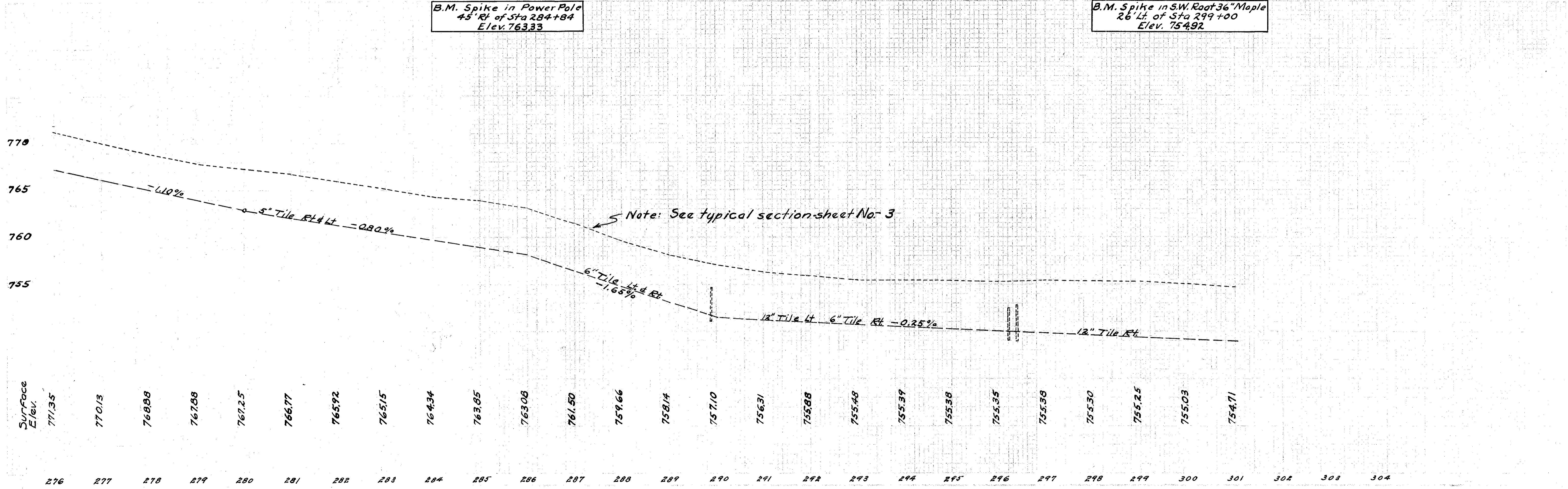
Drives "A"

Ref No	Station From	Station To	Side	I-117 Cu. Yds.
60A	276+00		Lt	0.5
61A	279+13		Rt	0.5
62A	292+17		Rt	0.5
63A	296+67		Lt	0.5
64A	297+35		Lt	0.5
Rural	Total			2.5



B.M. Spike in Power Pole
45' Rt of Sta 284+84
Elev. 763.33

B.M. Spike in S.W. Root 36" Maple
26' Lt. of Sta 299+00
Elev. 754.92



Station	Surface Elev.
276	771.35
277	770.13
278	768.88
279	767.88
280	767.25
281	766.77
282	765.92
283	765.15
284	764.34
285	763.65
286	763.08
287	761.50
288	759.66
289	758.14
290	757.10
291	756.31
292	755.88
293	755.48
294	755.39
295	755.38
296	755.35
297	755.38
298	755.30
299	755.25
300	755.03
301	754.71