

FED. RD DIST. NO.	STATE	FED. AID PROJECT	FISCAL YEAR
10	OHIO	409A	1925

I.C.H. 21 SEC.-L
FULTON COUNTY

STATE OF OHIO
DEPARTMENT OF HIGHWAYS AND PUBLIC WORKS
DIVISION OF HIGHWAYS
BUREAU OF CONSTRUCTION

TOLEDO ~ ANGOLA ROAD

I.C.H. No. 21 SEC. "L" PET. No. 3571

FULTON COUNTY

CHESTERFIELD & ROYALTON TOWNSHIPS DEC. 1923

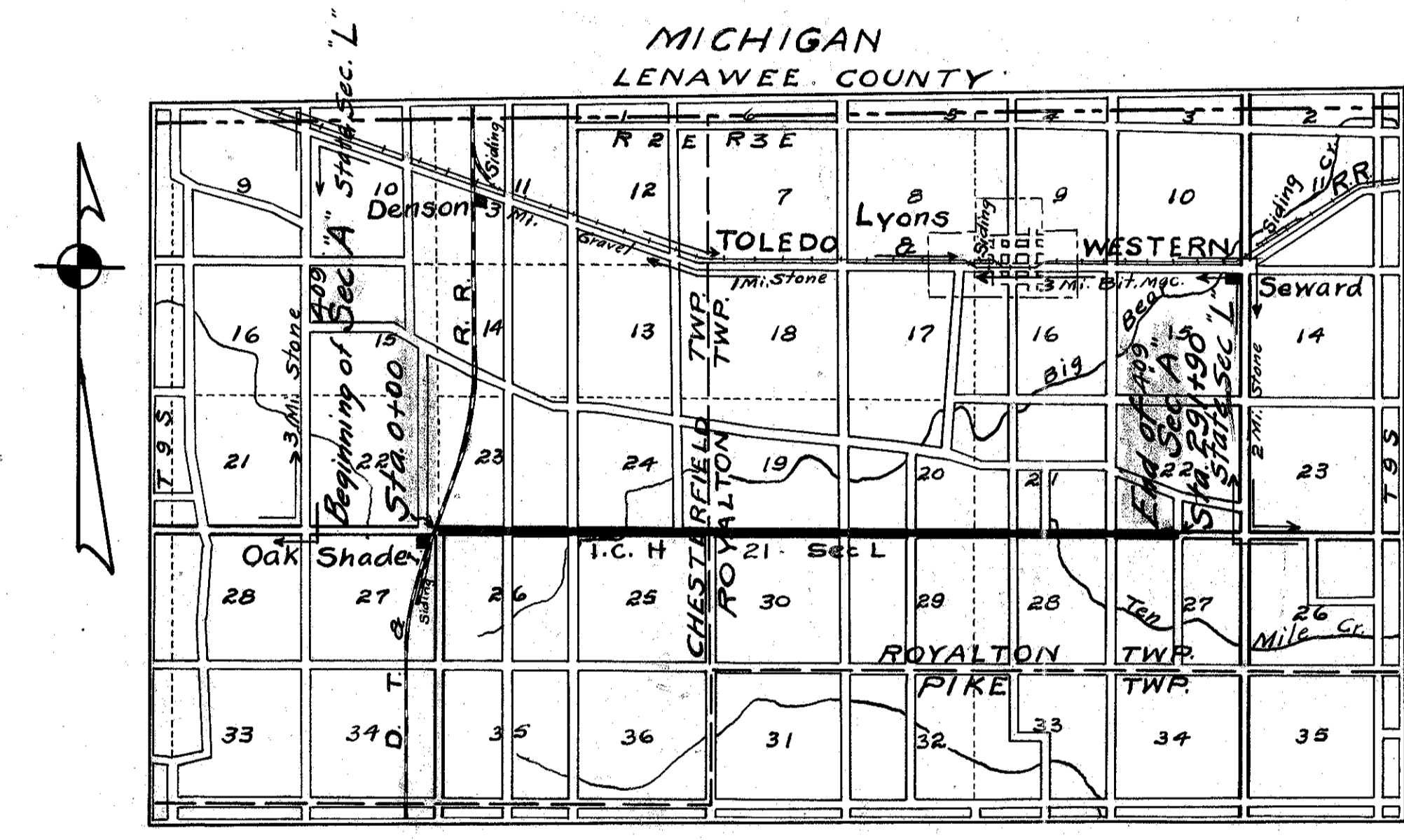
6/23/24
chd/2f

INDEX

Title Page	Sheet 1
Typical Sections	Sheet 2
Plan & Profile	Sheet 3 - 12
Cross Sections	Sheet 13 - 21
Drain Pipe Chart	Sheet 21
Bridges & Culverts	Sheet 22 - 24
Summary of Quantities	Sheet 25

CONVENTIONAL SIGNS

- State line
- County line
- Township line
- Section line
- Center line
- City or Village line
- Fence
- Telephone or telegraph
- Steam railroad
- Electric line
- Trees and stumps



The Standard Specifications of the State of Ohio Division of Highways in force on date of contract will govern this improvement.

I hereby approve these plans and declare that the making of this improvement will require the closing to traffic of the highway and that detours will be provided as shown on the plan and estimates.

Approved: L. W. Bates
Date: 2-7-1924 Resident Engineer

Approved: M. J. H. Mahan
Date: 6-16-24 Division Engineer

Approved: G. F. Adlenger
Date: 6-19-24 State Highway Engineer

Approved: R. Boulay
Date: 6-19-24 Director of Highways and Public Works.

Recommended for Approval: _____
Date: _____ District Engineer
Bureau of Public Roads.

Recommended for Approval: _____
Date: _____ Chief Engineer
Bureau of Public Roads.

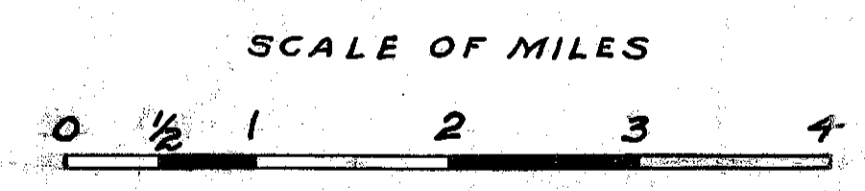
Approved: _____
Date: _____ Chief of Bureau.

We, the Commissioners of Fulton County hereby approve these plans and certify that the right-of-way 60 feet wide, is available for the construction, maintenance and repair of the above highway.

A. Landis Ford
C. H. Leist
W. A. Tappan

Date: 2-4-1924 County Commissioners.

LOCATION PLAN



PORTION TO BE IMPROVED
DETOURS SHOWN THUS

SCALES

- Plan 1" = 100'
- Profile (Vertical) 1" = 10'
- Profile (Horizontal) 1" = 100'
- Cross Sections 1" = 5'

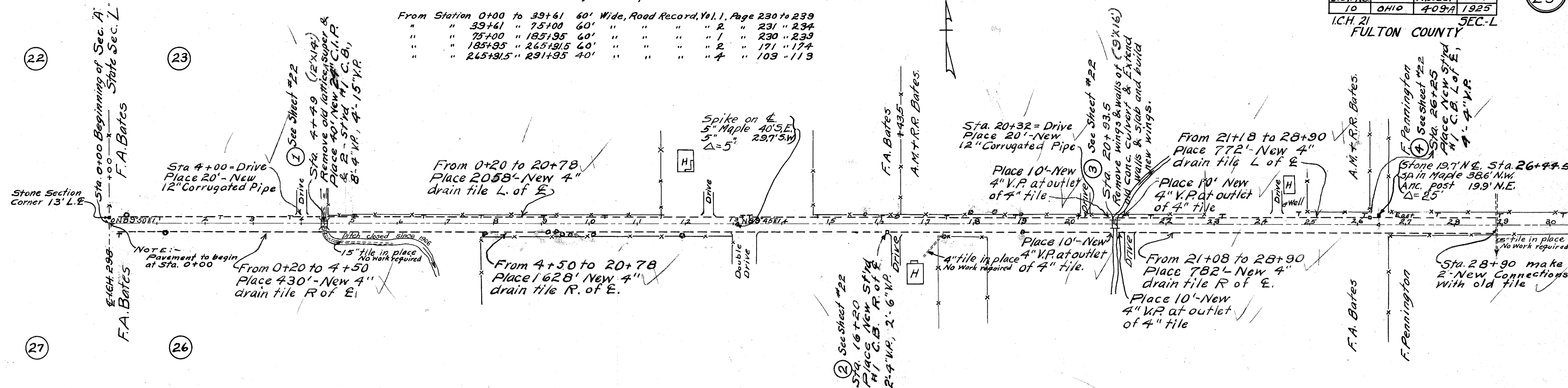


FED. RD. DIST. NO.	STATE	FED. AID PROJECT YEAR	FISCAL YEAR
10	OHIO	409A	1925

I.C.H. 21 SEC.-L
FULTON COUNTY

Width of Right of Way

From Station 0+00 to 39+61	60' Wide, Road Record, Vol. 1, Page 230 to 239
" " 39+61 " 75+00	60' " " " 2 " 231 " 234
" " 75+00 " 185+95	60' " " " 1 " 230 " 239
" " 185+95 " 265+91.5	60' " " " 2 " 171 " 174
" " 265+91.5 " 291+95	40' " " " 4 " 103 " 113



NOTE: -
Grade Line shown is Crown of finished pavement.

B.M. Sta 0+00 South side 2" iron guide post 13' L. Elev. 804.92

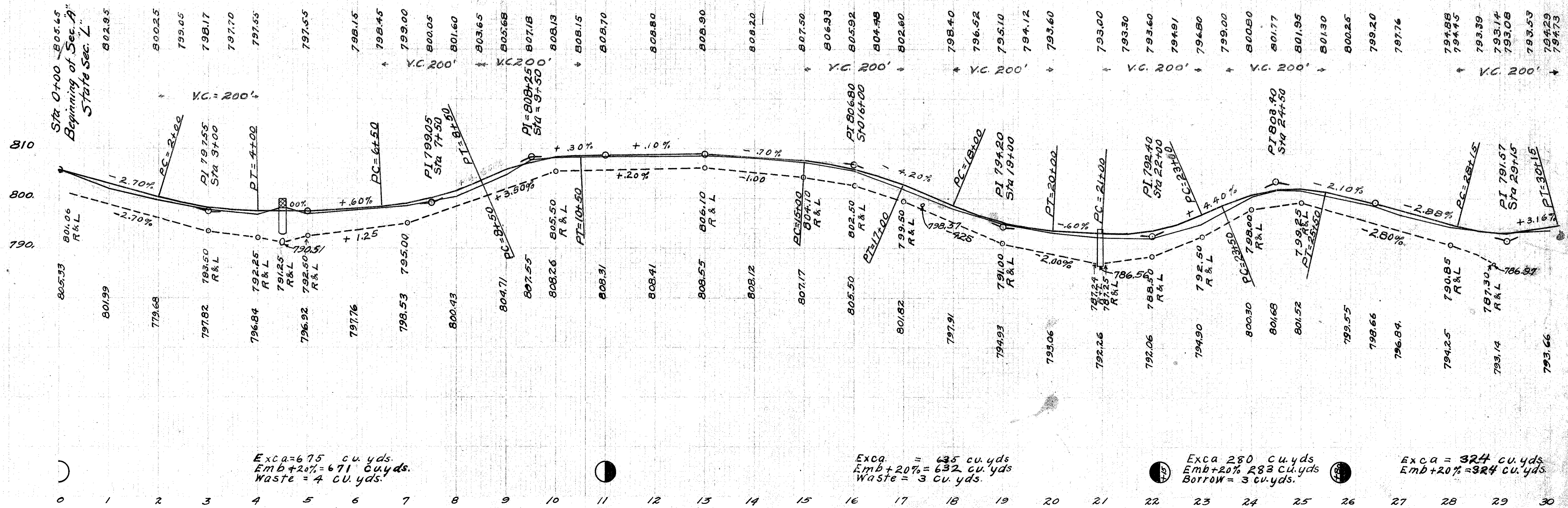
B.M. + on N.E. cor. abutment of bridge Elev. 796.55

B.M. Sta 11+95 Spk. in large oak 25' R. Elev. 809.23

B.M. Sta 17+94 Spk. in hickory 25' Left Elev. 800.84

B.M. + on West S. Wall of Culvert Elev. 804.28

B.M. Spk. in hickory S.E. cor. cross roads Elev. 799.92



Exca = 675 cu. yds.
Emb + 20% = 671 cu. yds.
Waste = 4 cu. yds.

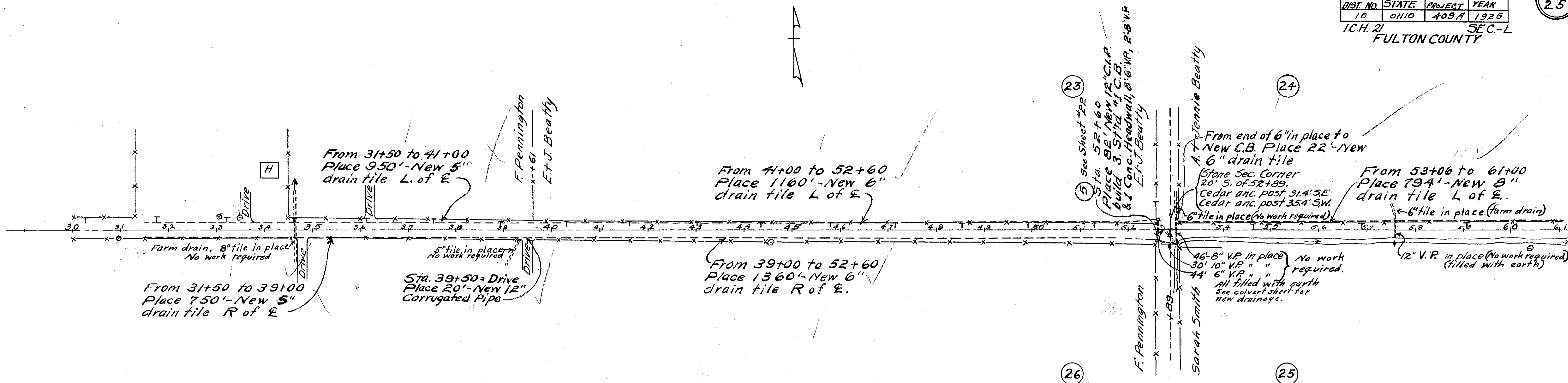
Exca = 635 cu. yds.
Emb + 20% = 632 cu. yds.
Waste = 3 cu. yds.

Exca 280 cu. yds.
Emb + 20% = 283 cu. yds.
Borrow = 3 cu. yds.

Exca = 324 cu. yds.
Emb + 20% = 324 cu. yds.

FED. RD DIST. NO.	STATE	FED. AID PROJECT	FISCAL YEAR
10	OHIO	403A	1925

I.C.H. 21
SEC-L
FULTON COUNTY

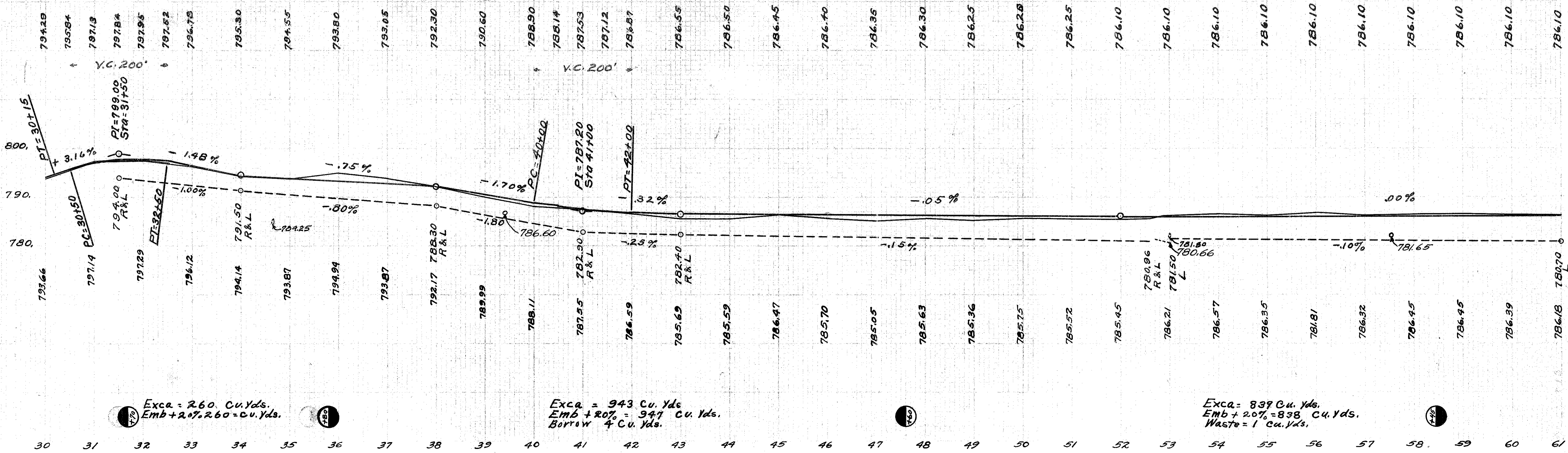


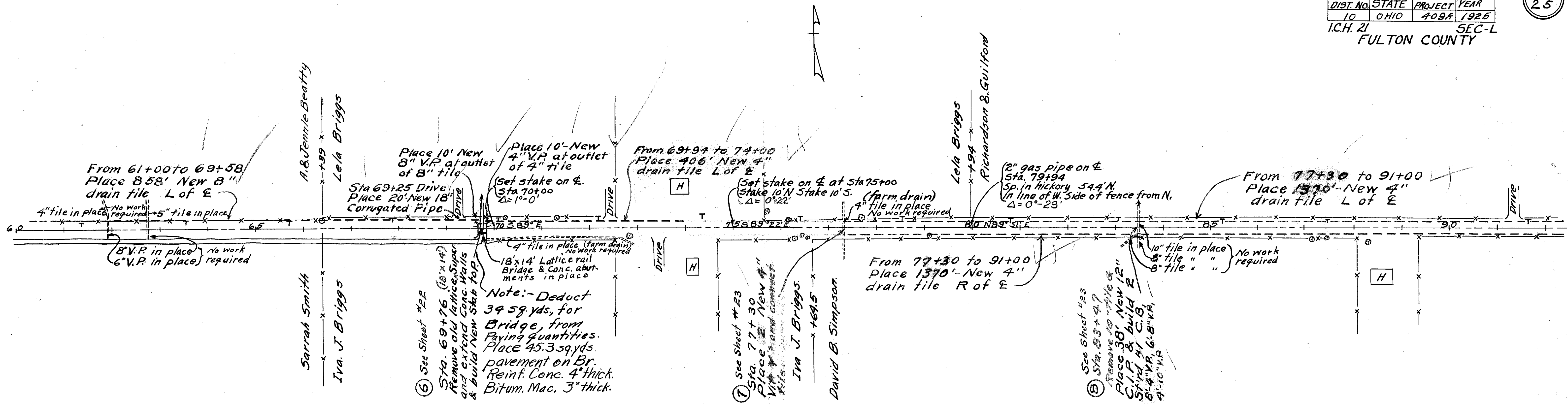
B.M. Sta. 33+50 Spk. in 6" Walnut tree 26'L Elev. 795.70

B.M. Sta. 44+60 Spk. in Elm tree 27'R Elev. 786.60

B.M. + on NW abutment of bridge 350' S. of + road Elev. 786.44

B.M. Sta. 60+40 Spk. in tree 40' Right Elev. 789.20





⑥ See Sheet #22
Sta. 69+76 (18'x14')
Remove old lattice, Super
and extend Conc. Walls
& build New Skab Top
Note: - Deduct
39.59 yds. for
Bridge, from
Paving quantities.
Place 45.3 sq. yds.
pavement on Br.
Reinf. Conc. 4" thick.
Bitum. Mac. 3" thick.

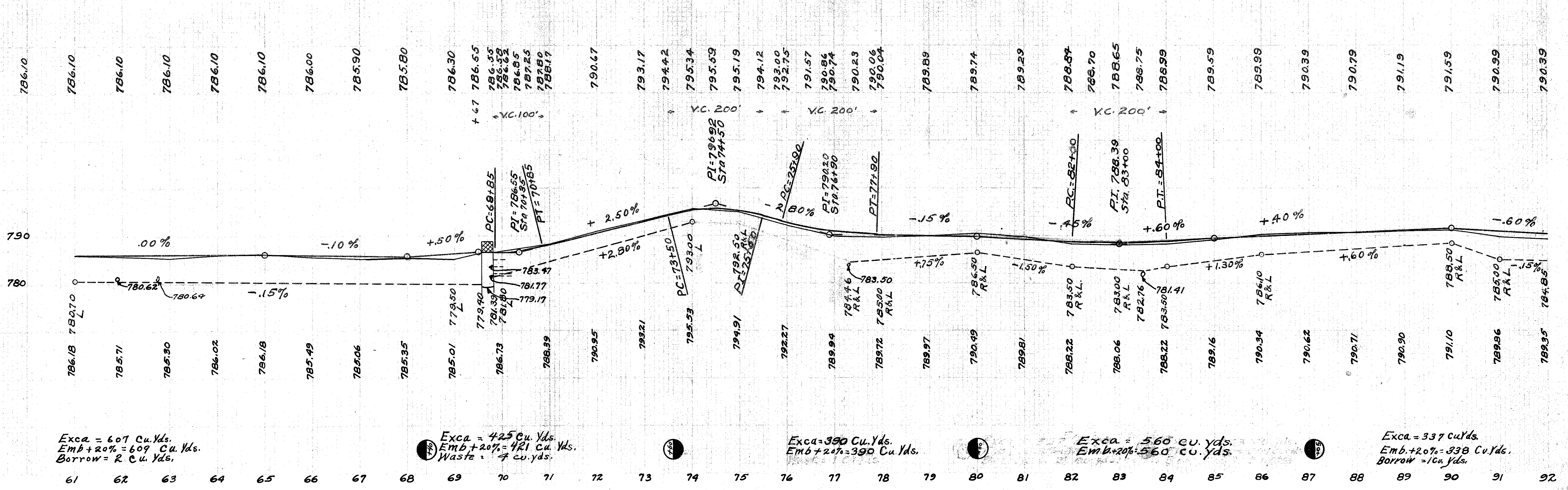
⑦ See Sheet #23
Sta. 77+30
Place 2' New 4"
V.P. & build
tile.
Iva J. Briggs.
David B. Simpson

⑧ See Sheet #23
Sta. 83+47
Remove old pipe &
Place 30' New 12"
C.I.P. & build 2'
Sp. in hickory 54.4' N.
8'-4" V.P. 6'-8" H.A.
4'-10" V.P.

BM on Z in Zeller on
S.E. wing of bridge
Elev. 785.43

BM Sta 79+94 Spk. in
S. side hickory 50' N.
Elev. 791.64

BM Sta 88+30 Spk.
in Maple 30' R.
Elev. 792.65



Exca = 607 Cu. Yds.
Emb + 20% = 609 Cu. Yds.
Borrow = 2 Cu. Yds.

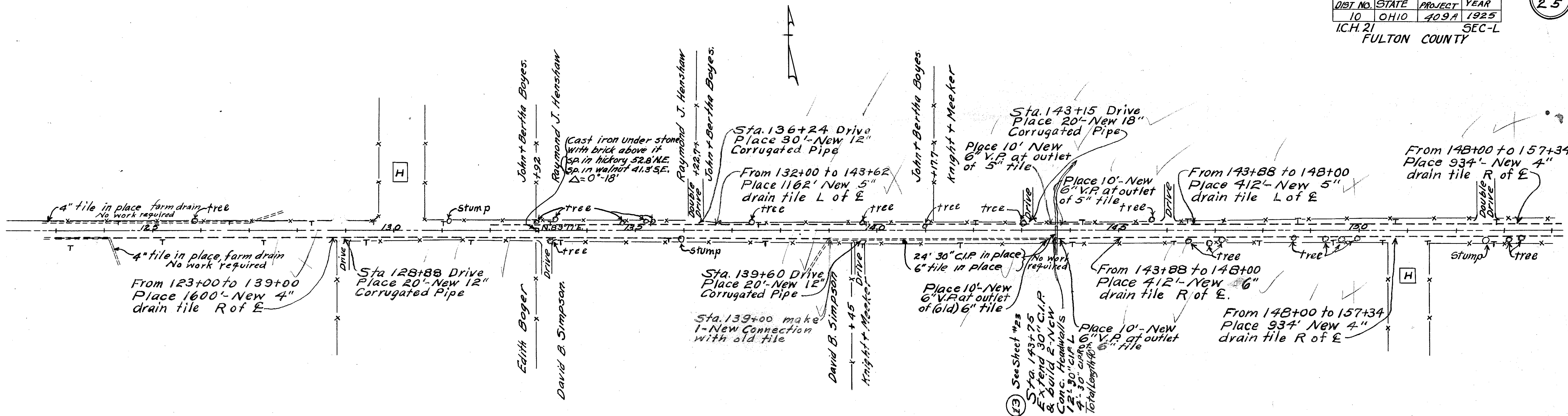
Exca = 425 Cu. Yds.
Emb + 20% = 421 Cu. Yds.
Waste = 4 cu. yds.

Exca = 390 Cu. Yds.
Emb + 20% = 390 Cu. Yds.

Exca = 560 cu. yds.
Emb + 20% = 560 cu. yds.

Exca = 337 cu. yds.
Emb + 20% = 338 Cu. Yds.
Borrow = 1 cu. yds.

FED. RD. DIST. NO.	STATE	FED. AID PROJECT	FISCAL YEAR
10	OHIO	409A	1925
I.C.H. 21			SEC-L
FULTON COUNTY			

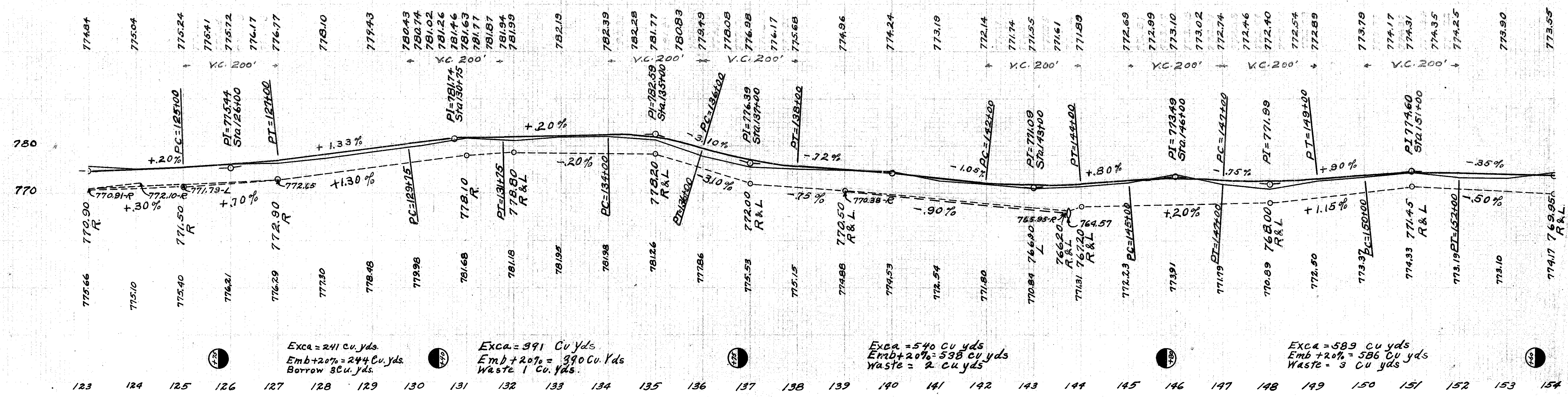


BM Sta. 125+88.5 Spk. in walnut 23' Left Elev. 776.92

BM Sta. 132+92 Spk. in walnut 21' Left Elev. 782.88

BM Sta. 146+90 Spk. in oak tree 27' Right Elev. 774.94

See Sheet #23
Sta. 143+75
Extend 30' C.I.P. & build 2' NEW CONC. HEADWALLS
4'-30" C.I.P. L
Total Length 66'

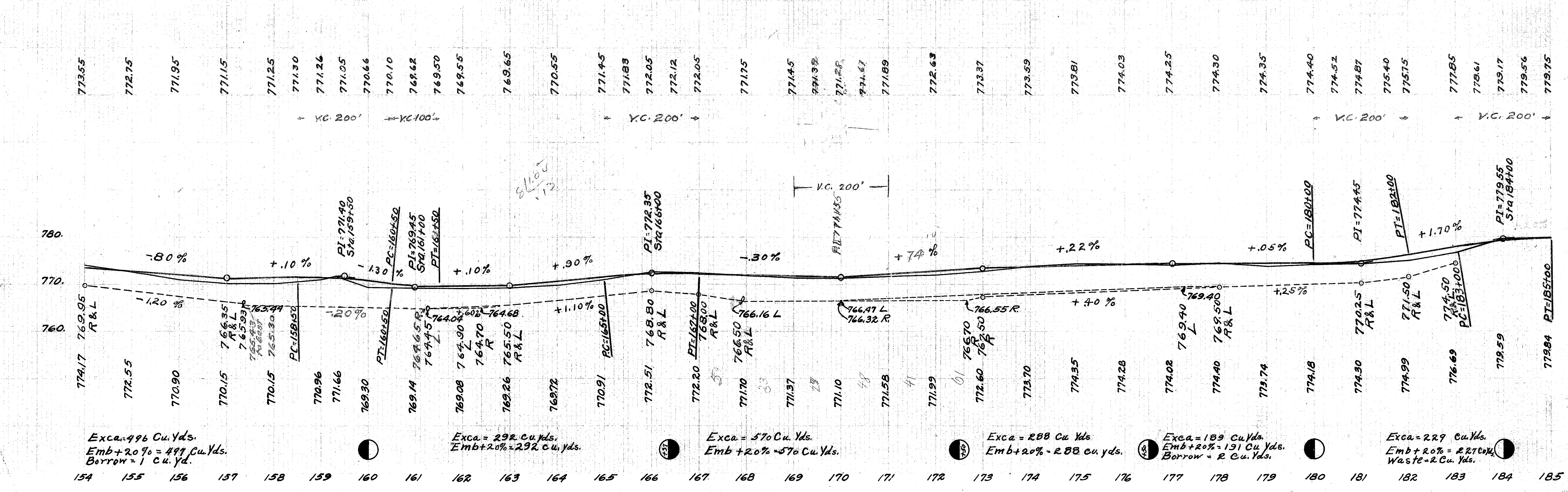
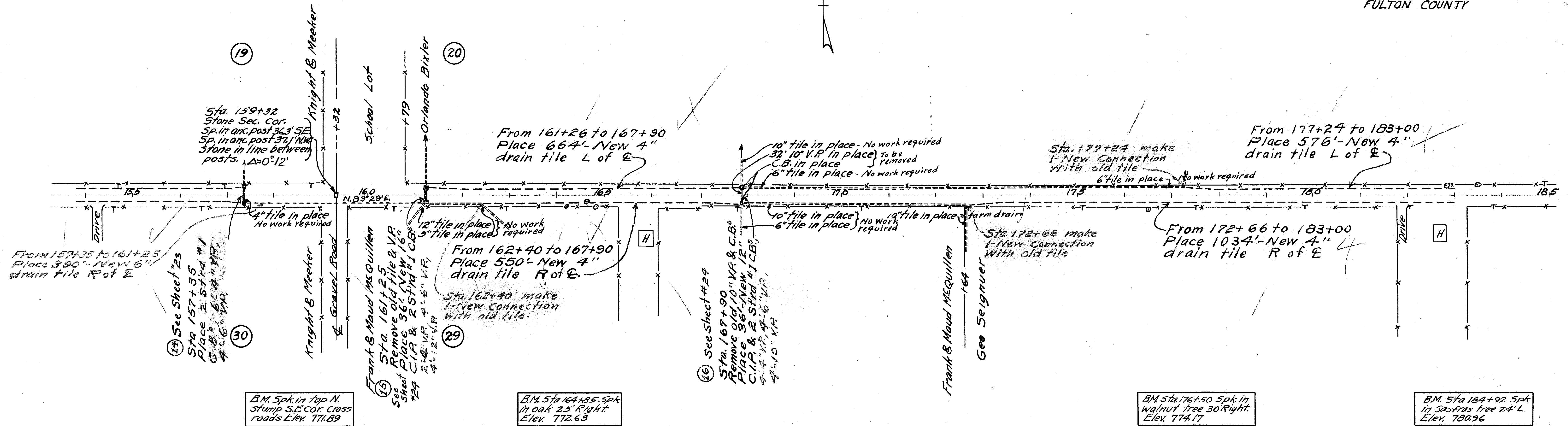


Exca = 241 Cu. yds.
Emb + 20% = 244 Cu. yds.
Borrow 3 Cu. yds.

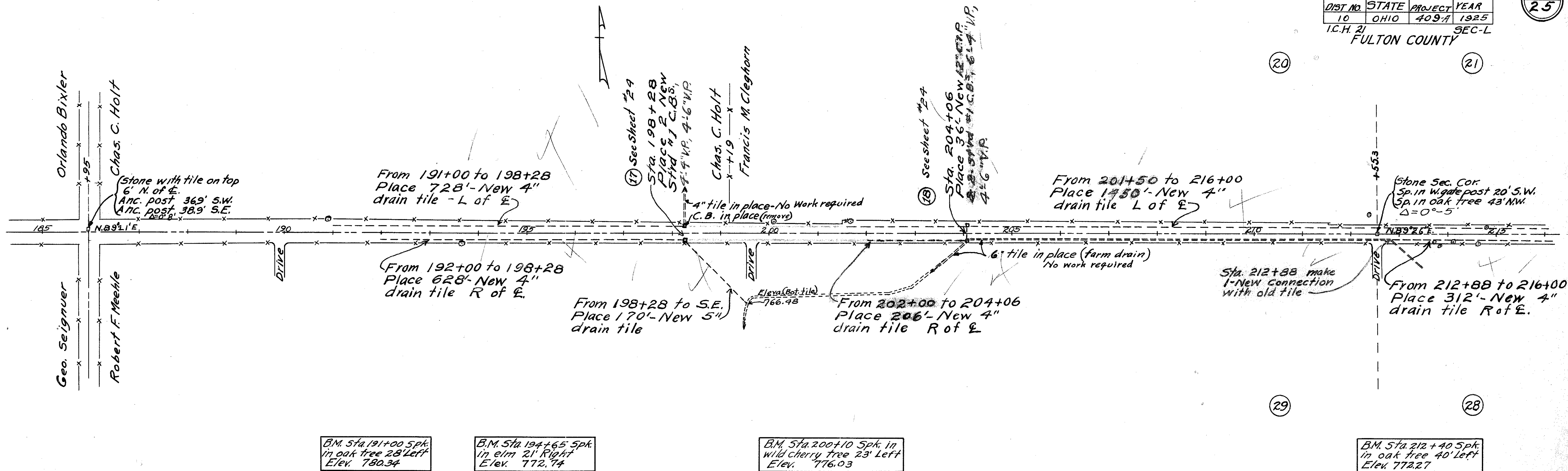
Exca = 391 Cu. yds.
Emb + 20% = 390 Cu. Yds.
Waste 1 Cu. Yds.

Exca = 540 Cu. yds.
Emb + 20% = 538 Cu. yds.
Waste = 2 Cu. yds.

Exca = 589 Cu. yds.
Emb + 20% = 586 Cu. yds.
Waste = 3 Cu. yds.



FED. RD DIST. NO.	STATE	FED. AID PROJECT	FISCAL YEAR
10	OHIO	409A	1925
I.C.H. 21			SEC-L
FULTON COUNTY			

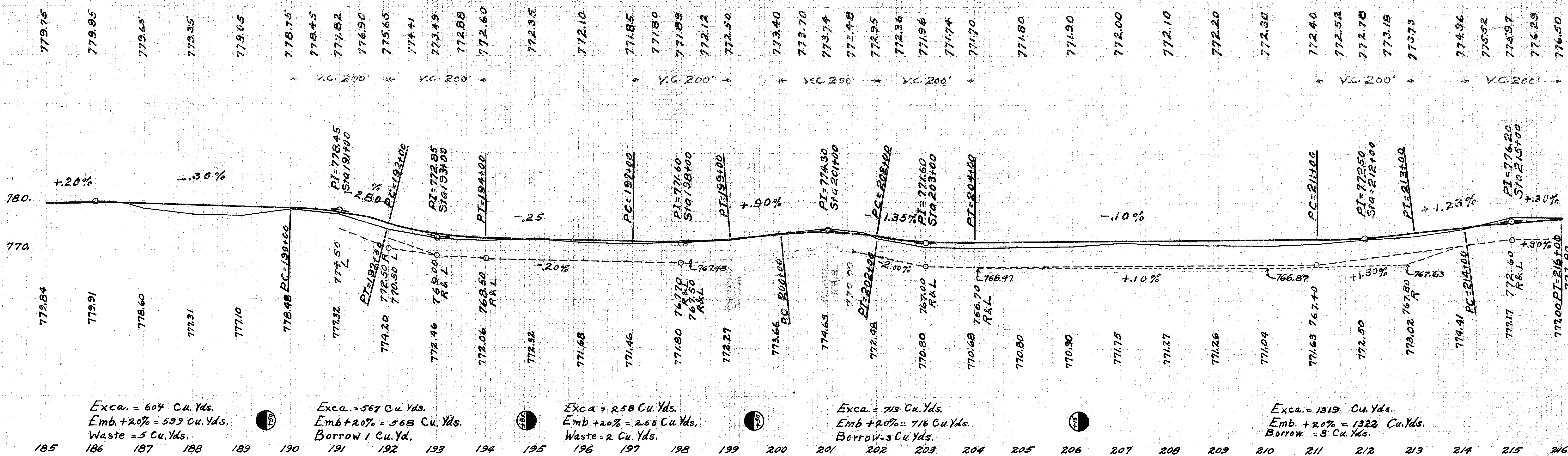


B.M. Sta. 191+00 Spk. in oak tree 28' Left Elev. 780.34

B.M. Sta. 194+65 Spk. in elm 21' Right Elev. 772.74

B.M. Sta. 200+10 Spk. in wild cherry tree 23' Left Elev. 776.03

B.M. Sta. 212+40 Spk. in oak tree 40' Left Elev. 772.27



Exca. = 604 Cu. Yds.
Emb. +20% = 599 Cu. Yds.
Waste = 5 Cu. Yds.

Exca. = 567 Cu. Yds.
Emb. +20% = 568 Cu. Yds.
Borrow = 1 Cu. Yd.

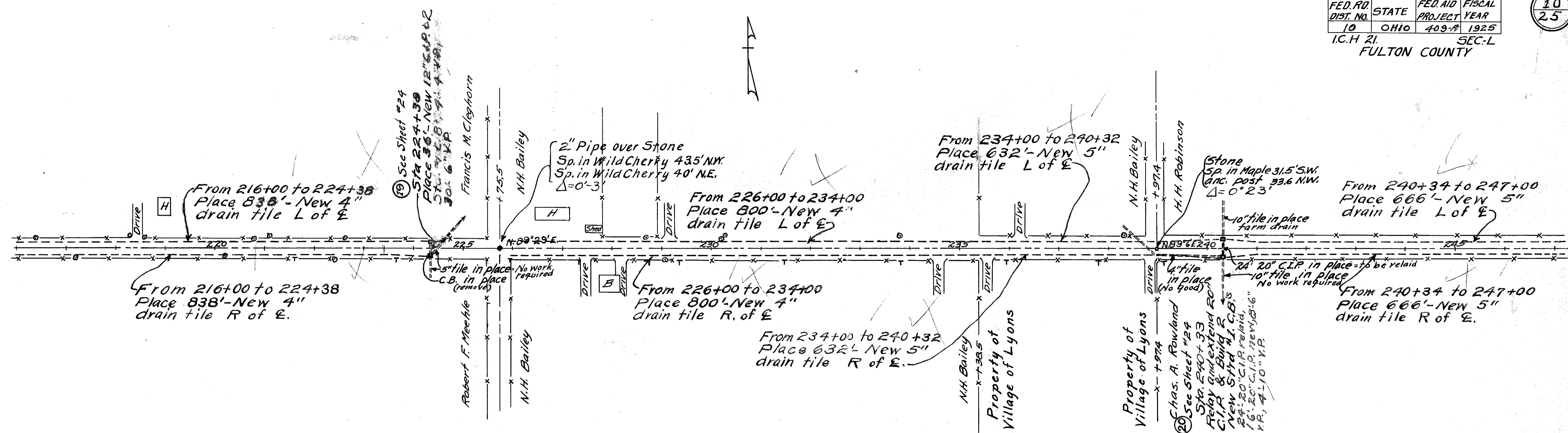
Exca. = 258 Cu. Yds.
Emb. +20% = 256 Cu. Yds.
Waste = 2 Cu. Yds.

Exca. = 713 Cu. Yds.
Emb. +20% = 716 Cu. Yds.
Borrow = 3 Cu. Yds.

Exca. = 1319 Cu. Yds.
Emb. +20% = 1322 Cu. Yds.
Borrow = 3 Cu. Yds.

FED. RD. DIST. NO.	STATE	FED. AID PROJECT	FISCAL YEAR
10	OHIO	409-A	1925
I.C.H. 21		SEC-L	
FULTON COUNTY			

10
25



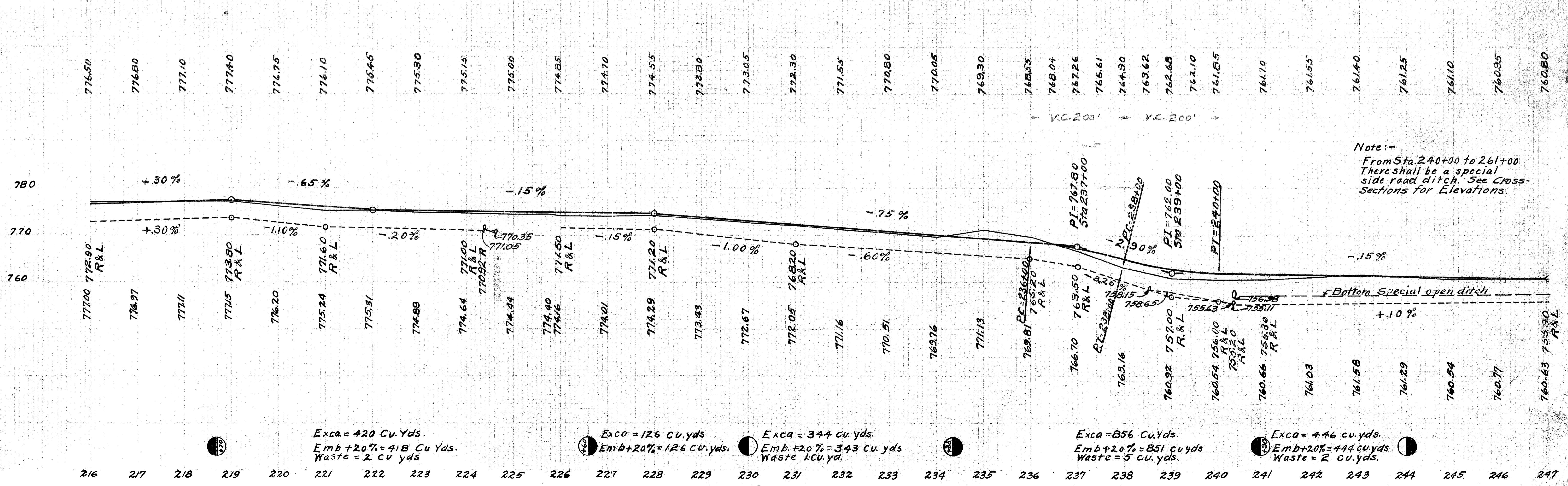
B.M. Sta. 218+32 Spk. in maple 25'-Left Elev. 777.80

B.M. Top concrete N. side 2" iron pipe S.E. cor. roads Elev. 774.02

B.M. Sta. 233+82 Spk. in apple tree 25'-L Elev. 769.84

B.M. Sta. 238+33 Spk. in walnut tree 26'-Left Elev. 765.42

B.M. Sta. 245+00 Spk. in maple 22'-Right Elev. 760.51



Exca = 420 Cu. Yds.
Emb + 20% = 418 Cu. Yds.
Waste = 2 cu yds

Exca = 126 Cu. yds
Emb + 20% = 126 cu. yds.

Exca = 344 cu. yds.
Emb + 20% = 343 cu. yds.
Waste = 1 cu. yd.

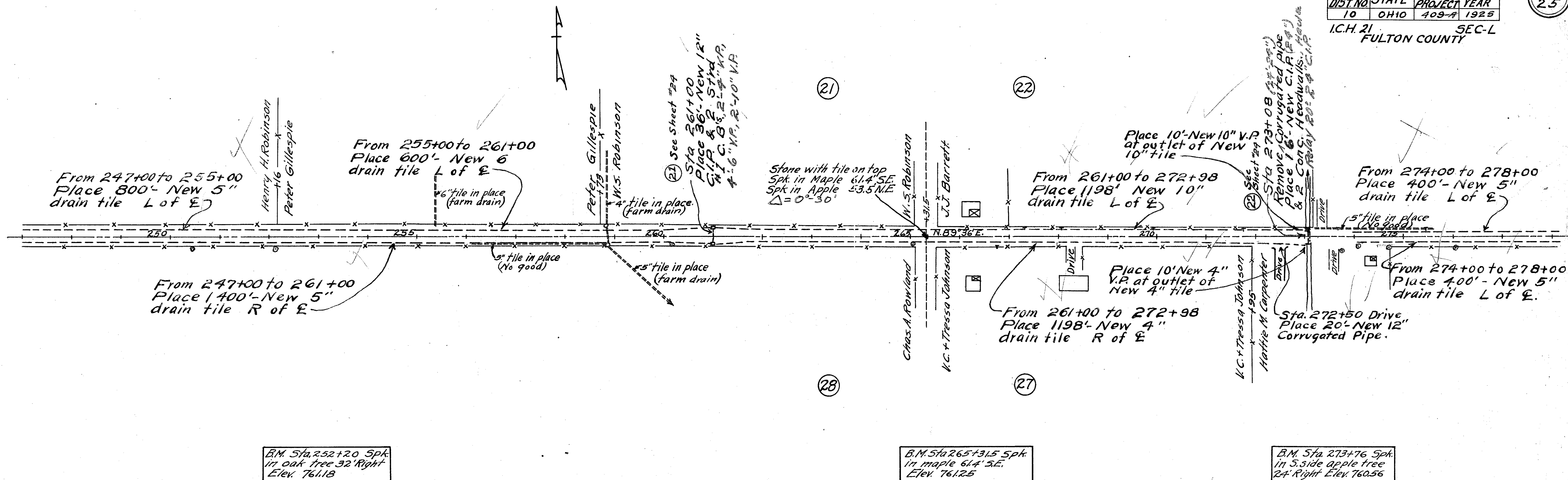
Exca = 856 Cu. Yds.
Emb + 20% = 851 cu yds.
Waste = 5 cu. yds.

Exca = 446 cu. yds.
Emb + 20% = 444 cu. yds.
Waste = 2 cu. yds.

Note:-
From Sta. 240+00 to 261+00
There shall be a special
side road ditch. See Cross-
Sections for Elevations.

FED. RD. DIST. NO.	STATE	FED. AID PROJECT	FISCAL YEAR
10	OHIO	409-A	1925

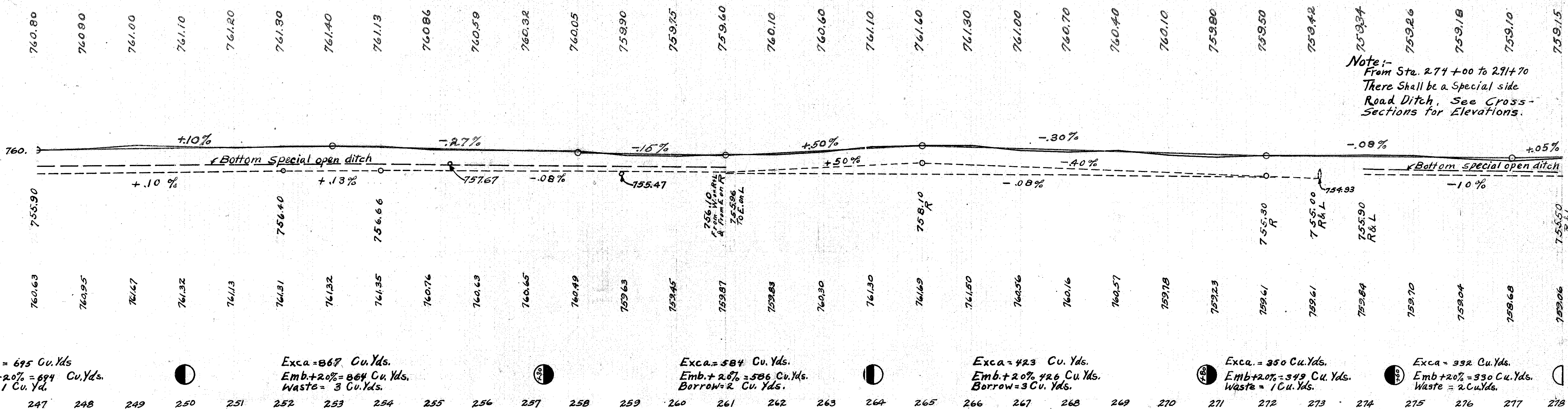
I.C.H. 21
FULTON COUNTY



B.M. Sta. 252+20 Spk. in oak tree 32' Right Elev. 761.18

B.M. Sta. 265+31.5 Spk. in maple 61.4' SE. Elev. 761.25

B.M. Sta. 273+76 Spk. in S. side apple tree 24' Right Elev. 760.56



Exca. = 695 Cu. Yds.
Emb + 20% = 694 Cu. Yds.
Waste = 1 Cu. Yd.

Exca. = 867 Cu. Yds.
Emb + 20% = 864 Cu. Yds.
Waste = 3 Cu. Yds.

Exca. = 584 Cu. Yds.
Emb + 20% = 586 Cu. Yds.
Borrow = 2 Cu. Yds.

Exca. = 423 Cu. Yds.
Emb + 20% = 426 Cu. Yds.
Borrow = 3 Cu. Yds.

Exca. = 350 Cu. Yds.
Emb + 20% = 349 Cu. Yds.
Waste = 1 Cu. Yds.

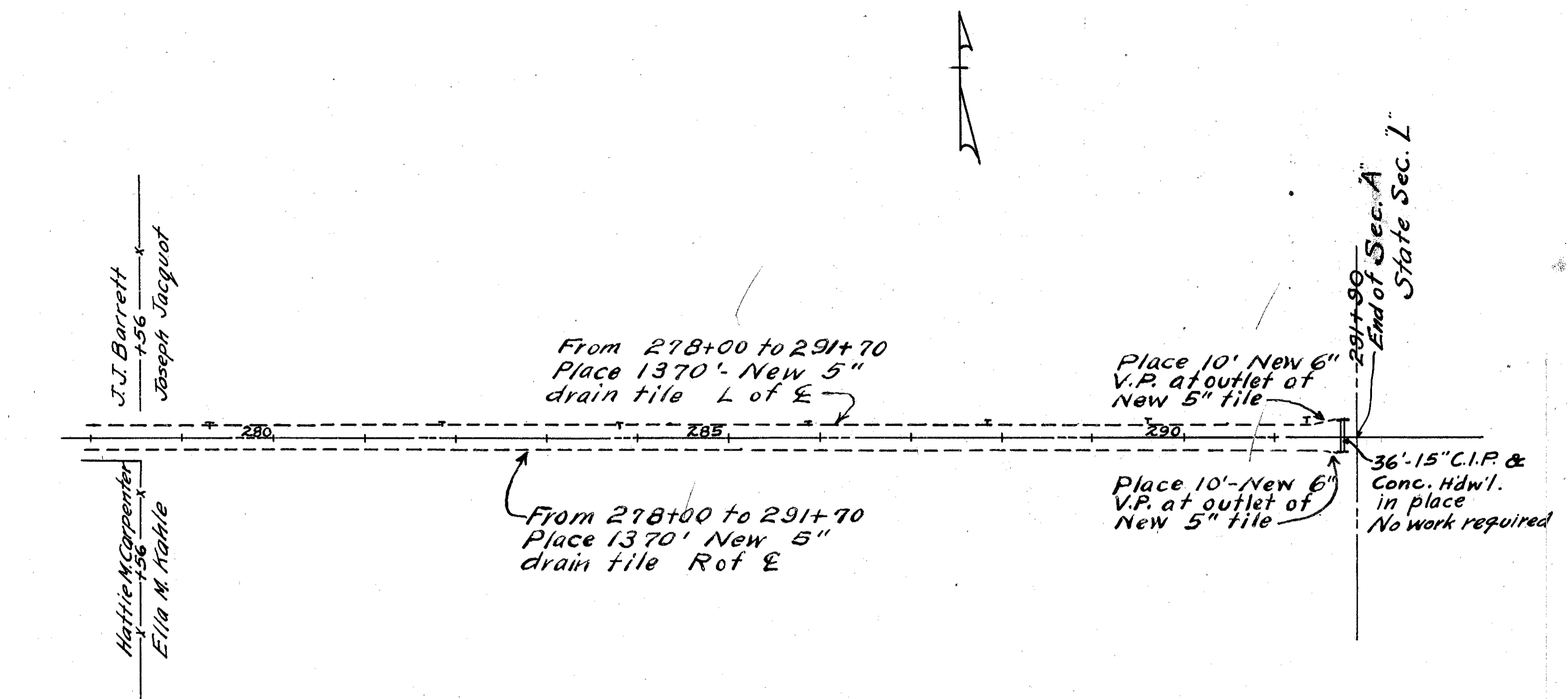
Exca. = 392 Cu. Yds.
Emb + 20% = 330 Cu. Yds.
Waste = 2 Cu. Yds.

247 248 249 250 251 252 253 254 255 256 257 258 259 260 261 262 263 264 265 266 267 268 269 270 271 272 273 274 275 276 277 278

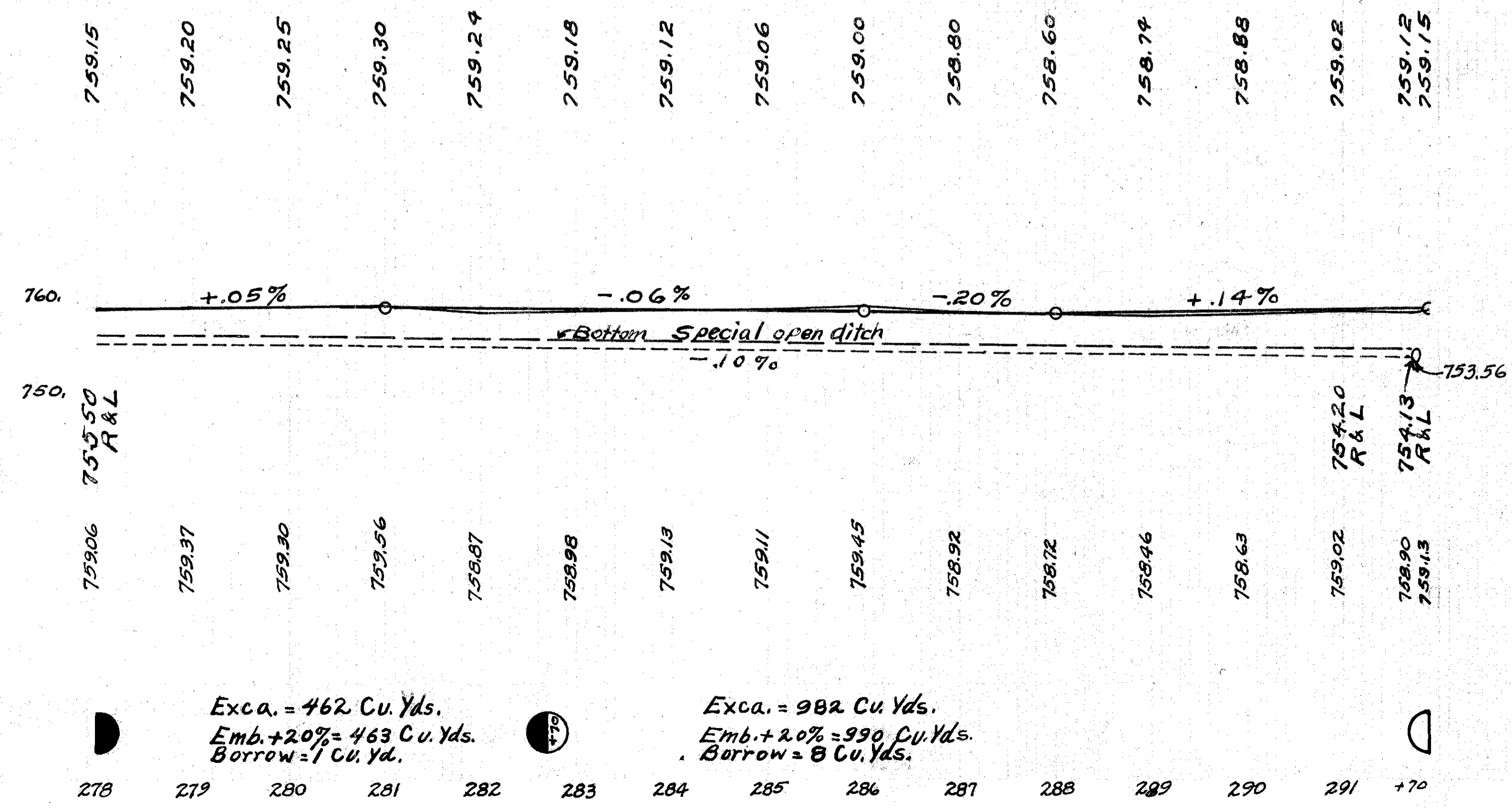
FED. RD. DIST. No.	STATE	FED. AID PROJECT	FISCAL YEAR
10	OHIO	409	1925

12
25

I.C.H. 21 SEC-L
FULTON COUNTY



B.M. Sta. 291+90 on + on W. end hdwl 26' NW Elev. 757.23



Exca. = 462 Cu. Yds.
Emb. + 20% = 463 Cu. Yds.
Borrow = 1 Cu. Yd.

Exca. = 982 Cu. Yds.
Emb. + 20% = 990 Cu. Yds.
Borrow = 8 Cu. Yds.

278 279 280 281 282 283 284 285 286 287 288 289 290 291 +70