

1055

1
6

OHIO STATE HIGHWAY "H"

FULTON COUNTY

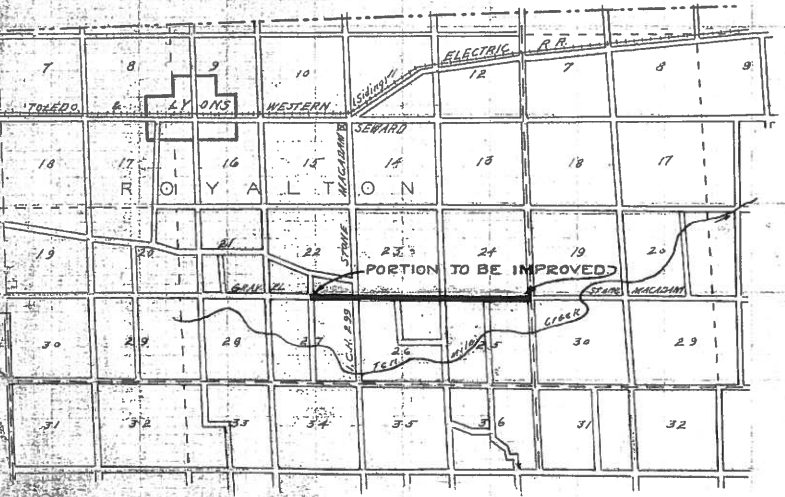
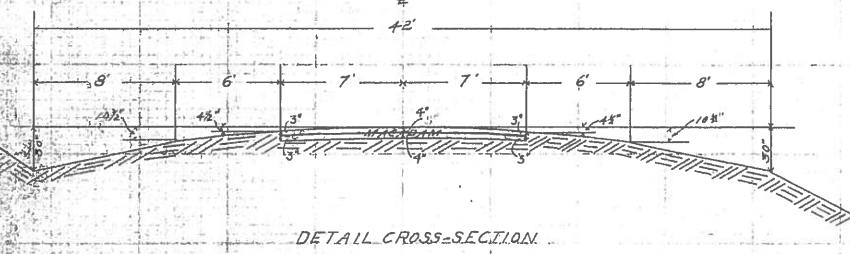
ROYALTON TOWNSHIP

TOLEDO-ANGOLA-ROAD

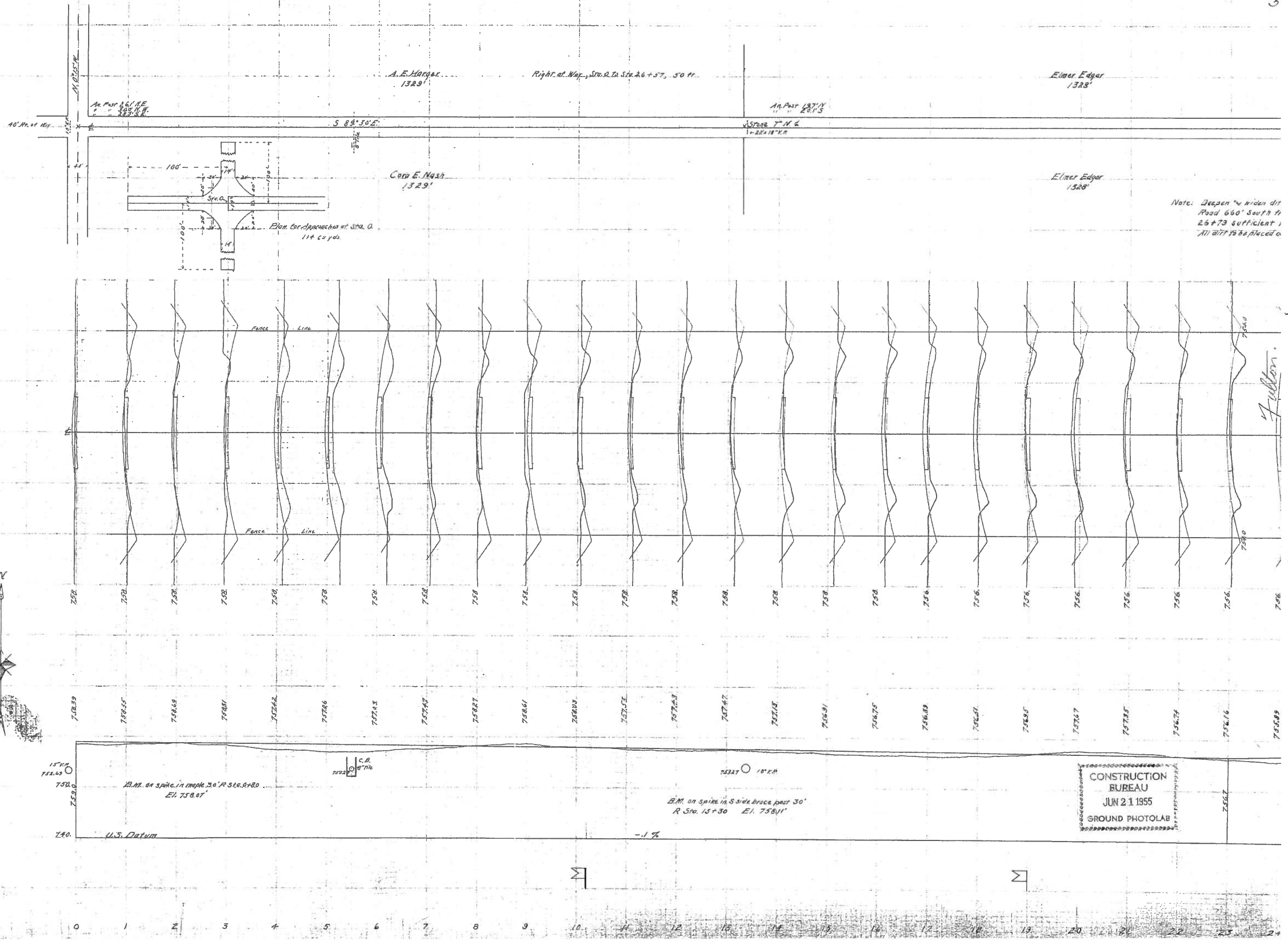
I.C.H. 21. Petition 1222

SECTION I

C. O. Castle, Resident Engineer



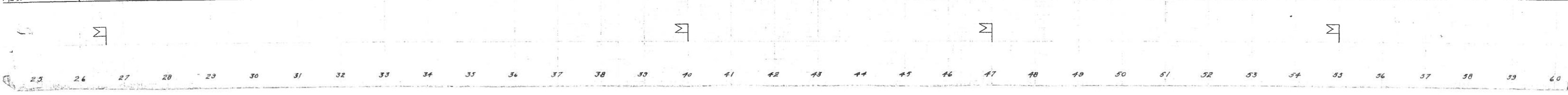
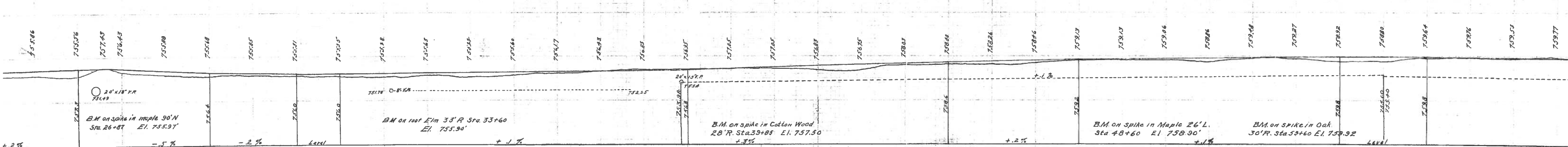
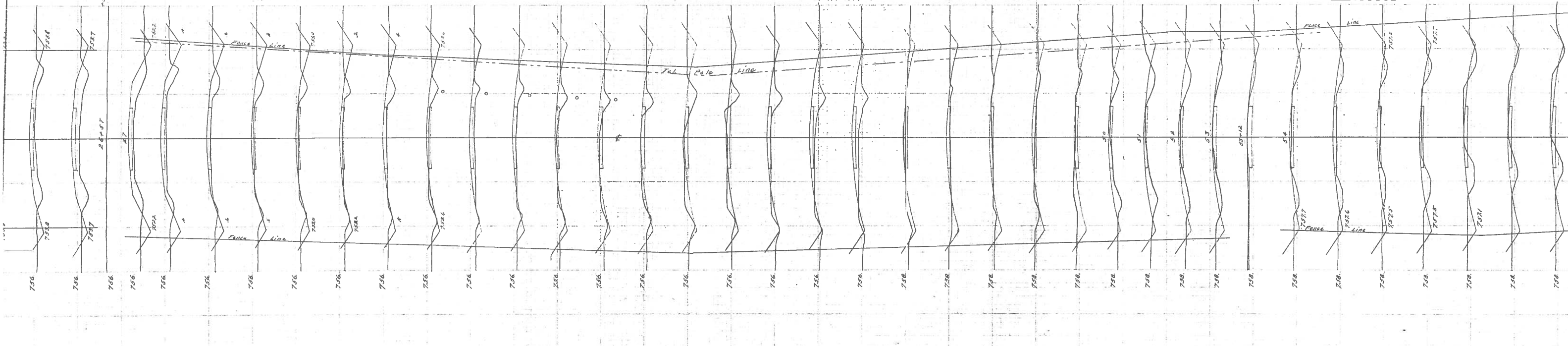
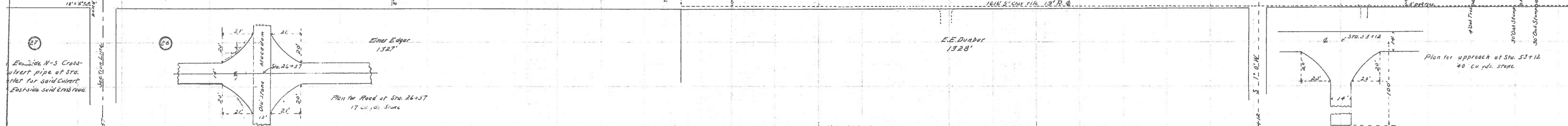
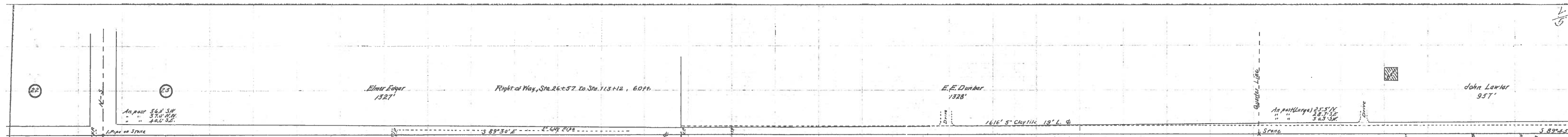
Scale: 1" = 1 mi.



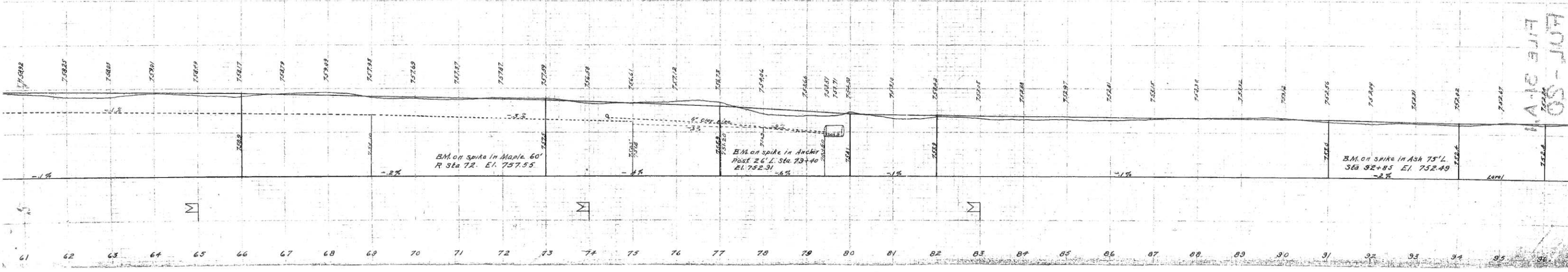
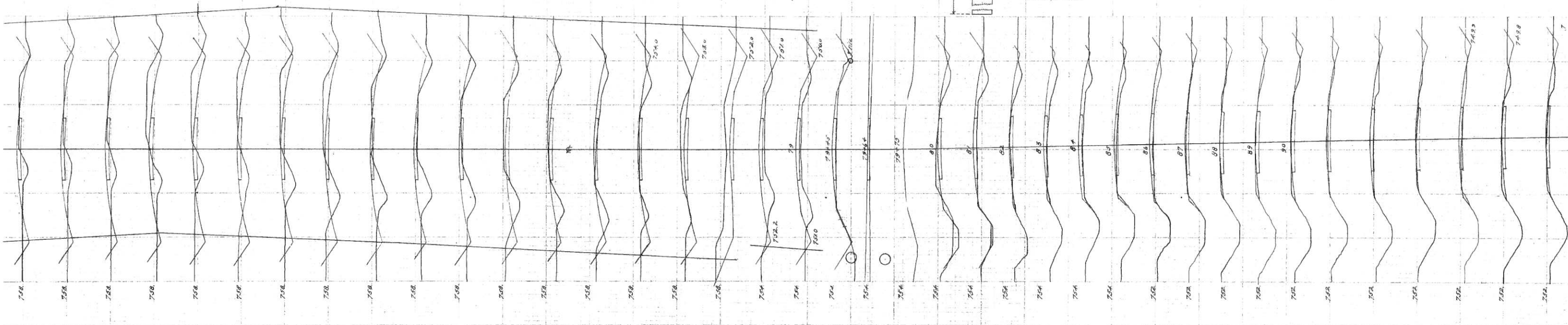
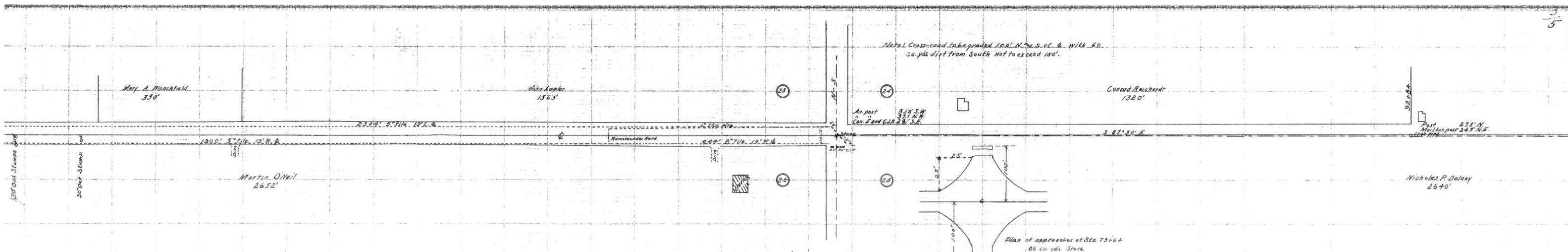
Note: Deepen to width of Road 60' South of 25+73 sufficient. All dirt to be placed on

CONSTRUCTION BUREAU
JUN 21 1955
GROUND PHOTOLAB

APPROVED: *Clinton Cousner*
State Highway Commissioner
Date: _____



B.M. on spike in Maple 30' N Sta. 26+57 El. 755.97
 B.M. on 100' Elm 33' R Sta. 33+60 El. 753.90
 B.M. on spike in Cotton Wood 28' R Sta. 39+85 El. 757.50
 B.M. on spike in Maple 26' L Sta. 48+60 El. 758.90
 B.M. on spike in Oak 30' R Sta. 53+60 El. 759.92

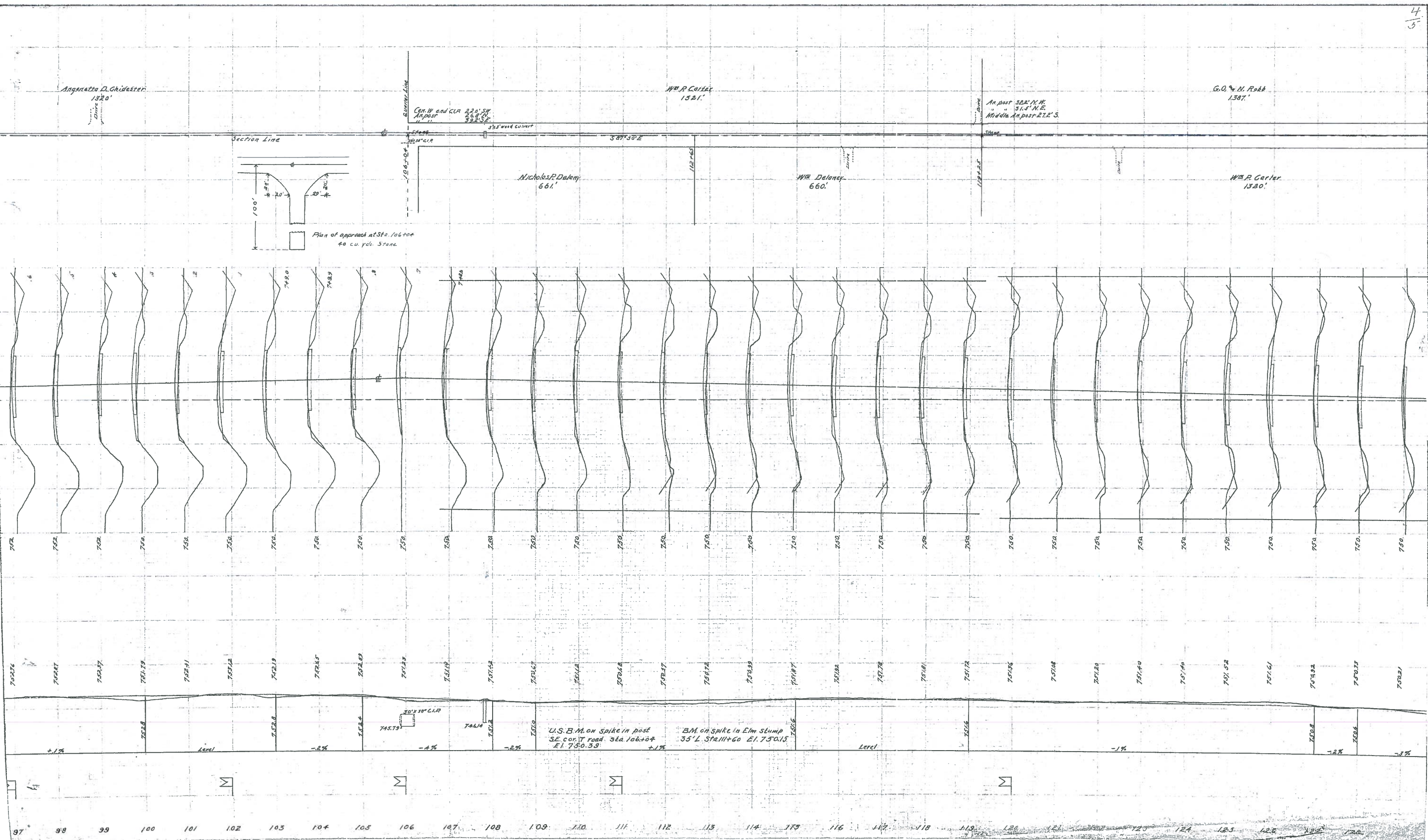


FOR SO
FILE 2101

B.M. on spike in Maple 60'
R Sta 72. El. 757.55

B.M. on spike in Anchor
Post 26' L. Sta. 73+40
El. 752.31

B.M. on spike in Ash 75' L.
Sta 82+85 El. 752.49



Angnotta D. Ghidester
1320'

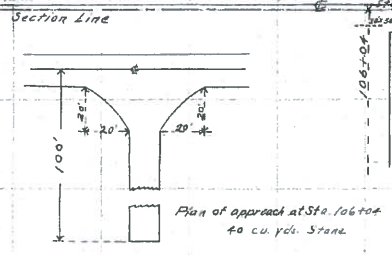
Wm. P. Carter
1521'

G.O. & M. Ross
1387'

Nicholas R. Daley
661'

Wm. Delaney
660'

Wm. P. Carter
1320'



U.S. B.M. on spike in post
SE cor. T road Sta. 106+04
E. 1750.39

B.M. on spike in Elm stump
35' L. Sta. 111+60
E. 1750.15

97 98 99 100 101 102 103 104 105 106 107 108 109 110 111 112 113 114 115 116 117 118 119 120 121 122 123 124 125 126

