

FED. RD. DIST. NO.	STATE	PROJECT	FISCAL YEAR
10	OHIO		1943

FULTON COUNTY  
S.H. 21 SEC. H, N & P (PT)

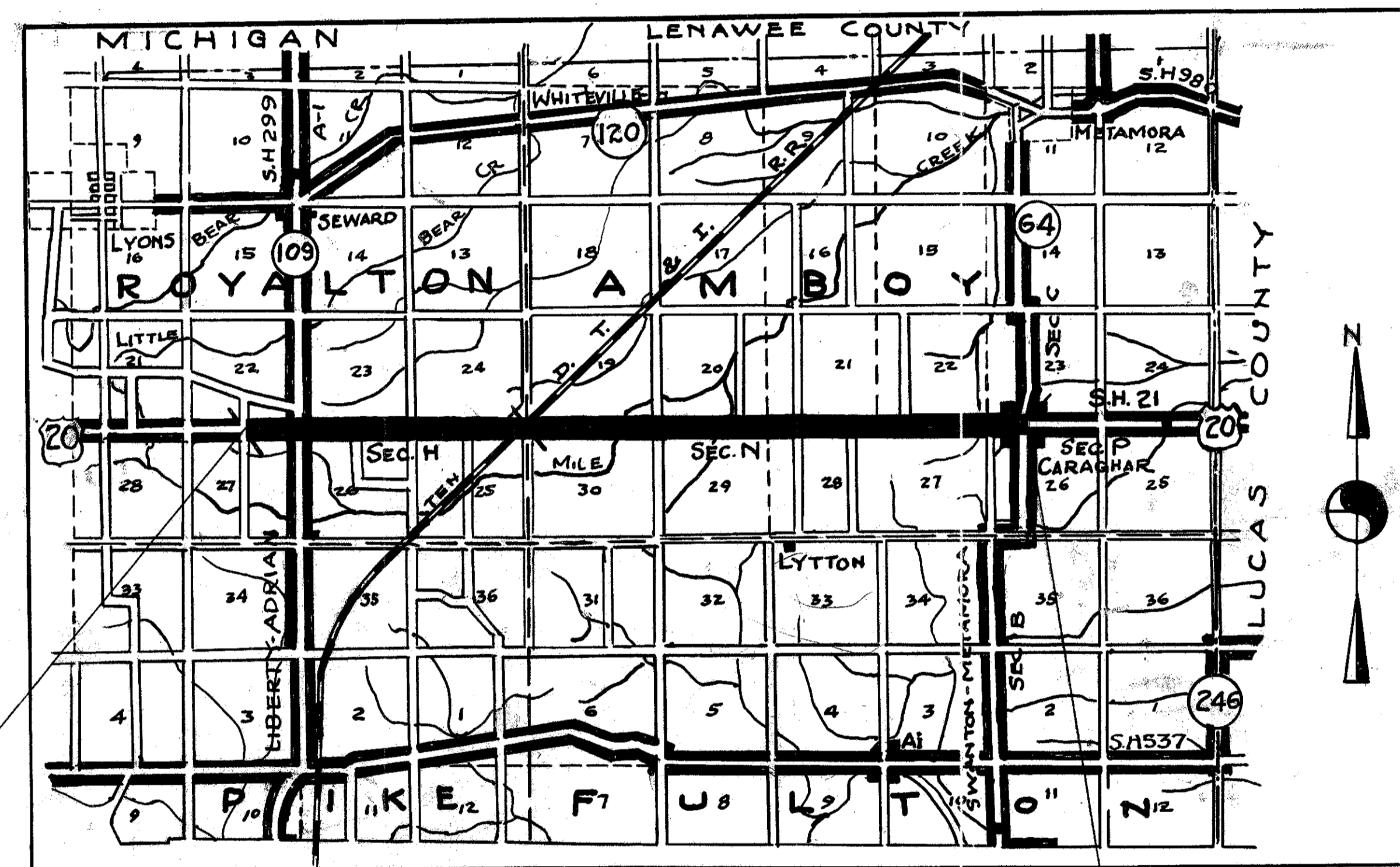
# STATE OF OHIO DEPARTMENT OF HIGHWAYS TOLEDO-ANGOLA ROAD S.H. 21, SEC. H, N & P (PT.) FULTON COUNTY ROYALTON AND AMBOY TOWNSHIPS

### CONVENTIONAL SIGNS

COUNTY LINE	-----
TOWNSHIP LINE	-----
SECTION LINE	-----
CORPORATION LINE	-----
PROPERTY LINE	-----
FENCE LINE	-----
CENTER LINE	-----
STEAM RAILROAD	-----
POLE LINE	-----
HEDGE	-----
DRAIN PIPE (NEW)	-----
DRAIN PIPE (OLD)	-----
GUARD RAIL (NEW)	-----

### INDEX OF SHEETS

TITLE SHEET	SHEET 1
TYPICAL SECTION & GENERAL NOTES	2
PLAN & PROFILE	3-15
CROSS SECTIONS	16-35
PRIV. DRIVES, ROAD APPROACHES	15
SUMMARY	36



AVERAGE HAUL ~ 9 MILES  
DELIVERY POINT ~ SWANTON, O.  
Begin Project Sta 0+00  
End Project Sta 367+56

### LINE DATA

Begin Project (on S.H. 21 Sec. H) ~ Sta 0+00  
End Project (on S.H. 21 Sec. P) ~ Sta 367+56.00  
Gross Length of Project = 36,756.00 Lin. Ft.  
Additions ~ None  
Deductions ~ For Short Station ~  
(Sta. 143+48.86 back = Sta. 144+00.00 ahead) = 51.14 Lin. Ft.  
Net Length of Project = 36,704.86 Lin. Ft. or 6.951 Miles.

### LOCATION PLAN

Scale 1"=1 Mile  
PORTION TO BE IMPROVED   
STATE HIGHWAYS   
OTHER ROADS

### SCALES

PLAN 1" = 100'  
PROFILE HORIZONTAL 1" = 100'  
PROFILE VERTICAL 1" = 5'  
CROSS SECTIONS 1" = 5'

The Standard Specifications of the State of Ohio Department of Highways including changes and Supplemental Specifications listed in the proposal shall govern this improvement.

I hereby approve these plans and declare that the making of this improvement will not require the closing to traffic of the highway and that provisions for the maintenance and safety of traffic shall be as set forth on the plans and estimates.

The right of way necessary for this improvement will be provided by the State of Ohio.

- Approved Date 3-9-43 Resident Division Deputy Director.
- Approved \_\_\_\_\_ Date \_\_\_\_\_ Chief Engineer, Bureau of Maintenance.
- Approved \_\_\_\_\_ Date \_\_\_\_\_ Chief Engineer, Bureau of Bridges & R.R. Crossings.
- Approved Date 3-26-43 Chief Engineer, Bureau of Location & Right of Way.
- Approved Date 3-26-43 First Asst. Director & Chief Engineer.
- Approved Date 4-26-43 Director of Highways.

FILE	FULTON COUNTY S.H. 21
	SEC. H, N & P (PT)
	DATE OF LETTING _____
	CONTRACT No. _____

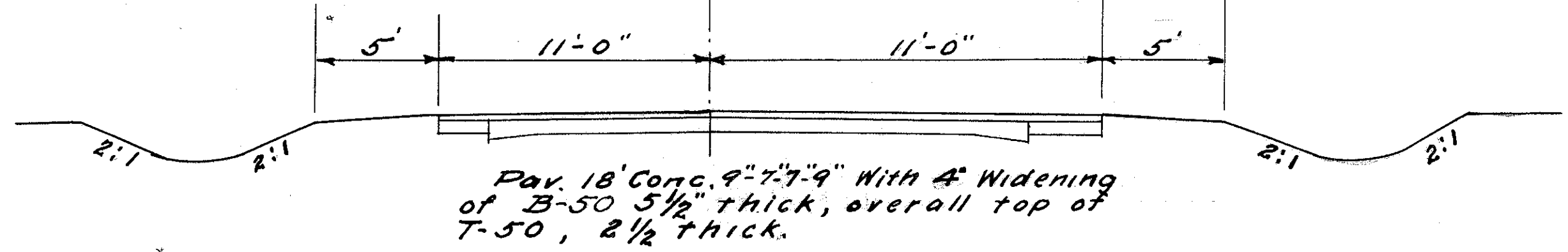
STANDARD DRAWINGS.	
E-5 No. 1	7-1-40
I-1, 2, 3, 4 & 5	3-1-39
I-8 C.B. 1-2A & B	3-10-42
G-707	6-1-42

SUPPLEMENTAL SPECIFICATIONS.	
None	

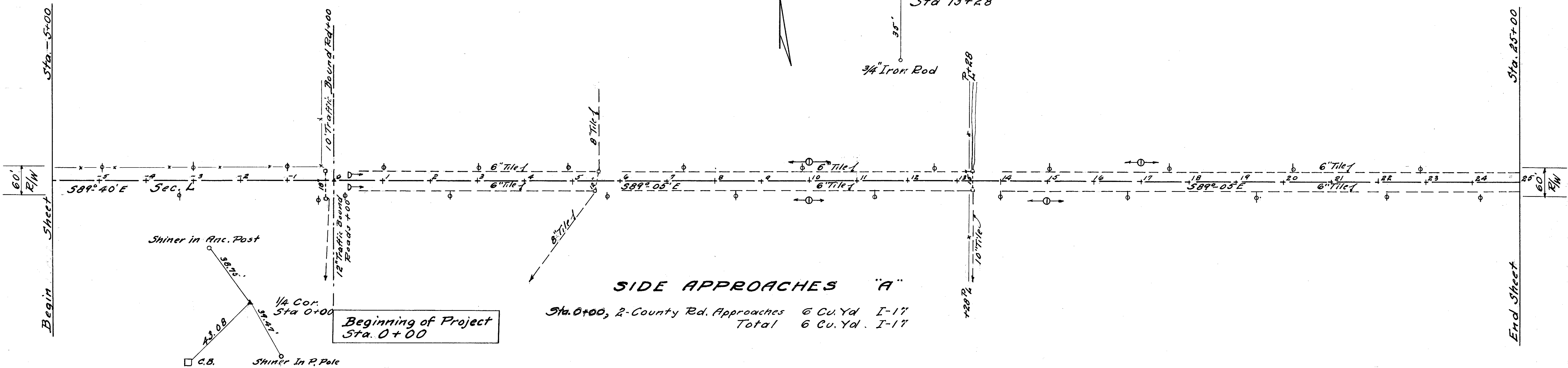
CONSTRUCTION BUREAU  
JUN 21 1955  
GROUND PHOTOLAB



TYPICAL SECTION  
 S.H. 21 SEC. L - ADJOINING PART



PAV. 18' CONC. 9" x 7" x 9" WITH 4" WIDENING OF B-50 5 1/2" THICK, OVERALL TOP OF T-50, 2 1/2" THICK.



SIDE APPROACHES "A"

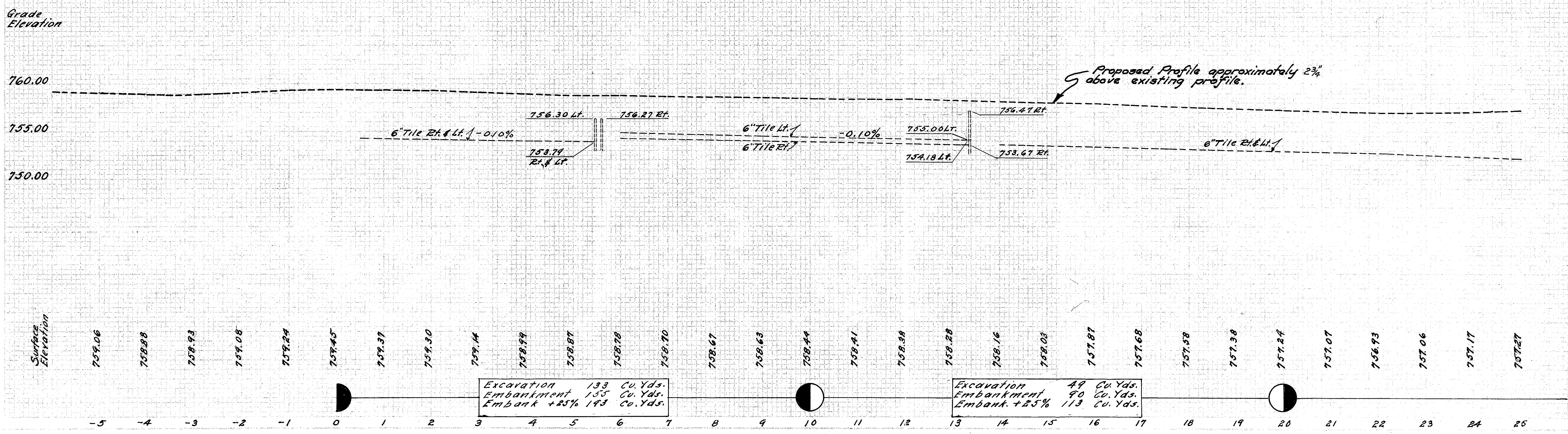
Sta. 0+00, 2-County Rd. Approaches 6 Cu. Yd. I-17  
 Total 6 Cu. Yd. I-17

B.M.#1 Sp. in T. Pole 65' Rt. Sta. 0+25 Elev. 758.24.

B.M.#2 Ctr. S. Wall on C.B. 25' Rt. Sta. 5+48 Elev. 756.91.

B.M.#3 Ctr. S. Wall on C.B. 25' Rt. Sta. 13+37 Elev. 757.11.

B.M.#4 Sp. in Pole 28' Rt. Sta. 19+50 Elev. 757.89.



Excavation 133 Cu. Yds.  
 Embankment 155 Cu. Yds.  
 Embank. +25% 143 Cu. Yds.

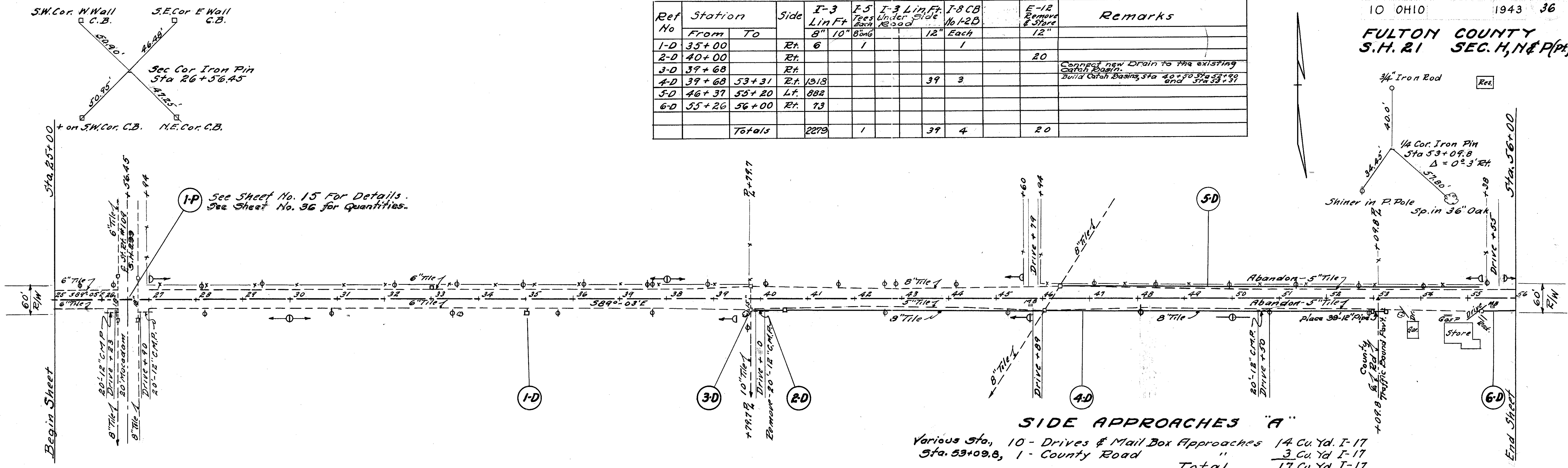
Excavation 49 Cu. Yds.  
 Embankment 90 Cu. Yds.  
 Embank. +25% 113 Cu. Yds.



### ROADWAY DRAINAGE "D"

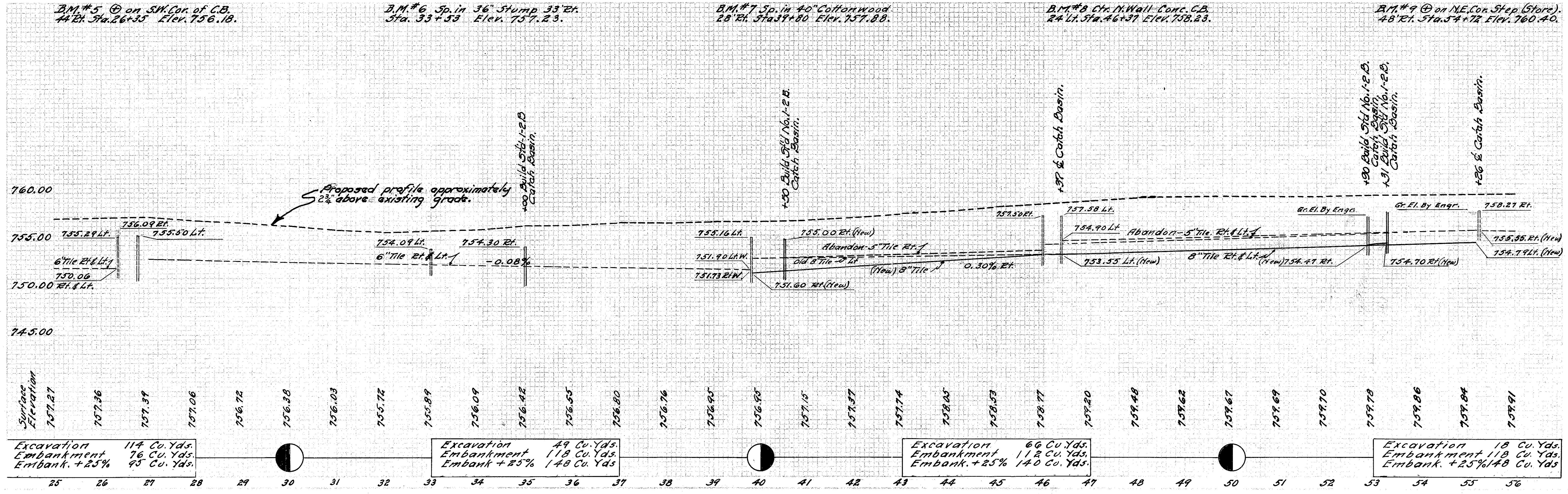
Ref No	Station		Side	I-3 Lin Ft 8" 10"	I-5 Tees Each 8" 10"	I-3 Lin Ft Under Side 12" 10"	I-8 CB No 1-2B Each	E-12 Remove & Store 12"	Remarks
	From	To							
1-D	35+00		Rt.	6	1		1		
2-D	40+00		Rt.					20	
3-D	39+68		Rt.						Connect new Drain to the existing Catch Basin.
4-D	39+68	53+31	Rt.	1318			39	3	Build Catch Basins Sta 40+50 Sta 53+99 and Sta 53+31
5-D	46+37	55+20	Lt.	882					
6-D	55+26	56+00	Rt.	73					
Totals				2279	1		39	4	20

10 OHIO 1943 4 36  
**FULTON COUNTY**  
**S.H. 21 SEC. H, N & P (Pt)**



**SIDE APPROACHES "A"**

Various Sta., 10 - Drives & Mail Box Approaches	14 Cu. Yd. I-17
Sta. 53+09.8, 1 - County Road	3 Cu. Yd. I-17
<b>Total</b>	<b>17 Cu. Yd. I-17</b>

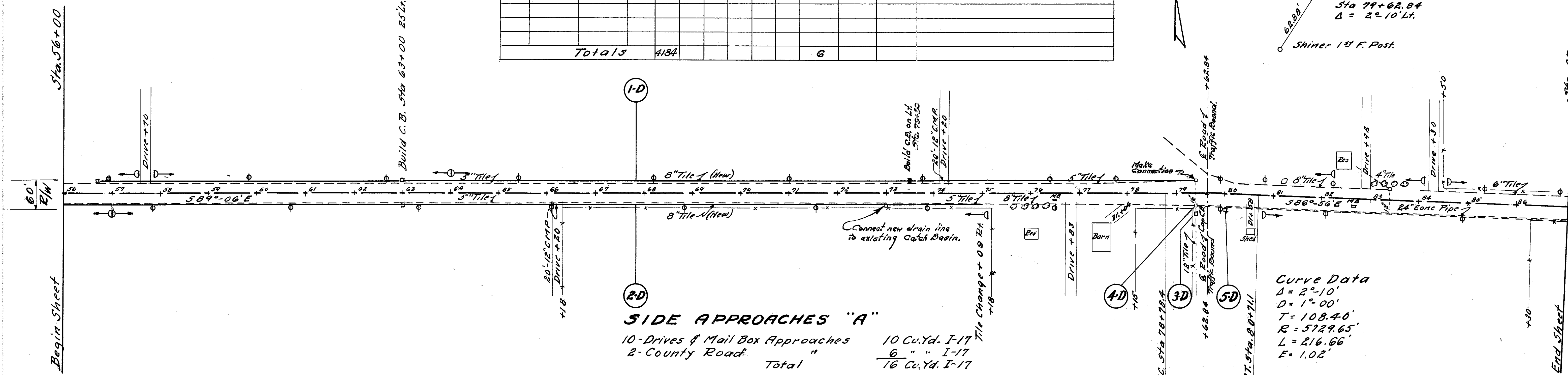




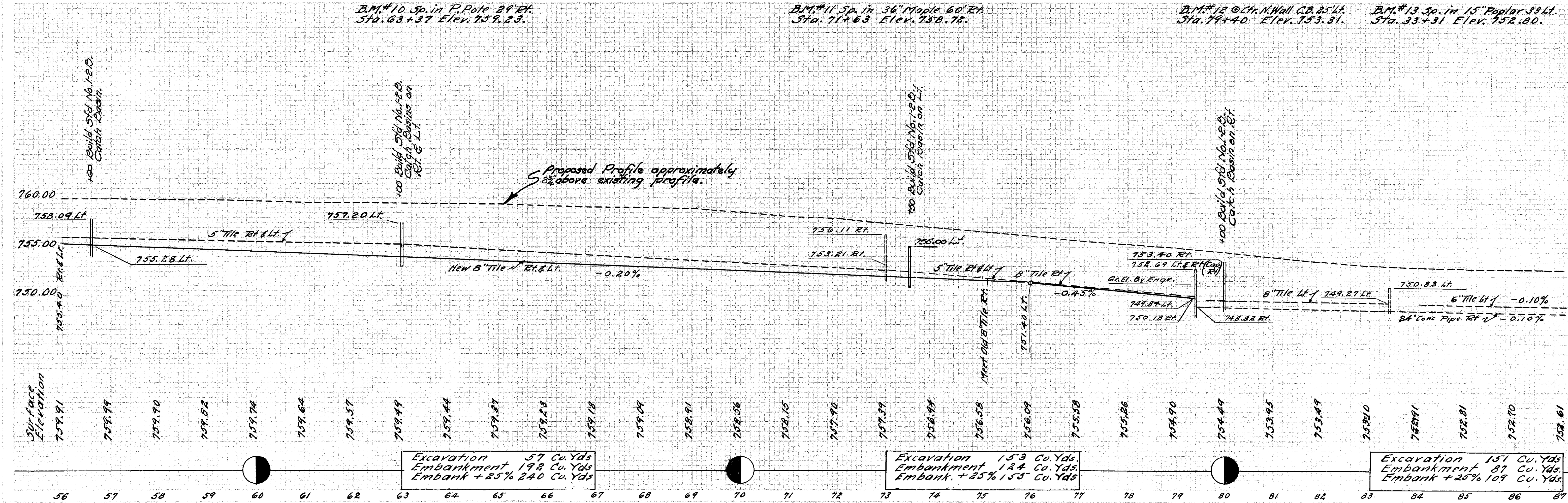
### ROADWAY DRAINAGE "D"

Ref. No.	Station		Side	I-3 Lin. Ft.	I-8CB No. 1-2b Each	Remarks
	From	To				
1-D	56+60	79+41	Lt.	2275	3	Build No 1-2b C.B. Sta 56+60 & 63+00 & 79+40
2-D	56+00	75+09	Rt.	1905	1	Build No. 1-2b C.B. Sta. 63+00. Make conn. Sta. 79+40
3-D	79+41		Rt.		1	Construct On Existing 12" Pipe.
4-D	79+41		Rt.			Existing Catch Basin on Rt. to be repaired and capped by State M & R Forces.
5-D	80+00		Rt.	4	1	Make Connection To Existing 24" Pipe.
Totals				4184	6	

10 OHIO 1943 36  
**FULTON COUNTY**  
**S.H. 21 - SEC. H, N & P (Pt)**



**Curve Data**  
 $\Delta = 2^{\circ}10'$   
 $D = 1^{\circ}00'$   
 $T = 108.40'$   
 $R = 5729.65'$   
 $L = 216.66'$   
 $E = 1.02'$



B.M.#10 Sp. in P. Pole 24' Ht. Sta. 63+37 Elev. 759.23.      B.M.#11 Sp. in 36" Maple 60' Ht. Sta. 71+63 Elev. 758.78.      B.M.#12 @ Ctr. N. Wall C.B. 25' Ht. Sta. 79+40 Elev. 753.31.      B.M.#13 Sp. in 15" Poplar 33' Ht. Sta. 33+31 Elev. 752.80.

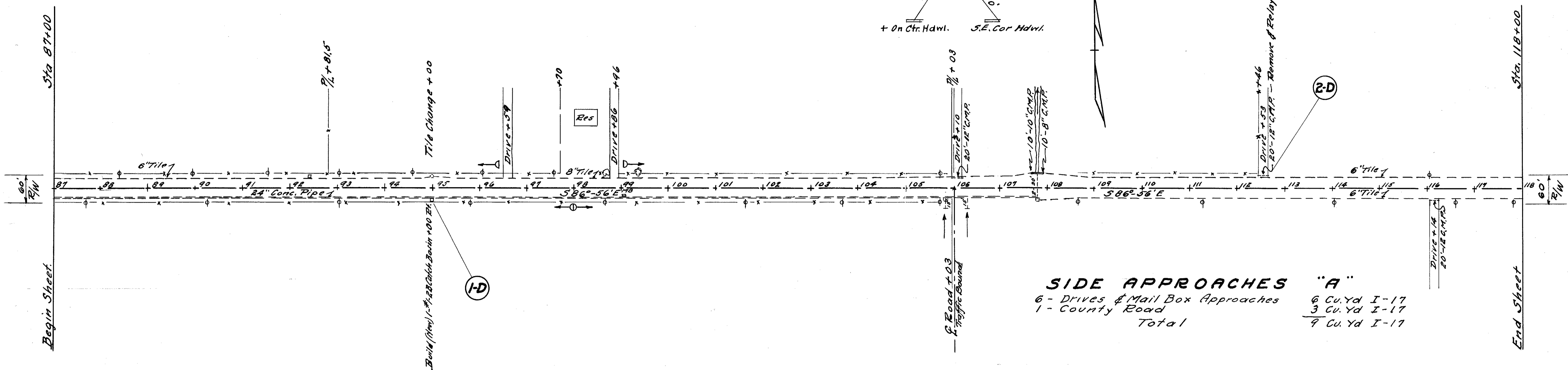


# ROADWAY DRAINAGE "D"

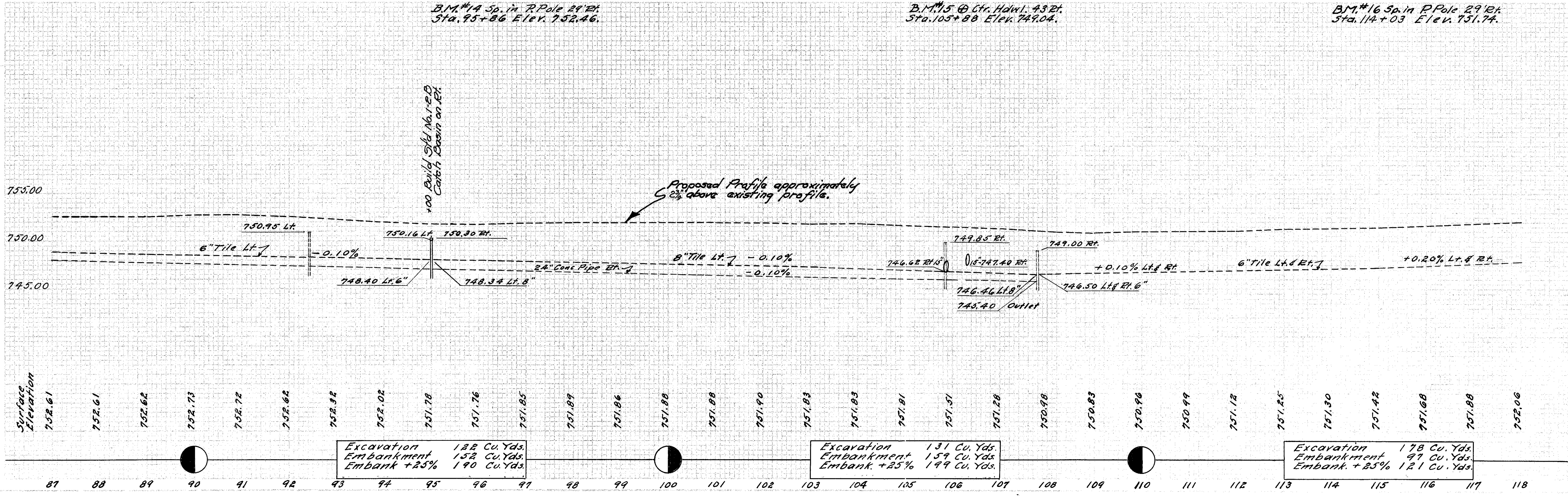
10 OHIO 1943 36

FULTON COUNTY  
S.H. 21 SEC. H, N & P (A)

Ref No	Station		Side	I-3 Lin. Ft.			I-8CB No 1-2B Each	E-12 Remove for Reuse 12" 12"	I-6 Pipe Relined for Drive 12" 12"	Remarks
	From	To		8"	10"	12"				
1-D	95+00		Rt.	6			1			Make Con. To Exist. 24" Pipe
2-D	112+53		Lt.					20	20	Driveway
Totals				6			1	20	20	



**SIDE APPROACHES "A"**  
 6 - Drives & Mail Box Approaches  
 1 - County Road  
**Total**  
 6 Cu. Yd I-17  
 3 Cu. Yd I-17  
 9 Cu. Yd I-17

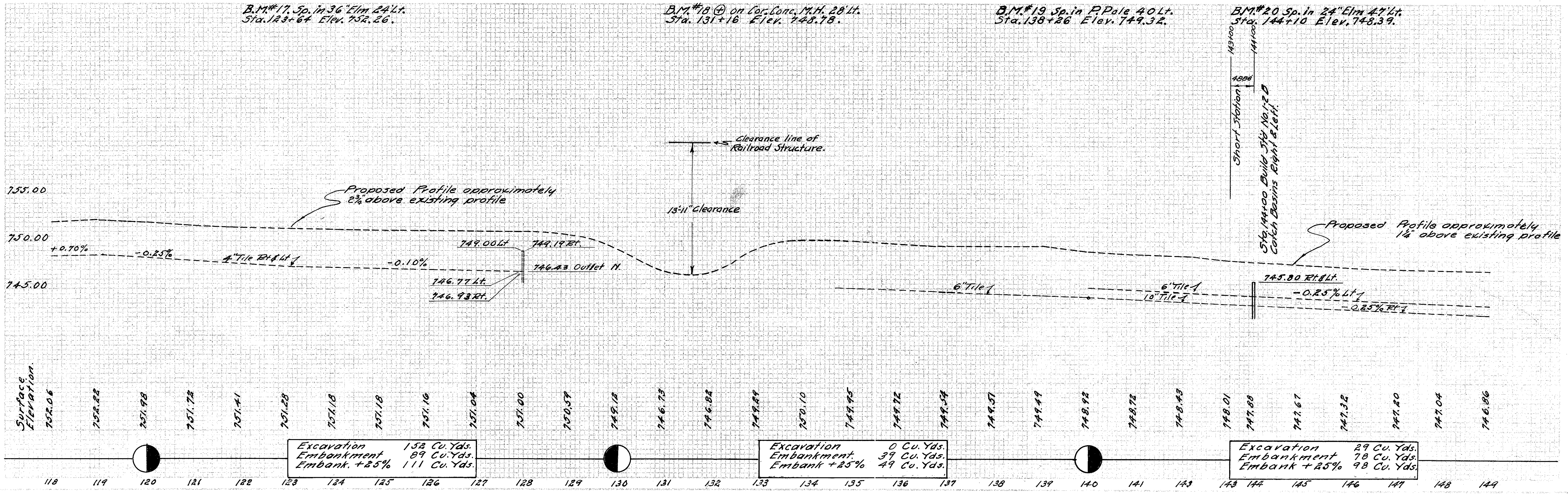
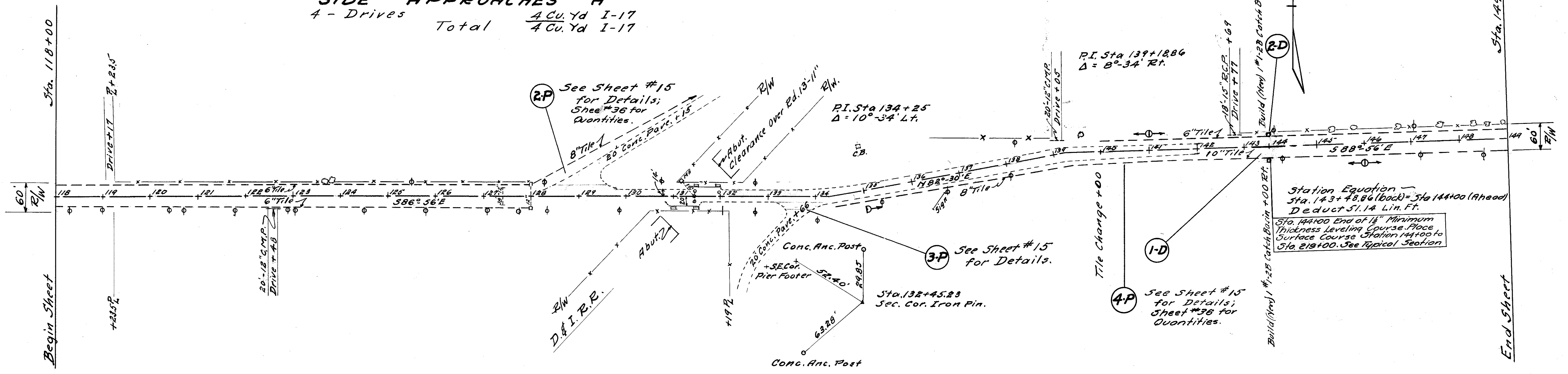




**ROADWAY DRAINAGE "D"**

Ref. No.	Station		Side	I-3 Lin. Ft.	I-8 CB No. 12B	I-5 Tees Each	I-5 Tees Each	I-5 Tees Each	Remarks
	From	To							
1-D	144+00		Rt.	6		1	1		Connect To Exist. 10" Pipe.
2-D	144+00		Lt.	6		1	1		Connect To Exist. 8" Pipe.
Total				12		2	1	1	

**SIDE APPROACHES "A"**  
 4 - Drives Total 4 Cu. Yd I-17  
 4 Cu. Yd I-17





**ROADWAY DRAINAGE "D"**

Ref. No.	Station		Side	E-12 Remove for Re-use 12' Lin. Ft.	I-6 Relay for Drive 12' Lin. Ft.	Remarks
	From	to				
I-D	170+56		Rt.	20	20	Drive
Total				20	20	

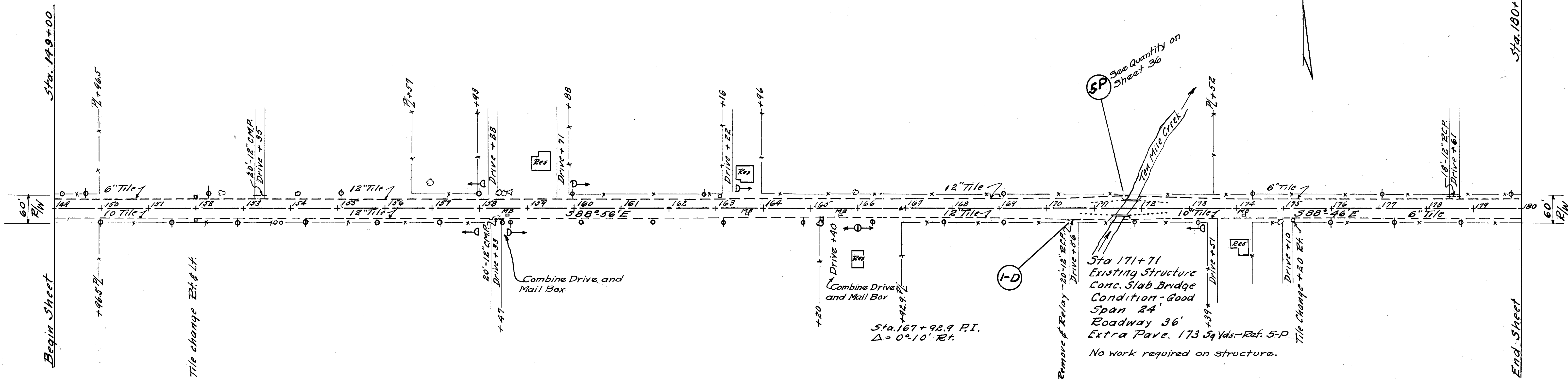
FOR ANY QUESTIONS PLEASE CONTACT ODOT DIST. 2 REAL ESTATE AT 419-353-8131

**SIDE APPROACHES "A"**

12-Drive & Mail Box Approaches 12 Cu. Yds. I-17  
Total 12 Cu. Yds. I-17

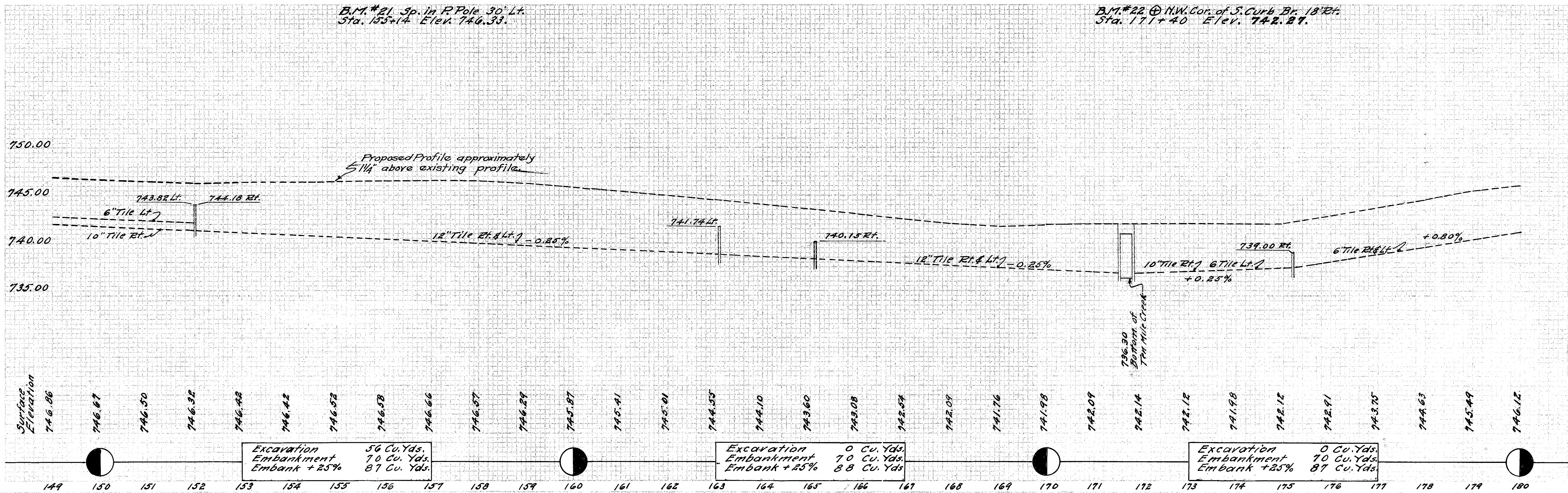
10 OHIO 1943 36

FULTON COUNTY  
S.H. 21 SEC. H, N & P (Pt.)



B.M. #21 Sp. in P. Pole 30' Lt.  
Sta. 155+14 Elev. 746.33.

B.M. #22 @ N.W. Cor. of S. Curb Br. 18' Rt.  
Sta. 171+40 Elev. 742.27.





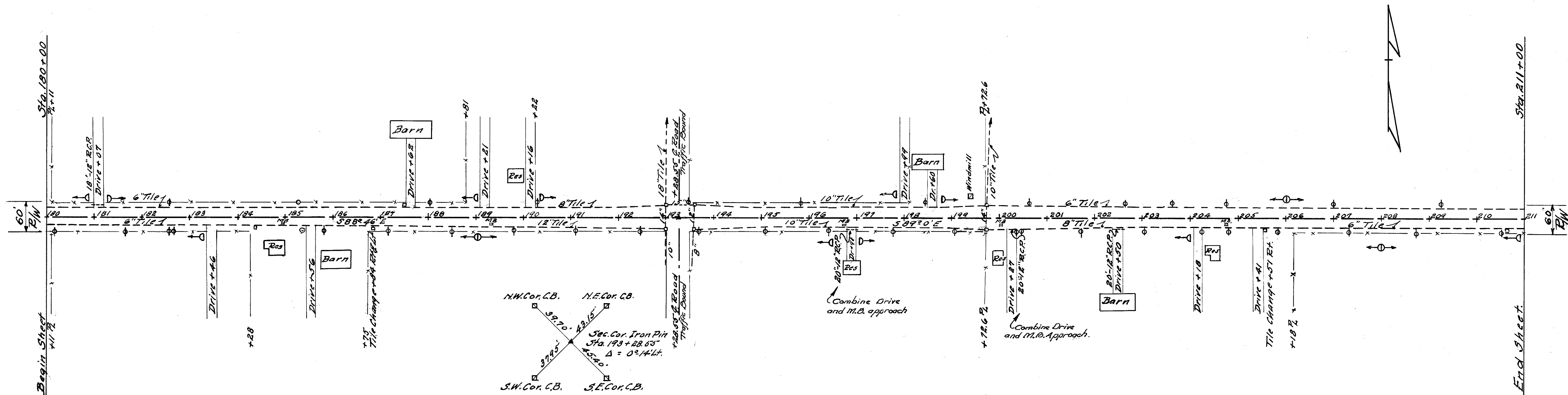
# SIDE APPROACHES "A"

15-Drive & Mail Box Approaches  
County Road " " Total

18 Cu. Yds. I-17  
6 Cu. Yds. I-17  
24 Cu. Yds. I-17

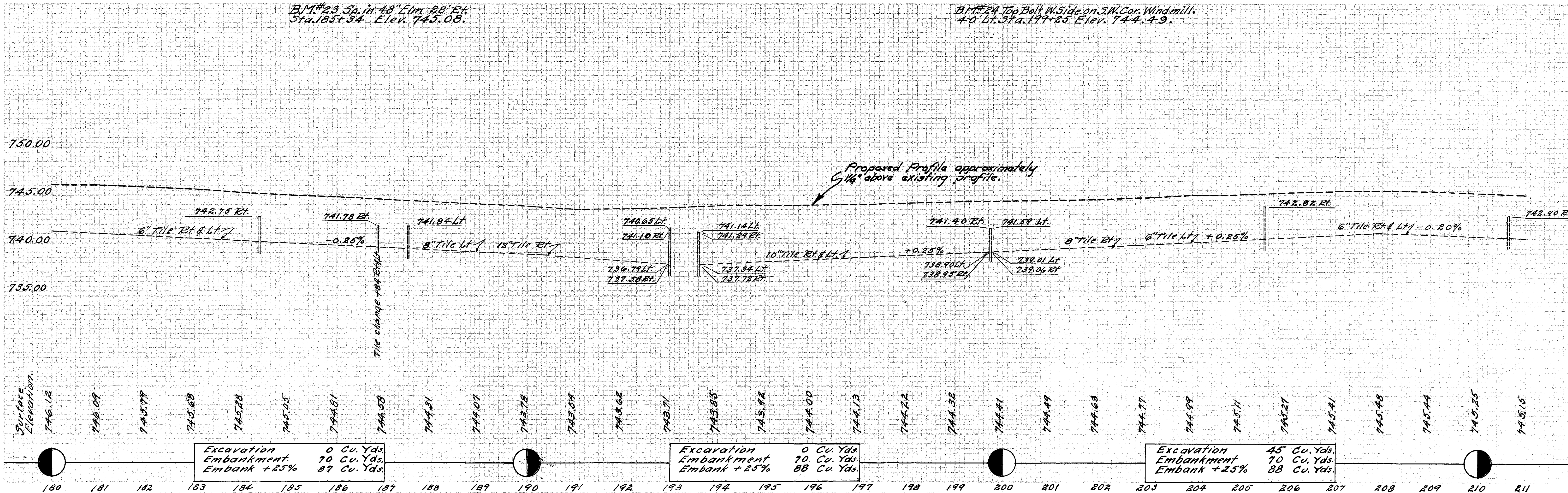
SEE NO.	DATE	BY	REVISION
10	OHIO		1943 36

**FULTON COUNTY**  
S.H. RI SEC. H. & P. (Pt.)



BM#23 Sp. in 48" Elm 28' Et.  
Sta. 185+34 Elev. 745.08.

BM#24 Top Bolt W. Side on S.W. Cor. Windmill.  
40' Lt. Sta. 199+25 Elev. 744.49.



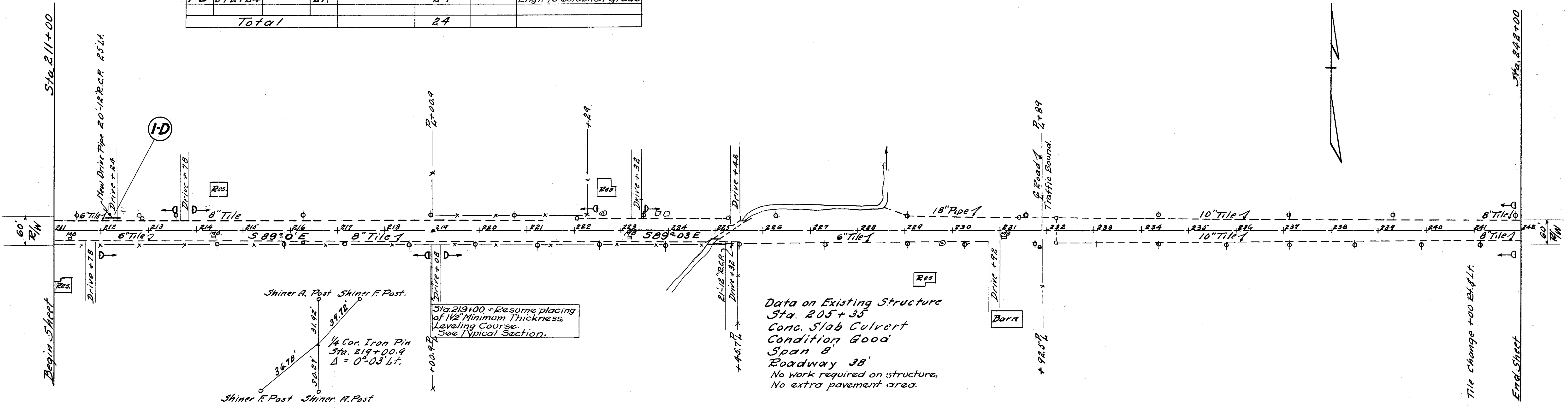


**ROADWAY DRAINAGE "D"**

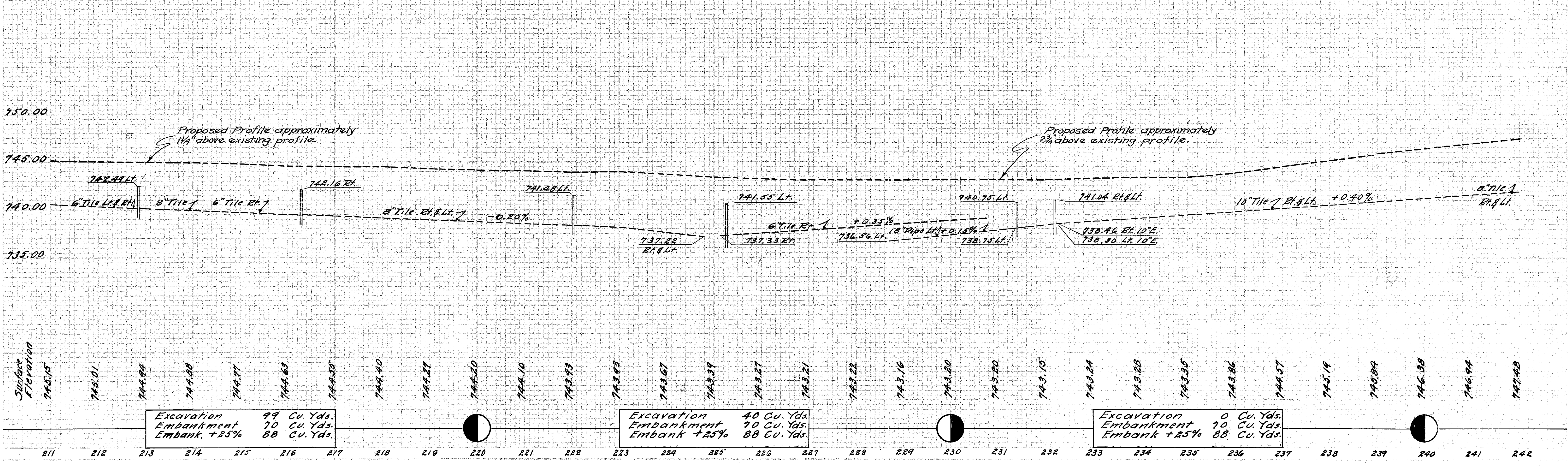
Ref No	Station From	Station To	Side	I-1 Lin. Ft.	Remarks
I-D	212+24		Lt.	24	Eng'r to establish grade
<b>Total</b>				<b>24</b>	

**SIDE APPROACHES "A"**

12-Drive & Mail Box Approaches	12 Cu.Yds I-17
1 County Road	3 Cu.Yds I-17
<b>Total</b>	<b>15 Cu.Yds I-17</b>



B.M.#24A Sp. in 15" Poplar 4.5 Lt. Sta. 214+92 Elev. 744.80.  
 B.M.#25 Sp. in 12" Hickory 5.7 Lt. Sta. 217+83 Elev. 744.60.  
 B.M.#26 on E. end N. Wall Cuv. 20 Lt. Sta. 225+88 Elev. 743.13.  
 B.M.#27 Bent Sp. in 2nd F. Post 7.7 Rt. Sta. 231+90 Elev. 742.58.





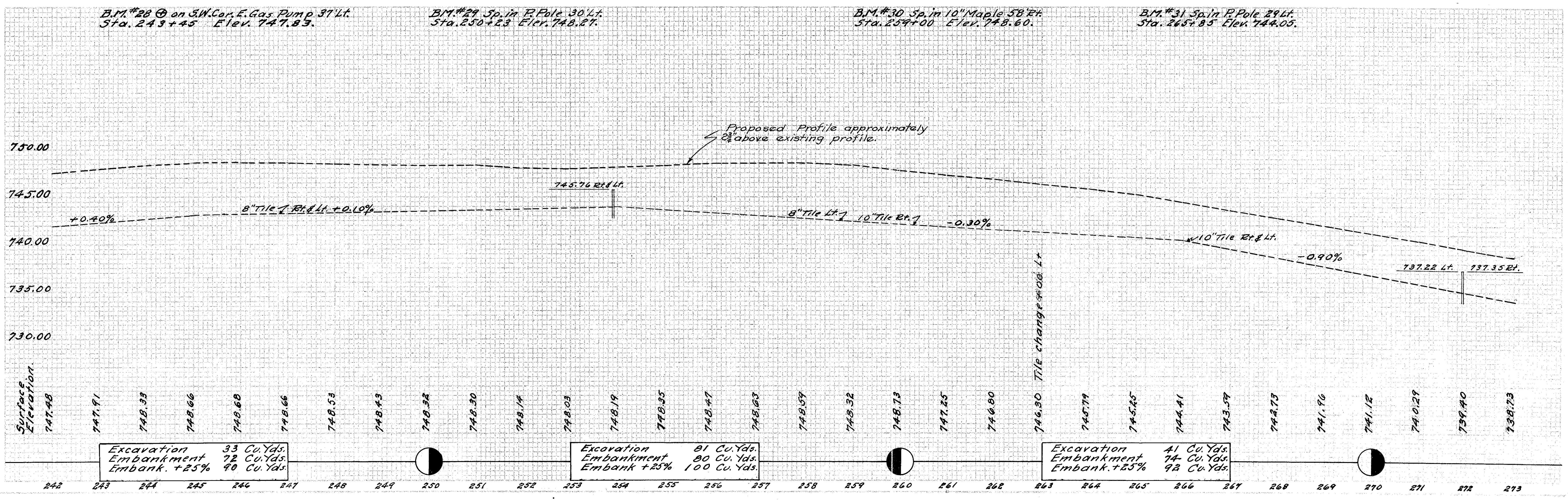
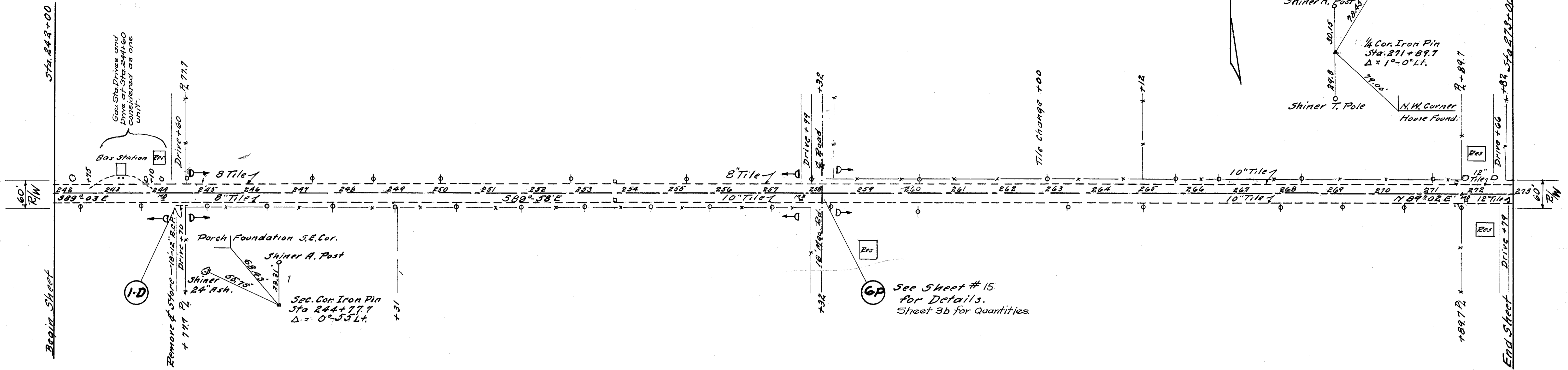
**ROADWAY DRAINAGE "D"**

Ref. No.	Station		Side	E-12 Remove & Store Lim. Ft.		Remarks
	From	To		12"	18"	
I-D	244+70		Rt.			Drive Pipe not required.
<b>Total</b>				18		

**SIDE APPROACHES "A"**

7 - Drive & Mail Box Approaches	11 Cu. Yds. I-17
1 - County Road	3 Cu. Yds. I-17
<b>Total</b>	<b>14 Cu. Yds. I-17</b>

FULTON COUNTY  
S.H.R.I SEC. H, N & P (Pt.)





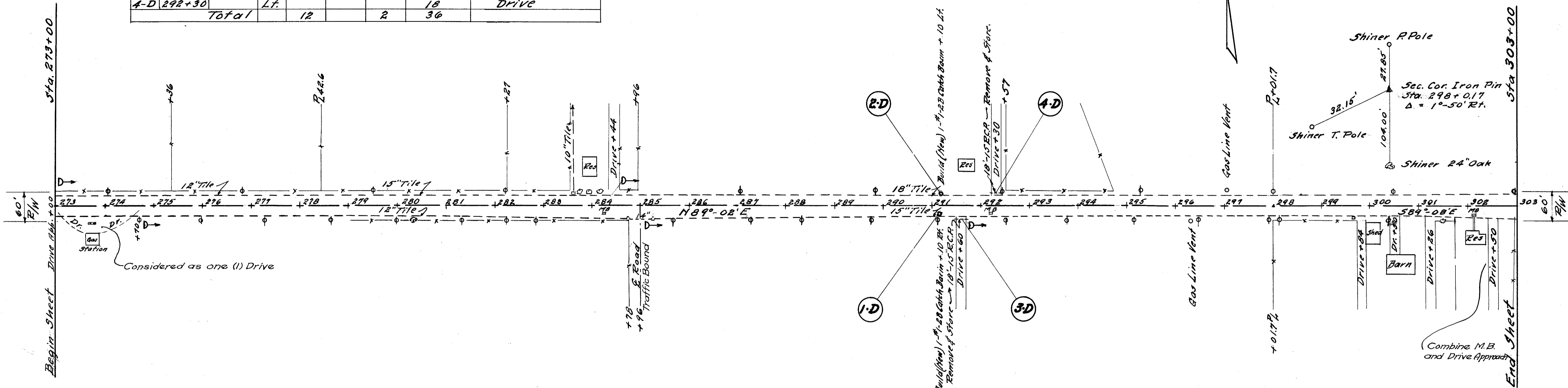
ROADWAY DRAINAGE "D"

Ref. No.	Station		Side	I-3	I-8 C.B.	F-12	Remarks
	From	To		Lin. Ft.	No. 1-28	Remove & Store Lin. Ft.	
1-D	291+10		Rt.	6	1	15"	Connect To Exist. 15" Pipe
2-D	291+10		Lt.	6	1		Connect To Exist. 18" Pipe
3-D	291+60		Rt.			18	DRIVE
4-D	292+30		Lt.			18	DRIVE
Total				12	2	36	

SIDE APPROACHES "A"

10 - Drive & Mail Box Approaches  
1 - County Road  
Total

14 Cu. Yds. I-17  
3 " " I-17  
17 Cu. Yds. I-17



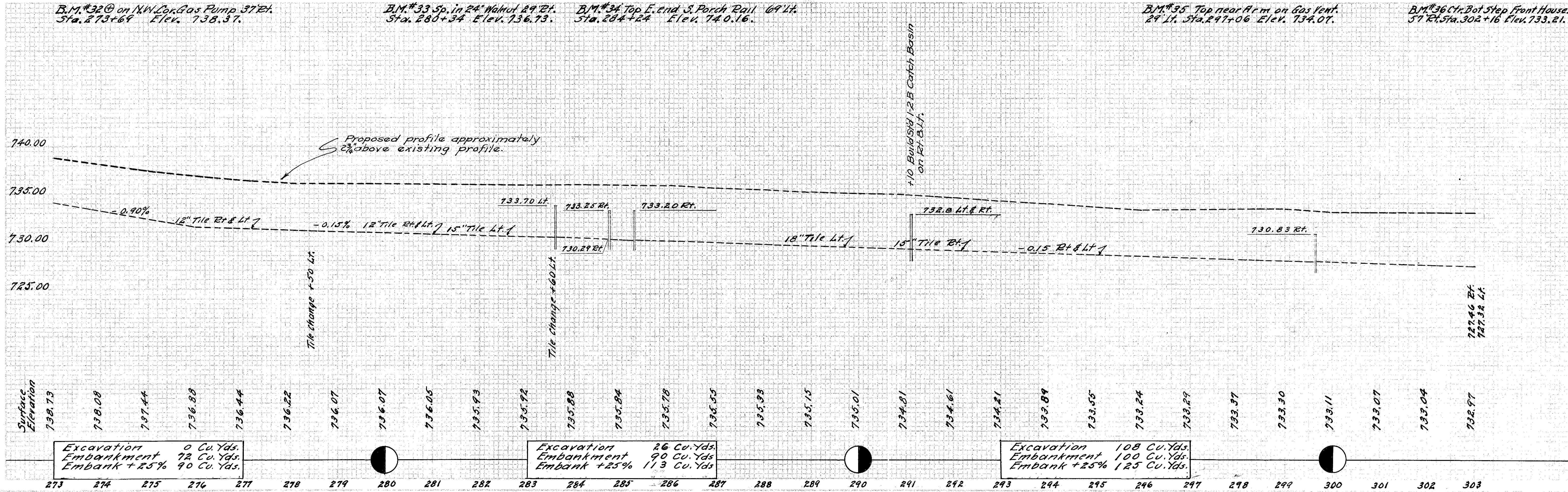
B.M. #32 @ on N.W. Cor. Gas Pump 37' Rt.  
Sta. 273+69 Elev. 738.37.

B.M. #33 Sp. in 24" Walnut 29' Rt.  
Sta. 280+34 Elev. 736.73.

B.M. #34 Top E. end S. Porch Rail 69' Lt.  
Sta. 284+24 Elev. 740.16.

B.M. #35 Top near Arm on Gas Vent.  
29' Lt. Sta. 297+06 Elev. 734.07.

B.M. #36 Ctr. Bot Step Front House.  
57' Rt. Sta. 302+16 Elev. 733.21.





**ROADWAY DRAINAGE "D"**

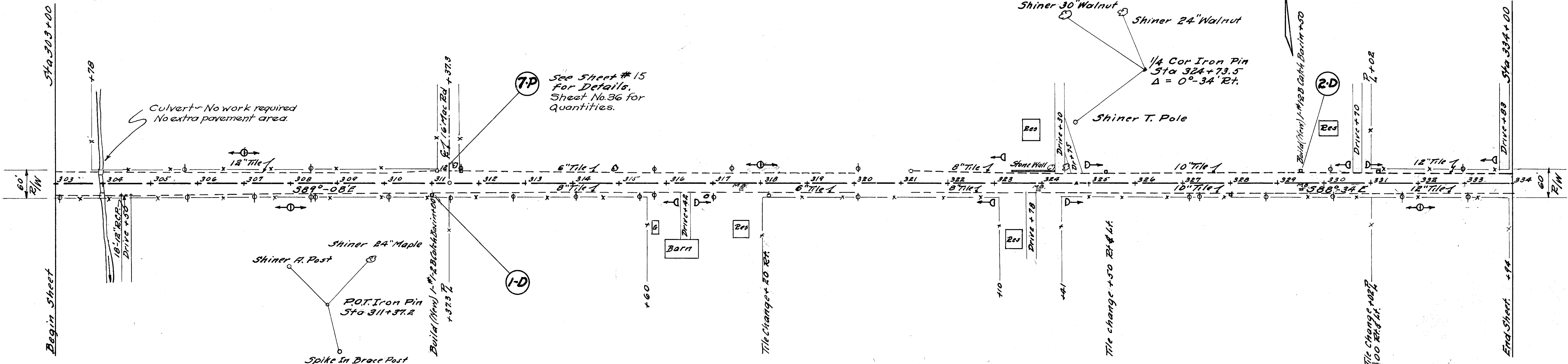
Ref. No.	Station		Side	I-3 Lim. Ft.	I-8CB No. 1-2B Each	I-5 18x5 Each	Remarks
	From	To					
1-D	311+00		Rt.	6"	1	1	Connect To Exit 8" Pipe
2-D	329+50		Lt.	6"	1	1	Connect To Exit 10" Pipe
Total				12	2	1	1

**SIDE APPROACHES**

10-Drive & Mail Box Approaches  
 Total

**"A"**

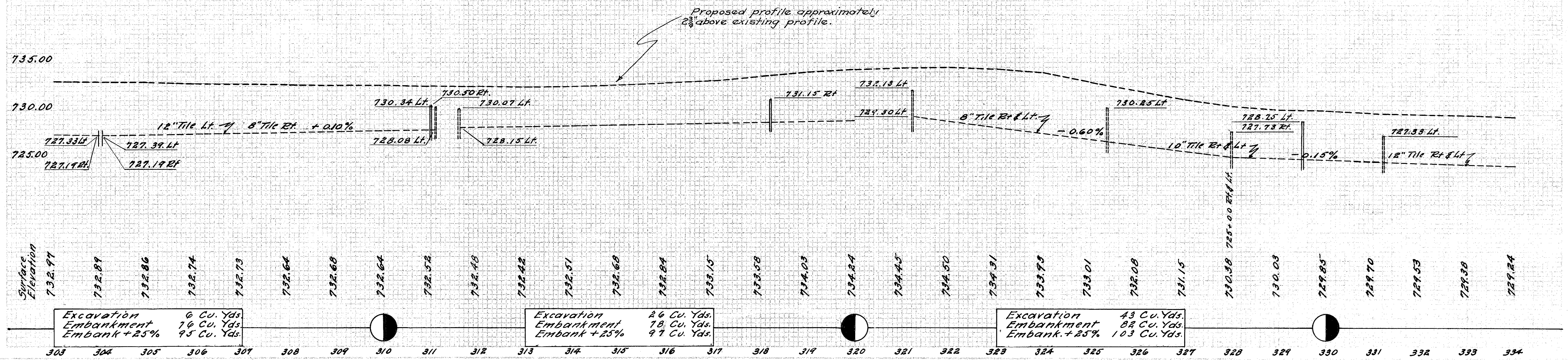
10 Cu. Yd. I-17  
 10 Cu. Yd. I-17



B.M.#37 Bent Sp. in A. Post 32' Rt.  
 Sta. 311+37 Elev. 733.29.

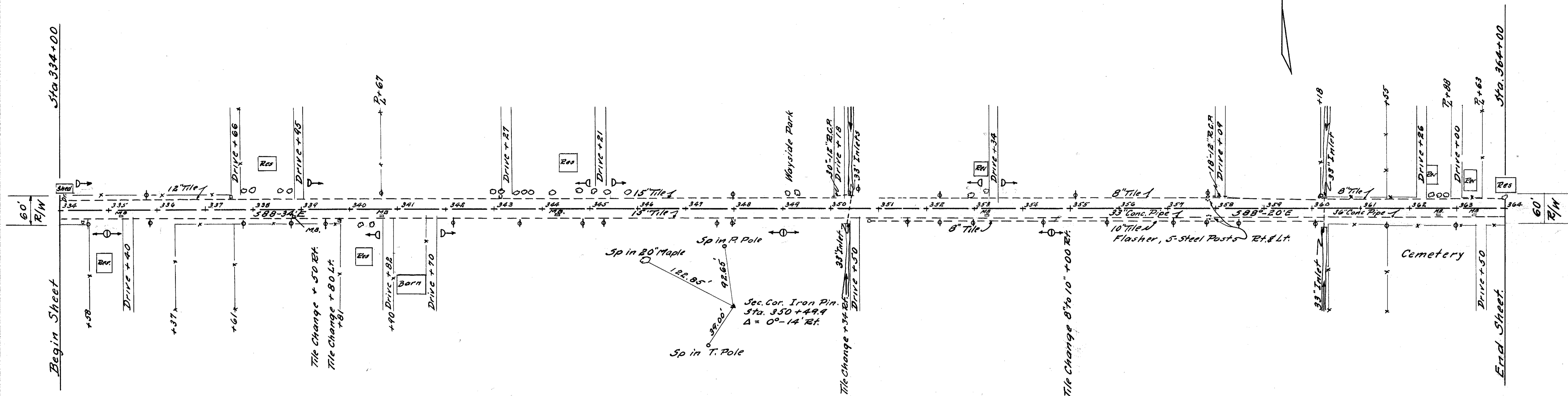
B.M.#38 Bent Sp. in Brace Pole 26' Rt.  
 Sta. 320+10 Elev. 734.33.

B.M.#39 Sp. Brace Pole 26' Rt.  
 Sta. 327+37 Elev. 729.76.





**SIDE APPROACHES "A"**  
 22- Drive & Mail Box Approaches 22 Cu.Yd. I-17  
 Total 22 Cu.Yd. I-17  
 (Includes Drive and Mail Box Approach on Sheet 15)



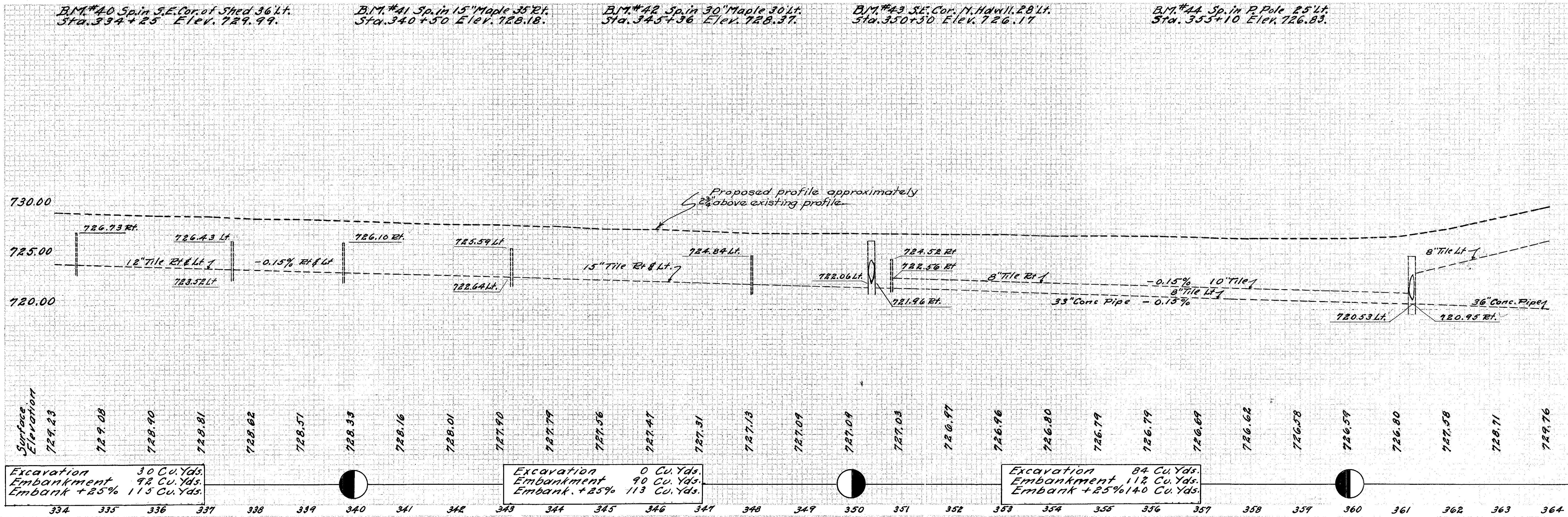
B.M. #40 Sp. in S.E. Cor. of Shed 36 Lt.  
 Sta. 334+25 Elev. 729.99.

B.M. #41 Sp. in 15" Maple 35 Rt.  
 Sta. 340+50 Elev. 728.18.

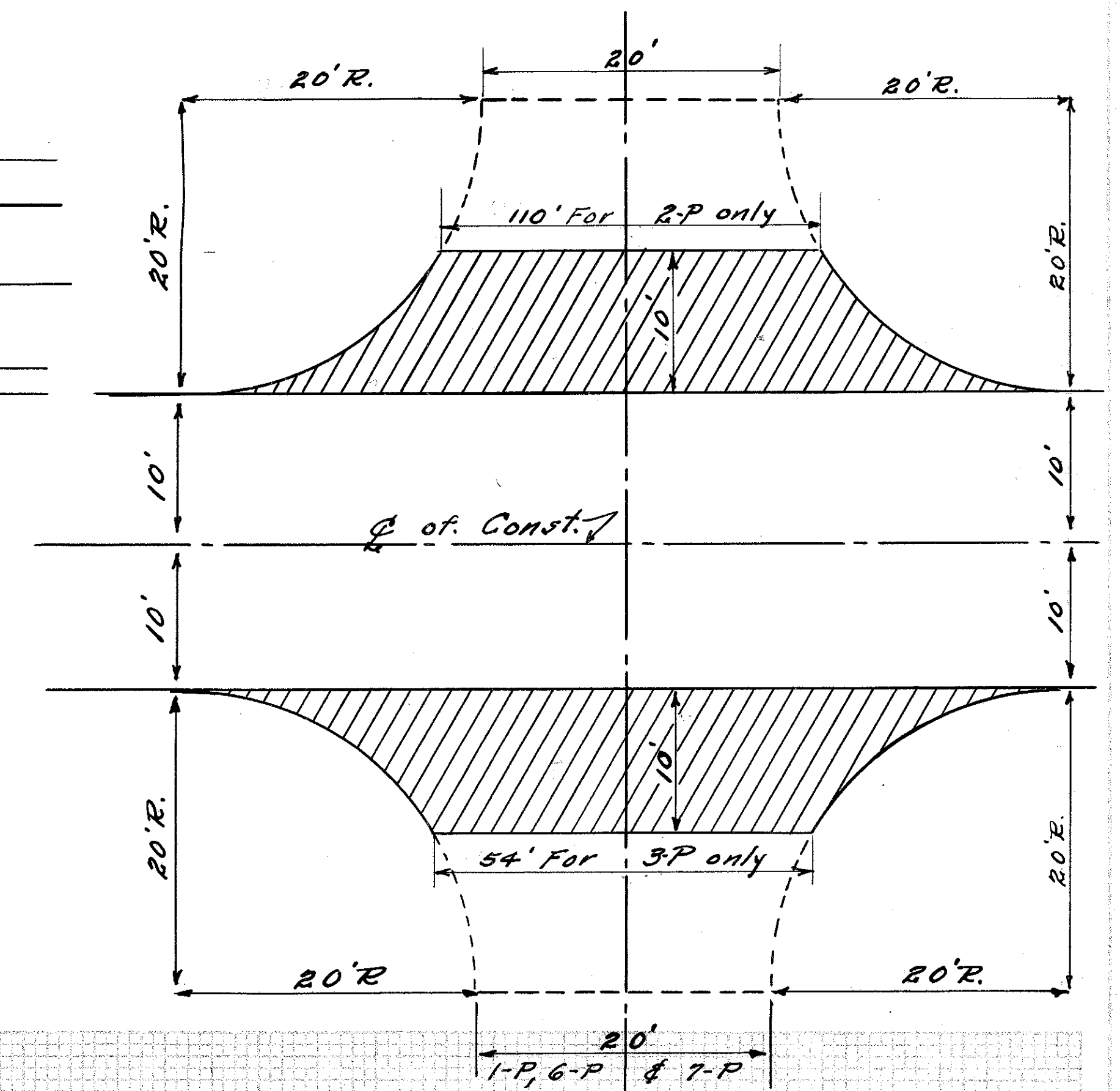
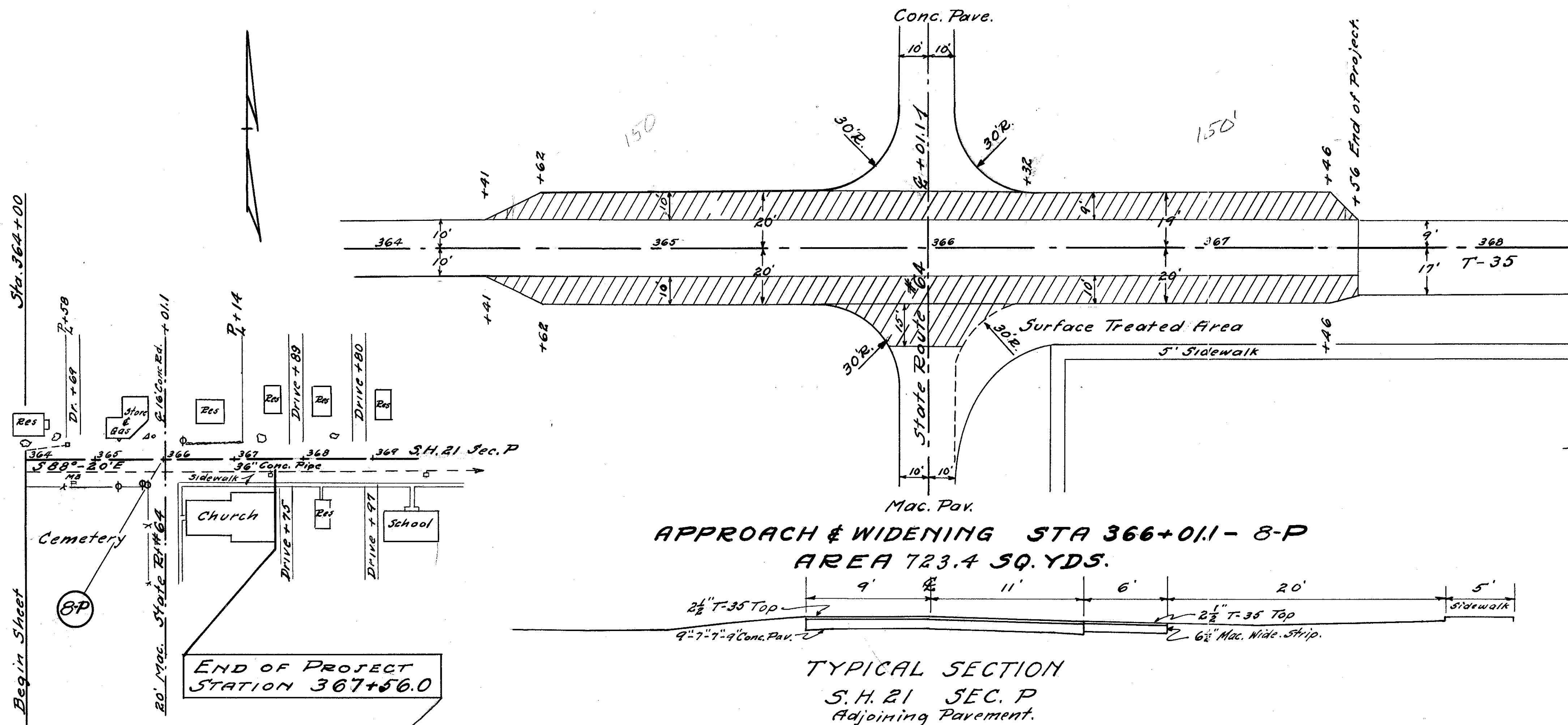
B.M. #42 Sp. in 30" Maple 30 Lt.  
 Sta. 345+36 Elev. 728.37.

B.M. #43 S.E. Cor. of H. Hall 28 Lt.  
 Sta. 350+30 Elev. 726.17

B.M. #44 Sp. in P. Pole 25 Lt.  
 Sta. 353+10 Elev. 726.83.

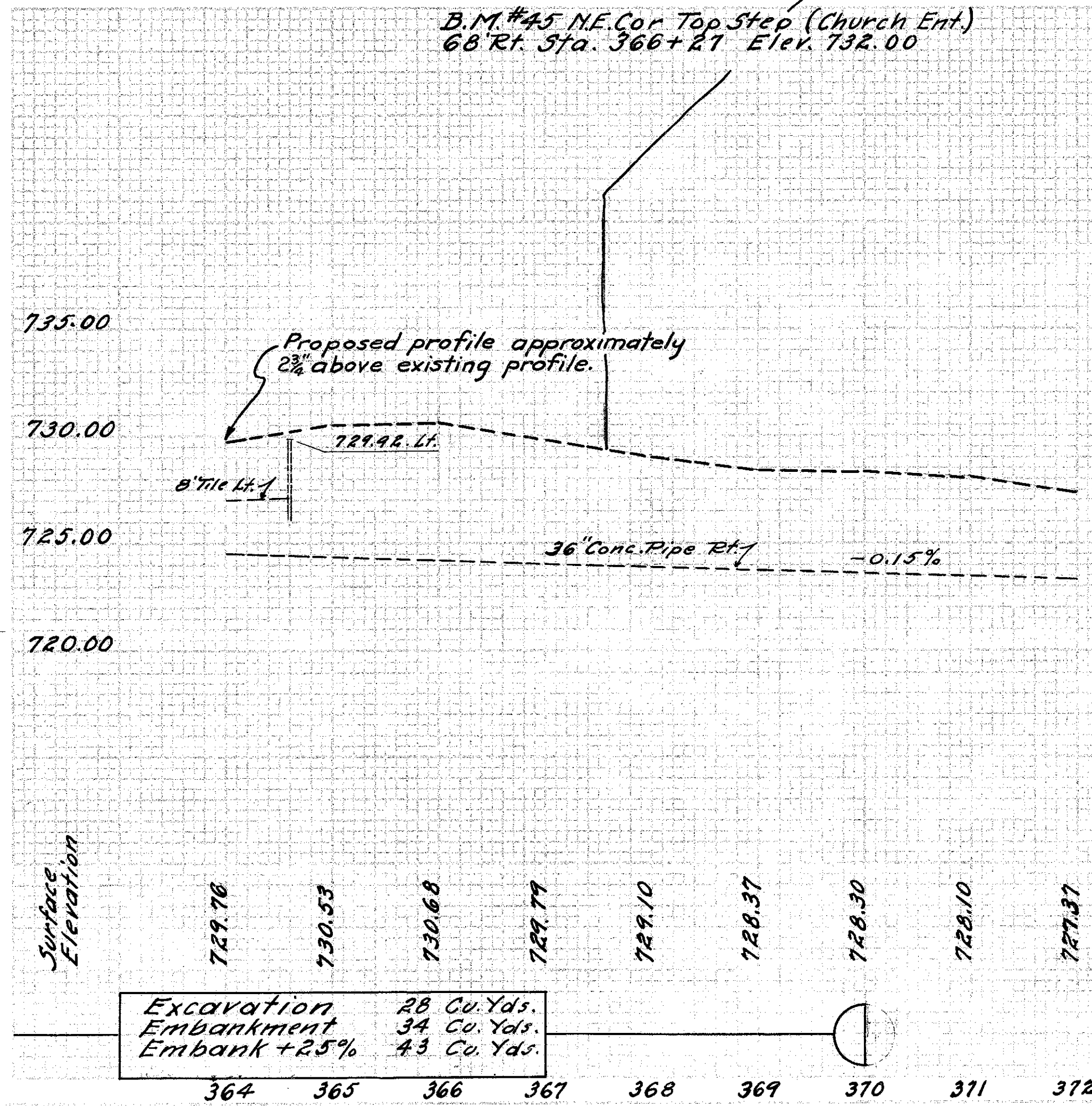






**TYPICAL INTERSECTION.**  
 1-P FULL INTERSECTION  
 2-P, 3-P, 6-P & 7-P HALF INTERSECTIONS.  
 Total 59 Yds. 428

B.M. #45 NE. Cor. Top Step (Church Ent.)  
 68' Rt. Sta. 366+27 Elev. 732.00



**DETAIL OF I-17 STONE DRIVES AND MAIL BOX APPROACHES**  
 Note: Where feasible drive and mail box approaches shall be combined as shown.  
 Aggregate To Be Distributed As Directed By Engineer.

