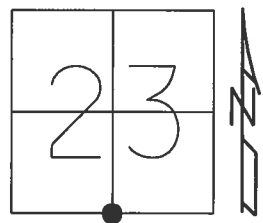


O.D.O.T. DISTRICT 2 SURVEY OFFICE (USE ONLY)

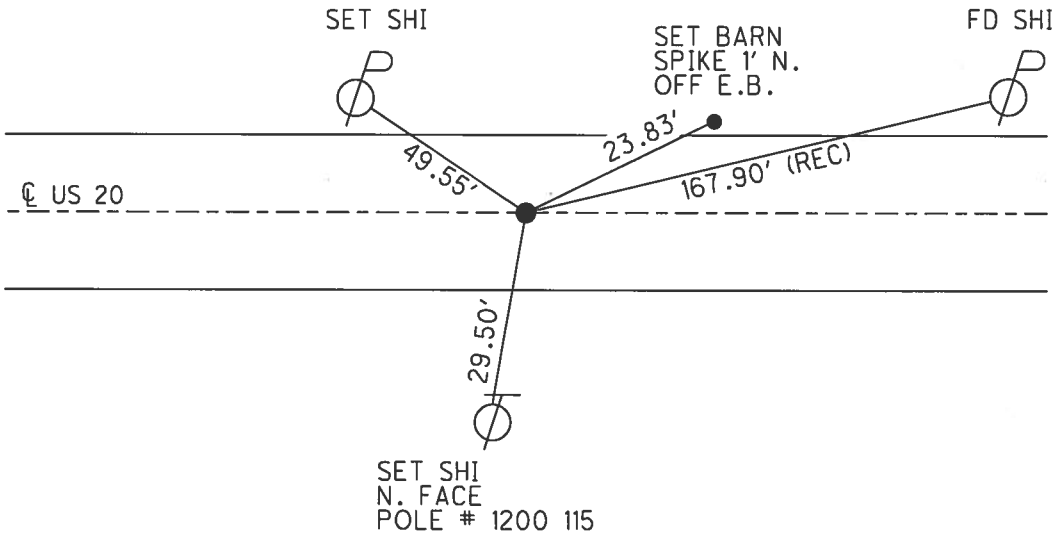
PERSONNEL _____ REFERENCE NO. 2 SHEET 2 OF 38
 NOTES LEU DATE 4/12/17 ROUTE US 20
 H.C. HOMAN WEATHER SUNNY COUNTY FULTON
 R.C. LEU TEMP. 42°F TOWNSHIP GORHAM
 _____ SECTION 23
 _____ T 9 S R 1 W

TYPE MONUMENT P.K.NAIL
 ON SURFACE - ~~BELOW~~ ON _____
~~LEFT~~ - ☉ PAV'T - RIGHT 1'
 - TO - EDGE PAVEMENT
 S.L.M. 26+40



Grid: Northing: 734046.294 Easting: 1452257.534

RECORD:
 SET P.K. NAIL
 1-30-86
 FD P.K. NAIL
 REF2
 4-12-17, DCH
 SET MAG/WASHER
 08-11-2017, DCH



O.D.O.T. DISTRICT 2 SURVEY OFFICE

PERSONNEL _____

REFERENCE NO. 2

SHEET 2 OF _____

NOTES 1. Stone

H.C. D. Curtis

R.C. R. Michalski

T. Householder

DATE 2 Oct. 85

WEATHER Cool

TEMP. 50°

ROUTE US # 20

COUNTY Fulton

TOWNSHIP Gorham

SECTION 23

T _____ R _____

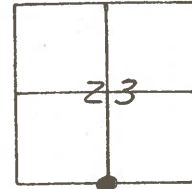
TYPE MONUMENT PK Nail

ON SURFACE - BELOW Surface

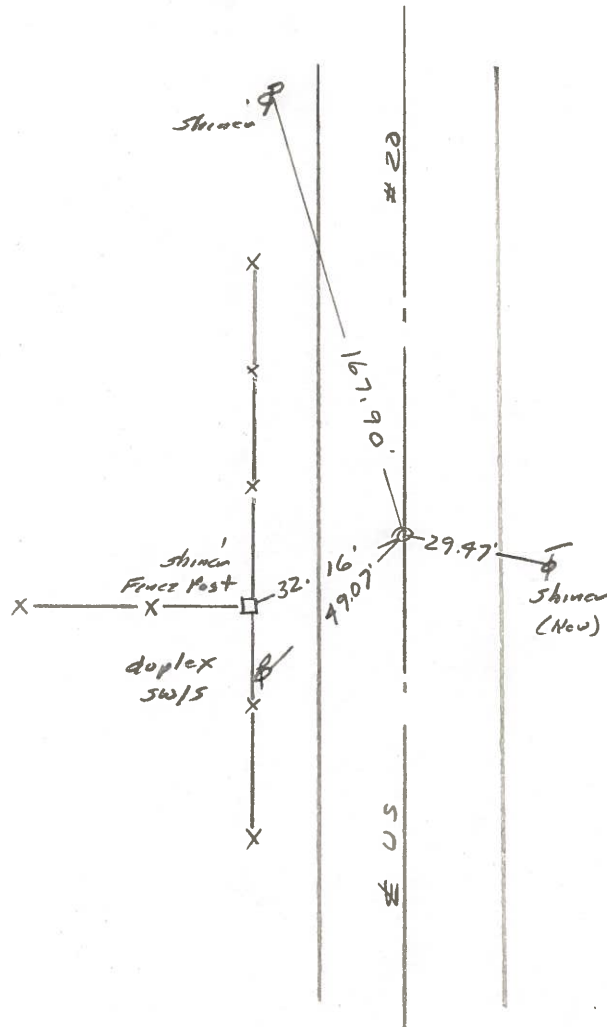
LEFT- & PAV'T. (RIGHT) 1' S. & Pav't

TO _____ EDGE PAVEMENT

S.L.M. 26+40



Set P.K. Nail @ surface
1-30-86



County Fulton S.R. US#20

Date 17 May 82

Township Gorham

Weather Warm

Section 23

Temp. 75°

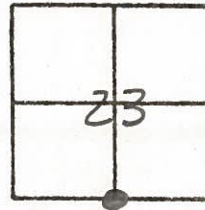
T N, R E

Personnel 1. Stone

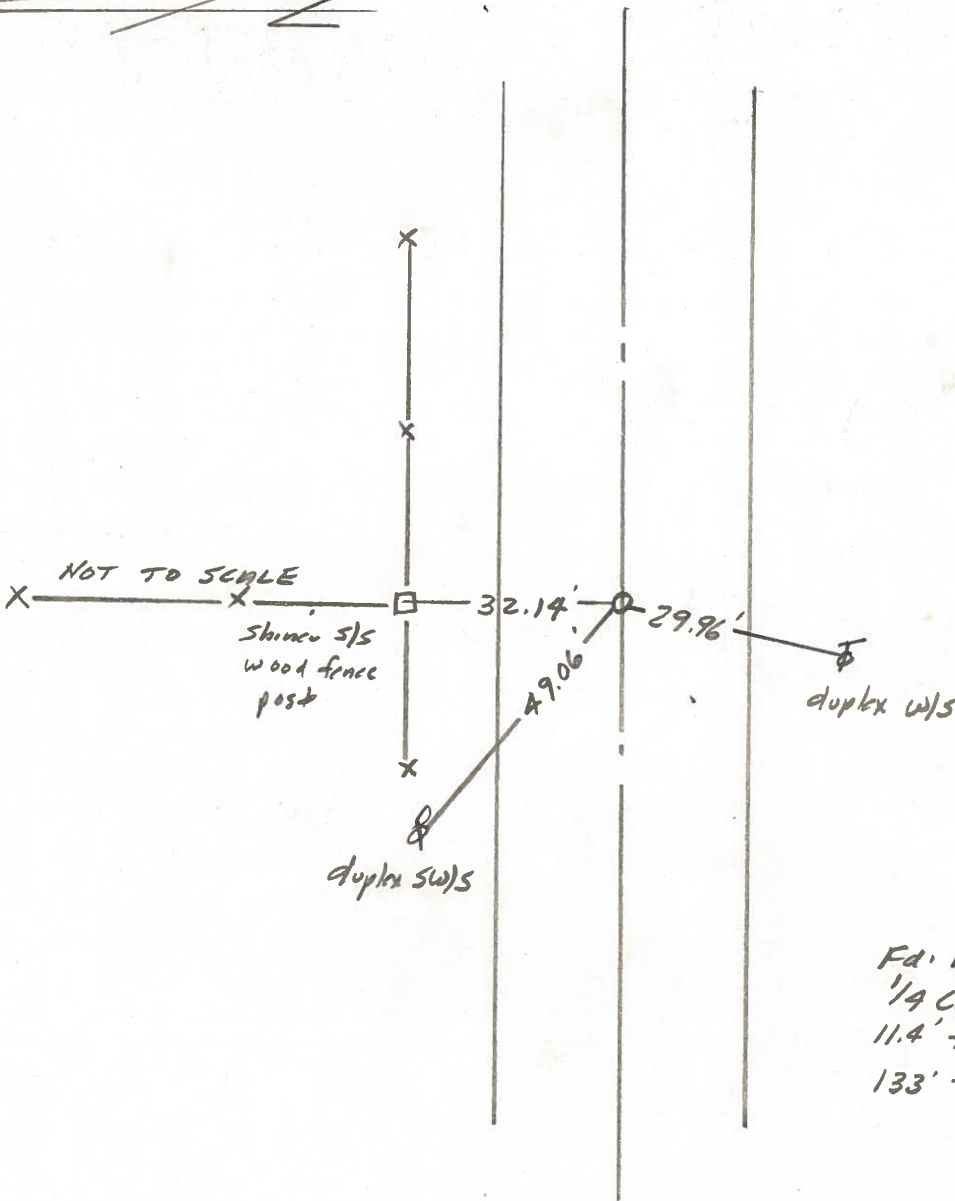
P. Neuse

R. Michalak

D. Curtis



REF. NO. 2



Fd. PK Nai') To Surface
1/4 Cor. Sec. 23/26
11.4' To S. edge post.
133' To N. edge post.

PERSONNEL TITLE PERSONNEL TITLE

Red Beachy
Newcomb
Krape

COUNTY Fulton

DATE Oct.-Nov. 73

S. R. US 20

WEATHER _____

SEC GORHAM TWP. TEMP _____

DESCRIPTION

CONTROL POINTS

JOB NO. _____

LEFT

CENTER LINE

RIGHT

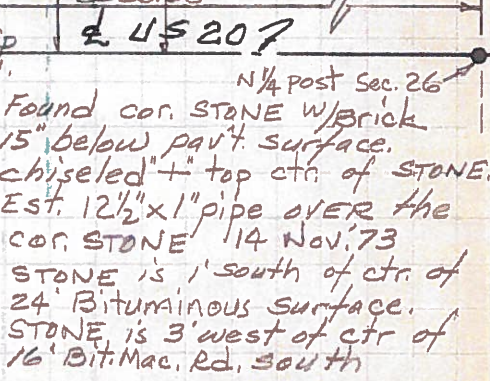
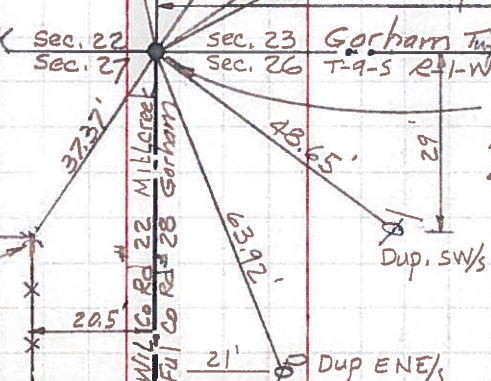
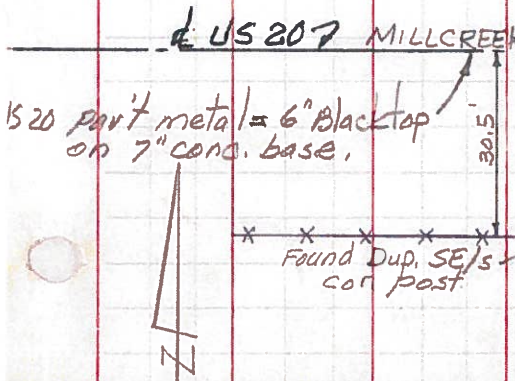
FR.

Williams-Fulton Co. Line STONE

60-d spk NW/s
Triple 15"-16"-23" Mulberry

The county line
STONE is 0.9' west
& 0.2' south of the
Jct. of the transvers
and the longitudinal
Joint of the conc.
base part.

①



South Qtr. post Sec. 23 T-9-S R-1-W GORHAM TWP.
North Qtr. post Sec. 26 T-9-S R-1-W GORHAM TWP.
2626.38' east of Wms County Line STONE

②

