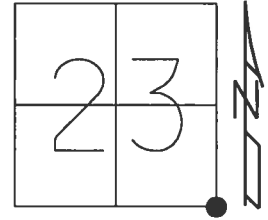


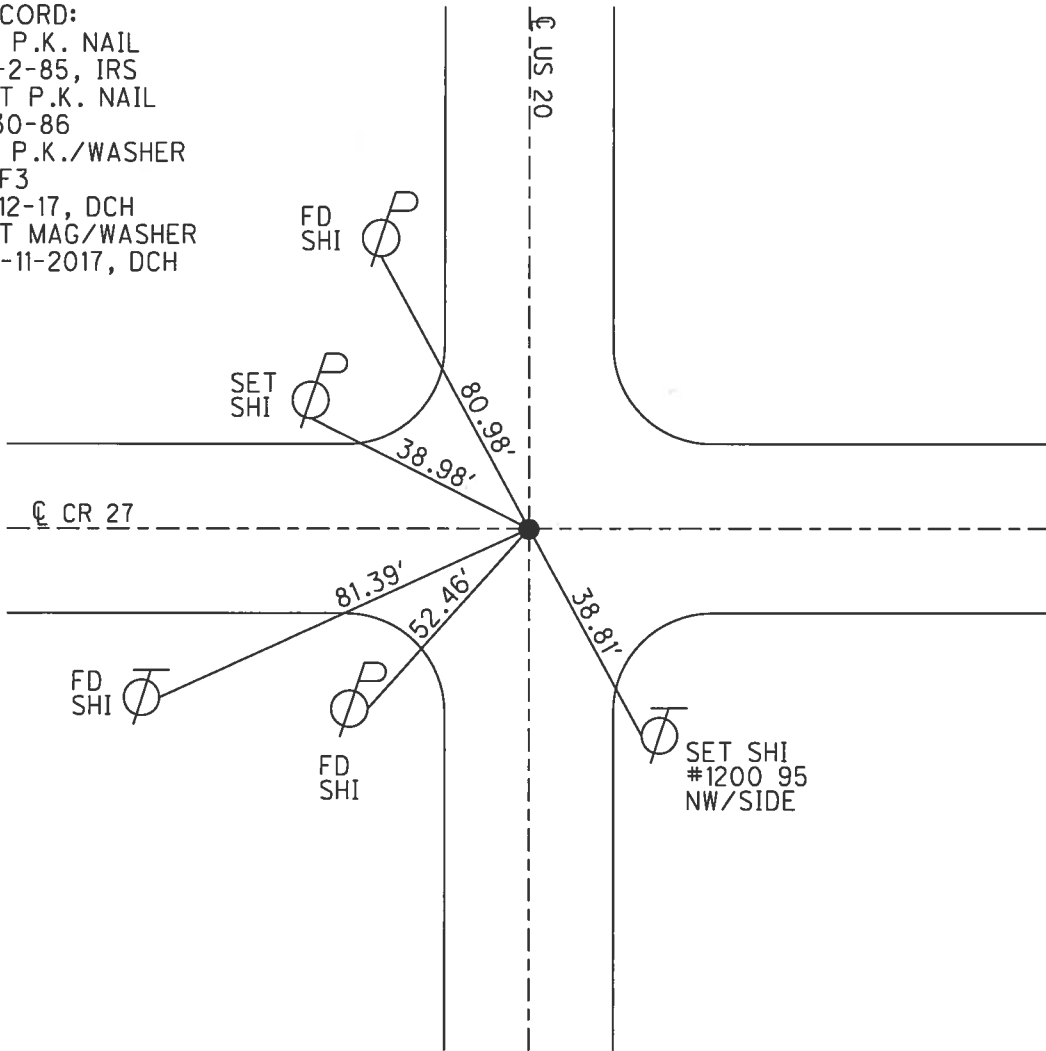
O.D.O.T. DISTRICT 2 SURVEY OFFICE (USE ONLY)

PERSONNEL _____ REFERENCE NO. 3 SHEET 3 OF 38
 NOTES LEU DATE 4/12/17 ROUTE US 20
 H.C. HOMAN WEATHER PARTLY CLOUDY COUNTY FULTON
 R.C. LEU TEMP. 42°F TOWNSHIP GORHAM
 _____ SECTION 23
 _____ T 9 S R 1 W

TYPE MONUMENT P.K./WASHER
 ON SURFACE - ~~BELOW~~ ON _____
~~LEFT~~ - ☉ PAV'T - RIGHT 1.5'
 _____ TO _____ EDGE PAVEMENT
 S.L.M. 52+80
 Grid: Northing: 733997.525 Easting: 1454890.942



RECORD:
 FD P.K. NAIL
 10-2-85, IRS
 SET P.K. NAIL
 1-30-86
 FD P.K./WASHER
 REF3
 4-12-17, DCH
 SET MAG/WASHER
 08-11-2017, DCH



O.D.O.T. DISTRICT 2 SURVEY OFFICE

PERSONNEL

REFERENCE NO. 3

SHEET 3 OF

NOTES L. S. Lane

H.C. D. Curtis

R.C. R. Michalak

J. Hooscholder

DATE 2 Oct. 85

WEATHER Cool

TEMP. 51°

ROUTE US # 20

COUNTY Fulton

TOWNSHIP Garbans

SECTION 23-24-25-26

T R

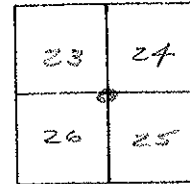
TYPE MONUMENT P.K. Nail

ON SURFACE - BELOW Surface

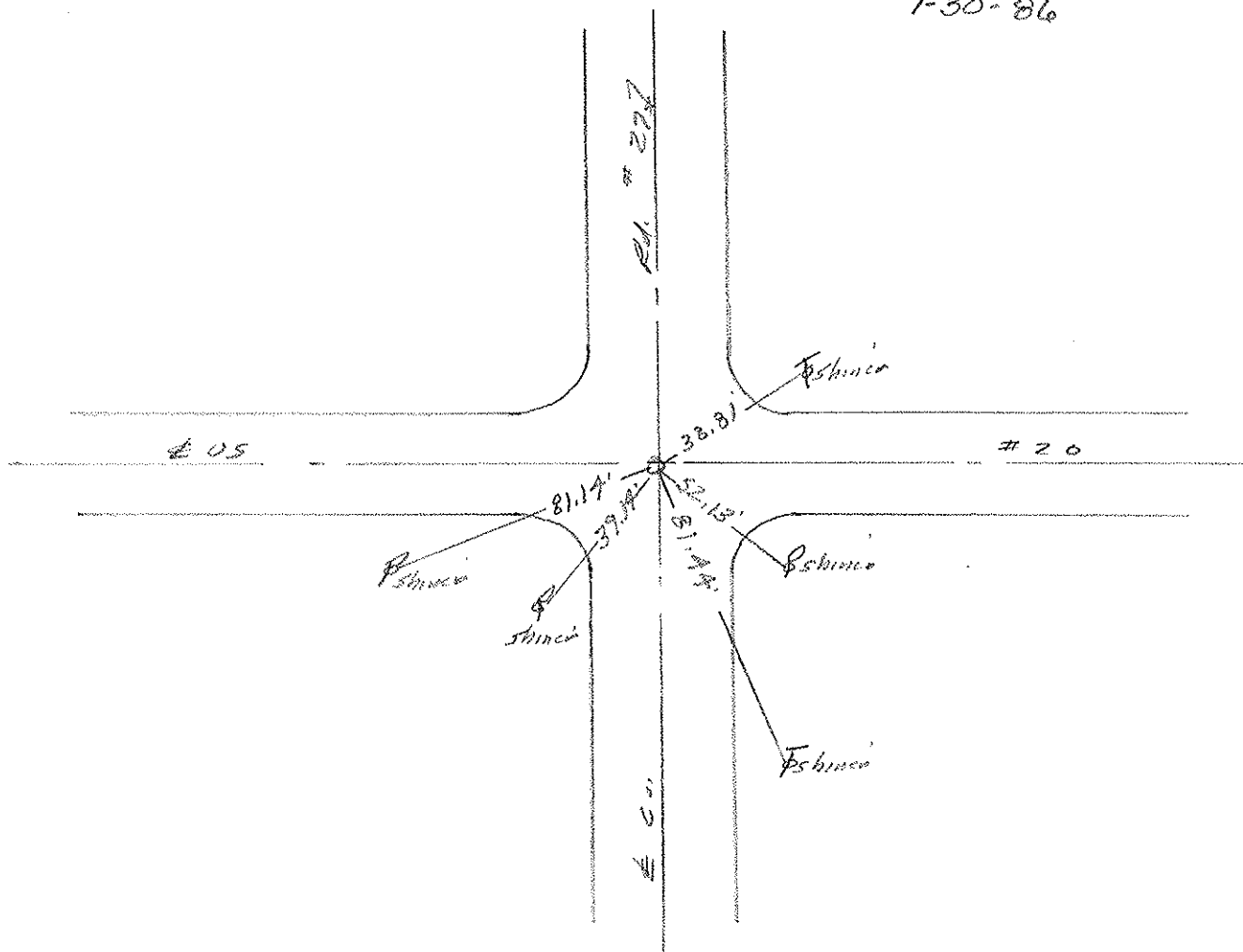
LEFT - & PAV'T. - (RIGHT) 1.7' S. & Pav't.

TO EDGE PAVEMENT

S.L.M. 52+80



Set P.K. Nail @ surface
1-30-86



County Fulton S.R. US#20

Date 17 May 82

Township Georgetown

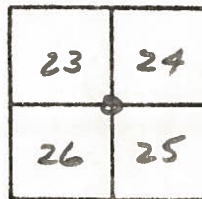
Weather Warm

Section 23-24-25-26

Temp. 76°

T, N, R, E

Personnel I. Stone

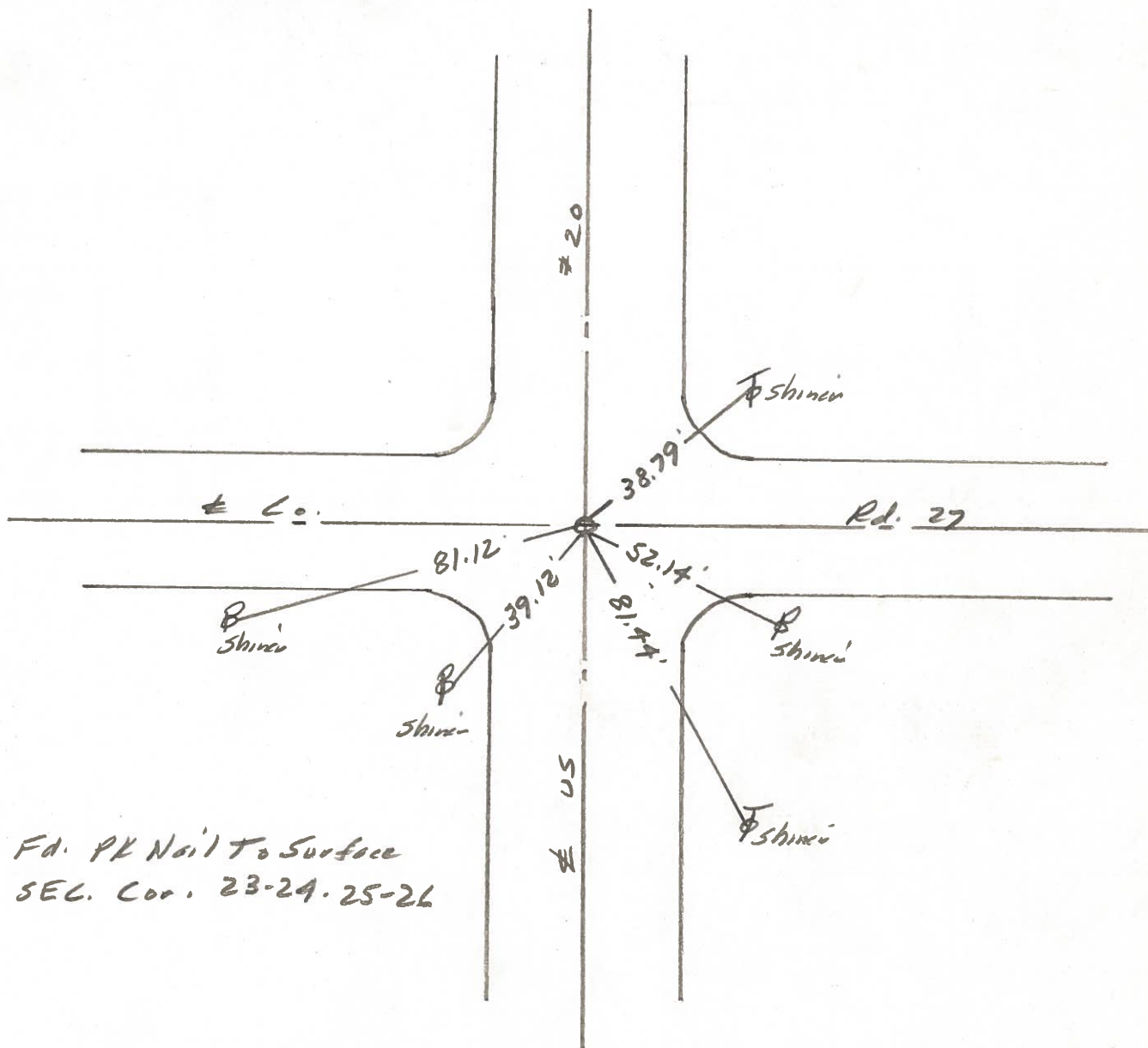


P. Newser

R. Michalak

D. Curtis

REF. NO. 3



Fd. PK Nail To Surface
SEC. Cor. 23-24-25-26

