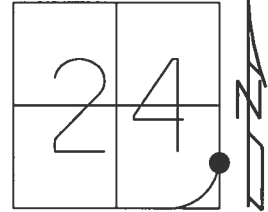


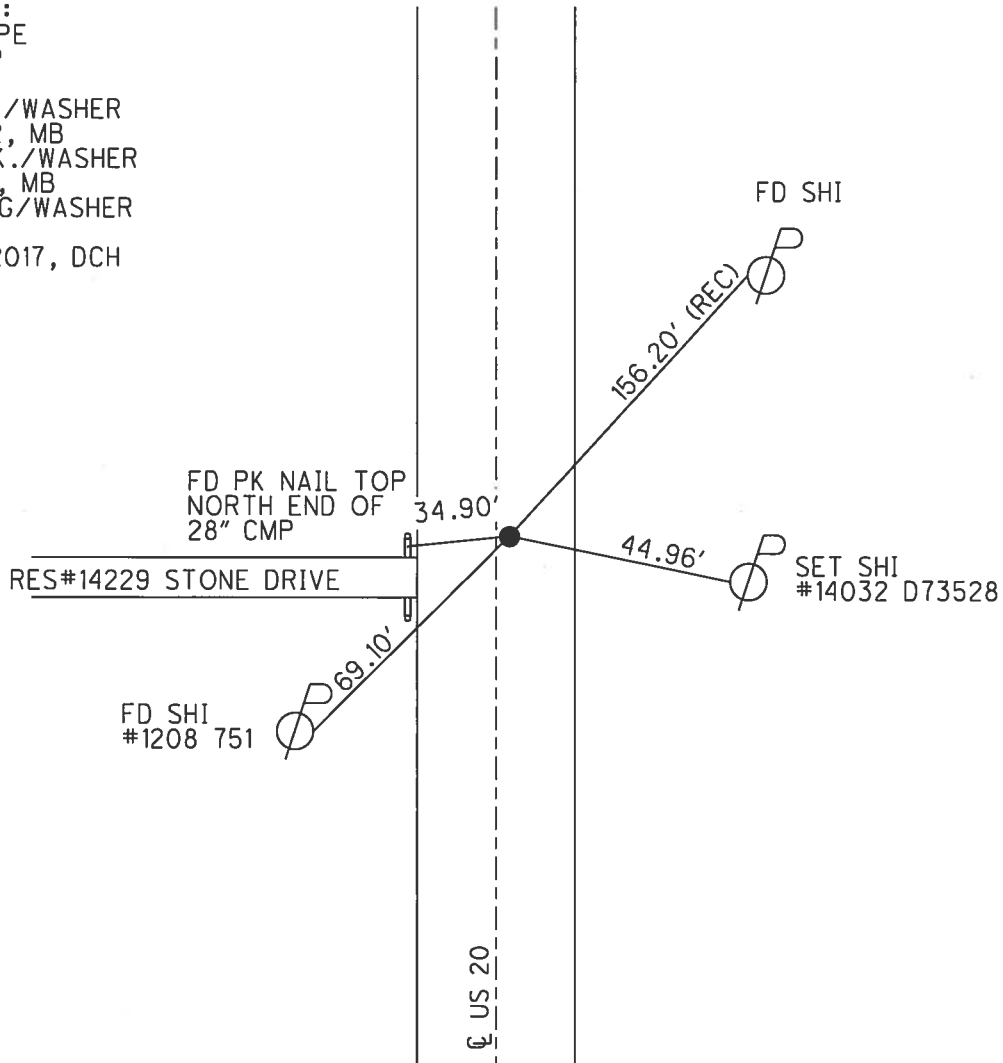
O.D.O.T. DISTRICT 2 SURVEY OFFICE (USE ONLY)

PERSONNEL _____ REFERENCE NO. 5 B SHEET 6 OF 38
 NOTES LEU DATE 4/12/17 ROUTE US 20
 H.C. HOMAN WEATHER Partly Cloudy COUNTY FULTON
 R.C. LEU TEMP. 42°F TOWNSHIP GORHAM
 _____ SECTION 24
 _____ T 9 S R 1 W

TYPE MONUMENT P.K./WASHER
 ON SURFACE - ~~BELOW~~ ON _____
~~LEFT~~ - CL PAV'T - RIGHT 1.1'
11.5 TO RT EDGE PAVEMENT
 S.L.M. 114+74
 Grid: Northing: 735287.834 Easting: 1460280.073



RECORD:
 1" I. PIPE
 4" DEEP
 7-24-91
 FD P.K./WASHER
 5-16-02, MB
 SET P.K./WASHER
 6-6-02, MB
 SET MAG/WASHER
 REFB5
 08-14-2017, DCH



O.D.O.T. DISTRICT 2 SURVEY OFFICE

PERSONNEL

REFERENCE NO. 5-B

SHEET 3 OF 13

NOTES M. CANTERBURY

H.C. M. BRAUNHISEL

R.C. K. MOSEK

DATE 5-16-02

WEATHER OVERCAST

TEMP. 72°

ROUTE US 20

COUNTY FULTON

TOWNSHIP GORHAM

SECTION 24

T 9 S R 1 W

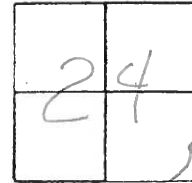
TYPE MONUMENT P.K. w/washer

ON SURFACE - BELOW yes

LEFT - & PAINT - RIGHT OS

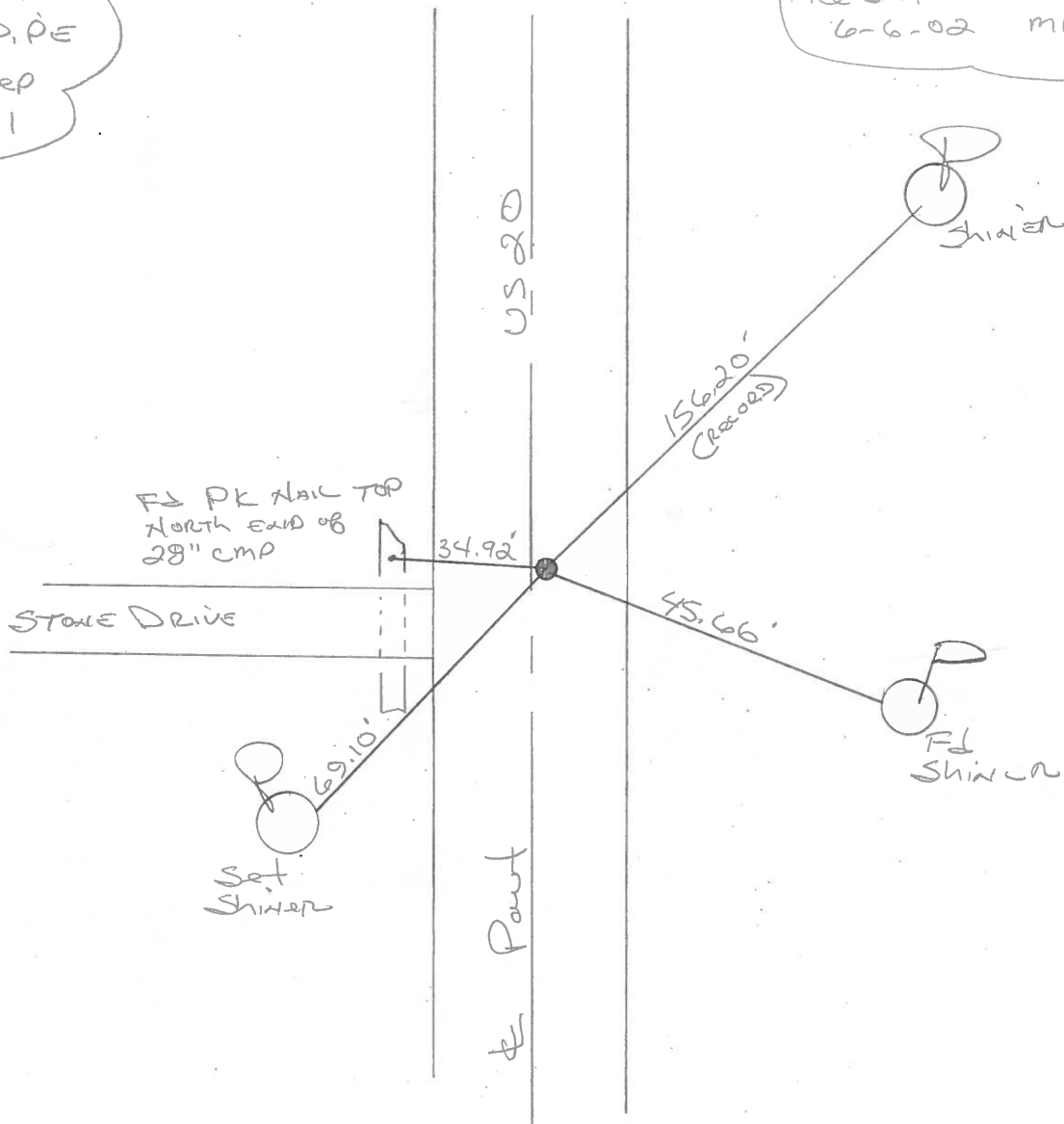
115 TO LT EDGE PAVEMENT

S.L.M. 114+74



RECORDS;
1" I.P. PE
4" deep
7-24-91

Re-set PK w/washer
6-6-02 MB



O.D.O.T. DISTRICT 2 SURVEY OFFICE

PERSONNEL _____

REFERENCE NO. 5-B

SHEET 3 OF _____

NOTES 1. Stone

H.C. D. Curtis

R.C. C. Lochrke

DATE 24 July 91

WEATHER Woods

TEMP. 83°

ROUTE US #20

COUNTY Fulton

TOWNSHIP Gorham

SECTION 24

T. _____ R. _____

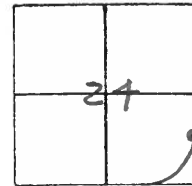
TYPE MONUMENT 1" I. pipe Set P.K./WASHER

ON SURFACE - BELOW 4" deep 3-26-92

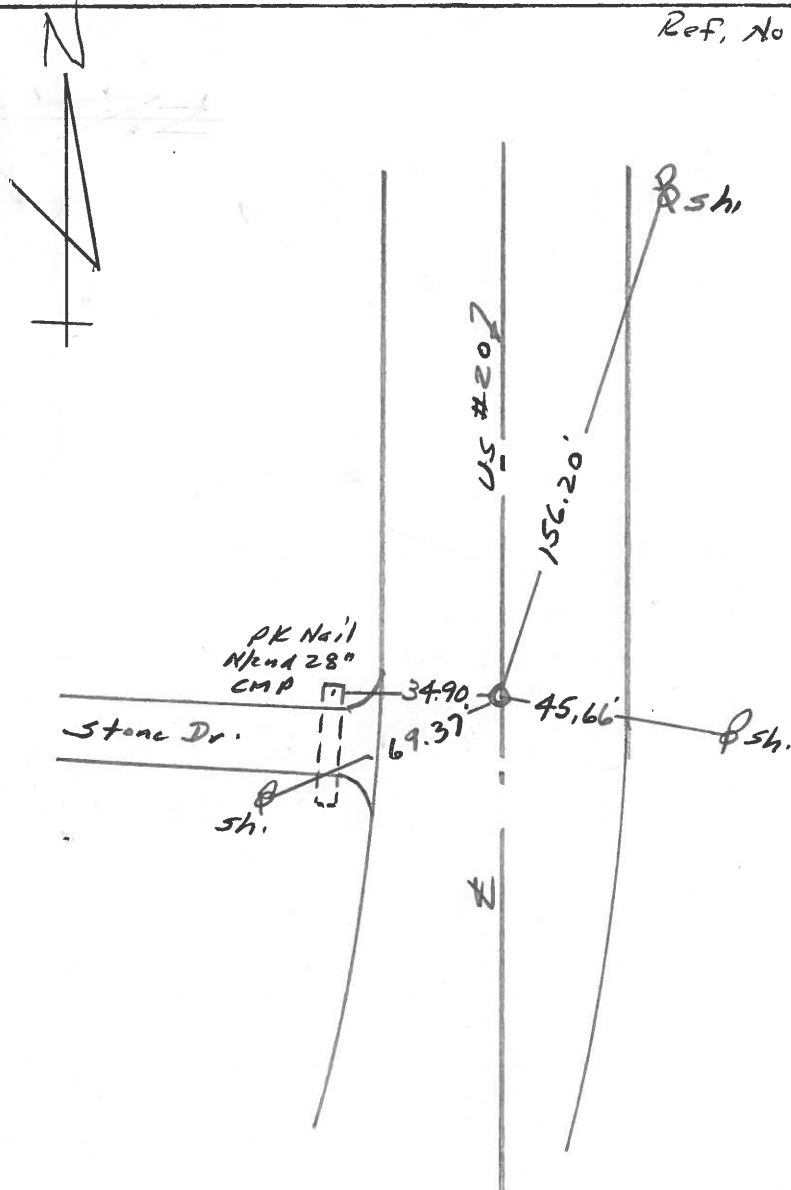
LEFT- & PAV'T. - RIGHT ctr.

TO _____ EDGE PAVEMENT

S.L.M. 121+00



Ref. No. 5A = P.I. OFF THE ROAD



County Fulton S.R. 05#20

Township Gooborn

Section 24

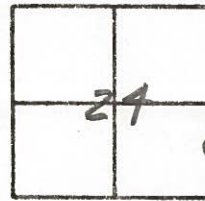
T, N, R, E

Personnel I. Stone
P. Newser
R. Michalak
D. Curtis

Date 17 May 82

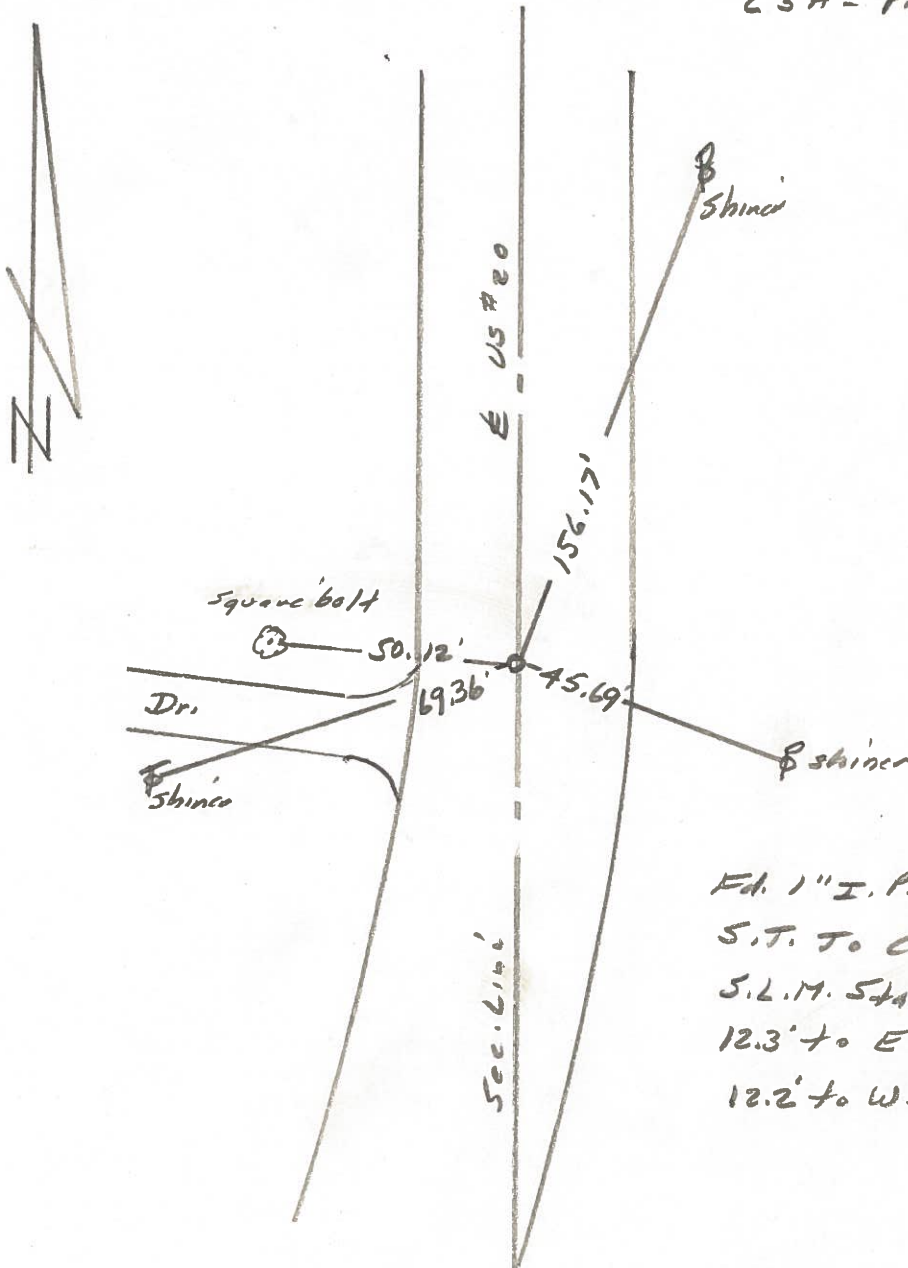
Weather Warm

Temp. 78°



REF. NO. 5B

(SA = P.I. off Road)



Ed. 1" I. Pipe 4" deep
S.T. To Curve.
S.L.M. Sta. 119405
12.3' to E. edge put.
12.2' to W. edge put.

PERSONNEL	TITLE	PERSONNEL	TITLE	COUNTY	DATE	WEATHER	TEMP
Red Beach				Fulton	4 Sept. 1974		
W. Knape				US 20			
DESCRIPTION				CONTROL POINTS		JOB NO.	

