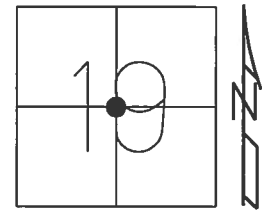


O.D.O.T. DISTRICT 2 SURVEY OFFICE (USE ONLY)

PERSONNEL	REFERENCE NO.	<u>8</u>	SHEET	<u>10</u>	OF	<u>38</u>
NOTES	LEU	DATE	<u>4/12/17</u>	ROUTE	<u>US 20</u>	
H.C.	<u>HOMAN</u>	WEATHER	<u>SUNNY</u>	COUNTY	<u>FULTON</u>	
R.C.	<u>LEU</u>	TEMP.	<u>51°F</u>	TOWNSHIP	<u>GORHAM</u>	
				SECTION	<u>19</u>	
				T	<u>9</u>	R
				S	<u>1</u>	E

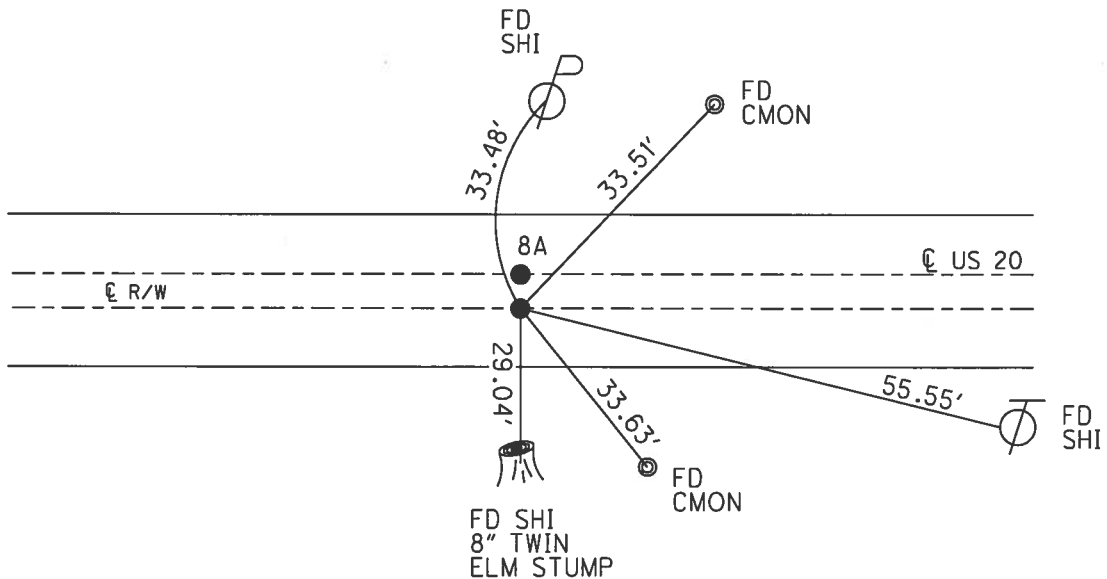
TYPE MONUMENT P.K./WASHER
 ON SURFACE - ~~BELOW~~ ON
~~LEFT~~ - CL PAV'T - RIGHT 3.0'
8.5 TO RT EDGE PAVEMENT
 S.L.M. 174+85



Grid: Northing: 736442.696 Easting: 1465294.649

DIST. 8-8A = 5.80'

RECORD:
 1" IPIPE
 1 1/2" DOWN
 7-24-91
 P.K./WASHER
 5-16-02, MB
 SET P.K./WASHER
 6-6-02, MB
 FD P.K./WASHER
 REF8
 4-12-2017, DCH
 SET MAG/WASHER
 08-14-2017, DCH



O.D.O.T. DISTRICT 2 SURVEY OFFICE

PERSONNEL

REFERENCE NO. 8

SHEET 6 OF 13

NOTES M. Cantrell

H.C. M. Bannister

R.C. K. Mason

DATE 5-16-00

WEATHER overcast

TEMP. 70°

ROUTE US 20

COUNTY Polk

TOWNSHIP Grandham

SECTION 19

T 2 S R 1 E

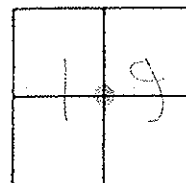
TYPE MONUMENT A = Pk. w/ marker ; B = 1" I.P. pipe

ON SURFACE - BELOW A = Surface ; B = Below

LEFT - & PAV'T. - RIGHT A = 2.4' RT ; B = 3.0' L.

A = 8.5 TO RT EDGE PAVEMENT

S.L.M. 174785



Records;

1" I.P. pipe @ both points

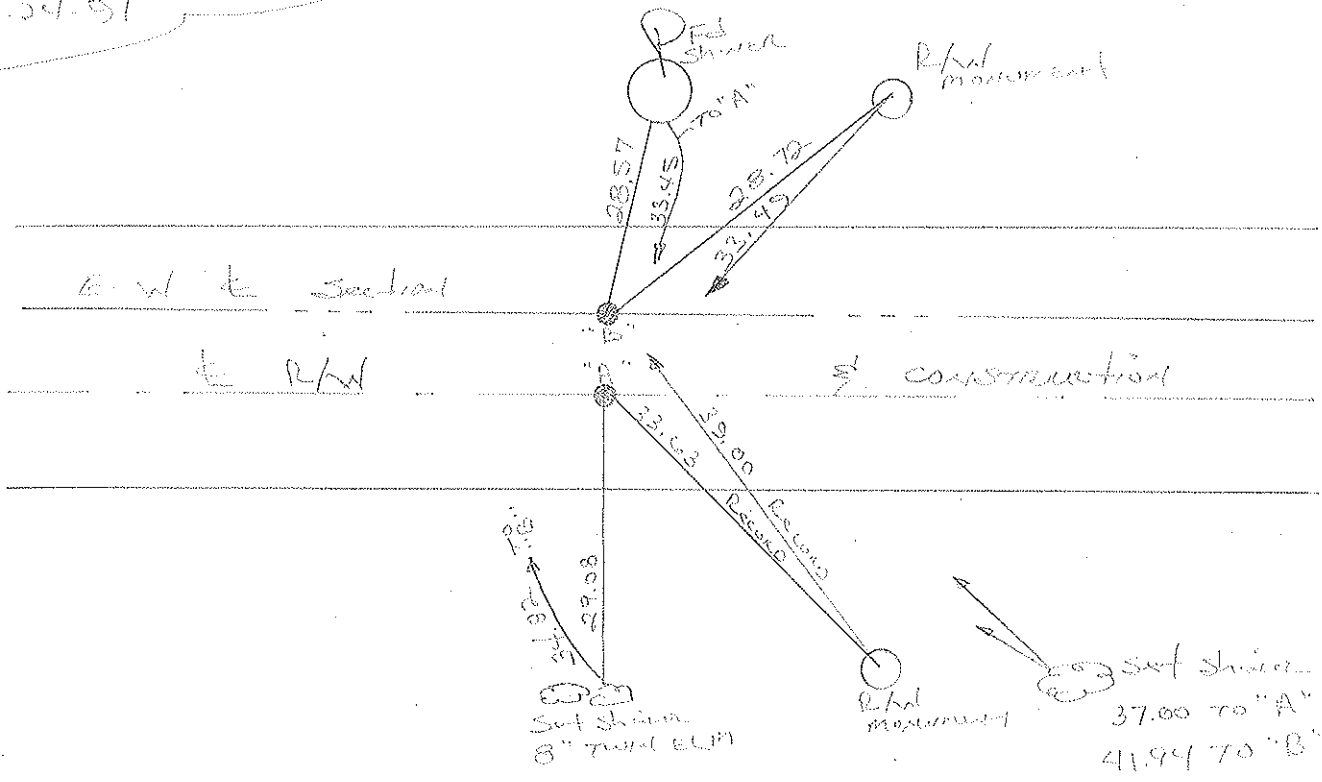
1 1/2" D. o.d.

Ⓢ: R/W of road, US20

7-24-01

5.78' Dist A & B

Point - PK. w/ marker @ both A & B



O.D.O.T. DISTRICT 2 SURVEY OFFICE

PERSONNEL

REFERENCE NO. 8

SHEET 6 OF

NOTES 1. Stone

H.C. D. Curtis

R.C. G. Lochrke

DATE 24 July 91

WEATHER Warm

TEMP. 83°

ROUTE US #20

COUNTY Fulton

TOWNSHIP Gorham

SECTION 19

T R

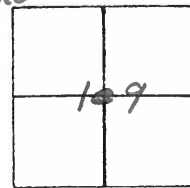
TYPE MONUMENT Both 1" I. pipes Set P.K. / WASHERS

ON SURFACE - BELOW 1 1/2" deep 3-27-92

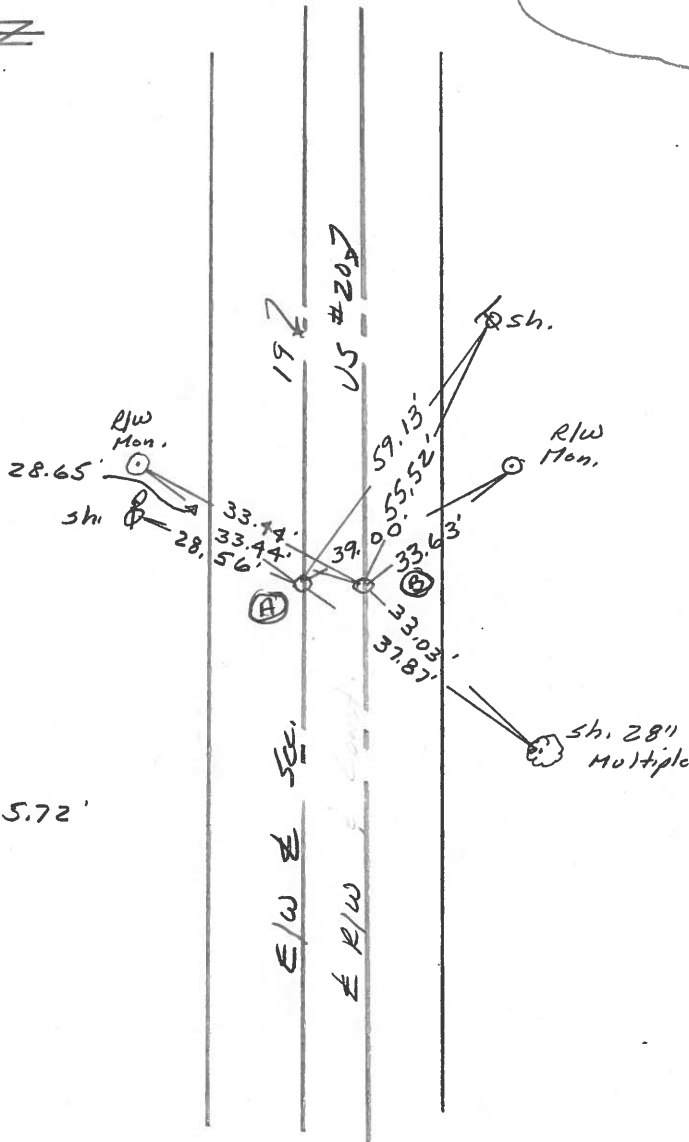
LEFT - \odot PAV'T. - RIGHT \odot = 2.5' R/W \oplus put.

 TO EDGE PAVEMENT

S.L.M. 181417



RECORD: \odot = \oplus R/W
 \oplus CONST, US 20



Dist Btw. A & B = 5.72'

County Fulton S.R. US#20

Township Go-ham

Section 19

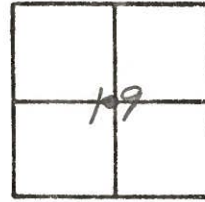
T N, R E

Personnel I. Stone
P. Neuser
R. Michalek
D. Curtis

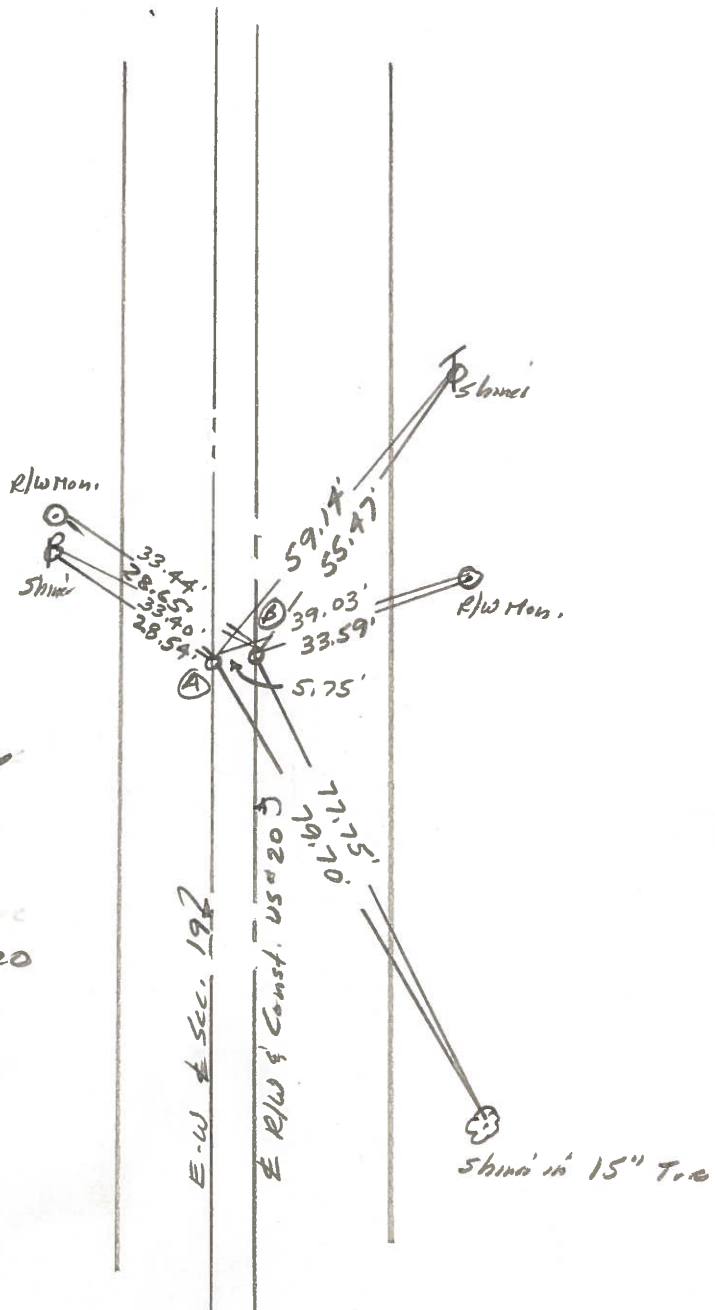
Date 18 May 82

Weather Warm

Temp. 77°



REF. NO. 8



Ⓐ = FA. 1" I. Pipe 1 1/2" deep
 E-W & Sec. 19
 SLM Sta. 179+29

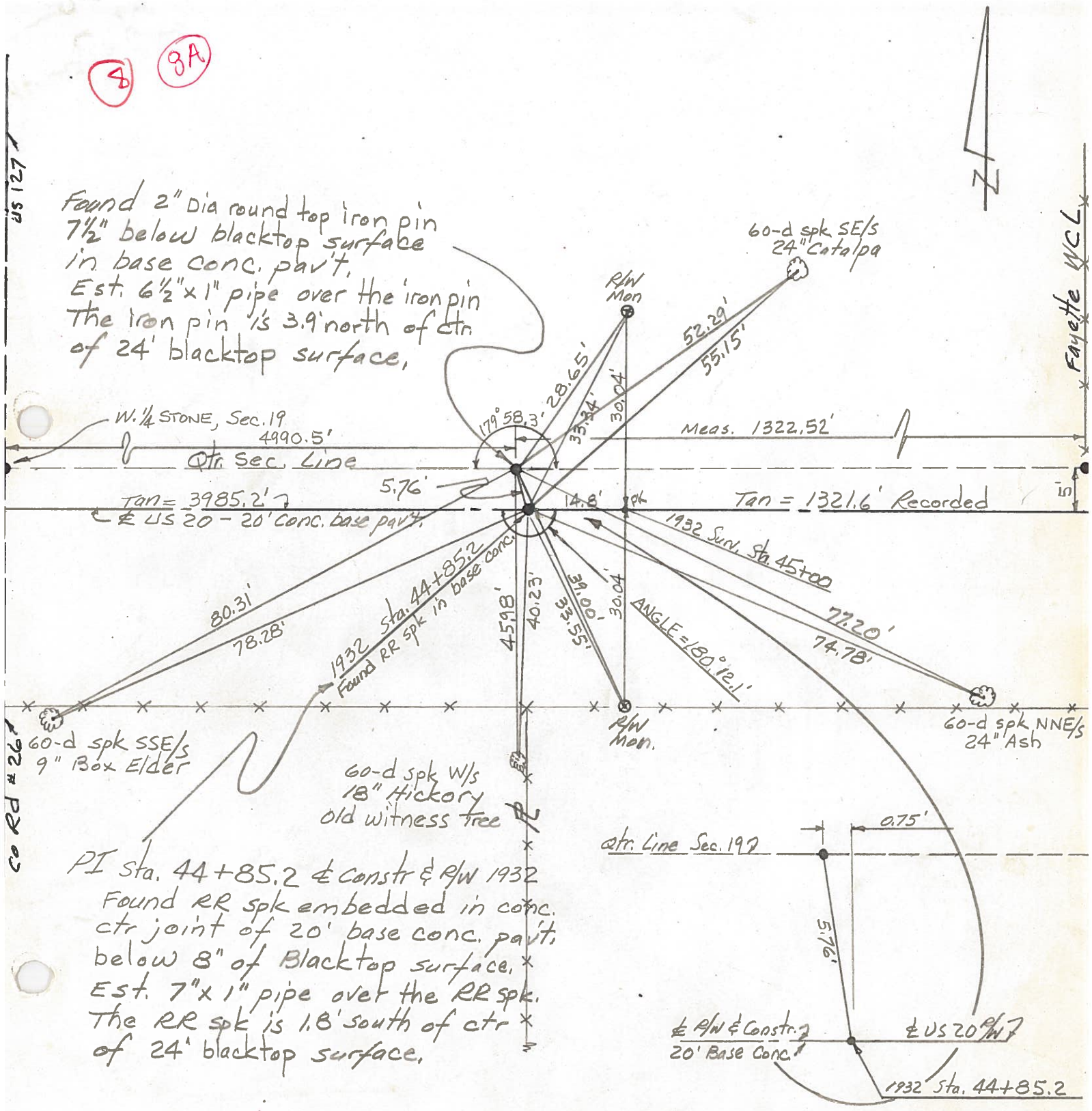
Ⓑ = FA. 1" I. Pipe 1 1/2" deep
 & R/W & Const US#20
 SLM Sta. 179+30
 14.2' to N. edge put.
 10.4' to S. edge put.

PERSONNEL	TITLE	PERSONNEL	TITLE
Red Beach			
W. Knape			
D. Boyle			
J. Bagdonas			

COUNTY Fulton DATE 25 June 74
 S. R. US 20 WEATHER _____
 SEC. 19 Gorham TEMP _____
 DESCRIPTION CONTROL POINTS JOB NO. _____

(8) (9A)

Found 2" Dia round top iron pin
 7 1/2" below blacktop surface
 in base conc. pav't.
 Est. 6 1/2" x 1" pipe over the iron pin
 The iron pin is 3.9' north of ctr
 of 24' blacktop surface.



US 127

Fayette WCL

60 RD # 26

PI Sta. 44+85.2 & constr & RW 1932
 Found RR spk embedded in conc.
 ctr joint of 20' base conc. pav't.
 below 8" of Blacktop surface.
 Est. 7" x 1" pipe over the RR spk.
 The RR spk is 1.8' south of ctr
 of 24' blacktop surface.

& RW & Constr. 20' Base Conc.
 & US 20 RW

1932 Sta. 44+85.2