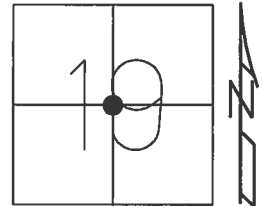


O.D.O.T. DISTRICT 2 SURVEY OFFICE (USE ONLY)

PERSONNEL \_\_\_\_\_ REFERENCE NO. 8 A SHEET 11 OF 38  
 NOTES LEU DATE 4/12/17 ROUTE US 20  
 H.C. HOMAN WEATHER SUNNY COUNTY FULTON  
 R.C. LEU TEMP. 51°F TOWNSHIP GORHAM  
 \_\_\_\_\_ SECTION 19  
 \_\_\_\_\_ T 9 S R 1 E

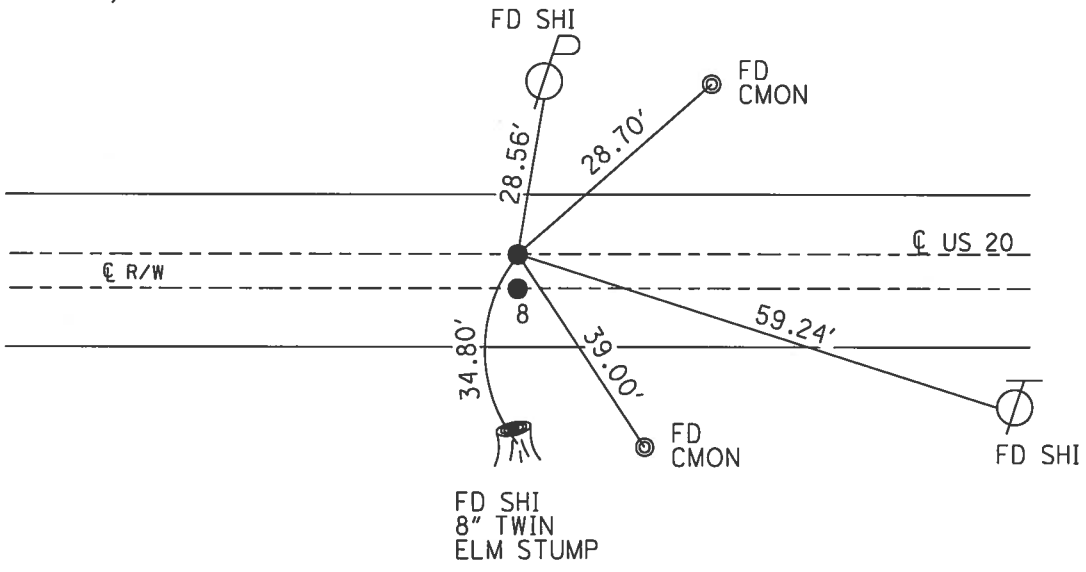
TYPE MONUMENT P.K./WASHER  
~~ON SURFACE~~ - BELOW ON  
 LEFT - ☉ PAV'T - ~~RIGHT~~ 2.8'  
14.2 TO RT EDGE PAVEMENT  
 S.L.M. 174+85



Grid: Northing: 736436.967 Easting: 1465295.129

DIST. 8-8A= 5.80'

RECORD:  
 1" IPIPE  
 1 1/2" DOWN  
 ☉ RW & CONST. US20  
 7-24-91  
 FD I PIPE  
 BELOW SURFACE  
 5-16-02, MB  
 SET P.K./WASHER  
 6-6-02, MB  
 FD P.K./WASHER  
 REFA8  
 4-12-2017, DCH  
 SET MAG/WASHER  
 08-14-2017, DCH



# O.D.O.T. DISTRICT 2 SURVEY OFFICE

PERSONNEL

REFERENCE NO. 8

SHEET 6 OF 13

NOTES M. Cantrell

H.C. M. Bannister

R.C. K. Mason

DATE 5-16-00

WEATHER overcast

TEMP. 70°

ROUTE US 20

COUNTY Polk

TOWNSHIP Grandham

SECTION 19

T 2 S R 1 E

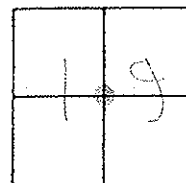
TYPE MONUMENT A = Pk. w/ marker ; B = 1" I.P. pipe

ON SURFACE - BELOW A = Surface ; B = Below

LEFT - & PAV'T. - RIGHT A = 2.4' RT ; B = 3.0' RT.

A = 8.5 TO RT EDGE PAVEMENT

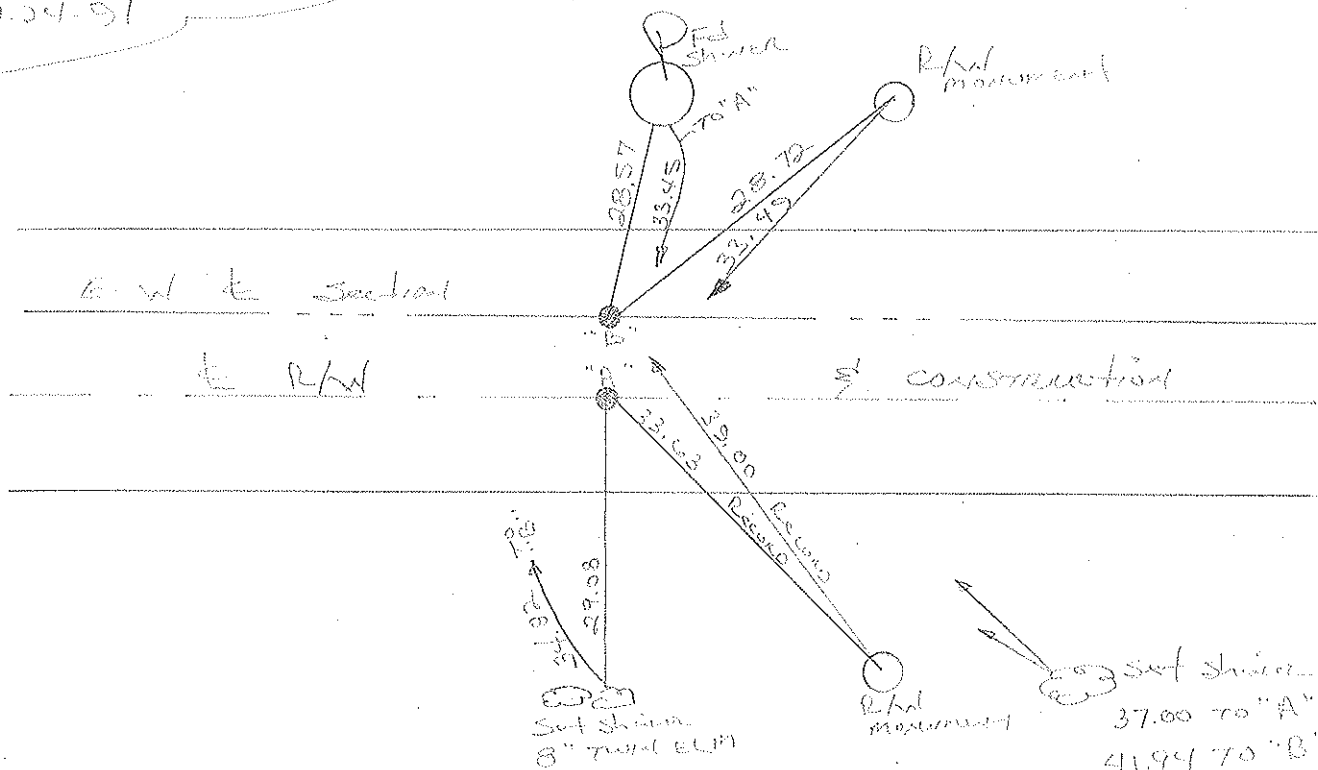
S.L.M. 174785



Records;  
 1" I.P. pipe @ both points  
 1 1/2" D. o. p.  
 (S) = R/W of road, US20  
 7.24-91

5.78' Dist A & B

Point - PK. w/ marker @ both A & B



O.D.O.T. DISTRICT 2 SURVEY OFFICE

PERSONNEL \_\_\_\_\_

REFERENCE NO. 8 SHEET 6 OF \_\_\_\_\_

NOTES 1. Stone

H.C. D. Curtis

R.C. C. Lochake

DATE 27 July 91

WEATHER Warm

TEMP. 83°

ROUTE US #20

COUNTY Fulton

TOWNSHIP Gorham

SECTION 19

T \_\_\_\_\_ R \_\_\_\_\_

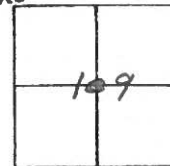
TYPE MONUMENT Both 1" I. pipe Set P.K. WASHERS

ON SURFACE - BELOW 1/2" deep 3-27-92

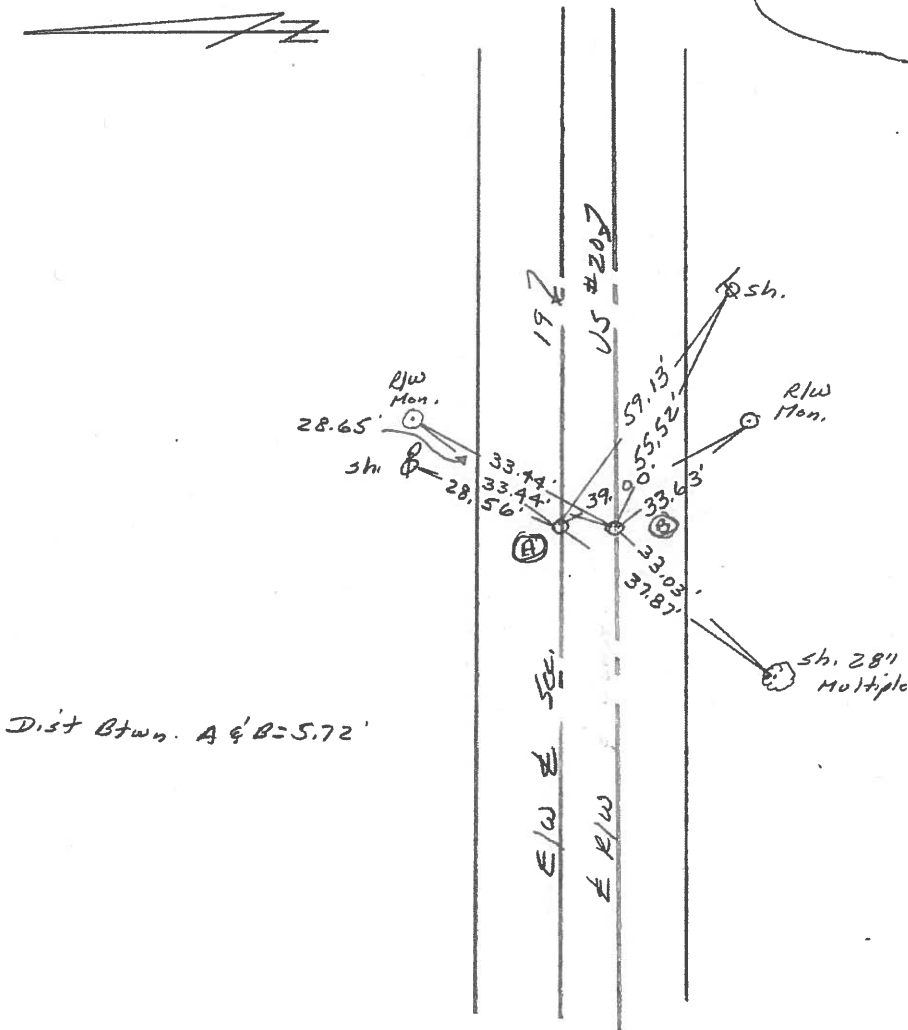
LEFT- & PAW'T. - RIGHT ⊙ = 2.5' R. & put.

TO \_\_\_\_\_ EDGE PAVEMENT

S.L.M. 181+17



RECORD: ⊙ = & R/W  
& CONST, US 20



County Fulton S.R. US#20

Date 18 May 82

Township Go-hann

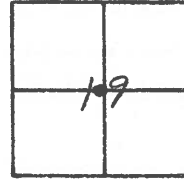
Weather Warm

Section 19

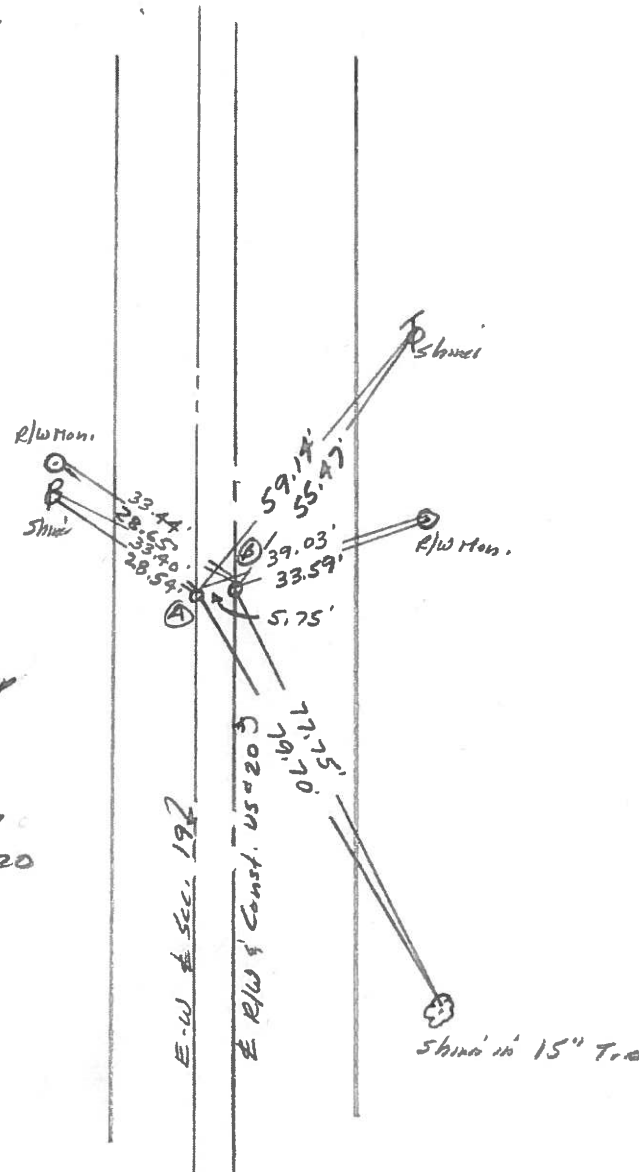
Temp. 77°

T, N, R, E

Personnel I. Stone  
P. Neuser  
R. Michalak  
D. Curtis



REF. NO. 8



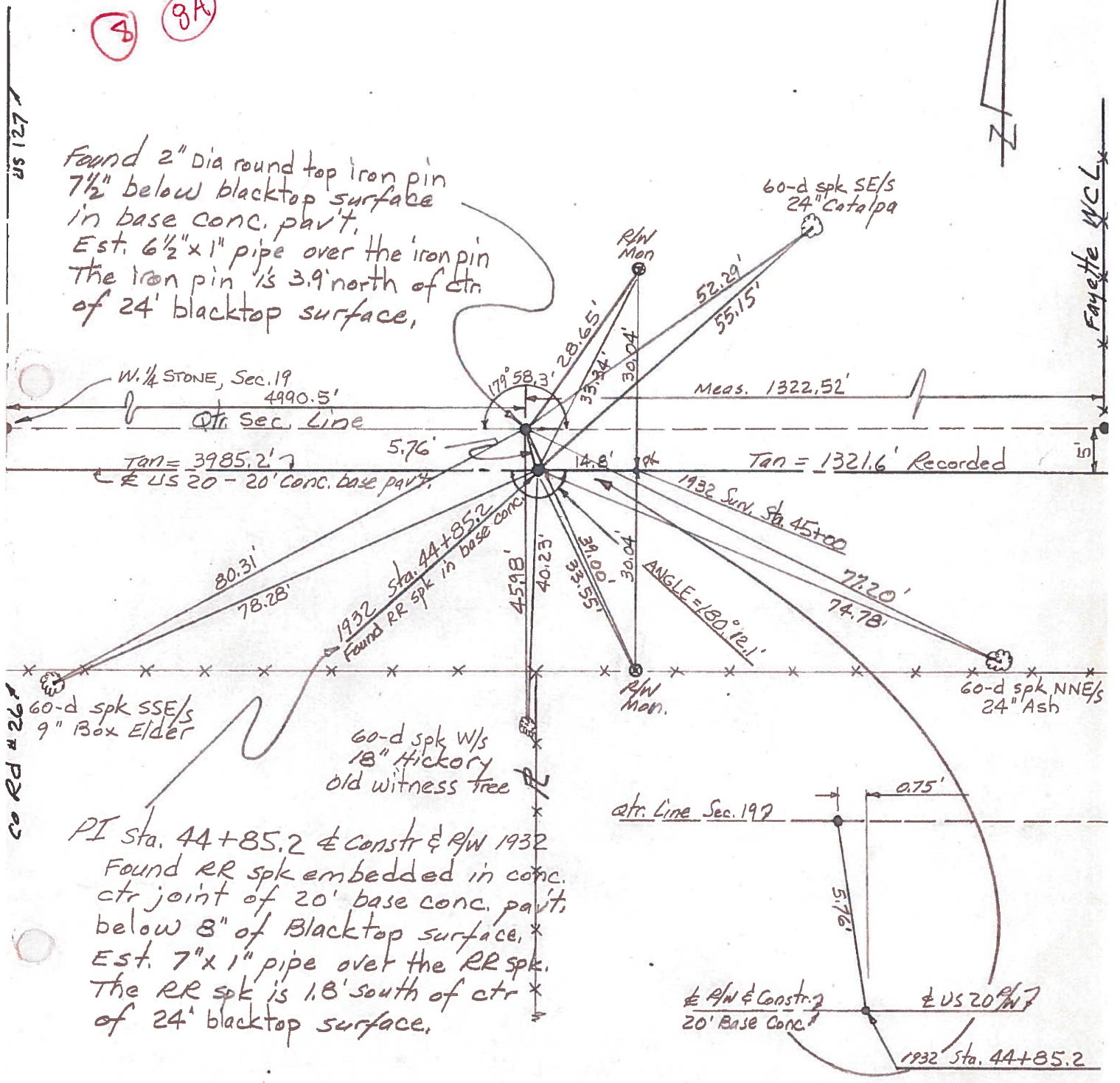
- (A) = F.A. 1" I. Pipe 1 1/2" deep  
E-W & Sec. 19  
SLM Sta. 179+29
- (B) = F.A. 1" I. Pipe 1 1/2" deep  
& R/W & Const US#20  
SLM Sta. 179+30  
14.2' to N. edge put.  
10.4' to S. edge put.

PERSONNEL	TITLE	PERSONNEL	TITLE	COUNTY	DATE
Red Beach				Fulton	25 June 74
W. Knappe				S. R. US 20	WEATHER _____
D. Boyle				SEC. 19 Gorham	TEMP _____
J. Bagdonas					
DESCRIPTION CONTROL POINTS				JOB NO. _____	

(4) (9A)



Found 2" dia round top iron pin  
 7 1/2" below blacktop surface  
 in base conc. pav't.  
 Est. 6 1/2" x 1" pipe over the iron pin  
 The iron pin is 3.9' north of ctr  
 of 24' blacktop surface.



PI Sta. 44+85.2 & constr & RW 1932  
 Found RR spk embedded in conc.  
 ctr joint of 20' base conc. pav't.  
 below 8" of Blacktop surface.  
 Est. 7" x 1" pipe over the RR spk.  
 The RR spk is 1.8' south of ctr  
 of 24' blacktop surface.

& RW & Constr. 20' Base Conc. & US 20 RW

1932 Sta. 44+85.2