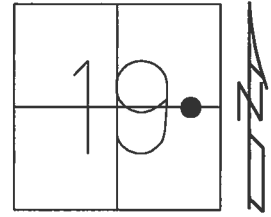


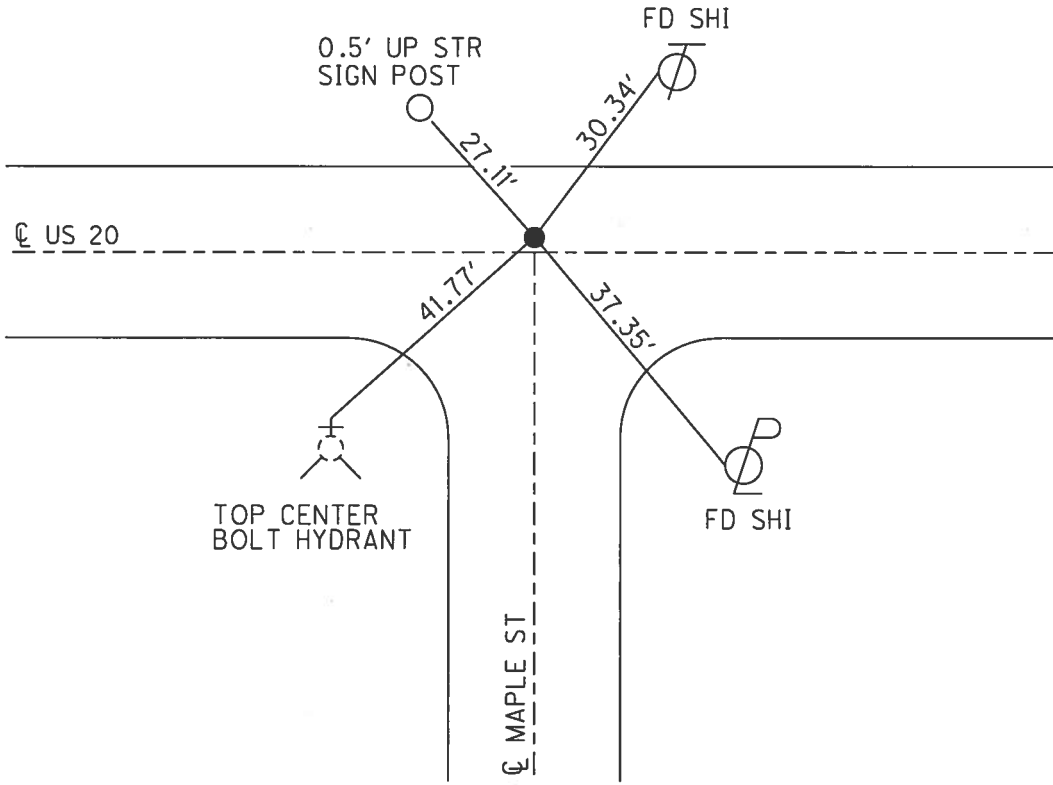
O.D.O.T. DISTRICT 2 SURVEY OFFICE (USE ONLY)

PERSONNEL \_\_\_\_\_ REFERENCE NO. 10 A SHEET 16 OF 38  
 NOTES LEU DATE 4/13/17 ROUTE US 20  
 H.C. HOMAN WEATHER OVERCAST COUNTY FULTON  
 R.C. LEU TEMP. 48°F TOWNSHIP GORHAM  
 \_\_\_\_\_ SECTION 19  
 \_\_\_\_\_ T 9 S R 1 E

TYPE MONUMENT P.K.NAIL  
 ON SURFACE - ~~BELOW~~ ON  
 LEFT - ☉ PAV'T - RIGHT ON  
15.0 TO LT EDGE PAVEMENT  
 S.L.M. 205+12  
 Grid: Northing: 736405.036 Easting: 1468320.259



RECORD:  
 FD SM. R.R.SPIKE  
 5-17-02, MB  
 SET P.K./WASHER  
 6-6-02, MB  
 FD P.K.NAIL  
 REFA10  
 4-13-2017, DCH  
 SET MAG/WASHER  
 08-14-2017, DCH



# O.D.O.T. DISTRICT 2 SURVEY OFFICE

PERSONNEL \_\_\_\_\_

REFERENCE NO. 10-A

SHEET 11 OF 13

NOTES M. Canterbury

H.C. M. Barkiniec

R.C. K. Moser

DATE 5-17-02

WEATHER OVERCAST

TEMP. 52°

ROUTE US 20

COUNTY FULTON

TOWNSHIP Gordham

SECTION 19

T 9 S R 1 E

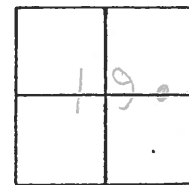
TYPE MONUMENT Small R.R. SPICE

ON SURFACE - BELOW 2"

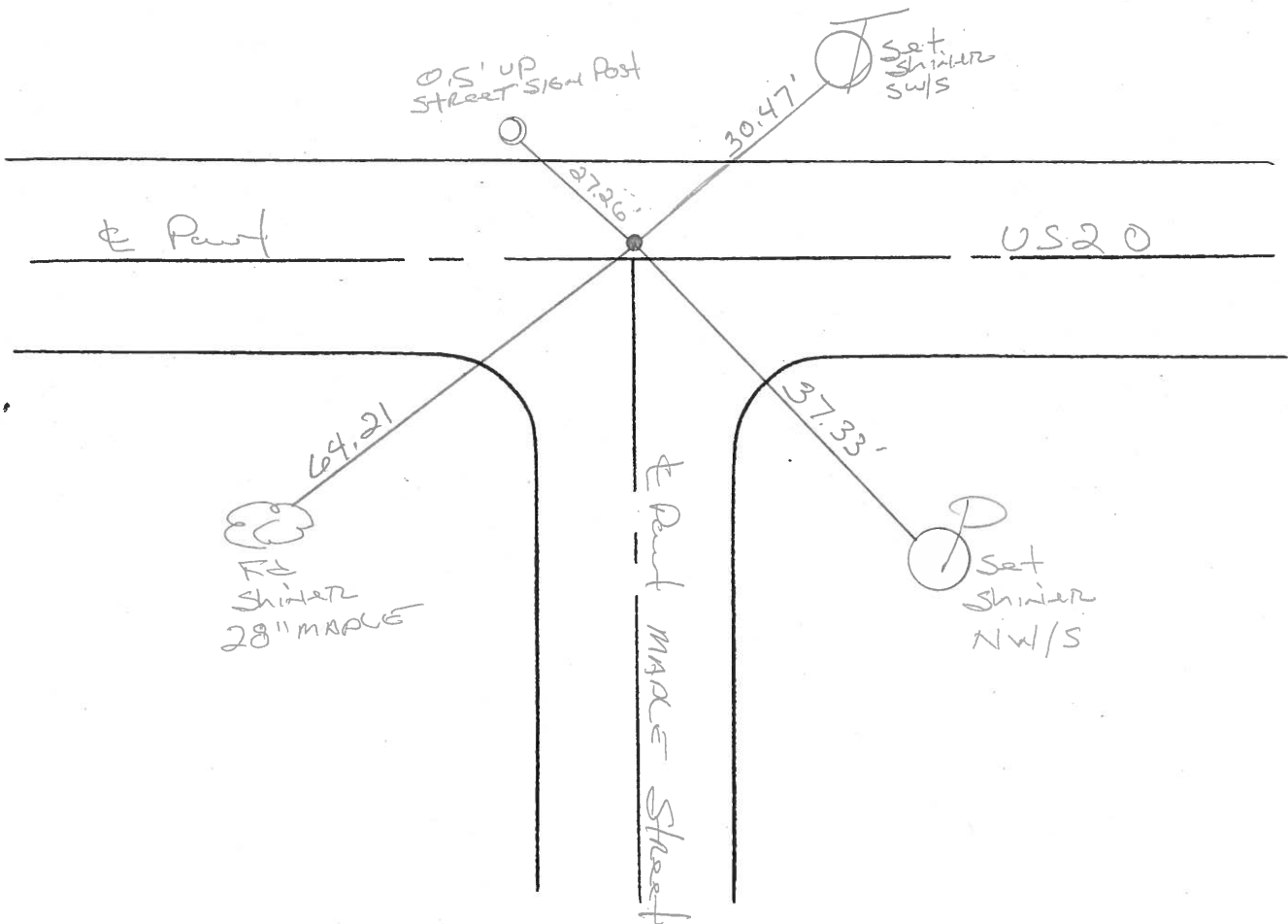
LEFT - € PAW'T. - RIGHT 0.2'

15.0 TO LT EDGE PAVEMENT (Curb)

S.L.M. 205+12



Reset P.K. w/ washer  
6-6-02 MB



O.D.O.T. DISTRICT 2 SURVEY OFFICE

PERSONNEL

REFERENCE NO. 10-A

SHEET 11 OF     

NOTES 1. Stone

H.C. D. Curtis

R.C. C. Looker

DATE 24 July 91

WEATHER Warm

TEMP. 83°

ROUTE US #20

COUNTY Fulton

TOWNSHIP Gordon

SECTION 19

T      R     

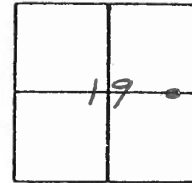
TYPE MONUMENT Sm. RK Spk. Set RK/WASHER

ON SURFACE - BELOW Surface 3-27-92

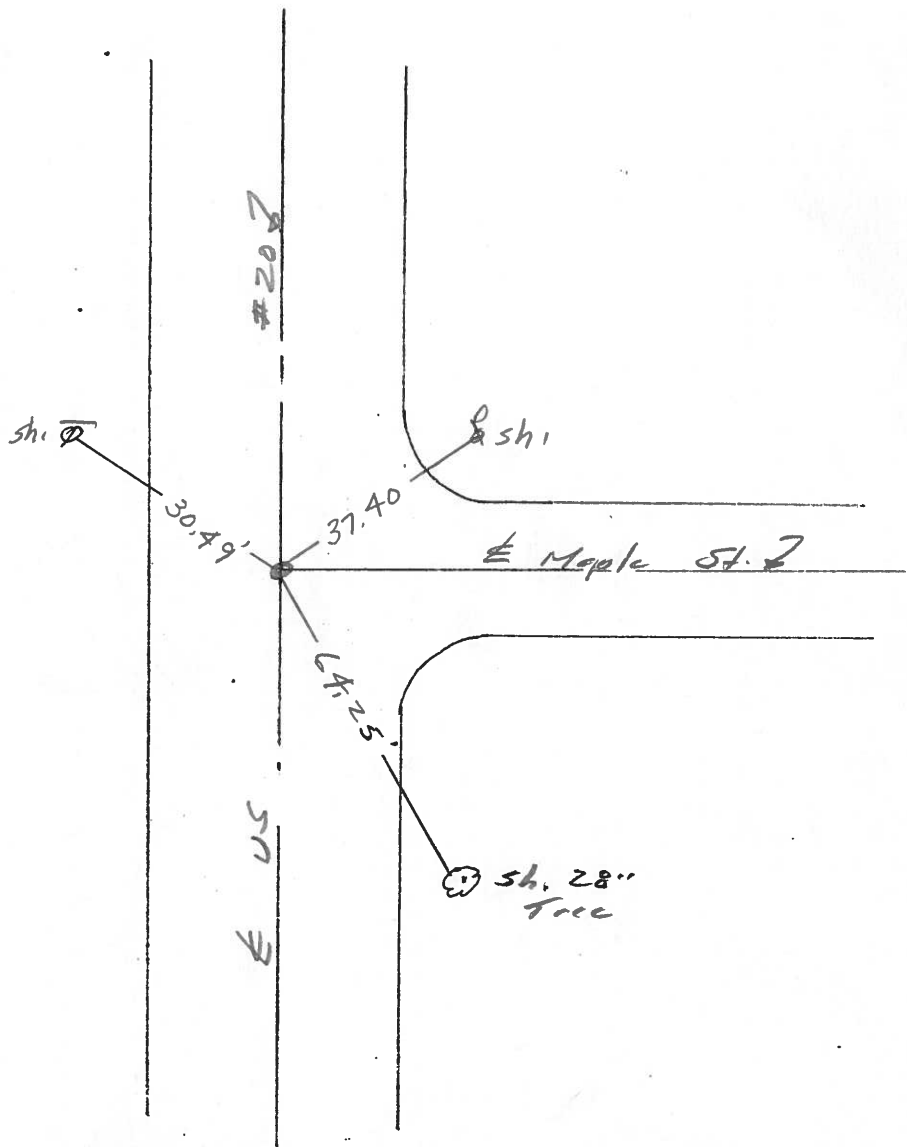
LEFT - & PAW'T. - RIGHT     

     TO      EDGE PAVEMENT

S.L.M. 211+44





County Fulton S.R. US #20

Township Garham

Section 19

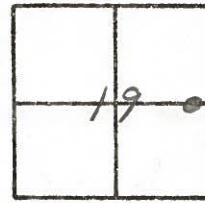
T N, R E

Personnel I. Stone  
P. Nausen  
R. Michalak  
D. Curtis

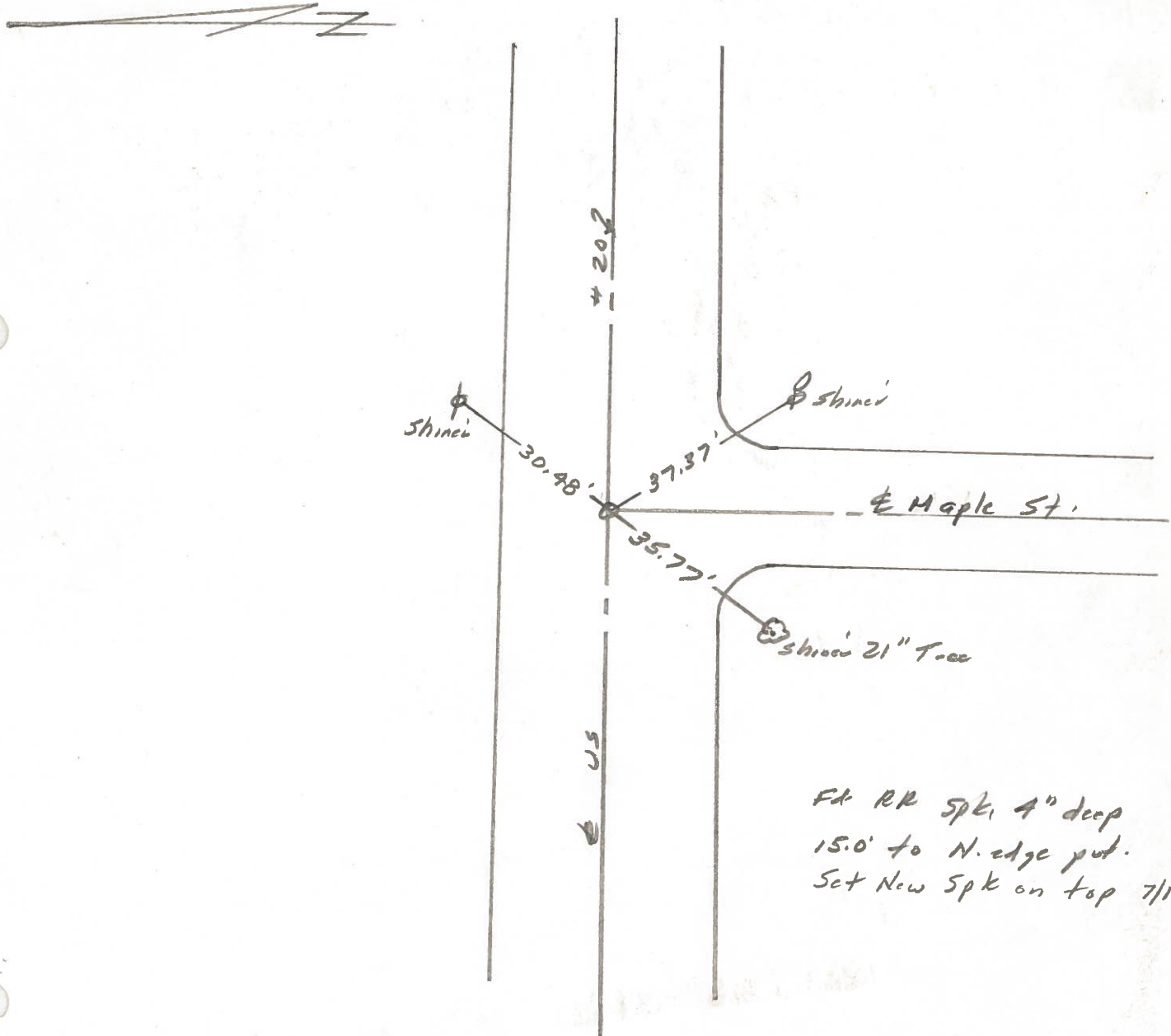
Date 18 May 82

Weather Warm

Temp. 79°



REF. NO. 10A



PERSONNEL	TITLE	PERSONNEL	TITLE	COUNTY	DATE	WEATHER	TEMP.
Tomsic				Fulton	JUNE 1 1973		
Newser				S. R. U.S. 20			
Granata				SEC. FAYETTE O.			

DESCRIPTION	LEFT	CENTER LINE	RIGHT	JOB NO.
-------------	------	-------------	-------	---------

