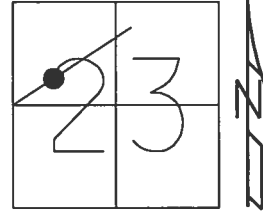


O.D.O.T. DISTRICT 2 SURVEY OFFICE (USE ONLY)

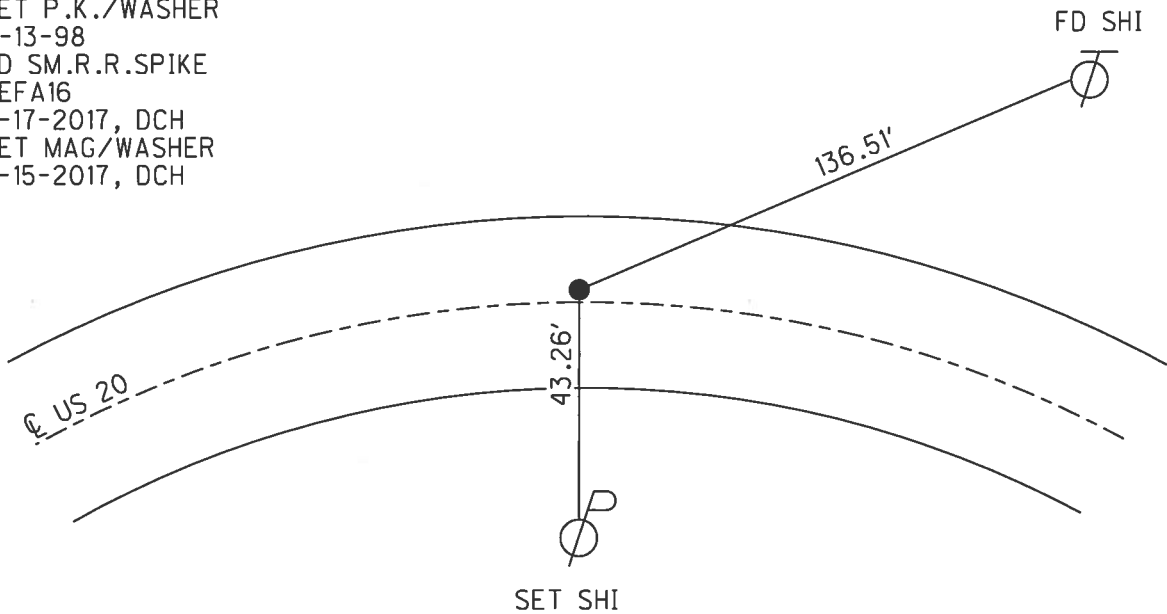
PERSONNEL	REFERENCE NO.	16 A	SHEET	27	OF	38
NOTES	LEU	DATE	4/18/17	ROUTE	US 20	
H.C.	HOMAN	WEATHER	SUNNY	COUNTY	FULTON	
R.C.	LEU	TEMP.	44°F	TOWNSHIP	GORHAM	
				SECTION	23	
				T	9	R
				S		E

TYPE MONUMENT SM.R.R.SPIKE
~~ON SURFACE~~ - BELOW 3 1/2"
 LEFT - ℄ PAV'T - RIGHT 1.5'
9.7 TO LT EDGE PAVEMENT
 S.L.M. 388+36



Grid: Northing: 736583.996 Easting: 1486086.911

RECORD: P.I.
 FD SM.R.R.SPIKE
 2" DEEP
 SET P.K./WASHER
 11-05-84, IRS
 P.K.NAIL
 5-7-98, SAH
 SET P.K./WASHER
 11-13-98
 FD SM.R.R.SPIKE
 REFA16
 4-17-2017, DCH
 SET MAG/WASHER
 8-15-2017, DCH



O.D.O.T. DISTRICT 2 SURVEY OFFICE

PERSONNEL

NOTES Huss
 H.C. VanNusen
 R.C. Cordes

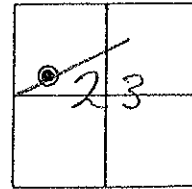
REFERENCE NO. 16-A

DATE 5-7-98
 WEATHER Pt Cldy - Fair
 TEMP. +62°F

SHEET 2 OF 11

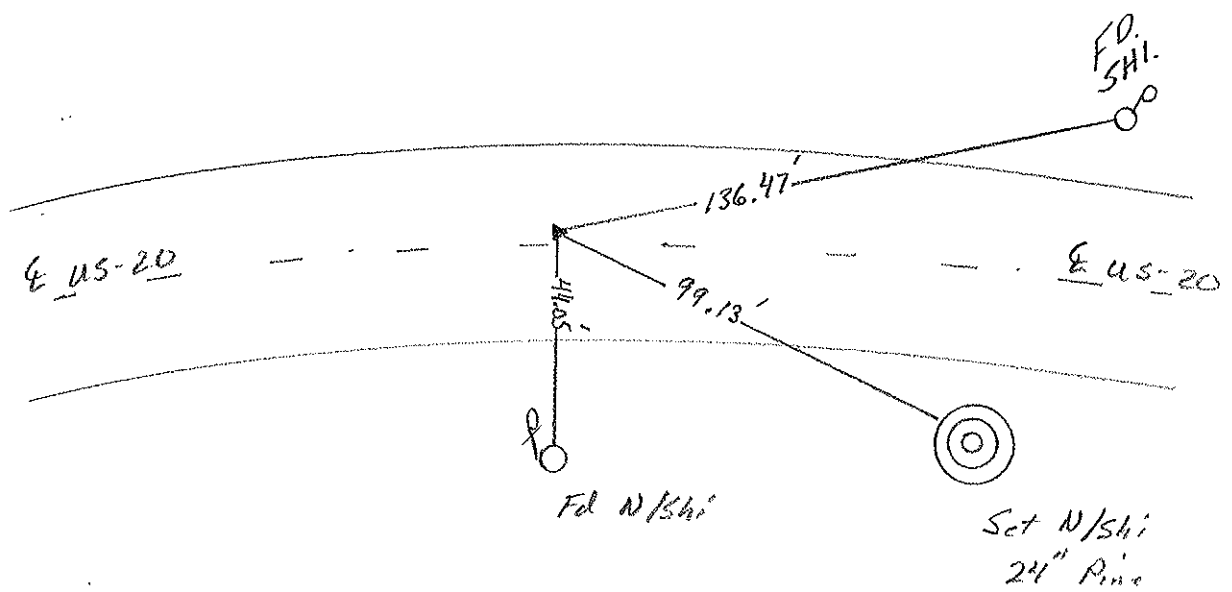
ROUTE US-20
 COUNTY Fulton
 TOWNSHIP Garham
 SECTION 23
 T 9 S R 1 E

TYPE MONUMENT PK NAIL
 ON SURFACE - ~~BELLOW~~ YES
 LEFT- ~~ADJACENT~~ RIGHT 1.5 Lt.
9.7 TO Lt. EDGE PAVEMENT
 S.L.M. 388+36



*Record: Fd Sm. RR Spt. 2" deep
 9.0' to N. EOP, 11.9' to S. Eop
 D to curve, set PK/w 11-05-84
 JRS*

*Set PK/w
 11-13-98*



County Fulton S.R. US #20

Township Go-ham

Section 23

T N, R E

Personnel I. Stone

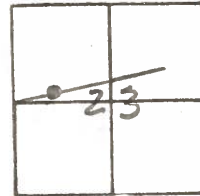
P. Neuser

R. Micholak

Date 27 July 84

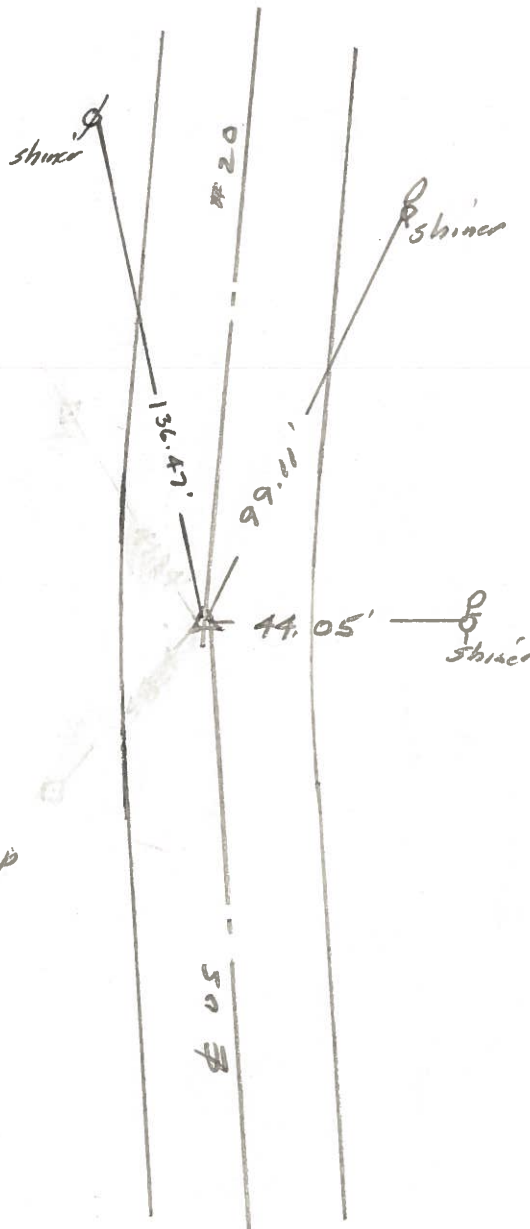
Weather Cloudy

Temp. 70°



SLM STA. 388+36

REF. No. 16-A



Fd. Small RR Spk. 2" deep
 9.0' To N. edge put,
 11.9' To S. edge put,
 Δ To curve
 Set RR Nail 11/05/84

PERSONNEL	TITLE	PERSONNEL	TITLE	COUNTY	Fulton	DATE	JUNE 5, 1973
Tomsic				S. R.	U.S. 20	WEATHER	
Neuser				SEC.	Gorham TWP.	TEMP.	
Granata							

DESCRIPTION	LEFT	CENTER LINE	RIGHT	JOB NO.
-------------	------	-------------	-------	---------

