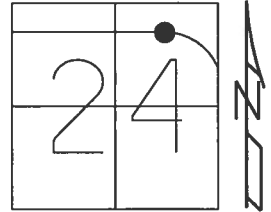


O.D.O.T. DISTRICT 2 SURVEY OFFICE (USE ONLY)

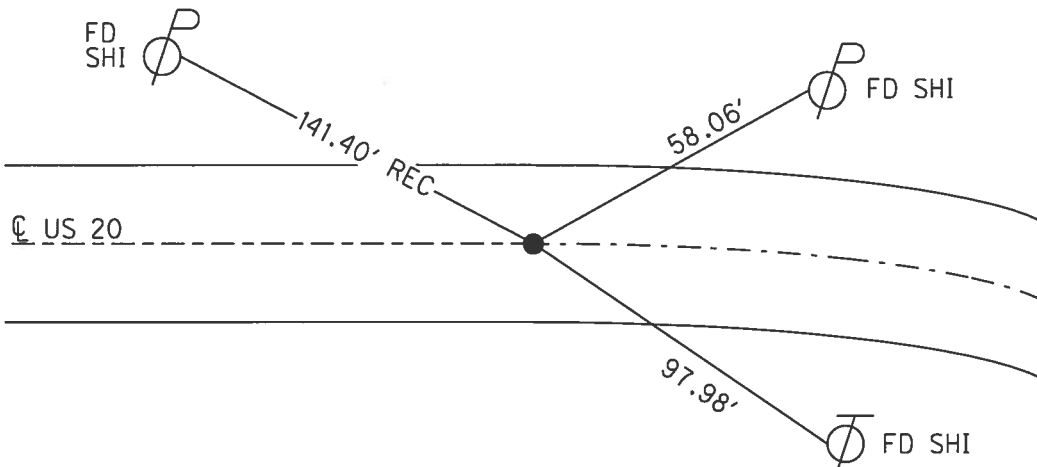
PERSONNEL _____ REFERENCE NO. 19 SHEET 32 OF 38
 NOTES LEU DATE 4/18/17 ROUTE US 20
 H.C. HOMAN WEATHER SUNNY COUNTY FULTON
 R.C. LEU TEMP. 55°F TOWNSHIP GORHAM
 _____ SECTION 24
 _____ T 9 S R 1 E

TYPE MONUMENT 1" IPIPE
~~ON SURFACE~~ - BELOW 3 1/2"
 LEFT - ☉ PAV'T - ~~RIGHT~~ 0.2
11.0 TO LT EDGE PAVEMENT
 S.L.M. 477+47



Grid: Northing: 737602.311 Easting: 1494872.569

RECORD: P.C.
 1934 STA.177+32.24
 FD 1" IPIPE
 2" DOWN
 STA.STA 477+76
 7-24-84, IRS
 FD SM.R.R.SPIKE
 5-8-98, SAH
 SET P.K./WASHER
 11-16-98, SAH
 FD 1" IPIPE
 REF19
 4-18-2017, DCH
 SET MAG/WASHER
 8-15-2017, DCH



O.D.O.T. DISTRICT 2 SURVEY OFFICE

PERSONNEL

REFERENCE NO. 19

SHEET 6 OF 11

NOTES Huss

H.C. Van Dusen

R.C. Cordes

DATE 5-8-98

WEATHER Cldy - Rain

TEMP. +62°F

ROUTE US-20

COUNTY Fulton

TOWNSHIP Gorham

SECTION 24

T 9 S R 1 E

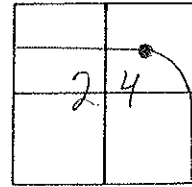
TYPE MONUMENT SMALL R.R. SPK.

ON SURFACE - ~~BELOW~~ YES

LEFT - ~~RIGHT~~ - ~~RIGHT~~ 0.2 Lt. of G

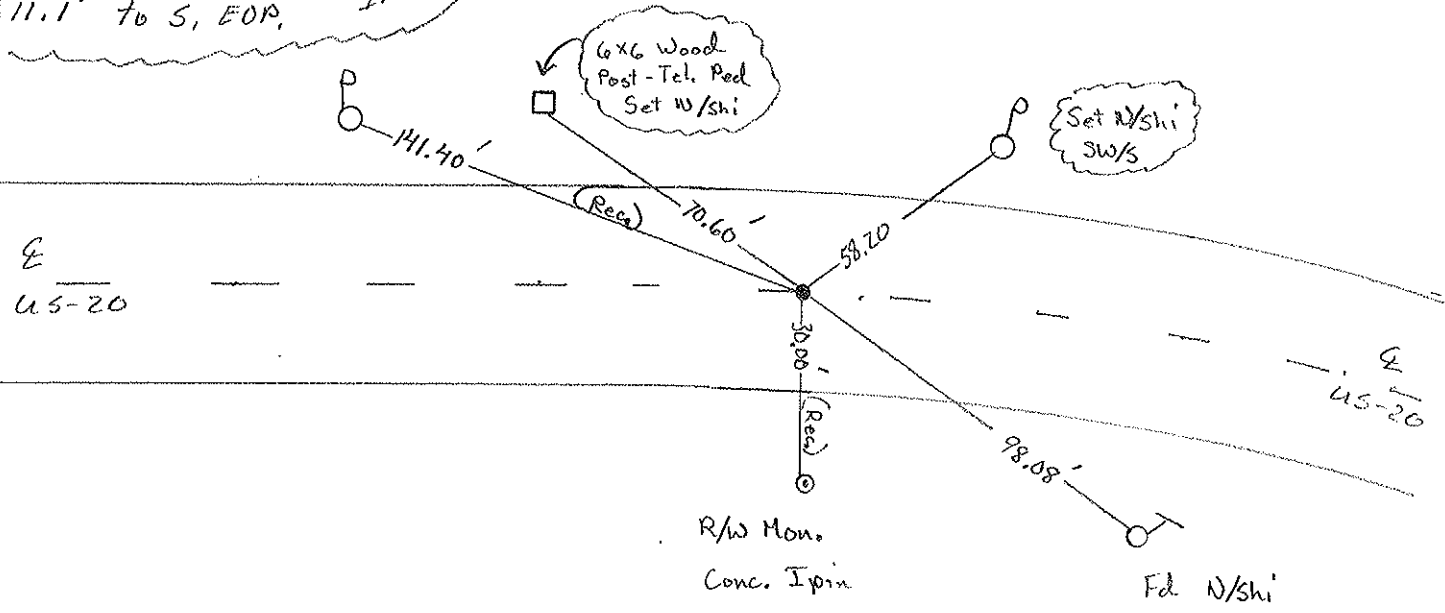
11.0 TO Lt. EDGE PAVEMENT

S.L.M. 14 + 553.2 SLK / 477 + 47 SLM



Recond
 Fd 1" I. Pipe 2" deep
 P.C. 1934 Sta 177+32.24
 SLM Sta. 477+76.0'⁸⁴
 10.2' to N. EOP 7-24-84
 11.1' to S. EOP. IRS

Set PK/W ^{SPK}
 11-16-98



O.D.O.T. DISTRICT 2 SURVEY OFFICE

SHEET 2 OF 4

County Fulton S.R. US #20

Date 1 Sept. 82

Township Gorham

Weather Cloudy

Section 24

Temp. 70°

T N, R E

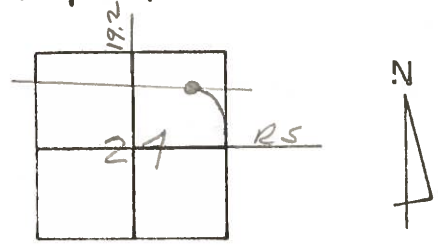
Personnel J. Stone

P. Neuser

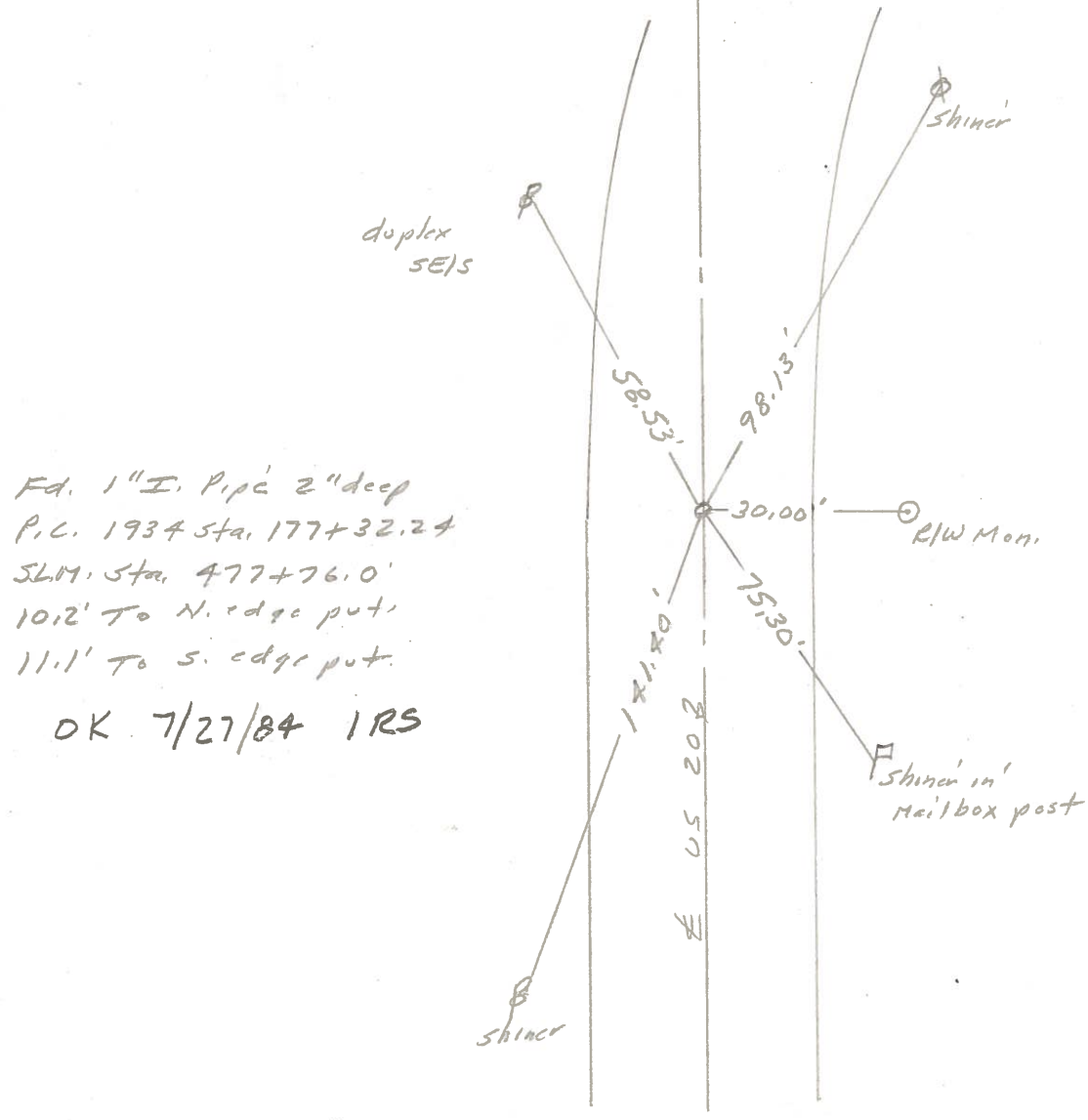
R. Michalak

D. Curtis

19



REF. No. 19



Fd. 1" I. Pipe 2" deep
P.C. 1934 Sta. 177+32.24
S.M. Sta. 477+76.0'
10.2' To N. edge put.
11.1' To S. edge put.

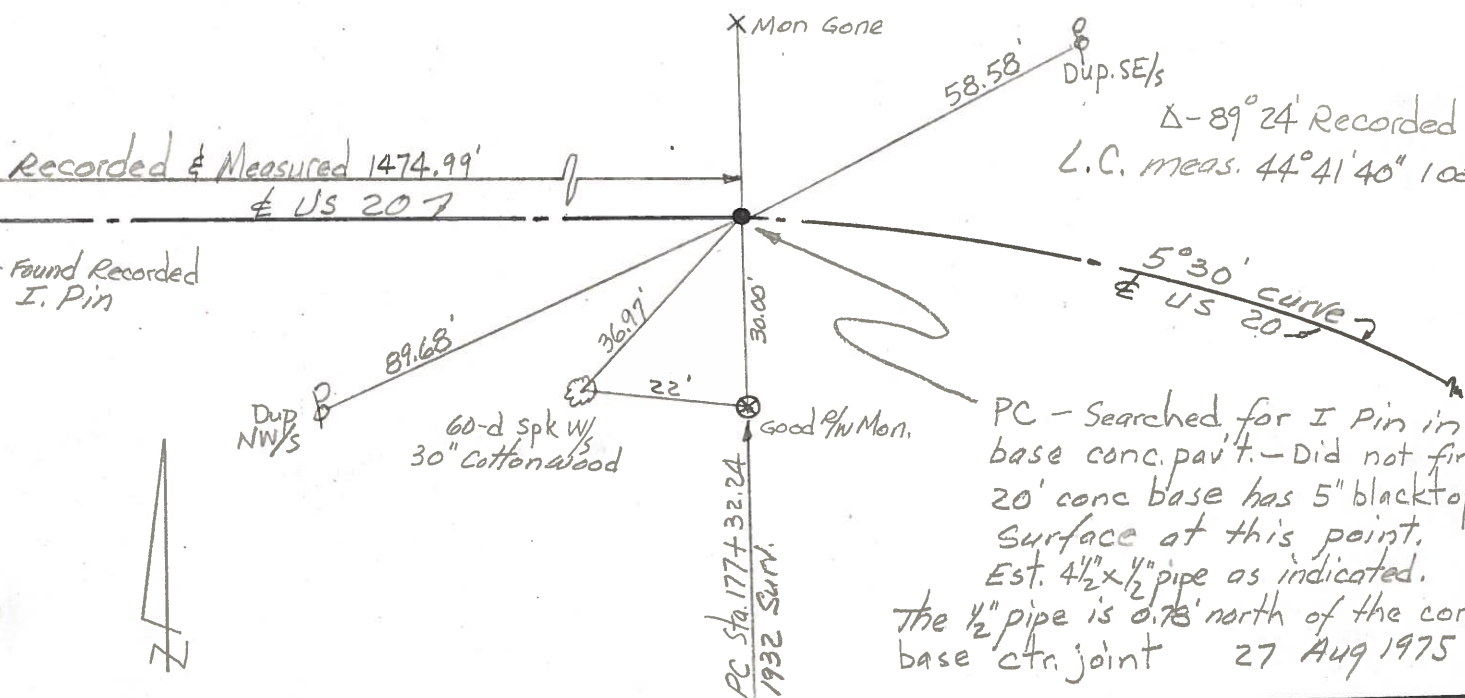
OK 7/27/84 IRS

PERSONNEL	TITLE	PERSONNEL	TITLE	COUNTY	DATE
Red Beach				Fulton	Aug 75
W. Krape				US 20	
				SEC. 24 Gorham R-1-E	TEMP
DESCRIPTION CONTROL POINTS				JOB NO.	

Co Rd # 192

19

Qtr. Line Sec. 24



20

