

O.D.O.T. DISTRICT 2 SURVEY OFFICE (USE ONLY)

PERSONNEL

REFERENCE NO. 25

SHEET 1 OF 3

NOTES LEU

DATE 7-5-18

ROUTE US 20

H.C. LEU

WEATHER PT.CLOUDY,FAIR

COUNTY FULTON

R.C. HAGEMEYER

TEMP. 80°F

TOWNSHIP CHESTERFIELD

DWG BY JAMES

PID 101272

SECTION 20

T 9 N R 2 E

TYPE MONUMENT P.K./WASHER

ON SURFACE - ~~BELOW~~ ON

OFFSET Q PAVEMENT 0.7' ~~±~~ : RT

10.5' TO RT EDGE PAVEMENT

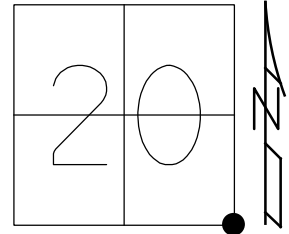
STATION: 626+22

HORIZ.DATUM: NAD83 2011

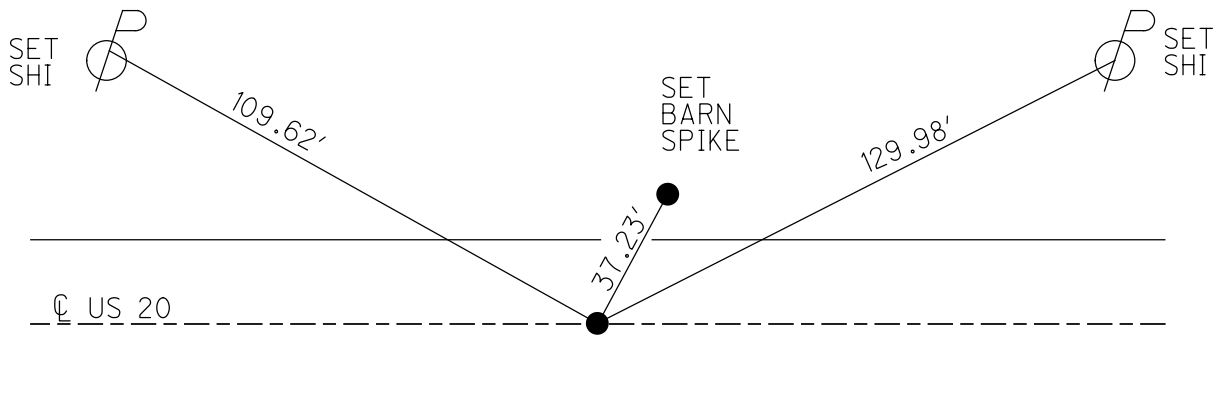
GEOID: NAVD88 2012A

GRID: NORTHING: 733675.240

EASTING: 1506474.210



RECORD:
POSSIBLE
SEC.COR.
SET PK/WASHER
8-28-00, SAH
FD PK/WASHER
CP1
1-29-13, DH
FD PK/WASHER
REF25
7-5-18, JLL
SET MAG/WASHER
4-9-16, JLL



O.D.O.T. DISTRICT 2 SURVEY OFFICE (USE ONLY)

PERSONNEL _____ REFERENCE NO. 25 SHEET 1 OF 5

NOTES HUSS DATE 7/17/00 ROUTE US 20

H.C. CORDES WEATHER PT.CLOUDY,FAIR COUNTY FULTON

R.C. KARGER TEMP. 72° TOWNSHIP CHESTERFIELD

SECTION 20,21,28,29

T 9 S R 2 E

TYPE MONUMENT P.K./WASHER

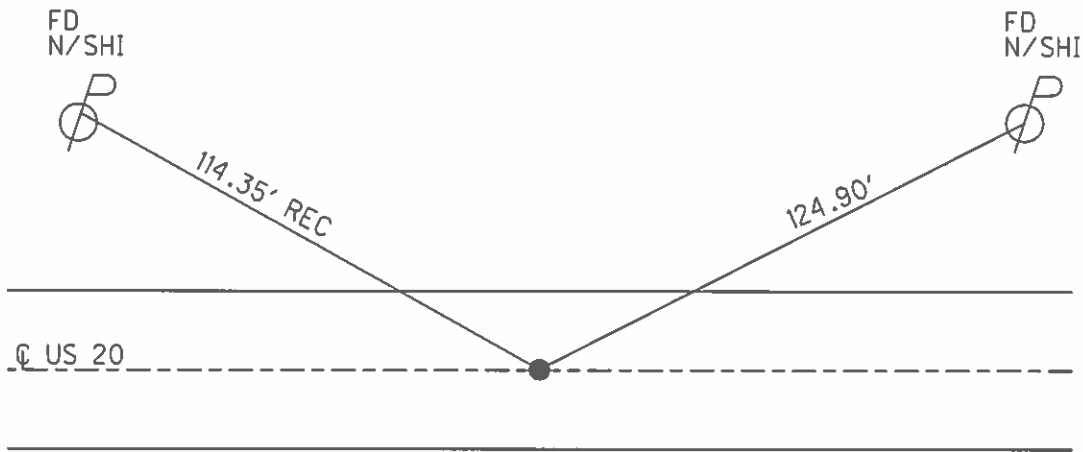
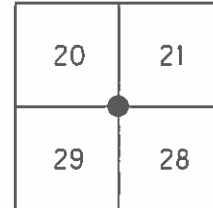
ON SURFACE - ~~BELOW~~ ON

LEFT - ☉ PAV'T - RIGHT ON

11' TO RT EDGE PAVEMENT

S.L.M. 626+22

GRID: NORTHING: _____ EASTING: _____



RECORD:
POSSIBLE
SEC.COR.

SET P.K./WASHER
8/28/00, SAH

O.D.O.T. DISTRICT 2 SURVEY OFFICE

PERSONNEL

REFERENCE NO. 25

SHEET 1 OF 4

NOTES Huss

H.C. Condes

R.C. Karsen

DATE 7-19-00

WEATHER Pt Cldy - Fair

TEMP. +72°F

ROUTE U.S. 20

COUNTY FULTON

TOWNSHIP CHESTERFIELD

SECTION 20-21-28-29

T 9 S R 2 E

TYPE MONUMENT PK/W

ON SURFACE - ~~BENLOW~~ Surf

~~NEED~~ Q PAVT - ~~PAVT~~ Q Paut.

11' TO RT. EDGE PAVEMENT

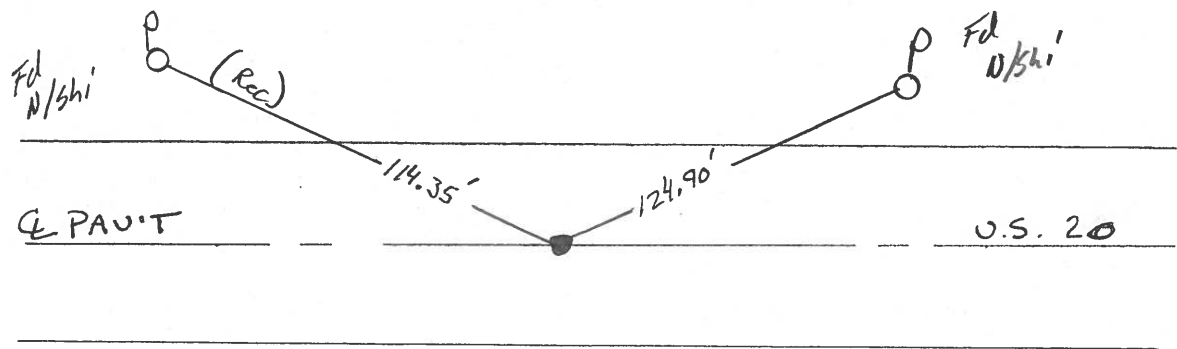
S.L.M. 626+22

20	21
29	28



Recover:
Possible Sec
Corner

Set PK/W
8-28-00
SAH



Resurfaced 2000

O.D.O.T. DISTRICT 2 SURVEY OFFICE

PERSONNEL

REFERENCE NO. 25

SHEET 23 OF

NOTES D. CURTIS

H.C. J. HOUSEHOLDER

R.C.

DATE 5-13-88

WEATHER MILD

TEMP. 75° ±

ROUTE U.S. #20

COUNTY FULTON

TOWNSHIP CHESTERFIELD

SECTION 20-21-28-29

T R

TYPE MONUMENT P.K. NAIL

~~ON~~ SURFACE - BELOW 2" BELOW

LEFT- & PAV'T. - RIGHT & PAV'T.

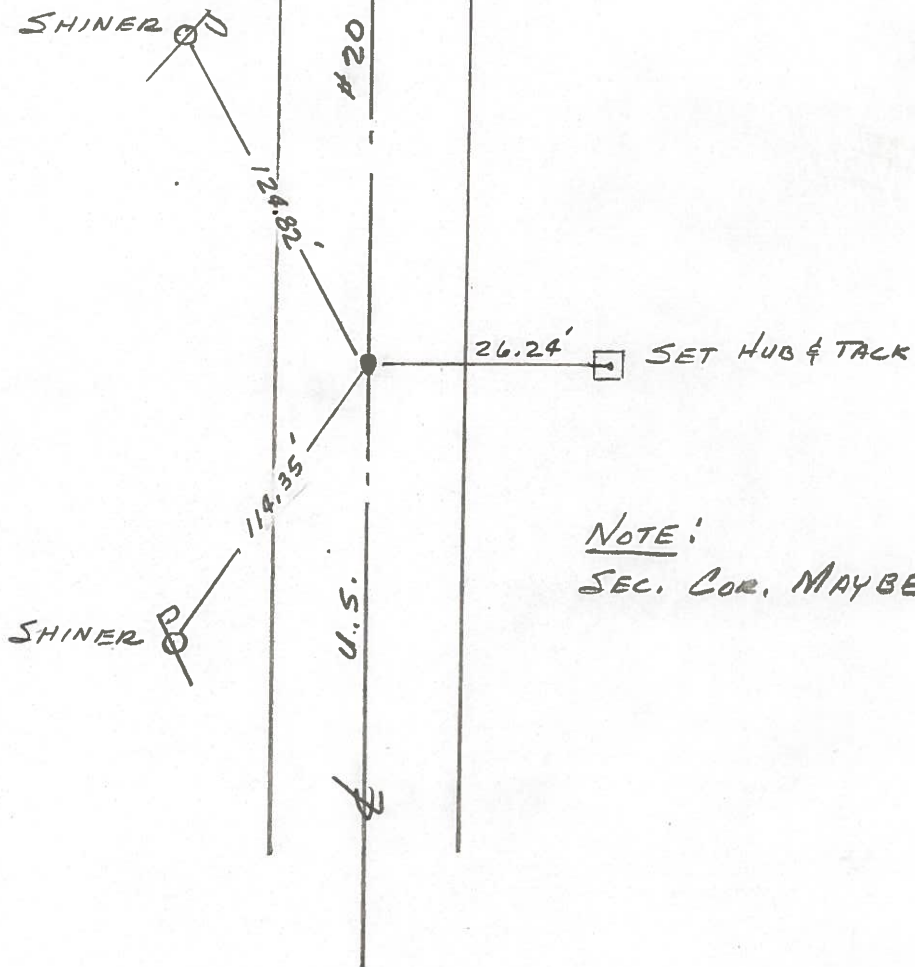
 TO EDGE PAVEMENT

S.L.M. 626 +02

20	21
29	28



SET P.K. NAIL TO SURFACE
6-17-88



NOTE:
SEC. COR. MAYBE

County Fulton S.R. 05 #20

Township Chesterfield

Section 20

T N, R E

Personnel L. Stone

P. Neuser

R. Michalak

D. Curtis

Date 19 May 82

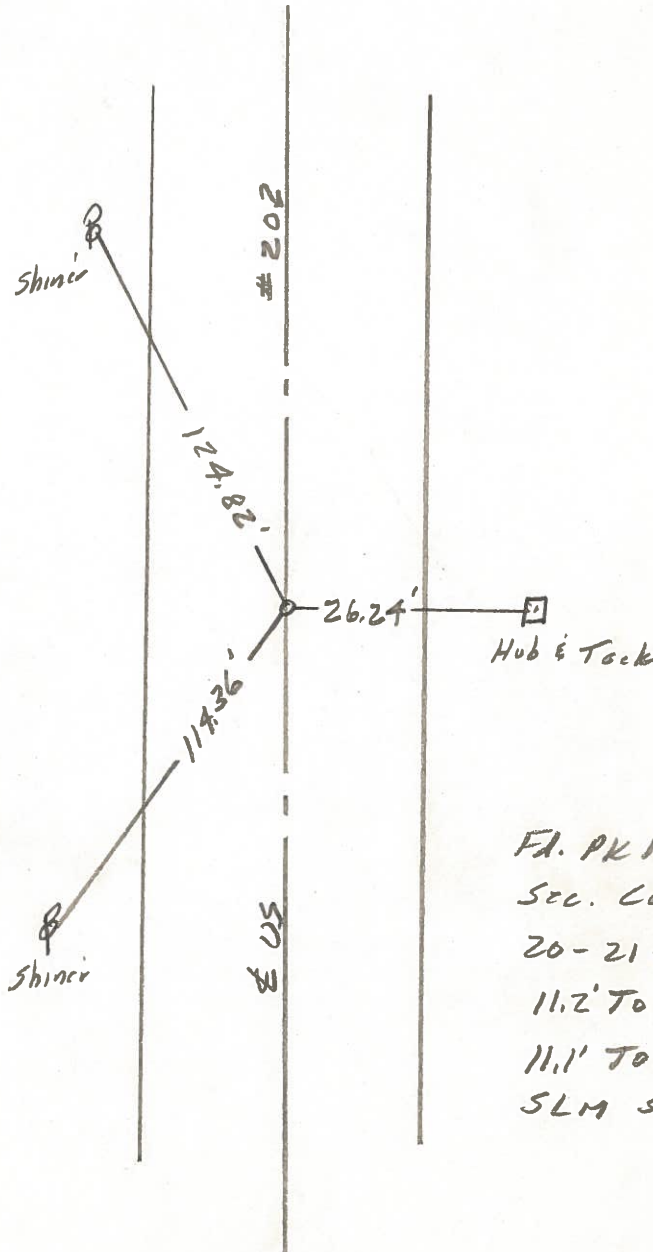
Weather Warm

Temp. 75°

20	21
29	28



REF. NO. 25



Fl. PK Nail To 2" deep
 Sec. Cor. Maybe
 20-21-28-29
 11.2' To N. edge put.
 11.1' To S. edge put.
 SLM Sta. 625+65