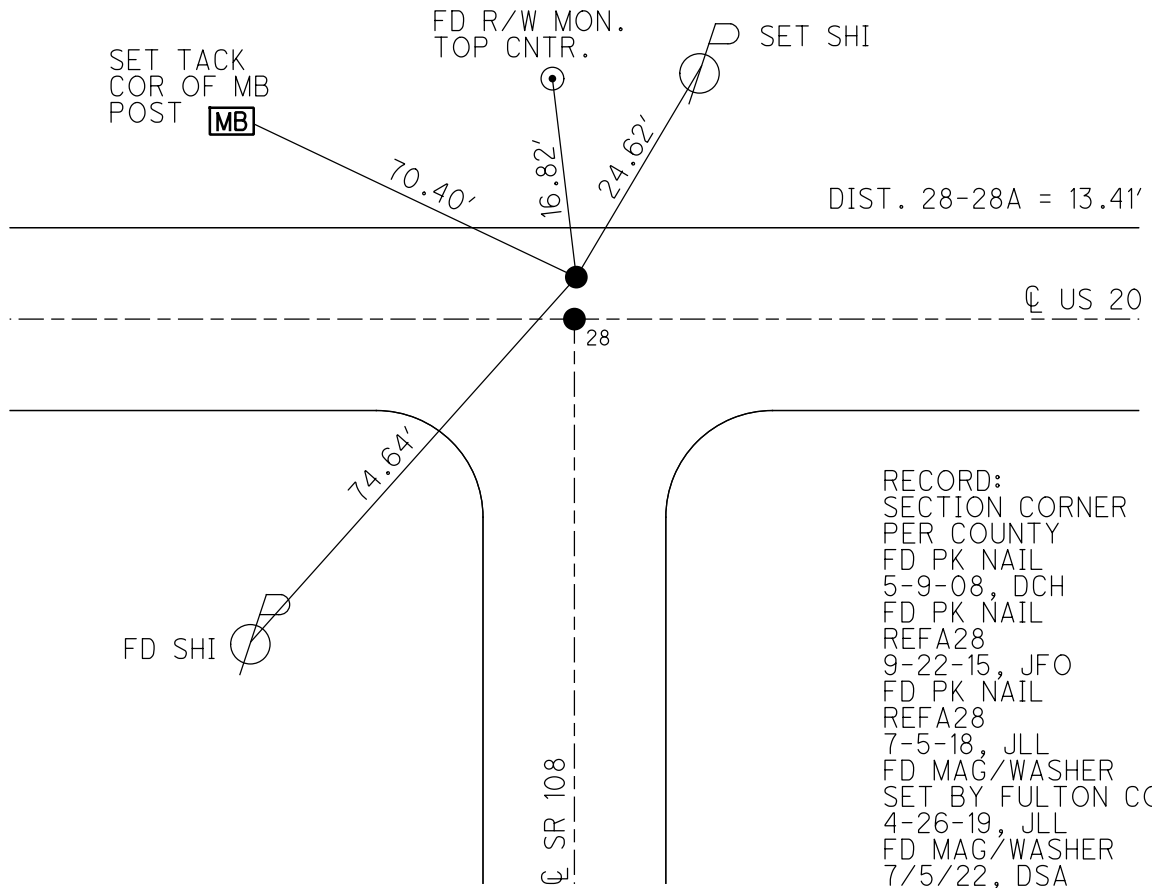
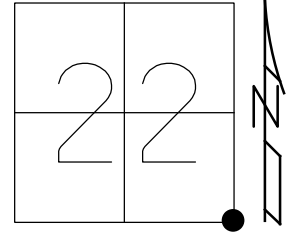


O.D.O.T. DISTRICT 2 SURVEY OFFICE (USE ONLY)

PERSONNEL _____ REFERENCE NO. 28 A SHEET 3 OF 21
 NOTES HAGEMEYER DATE 7-5-18 ROUTE US 20
 H.C. LEU WEATHER SUNNY/HUMID COUNTY FULTON
 R.C. HAGEMEYER TEMP. 86°F TOWNSHIP CHESTERFIELD
 DWG BY JAMES PID 101272 SECTION 22
 T 9 N R 2 E

TYPE MONUMENT P.K. NAIL
 ON SURFACE - ~~BELOW~~ ON
 OFFSET \odot PAVEMENT 13.7' ~~LT~~ : RT
12.7' TO LT EDGE PAVEMENT
 STATION: 726+51.58

HORZ. DATUM: NAD83 2011 GEOID: NAVD88 2012A
 GRID: NORTHING: 733782.180 EASTING: 1517060.132



RECORD:
 SECTION CORNER
 PER COUNTY
 FD PK NAIL
 5-9-08, DCH
 FD PK NAIL
 REFA28
 9-22-15, JFO
 FD PK NAIL
 REFA28
 7-5-18, JLL
 FD MAG/WASHER
 SET BY FULTON CO.
 4-26-19, JLL
 FD MAG/WASHER
 7/5/22, DSA

O.D.O.T. DISTRICT 2 SURVEY OFFICE (USE ONLY)

PERSONNEL

REFERENCE NO. 28 A

SHEET 3 OF 21

NOTES HAGEMeyer

DATE 7-5-18

ROUTE US 20

H.C. LEU

WEATHER SUNNY/HUMID

COUNTY FULTON

R.C. HAGEMeyer

TEMP. 86°F

TOWNSHIP CHESTERFIELD

DWG BY JAMES PID 101272

SECTION 22

T 9 N R 2 E

TYPE MONUMENT P.K. NAIL

ON SURFACE - ~~BELOW~~ ON

OFFSET 13.7' LT : RT

12.7' TO LT EDGE PAVEMENT

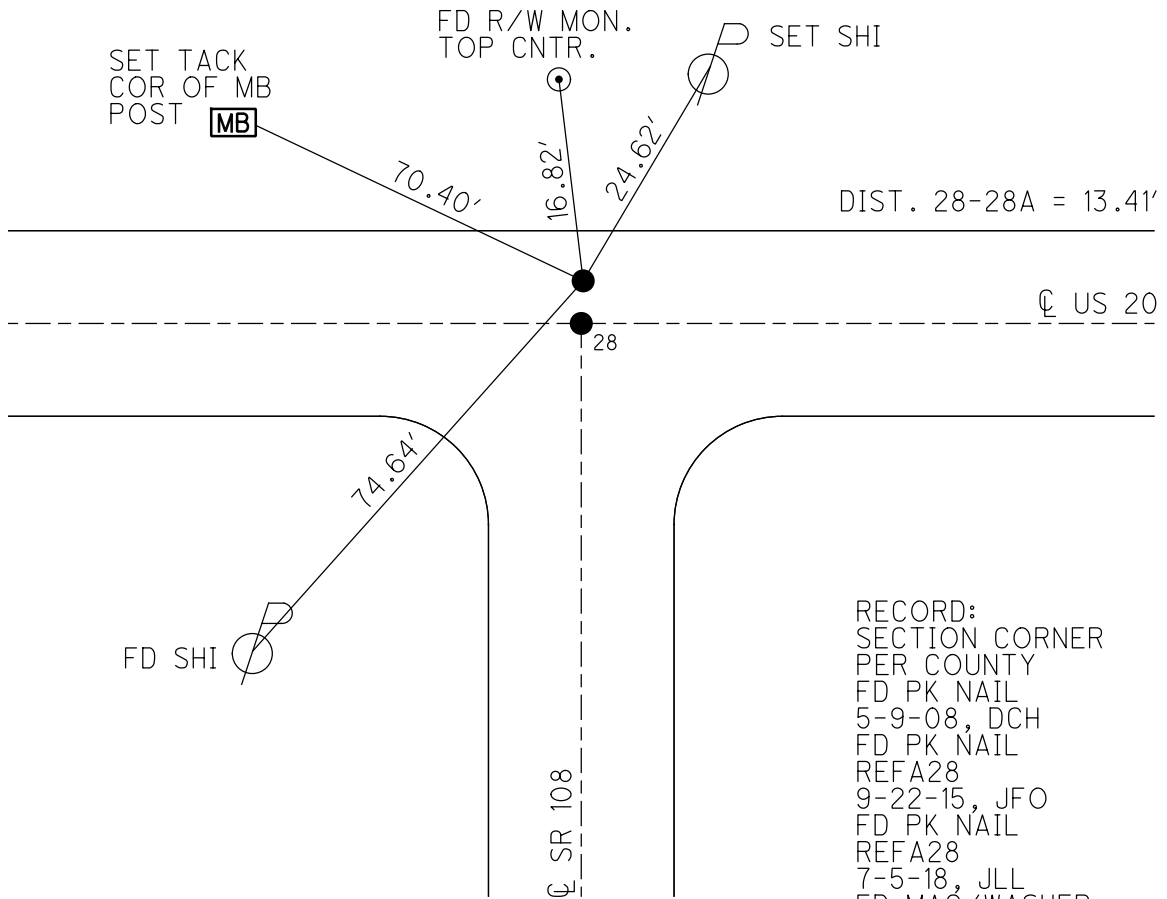
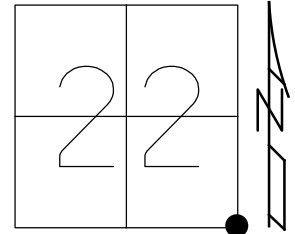
STATION: 726+51.58

HORZ.DATUM: NAD83 2011

GEOID: NAVD88 2012A

GRID: NORTHING: 733782.180

EASTING: 1517060.132

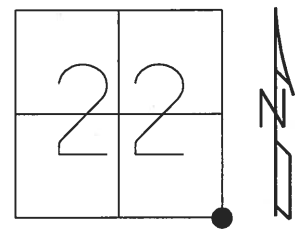


RECORD:
SECTION CORNER
PER COUNTY
FD PK NAIL
5-9-08, DCH
FD PK NAIL
REFA28
9-22-15, JFO
FD PK NAIL
REFA28
7-5-18, JLL
FD MAG/WASHER
SET BY FULTON CO.
4-26-19, JLL

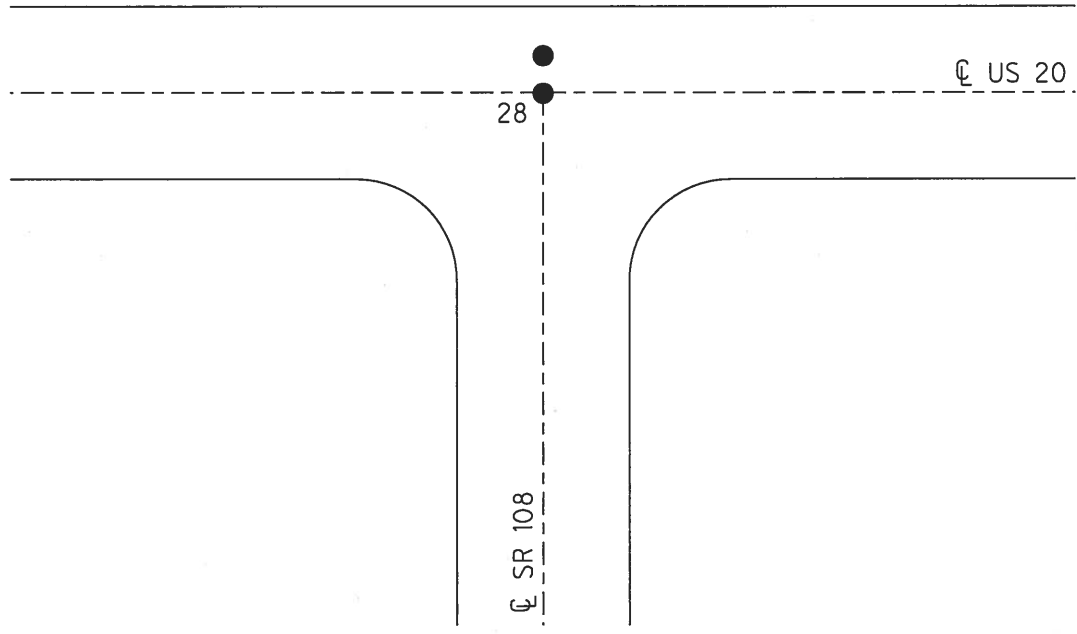
O.D.O.T. DISTRICT 2 SURVEY OFFICE (USE ONLY)

PERSONNEL _____ REFERENCE NO. 28 A SHEET 3 OF 21
 NOTES HOMAN DATE 5/9/09 ROUTE US 20
 H.C. HOMAN WEATHER CLOUDY COUNTY FULTON
 R.C. ROUSOS TEMP. 58° TOWNSHIP CHESTERFIELD
 _____ SECTION 22
 _____ T 9 S R 2 E

TYPE MONUMENT _____ P.K. NAIL _____
 ON SURFACE - ~~BELOW~~ _____ ON _____
~~LEFT - C~~ PAV'T - ~~RIGHT~~ _____ ON _____
 _____ TO _____ EDGE PAVEMENT
 S.L.M. 726+51.58
 GRID: NORTHING: 733782.159 EASTING: 1517060.150



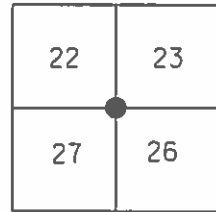
RECORD:
 SECTION CORNER
 PER COUNTY
 FD. P.K. NAIL
 5-9-08, DCH
 FD P.K. NAIL
 REFA28
 9-22-15, JFO



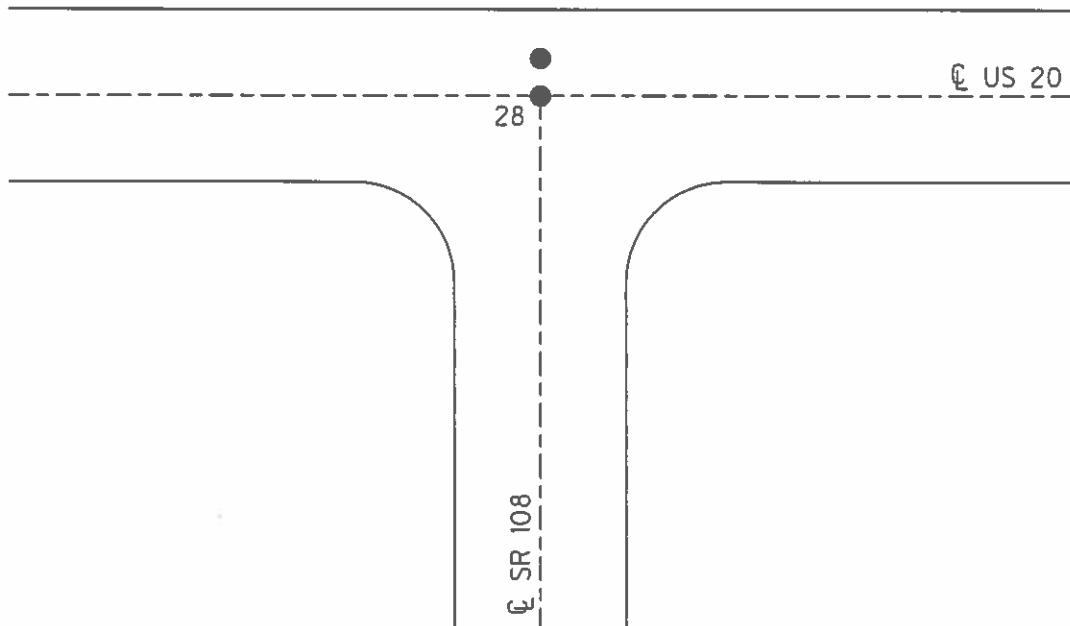
O.D.O.T. DISTRICT 2 SURVEY OFFICE (USE ONLY)

PERSONNEL _____ REFERENCE NO. 28 A SHEET 5 OF 5
 NOTES HOMAN DATE 5/9/09 ROUTE US 20
 H.C. HOMAN WEATHER CLOUDY COUNTY FULTON
 R.C. ROUSOS TEMP. 58 TOWNSHIP CHESTERFIELD
 _____ SECTION 22-23-26-27
 _____ T 9 S R 2 E

TYPE MONUMENT P.K.NAIL
 ON SURFACE - ~~BELOW~~ ON
~~LEFT~~ - ℄ PAV'T - ~~RIGHT~~ ON
 _____ TO _____ EDGE PAVEMENT
 S.L.M. 726+52.80
 GRID: NORTHING: 733782.088 EASTING: 1517060.052



SECTION CORNER
 PER COUNTY
 FND. PK
 5-9-08
 DCH



County FULTON S.R. U.S. 20

Date 3-10-80

Township CHESTERFIELD

Weather CLEAR

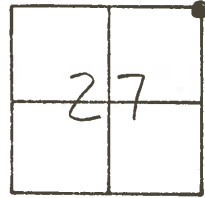
Section 27

Temp. +30°

T9 R2E

Personnel BOWERS

MEAD



#28 A Sta 732+52

Jct. S.R. 108 South &
U.S. 20

P.K. NAIL & SHINER

RE-SET P.K.
8-22-80
BOWERS

