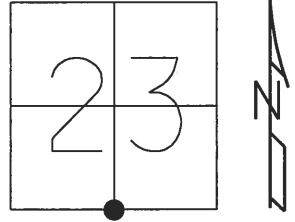


O.D.O.T. DISTRICT 2 SURVEY OFFICE (USE ONLY)

PERSONNEL _____ REFERENCE NO. 29 SHEET 4 OF 21

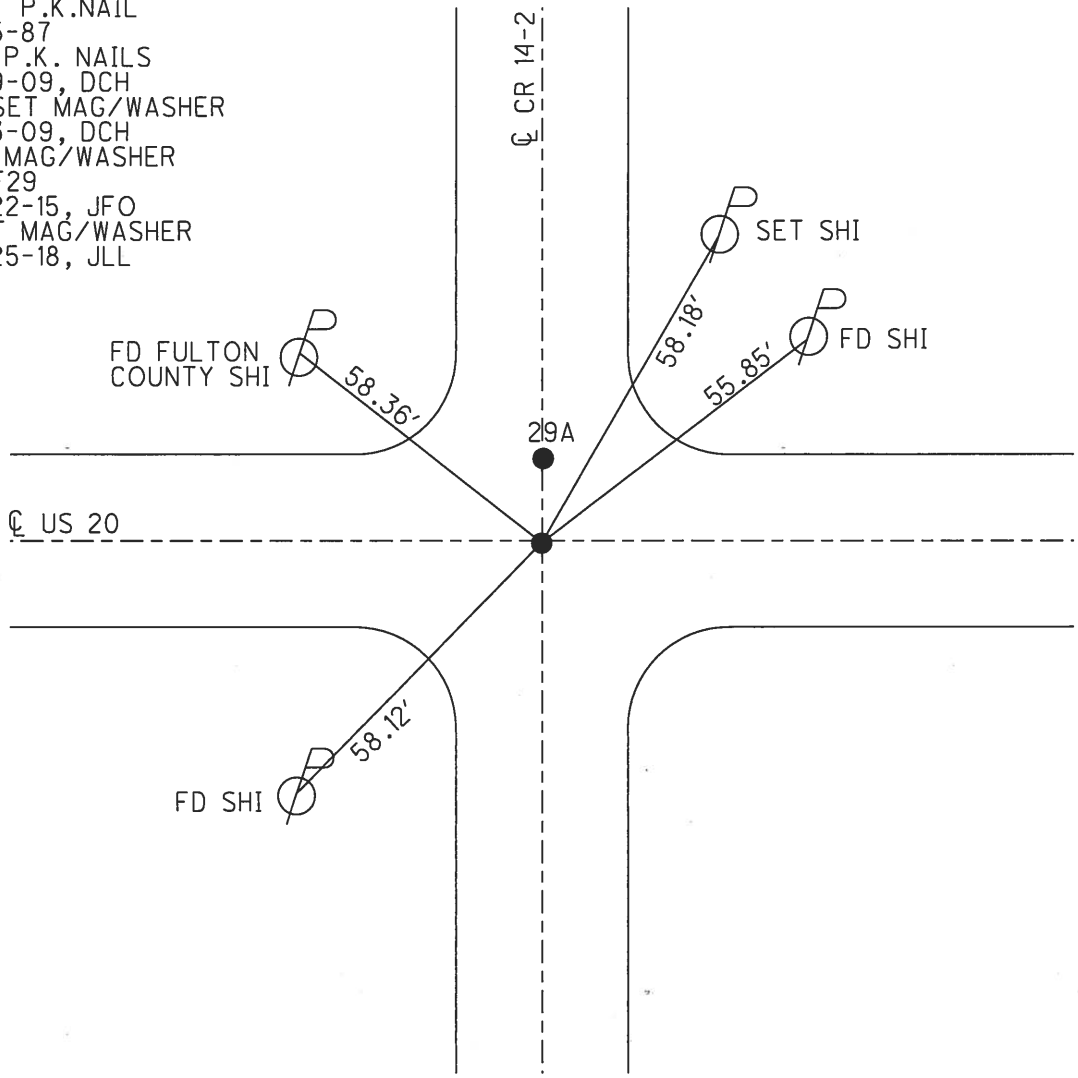
NOTES ROUSOS DATE 5/26/09 ROUTE US 20
 H.C. HOMAN WEATHER CLEAR COUNTY FULTON
 R.C. ROUSOS TEMP. 68° TOWNSHIP CHESTERFIELD
 _____ SECTION 26
 _____ T 9 S R 2 E

TYPE MONUMENT _____ P.K.NAIL _____
 ON SURFACE - ~~BELOW~~ _____ ON _____
~~LEFT~~ - Q PAV'T - ~~RIGHT~~ _____ ON _____
 _____ TO _____ EDGE PAVEMENT
 S.L.M. 752+95.88
 GRID: NORTHING: 733796.370 EASTING: 1519704.500



29 TO 29A = 19.89'

SET P.K.NAIL
 8-5-87
 FD P.K. NAILS
 5-9-09, DCH
 RESET MAG/WASHER
 8-3-09, DCH
 FD MAG/WASHER
 REF29
 9-22-15, JFO
 SET MAG/WASHER
 6-25-18, JLL



O.D.O.T. DISTRICT 2 SURVEY OFFICE (USE ONLY)

PERSONNEL _____ REFERENCE NO. 29 SHEET 1 OF 17

NOTES ROUSOS DATE 5/26/09 ROUTE US 20

H.C. HOMAN WEATHER CLEAR COUNTY FULTON

R.C. ROUSOS TEMP. 68° TOWNSHIP CHESTERFIELD

SECTION 26

T 9 S R 2 E

TYPE MONUMENT P.K.NAIL

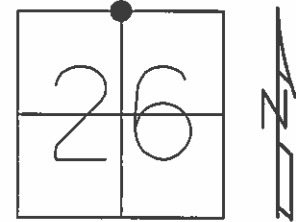
ON SURFACE - ~~BELOW~~ ON _____

LEFT - ☉ PAV'T - RIGHT ON _____

_____ TO _____ EDGE PAVEMENT

S.L.M. 752+95.88

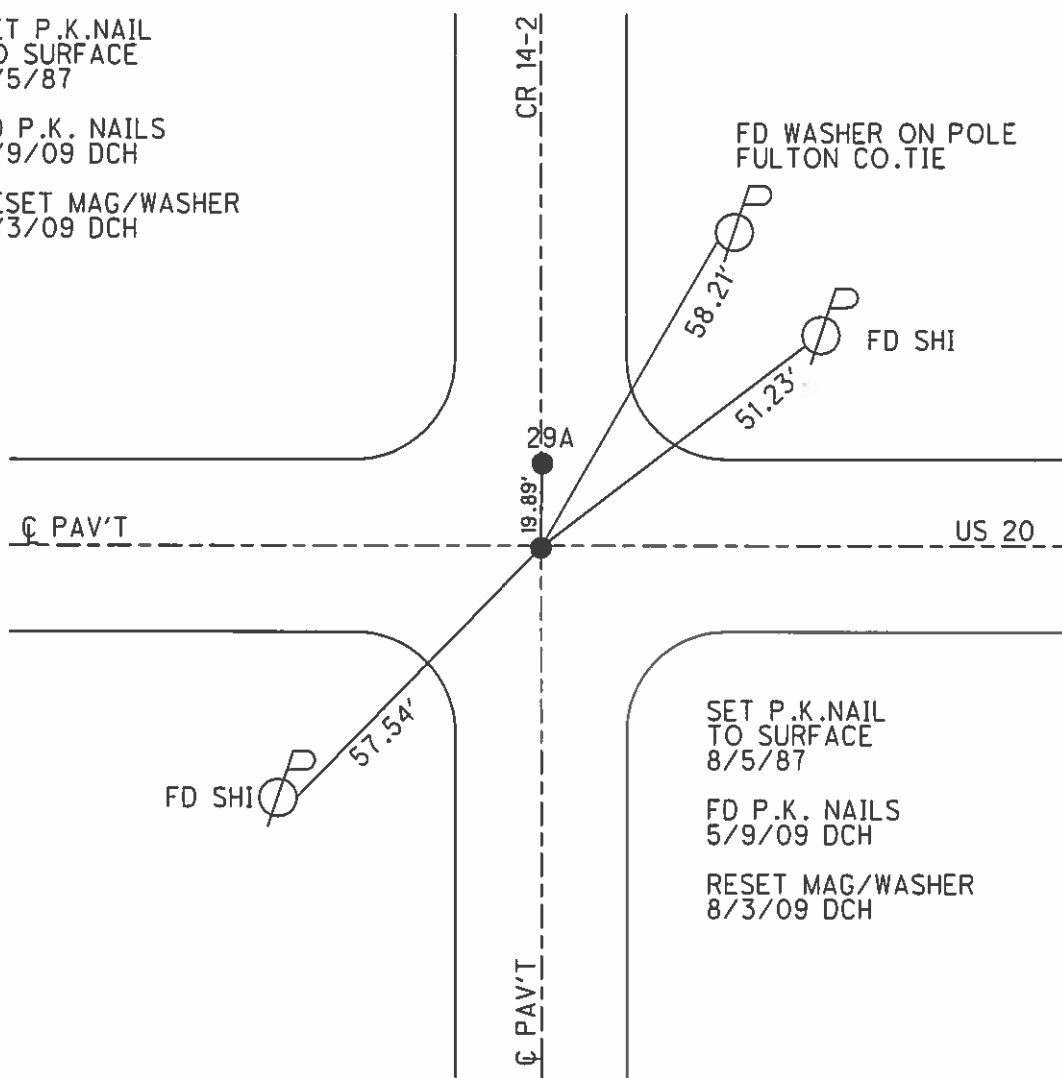
GRID: NORTHING: 733796.290 EASTING: 1519704.399



SET P.K.NAIL
TO SURFACE
8/5/87

FD P.K. NAILS
5/9/09 DCH

RESET MAG/WASHER
8/3/09 DCH



SET P.K.NAIL
TO SURFACE
8/5/87

FD P.K. NAILS
5/9/09 DCH

RESET MAG/WASHER
8/3/09 DCH

O.D.O.T. DISTRICT 2 SURVEY OFFICE

PERSONNEL

REFERENCE NO. 29

SHEET 1 OF 12

NOTES J. Householder

H.C. D. Curtis

DATE March 5, 1986

ROUTE U.S. 20

R.C. I. Stone

WEATHER Cloudy

COUNTY Fulton

R. Michalak

TEMP. 35°

TOWNSHIP Chesterfield

SECTION 26

T. R.

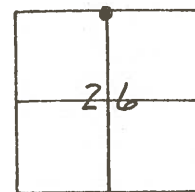
TYPE MONUMENT P.K. NAIL

ON SURFACE - BELOW Surface

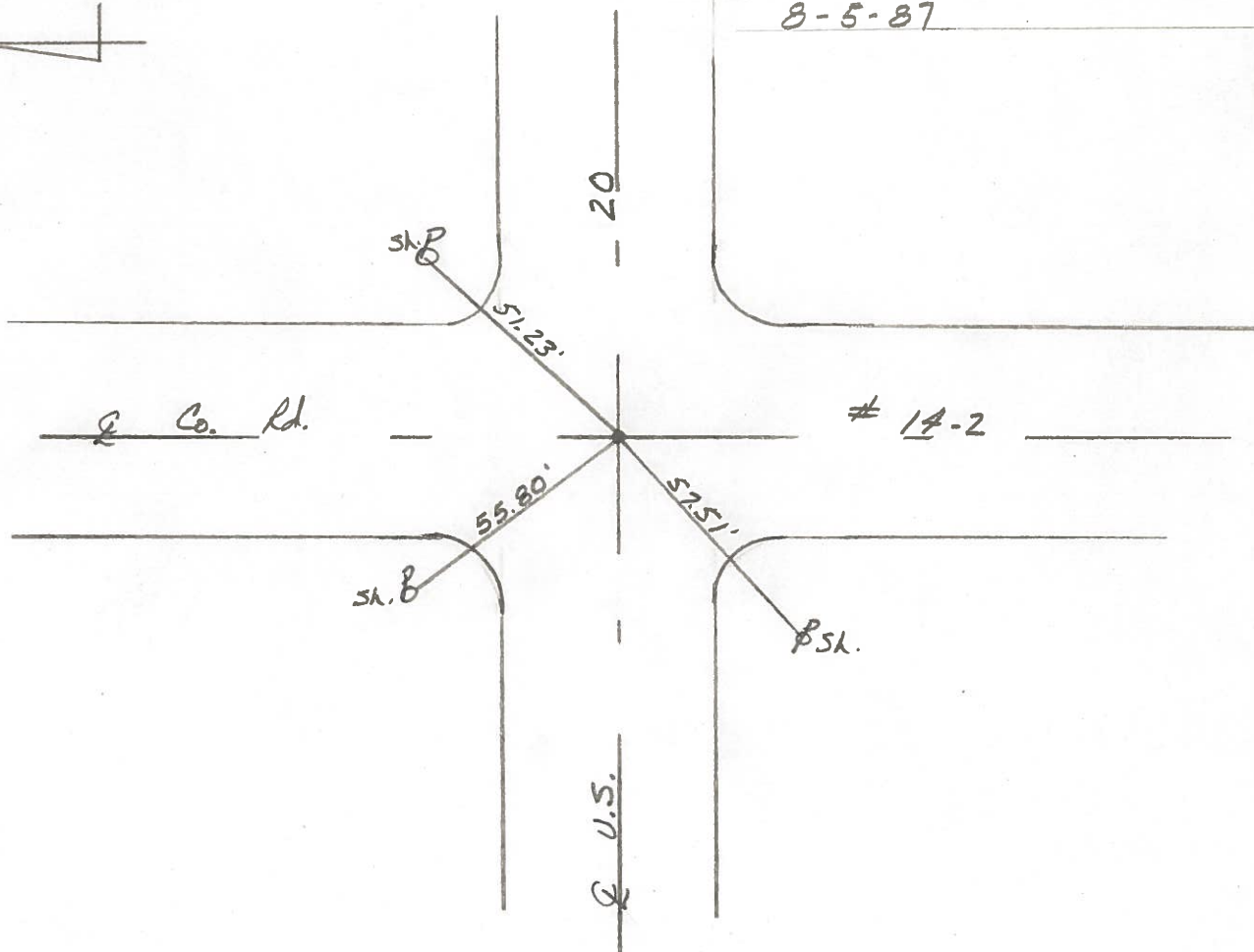
LEFT - PAV'T. - RIGHT

 TO EDGE PAVEMENT

S.L.M. 758 + 76



SET P.K. NAIL TO SURFACE
8-5-87



County FULTON ~~S.R.~~ U.S. 20

Date 3-10-80

Township CHESTERFIELD

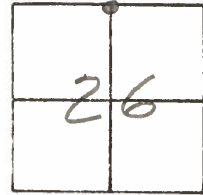
Weather CLEAR

Section 26

Temp. +30°

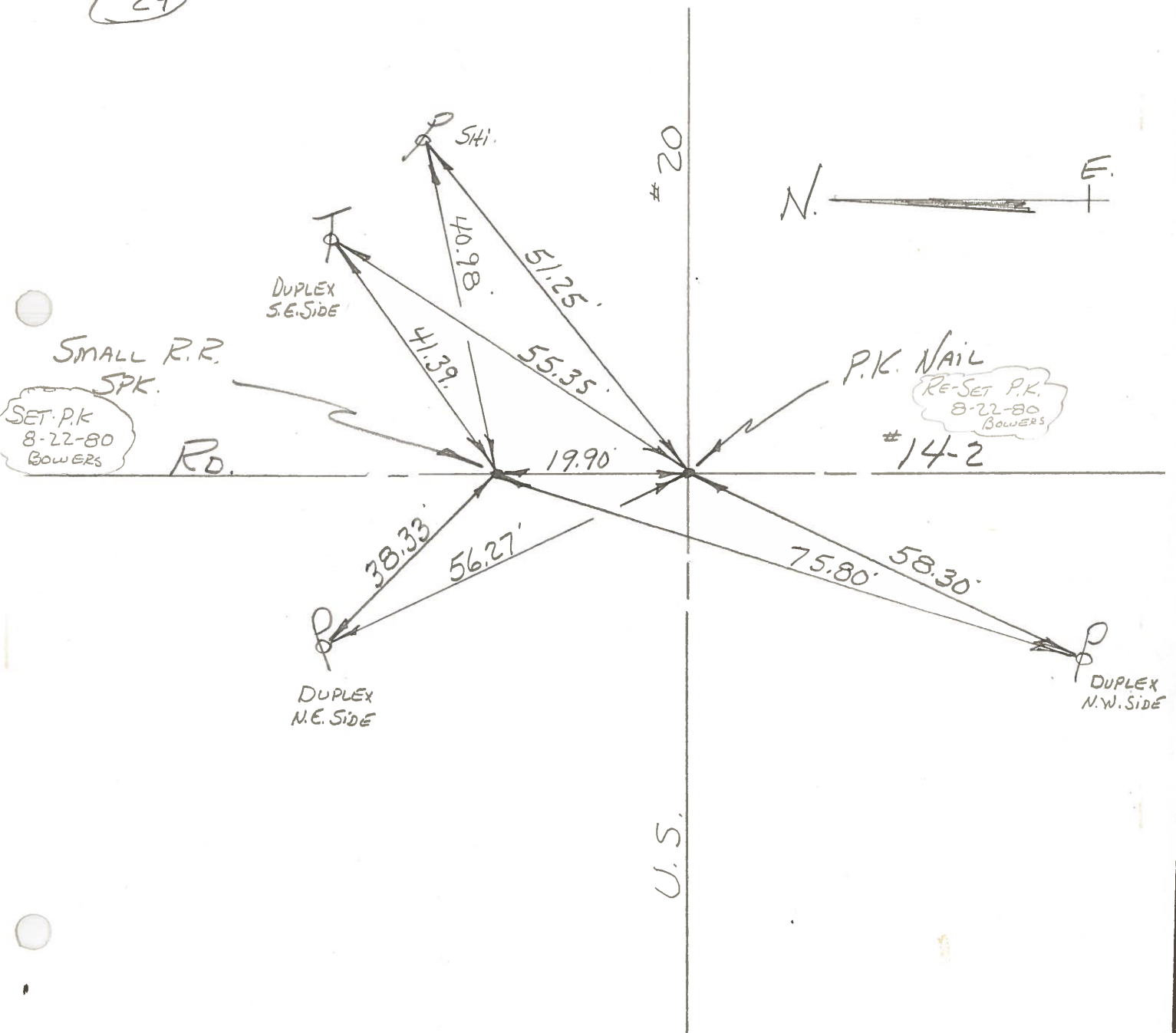
T9 ~~N~~ R2E

Personnel BOWERS



MEAD

#29



SMALL R.R.
SPK.

SET P.K.
8-22-80
BOWERS

RE-SET P.K.
8-22-80
BOWERS

DUPLEX
S.E. SIDE

DUPLEX
N.E. SIDE

DUPLEX
N.W. SIDE

P 54i.

T

P

P

41.39'

56.27'

40.98'

55.35'

51.25'

19.90'

75.80'

58.30'

#20

#14-2

U.S.

PERSONNEL	TAMMIE	TITLE		PERSONNEL	Boyle	TITLE		COUNTY	Fulton	DATE	June 12, 19
	Weiser							S. R.	U.S. 20	WEATHER	
	Granata							SEC.	Chesterfield TWP.	TEMP.	
	Janyo										

DESCRIPTION LEFT CENTER LINE RIGHT JOB NO.

