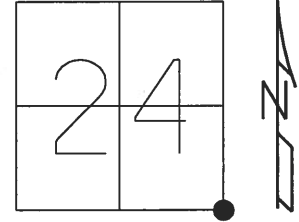


O.D.O.T. DISTRICT 2 SURVEY OFFICE (USE ONLY)

PERSONNEL _____ REFERENCE NO. 31 SHEET 8 OF 21

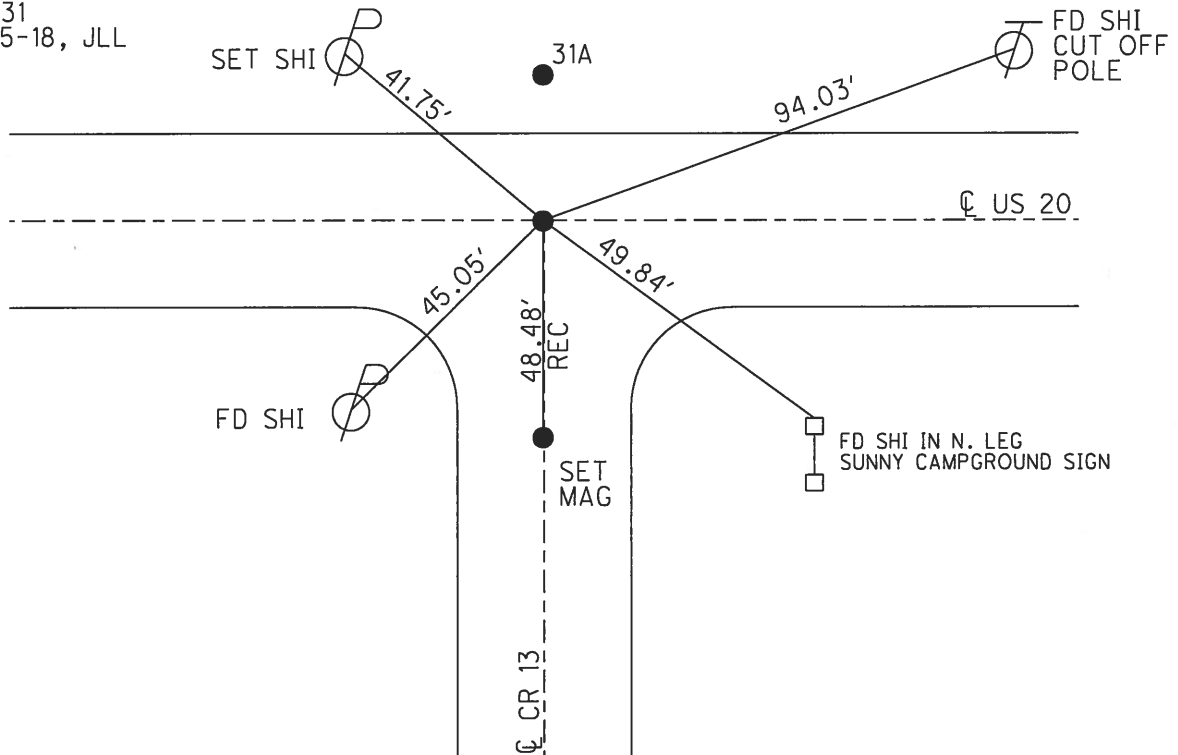
| | | | | | |
|-------|------------------|---------|----------------|----------|---------------------|
| NOTES | RHOADES _____ | DATE | <u>3/29/17</u> | ROUTE | <u>US 20</u> |
| H.C. | <u>O'DONNELL</u> | WEATHER | <u>CLEAR</u> | COUNTY | <u>FULTON</u> |
| R.C. | <u>HELDMAN</u> | TEMP. | <u>40°</u> | TOWNSHIP | <u>CHESTERFIELD</u> |
| | _____ | | | SECTION | <u>24</u> |
| | _____ | | | | <u>T 9 S R 2 E</u> |

TYPE MONUMENT _____ MAG/WASHER _____
 ON SURFACE - ~~BELOW~~ _____ ON _____
~~LEFT~~ - ℄ PAV'T - RIGHT _____ ON _____
12.3' TO LT EDGE PAVEMENT
 S.L.M. 833+69.75
 GRID: NORTHING: 733826.7740 EASTING: 1527778.259



31 TO 31A = 26.71'

RECORD:
 SET P.K.NAIL
 TO SURFACE
 8/5/87
 FD P.K. NAIL
 5/9/08, DCH
 SET MAG/WASHER
 8-3-09, DCH
 FE MAG/WASHER
 REF31
 9-22-15, JFO
 SET MAG/WASHER
 REF31
 6-25-18, JLL



O.D.O.T. DISTRICT 2 SURVEY OFFICE (USE ONLY)

PERSONNEL _____ REFERENCE NO. 31 SHEET 5 OF 17

NOTES ROUSOS DATE 5/29/09 ROUTE US 20

H.C. HOMAN WEATHER CLEAR COUNTY FULTON

R.C. ROUSOS TEMP. 69° TOWNSHIP CHESTERFIELD

SECTION 25

T 9 S R 2 E

TYPE MONUMENT P.K. NAIL

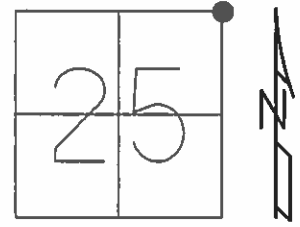
~~ON SURFACE~~ - BELOW 3"

~~LEFT -~~ ☉ PAV'T - ~~RIGHT~~ ON _____

_____ TO _____ EDGE PAVEMENT

S.L.M. 833+69.77

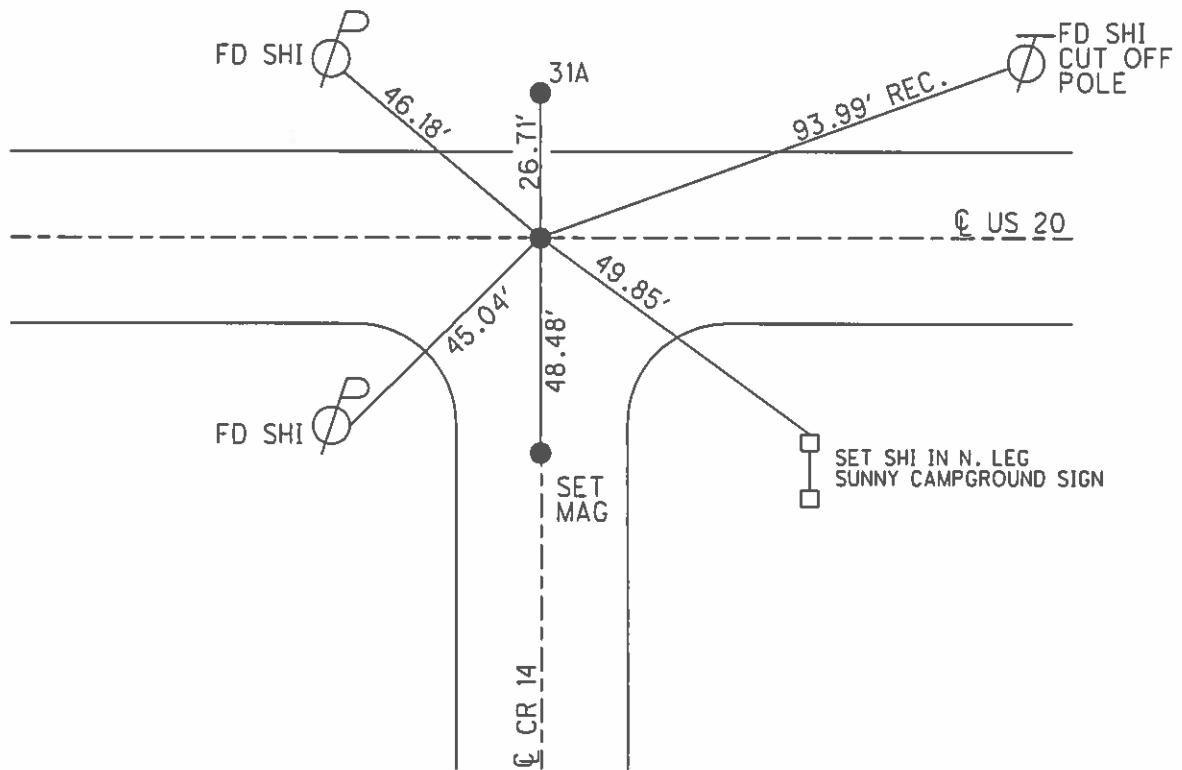
GRID: NORTHING: 733826.705 EASTING: 152778.220



SET P.K. NAIL
TO SURFACE
8/5/87

FD P.K. NAIL
5/9/08 DCH

SET MAG & WASHER
8-03-09
DCH



O.D.O.T. DISTRICT 2 SURVEY OFFICE

PERSONNEL

REFERENCE NO. 31

SHEET 3 OF 12

NOTES J. Householder

H.C. D. Curtis

DATE March 5, 1986

ROUTE U.S. 20

R.C. I. Stone

WEATHER P. Sunny

COUNTY Fulton

R. Michalak

TEMP. + 36°

TOWNSHIP Chesterfield

SECTION 25

T. R.

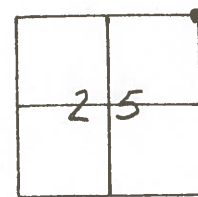
TYPE MONUMENT P. K. NAIL

ON SURFACE - BELOW Surface

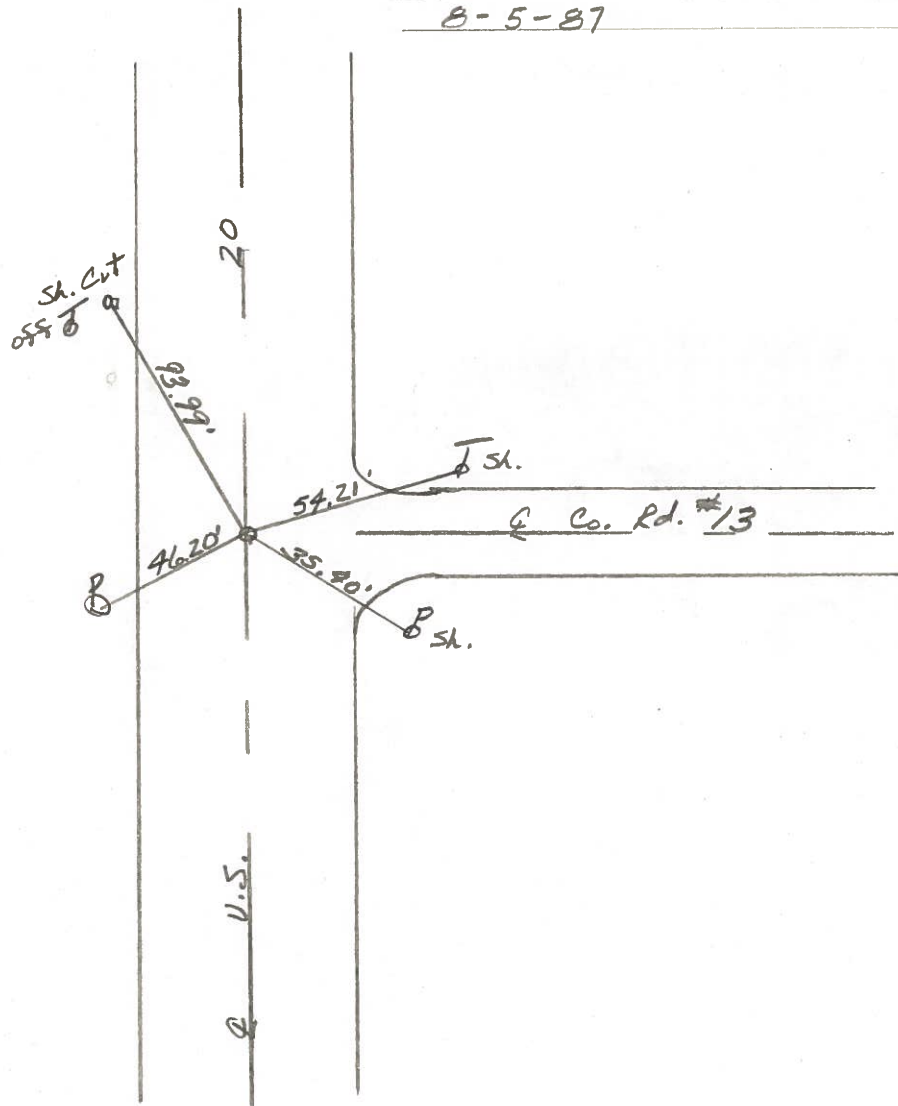
LEFT - & PAW'T. - RIGHT

 TO EDGE PAVEMENT

S.L.M. 839 + 53



SET P.K. NAIL TO SURFACE
8-5-87



County FULTON SR. U.S. 20

Date 3-10-80

Township CHESTERFIELD

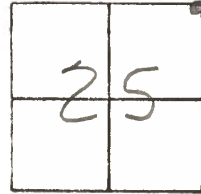
Weather CLEAR

Section _____

Temp. +30°

~~T9N~~ R2E

Personnel BOWERS



MEAD

31

FD. P.K. NAIL
RE-SET P.K.
8-22-80
BOWERS

