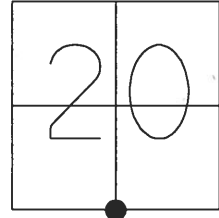


O.D.O.T. DISTRICT 2 SURVEY OFFICE (USE ONLY)

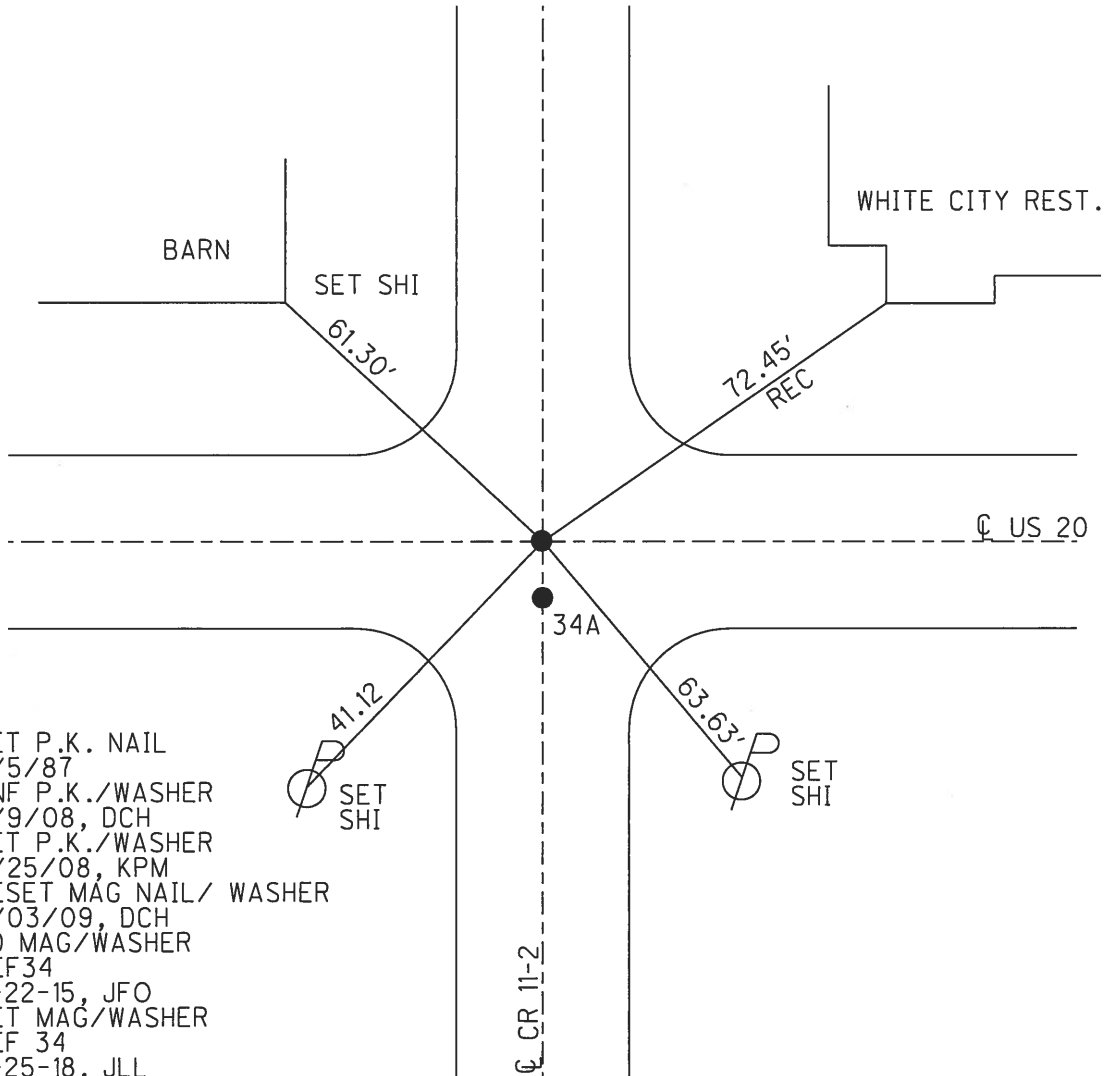
PERSONNEL \_\_\_\_\_ REFERENCE NO. 34 SHEET 12 OF 21  
 NOTES RHOADES DATE 3/29/17 ROUTE US 20  
 H.C. O'DONNELL WEATHER CLEAR COUNTY FULTON  
 R.C. HELDMAN TEMP. 40° TOWNSHIP ROYALTON  
 \_\_\_\_\_ SECTION 20  
 \_\_\_\_\_ T 9 S R 3 E

TYPE MONUMENT \_\_\_\_\_ MAG/WASHER \_\_\_\_\_  
 ON SURFACE - ~~BELOW~~ \_\_\_\_\_ ON \_\_\_\_\_  
 LEFT - ☉ PAV'T - ~~RIGHT~~ \_\_\_\_\_ 3.15'  
 \_\_\_\_\_ TO \_\_\_\_\_ EDGE PAVEMENT  
 S.L.M. 912+44.32



GRID: NORTHING: 733858.345 EASTING: 1535652.755

34 TO 34A = 3.17'



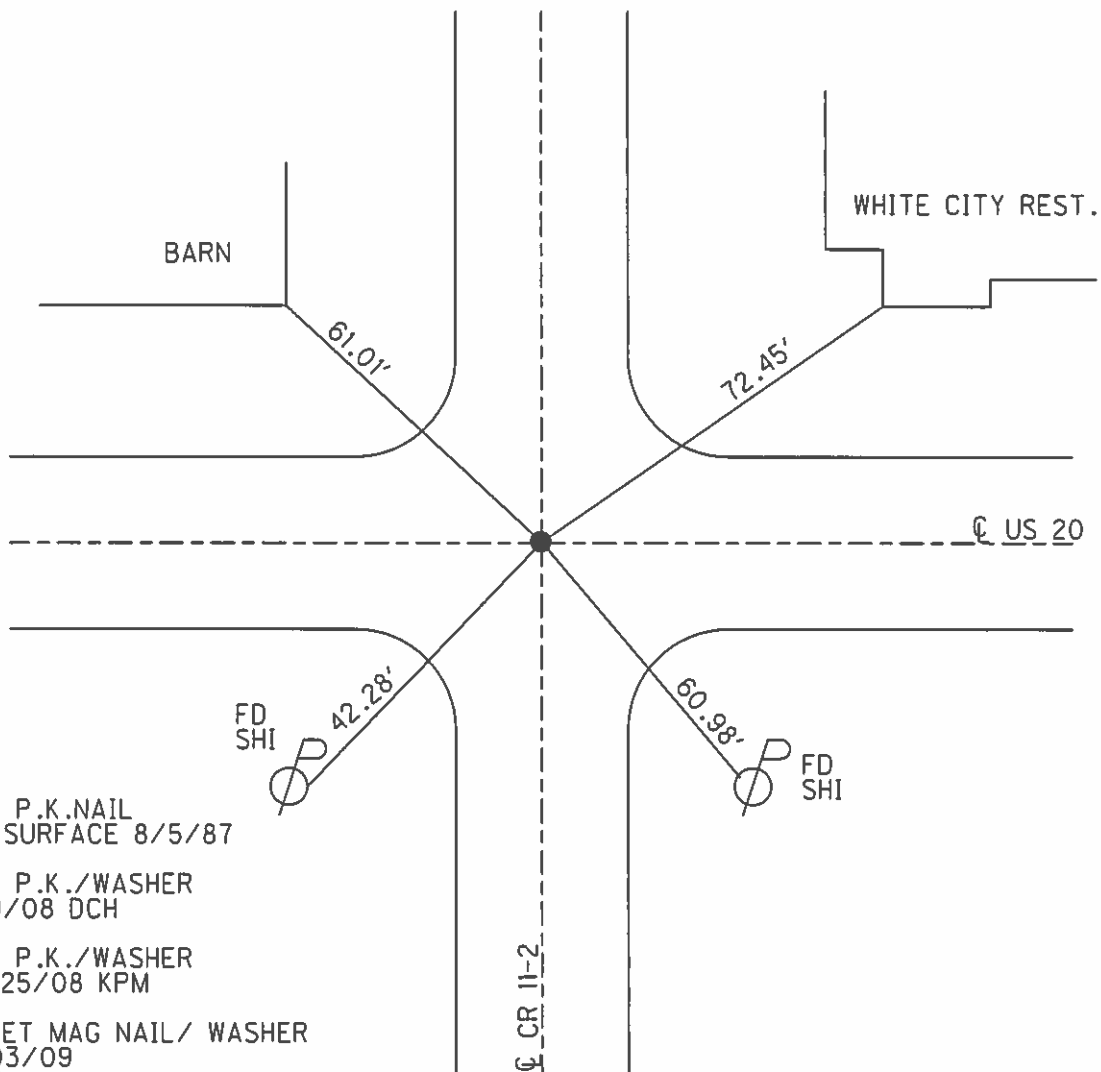
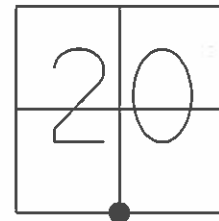
- SET P.K. NAIL
- 8/5/87
- DNF P.K./WASHER
- 5/9/08, DCH
- SET P.K./WASHER
- 6/25/08, KPM
- RESET MAG NAIL/ WASHER
- 8/03/09, DCH
- FD MAG/WASHER
- REF 34
- 9-22-15, JFO
- SET MAG/WASHER
- REF 34
- 6-25-18, JLL

O.D.O.T. DISTRICT 2 SURVEY OFFICE (USE ONLY)

PERSONNEL \_\_\_\_\_ REFERENCE NO. 34 SHEET 9 OF 17

NOTES ROUSOS DATE 5/29/09 ROUTE US 20  
H.C. HOMAN WEATHER CLEAR COUNTY FULTON  
R.C. ROUSOS TEMP. 69° TOWNSHIP ROYALTON  
SECTION 20  
T 9 S R 2 E

TYPE MONUMENT P.K.NAIL  
ON SURFACE - ~~BELOW~~ ON  
LEFT - ☉ PAV'T - RIGHT ON  
TO EDGE PAVEMENT  
S.L.M. 912+44.27  
GRID: NORTHING: 733858.330 EASTING: 1535652.684



SET P.K.NAIL  
TO SURFACE 8/5/87

DNF P.K./WASHER  
5/9/08 DCH

SET P.K./WASHER  
6/25/08 KPM

RESET MAG NAIL / WASHER  
8/03/09  
DCH

O.D.O.T. DISTRICT 2 SURVEY OFFICE

PERSONNEL

REFERENCE NO. 34

SHEET 5 OF 12

NOTES J. Householder

H.C. D. Curtis

R.C. I. Stone

R. Michalak

DATE March 5, 1986

WEATHER Cloudy

TEMP. 36°

ROUTE U.S. 20

COUNTY Fulton

TOWNSHIP Royalton

SECTION 20

T.     R.    

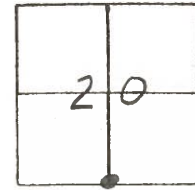
TYPE MONUMENT P. K. Nail

ON SURFACE - BELOW Surface

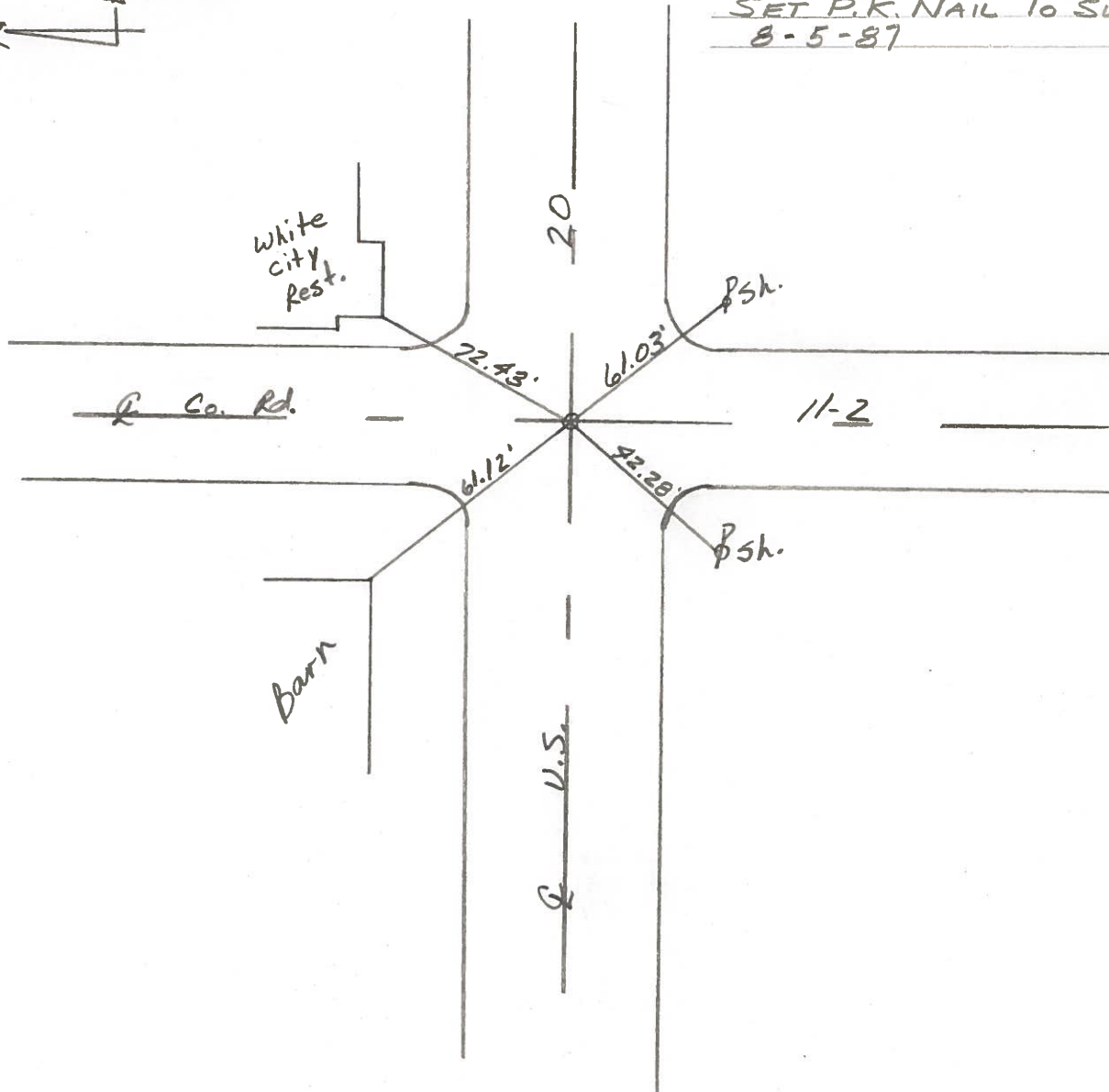
LEFT - ☉ PAW'T. - RIGHT    

    TO     EDGE PAVEMENT

S.L.M. 918 + 27



SET P.K. NAIL TO SURFACE  
8-5-87



# O.D.O.T. DISTRICT 2 SURVEY OFFICE

PERSONNEL

REFERENCE NO. 34

SHEET 1 OF 2

NOTES 1. Stone

H.C. D. Curtis

DATE 8 July 85

ROUTE US # 20

R.C. R. Michalak

WEATHER Sunny

COUNTY Fulton

J. Householder

TEMP. 78°

TOWNSHIP Royalton

SECTION 20

T 9 S 3 R 3 E

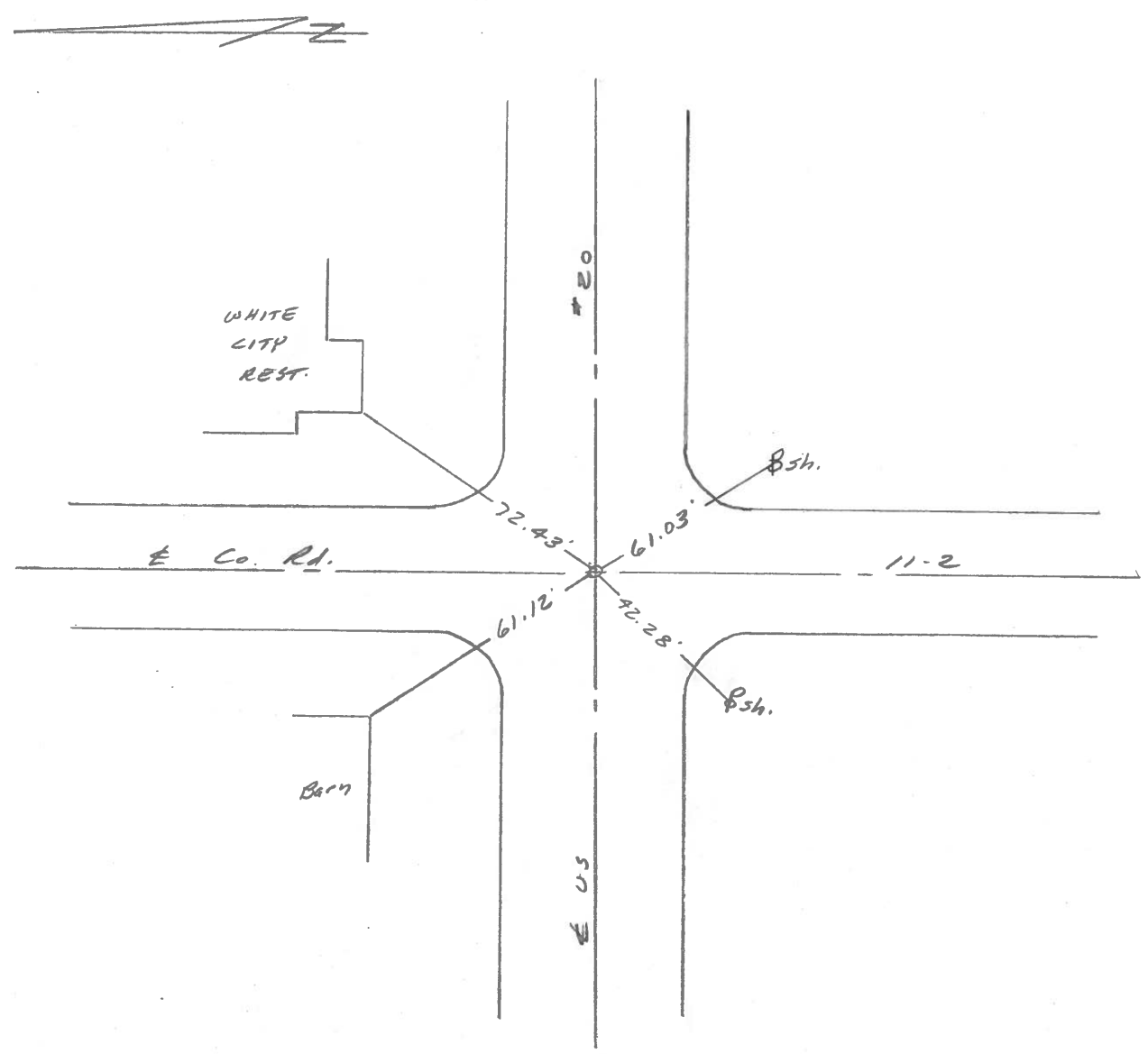
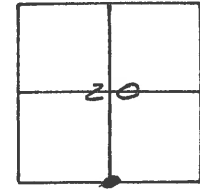
TYPE MONUMENT PK Nail

ON SURFACE - BELOW Surface

LEFT - & PAW'T. - RIGHT 3.0' Lt.

TO EDGE PAVEMENT

S.L.M. 918+26.8



County FULTON S.R. U.S. 20

Date 3-11-80

Township ROYALTON

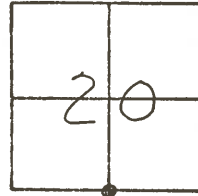
Weather CLEAR

Section 20

Temp. +30°

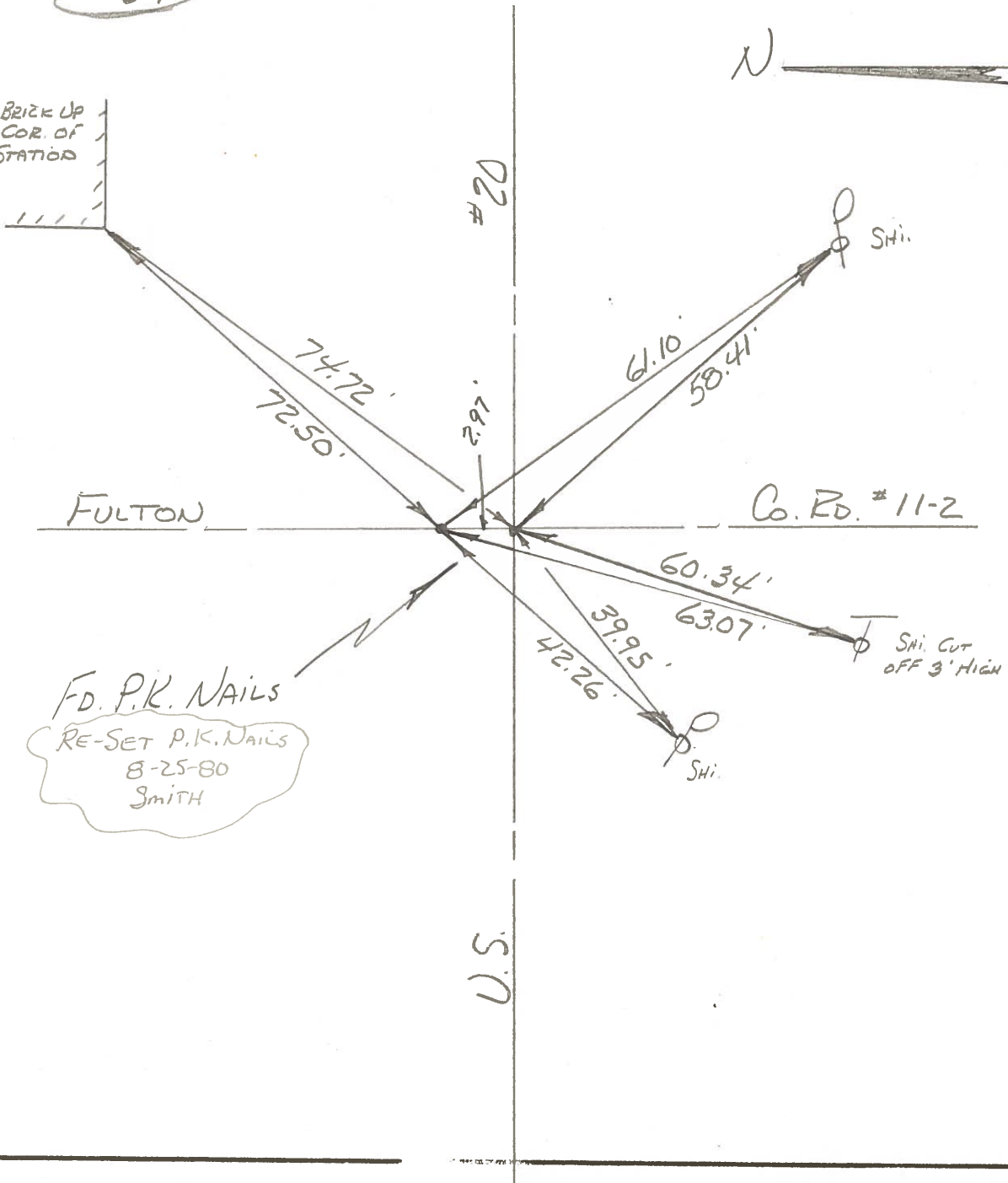
T9, R2E

Personnel BOWERS



#34

2<sup>ND</sup> BRICK UP  
S.W. COR. OF  
GAS STATION



FD. P.K. NAILS  
RE-SET P.K. NAILS  
8-25-80  
SMITH

PERSONNEL	TITLE	PERSONNEL	TITLE	COUNTY	DATE	WEATHER	TEMP
Tomsic		Boyle		Fulton	JUNE 14, 1973		
Neuser				S. R. U.S. 20			
Gunnata				SEC. Royalton TWP.			
Vanyo							

