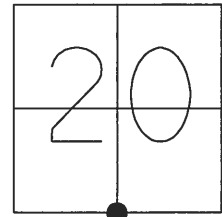


O.D.O.T. DISTRICT 2 SURVEY OFFICE (USE ONLY)

PERSONNEL \_\_\_\_\_ REFERENCE NO. 34A SHEET 13 OF 21  
 NOTES RHOADES DATE 3/29/17 ROUTE US 20  
 H.C. O'DONNELL WEATHER CLEAR COUNTY FULTON  
 R.C. HELDMAN TEMP. 40° TOWNSHIP ROYALTON  
 \_\_\_\_\_ SECTION 20  
 \_\_\_\_\_ T 9 S R 3 E

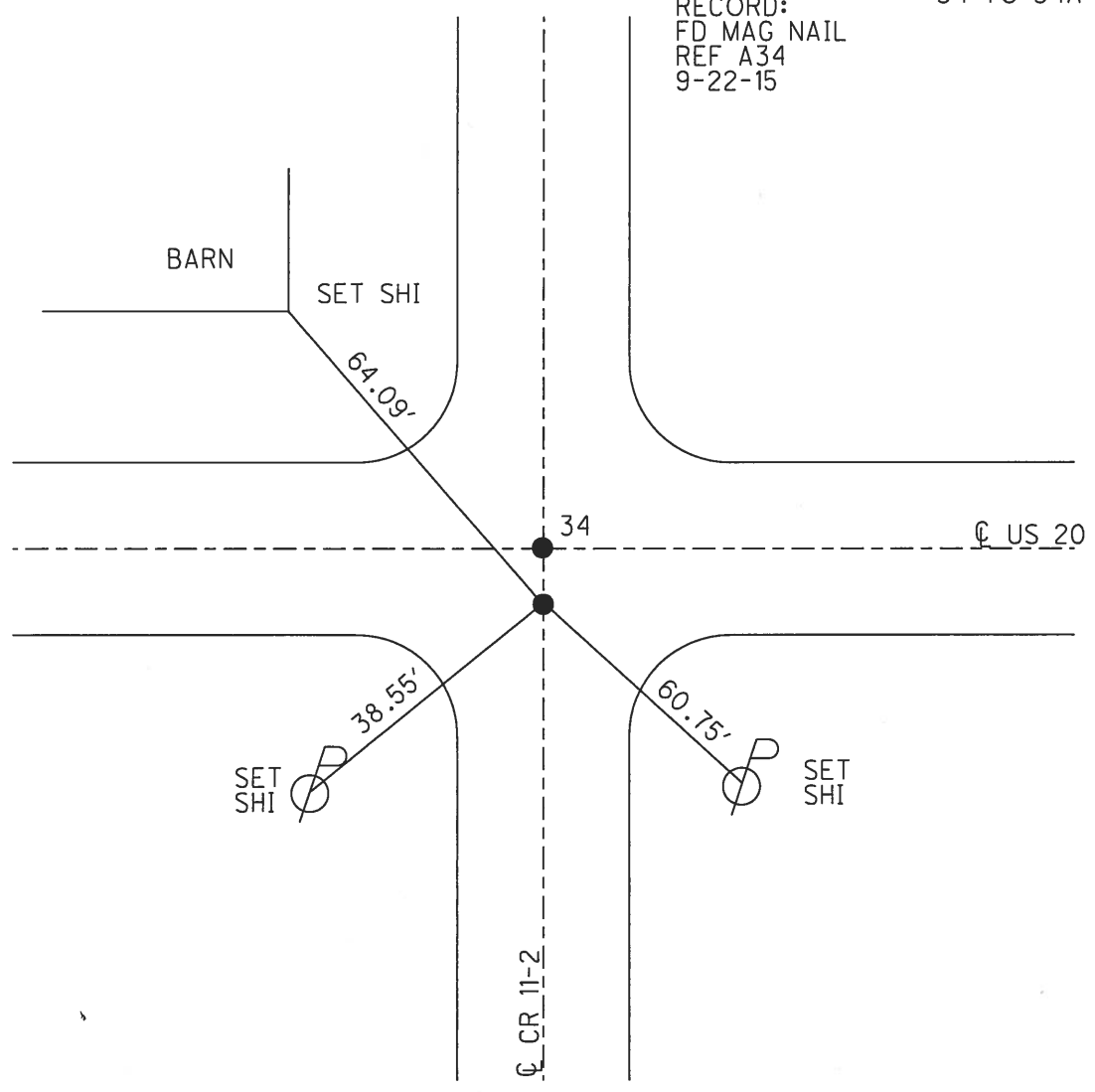
TYPE MONUMENT \_\_\_\_\_ MAG/WASHER \_\_\_\_\_  
 ON SURFACE - ~~BELOW~~ \_\_\_\_\_ ON \_\_\_\_\_  
~~LEFT~~ -  $\text{\textcircled{C}}$  PAV'T - RIGHT 6"  
 \_\_\_\_\_ TO \_\_\_\_\_ EDGE PAVEMENT  
 S.L.M. 912+44.32



GRID: NORTHING: 733855.199 EASTING: 1535652.811

34 TO 34A = 3.17'

RECORD:  
 FD MAG NAIL  
 REF A34  
 9-22-15



O.D.O.T. DISTRICT 2 SURVEY OFFICE

SHEET 7 OF 13

County FULTON S.R. U.S. 20

Date 3-11-80

Township ROYALTON

Weather CLEAR

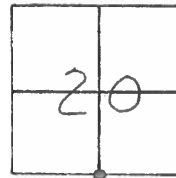
Section 20

Temp. +30°

T9#5 R2E

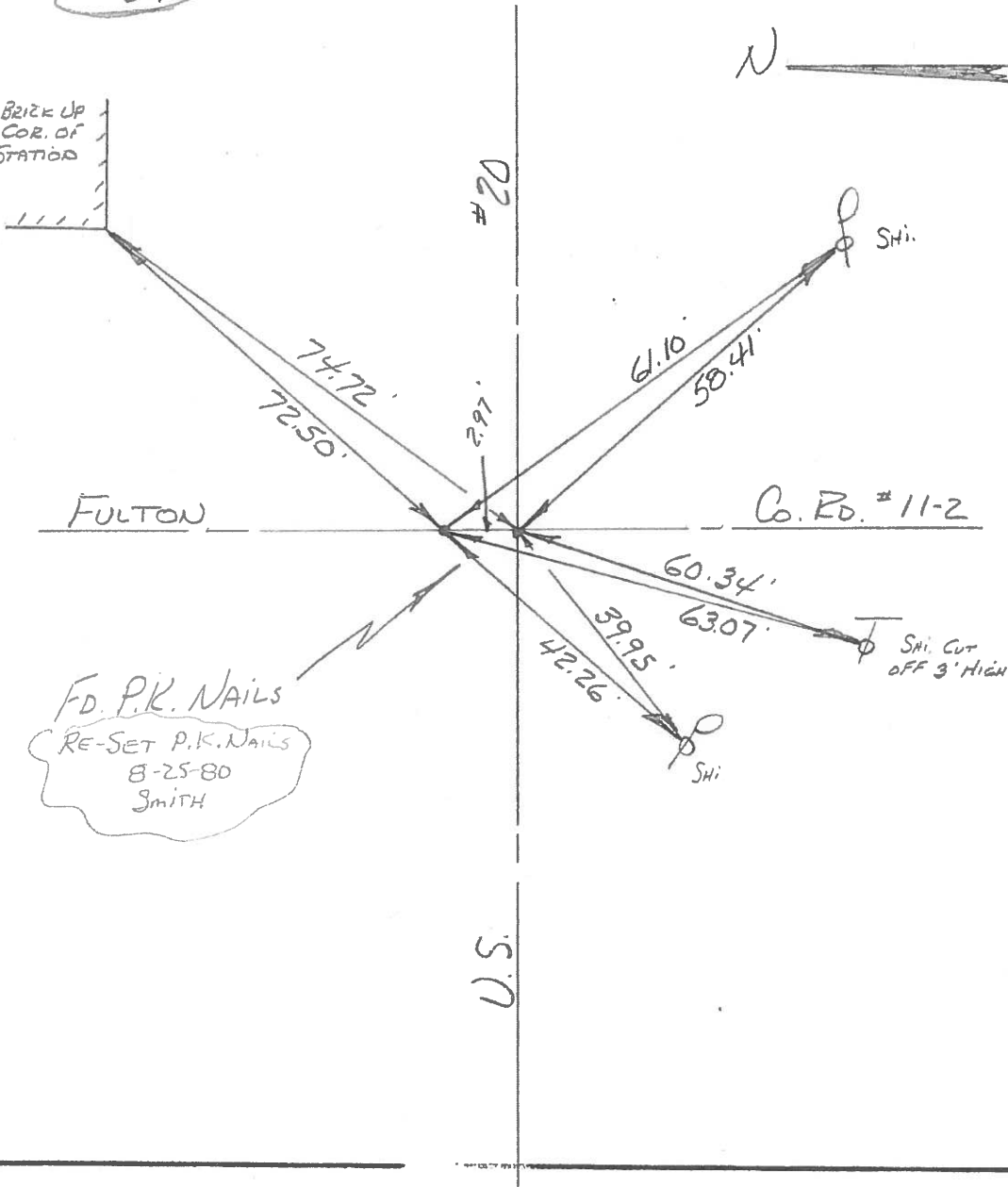
Personnel BOWERS

MEAD



#34

2<sup>nd</sup> BRICK UP  
S.W. COR. OF  
GAS STATION



FD. P.K. NAILS  
RE-SET P.K. NAILS  
8-25-80  
SMITH

SHI. CUT  
OFF 3' HIGH

PERSONNEL	TITLE	PERSONNEL	TITLE	COUNTY	DATE	WEATHER	TEMP
Tomsic		Boyle		Fulton	JUNE 14, 1973		
Neuser				U.S. 20			
Gunnata							
Vanyo				SEC. Royaltown TWP.			

DESCRIPTION LEFT CENTER LINE RIGHT JOB NO.

