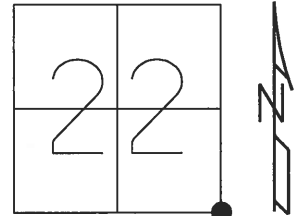


O.D.O.T. DISTRICT 2 SURVEY OFFICE (USE ONLY)

PERSONNEL	REFERENCE NO.	40	SHEET	20	OF	21
NOTES	HOMAN	DATE	6/5/09	ROUTE	US 20	
H.C.	HOMAN	WEATHER	CLEAR	COUNTY	FULTON	
R.C.	ROUSOS	TEMP.	69°	TOWNSHIP	ROYALTON	
				SECTION	22	
				T	9	S
				R	3	E

TYPE MONUMENT _____ MON BOX _____
 ON SURFACE - ~~BELOW~~ _____ ON _____
~~LEFT~~ - Q PAV'T - ~~RIGHT~~ _____ ON _____
 _____ TO _____ EDGE PAVEMENT
 S.L.M. 1044+93.31

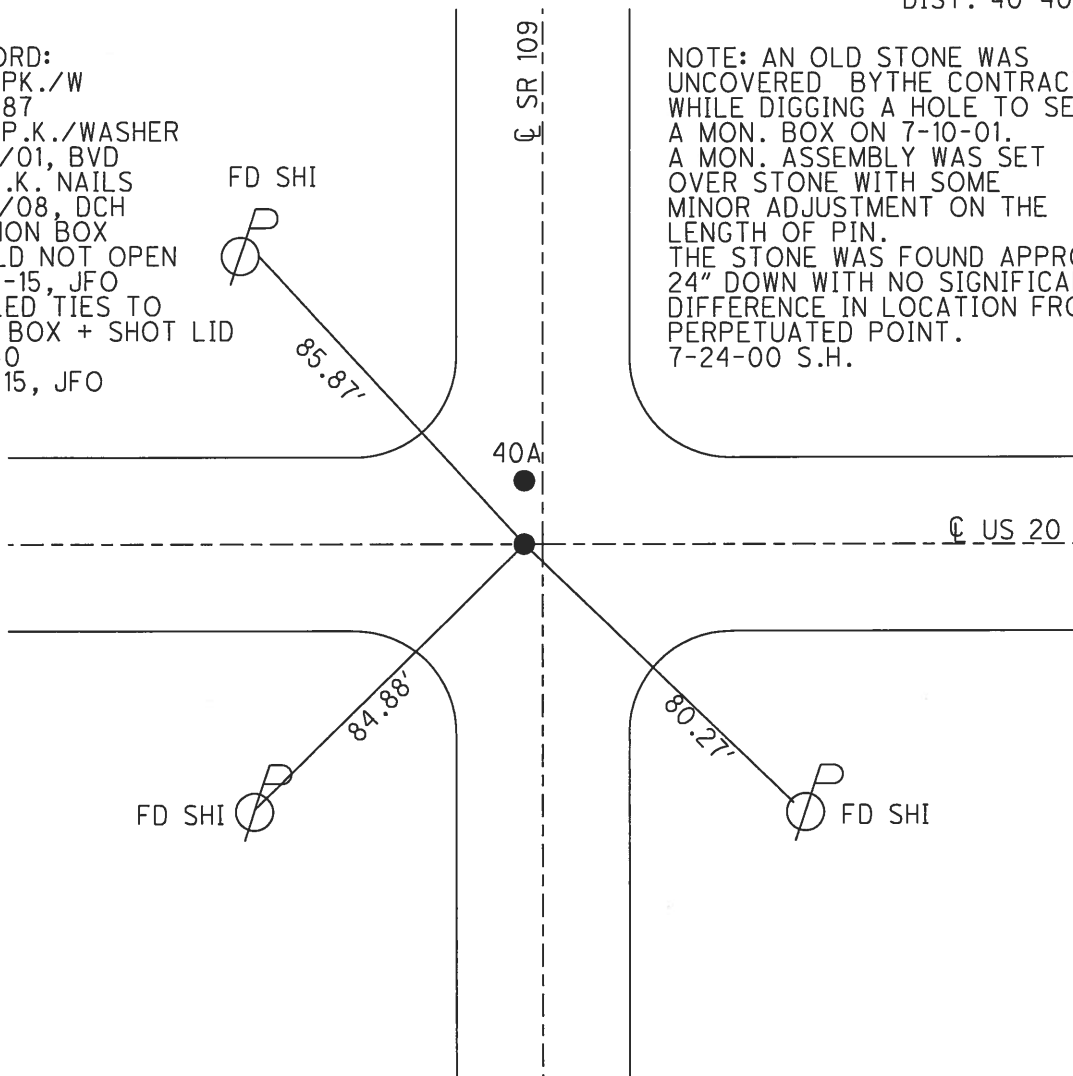


GRID: NORTHING: 733890.389 EASTING: 1548901.635

DIST. 40-40A= 6.11'

RECORD:
 SET PK./W
 8-6-87
 SET P.K./WASHER
 6/21/01, BVD
 FD P.K. NAILS
 5/12/08, DCH
 FD MON BOX
 COULD NOT OPEN
 9-24-15, JFO
 PULLED TIES TO
 MON BOX + SHOT LID
 REF40
 11-4-15, JFO

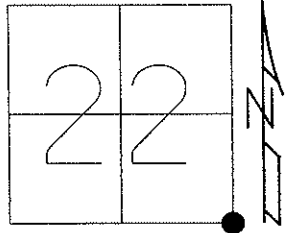
NOTE: AN OLD STONE WAS UNCOVERED BY THE CONTRACTOR WHILE DIGGING A HOLE TO SET A MON. BOX ON 7-10-01. A MON. ASSEMBLY WAS SET OVER STONE WITH SOME MINOR ADJUSTMENT ON THE LENGTH OF PIN. THE STONE WAS FOUND APPROX. 24" DOWN WITH NO SIGNIFICANT DIFFERENCE IN LOCATION FROM PERPETUATED POINT. 7-24-00 S.H.



O.D.O.T. DISTRICT 2 SURVEY OFFICE (USE ONLY)

PERSONNEL	REFERENCE NO. <u>38 B</u>	SHEET <u>34</u> OF <u>35</u>
NOTES <u>HUSS</u>	DATE <u>06-25-12</u>	ROUTE <u>US 20</u>
H.C. <u>HARBAUGH</u>	WEATHER <u>CLEAR</u>	COUNTY <u>FULTON</u>
R.C. <u>COUTCHER</u>	TEMP. <u>80°</u>	TOWNSHIP <u>ROYALTON</u>
		SECTION <u>22</u>
		T <u>9</u> S R <u>3</u> E

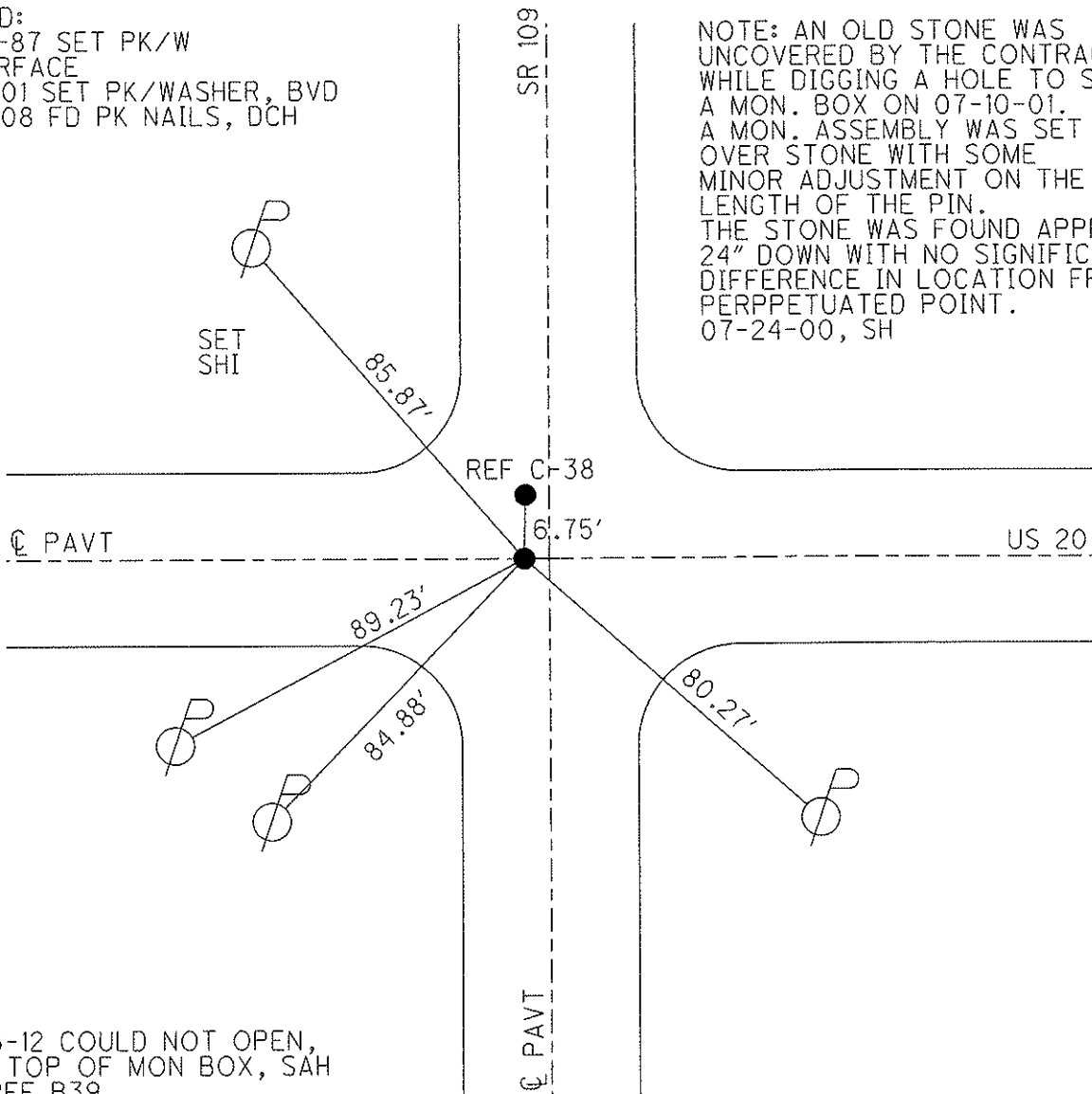
TYPE MONUMENT _____ MON BOX _____
 ON SURFACE - BELOW _____ ON _____
 LEFT - \odot PAV'T - RIGHT _____
 _____ TO _____ EDGE PAVEMENT
 S.L.M. _____ 1044+93.27



Grid: Northing: 733890.400 Easting: 1548901.625

RECORD:
 08-06-87 SET PK/W
 TO SURFACE
 06-21-01 SET PK/WASHER, BVD
 05-12-08 FD PK NAILS, DCH

NOTE: AN OLD STONE WAS UNCOVERED BY THE CONTRACTOR WHILE DIGGING A HOLE TO SET A MON. BOX ON 07-10-01. A MON. ASSEMBLY WAS SET OVER STONE WITH SOME MINOR ADJUSTMENT ON THE LENGTH OF THE PIN. THE STONE WAS FOUND APPROX. 24" DOWN WITH NO SIGNIFICANT DIFFERENCE IN LOCATION FROM PERPETUATED POINT. 07-24-00, SH

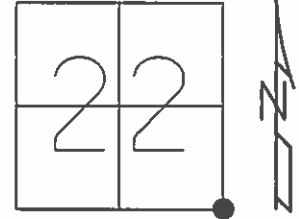


06-25-12 COULD NOT OPEN,
 SHOT TOP OF MON BOX, SAH
 GPS REF B39

O.D.O.T. DISTRICT 2 SURVEY OFFICE (USE ONLY)

PERSONNEL _____ REFERENCE NO. 40 SHEET 16 OF 17
 NOTES HOMAN DATE 6/5/09 ROUTE US 20
 H.C. HOMAN WEATHER CLEAR COUNTY FULTON
 R.C. ROUSOS TEMP. 69° TOWNSHIP ROYALTON
 _____ SECTION 22
 _____ T 9 S R 3 E

TYPE MONUMENT P.K. & WASHER
 ON SURFACE - ~~BELOW~~ ON _____
 LEFT - ☉ PAV'T - RIGHT ON _____
 _____ TO _____ EDGE PAVEMENT
 S.L.M. 1044+93.27



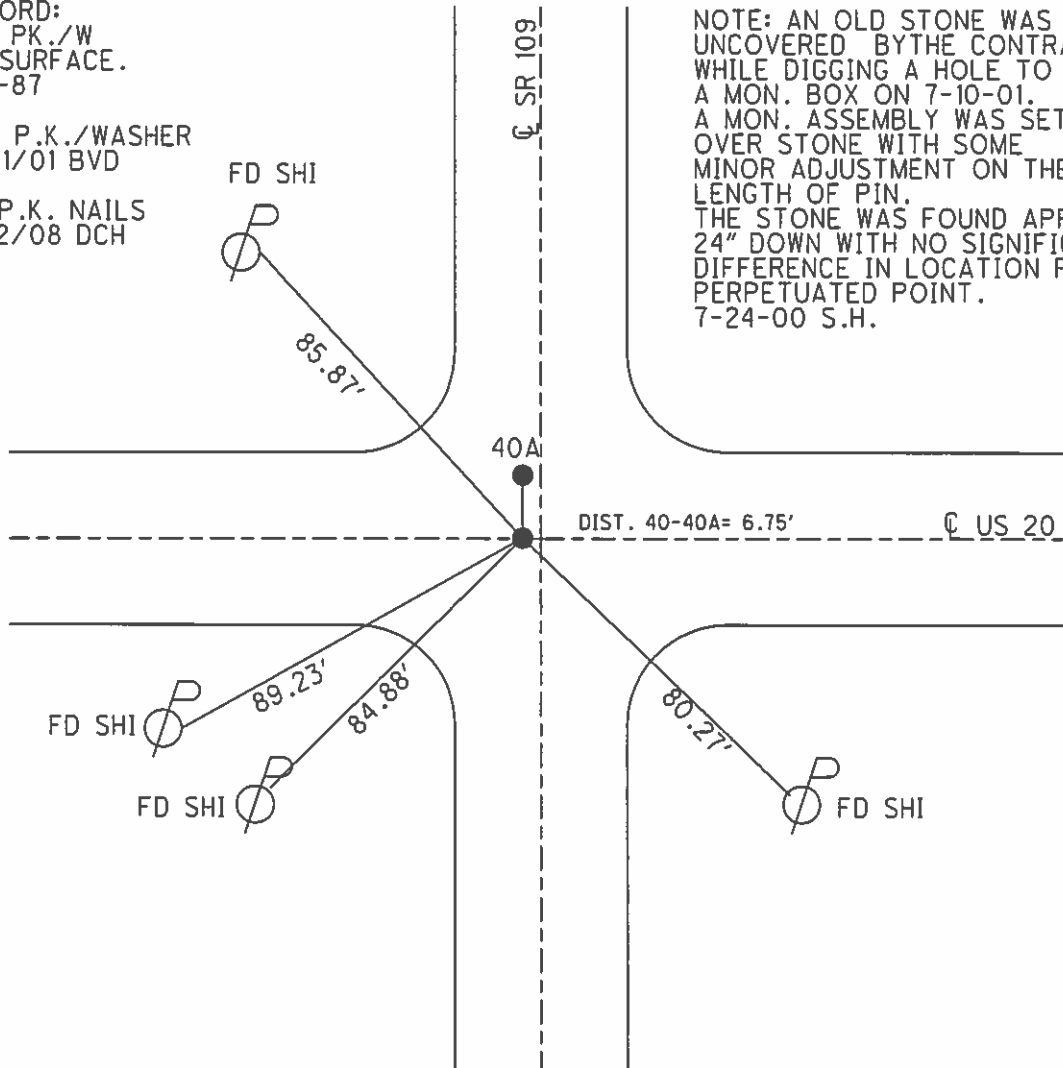
GRID: NORTHING: 733890.400 EASTING: 1548901.625

RECORD:
 SET P.K./W
 TO SURFACE.
 8-6-87

SET P.K./WASHER
 6/21/01 BVD

FD P.K. NAILS
 5/12/08 DCH

NOTE: AN OLD STONE WAS UNCOVERED BY THE CONTRACTOR WHILE DIGGING A HOLE TO SET A MON. BOX ON 7-10-01. A MON. ASSEMBLY WAS SET OVER STONE WITH SOME MINOR ADJUSTMENT ON THE LENGTH OF PIN. THE STONE WAS FOUND APPROX. 24" DOWN WITH NO SIGNIFICANT DIFFERENCE IN LOCATION FROM PERPETUATED POINT. 7-24-00 S.H.



O.D.O.T. DISTRICT 2 SURVEY OFFICE

PERSONNEL _____

REFERENCE NO. 40

SHEET 1 OF 20

NOTES Huss

H.C. CORDES

DATE 7-24-00

ROUTE US-20

R.C. KARGER

WEATHER cloudy

COUNTY Fulton

TEMP. +72°F

TOWNSHIP Royalton

SECTION 22

T9 S R 3 E

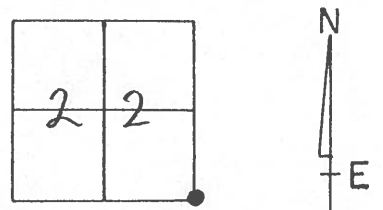
TYPE MONUMENT PK & WASHER

ON SURFACE - BELOW YES

LEFT- & PAV'T. - RIGHT _____

TO _____ EDGE PAVEMENT

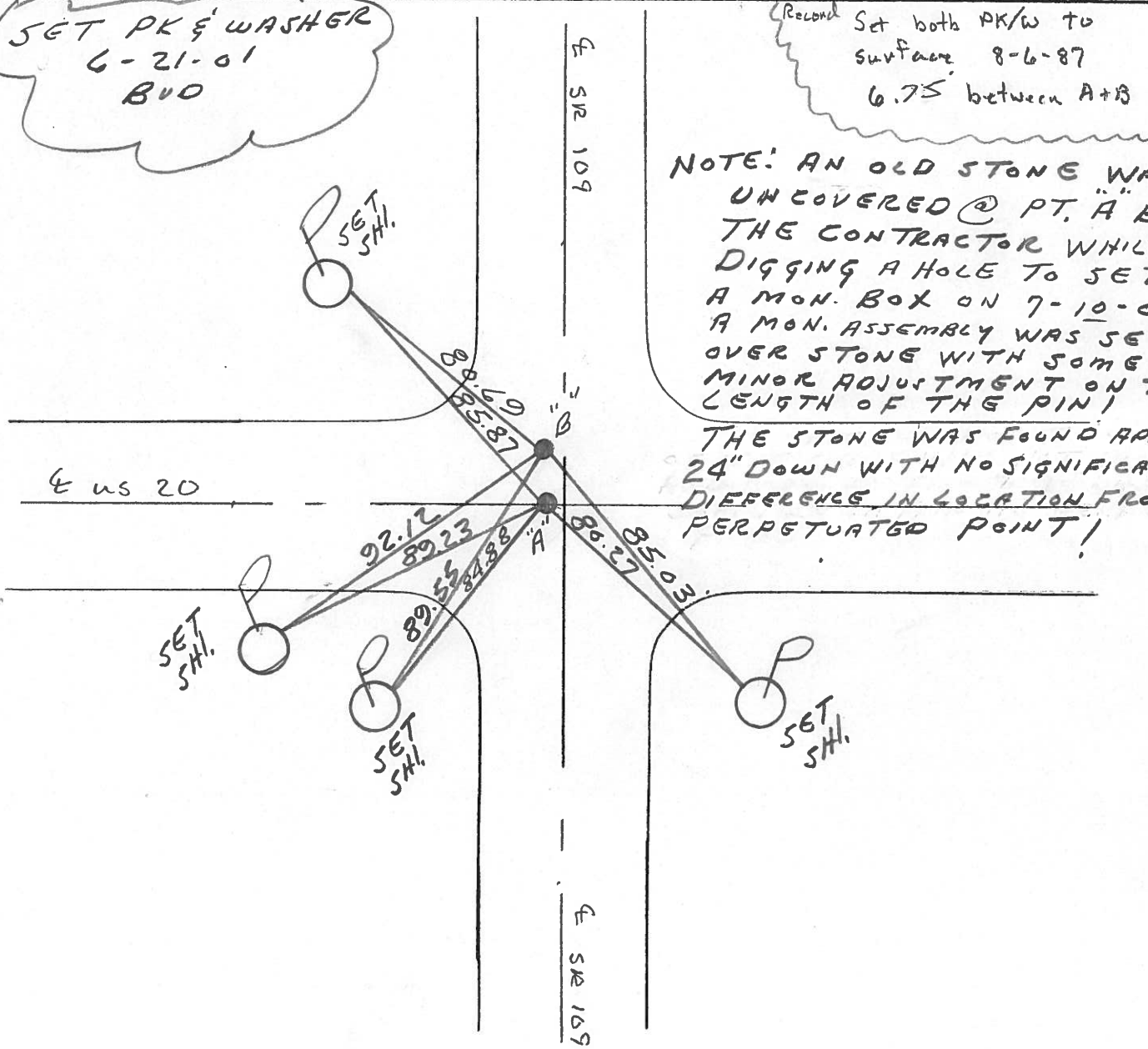
S.L.M. 1051+77.6



SET PK & WASHER
6-21-01
BUD

(Revised) Set both PK/W to
surface 8-6-87
6.75' between A+B

NOTE: AN OLD STONE WAS UNCOVERED @ PT. "A" BY THE CONTRACTOR WHILE DIGGING A HOLE TO SET A MON. BOX ON 7-10-01. A MON. ASSEMBLY WAS SET OVER STONE WITH SOME MINOR ADJUSTMENT ON THE LENGTH OF THE PIN! THE STONE WAS FOUND APPROX. 24" DOWN WITH NO SIGNIFICANT DIFFERENCE IN LOCATION FROM PERPETUATED POINT!



Resurfaced 2001

O.D.O.T. DISTRICT 2 SURVEY OFFICE

PERSONNEL

REFERENCE NO. 40

SHEET 12 OF 12

NOTES J. Householder

H.C. D. Curtis

R.C. R. Michalak

DATE March 21, 1986

WEATHER f. Cloudy

TEMP. 25°

ROUTE U.S. 20

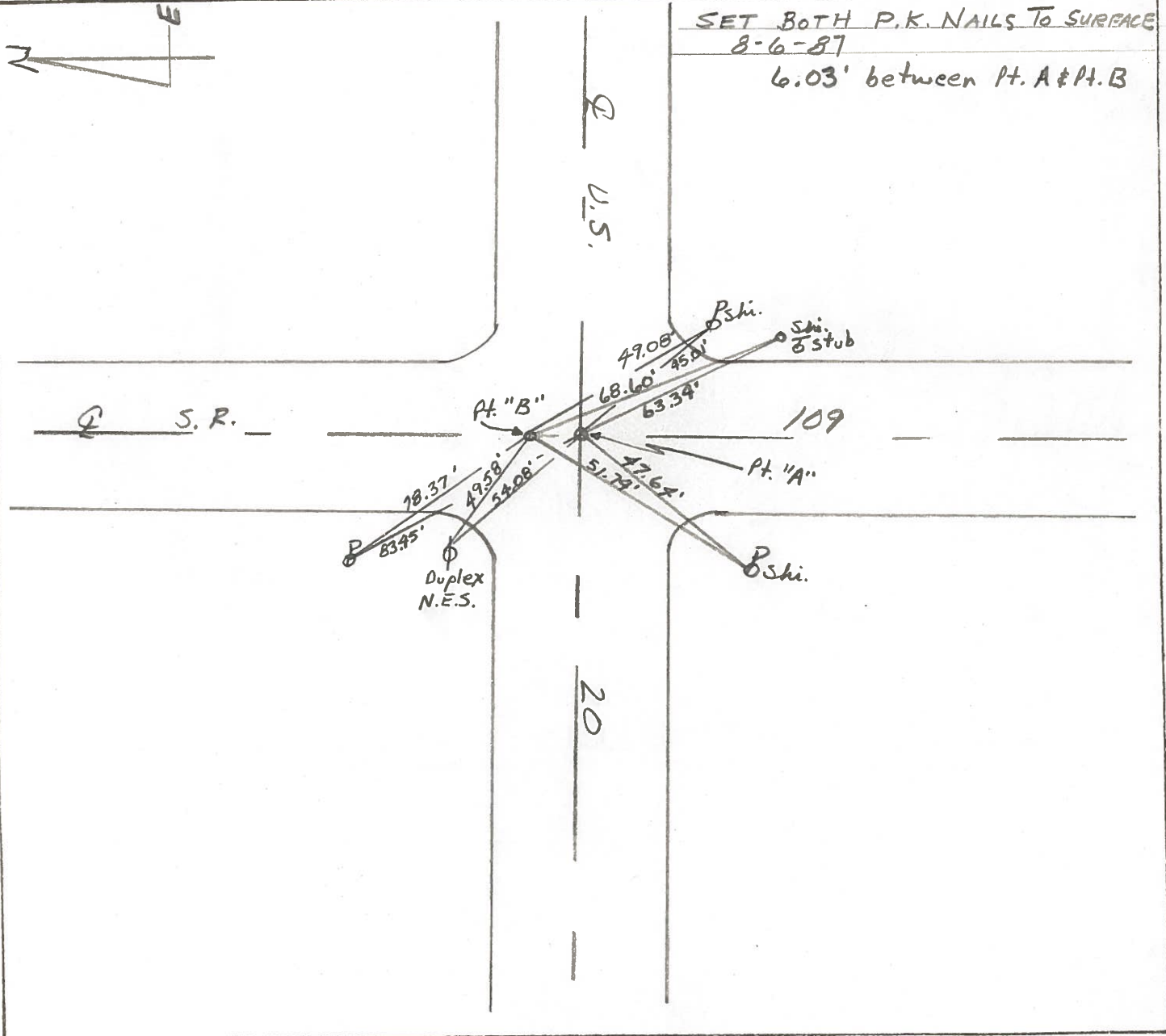
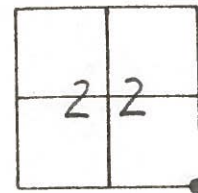
COUNTY Fulton

TOWNSHIP Royalton

SECTION 22

T. R.

TYPE MONUMENT Pt. A - P.K. Nail; Pt. B - P.K. Nail
ON SURFACE - BELOW Both @ surface
LEFT - ☉ PAW'T. - RIGHT
 TO EDGE PAVEMENT
S.L.M. 1050 + 75



Q.D.O.T. DISTRICT 2 SURVEY OFFICE

Sht. 1 of

County FULTON S.R. US-20

Township ROYALTON

Section 23

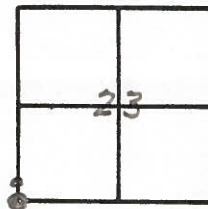
T N, R E

Personnel I. Stone
R. MICHALAK
P. NEUSER
D. CURTIS
D. GRANATA

Date 9 MAY 1979

Weather WARM

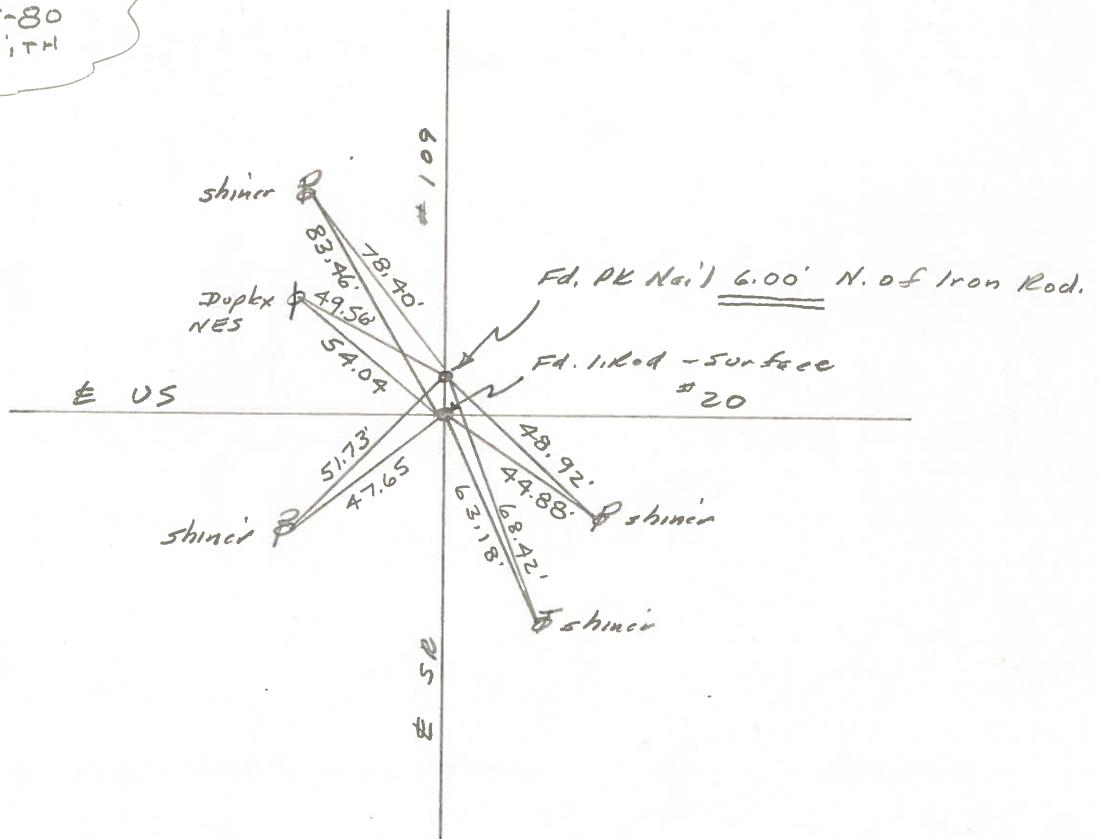
Temp. 78°



REF. NO. 40

SW COR SEC, 23

SET P.K. NAILS
8-25-80
SMITH



PERSONNEL	TITLE	PERSONNEL	TITLE	COUNTY	DATE	WEATHER	TEMP.
Tomsic		Boyle		Fulton	JUNE 18, 19		
Neuser				U.S. 20			
Granata				Royalton Twp			
Janyd							

DESCRIPTION	LEFT	CENTER LINE	RIGHT	JOB NO.
-------------	------	-------------	-------	---------

