

O.D.O.T. DISTRICT 2 SURVEY OFFICE (USE ONLY)

PERSONNEL

REFERENCE NO. 43 B

SHEET 6 OF 28

NOTES RHOADES

DATE 7/10/18

ROUTE US 20

H.C. O'DONNELL

WEATHER CLOUDY

COUNTY FULTON

R.C. RHOADES

TEMP. 87°

TOWNSHIP AMBOY

DWG BY NIESE

PID NO PID R/W

SECTION 19

T 9 S R 4 E

TYPE MONUMENT SET MAG/WASHER

ON SURFACE - ~~BELOW~~ ON

OFFSET ☉ PAVEMENT 2.5' N OF CURB ~~LT~~ : RT

- TO - EDGE PAVEMENT

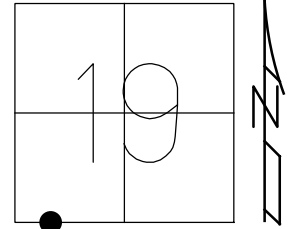
STATION: 1153+49.22

HORIZ.DATUM: NAD83 2011

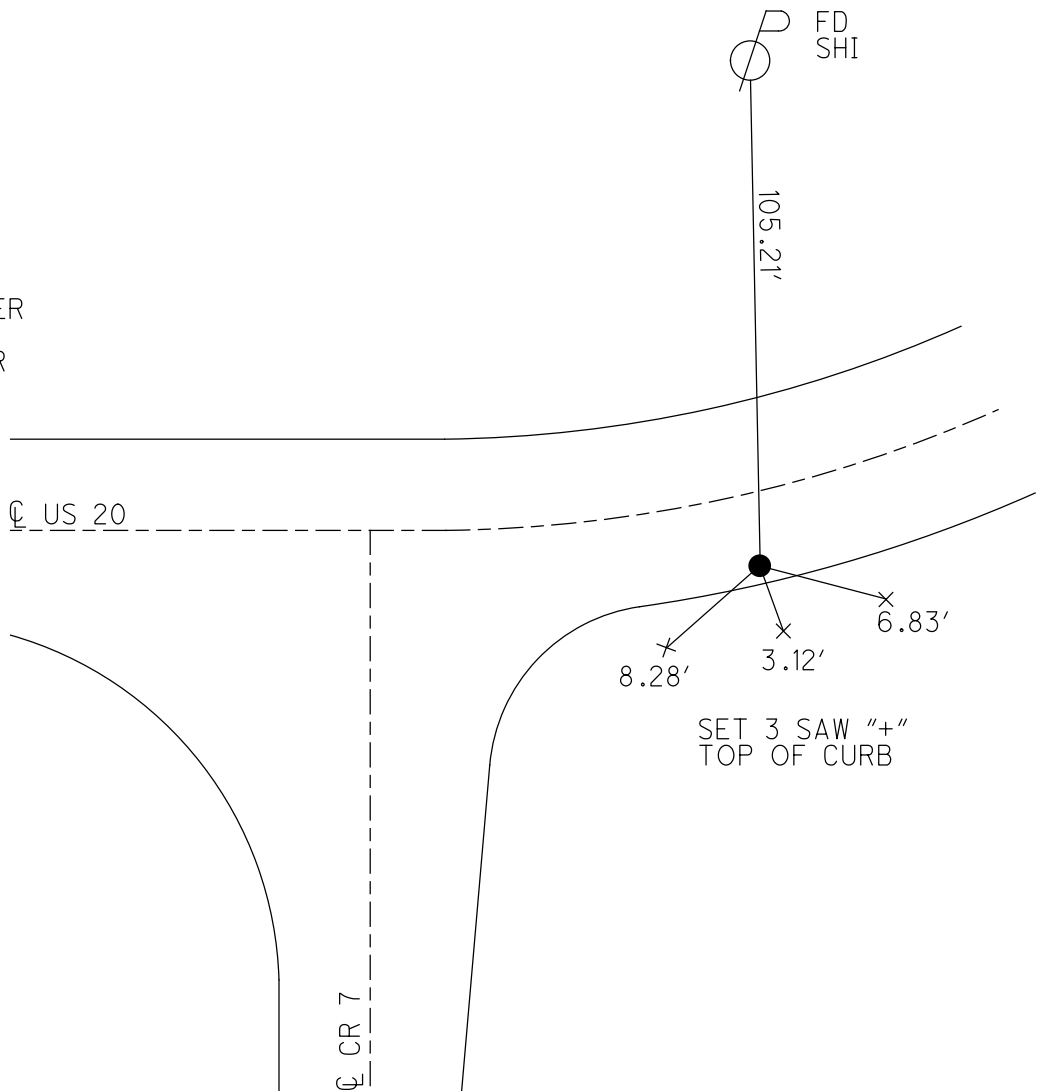
GEOID: NAVD88 2018

GRID: NORTHING: 733686.168

EASTING: 1559753.763



RECORD: P.I.  
 STA 1159+32.43  
 $\Delta = 14^{\circ}25' LT$   
 L=145  
 R= 1146.3  
 8/27/86, IRS  
 DNF  
 10/13/15  
 SHOT TIE XING  
 REFB43  
 11/4/15, JFO  
 SET MAG/WASHER  
 7/10/18, JFO  
 FD MAG/WASHER  
 RECREFB43  
 1/14/22, DSA

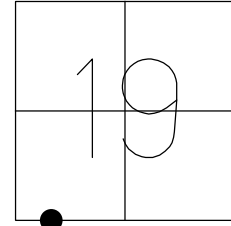


O.D.O.T. DISTRICT 2 SURVEY OFFICE (USE ONLY)

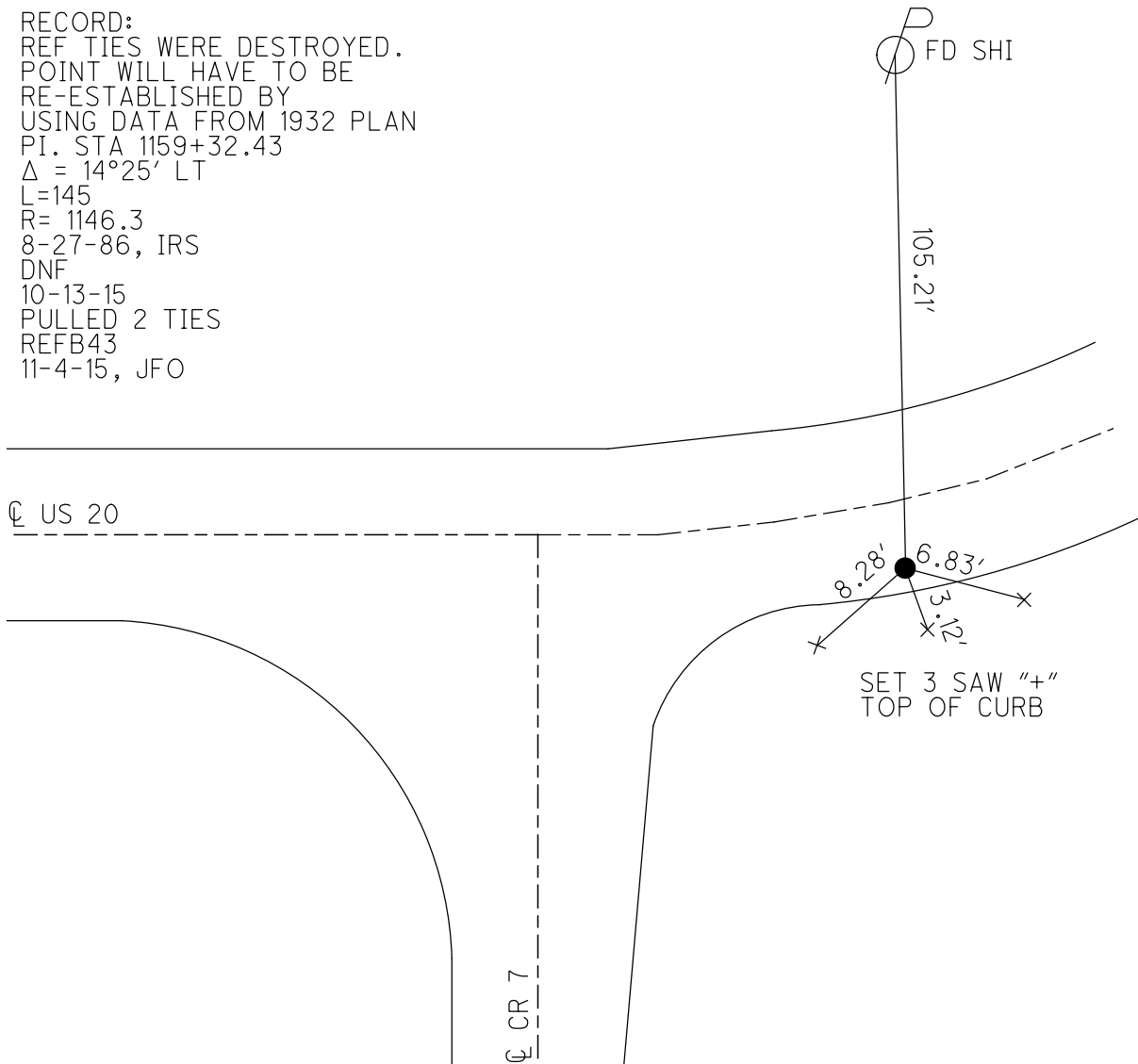
PERSONNEL \_\_\_\_\_ REFERENCE NO. 43 B SHEET 6 OF 28

NOTES RHOADES DATE 7/10/18 ROUTE US 20  
 H.C. O'DONNELL WEATHER CLOUDY COUNTY FULTON  
 R.C. RHOADES TEMP. 87° TOWNSHIP AMBOY  
 \_\_\_\_\_ SECTION 19  
 \_\_\_\_\_ T 9 S R 4 E

TYPE MONUMENT \_\_\_\_\_ SET MAG/WASHER \_\_\_\_\_  
 ON SURFACE - ~~BELOW~~ \_\_\_\_\_ ON \_\_\_\_\_  
~~LEFT~~ - ☉ PAV'T - RIGHT 2.5' N. OF CURB  
 \_\_\_\_\_ TO \_\_\_\_\_ EDGE PAVEMENT  
 S.L.M. 1153+49.22  
 GRID: NORTHING: 733686.168 EASTING: 1559753.763



RECORD:  
 REF TIES WERE DESTROYED.  
 POINT WILL HAVE TO BE  
 RE-ESTABLISHED BY  
 USING DATA FROM 1932 PLAN  
 PI. STA 1159+32.43  
 $\Delta = 14^{\circ}25' \text{ LT}$   
 L=145  
 R= 1146.3  
 8-27-86, IRS  
 DNF  
 10-13-15  
 PULLED 2 TIES  
 REFB43  
 11-4-15, JFO



O.D.O.T. DISTRICT 2 SURVEY OFFICE

PERSONNEL

REFERENCE NO. 43 B

SHEET 5 OF 27

NOTES HUSS

DATE 7/19/00

ROUTE US 20

H.C. CORDES

WEATHER PT.CLOUDY, FAIR

COUNTY FULTON

R.C. KARGER

TEMP. 72°

TOWNSHIP AMBOY

SECTION 21,19

T 9 S R 4 E

TYPE MONUMENT "+" CUT IN CONC.

ON SURFACE - ~~BELOW~~ ON

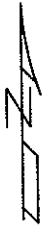
~~LEFT~~ - C PAV'T - RIGHT 2' N.-S. EDGE of BERM

TO EDGE PAVEMENT

S.L.M. 1160+58

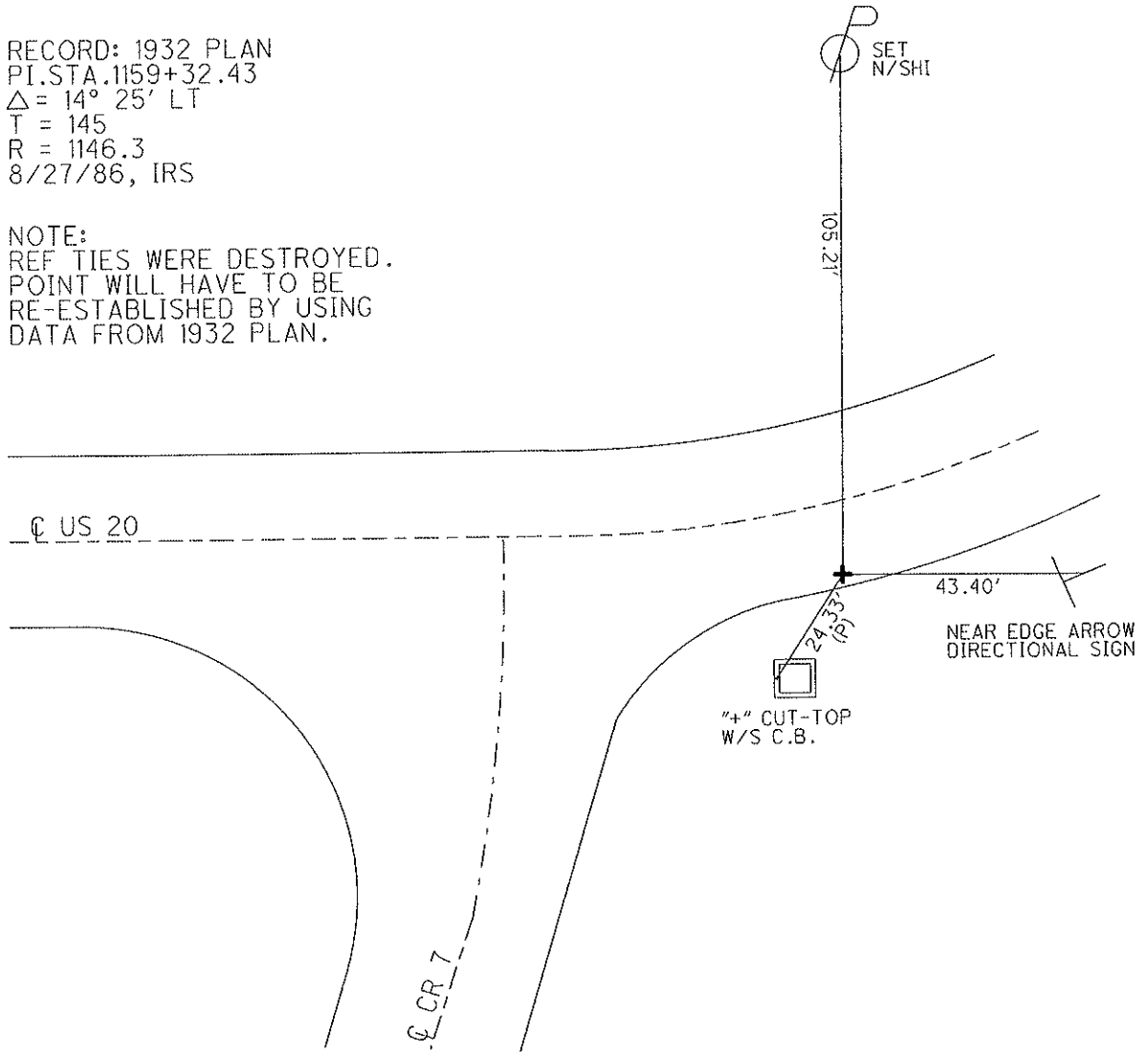
Grid: Northing: \_\_\_\_\_ Easting: \_\_\_\_\_

24	19
29	30



RECORD: 1932 PLAN  
 PI. STA. 1159+32.43  
 $\Delta = 14^\circ 25' \text{ LT}$   
 T = 145  
 R = 1146.3  
 8/27/86, IRS

NOTE:  
 REF TIES WERE DESTROYED.  
 POINT WILL HAVE TO BE  
 RE-ESTABLISHED BY USING  
 DATA FROM 1932 PLAN.





# O.D.O.T. DISTRICT 2 SURVEY OFFICE

PERSONNEL

REFERENCE NO. 43 B SHEET 5 OF     

NOTES D. CURTIS

H.C. J. HOUSEHOLDER

R.C. R. MICHALAK

DATE 4-24-86

WEATHER MILD

TEMP. 50°

ROUTE U.S. # 20

COUNTY FULTON

TOWNSHIP     

SECTION 21.91

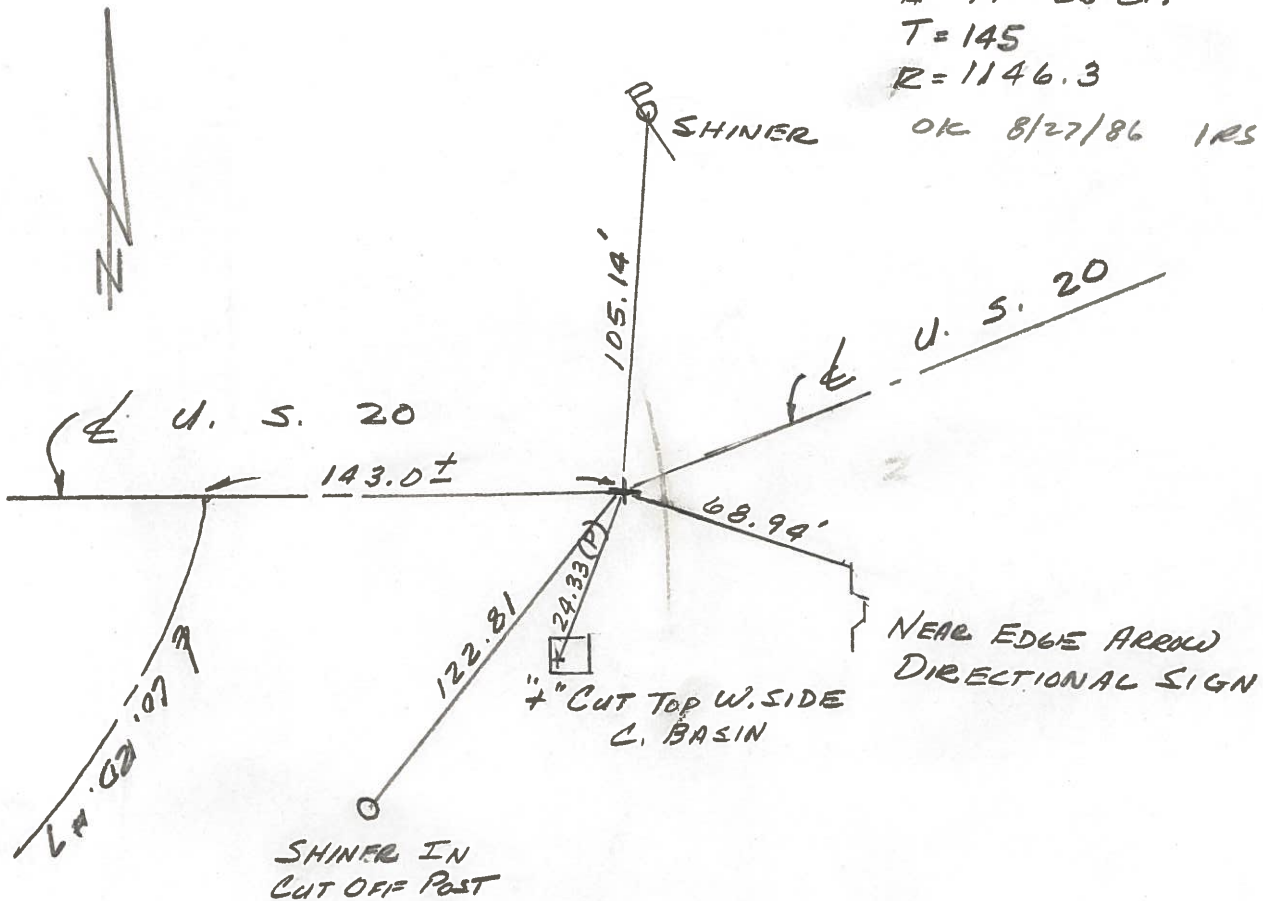
T      R     

TYPE MONUMENT "+" CUT IN CONC.  
 ON SURFACE - BELOW DN SURFACE  
 LEFT- &lt;math>\epsilon</math> PAV'T. - RIGHT 2' N. OF S. EDGE PAV'T  
     TO      EDGE PAVEMENT  
 S.L.M. 1159 + 32.43

24	19
29	30

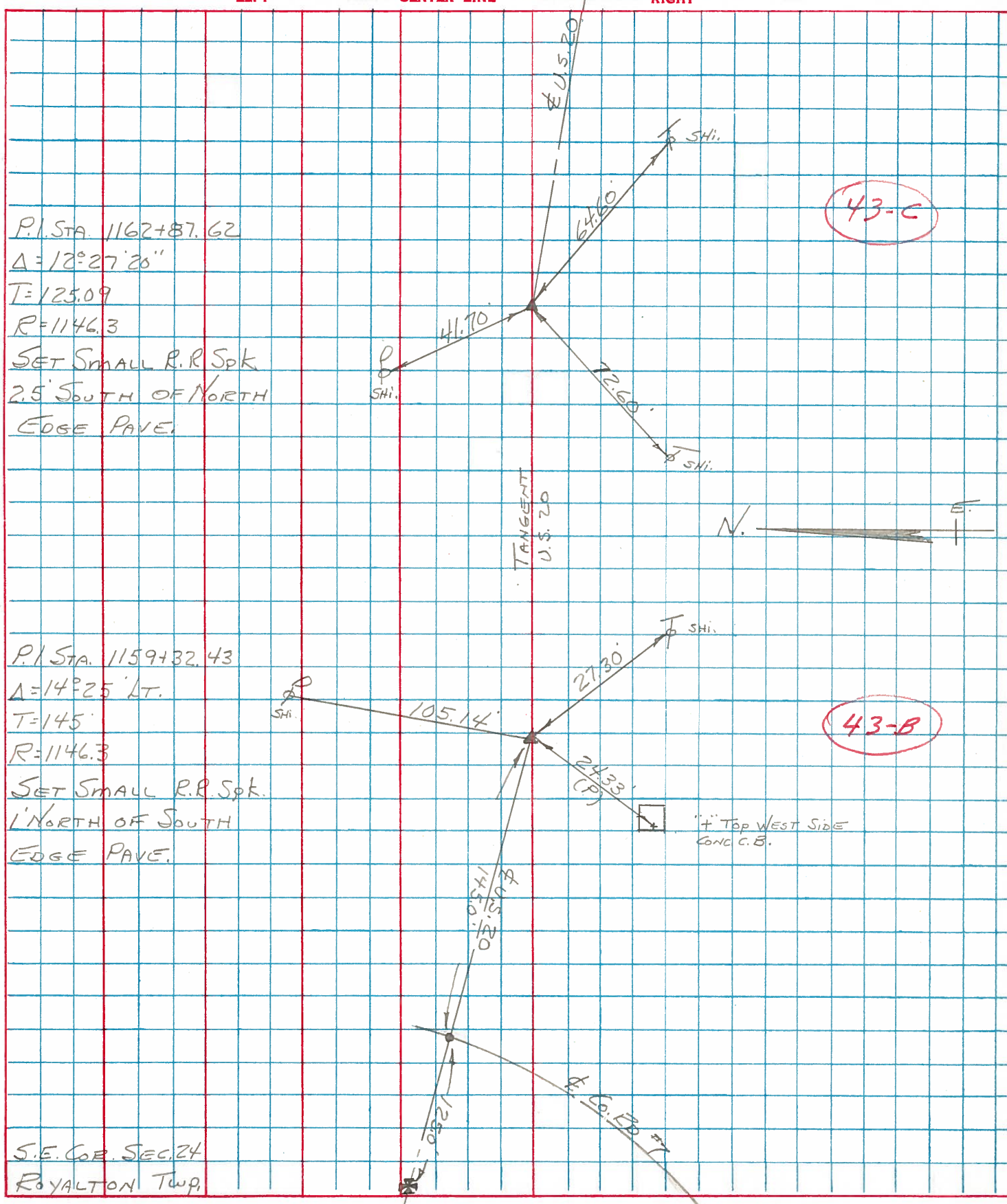


P.I. STA. 1159 + 32.43  
 $\Delta = 14^\circ - 25' \text{ LT.}$   
 $T = 145$   
 $R = 1146.3$   
 OK 8/27/86 IRS



PERSONNEL	TITLE	PERSONNEL	TITLE	COUNTY	FULTON	DATE	6-14-74
BURNSIDE				S. R.	U.S. 20	WEATHER	CLEAR
SMITH				SEC.	Br- 21.91	TEMP.	+70°
BOWERS							
MEAD							

DESCRIPTION CONTROL TIES JOB NO. \_\_\_\_\_



PERSONNEL TITLE PERSONNEL TITLE COUNTY Fulton DATE JUNE 20, 1973  
Tomsic \_\_\_\_\_ Boyle \_\_\_\_\_  
Neuser \_\_\_\_\_  
Granata \_\_\_\_\_  
Vanya \_\_\_\_\_  
 S. R. U. S. 20 WEATHER \_\_\_\_\_  
 SEC. Royalton TWP. TEMP \_\_\_\_\_

DESCRIPTION LEFT CENTER LINE RIGHT JOB NO.

