

O.D.O.T. DISTRICT 2 SURVEY OFFICE (USE ONLY)

PERSONNEL _____ REFERENCE NO. 43 C SHEET 7 OF 28
 NOTES RHOADES DATE 4/11/17 ROUTE US 20
 H.C. O'DONNELL WEATHER CLEAR COUNTY FULTON
 R.C. RHOADES TEMP. 56° TOWNSHIP AMBOY
 DWG BY NIESE PID NO PID R/W SECTION 19
 T 9 S R 4 E

TYPE MONUMENT P.K. SHANK (HOLE)

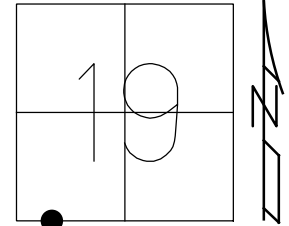
ON SURFACE - ~~BELOW~~ ON

OFFSET ☉ PAVEMENT 1.7' TO N EP LT : RT
1.7' TO LT EDGE PAVEMENT

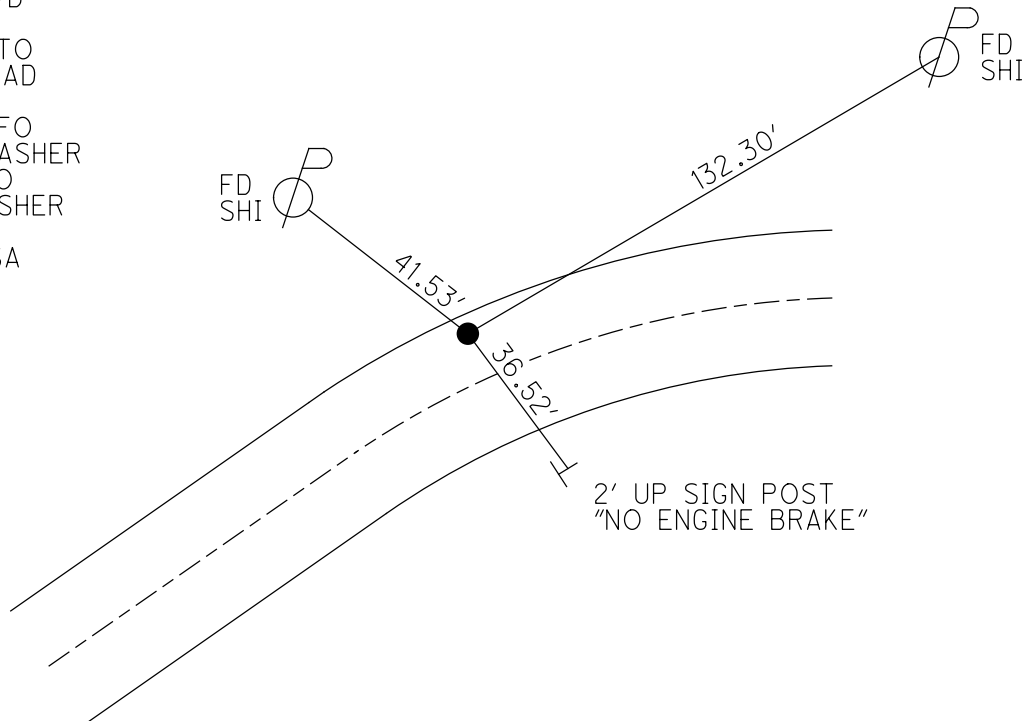
STATION: 1157+05.88

HORZ.DATUM: NAD83 2011 GEOID: NAVD88 2018

GRID: NORTHING: 733761.661 EASTING: 1560102.346



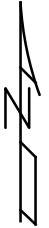
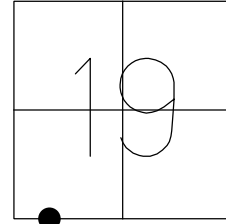
RECORD: P.I.
 STA. 1162+87.62
 $\Delta = 12^\circ 27' 20''$
 T = 125.09'
 R = 1146.3
 SET P.K./WASHER
 6/21/01, BVD
 D.N.F.
 TIES X-ED TO
 HOLE IN ROAD
 REFC43
 10/13/15, JFO
 SET MAG/WASHER
 4/11/17, JFO
 FD MAG/WASHER
 REFC43
 1/14/22, DSA



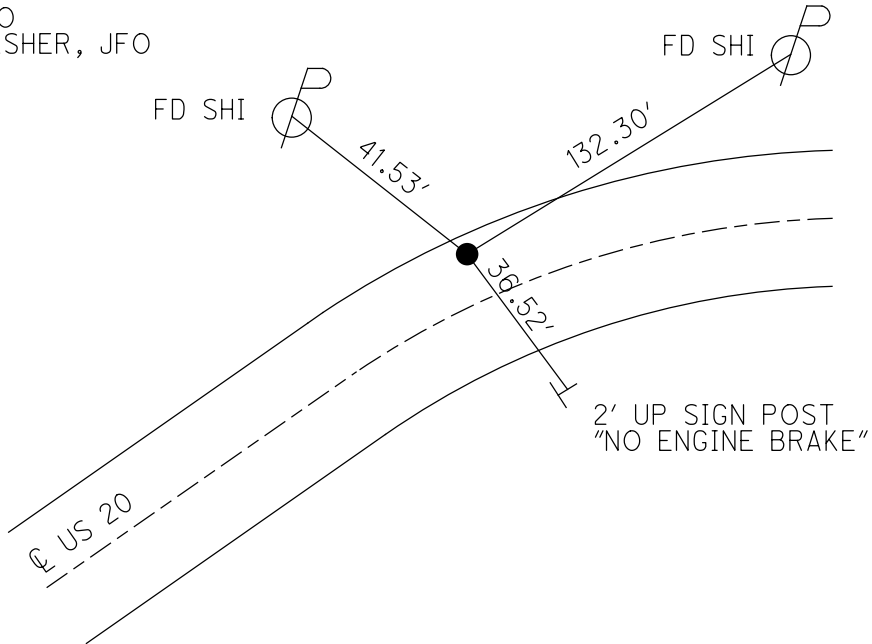
O.D.O.T. DISTRICT 2 SURVEY OFFICE (USE ONLY)

PERSONNEL	REFERENCE NO.	<u>43C</u>	SHEET	<u>7</u>	OF	<u>28</u>
NOTES	RHOADES	DATE	<u>4/11/17</u>	ROUTE	<u>US 20</u>	
H.C.	O'DONNELL	WEATHER	<u>CLEAR</u>	COUNTY	<u>FULTON</u>	
R.C.	HELDMAN	TEMP.	<u>56°</u>	TOWNSHIP	<u>ROYALTON</u>	
				SECTION	<u>19</u>	
				T	<u>9</u>	S
				R	<u>4</u>	E

TYPE MONUMENT _____ P.K. SHANK (HOLE)
 ON SURFACE - ~~BELOW~~ _____ ON
 LEFT - \odot PAV'T - ~~RIGHT~~ 1.7' TO N EP
1.7' TO LT EDGE PAVEMENT
 S.L.M. _____ 1157+05.88
 GRID: NORTHING: 733761.661 EASTING: 1560102.346



RECORD:
 PI. STA. 1162+87.62
 $\Delta = 12^\circ 27' 20''$
 T = 125.09'
 R = 1146.3
 SET P.K./WASHER
 6-21-01, BVD
 D.N.F. P.K./WASHER
 TIES GOOD TO HOLE IN ROAD
 REFC43
 10-13-15, JFO
 SET MAG/WASHER, JFO



O.D.O.T. DISTRICT 2 SURVEY OFFICE

PERSONNEL

REFERENCE NO. 43 C

SHEET 6 OF 27

NOTES HUSS

DATE 7/24/00

ROUTE US 20

H.C. CORDES

WEATHER PT. CLOUDY, FAIR

COUNTY FULTON

R.C. KARGER

TEMP. 72°

TOWNSHIP AMBOY

SECTION 19

T 9 S R 4 E

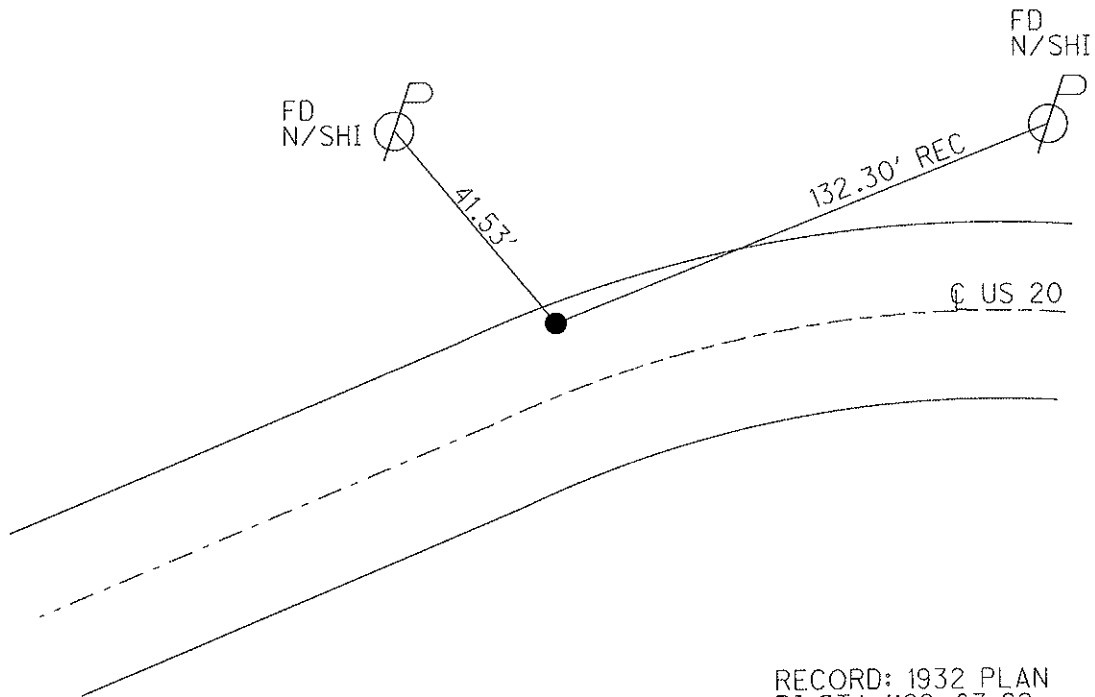
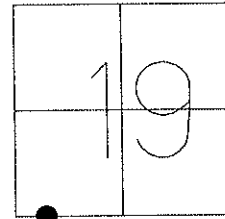
TYPE MONUMENT SM.R.R.SPIKE

ON SURFACE - ~~BELOW~~ ON

LEFT - C PAV'T - RIGHT 1.7' to N. E.O.P.
1.7' TO LT EDGE PAVEMENT

S.L.M. 1164+23

Grid: Northing: _____ Easting: _____



RECORD: 1932 PLAN
PT. STA. 1162+87.62
 $\Delta = 12^\circ 27' 20''$
T = 125.09'
R = 1146.3

SET P.K./WASHER
6/21/01, BVD

O.D.O.T. DISTRICT 2 SURVEY OFFICE

PERSONNEL

REFERENCE NO. 43-C

SHEET 7 OF 26

NOTES Huss

H.C. Cordes

R.C. Karger

DATE 7-24-00

WEATHER Pt Cldy-Fair

TEMP. +72° F

ROUTE US 20

COUNTY FULTON

TOWNSHIP AMBOY

SECTION 19

T 9 S R 4 E

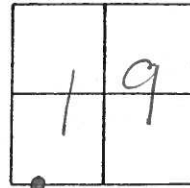
TYPE MONUMENT Sm. RR Spk.

ON SURFACE - BELOW Surface

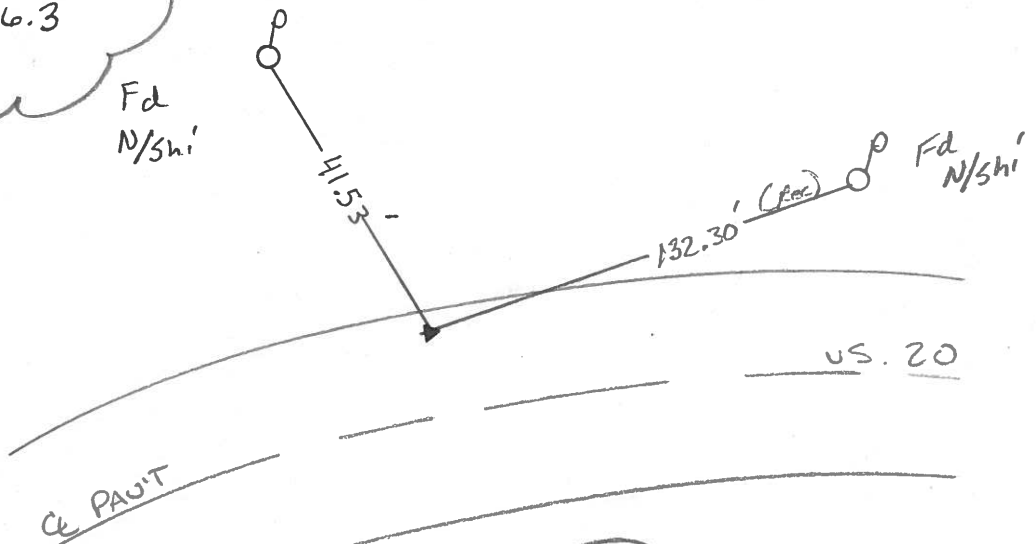
LEFT- & PAV'T. - RIGHT 1.7' to NEOP.

1.7 TO LT. EDGE PAVEMENT

S.L.M. 1164 + 23



RECORD: P1 = 1162 + 87.62
 1932 Δ = 12° - 27' - 20"
 PLAN T = 125.09'
 R = 1146.3



SET PK & WASHER
 6-21-01
 BVD

O.D.O.T. DISTRICT 2 SURVEY OFFICE

PERSONNEL

REFERENCE NO. 43-C SHEET 6 OF

NOTES D. CURTIS

H.C. J. HOUSEHOLDER DATE 4-24-86

R.C. R. MICHALAK WEATHER FAIR
 _____ TEMP. 55°

ROUTE U.S. # 20

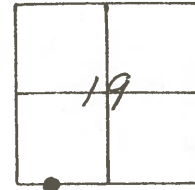
COUNTY FULTON

TOWNSHIP AMBOY

SECTION 19

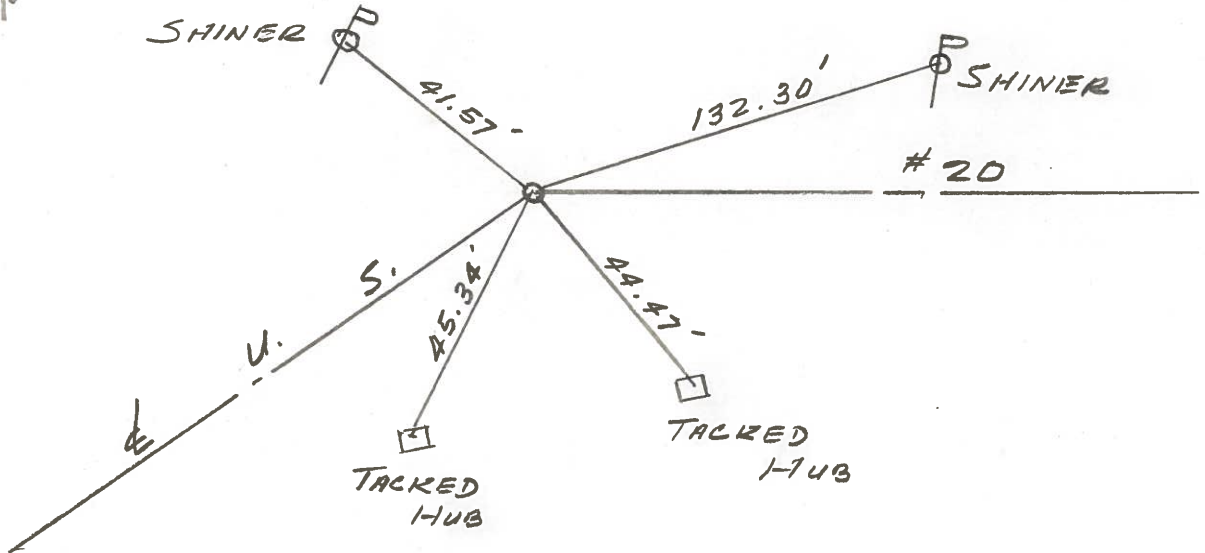
T R

TYPE MONUMENT LG. R.R. SPK.
 ON SURFACE - BELOW 1" BELOW
 LEFT - CL. PAV'T. - RIGHT 2.5' N. TO N. EDGE PNT
 TO EDGE PAVEMENT
 S.L.M. 1162 + 87.62



Set Small Spk. 8/27/86

P.I. 1162 + 87.62
 $\Delta = 12^{\circ} - 27' - 20''$
 $T = 125.09'$
 $R = 1146.3$



County FULTON S.R. US-20

Date 9 MAY 1979

Township AMBOY

Weather WARM

Section 19

Temp. 80°

T_N, R_E

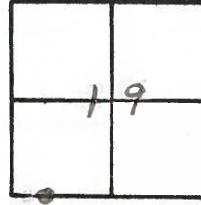
Personnel I. STONE

R. MICHALAK

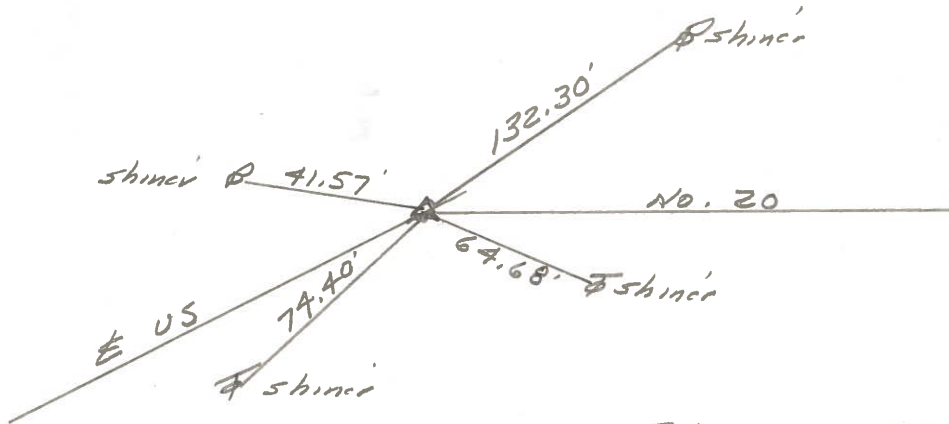
P. NEUSER

D. CURTIS

D. GRANATA



REF. NO. 43C

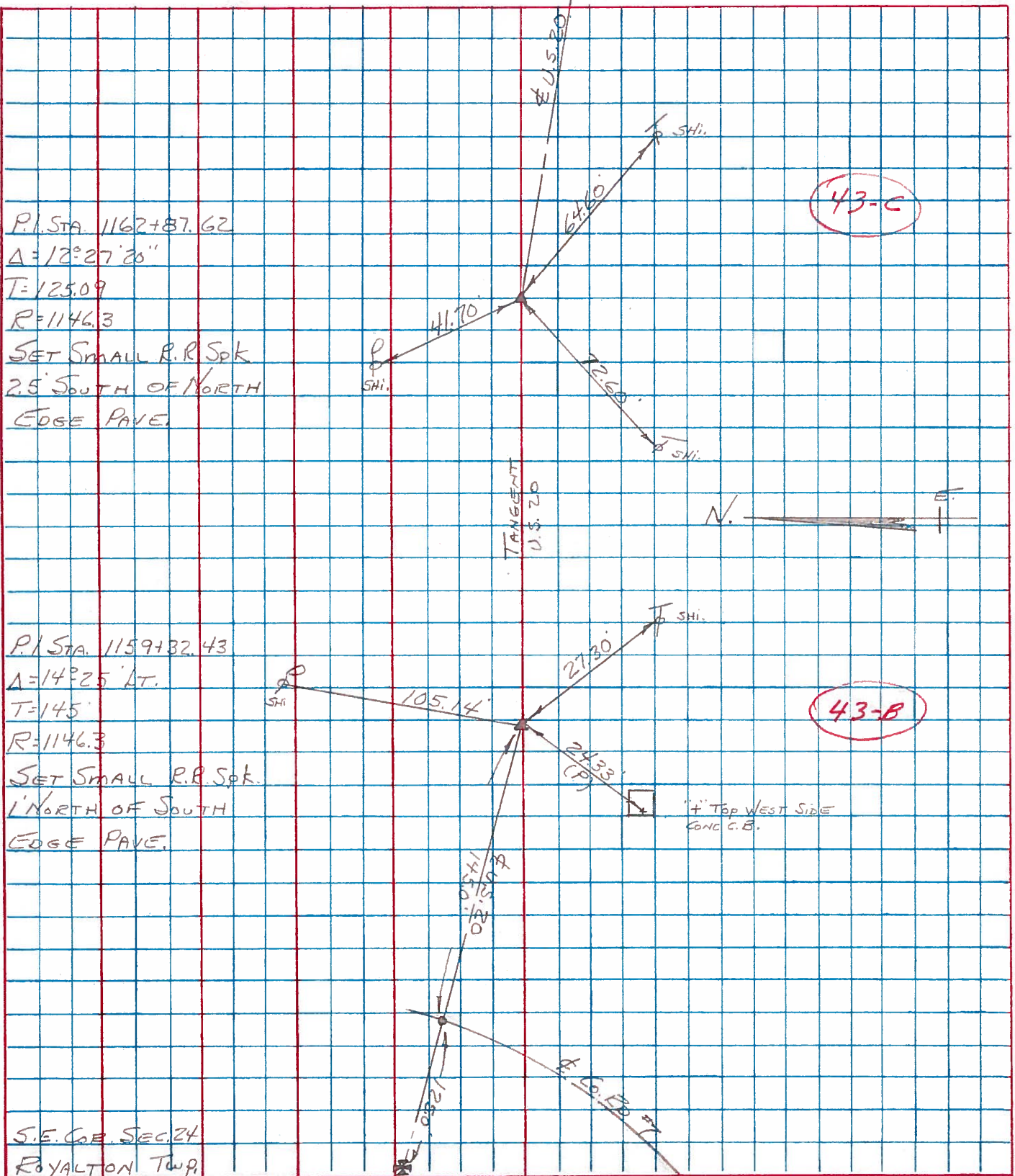


Fd. Small RR Spt. = P.I.
 Sta. 1162 + 87.62
 $\Delta = 120^{\circ} 27' 20''$
 $T = 125.09'$
 $R = 1146.3$
 2.5' N. to N. edge put.
 24.6' S. to S. edge put.

PERSONNEL TITLE PERSONNEL TITLE
BURNSIDE _____
SMITH _____
BOWERS _____
MEAD _____

COUNTY FULTON DATE 6-14-74
 S. R. U.S. 20 WEATHER CLEAR
 SEC. Br- 21.91 TEMP. +70°

DESCRIPTION CONTROL TIES JOB NO. _____



PERSONNEL	TITLE	PERSONNEL	TITLE	COUNTY	Fulton	DATE	JUNE 20, 1975
Tomsic		Boyle		S. R.	U. S. 20	WEATHER	
Neuser				SEC.	Royalton TWP.	TEMP.	
Granata							
Vanya							

DESCRIPTION	LEFT	CENTER LINE	RIGHT	JOB NO.
-------------	------	-------------	-------	---------

