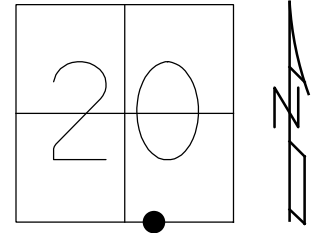


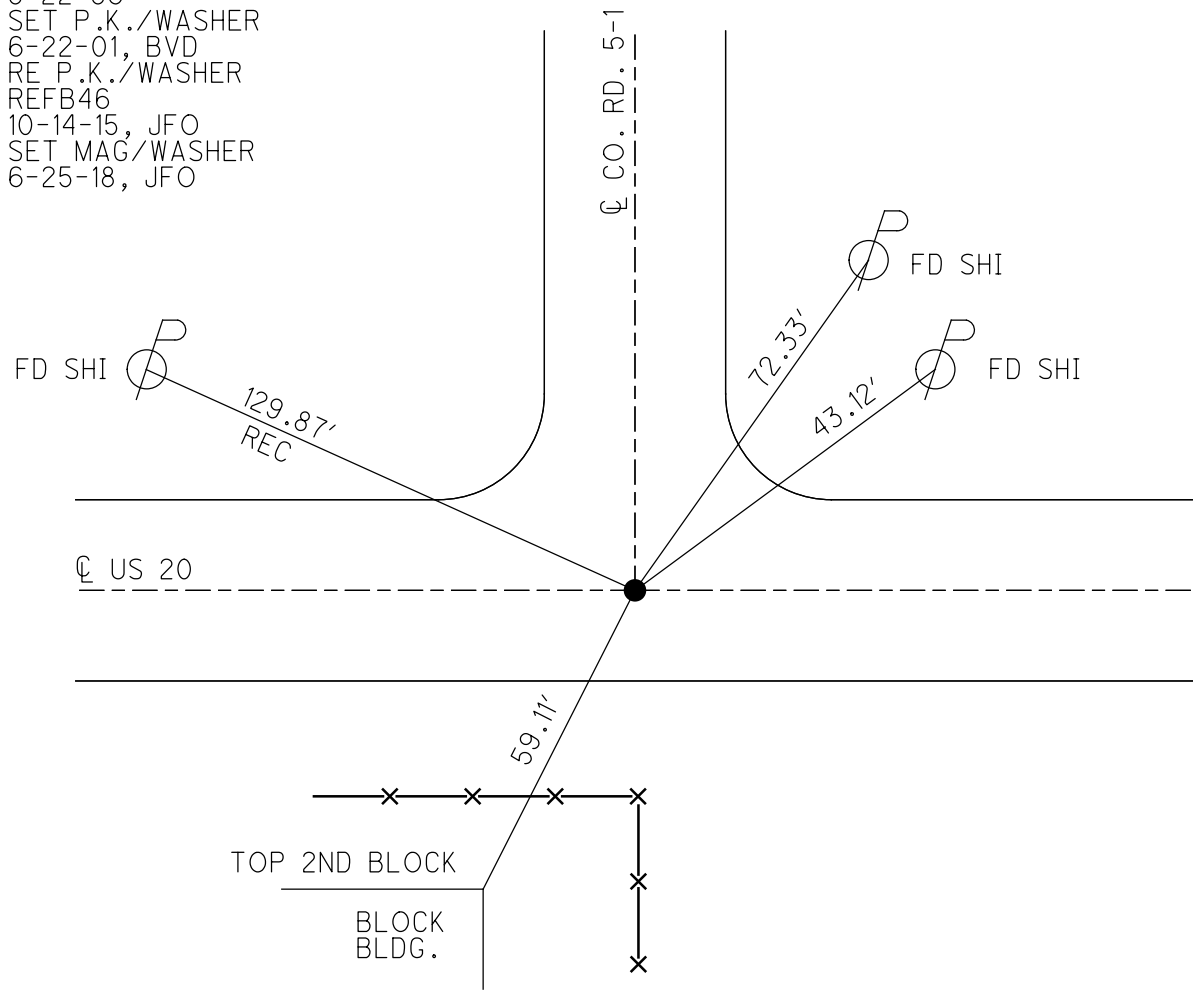
O.D.O.T. DISTRICT 2 SURVEY OFFICE (USE ONLY)

PERSONNEL	REFERENCE NO.	46B	SHEET	13	OF	28
NOTES	RHOADES	DATE	4/11/17	ROUTE	US 20	
H.C.	O'DONNELL	WEATHER	CLOUDY	COUNTY	FULTON	
R.C.	HELDMAN	TEMP.	56°	TOWNSHIP	AMBOY	
				SECTION	20	
				T	9	S
				R	4	E

TYPE MONUMENT _____ P.K./WASHER _____
 ON SURFACE - ~~BELOW~~ _____ ON _____
~~LEFT~~ - Q PAV'T - ~~RIGHT~~ _____ ON _____
 _____ TO _____ EDGE PAVEMENT _____
 S.L.M. _____ 1249+72.25 _____
 GRID: NORTHING: 733713.820 EASTING: 1569368.578



RECORD:
 1/4, 1/4COR. SEC. 20
 SET P.K./WASHER,
 8-22-86
 SET P.K./WASHER
 6-22-01, BVD
 RE P.K./WASHER
 REFB46
 10-14-15, JFO
 SET MAG/WASHER
 6-25-18, JFO



O.D.O.T. DISTRICT 2 SURVEY OFFICE

PERSONNEL _____

REFERENCE NO. 46 B

SHEET 12 OF 27

NOTES HUSS

DATE 7/24/00

ROUTE US 20

H.C. CORDES

WEATHER PT. CLOUDY, FAIR

COUNTY FULTON

R.C. KARGER

TEMP. 76°

TOWNSHIP AMBOY

SECTION 20

T 9 S R 4 E

TYPE MONUMENT P.K./WASHER

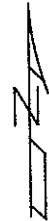
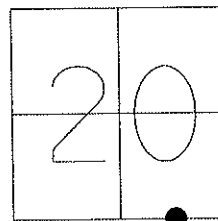
ON SURFACE - ~~BELOW~~ ON

LEFT - C PAV'T - RIGHT ON

TO EDGE PAVEMENT

S.L.M. 1257+05

Grid: Northing: _____ Easting: _____

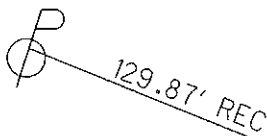


RECORD:

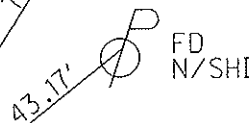
1/4, 1/4 CORNER SEC 20
SET P.K./WASHER, 8/22/86

SET P.K./WASHER
6/22/01, BVD

FD
N/SHI



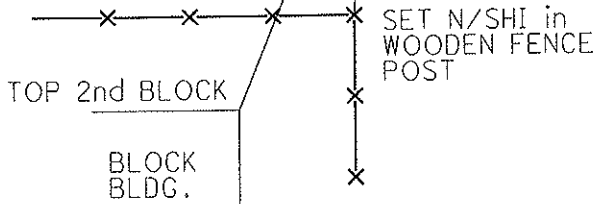
C CO. RD. 5



C US 20

59.11'

29.95'



O.D.O.T. DISTRICT 2 SURVEY OFFICE

PERSONNEL _____

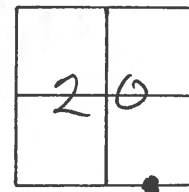
REFERENCE NO. 46-13 SHEET 13 OF 26

NOTES Huss
 H.C. Condes
 R.C. Karger

DATE 7-24-00
 WEATHER Pt Cldy-Fair
 TEMP. 76 °F

ROUTE US-20
 COUNTY Fulton
 TOWNSHIP Ambroy
 SECTION 20
T9 S R 4 E

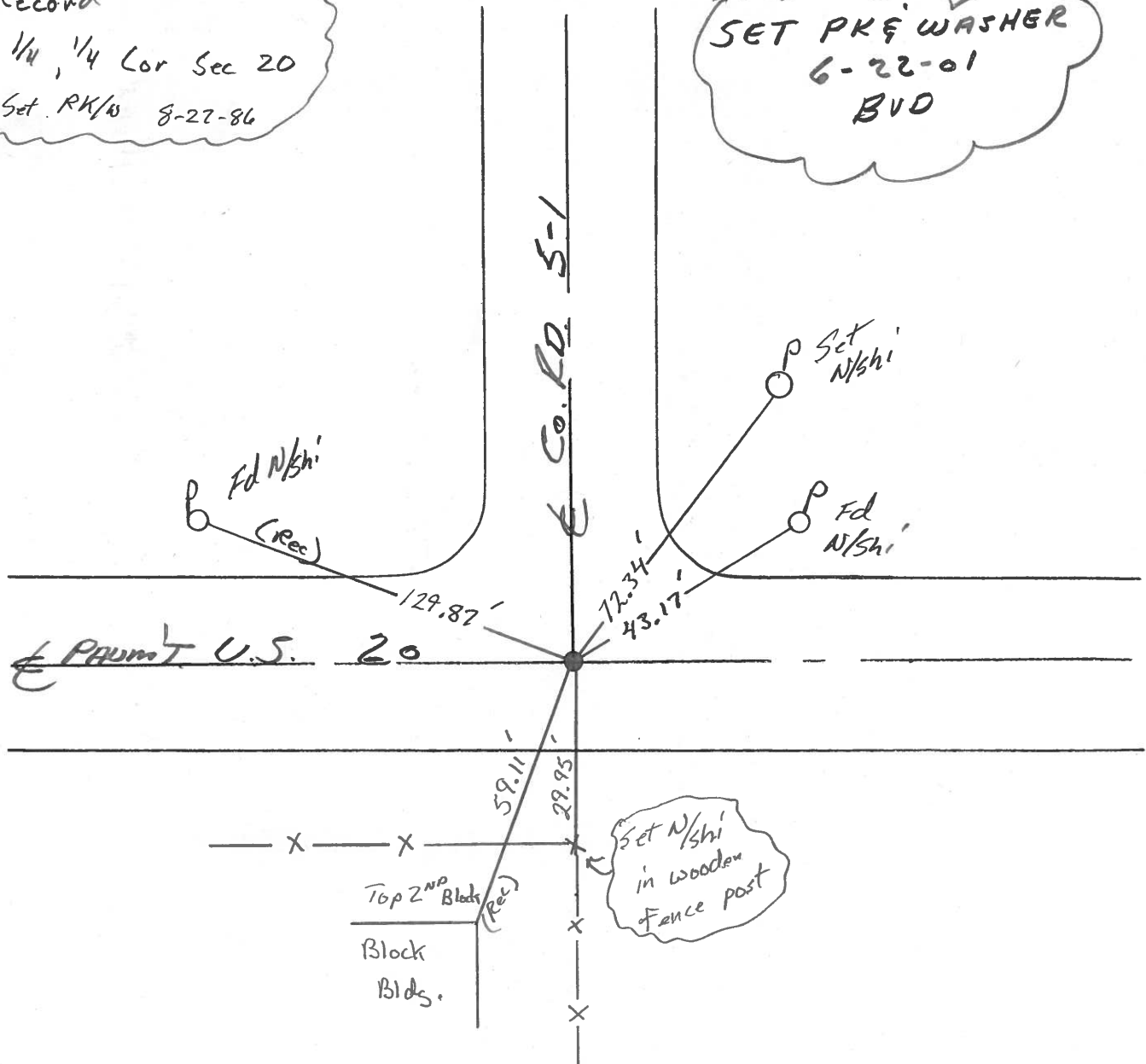
TYPE MONUMENT PK/W
~~ON SURFACE~~ - ~~BELOW~~ Surface
~~WEST - & PAV'T. - RIGHT~~ E Pavt.
TO EDGE PAVEMENT
 S.L.M. 1257 +05



Record

1/4, 1/4 Cor Sec 20
Set PK/W 8-27-86

SET PK & WASHER
 6-22-01
 BVD



O.D.O.T. DISTRICT 2 SURVEY OFFICE

PERSONNEL

REFERENCE NO. 46-8

SHEET 12 OF

NOTES D. CURTIS

H.C. J. HOUSEHOLDER

R.C. R. MICHALAK

DATE 4-29-86

WEATHER MILD

TEMP. 55°

ROUTE U.S. #20

COUNTY FULTON

TOWNSHIP AMBOY

SECTION 20

T R

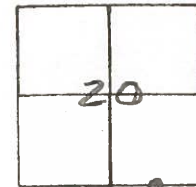
TYPE MONUMENT P.K. NAIL

ON SURFACE - BELOW ON SURFACE

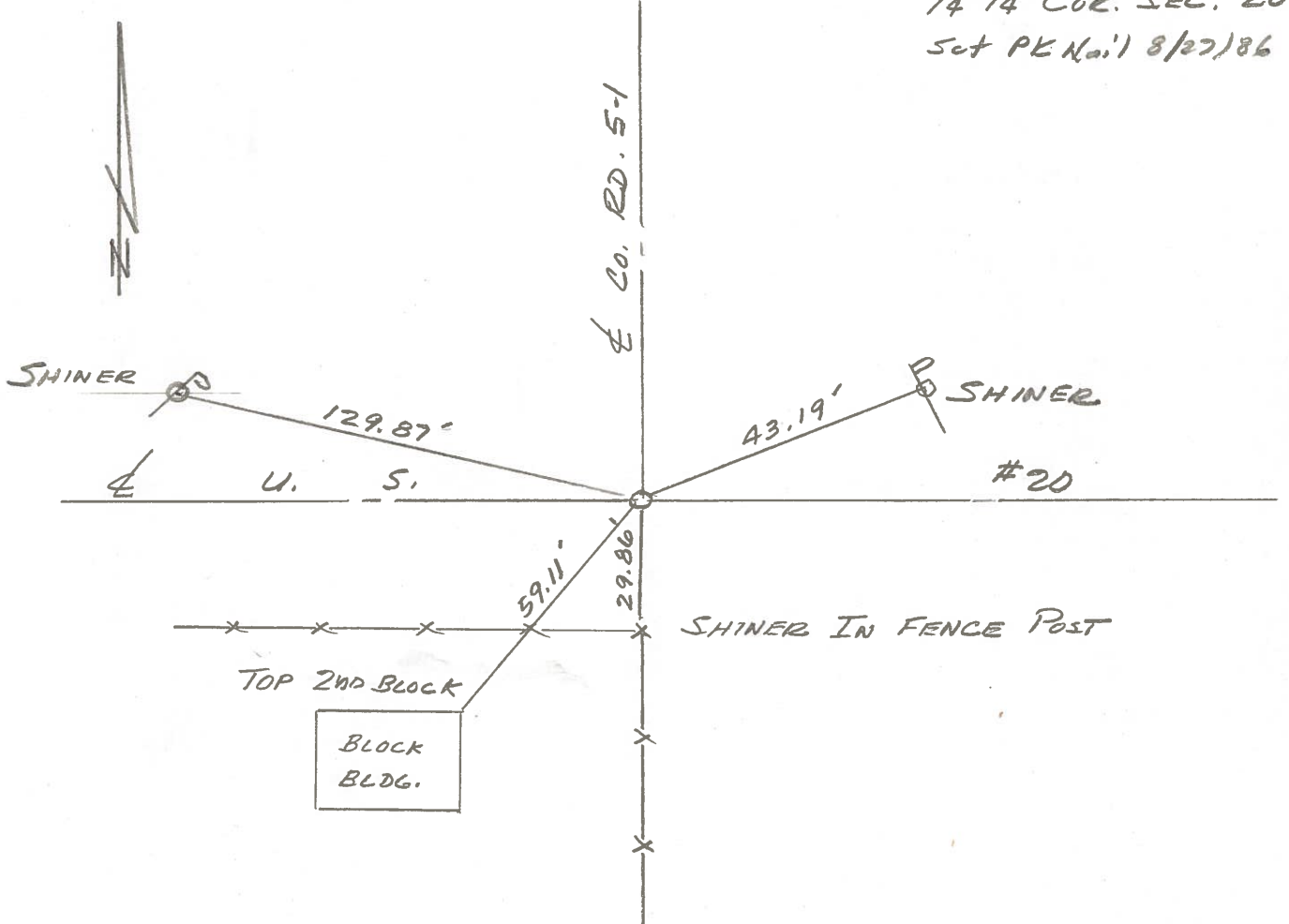
LEFT- & PAV'T. - RIGHT & PAV'T

TO EDGE PAVEMENT

S.L.M.



*1/4 1/4 Cor. SEC. 20
Set PK Nail 8/27/86*



O.D.O.T. DISTRICT 2 SURVEY OFFICE

Sht. 13 of

County FULTON S.R. US-20

Township AMBOY

Section 20

T N, R E

Personnel I. STONE

R. MICHALAK

P. NEUSER

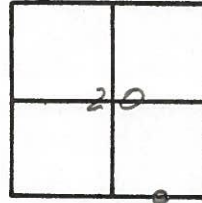
D. CURTIS

D. GRANATA

Date 9 MAY 1979

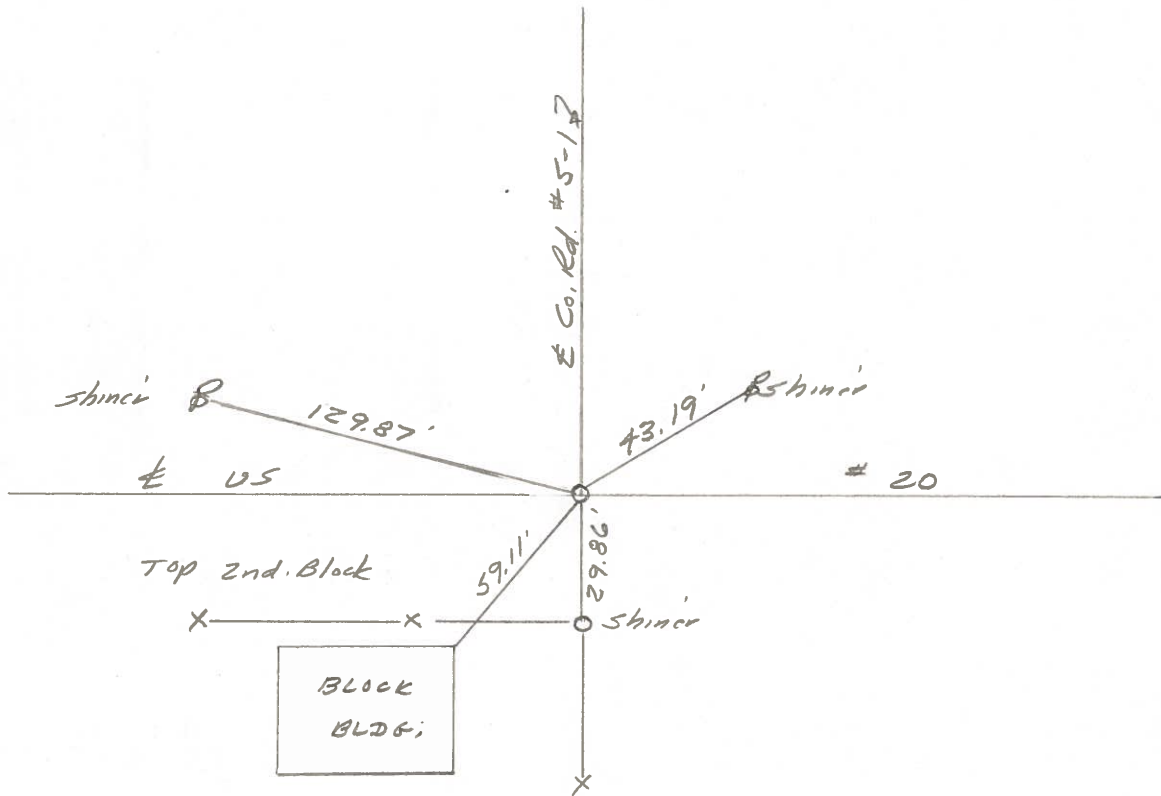
Weather WARM

Temp. 82°



Ref. No. 46B

1/4 1/4 Cor. Sec. 20



Fd. PK Nail to Surface
11.9' to S. edge put.

PERSONNEL	TITLE	PERSONNEL	TITLE	COUNTY	DATE	WEATHER	TEMP
Tomsic				Fulton	Aug. 29, 1975		
Granata				U.S. 20			
Vanyo				SEC. <u>AMBOLD TWP</u>			
Boyle							

DESCRIPTION LEFT CENTER LINE RIGHT JOB NO.

