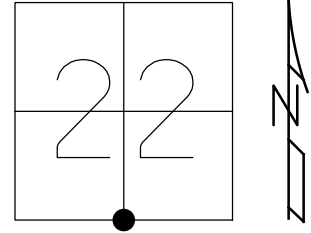


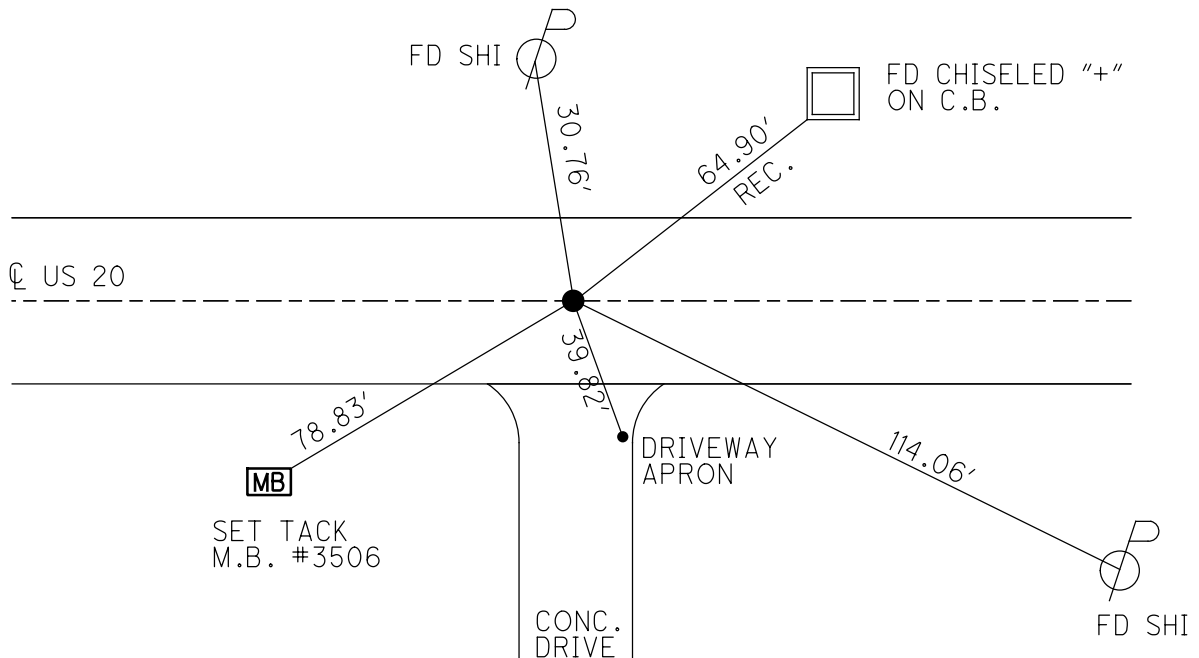
O.D.O.T. DISTRICT 2 SURVEY OFFICE (USE ONLY)

PERSONNEL	REFERENCE NO.	50A	SHEET	19	OF	28
NOTES	RHOADES	DATE	4/12/17	ROUTE	US 20	
H.C.	O'DONNELL	WEATHER	FAIR	COUNTY	FULTON	
R.C.	HELDMAN	TEMP.	46°	TOWNSHIP	AMBOY	
				SECTION	22	
				T	9	S
				R	4	E

TYPE MONUMENT \_\_\_\_\_ MAG NAIL \_\_\_\_\_  
 ON SURFACE - ~~BELOW~~ \_\_\_\_\_ ON \_\_\_\_\_  
 LEFT -  $\odot$  PAV'T - ~~RIGHT~~ \_\_\_\_\_ 1' \_\_\_\_\_  
 \_\_\_\_\_ 12' TO RT \_\_\_\_\_ EDGE PAVEMENT  
 S.L.M. \_\_\_\_\_ 1342+55.63  
 GRID: NORTHING: 733815.864 EASTING: 1578650.567



RECORD:  
 FD MAG NAIL  
 SET BY OTHER  
 6-22-01, BVD  
 FD MAG NAIL  
 REFA50  
 10-14-15, JFO  
 SET MAG/WASHER  
 6-25-18, JFO



O.D.O.T. DISTRICT 2 SURVEY OFFICE

PERSONNEL \_\_\_\_\_

REFERENCE NO. 50 A

SHEET 18 OF 27

NOTES KARGER

DATE 7/25/00

ROUTE US 20

H.C. CORDES

WEATHER SUNNY

COUNTY FULTON

R.C. HUSS

TEMP. 68°

TOWNSHIP AMBOY

SECTION 22

T 9 S R 4 E

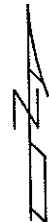
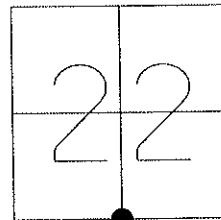
TYPE MONUMENT R.R.SPIKE

~~ON SURFACE~~ - BELOW 2"

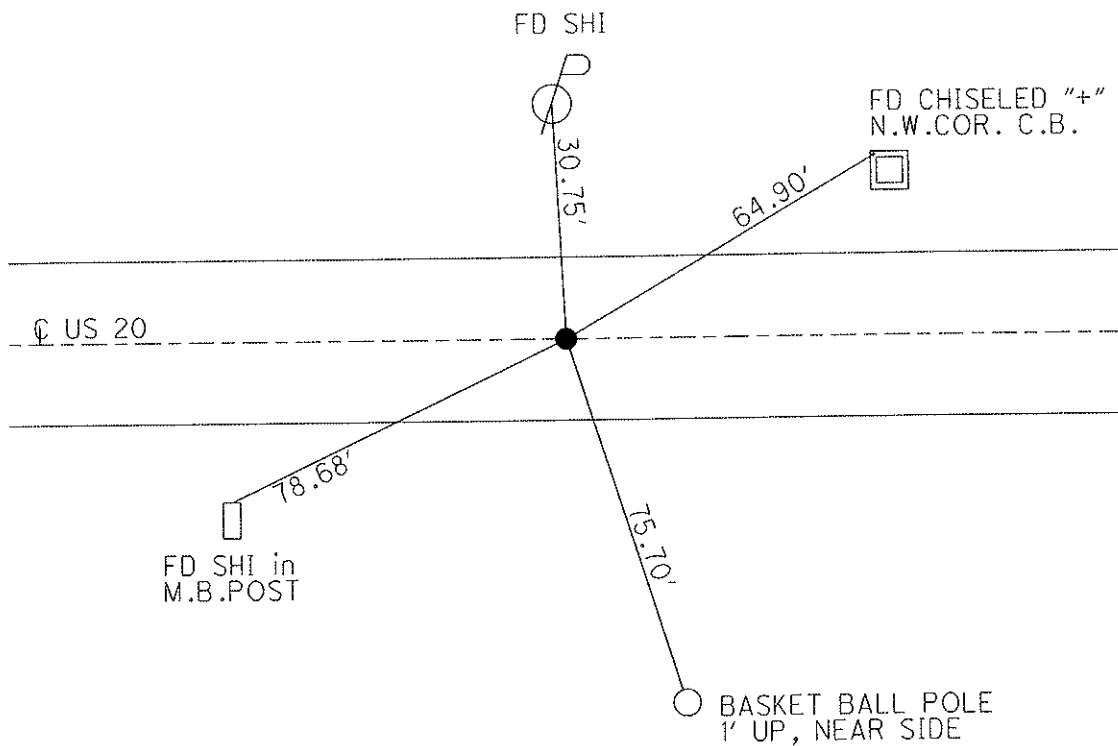
~~LEFT~~ - C PAV'T - RIGHT RT., ?'  
12' TO RT. EDGE PAVEMENT

S.L.M. 1350+38

Grid: Northing: \_\_\_\_\_ Easting: \_\_\_\_\_



FD MAG NAIL  
 SET BY OTHERS  
 6/22/01, BVD



O.D.O.T. DISTRICT 2 SURVEY OFFICE

PERSONNEL

REFERENCE NO. 50-A SHEET 19 OF 26

NOTES KARGER

H.C. CORDES

R.C. HUSS

DATE 7-25-00

WEATHER SUNNY

TEMP. 68° F

ROUTE U.S. 20

COUNTY FULTON

TOWNSHIP AMBOY

SECTION 22

T9S R4E

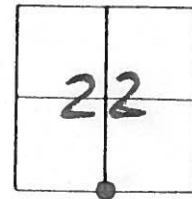
TYPE MONUMENT RR spk

ON SURFACE - BELOW 2" DEEP

~~LEFT - C~~ PAV'T. - RIGHT

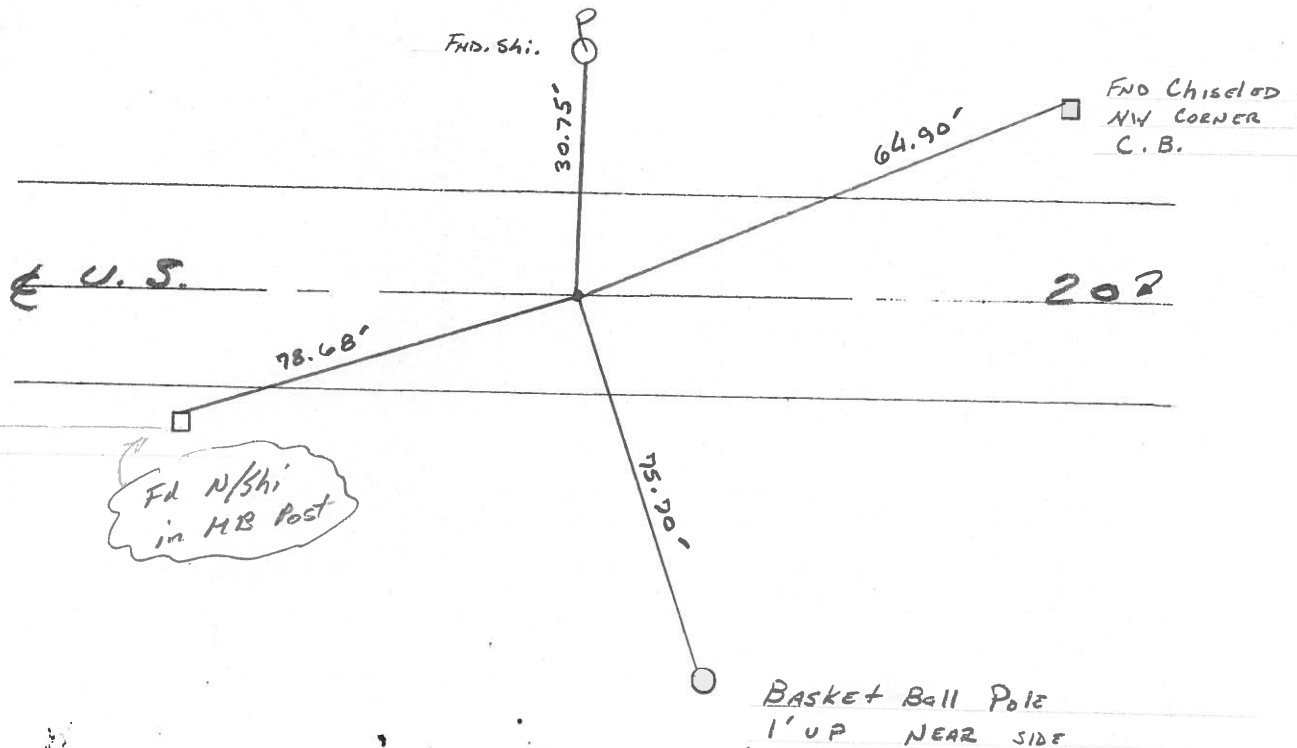
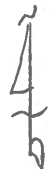
12.0 TO RT EDGE PAVEMENT

S.L.M. 1350+38



OK. 8/27/00 IRS

FD. MAS. NAIL  
SET BY OTHERS  
6-22-01  
BVD



DRAWN  
12-7-00  
TR

O.D.O.T. DISTRICT 2 SURVEY OFFICE

PERSONNEL \_\_\_\_\_

REFERENCE NO. 50-A

SHEET 1B OF \_\_\_\_\_

NOTES 1 Stone

H.C. D. Curtis

R.C. J. Householder

DATE 2 May 86

WEATHER Cool

TEMP. 38°

ROUTE US #20

COUNTY Fulton

TOWNSHIP Amboy

SECTION 22

T. \_\_\_\_\_ R. \_\_\_\_\_

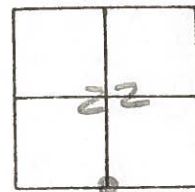
TYPE MONUMENT RR Spt.

ON SURFACE - BELOW 2" deep

LEFT -  $\odot$  PAV'T. - RIGHT \_\_\_\_\_

TO \_\_\_\_\_ EDGE PAVEMENT

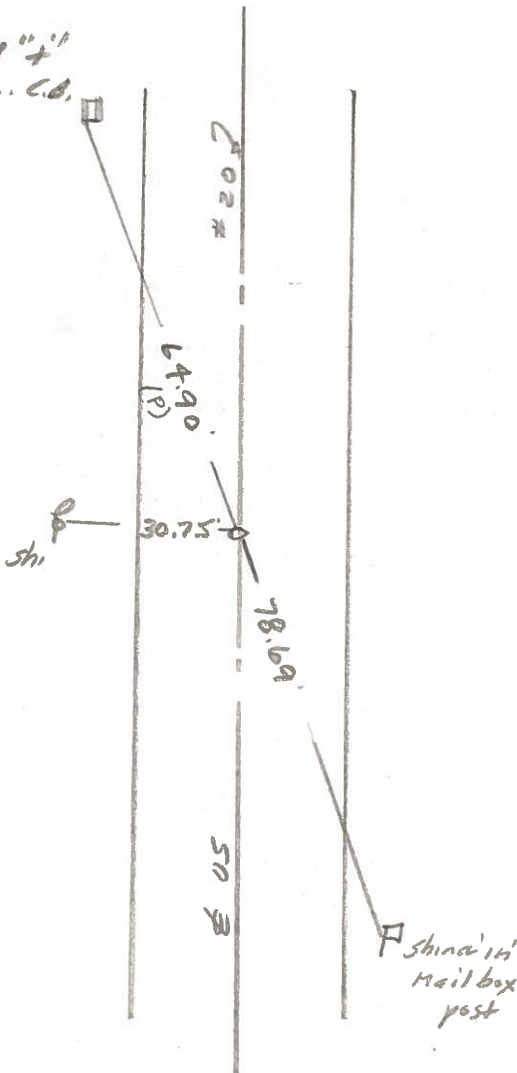
S.L.M. 1349 + 38



OK 8/27/86 IRS



chiseled "+"  
NW Cor. C.B.



OD.O.T. DISTRICT 2 SURVEY OFFICE

Sht. 19 of

County Fulton US# 20

Date 14 May 1979

Township Amberg

Weather Clear

Section 22

Temp. 60°

T    N, R    E

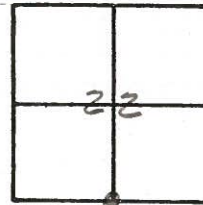
Personnel 1. Stone

R. Michalak

P. Newser

D. Grenada

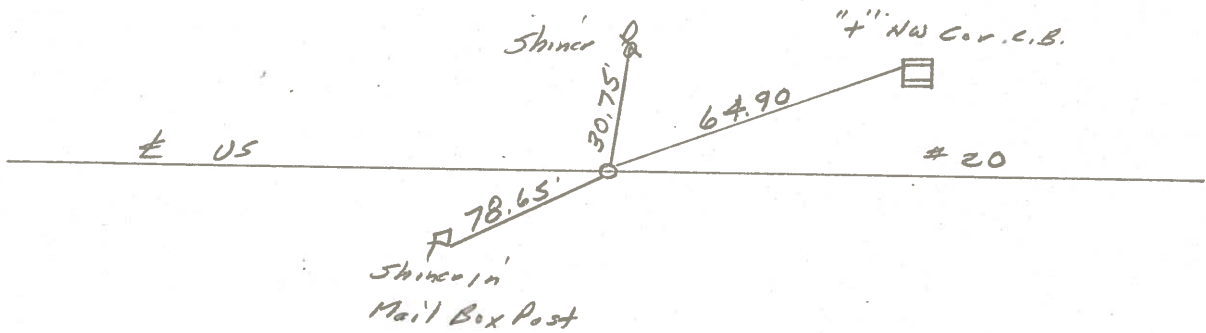
D. Curtis



REF. NO. 50A

5 1/4 Cor. Sec. 22

1/4 mile E. of Co. Rd. #3-3



Fd. RR Spk To Surface  
11.5 to N. edge put.  
12.3 to S. edge put.

PERSONNEL TITLE PERSONNEL TITLE  
 Tomasic \_\_\_\_\_  
 Neuser \_\_\_\_\_  
 Granata \_\_\_\_\_

COUNTY Fulton DATE MAR. 20, 1975  
 S. R. U.S. 20 WEATHER \_\_\_\_\_  
 SEC. AMBAY TWP. TEMP. \_\_\_\_\_

