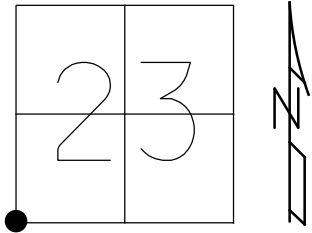


O.D.O.T. DISTRICT 2 SURVEY OFFICE (USE ONLY)

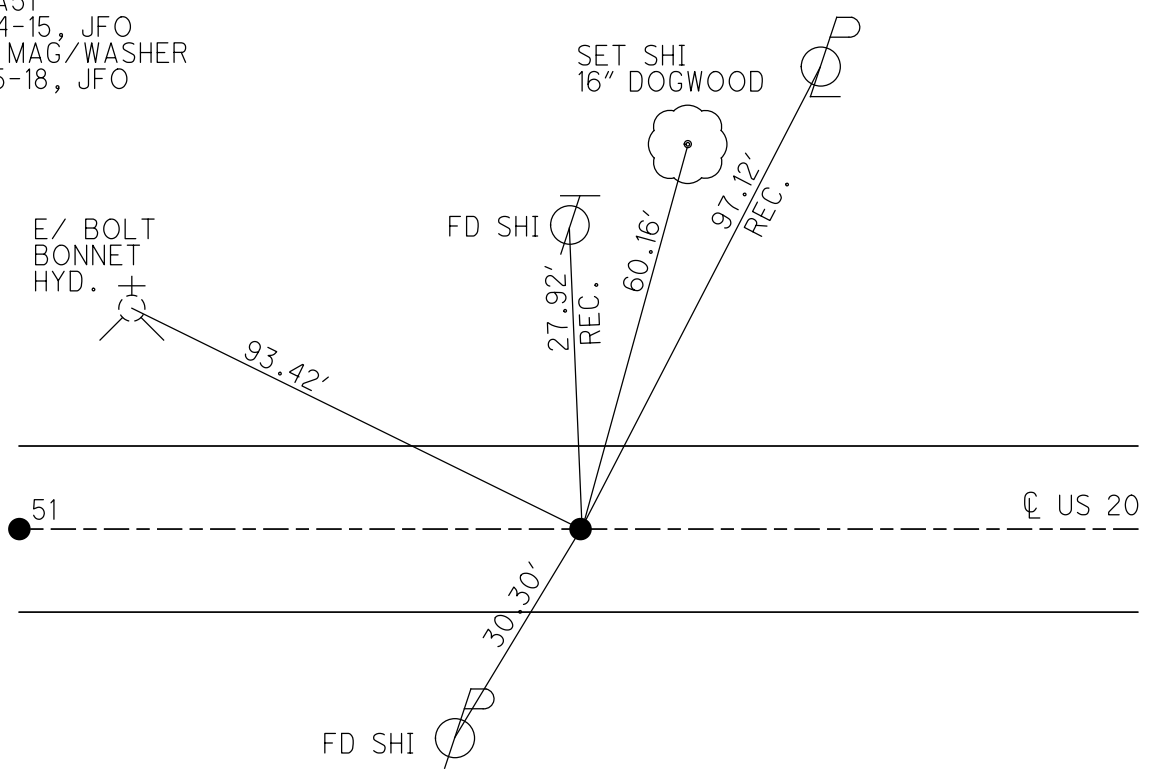
PERSONNEL _____ REFERENCE NO. 51A SHEET 21 OF 28
 NOTES RHOADES DATE 4/12/17 ROUTE US 20
 H.C. O'DONNELL WEATHER CLOUDY COUNTY FULTON
 R.C. HELDMAN TEMP. 46° TOWNSHIP AMBOY
 _____ SECTION 23
 _____ T 9 S R 4 E

TYPE MONUMENT _____ P.K./WASHER _____
 ON SURFACE - ~~BELOW~~ _____ ON _____
~~LEFT~~ - Q PAV'T - RIGHT _____ 1' _____
10.3' TO RT EDGE PAVEMENT _____
 S.L.M. _____ 1370+12.44 _____
 GRID: NORTHING: 733781.818 EASTING: 1581407.1633



51 TO 51A = 179.95'

RECORD:
 SET P.K./WASHER
 6-22-01, BVD
 FD P.K./WASHER
 REFA51
 10-14-15, JFO
 SET MAG/WASHER
 6-25-18, JFO



O.D.O.T. DISTRICT 2 SURVEY OFFICE

PERSONNEL

REFERENCE NO. 51 A

SHEET 20 OF 27

NOTES KARGER

DATE 7/25/00

ROUTE US 20

H.C. CORDES

WEATHER PT.CLOUDY

COUNTY FULTON

R.C. KARGER

TEMP. 72°

TOWNSHIP AMBOY

SECTION 23

T 9 S R 4 E

TYPE MONUMENT P.K./WASHER

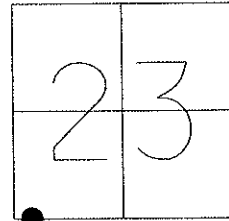
ON SURFACE - ~~BELOW~~ ON

~~LEFT~~ - C PAV'T - RIGHT 1.6'

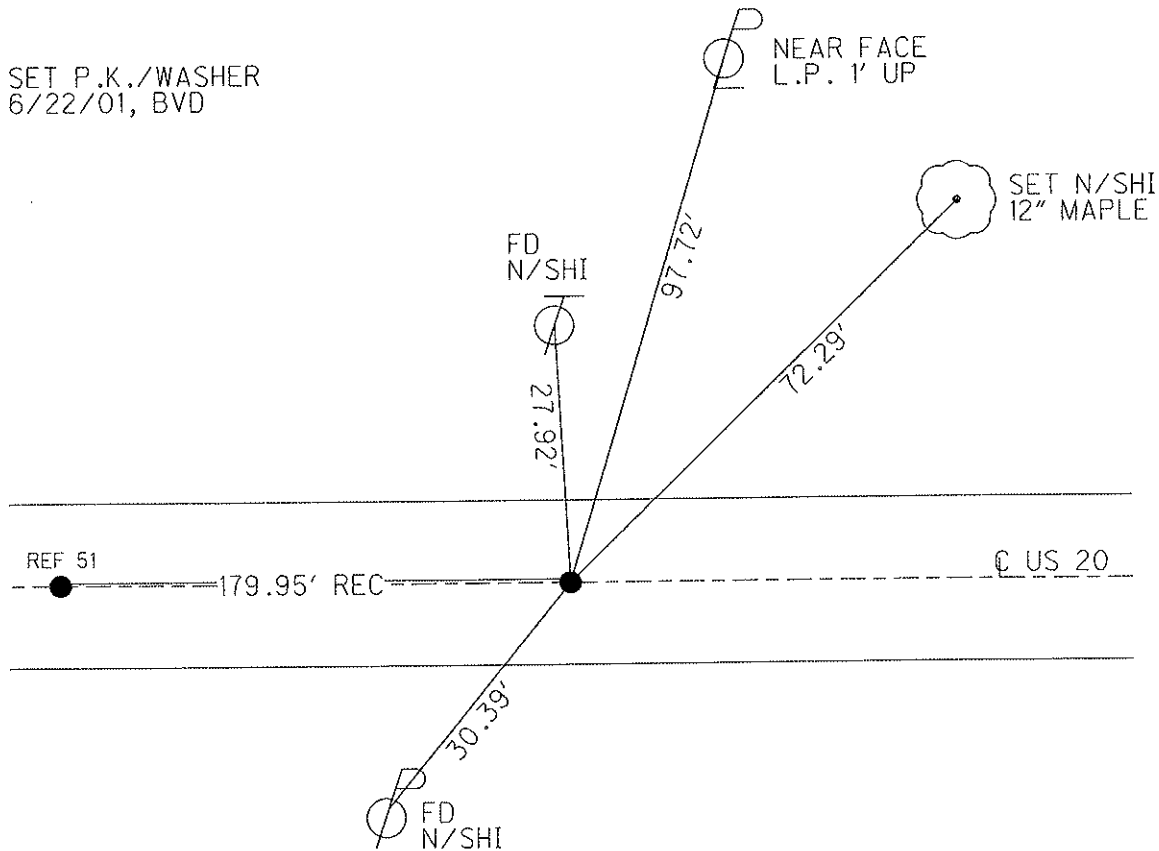
10.3' TO RT EDGE PAVEMENT

S.L.M. 1378+12

Grid: Northing: _____ Easting: _____



SET P.K./WASHER
6/22/01, BVD



O.D.O.T. DISTRICT 2 SURVEY OFFICE

PERSONNEL

REFERENCE NO. 51-A SHEET 21 OF 26

NOTES Kanger

H.C. Condes

R.C. Kanger

DATE 7-25-60

WEATHER Pt Cldy

TEMP. +72° F

ROUTE US-20

COUNTY Fulton

TOWNSHIP Amboy

SECTION 23

T. 9 S. R 4 E

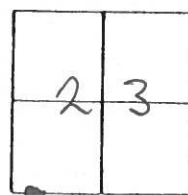
TYPE MONUMENT PK/w

ON SURFACE - ~~BELOW~~ YES

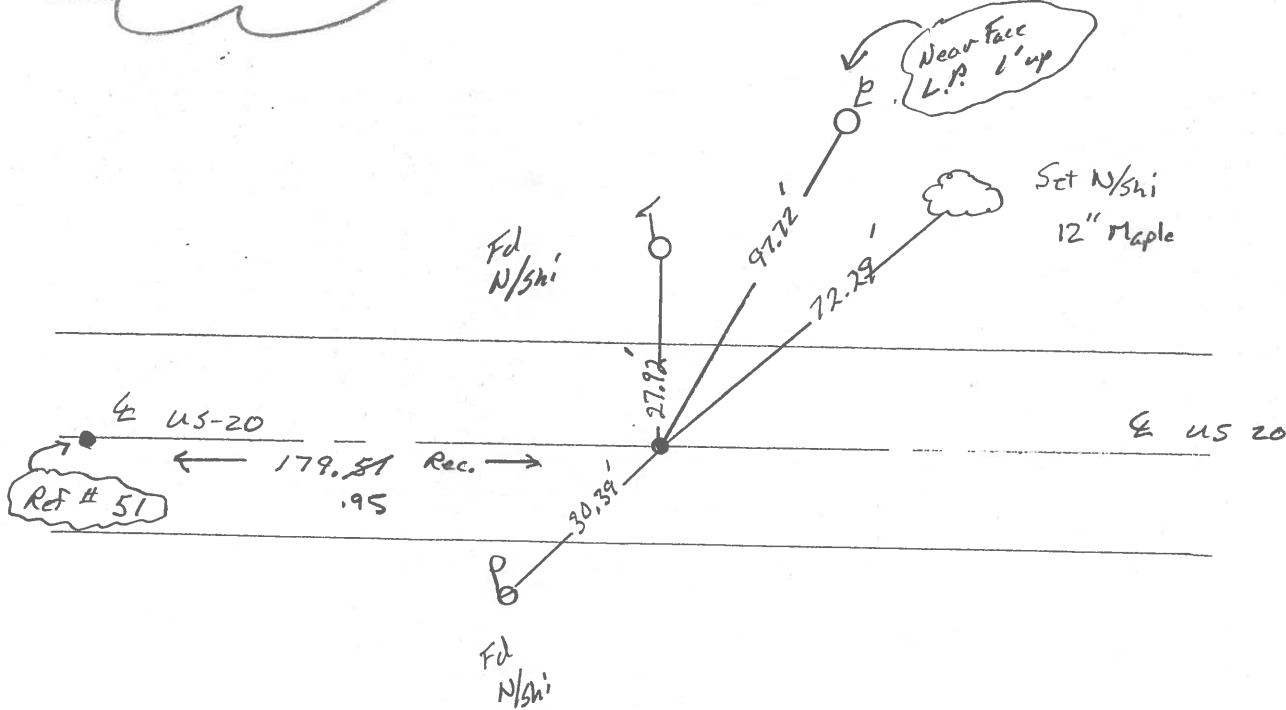
~~VERTICAL POINT~~ - RIGHT 1.6' Rt.

10.3 TO RT. EDGE PAVEMENT

S.L.M. 1378+12



SET PK & WASHER
 6-22-01
 BVD



O.D.O.T. DISTRICT 2 SURVEY OFFICE

PERSONNEL _____

REFERENCE NO. 51-A

SHEET 20 OF _____

NOTES 1. Stone

H.C. D. Curtis

R.C. J. Householder

DATE 2 May 86

WEATHER Cool

TEMP. 40°

ROUTE US # 20

COUNTY Fulton

TOWNSHIP Ambog

SECTION 23

T _____ R _____

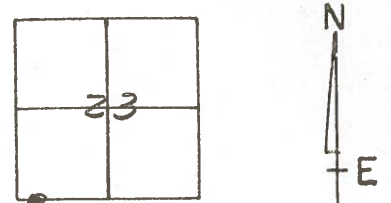
TYPE MONUMENT PK Nail

ON SURFACE - BELOW Surface

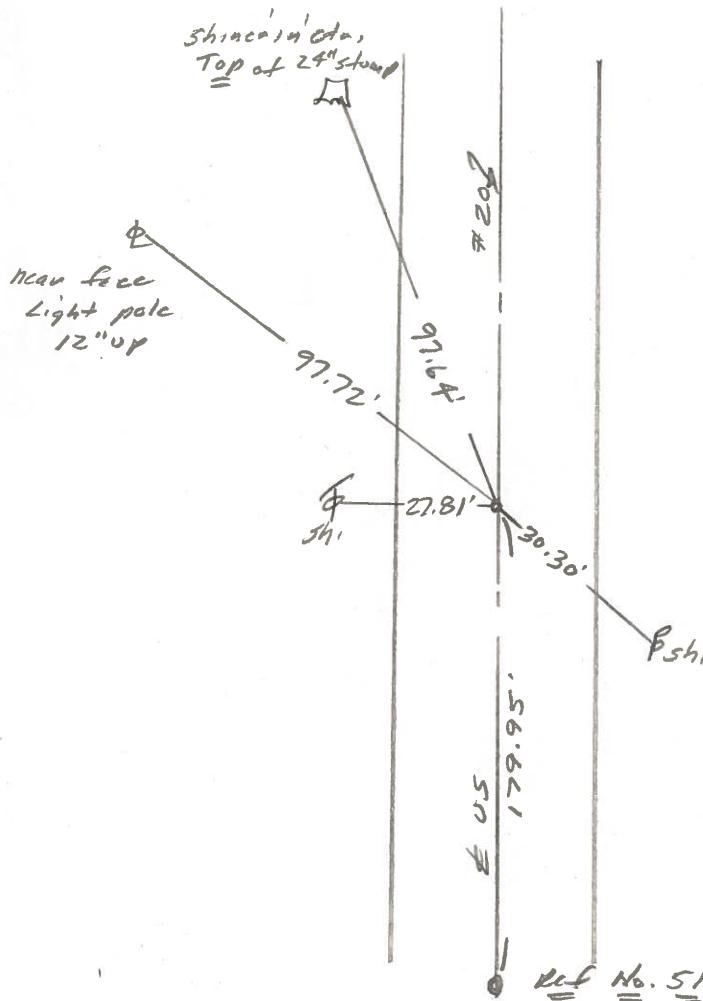
LEFT - \odot PAV'T. - RIGHT _____

TO _____ EDGE PAVEMENT

S.L.M. 1377 + 11



OK 8/27/86 IRS



O.D.O.T. DISTRICT 2 SURVEY OFFICE

Sht. 21 of

County Fulton US #20

Date 14 May 1979

Township Amberg

Weather Fair

Section 23

Temp. 65°

T_N, R_E

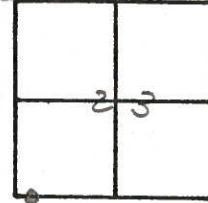
Personnel A. Stone

R. Michalek

P. Neuser

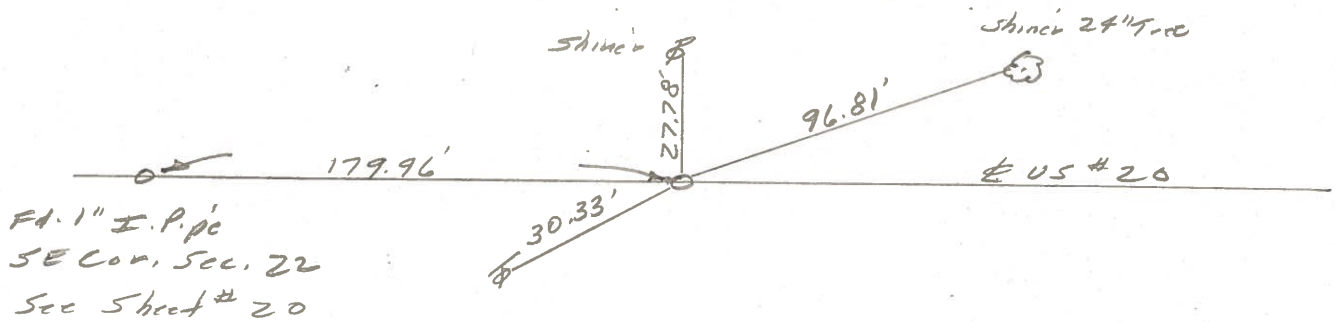
D. Curtis

D. Granata



REF. NO. 51A

179.96' E. of SW Cor. Sec. 23



Fd. PK Nail To Surface
13.1 to N, edge put.
11.3 to S, edge put.

PERSONNEL	TITLE	PERSONNEL	TITLE
TAMISIC			
Granata			
Vandy			
Boyle			

COUNTY Fulton DATE Aug, 29, 1972
 S. R. U.S. 20 WEATHER _____
 SEC. Ambay Twp TEMP. _____

DESCRIPTION _____ LEFT _____ CENTER LINE _____ RIGHT _____ JOB NO. _____

