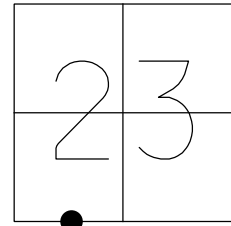


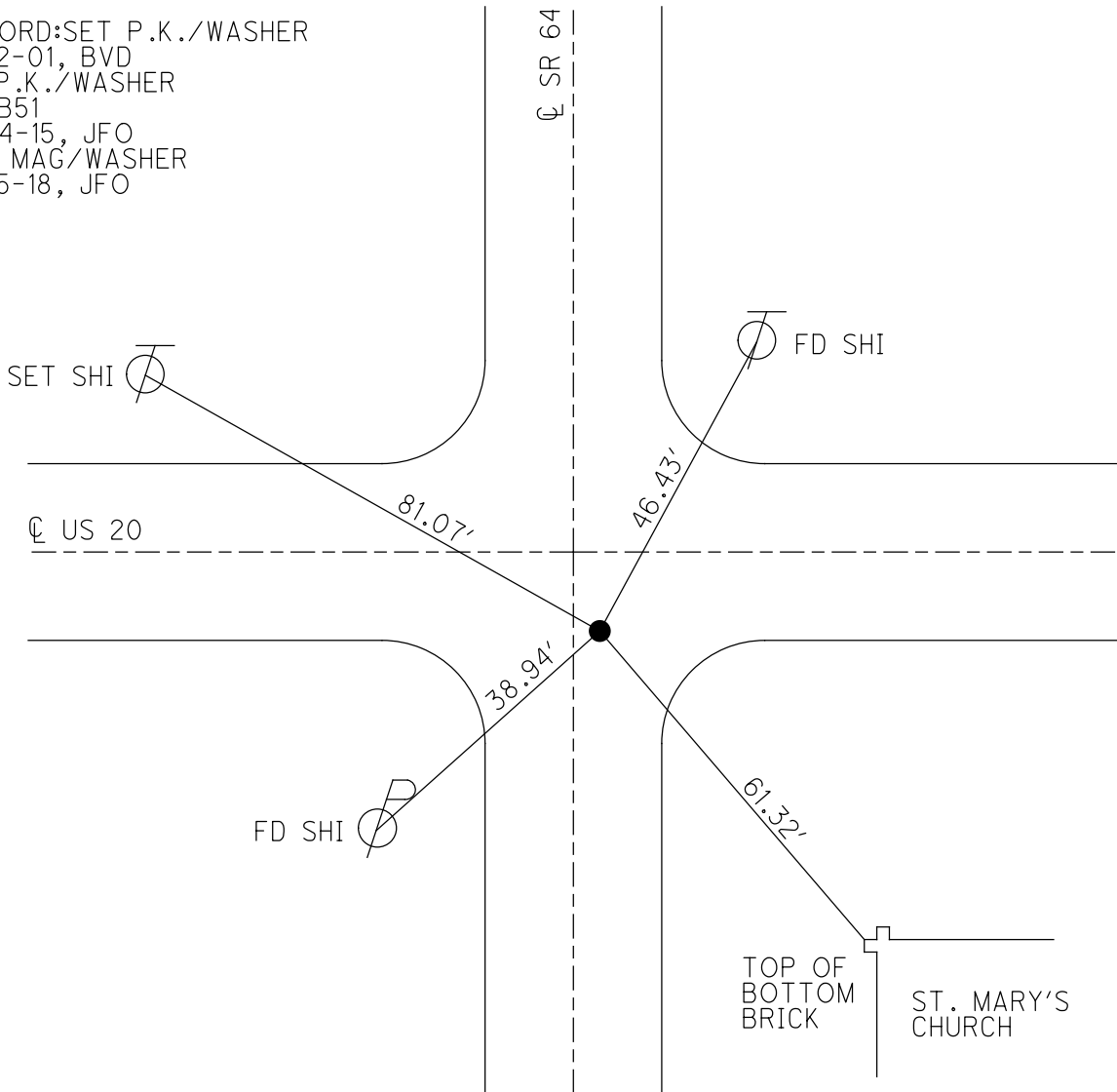
O.D.O.T. DISTRICT 2 SURVEY OFFICE (USE ONLY)

PERSONNEL _____ REFERENCE NO. 51B SHEET 22 OF 28
 NOTES RHOADES DATE 4/12/17 ROUTE US 20
 H.C. O'DONNELL WEATHER PT. CLOUDY COUNTY FULTON
 R.C. RHOADES TEMP. 46° TOWNSHIP AMBOY
 _____ SECTION 23
 _____ T 9 S R 4 E

TYPE MONUMENT _____ P.K./WASHER _____
 ON SURFACE - ~~BELOW~~ _____ ON _____
~~LEFT~~ - \odot PAV'T - RIGHT _____ 7.8' _____
 _____ TO _____ EDGE PAVEMENT _____
 S.L.M. _____ 1383+82.66 _____
 GRID: NORTHING: 733759.204 EASTING: 1582777.197



RECORD: SET P.K./WASHER
 6-22-01, BVD
 FD P.K./WASHER
 REFB51
 10-14-15, JFO
 SET MAG/WASHER
 6-25-18, JFO



O.D.O.T. DISTRICT 2 SURVEY OFFICE

PERSONNEL

REFERENCE NO. 51 B

SHEET 21 OF 27

NOTES KARGER

DATE 7/25/00

ROUTE US 20

H.C. CORDES

WEATHER SUNNY

COUNTY FULTON

R.C. KARGER

TEMP. 75°

TOWNSHIP AMBOY

SECTION 23

T 9 S R 4 E

TYPE MONUMENT SM.R.R.SPIKE

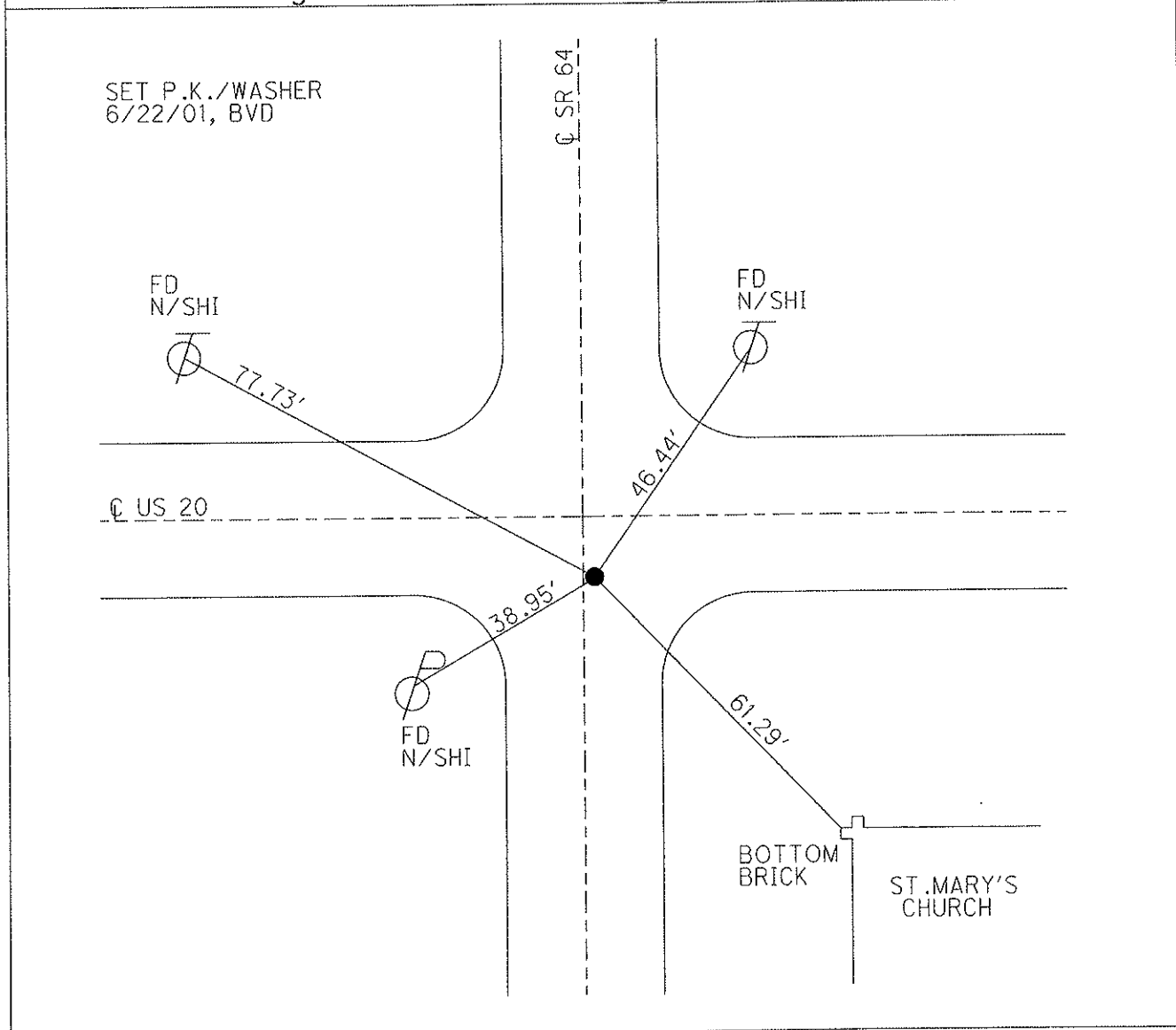
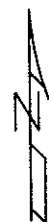
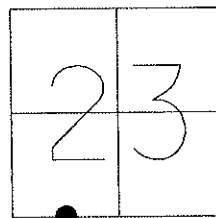
~~ON SURFACE~~ - BELOW 2"

~~LEFT~~ - C PAV'T - RIGHT 7.8'

TO EDGE PAVEMENT

S.L.M. 1391+90 (1' E. C SR 64)

Grid: Northing: _____ Easting: _____



O.D.O.T. DISTRICT 2 SURVEY OFFICE

PERSONNEL

REFERENCE NO. 51-B

SHEET 22 OF 26

NOTES Karger

H.C. Cordes

R.C. Karger

DATE 7-25-00

WEATHER Sunny

TEMP. 75° F

ROUTE US-20

COUNTY Fulton

TOWNSHIP Amboy

SECTION 23

T 9 S R 4 E

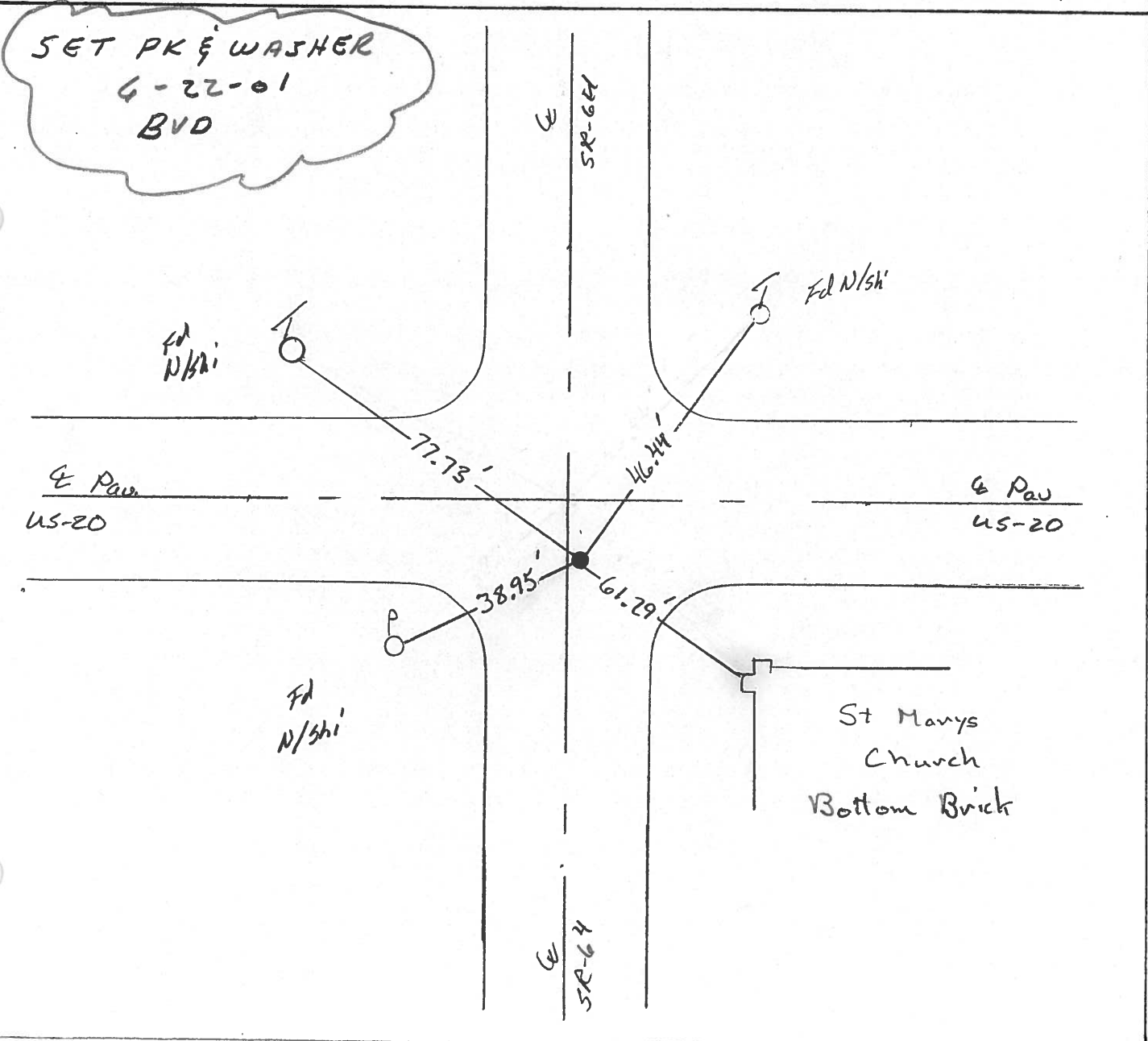
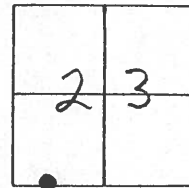
TYPE MONUMENT Small RR spk. Shank

~~ON SURFACE~~ - (BELOW) 2" Deep

~~LEFT HAND PAVT.~~ - (RIGHT) 7.8' Rt.

- TO - EDGE PAVEMENT (1' E. & SR-64)

S.L.M. 1391+90



O.D.O.T. DISTRICT 2 SURVEY OFFICE

PERSONNEL _____

REFERENCE NO. 51-B

SHEET 21 OF _____

NOTES 1. Stone

H.C. D. Curtis

R.C. J. Housholder

DATE 2 May 86

WEATHER Cool

TEMP. 40°

ROUTE US #20

COUNTY Fulton

TOWNSHIP Amboy

SECTION 23

T. _____ R. _____

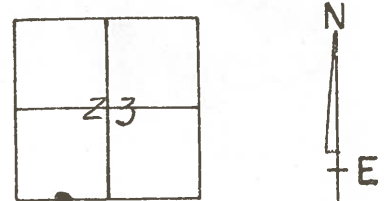
TYPE MONUMENT Small RR Spk.

ON SURFACE - BELOW 2" deep

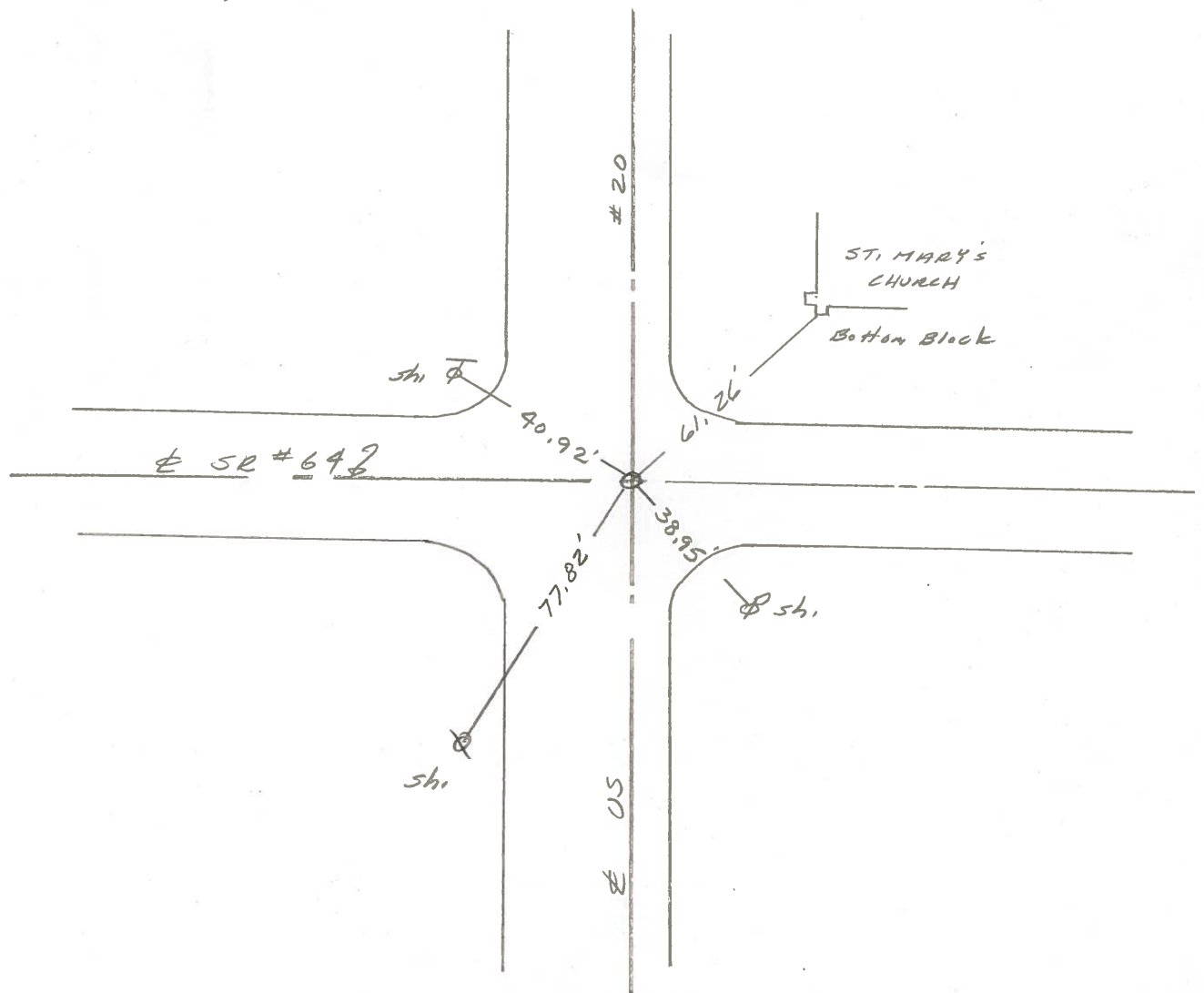
LEFT - ☉ PAV'T. - RIGHT _____

TO _____ EDGE PAVEMENT

S.L.M. _____



OK 8/27/86 IRS



County Fulton US # 20

Date 14 May 79

Township Ambony

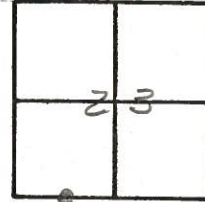
Weather Fair

Section 23

Temp. 65°

T N, R E

Personnel I. Stone



R. Michalak

P. Neuser

D. Curtis

D. Granata

REF. NO. 51-B

