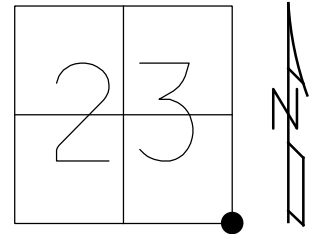


O.D.O.T. DISTRICT 2 SURVEY OFFICE (USE ONLY)

PERSONNEL _____ REFERENCE NO. 53A SHEET 25 OF 28
 NOTES RHOADES DATE 4/12/17 ROUTE US 20
 H.C. O'DONNELL WEATHER PT. CLOUDY COUNTY FULTON
 R.C. HELDMAN TEMP. 46° TOWNSHIP AMBOY
 _____ SECTION 23
 _____ T 9 S R 4 E

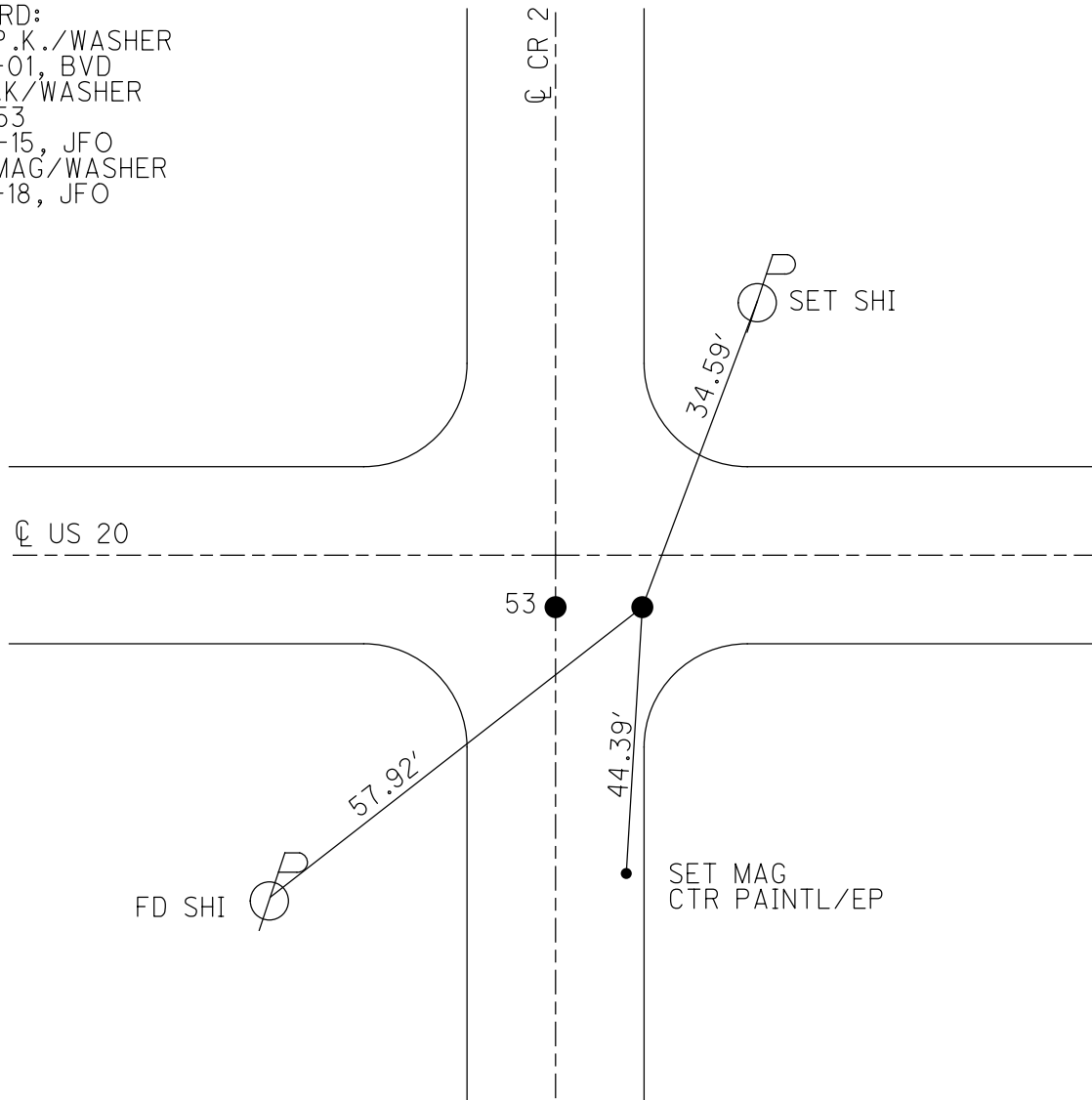
TYPE MONUMENT _____ P.K./WASHER _____
 ON SURFACE - ~~BELOW~~ _____ ON _____
~~LEFT - C~~ PAV'T - RIGHT _____ 5.3' _____
 _____ TO _____ EDGE PAVEMENT
 S.L.M. _____ 1421+17.53 _____

GRID: NORTHING: 733666.158 EASTING: 1586510.859



53 T 53A = 20.01'

RECORD:
 SET P.K./WASHER
 6-22-01, BVD
 FD P.K/WASHER
 REFA53
 10-14-15, JFO
 SET MAG/WASHER
 6-25-18, JFO



O.D.O.T. DISTRICT 2 SURVEY OFFICE

PERSONNEL _____

REFERENCE NO. 53 A

SHEET 24 OF 27

NOTES KARGER

DATE 7/25/00

ROUTE US 20

H.C. CORDES

WEATHER SUNNY

COUNTY FULTON

R.C. KARGER

TEMP. 76°

TOWNSHIP AMBOY

SECTION 23,24,25,26

T 9 S R 4 E

TYPE MONUMENT SHANK

ON SURFACE - ~~BELOW~~ ON

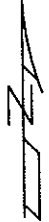
~~LEFT~~ - C PAV'T - RIGHT 5.3'

TO EDGE PAVEMENT

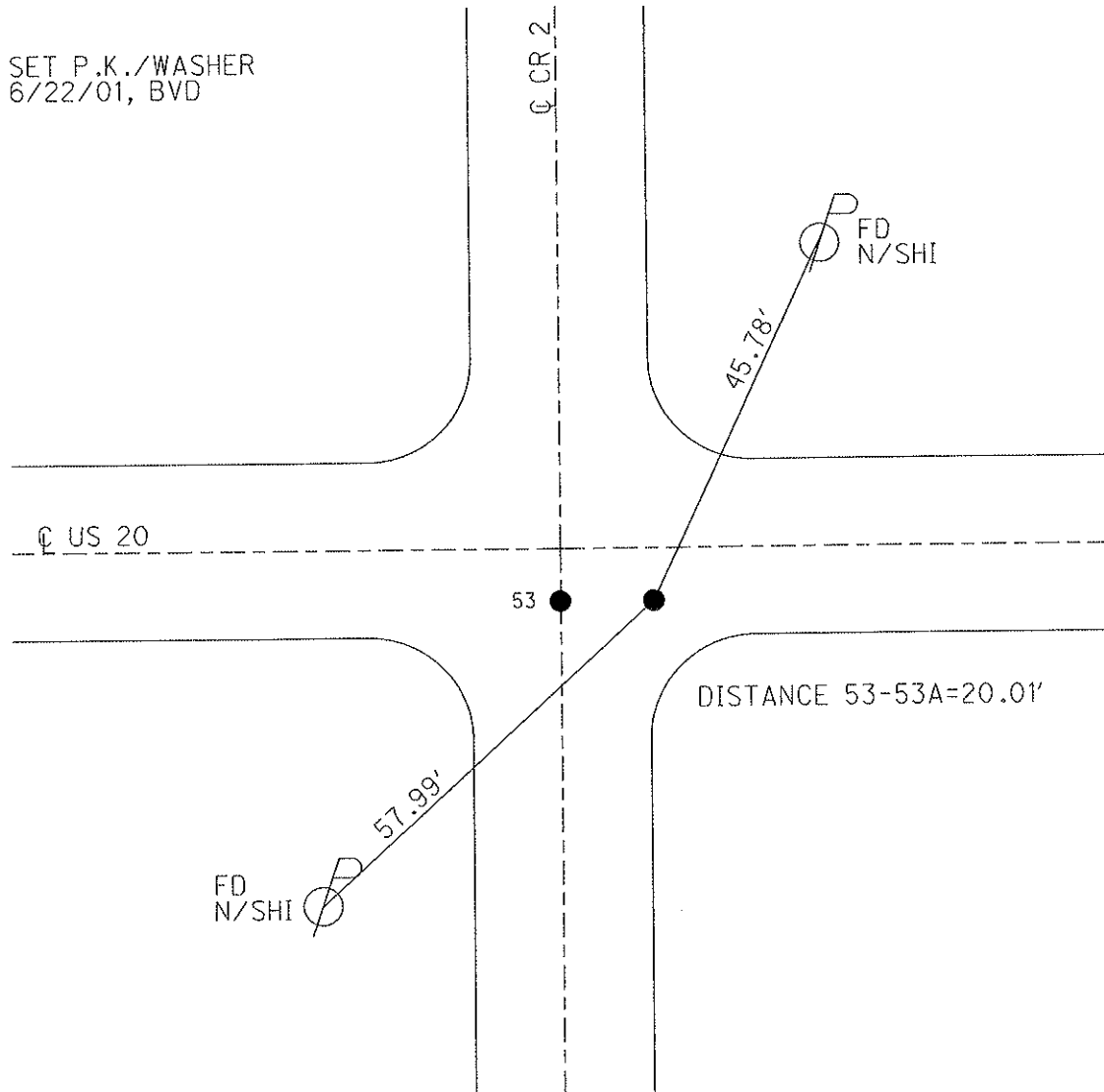
S.L.M. 1429+54

Grid: Northing: _____ Easting: _____

| | |
|----|----|
| 23 | 24 |
| 26 | 25 |



SET P.K./WASHER
6/22/01, BVD



O.D.O.T. DISTRICT 2 SURVEY OFFICE

PERSONNEL

REFERENCE NO. 53

SHEET 24 OF 26

NOTES Karger

H.C. Condes

R.C. Karger

DATE 7-25-00

WEATHER Sunny

TEMP. 76°F

ROUTE US 20

COUNTY FULTON

TOWNSHIP Amboy

SECTION 23-24-25-26

T 9 S R 4 E

TYPE MONUMENT RR Spk. (Shank)

~~ON SURFACE~~ - (BELOW) (A) 2" Deep (B) Surface

~~ON SURFACE~~ - (RIGHT) (A) 5.3' Rt.

TO EDGE PAVEMENT

S.L.M. (A) 1429+34 (B) 1429+54

| | |
|----|----|
| 23 | 24 |
| 26 | 25 |

