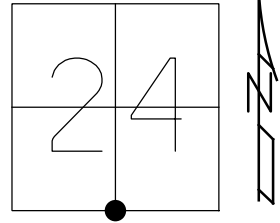


O.D.O.T. DISTRICT 2 SURVEY OFFICE (USE ONLY)

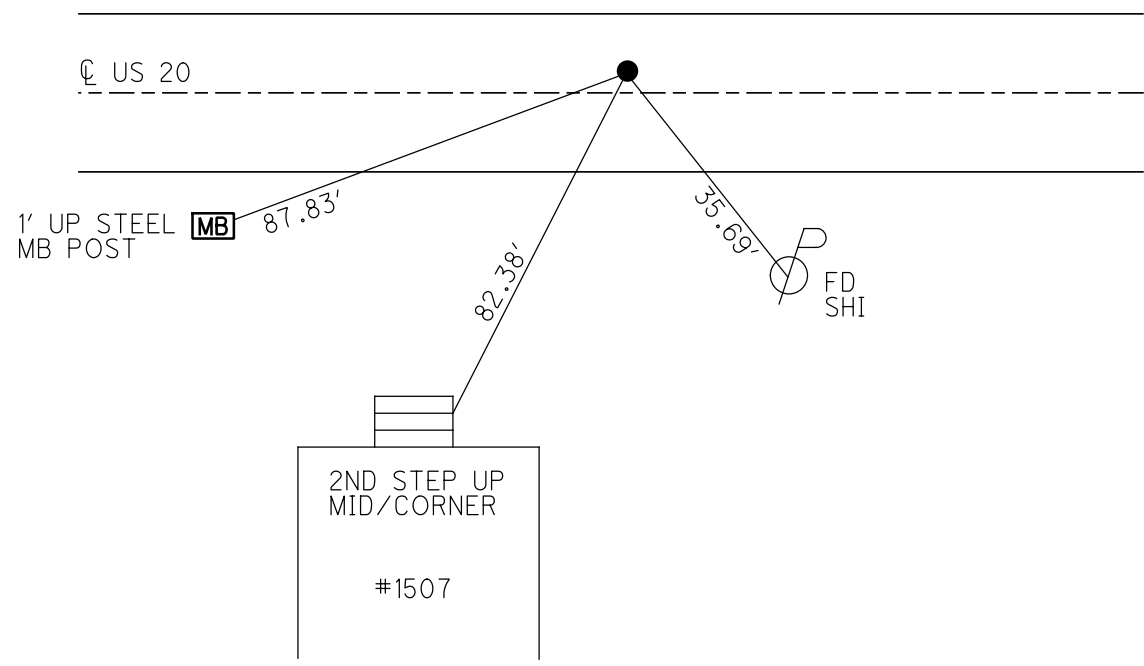
PERSONNEL \_\_\_\_\_ REFERENCE NO. 54 SHEET 26 OF 28  
 NOTES AUBLE DATE 12/21/23 ROUTE SR 20  
 H.C. NIESE WEATHER CLOUDY COUNTY FULTON  
 R.C. ASTON TEMP. 45° TOWNSHIP AMBOY  
 DWG BY RHOADES PID PAVING TRAIN SECTION 24  
 T 9 N R 4 E

TYPE MONUMENT MAG/WASHER  
 ON SURFACE - ~~BELOW~~ ON  
 OFFSET 8.3' TO LT EDGE PAVEMENT LT : ~~RT~~  
 STATION: 1447+46.02  
 HORZ.DATUM: NAD83 2011 GEOID: NAVD88 2018  
 GRID: NORTHING: 733611.172 EASTING: 1589139.530



RECORD:  
 SET P.K./WASHER  
 6-22-01, BVD  
 FD P.K/WASHER  
 REF54  
 10-14-15, JFO  
 SET MAG/WASHER  
 6-25-18, JFO  
 FD MAG/WASHER  
 FUL20REF54  
 6/9/23, JAM  
 12/21/23, DSA

FULTON LPD:  
 N: 390848.518  
 E: 235463.606

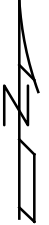
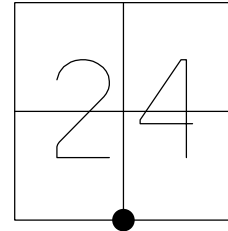


O.D.O.T. DISTRICT 2 SURVEY OFFICE (USE ONLY)

PERSONNEL \_\_\_\_\_ REFERENCE NO. 54 SHEET 26 OF 28  
 NOTES RHOADES DATE 4/12/17 ROUTE US 20  
 H.C. O'DONNELL WEATHER PT. CLOUDY COUNTY FULTON  
 R.C. HELDMAN TEMP. 46° TOWNSHIP AMBOY  
 \_\_\_\_\_ SECTION 24  
 \_\_\_\_\_ T 9 S R 4 E

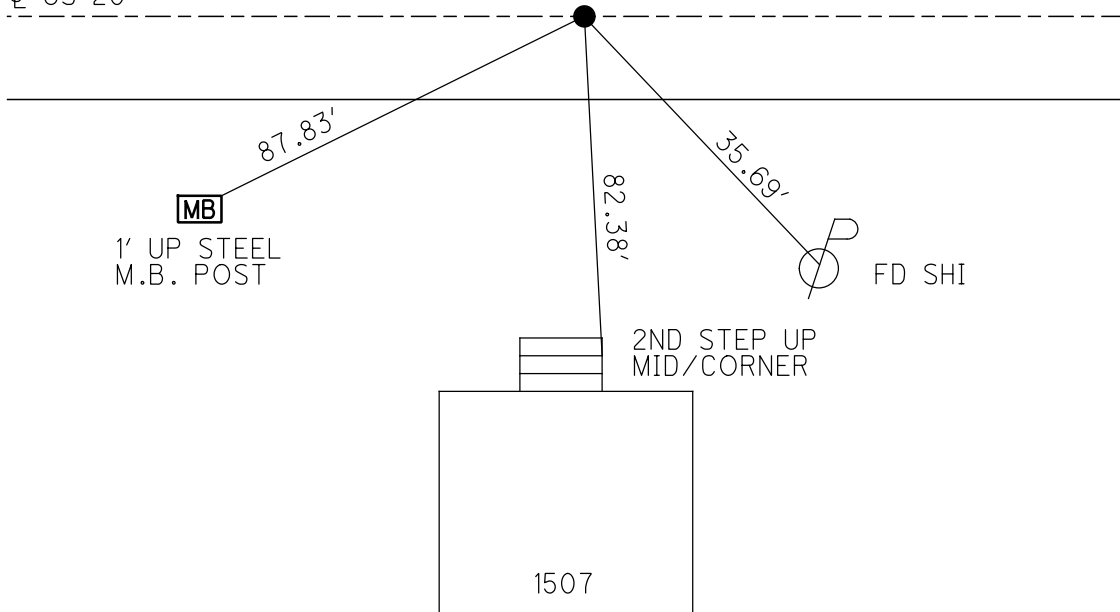
TYPE MONUMENT \_\_\_\_\_ SM. R.R. SPIKE  
~~ON SURFACE~~ - BELOW \_\_\_\_\_ 3.5"  
 LEFT - ☉ PAV'T - ~~RIGHT~~ \_\_\_\_\_ 3.7'  
 \_\_\_\_\_ 8.3' TO LT EDGE PAVEMENT  
 S.L.M. \_\_\_\_\_ 1447+46.02

GRID: NORTHING: 733611.196 EASTING: 1589139.573



RECORD:  
 SET P.K./WASHER  
 6-22-01, BVD  
 FD P.K/WASHER  
 REF54  
 10-14-15, JFO  
 SET MAG/WASHER  
 6-25-18, JFO

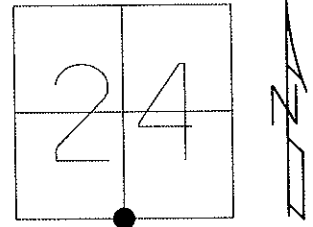
☉ US 20



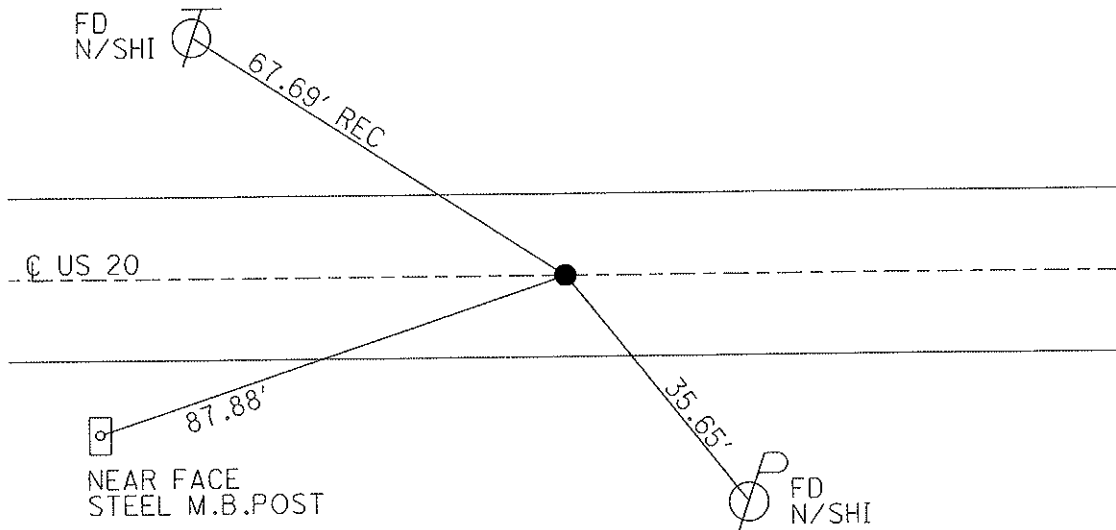
O.D.O.T. DISTRICT 2 SURVEY OFFICE

PERSONNEL	REFERENCE NO. <u>54</u>	SHEET <u>25</u> OF <u>27</u>
NOTES <u>KARGER</u>	DATE <u>7/25/00</u>	ROUTE <u>US 20</u>
H.C. <u>CORDES</u>	WEATHER <u>SUNNY</u>	COUNTY <u>FULTON</u>
R.C. <u>KARGER</u>	TEMP. <u>76°</u>	TOWNSHIP <u>AMBOY</u>
		SECTION <u>24</u>
		T <u>9</u> S R <u>4</u> E

TYPE MONUMENT R.R.SPIKE  
~~ON SURFACE~~ - BELOW 2"  
 LEFT - C PAV'T - ~~RIGHT~~ 3.7'  
8.3' TO LT EDGE PAVEMENT  
 S.L.M. 1456+00  
 Grid: Northing: \_\_\_\_\_ Easting: \_\_\_\_\_



SET P.K./WASHER  
 6/22/01, BVD



# O.D.O.T. DISTRICT 2 SURVEY OFFICE

PERSONNEL \_\_\_\_\_

REFERENCE NO. 54

SHEET 25 OF 26

NOTES Karger

H.C. Condes

R.C. Karger

DATE 7-25-00

WEATHER Sunny

TEMP. 76°F

ROUTE US-20

COUNTY Fulton

TOWNSHIP Amboy

SECTION 24

T9 S R 4 E

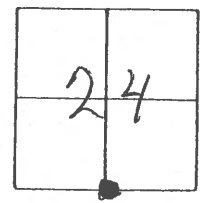
TYPE MONUMENT RR Spk.

~~ON SURFACE~~ BELOW 2" Deep

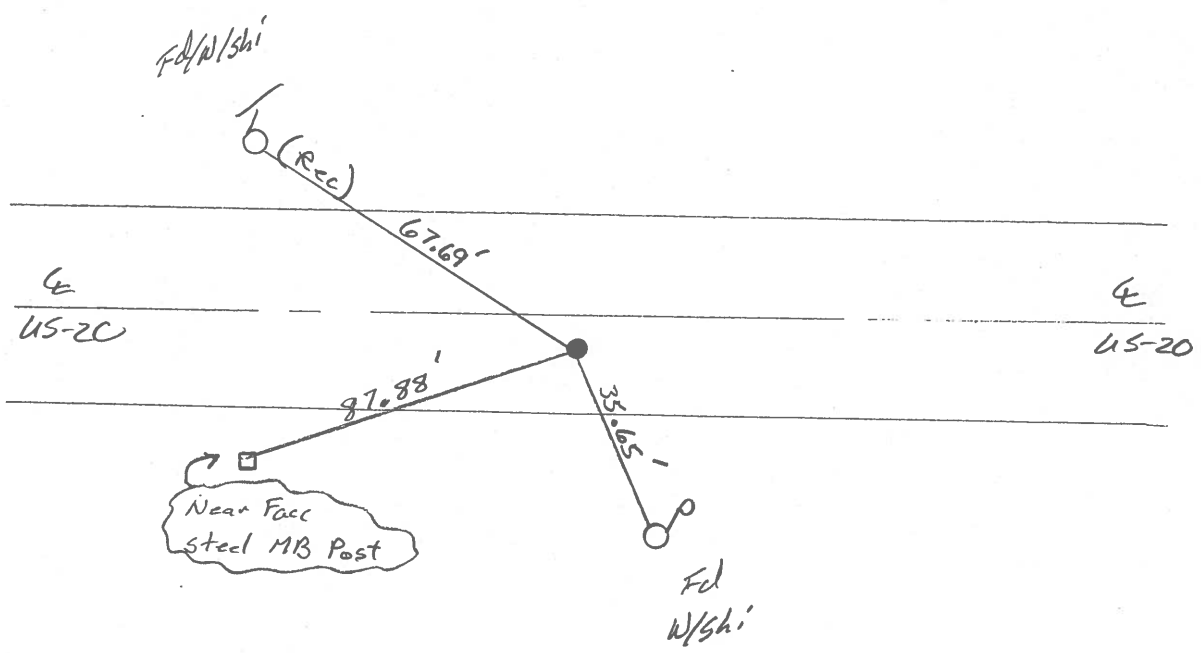
LEFT ~~RIGHT~~ 3.7' E

8.3' TO Lt. EDGE PAVEMENT

S.L.M. 1456+00



SET PK& WASHER  
 6-22-01  
 BVD



# O.D.O.T. DISTRICT 2 SURVEY OFFICE

PERSONNEL \_\_\_\_\_

REFERENCE NO. 54

SHEET 24 OF \_\_\_\_\_

NOTES 1. Stone

H.C. D. Curtis

R.C. J. Hooscholder

DATE 2 May 86

WEATHER Cool

TEMP. 49°

ROUTE US # 20

COUNTY Fulton

TOWNSHIP Amboyn

SECTION 24

T \_\_\_\_\_ R \_\_\_\_\_

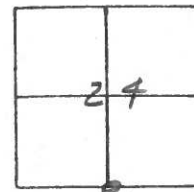
TYPE MONUMENT RR Spk.

ON SURFACE - BELOW 2" deep

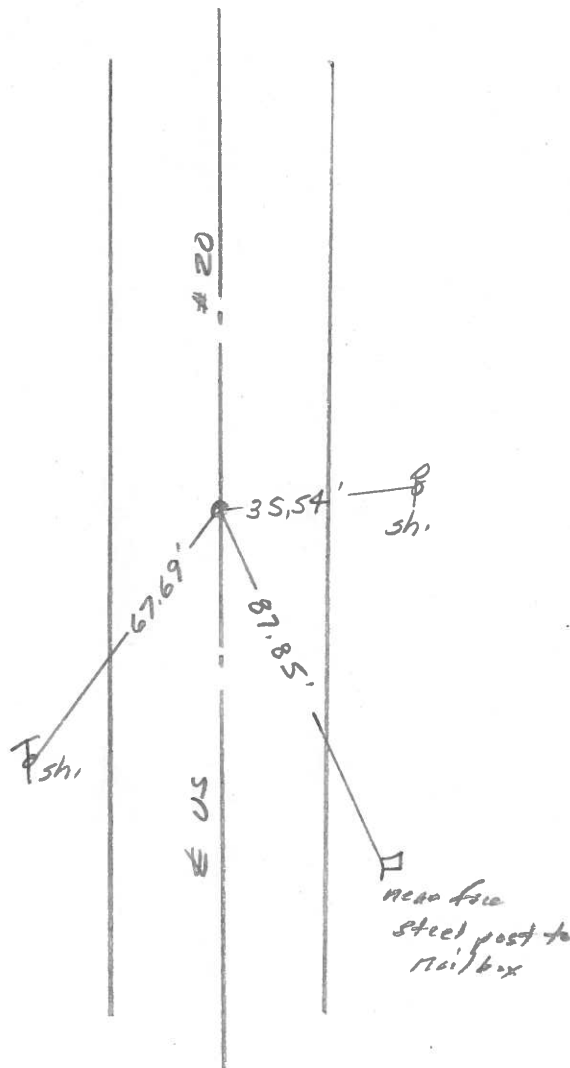
LEFT -  $\odot$  PAV'T. - RIGHT \_\_\_\_\_

TO \_\_\_\_\_ EDGE PAVEMENT

S.L.M. 1454+29



OK 8/27/86 IRS



O.D.O.T. DISTRICT 2 SURVEY OFFICE

Sht. 25 of

County Fulton US # 20

Date 14 May 1979

Township Amboy

Weather Fair

Section 24

Temp. 65°

T. N, R. E

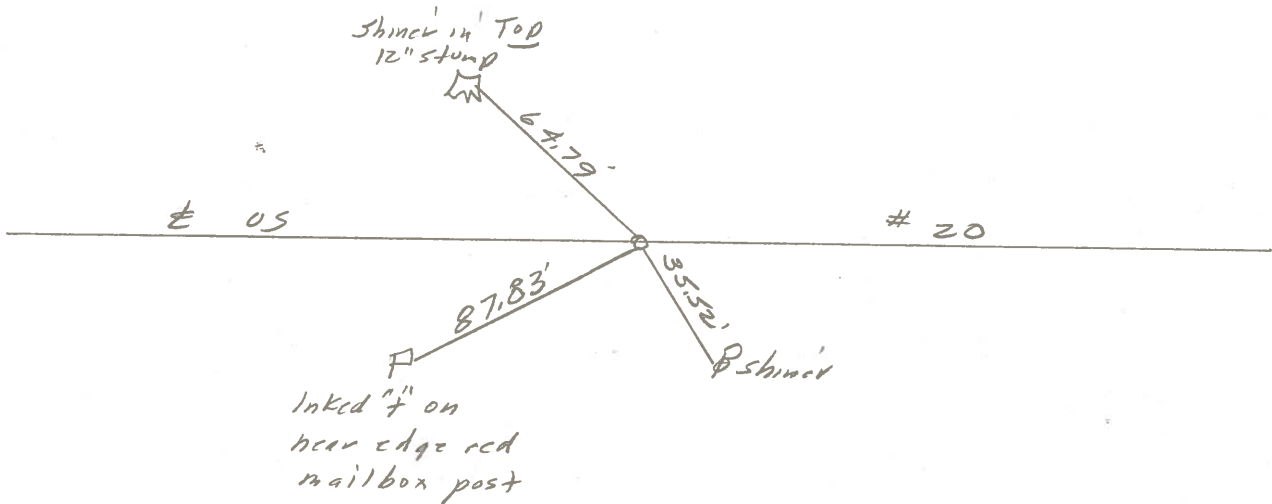
Personnel 1. Stone  
R. Michalak  
P. Neuser  
D. Curtis  
D. Franata



REF. NO. 54

S. 1/4 Co., Sec. 24

1/2 mile E. of Co. Rd. #2



Fd. RR Spk. To Surface  
 7.9' to N. edge put  
 16.6' to S. edge put.

PERSONNEL	TITLE	PERSONNEL	TITLE
<u>Tomsic</u>			
<u>Neuser</u>			
<u>Granata</u>			

COUNTY Fulton

DATE MAR. 20, 1975

S. R. U.S. 20

WEATHER

SEC. Amboy P.

TEMP.

DESCRIPTION

LEFT

CENTER LINE

RIGHT

JOB NO.

