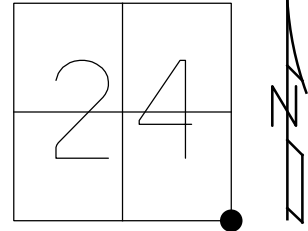


O.D.O.T. DISTRICT 2 SURVEY OFFICE (USE ONLY)

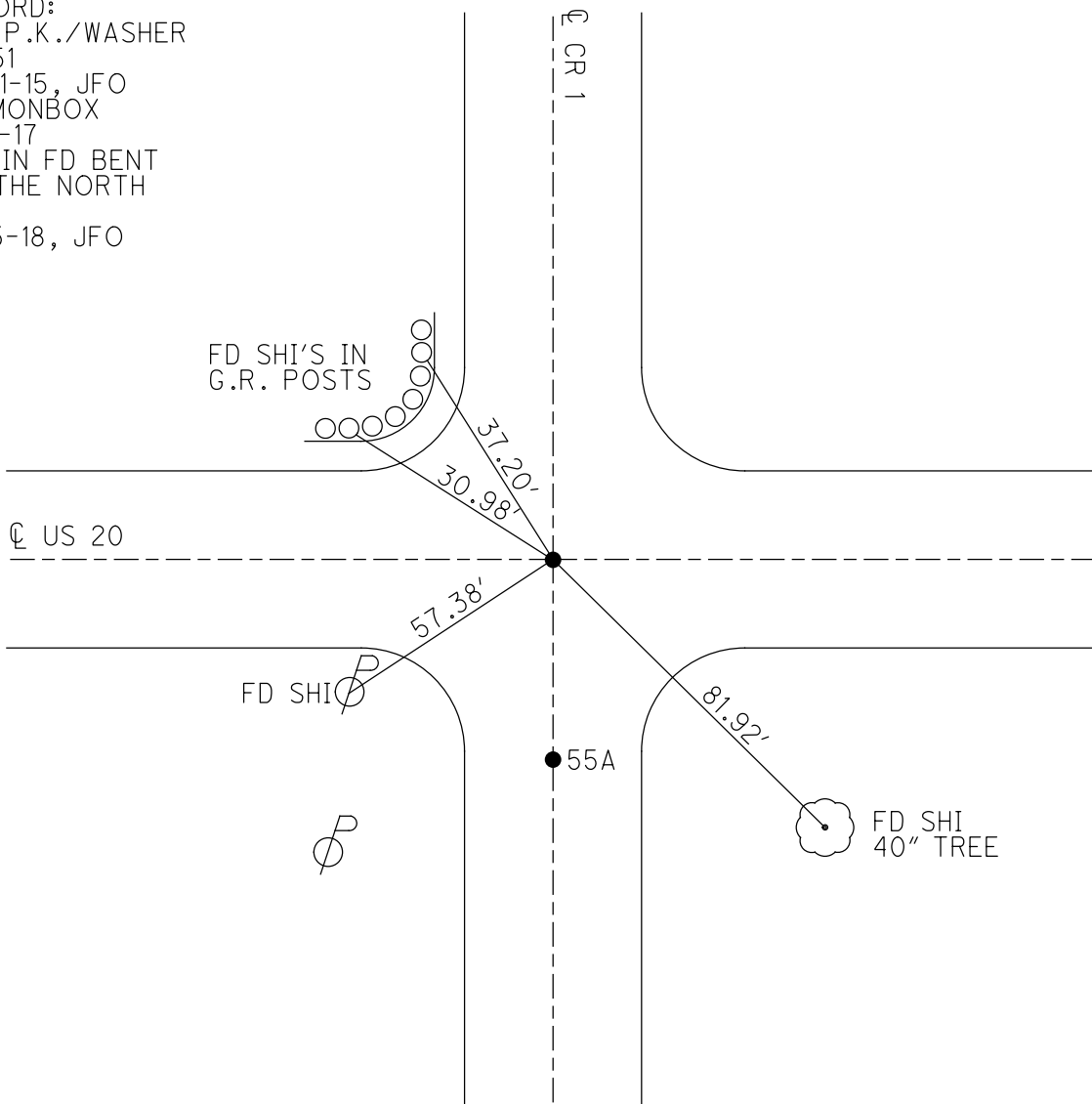
PERSONNEL _____ REFERENCE NO. 55 SHEET 27 OF 28
 NOTES HUSS _____ DATE 7/24/00 ROUTE US 20
 H.C. CORDES _____ WEATHER CLOUDY COUNTY FULTON
 R.C. KARGER _____ TEMP. 72° TOWNSHIP AMBOY
 _____ SECTION 24
 _____ T 9 S R 4 E

TYPE MONUMENT _____ P.K./WASHER _____
 ON SURFACE - ~~BELOW~~ _____ ON _____
~~LEFT~~ - \odot PAV'T - ~~RIGHT~~ _____ ON _____
 _____ TO _____ EDGE PAVEMENT
 S.L.M. 1473+91.53
 GRID: NORTHING: - _____ EASTING: - _____



55 TO 55A = 57.51'

RECORD:
 SET P.K./WASHER
 REF51
 10-21-15, JFO
 FD MONBOX
 4-12-17
 1" IPIN FD BENT
 TO THE NORTH
 REF1
 6-25-18, JFO



O.D.O.T. DISTRICT 2 SURVEY OFFICE

PERSONNEL _____

REFERENCE NO. 55

SHEET 26 OF 27

NOTES HUSS

DATE 7/24/00

ROUTE US 20

H.C. CORDES

WEATHER CLOUDY

COUNTY FULTON

R.C. KARGER

TEMP. 72°

TOWNSHIP AMBOY

SECTION 24

T 9 S R 4 E

TYPE MONUMENT P.K./WASHER

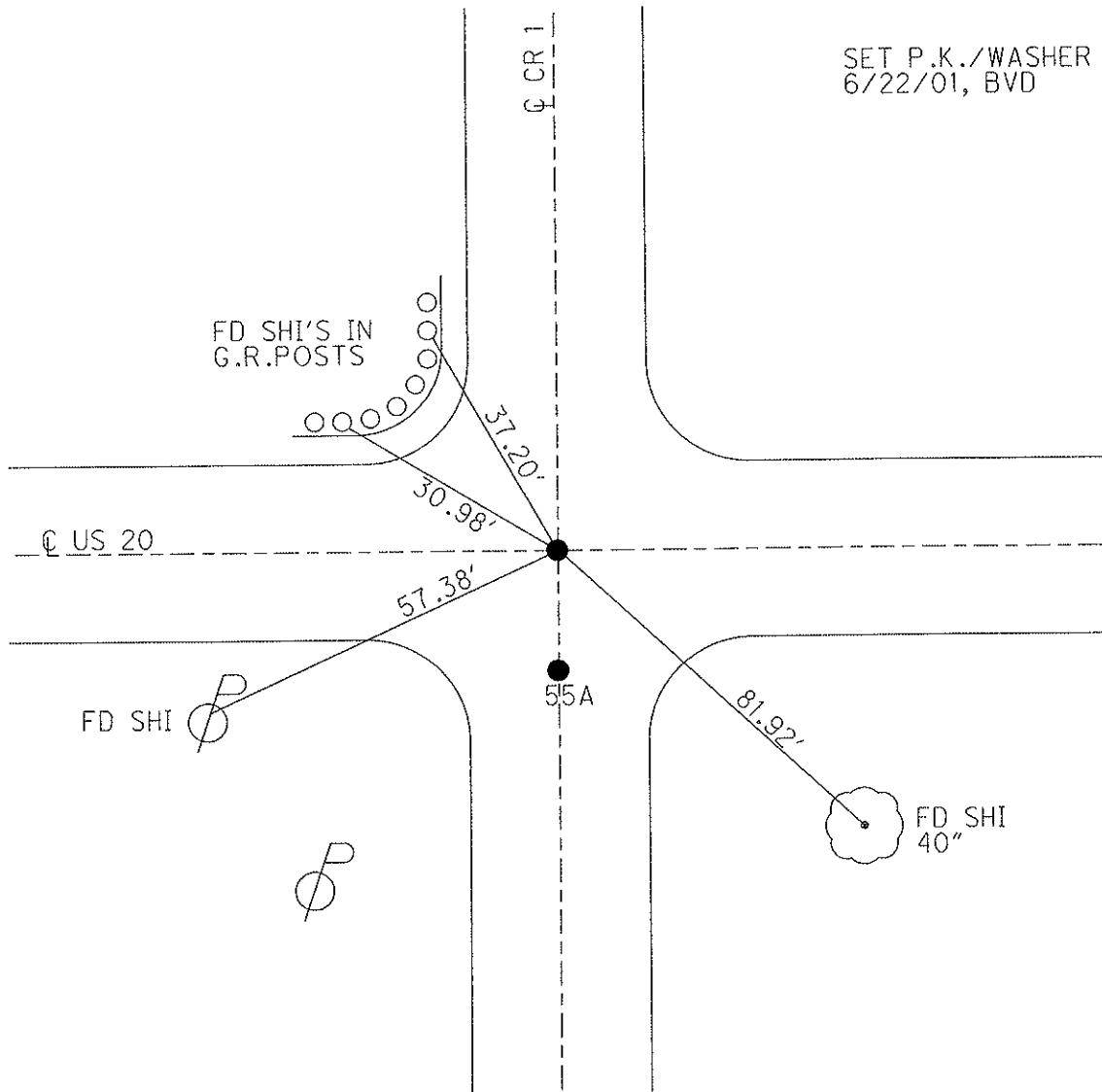
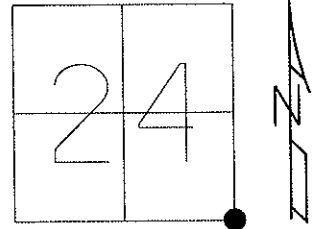
ON SURFACE - ~~BELOW~~ ON

LEFT - C PAV'T - RIGHT _____

_____ TO _____ EDGE PAVEMENT

S.L.M. 1472+59

Grid: Northing: _____ Easting: _____



SET P.K./WASHER
6/22/01, BVD

O.D.O.T. DISTRICT 2 SURVEY OFFICE

PERSONNEL _____ REFERENCE NO. 55 SHEET 26 OF 26

NOTES Huss

H.C. CORDES

R.C. KARGER

DATE 7-24-00

WEATHER cloudy

TEMP. +72°F

ROUTE US 20

COUNTY Fulton

TOWNSHIP Amboy

SECTION 24

T9 S R 4 E

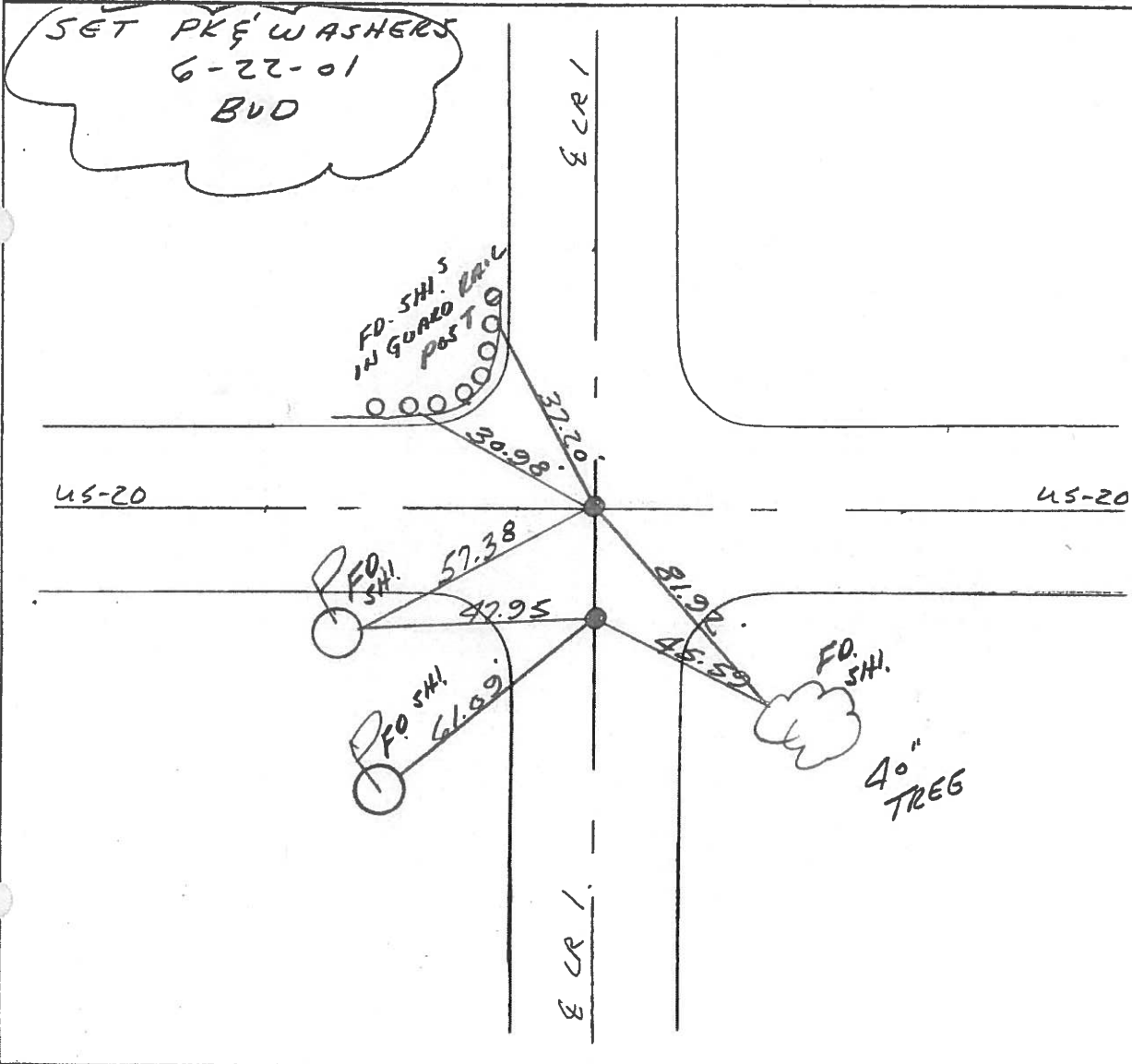
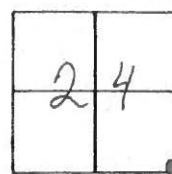
TYPE MONUMENT PK& WASHERS

ON SURFACE - BELOW YES

LEFT- & PAV'T. - RIGHT _____

TO EDGE PAVEMENT

S.L.M. 7389+69.6 1472+59



O.D.O.T. DISTRICT 2 SURVEY OFFICE

Sht. 26 of

County Fulton US#20

Date 14 May 1979

Township Amboy

Weather Fair

Section 24

Temp. 65°

T N, R E

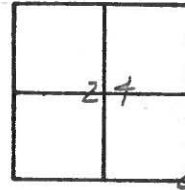
Personnel I. Stone

R. Mickalak

P. Newer

D. Curtis

D. Granata



REF. NO. 55

SE Cor. Sec. 24

