

FED. RD. DIST. NO.	STATE	PROJECT	FISCAL YEAR
10	OHIO		1944

FULTON COUNTY
S.H.300 SEC. SWANTON (Pt.)

STATE OF OHIO DEPARTMENT OF HIGHWAYS

SWANTON-METAMORA ROAD S.H. 300 SEC. SWANTON (PT.) FULTON COUNTY VILLAGE OF SWANTON

CONVENTIONAL SIGNS

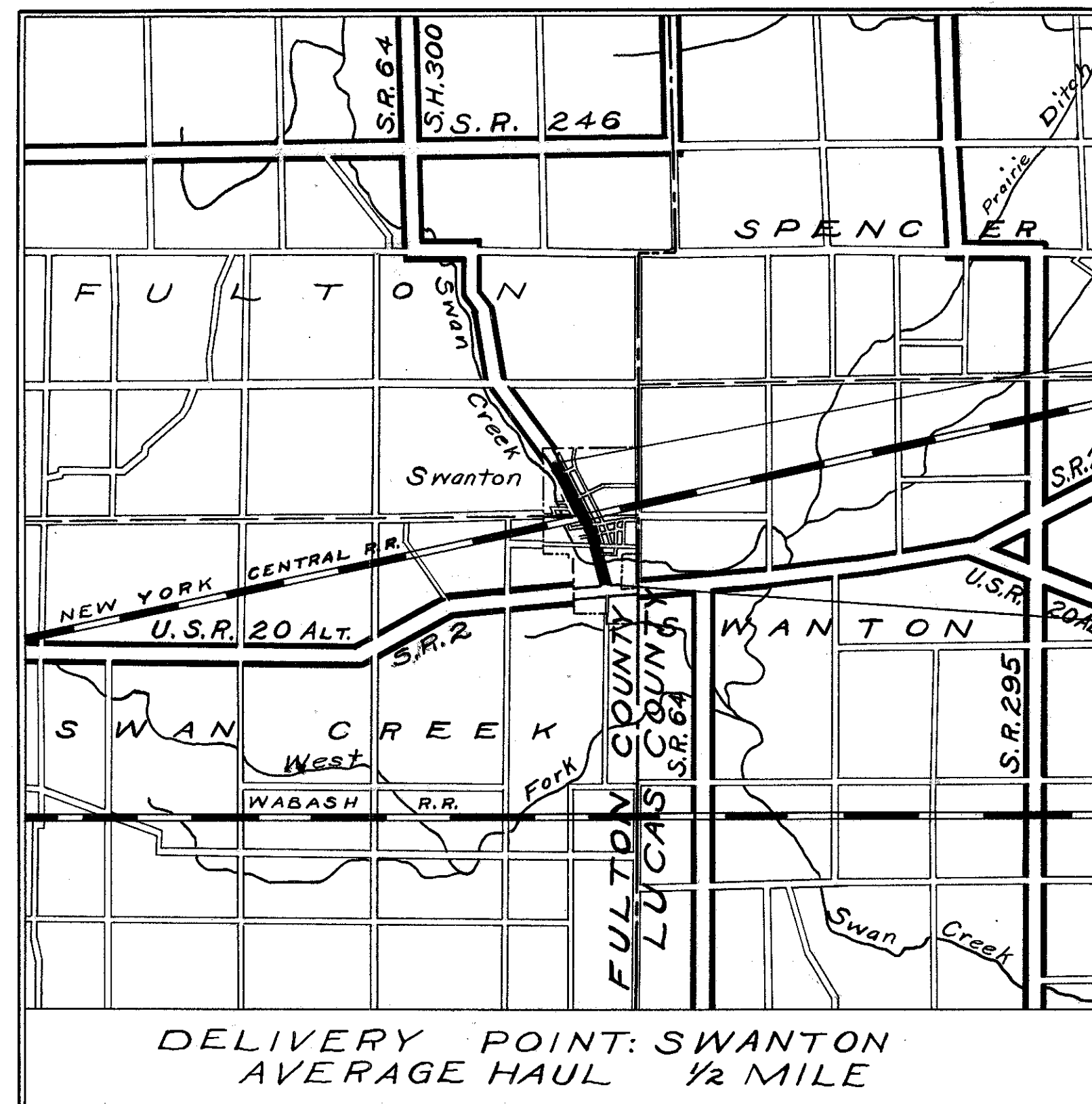
COUNTY LINE	-----
TOWNSHIP LINE	-----
SECTION LINE	-----
CORPORATION LINE	-----
PROPERTY LINE	-----
FENCE LINE	-x-x-x-
CENTER LINE	-----
STEAM RAILROAD	===== ===== =====
POLE LINE	-----
HEDGE	~~~~~
DRAIN PIPE (NEW)	-----
DRAIN PIPE (OLD)	-----
GUARD RAIL (NEW)	-----

INDEX OF SHEETS

TITLE SHEET	1
TYPICAL SECTIONS	2-3
GENERAL NOTES	3
PLAN & PROFILE	4-7
SUMMARIES	8
COMPUTATIONS	8
GENERAL SUMMARY	8

LINE DATA

Begin Project, Sec. Swanton (Pt.), Station 0+35
 End Project, Sec. Swanton (Pt.), Station 54+65
 Gross Length of Project = 5430 Lin. Ft.
 Deduction for Railroad, Sta. 29+92 to Sta. 30+48 = 56 Lin. Ft.
 Net Length of Project = 5374 Lin. Ft. or 1.017 Mile



LOCATION PLAN

SCALE OF MILES
 PORTION TO BE IMPROVED (thick black line)
 STATE HIGHWAYS (double line)
 OTHER ROADS (single line)

SCALES

PLAN 1" = 50'
 PROFILE-HORIZONTAL 1" = 50'
 PROFILE-VERTICAL 1" = 5'

The Standard Specifications of The State of Ohio, Department of Highways, including changes and Supplemental Specifications listed in the Proposal shall govern this improvement.
 I hereby approve these plans and declare that the making of this improvement will not require the closing to traffic of the highway, and that provisions for the maintenance and safety of traffic will be as set forth on the plans and estimates.

The right of way necessary for this improvement will be provided by The State of Ohio.

End Project Sta 54+65

Begin Project Sta 0+35

Approved *[Signature]*
 Date ~~4-14-44~~ Resident Division Deputy Director

Approved _____
 Date _____ Chief Engineer, Bureau of Maintenance

Approved _____
 Date _____ Chief Engineer, Bureau of Bridges and Railroad Crossings

Approved *[Signature]*
 Date ~~5-15-44~~ Chief Engineer, Bureau of Location and Right of Way

Approved *[Signature]*
 Date ~~5-15-44~~ First Assistant Director and Chief Engineer

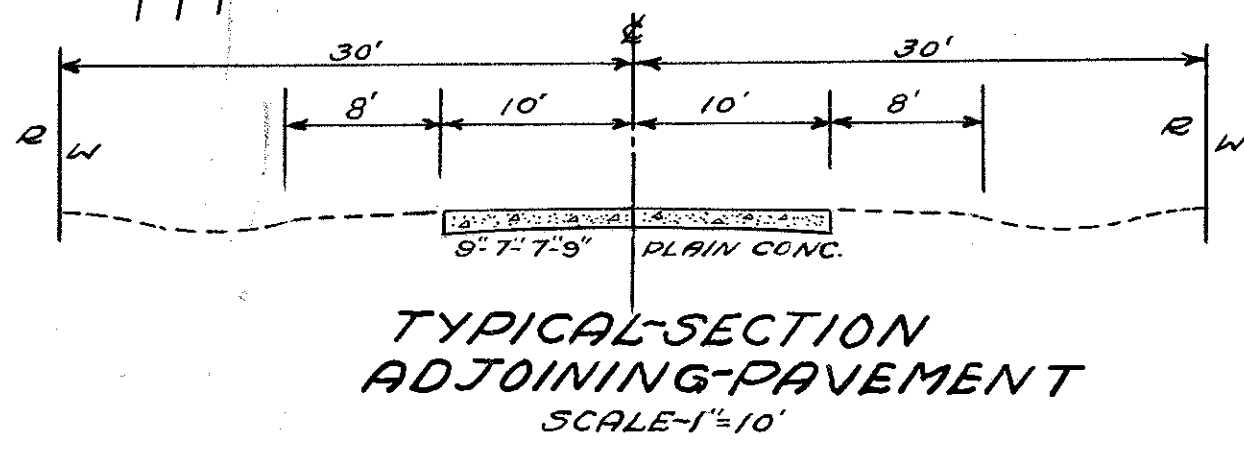
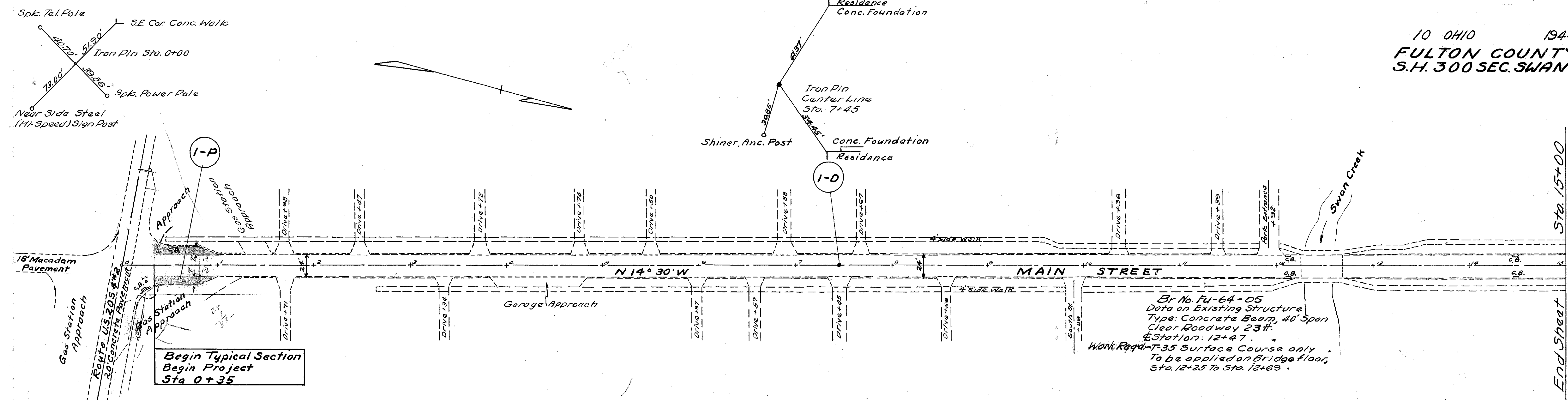
Approved *[Signature]*
 Date ~~5-16-44~~ Director of Highways

STANDARD DRAWINGS	
G-7.07	6-1-42

SUPPLEMENTAL SPECIFICATIONS	
NONE	

CONSTRUCTION BUREAU
 JUN 22 1955
 GROUND PHOTOLAB

FILE NO.	FULTON COUNTY, S.H. 300, SEC. SWANTON (Pt.)
DATE OF LETTING	_____, 194__
CONTRACT NO.	_____



Miscellaneous Construction "D"

Ref. No.	Station		Side	I-8 Adjust Iron Pin To grade Each	Remarks
	From	To			
I-D	7+45			1	Monument See Details sheet #7
Total				1	

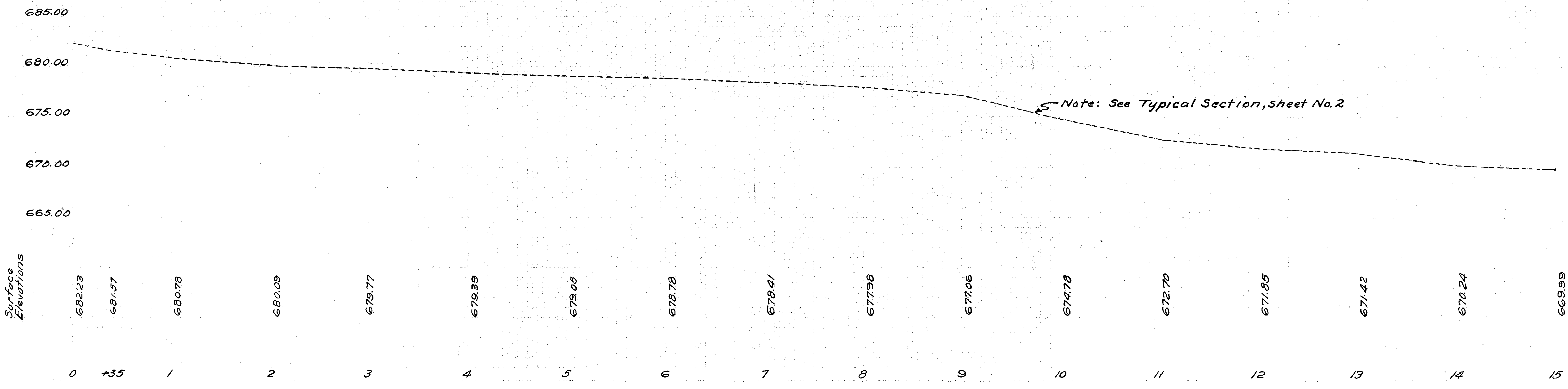
Extra Pavement "P"

Ref. No.	Station		Side	T-35 1 1/4" Surface Course Sq. Yds.	B-35 3/4" Minimum Leveling Course Sq. Yds.	T-30 Prime Coat Sq. Yds.	Remarks
	From	To					
I-P	0+35	1+02	Lt & Rt	98	98	98	
Total				98	98	98	

B.M. #1 S.W. Cor. Conc. Pump Island
 63' Rt of Sta. 0+31
 Elev. = 682.84

B.M. #2 @ Top S. Wall Steps
 30' Lt. Sta. 6+65
 Elev. = 680.86

B.M. #3 @ on Cor. E. Br. Rail
 17' Lt. Sta. 12+69
 Elev. = 672.03

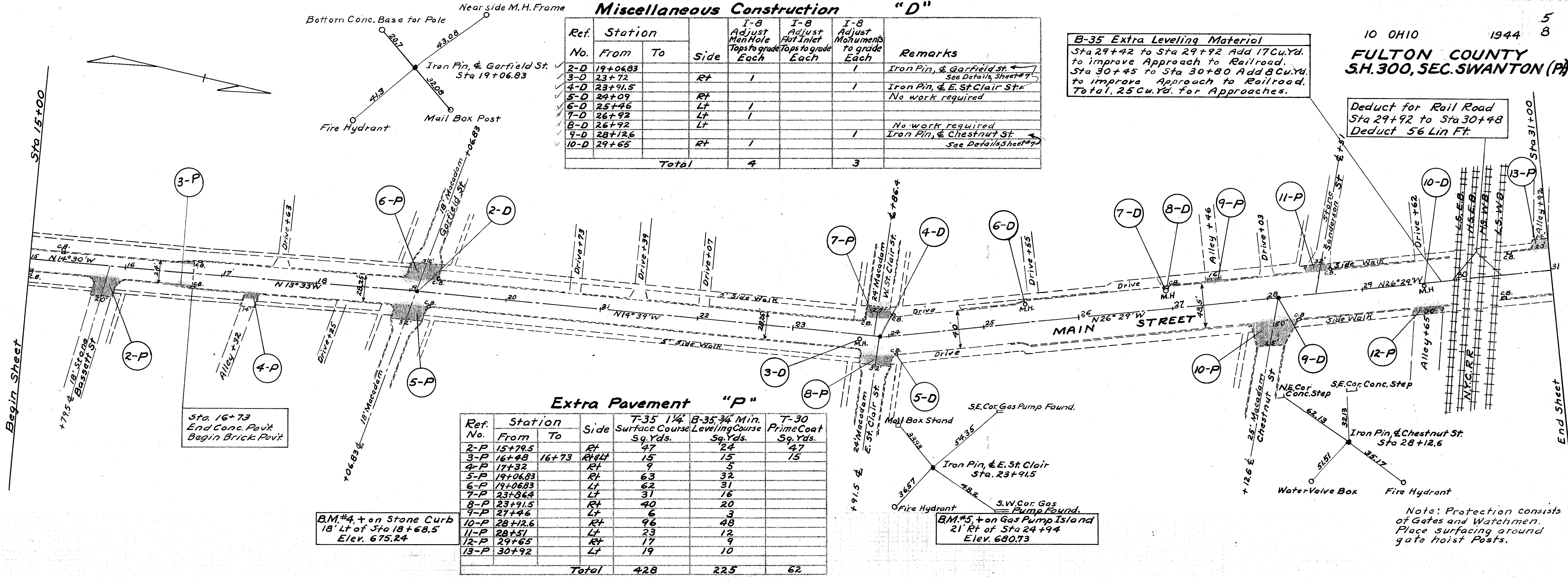


Miscellaneous Construction "D"

Ref. No.	Station	Side	I-B Adjust Man Hole Top to grade Each	I-B Adjust Flat Inlet Top to grade Each	I-B Adjust Markings to grade Each	Remarks
2-D	19+06.83				1	Iron Pin, & Garfield St. See Details, Sheet #7
3-D	23+72	Rt	1			
4-D	23+91.5				1	Iron Pin, & E. St. Clair St.
5-D	24+09	Rt				No work required
6-D	25+46	Lt	1			
7-D	26+92	Lt	1			
8-D	26+92	Lt				No work required
9-D	28+12.6				1	Iron Pin, & Chestnut St. See Details, Sheet #7
10-D	29+65	Rt	1			
Total			4		3	

B-35 Extra Leveling Material
 Sta 29+42 to Sta 29+92 Add 17 Cu. Yd. to improve Approach to Railroad.
 Sta 30+45 to Sta 30+80 Add 8 Cu. Yd. to improve Approach to Railroad.
 Total, 25 Cu. Yd. for Approaches.

Deduct for Rail Road
 Sta 29+92 to Sta 30+48
 Deduct 56 Lin. Ft.



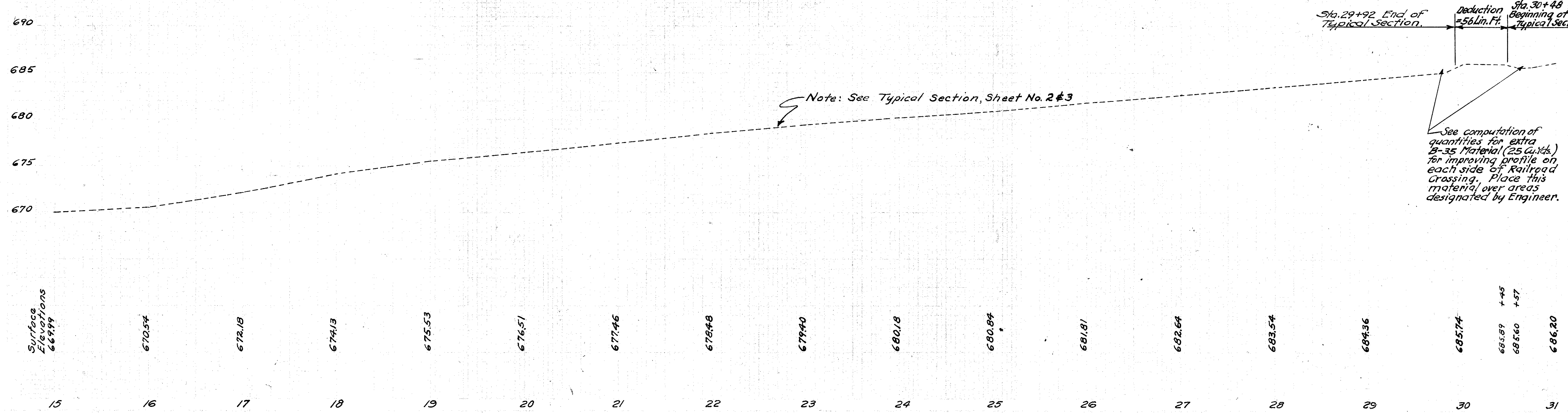
Extra Pavement "P"

Ref. No.	Station	Side	7-35 1/4" Surface Course Sq. Yds.	B-35 3/4" Min. Leveling Course Sq. Yds.	7-30 Prime Coat Sq. Yds.
2-P	15+79.5	Rt	47	24	47
3-P	16+48	Rt	15	15	15
4-P	17+32	Rt	9	5	9
5-P	19+06.83	Rt	63	32	63
6-P	19+06.83	Lt	62	31	62
7-P	23+86.4	Lt	31	16	31
8-P	23+91.5	Rt	40	20	40
9-P	27+46	Lt	6	3	6
10-P	28+12.6	Rt	96	48	96
11-P	28+51	Lt	23	12	23
12-P	29+65	Rt	17	9	17
13-P	30+92	Lt	19	10	19
Total			428	225	62

B.M. #4, + on Stone Curb
 18' Lt of Sta 18+68.5
 Elev. 675.24

B.M. #5, + on Gas Pump Island
 21' Rt of Sta 24+94
 Elev. 680.73

Note: Protection consists of Gates and Watchmen. Place surfacing around gate hoist Posts.



Sta. 29+92 End of Typical Section. Deduction = 56 Lin. Ft. Sta. 30+48 Beginning of Typical Section.

See computation of quantities for extra B-35 Material (25 Cu. Yds.) for improving profile on each side of Railroad Crossing. Place this material over areas designated by Engineer.

Station	Surface Elevations
15	668.99
16	670.54
17	672.18
18	674.13
19	675.53
20	676.51
21	677.46
22	678.48
23	679.40
24	680.18
25	680.84
26	681.81
27	682.64
28	683.54
29	684.36
30	685.74
31	685.89 +45 685.60 +57 686.20

Miscellaneous Construction "D"

10 OHIO 1944 8
 FULTON COUNTY
 S.H.300, SEC. SWANTON (PA)

Ref No.	Station	Side	I-8 Adjust ManHole Top to grade Each	I-8 Adjust Flat Inlet Top to grade Each	I-8 Adjust Monument to grade Each	Remarks
11-D	31+58					Iron Box over Stone, & Broadway St
12-D	34+79	Lt		1		
13-D	33+42	Rt	1			
14-D	35+94	Lt		1		
15-D	36+07	Rt	1			
16-D	38+45.62				1	Iron Box over Stone, & Church St
17-D	38+70	Rt	1			
18-D	39+20	Lt	1			
19-D	40+49	Lt	1			
20-D	42+89	Lt	1			
21-D	44+99	Lt	1			
22-D	46+141				1	Iron Box over Stone
23-D	46+70	Lt	1			
Total			8	2	3	

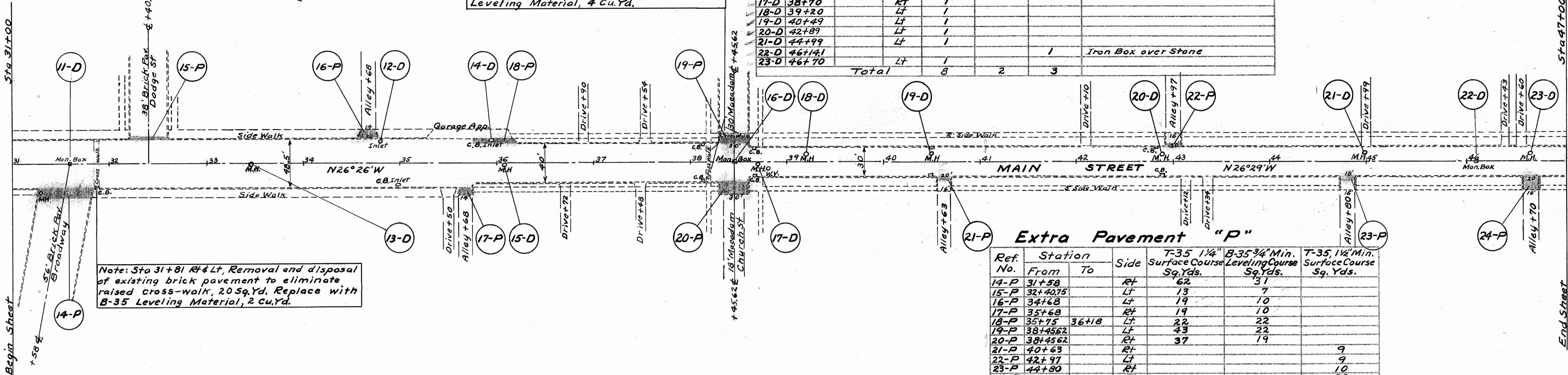
Note: Sta 38+20 Lt. & Rt., Sta 38+30 Lt., Sta 38+60 Lt., Removal and disposal of existing brick pavement to eliminate raised cross-walk, 40 Sq.Yd. Replace with B-35 Leveling Material, 4 Cu.Yd.

Note: Sta 31+81 Rt. & Lt., Removal and disposal of existing brick pavement to eliminate raised cross-walk, 20 Sq.Yd. Replace with B-35 Leveling Material, 2 Cu.Yd.

Extra Pavement "P"

Ref No.	Station	Side	T-35 1 1/4" Surface Course Sq.Yds.	B-35 3/4" Min. Leveling Course Sq.Yds.	T-35 1 1/2" Min. Surface Course Sq.Yds.
14-P	31+58	Rt	62	31	
15-P	32+40.75	Lt	13	7	
16-P	34+68	Lt	19	10	
17-P	35+68	Rt	19	10	
18-P	35+75	Lt	22	22	
19-P	38+45.62	Lt	43	22	
20-P	38+45.62	Rt	37	19	
21-P	40+63	Rt			9
22-P	42+97	Lt			9
23-P	44+80	Rt			10
24-P	46+70	Rt			30
Total			215	121	58

B.M.*8, Top of "R" Fire Hydrant
 19' Lt. of Sta 42+77
 Elev. 690.96



B.M.*6, Top Ctr. Conc. Block for Gun Mount
 34' Rt. of Sta 31+12
 Elev. 687.10

B.M.*7, S.W. Cor. Bottom Step
 32' Rt. of Sta. 36+81
 Elev. 689.55

690

685

Note: See Typical Section, Sheet No. 2 & 3

Station	Surface Elevation
31	68620
32	68746
33	68807
34	68843
35	68854
36	68864
37	68863
38	68848
39	68840
40	68820
41	68810
42	68787
43	68779
44	68799
45	68820
46	68839
47	68855

Miscellaneous Construction "D"

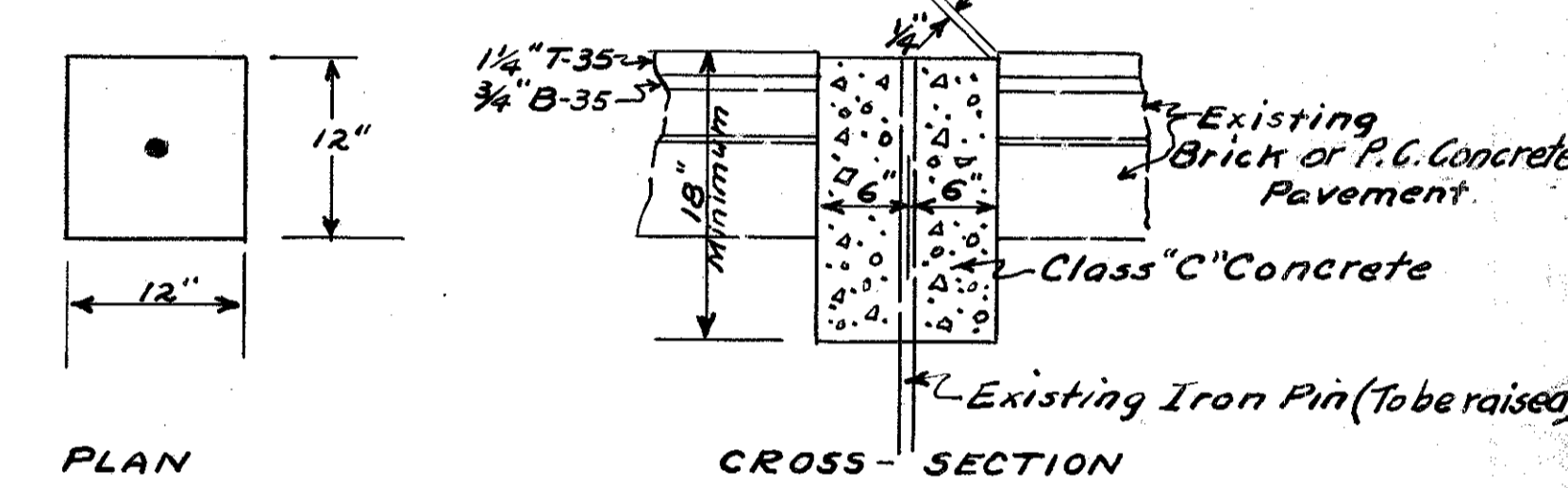
Ref No.	Station	Side	I-8 Adjust ManHole Top to grade Each	I-8 Adjust Monument to grade Each	Remarks
24-D	49+66	Lt	1		
25-D	49+7235			1	Iron Pin, & Fulton St, See details
26-D	54+25.7			1	Iron Pin, & Bromwell St, See details
27-D	54+26	Lt	1		
Total			2	2	

10 OHIO 1944 8
FULTON COUNTY
 S.H.300, SEC. SWANTON (Pt.)

Extra Pavement "P"

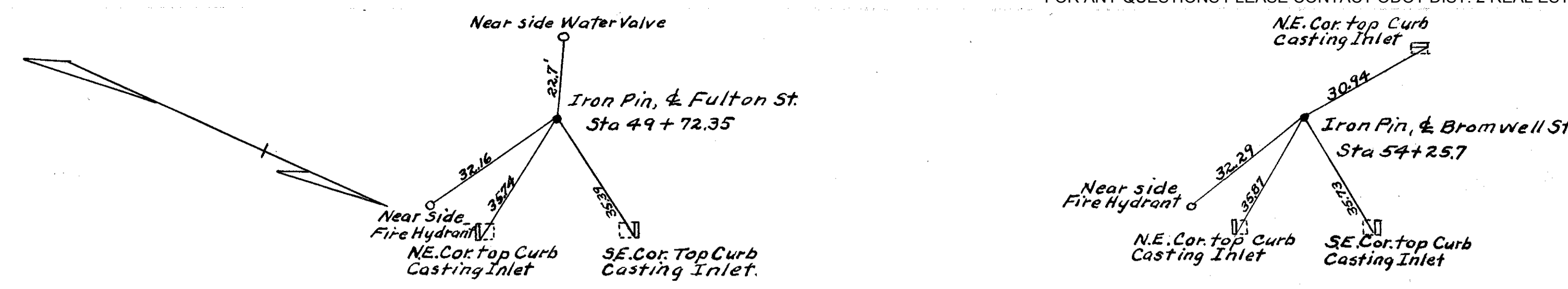
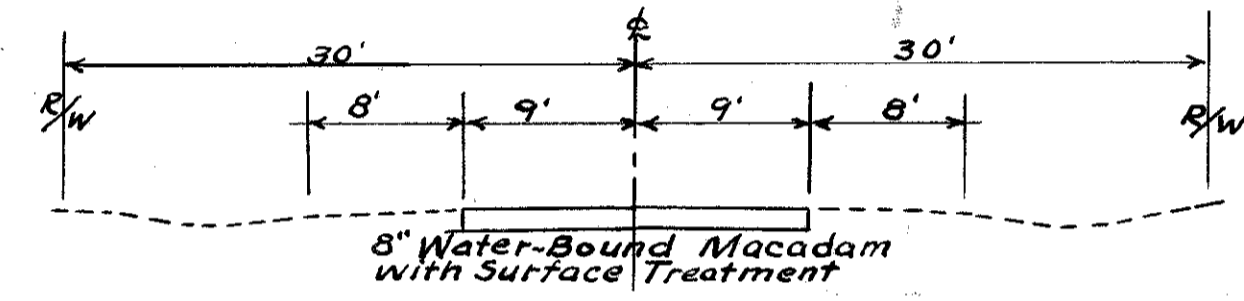
Ref No.	Station	Side	7-35 1/2 Min. Surface Course Sq. Yds.
25-P	49+7235	Rt	45
26-P	49+7235	Lt	46
27-P	54+25.7	Rt	45
28-P	54+53 54+65		32
Total			168

DETAIL showing Iron Pin Monument adjusted to grade.



PLAN
 Note: Cost of necessary Pavement Removal, raising of Iron Pin and of Class "C" Concrete is included in the Unit Price Bid for Adjusting Monuments to grade, Item I-B.

TYPICAL SECTION OF ADJOINING PAVEMENT SCALE 1"=10'

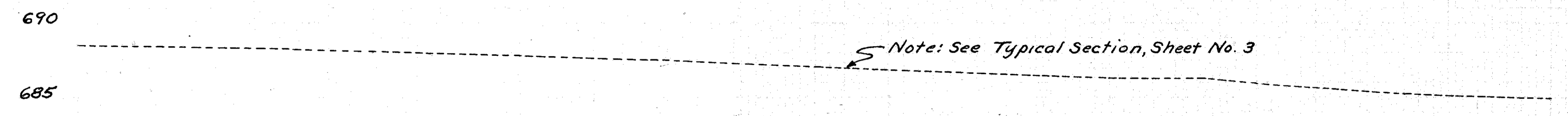


Sta 47+00
 Begin Sheet

End Project Sta 54+65

B.M.#9, Top of "R" Fire Hydrant
 19' Rt. of Sta. 49+46
 Elev. 690.60

B.M.#10, Top of "R" Fire Hydrant
 22' Rt. of Sta. 54+01
 Elev. 688.74



Station	Surface Elevation
47	688.55
48	688.34
49	688.07
50	687.82
51	687.45
52	687.06
53	686.73
54	686.31
54+65	686.21
55	685.90
56	685.21
57	684.91