

STATE OF OHIO
DEPARTMENT OF HIGHWAYS

FUL-20A-(25.82-26.07) LUC-20A-0.00
FULTON COUNTY LUCAS COUNTY
SWAN CREEK TOWNSHIP SWANTON TOWNSHIP
VILLAGE OF SWANTON

FED. RD. DIVISION	STATE	PROJECT
2	OHIO	STATE

1/27

FUL-20A-(25.82-26.07)
LUC-20A-0.00
FUL-64-(0.27-1.44)

FUL-64-(0.27-1.44)
FULTON COUNTY
FULTON TOWNSHIP
VILLAGE OF SWANTON

CONVENTIONAL SIGNS

- County Line -----
- Township Line -----
- Section Line -----
- Center Line -----
- Corporation Line -----
- Property Line -----
- Fence Line -----
- Pole Line ----- Telephone ♂ ♂ Power ♂ ♂
- Railroads -----
- Drain Pipe ----- Existing ----- Proposed -----

INDEX OF SHEETS

- Title Sheet ----- 1
- Typical Sections ----- 2 & 3
- General Summary ----- 4
- General Notes ----- 4
- Pavement Calculations ----- 5 & 6
- Sub Summaries ----- 7 & 8
- Intersection Details ----- 9
- Plan and Profile Sheets ----- 10 to 19
- Cross Section Sheets ----- 20 to 27

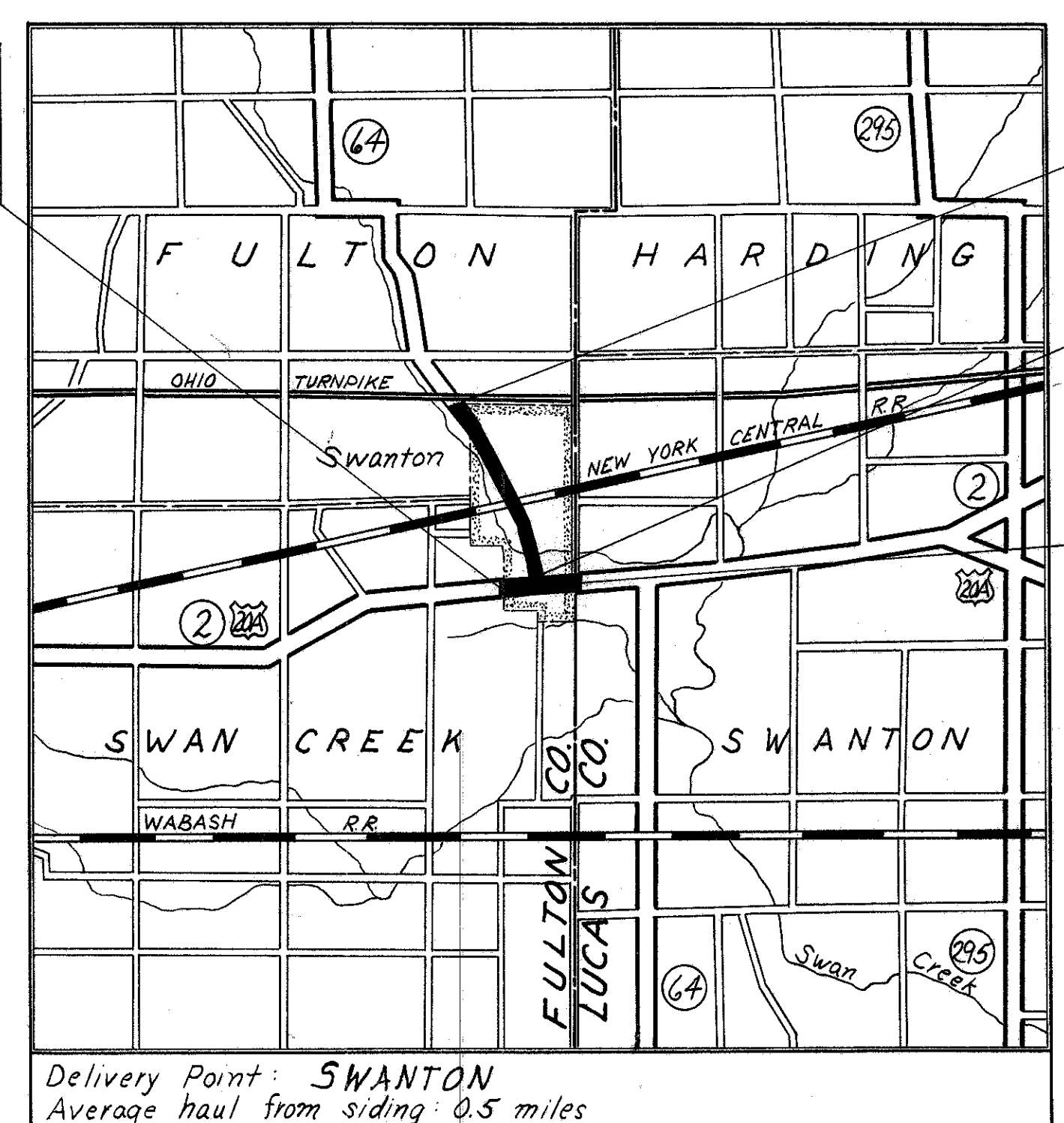
LINE DATA

STATION		RURAL	HALF WIDTH RURAL	HALF WIDTH MUNICIPAL	MUNICIPAL	TOTAL LENGTH
FUL-20A-(25.82-26.07) LUC-20A-0.00						
Work						
1359+20.95	4+10	Lin. Ft.	820.00	805.30	1833.35	3458.65
		Miles	0.155	0.152	0.347	0.655
Project						
1363+30.95	1389+69.60	Lin. Ft.	-	805.30	1833.35	2638.65
		Miles	-	0.152	0.347	0.499
FUL-64-(0.27-1.44)						
Work & Project						
14+19	90+03	Lin. Ft.	-	1531.0	*5998.0	*7529.00
		Miles	-	0.289	1.135	1.425
Total Project						10167.65 Ft. 1.925 Mi.
Total Work						10987.65 Ft. 2.080 Mi.

* Deduct 55.00 Ft. for Railroad

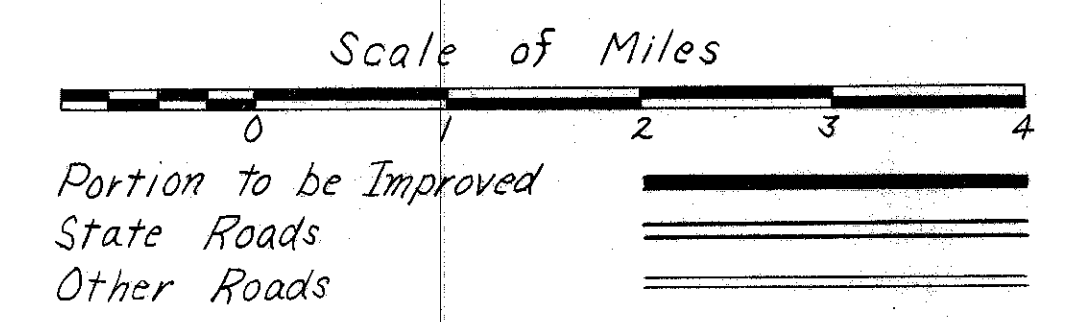
File No	FULTON COUNTY	FUL-20A-(25.82-26.07) LUC-20A-0.00
Date of Letting		FUL-64-(0.27-1.44) 196
Contract No.		

Begin Work - Sta. 1359+20.95
Begin Project - Sta. 1363+30.95
FUL-20A-(25.82-26.07)
LUC-20A-0.00



Delivery Point: SWANTON
Average haul from siding: 0.5 miles

LOCATION MAP



SCALES

- Plan ----- 1" = 20'
- Profile Horizontal ----- 1" = 20'
- Vertical ----- 1" = 5'
- Cross Sections ----- 1" = 5'

SUPPLEMENTAL SPECIFICATIONS

STANDARD DRAWINGS

DR-1	1-3-55	I-8 M.H. No.1	1-26-59	G-7.07	6-1-56
I-1	11-15-60	I-12	7-1-54	L-1	4-1-50
I-8 C.B. 1-2-A&B	1-26-59	L-3	4-1-50	I-8 M.H. No.1-A	10-2-61
I-8 C.B. No.3	1-26-59	L-3-A	4-1-50		
I-8 C.B. No.3-A	1-26-59	RI-1	7-15-58		
I-8 C.B. No.6	1-26-59	T-35	1-2-56		
I-8 I No.1	3-2-59	I-8 I No.2	4-23-59		

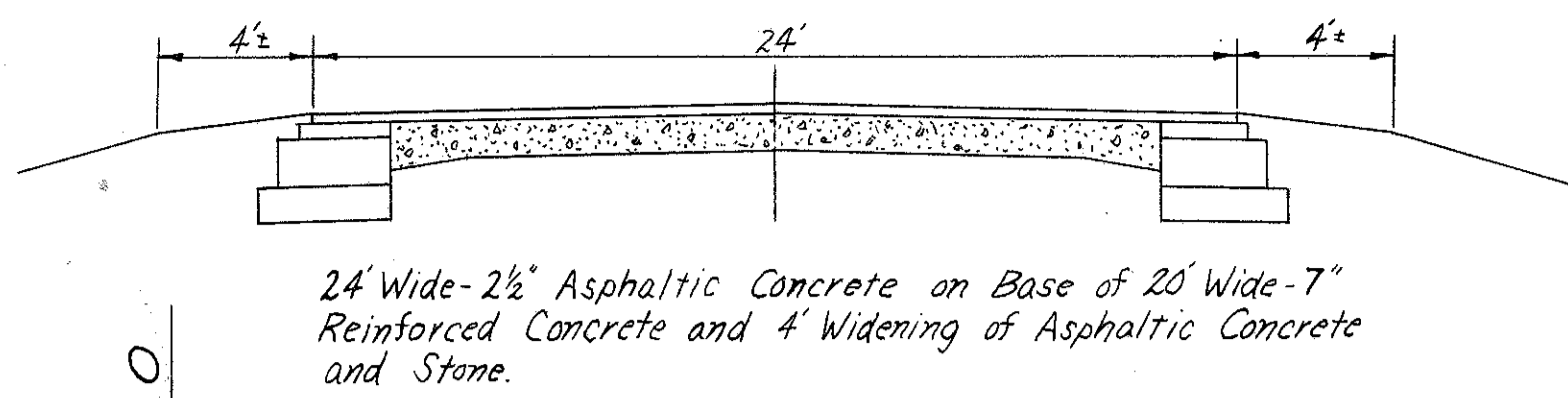
The standard specifications of the State of Ohio, Department of Highways, including changes and supplemental specifications listed in the proposal shall govern this improvement.

The right of way for this improvement will be provided by the State of Ohio.

I hereby approve these plans and declare that the making of this improvement will not require the closing of the highway to traffic and that provisions for the maintenance and safety of traffic will be as set forth on the plans and estimates.

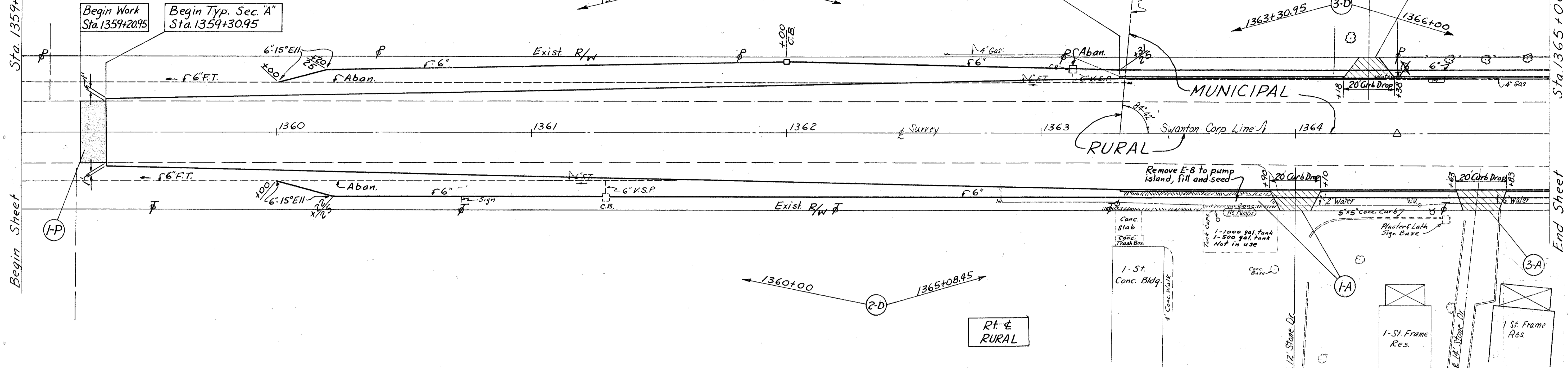
- Approved Ray L. Lutz
Date 10-6-61 Mayor of Swanton
- Approved L. W. Lulu
Date 10-30-61 Division Deputy Director
- Approved A. W. Worman
Date 11-17-61 Engineer of Bridges
- Approved W. W. Worman
Date 11-24-61 Engineer of Location and Design
- Approved C. W. McCaughey
Date 11-21-61 Deputy Director of Design and Construction
- Approved _____
Date _____ Deputy Director of Right of Way
- Approved Ray E. Decker
Date 11-28-61 Deputy Director of Planning and Programming
- Approved A. Berry
Date 11-29-61 First Assistant Director
- Approved E. A. Preston
Date 11-29-61 Director of Highways

TYPICAL SECTION OF ADJOINING PAVEMENT



Sta. 1359+00
Begin Sheet

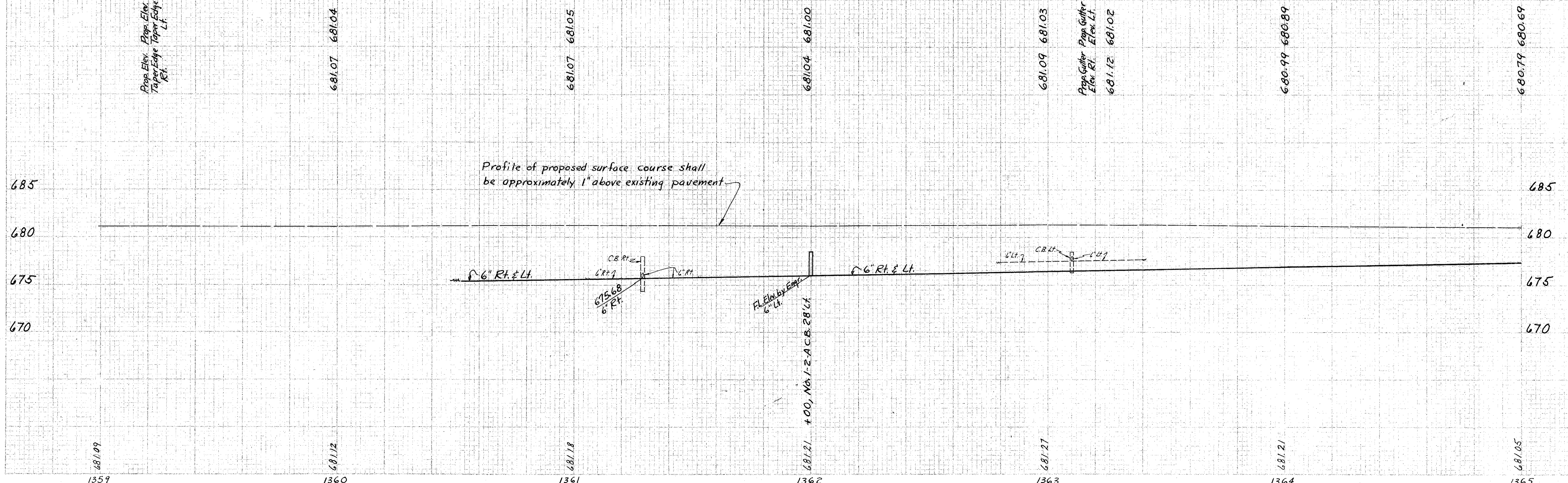
Sta. 1365+00
End Sheet



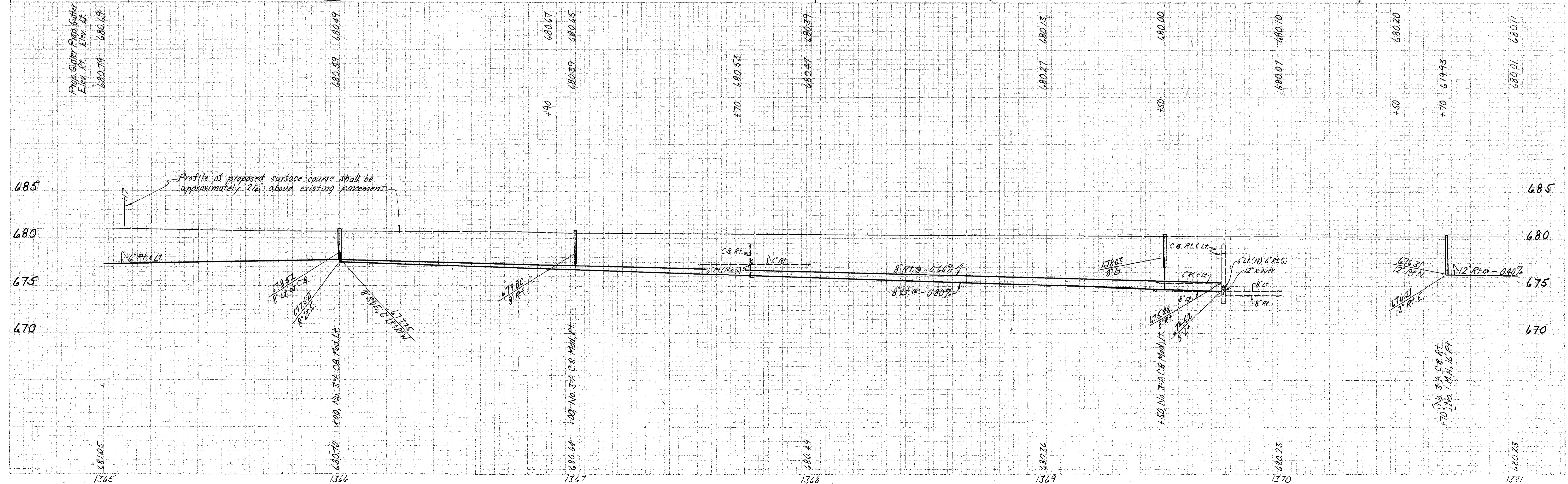
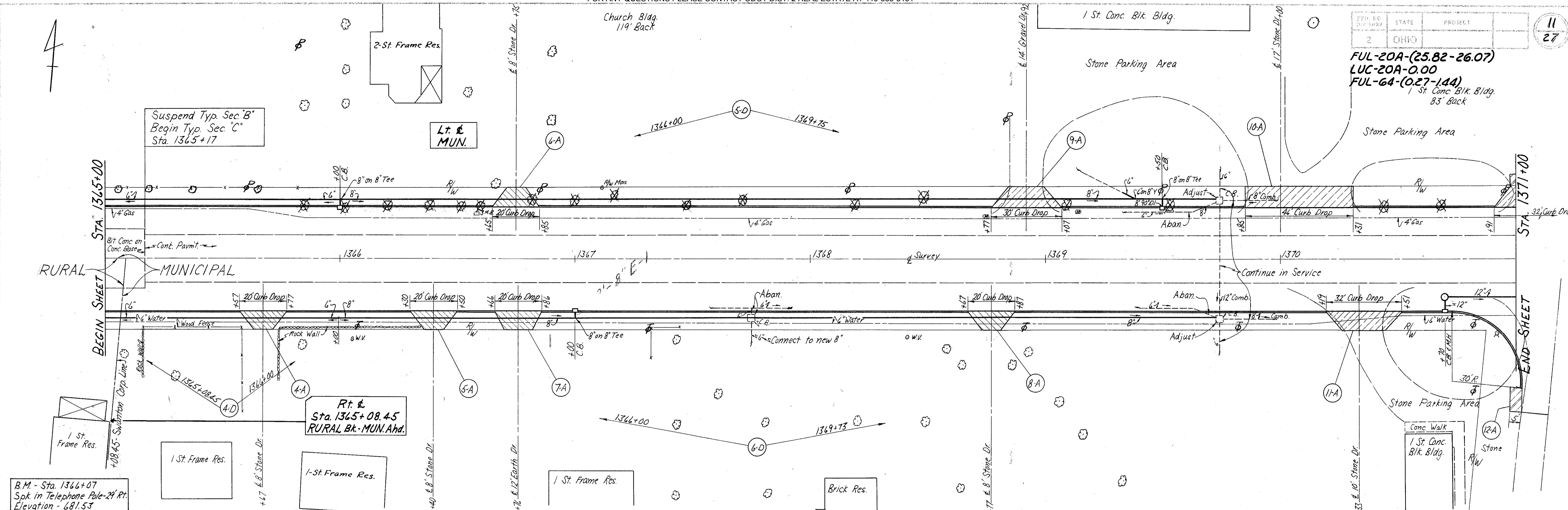
Prop. Elev. Prop. Edge Taper Edge RT.

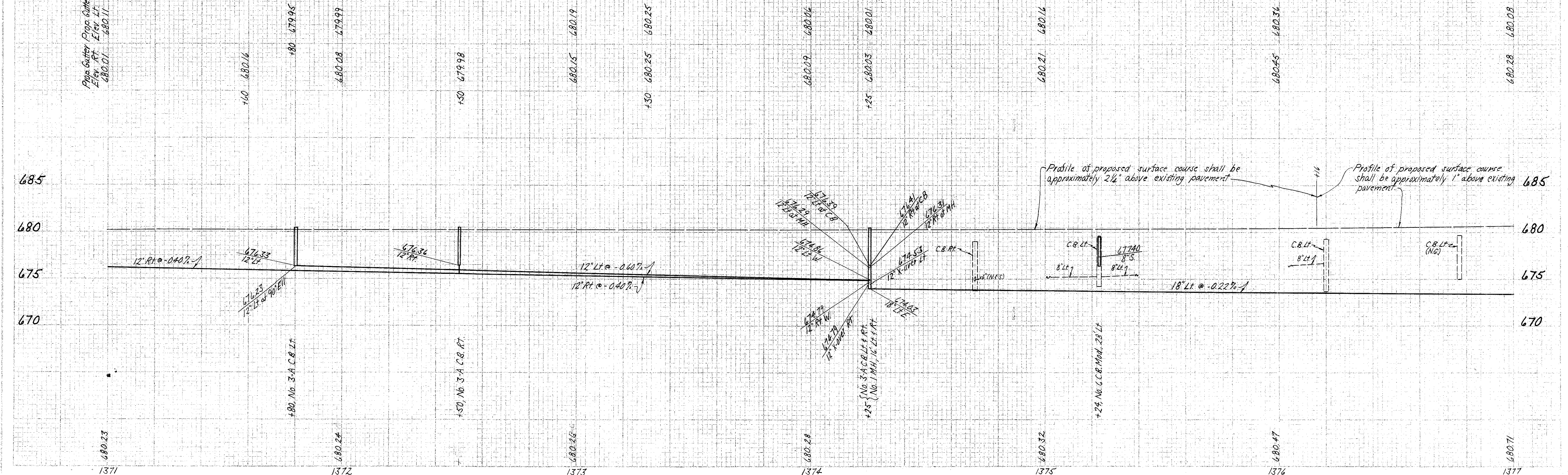
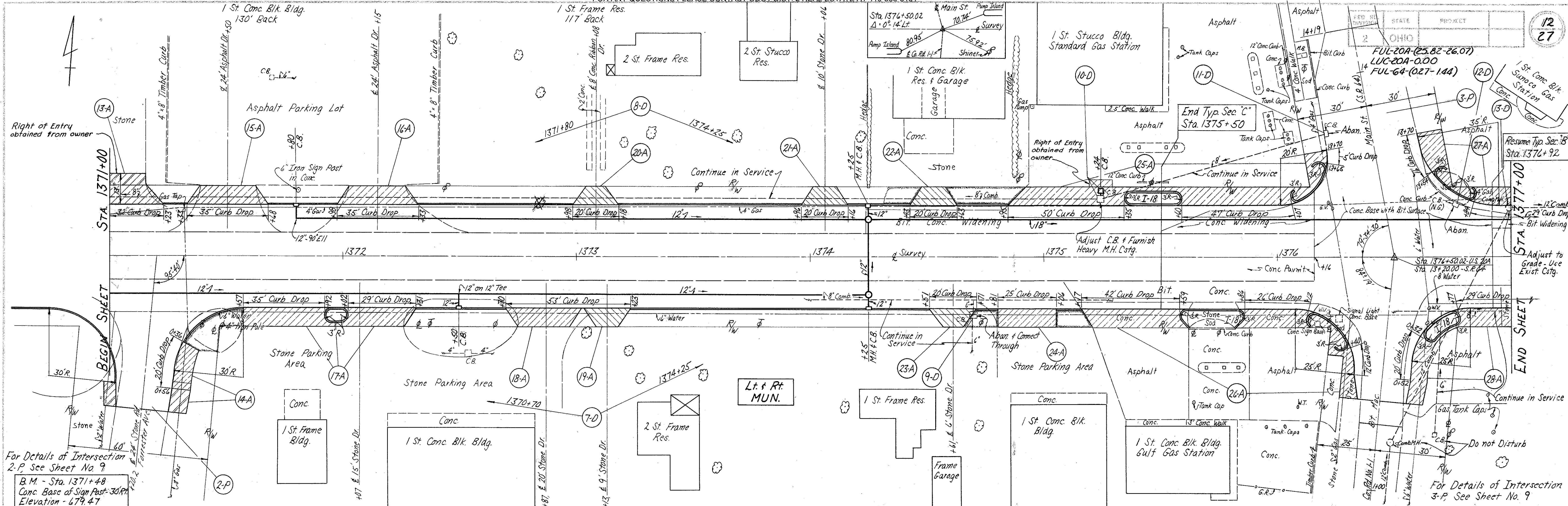
B.M. Sta. 1360+39
Spk in Power Pole-31' Lt.
Elevation - 681.80

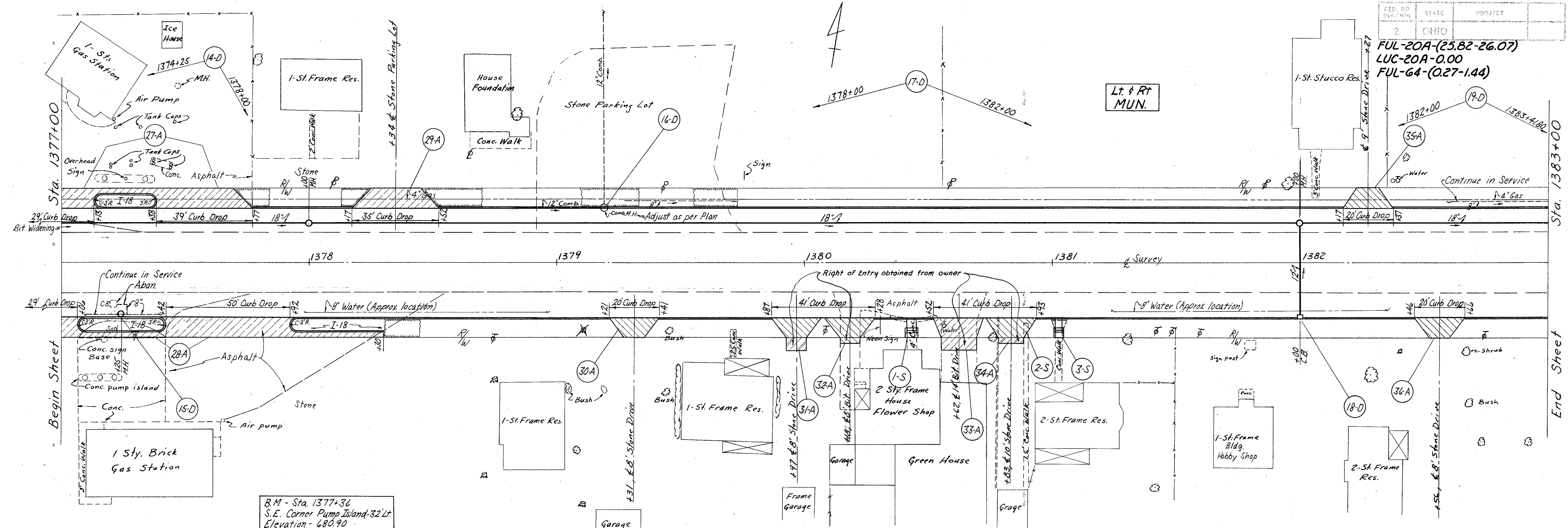
B.M. Sta. 1363+48
N.E. Corner Conc. Walk-44' Rt.
Elevation - 681.96



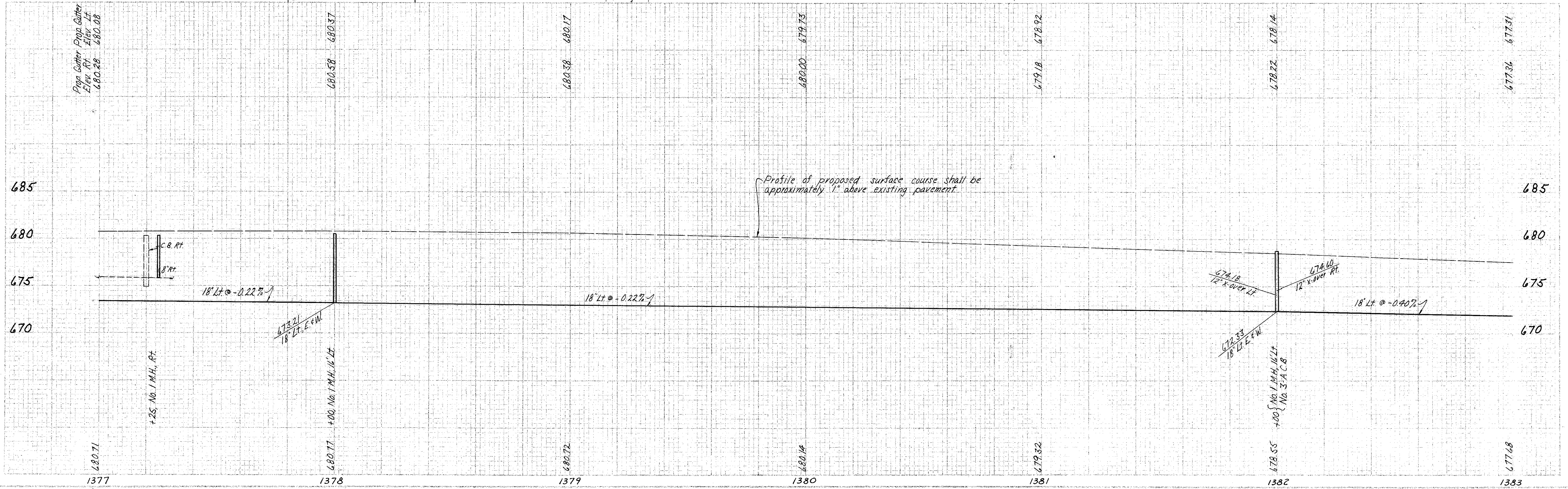
FUL-20A-(25.82-26.07)
 LUC-20A-0.00
 FUL-64-(0.27-1.44)
 1 St. Conc. Bldg. 83' Back







B.M. - Sta. 1377+36
S.E. Corner Pump Island-32 Lt
Elevation - 680.90

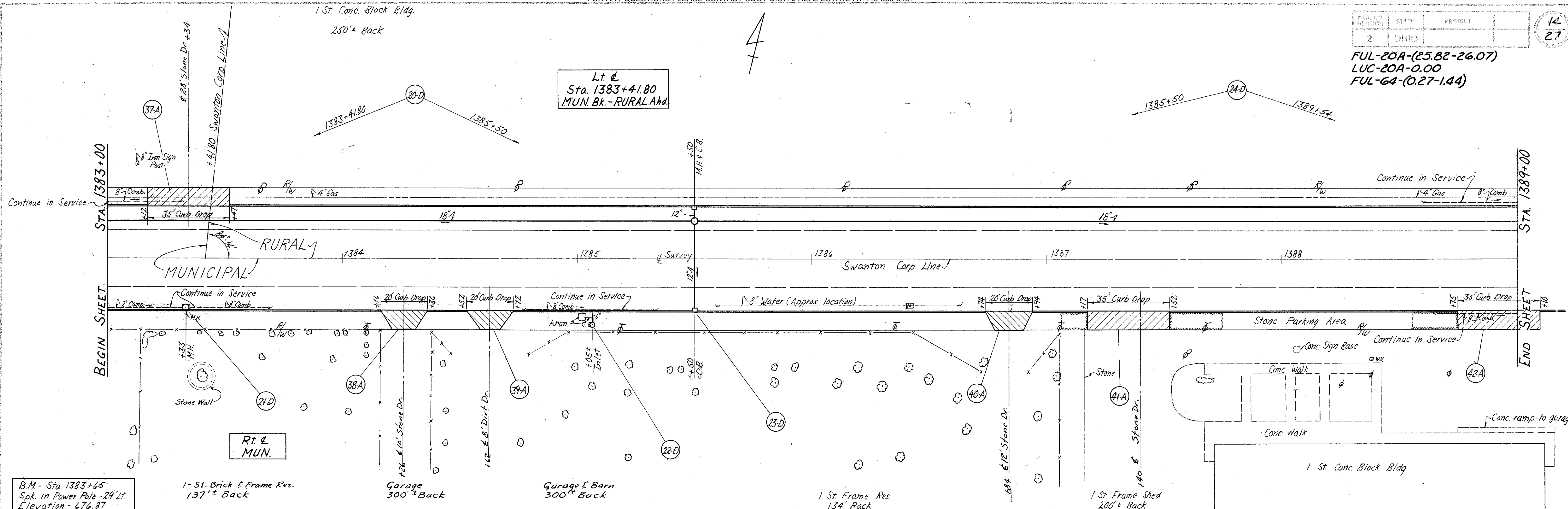


FED. RD. DIST.	STATE	PROJECT	
2	OHIO		

14
27

FUL-20A-(25.82-26.07)
LUC-20A-0.00
FUL-64-(0.27-1.44)

Lt. &
Sta. 1383+41.80
MUN. Bk. - RURAL Ahd.



B.M. - Sta. 1383+65
Sok. in Power Pole - 29' Lt.
Elevation - 676.87

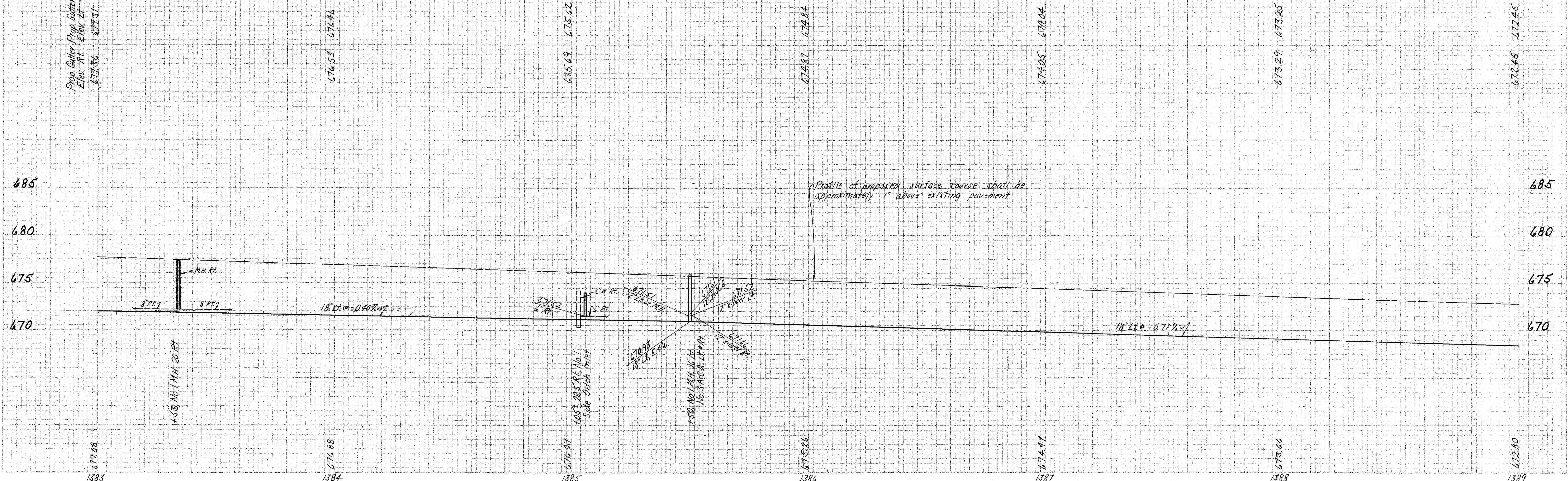
1 - St. Brick & Frame Res.
137'± Back

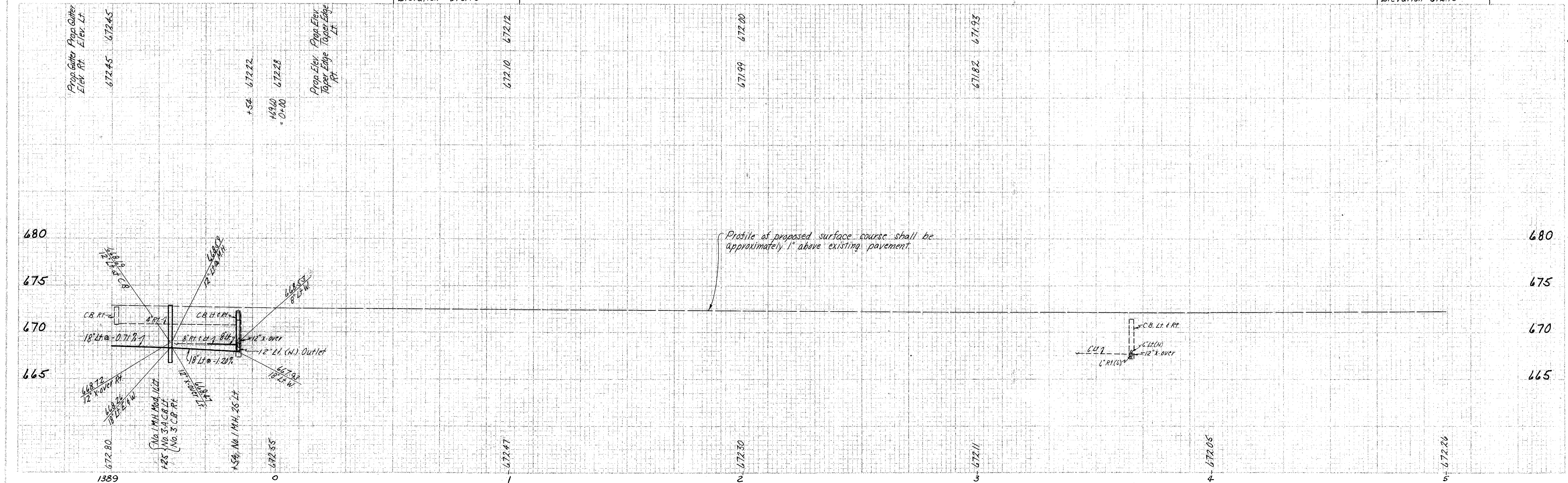
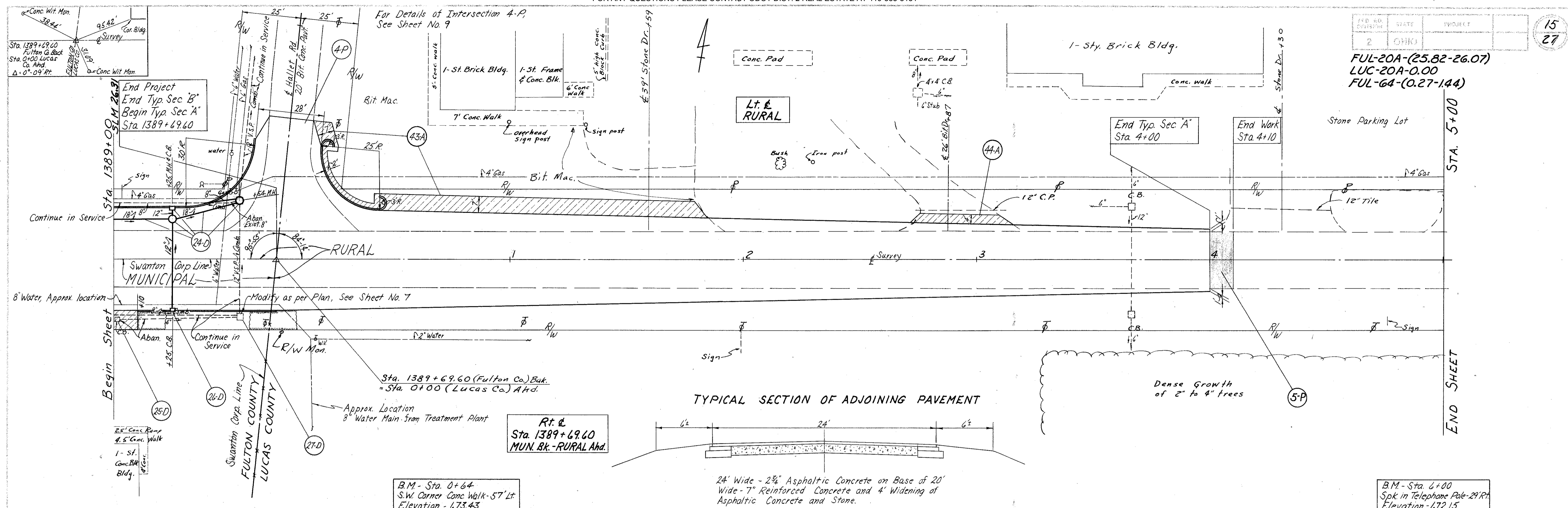
Garage
300'± Back

Garage & Barn
300'± Back

1 St. Frame Res.
134' Back

1 St. Frame Shed
200± Back





Sta. 20+66.5 & Survey
Iron Pin

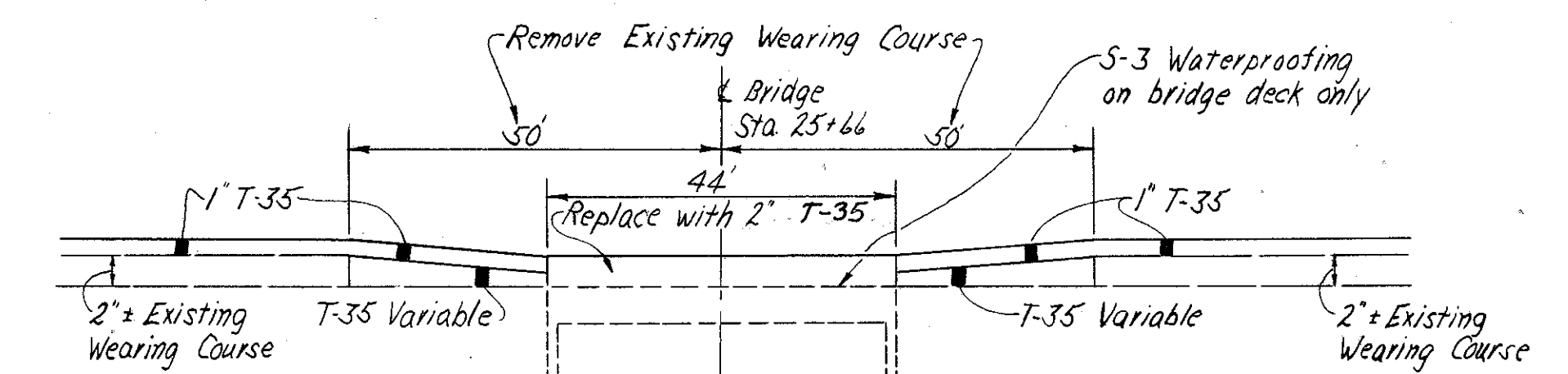
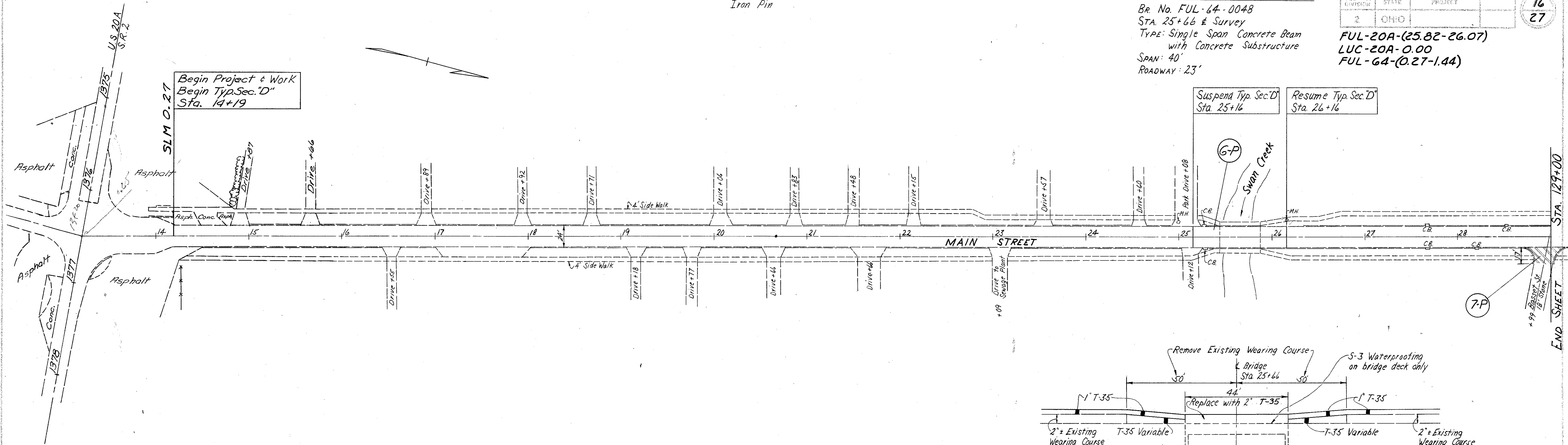
DATA ON EXISTING STRUCTURE

Br. No. FUL-64-0048
Sta. 25+66 & Survey
Type: Single Span Concrete Beam
with Concrete Substructure
SPAN: 40'
ROADWAY: 23'

FED. RD. DIVISION	STATE	PROJECT	
2	OHIO		

16
27

FUL-20A-(25.82-26.07)
LUC-20A-0.00
FUL-64-(0.27-1.44)



NOTE:
The profile of the proposed surface course shall be approximately 1 inch above that of the existing pavement.

Sta. 32+26.54
Iron Pin

Sta. 37+10.94
Iron Pin

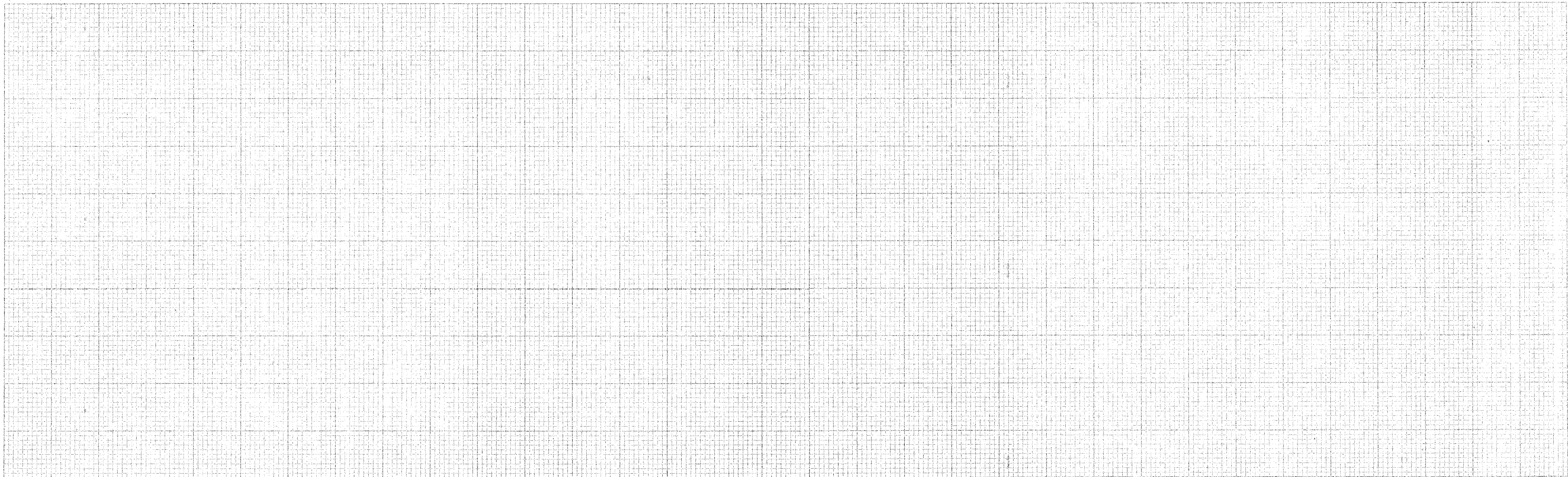
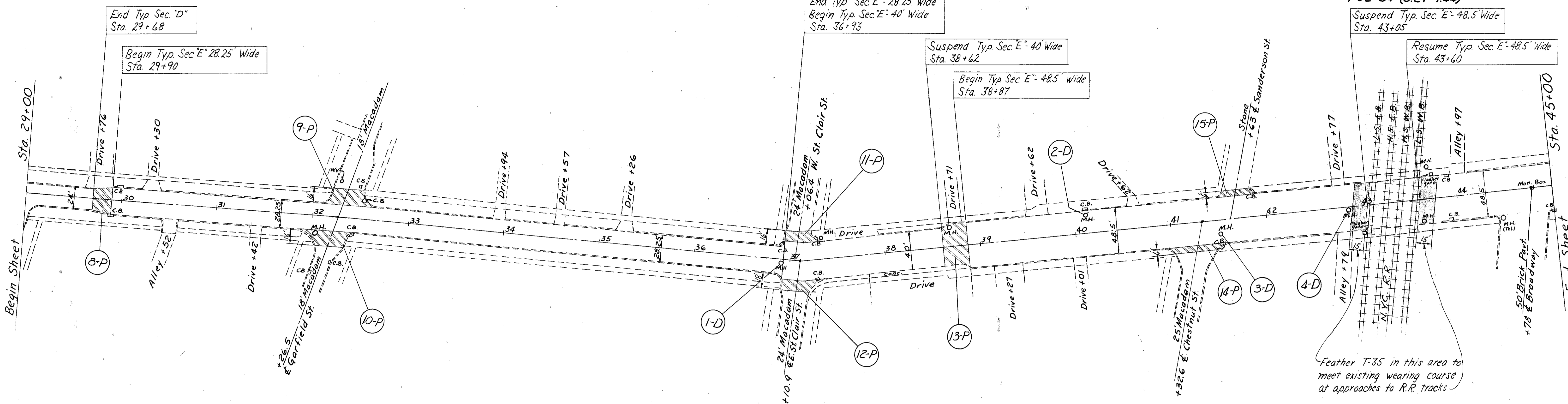
Sta. 41+32.6
Iron Pin

CSD. E.D. DIVISION	STATE	PROJECT	17
2	OHIO		27

FUL-20A-(25.82-26.07)
LUC-20A-0.00
FUL-64-(0.27-1.44)

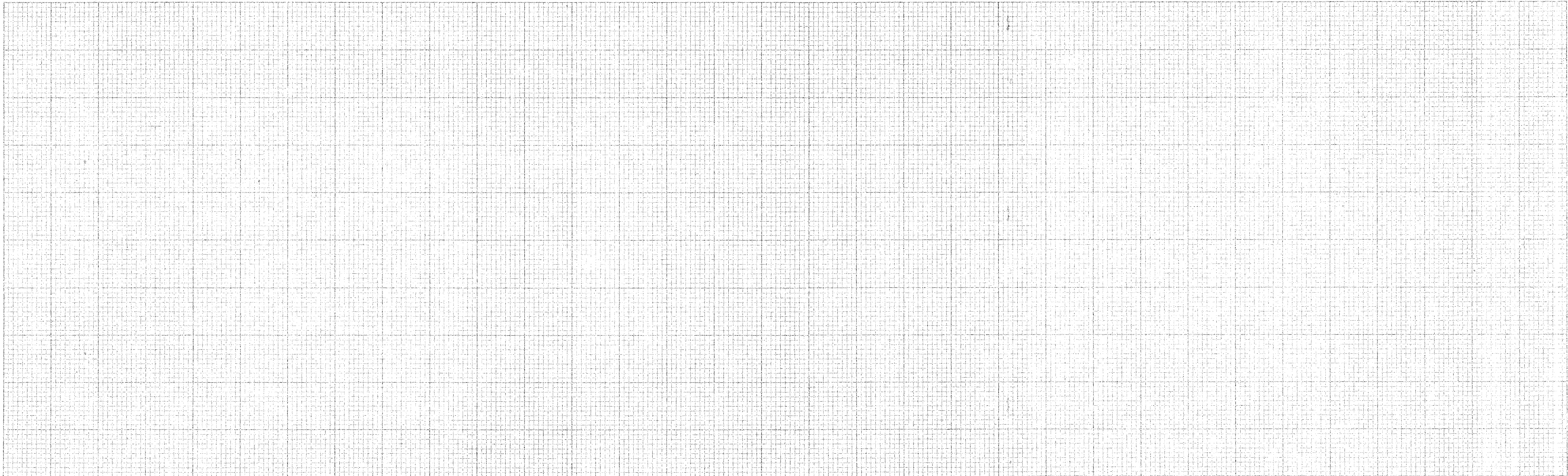
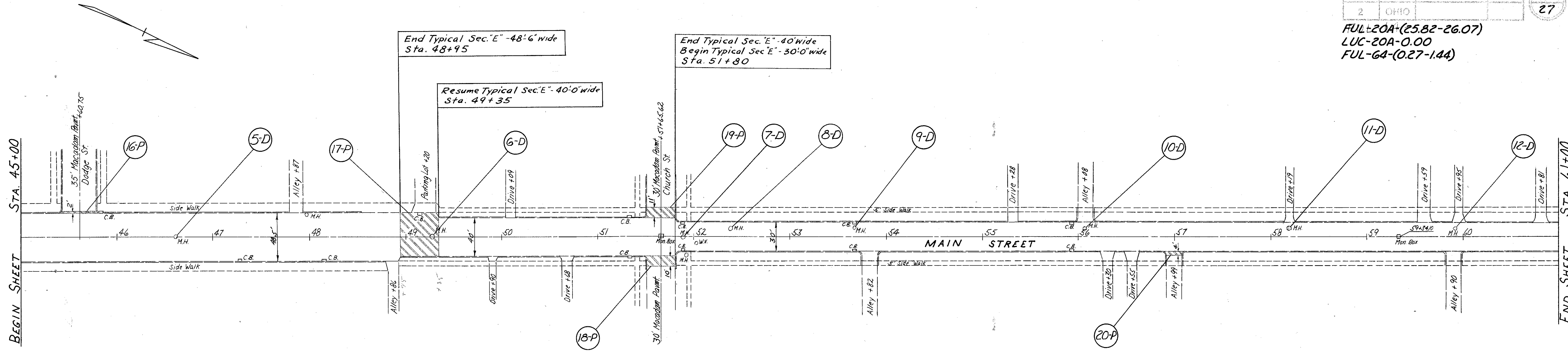
Suspend Typ. Sec. E'-48.5' Wide
Sta. 43+05

Resume Typ. Sec. E'-48.5' Wide
Sta. 43+60



FED. RD DISTRICT	STATE	PROJECT	18
2	OHIO		27

FUL-20A-(25.82-26.07)
 LUC-20A-0.00
 FUL-64-(0.27-1.44)



Sta. 62+92.35
Iron Pin

Sta. 67+45.7
Iron Pin

NO. BY	DATE	PROJECT	19
2	OHIO		27

FUL-20A-(25.82-26.07)
LUC-20A-0.00
FUL-64-(0.27-1.44)

