

Scanned June 1997

SEC. 35 R-8-E T-8-N FULTON TWP.

FOR ANY QUESTIONS PLEASE CONTACT ODOT DIST. 2 REAL ESTATE AT 419-353-8131

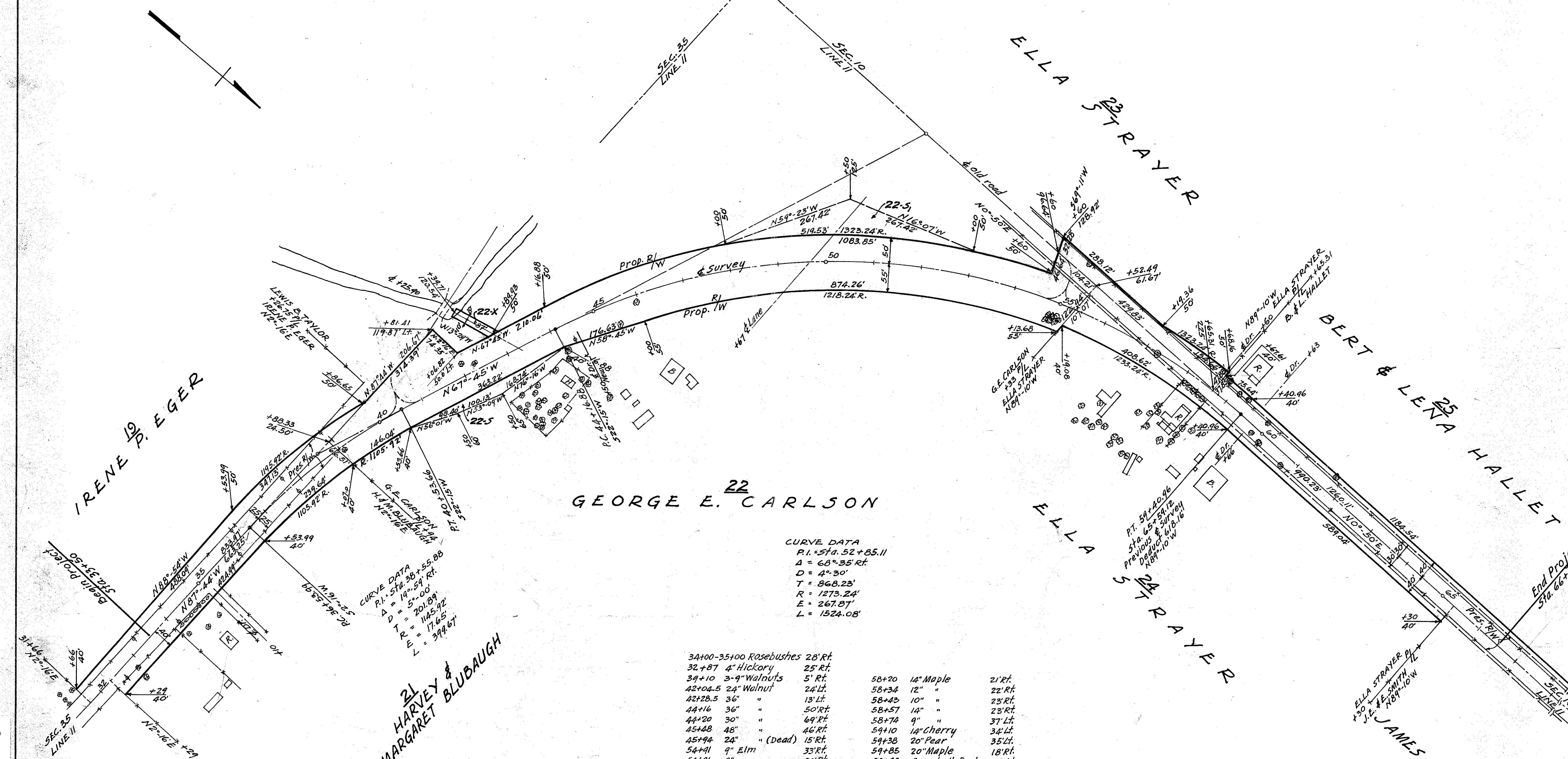
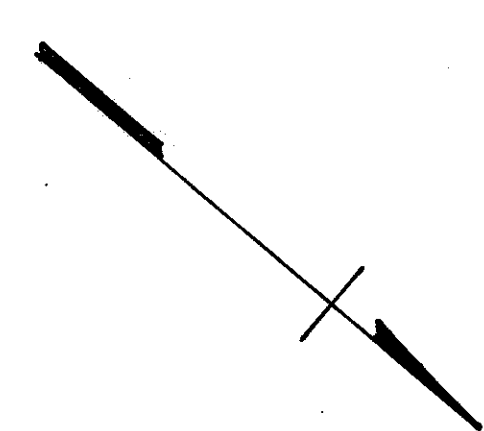
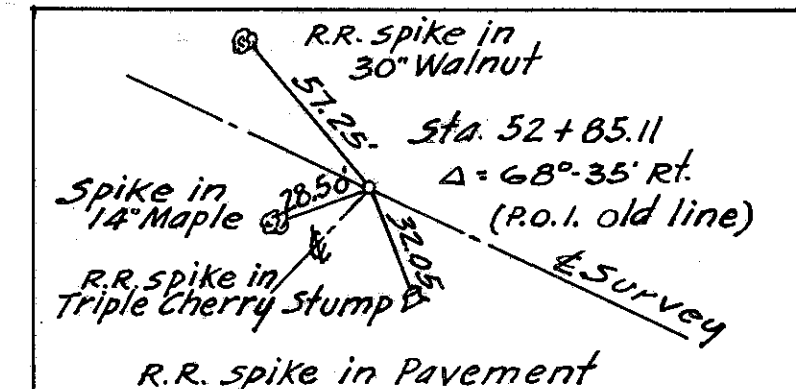
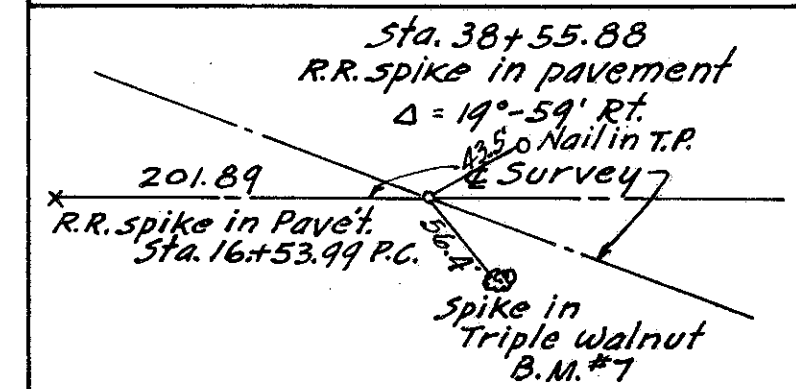
SEC. 10 R-4-E T-10-S FULTON TWP.

FULTON COUNTY
S.H. 300 SEC. E (PT)
R/W PLAN

27
1
1

Date: Mar. 5, 1941.
Revised 3/25/41
Length of Project: 3400.00 LIN. FT. = 0.644 MI.

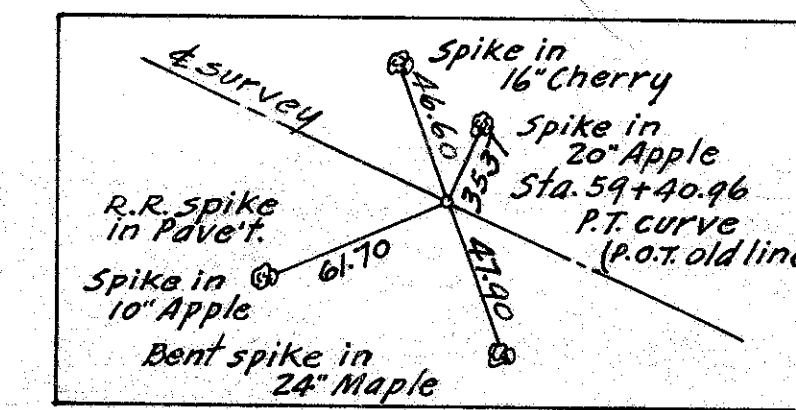
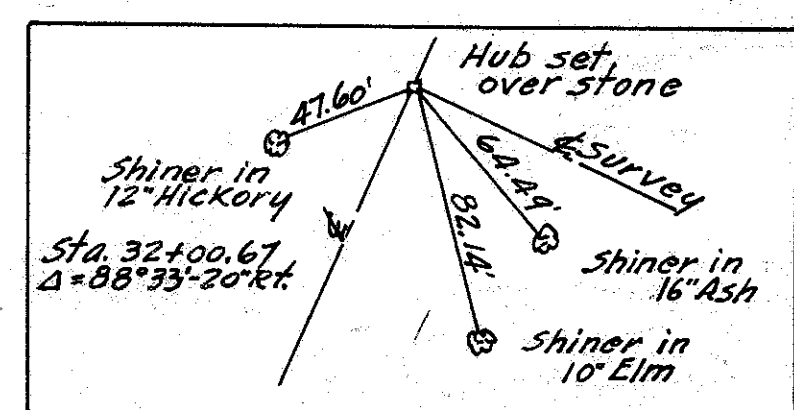
FUL-64



21 HARVEY & MARGARET BLUBAUGH

CURVE DATA
P.I. = Sta. 52+85.11
Δ = 68° 35' Rt.
D = 4° 30'
T = 868.23'
R = 1273.24'
E = 267.87'
L = 1524.08'

34+00-35+00	Rosebushes	28' Rt.
32+87	4" Hickory	25' Rt.
39+10	3-9" Walnuts	5' Rt.
42+04.5	24" Walnut	24' Lt.
42+28.5	36"	13' Lt.
44+16	36"	50' Rt.
44+20	30"	69' Rt.
45+28	48"	46' Rt.
45+94	24" (Dead)	15' Rt.
54+91	9" Elm	33' Rt.
54+91	9"	39' Rt.
54+95	12" Butternut	39' Rt.
55+00	4-12" Elms	29' 31' Rt.
55+23	12" Twin Basswood	100' Lt.
57+26	24" Maple	4' Rt.
58+06	12"	20' Rt.
58+20	14" Maple	21' Rt.
58+34	12"	22' Rt.
58+43	10"	23' Rt.
58+57	14"	23' Rt.
58+74	9"	37' Lt.
59+10	14" Cherry	34' Lt.
59+38	20" Pear	35' Lt.
59+85	20" Maple	18' Rt.
59+98	Snowball Bush	25' Lt.
60+04	18" Maple	20' Rt.
60+73	24" Apple	23' Rt.
61+77	10"	37' Lt.
55+00	30" Butternut	41' Rt.



SEC. 11 R-4-E T-10-S FULTON TWP.

R104
#1
A-15

A-15