

FED. RD. DIVISION	STATE	PROJECT	TYPE FUNDS
2	OHIO	H. I. F.	1953

FULTON COUNTY
 FUL-64-(9.93-10.70)
 FUL-120-(13.65-14.08)

STATE OF OHIO
 DEPARTMENT OF HIGHWAYS
 FUL-64-(9.93-10.70)
 FUL-120-(13.65-14.08)
 FULTON COUNTY
 VILLAGE OF METAMORA
 AMBOY TOWNSHIP

The Standard Specifications of the State of Ohio Department of Highways, including changes and Supplemental Specifications listed in the proposal Shall Govern this Project

The Right of way necessary for this improvement will be provided by the State of Ohio

I hereby approve these plans and declare that the making of this improvement will not require the closing to traffic of the Highway and that provisions for the maintenance and Safety of Traffic will be as set forth on the Plans and Estimates.

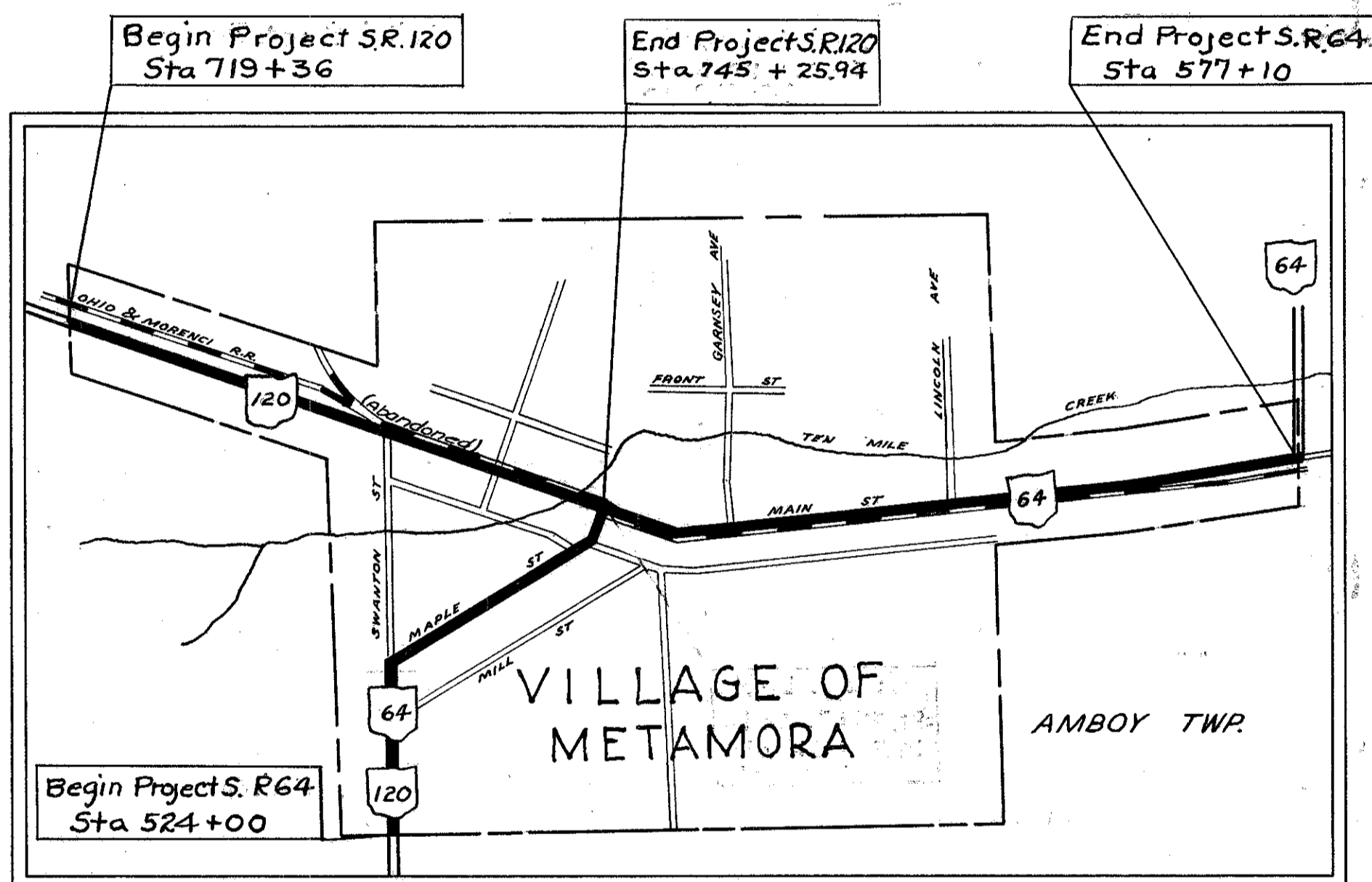
- Approved: George W. Fisher
 Date: June 5, 1953 Division Deputy Director
- Approved: _____
 Date: _____ Chief Engineer, Bureau of Maintenance
- Approved: _____
 Date: _____ Chief Engineer, Bureau of Bridges & R.R. Crossings
- Approved: W. J. Schaublin
 Date: 7/8/53 Chief Engineer, Bureau of Location & Design
- Approved: John J. Heier
 Date: 7-7-53 Chief Engineer, Bureau of Planning & Programming
- Approved: W. J. Schaublin
 Date: 7-8-53 First Asst. Director & Chief Engineer
- Approved: W. J. Schaublin
 Date: 7-7-53 Director of Highways

CONVENTIONAL SIGNS

COUNTY LINE	-----
TOWNSHIP LINE	-----
SECTION LINE	-----
CORPORATION LINE	-----
FENCE LINE	-x-x-x-
CENTER LINE	o o o o
POLE LINE	o o o o
RAILROAD	====
GUARD RAIL

INDEX OF SHEETS

TITLE SHEET	1
TYPICAL SECTIONS	2
GENERAL SUMMARY, GENERAL NOTES & PAVEMENT COMPUTATIONS	3
EXTRA PAVEMENT, SIDE APPROACHES & DRAINAGE TABLES	4
PLAN & PROFILE	5-10
CROSS SECTIONS	11-13



DELIVERY POINT SWANTON AVERAGE HAUL 9 MI.

LOCATION PLAN

Scale 1"=600 ft.

PORTION TO BE IMPROVED	=====
STATE HIGHWAYS	=====
OTHER ROADS	=====
DETOURS	None

SCALES

PLAN	1" = 50'
PROFILE HORIZONTAL	1" = 50'
PROFILE VERTICAL	1" = 5'
CROSS SECTIONS	1" = 5'

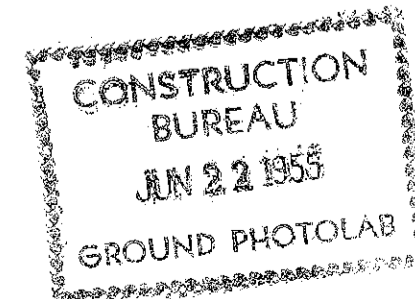
LINE DATA

Begin Project S.R. 64	Sta. 524+00
End Project S.R. 64	Sta. 577+10
No Deductions or Additions	
Gross Length = Net Length	5310.00 Lin. Ft. or 1.006 Mi.
Begin Project S.R. 120	Sta 719+36
End Project S.R. 120	Sta 745+25.94
No Deductions or Additions	
Gross Length = Net Length	2589.94 Lin. Ft. or 0.490 Mi.
Total Net Length of Project	7899.94 Lin. Ft. or 1.496 Mi.

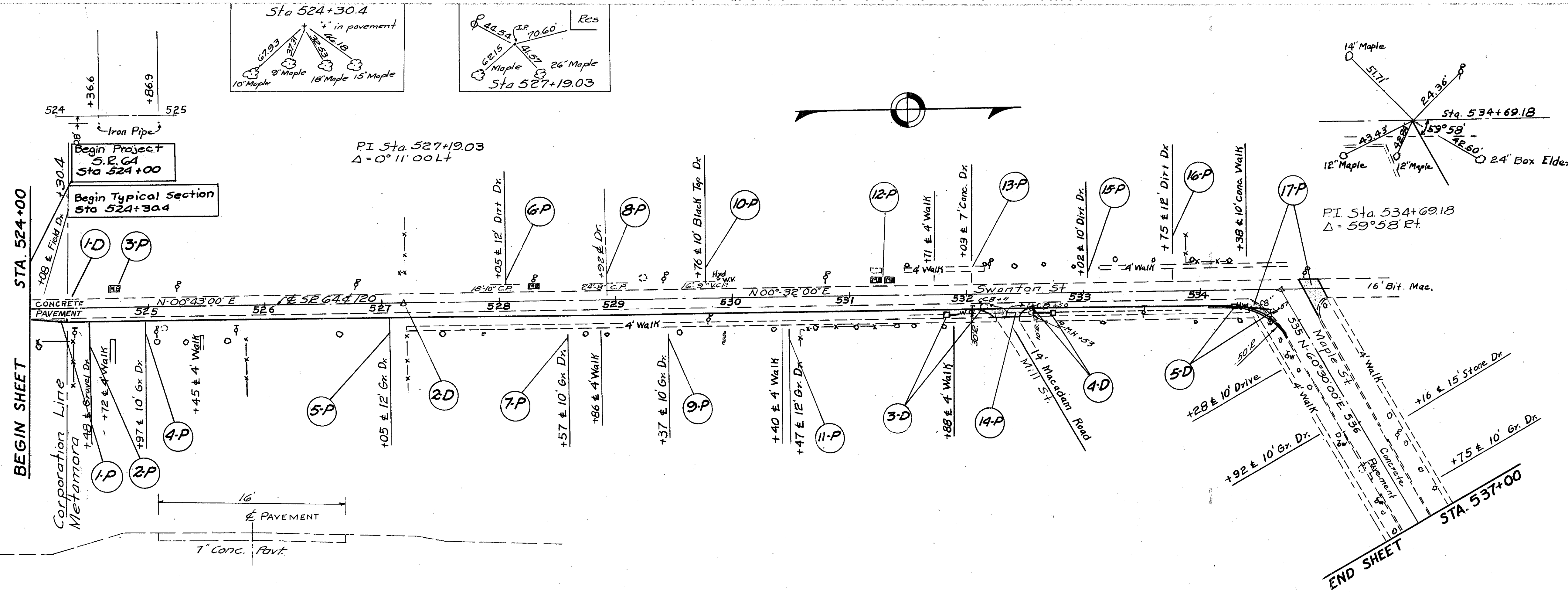
SUPPLEMENTAL SPECIFICATIONS	
M-101.7	1-24-53
CE-107	5-21-53
T-171.19	REV. 3-19-53
IO	REV. 3-19-53

STANDARD DRAWINGS	
I-12	1-25-52
I-123.445	2-20-45
I-8 C.B. 2-2A & B	5-1-52
I-8 C.B. No 3-A	5-1-52
T-35	10-1-52
RI-1	6-1-53
I-8 C.B. No 6	5-1-52

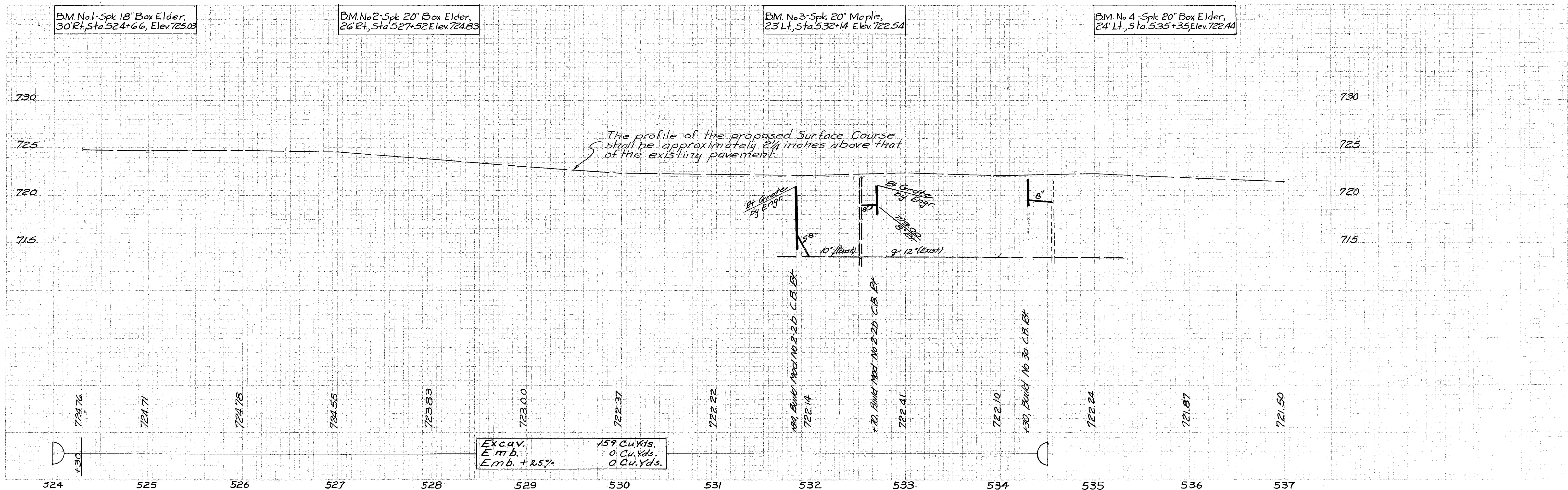
FILE NO.	FULTON COUNTY SEC. FUL-64-(9.93-10.70) SEC. FUL-120-(13.65-14.08)
DATE OF LETTING	
CONTRACT NO.	



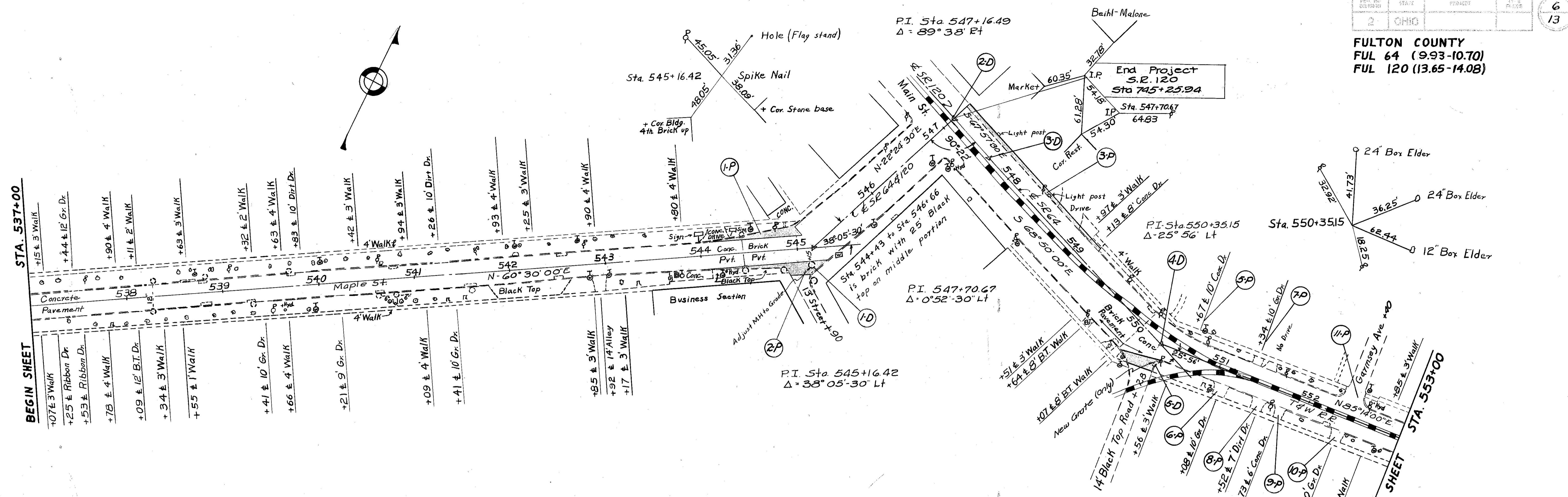
FULTON COUNTY
 FUL 64 (9.93-10.70)
 FUL 120 (13.65-14.08)



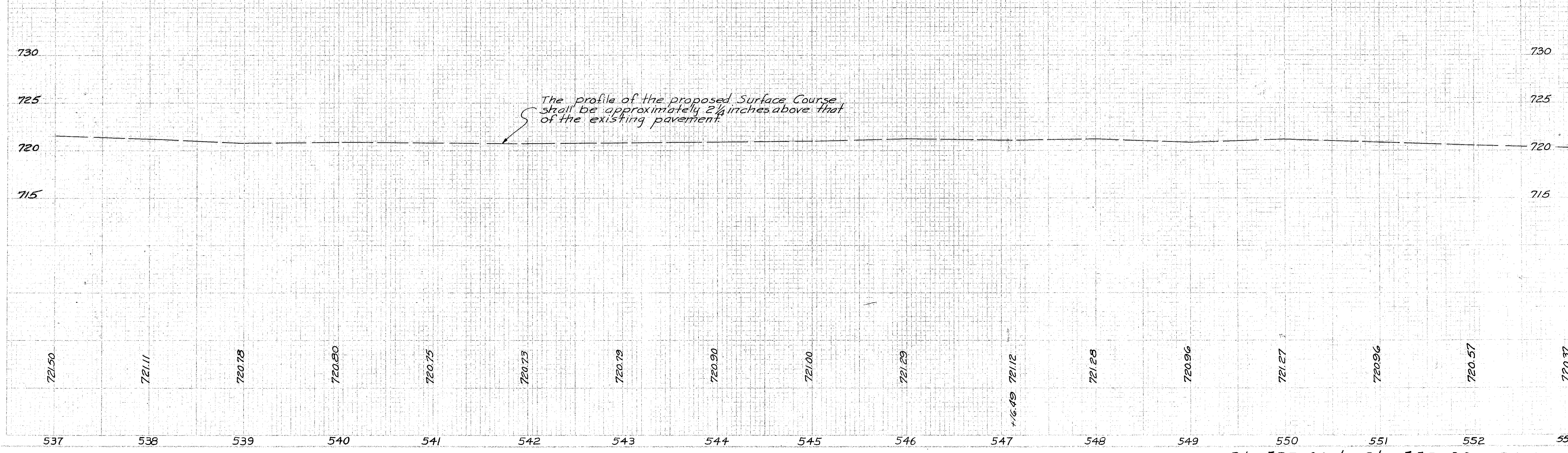
TYPICAL SECTION OF ADJOINING PAVEMENT



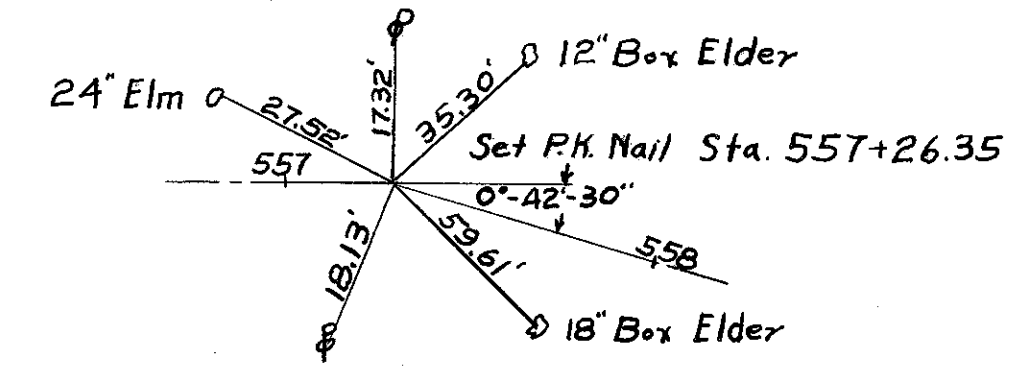
FULTON COUNTY
 FUL 64 (9.93-10.70)
 FUL 120 (13.65-14.08)



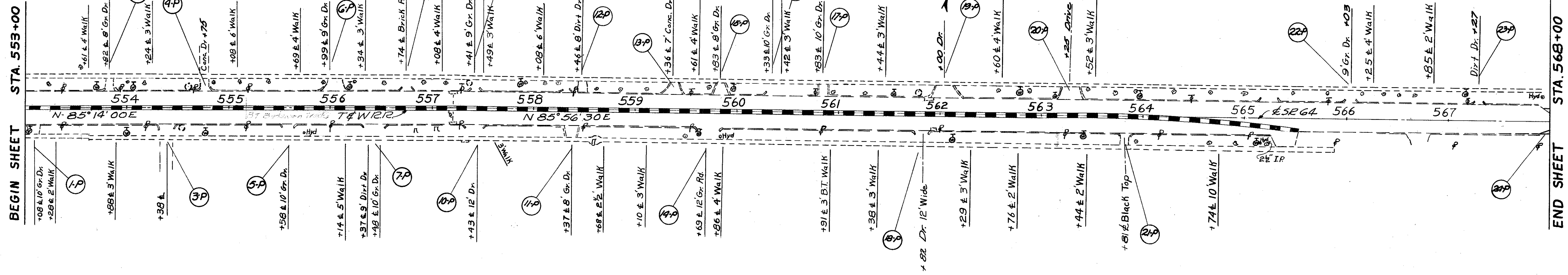
- BM.No.5 - Spk in Power Pole, 22' Lt, Sta. 539+05, Elev. 721.03
- BM.No.6 - "SBolt Hydrant, 19' Rt, Sta. 539+60, Elev. 723.19
- BM.No.7 - Spk in 28" Box Elder, 20' Rt, Sta. 543+13, Elev. 721.72
- BM.No.8 - " in walk 2' from Bldg., 29' Rt, Sta. 544+72, Elev. 721.32
- BM.No.9 - " in walk 9' from Edge Bldg., 32' N, Sta. 547+16, Elev. 721.47
- BM.No.10 - Base of Post N.E. Cor., 34' Lt, Sta. 546+66, Elev. 722.58
- BM.No.11 - " in walk to Church, 49' Rt, Sta. 549+69, Elev. 721.73



FULTON COUNTY
 FUL 64 (9.93-10.70)
 FUL 120 (13.65-14.08)



PI. Sta. 557+26.35
 $\Delta = 0^{\circ}42'30''$ Rt

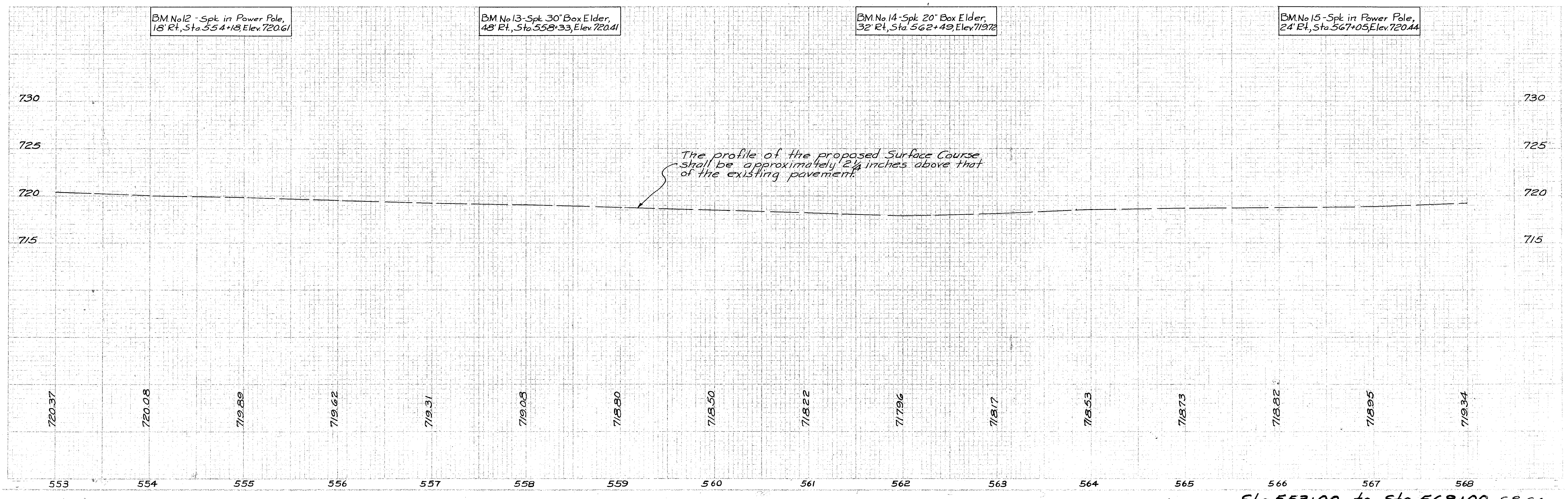


BM No 12 - Spk in Power Pole,
 18' Rt, Sta. 554+18, Elev. 720.61

BM No 13 - Spk 30' Box Elder,
 48' Rt, Sta. 558+33, Elev. 720.41

BM No 14 - Spk 20' Box Elder,
 32' Rt, Sta. 562+49, Elev. 719.72

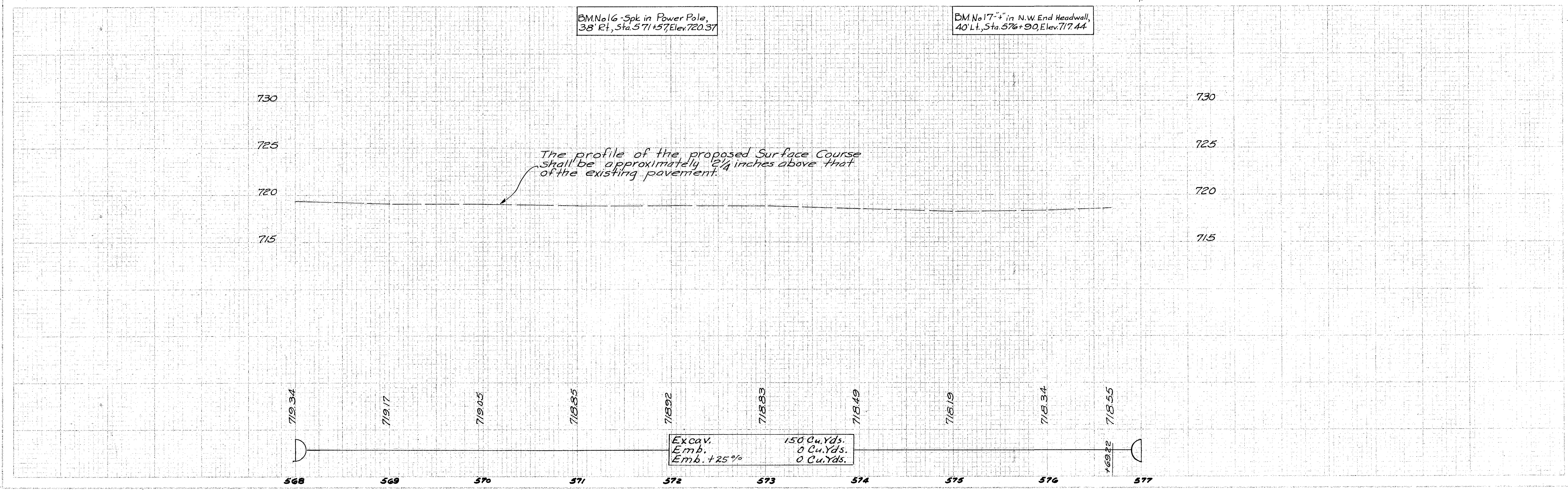
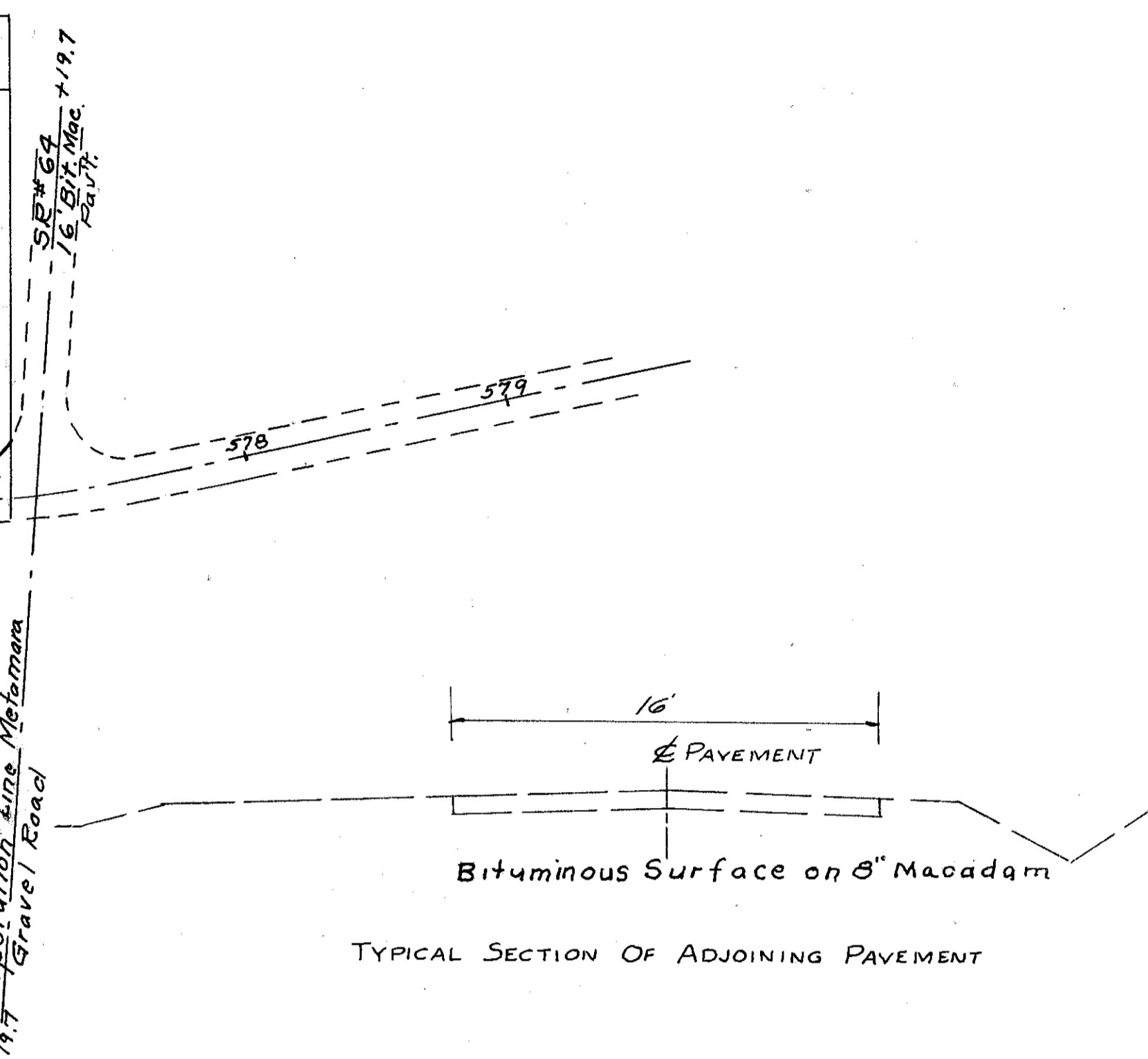
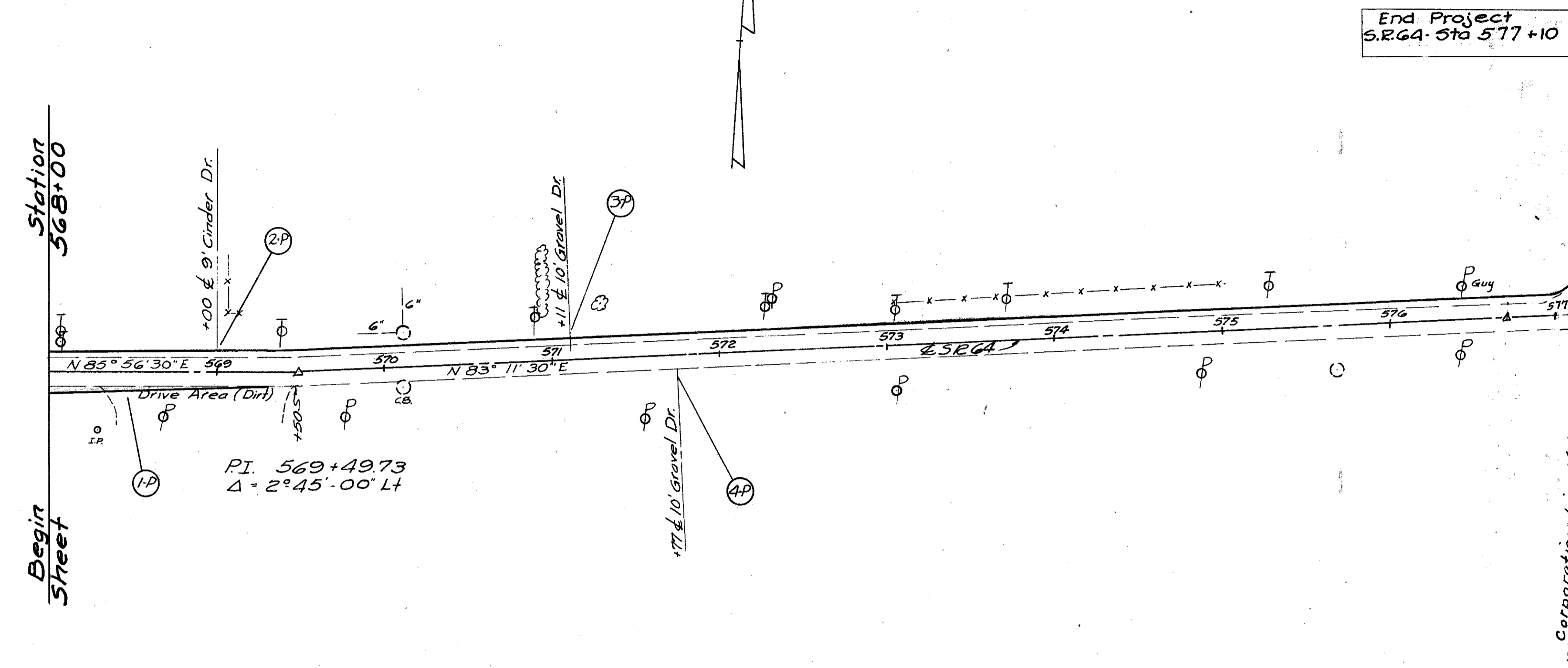
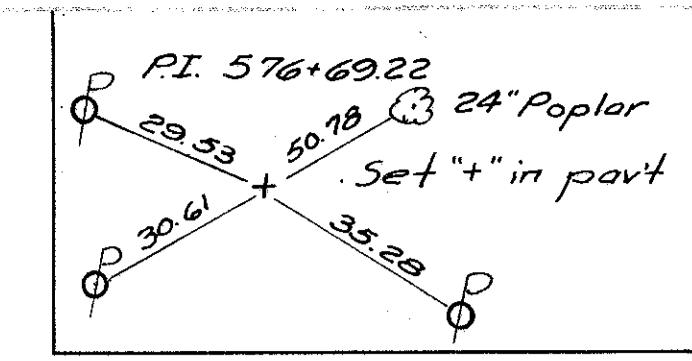
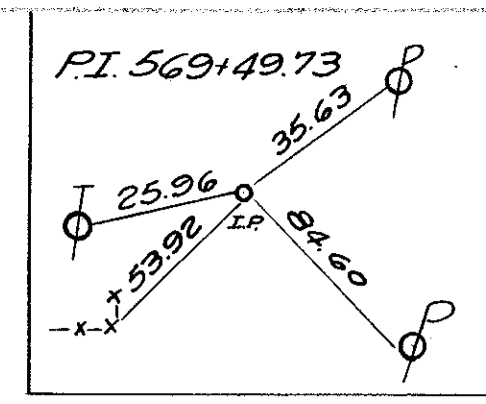
BM No 15 - Spk in Power Pole,
 24' Rt, Sta. 567+05, Elev. 720.44



Sta. 553+00 to Sta. 568+00 S.R. 64

SR#	STATE	PROJECT	SHEET
2	OHIO		13

Fulton County
 Ful-64 (9.93-10.70)
 Ful-120 (13.65-14.08)

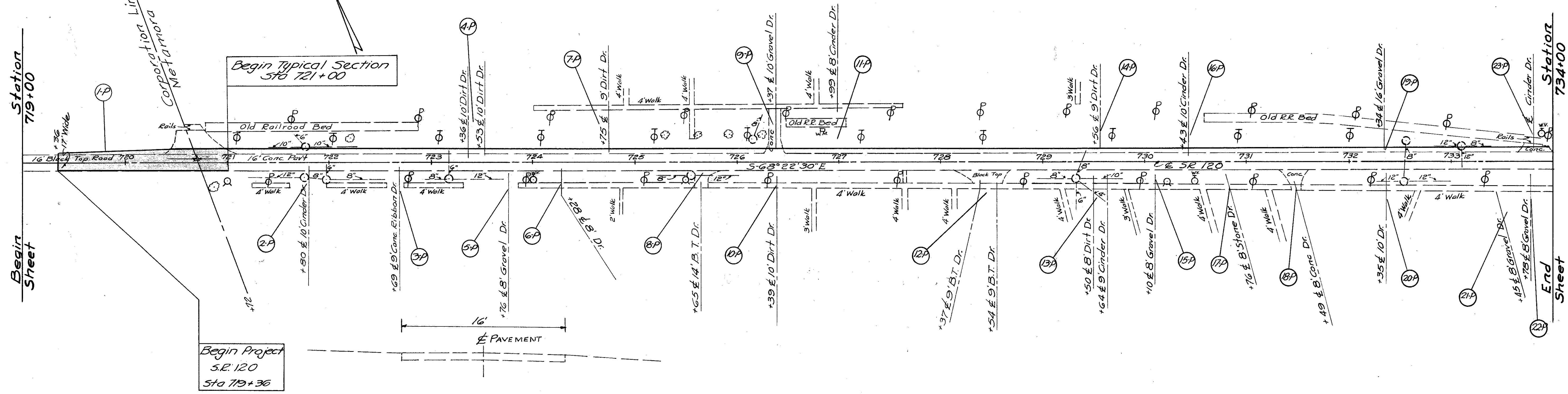
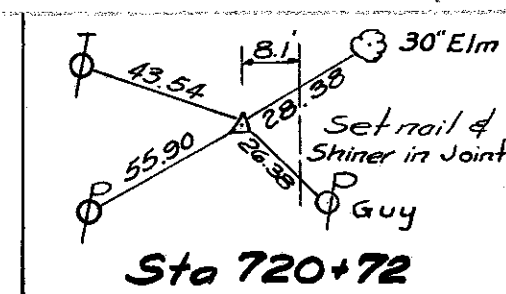


BM No 16 - Spk in Power Pole,
 38' Rt., Sta. 571+57, Elev. 720.37

BM No 17 - " in N.W. End Headwall,
 40' Lt., Sta. 576+90, Elev. 717.44

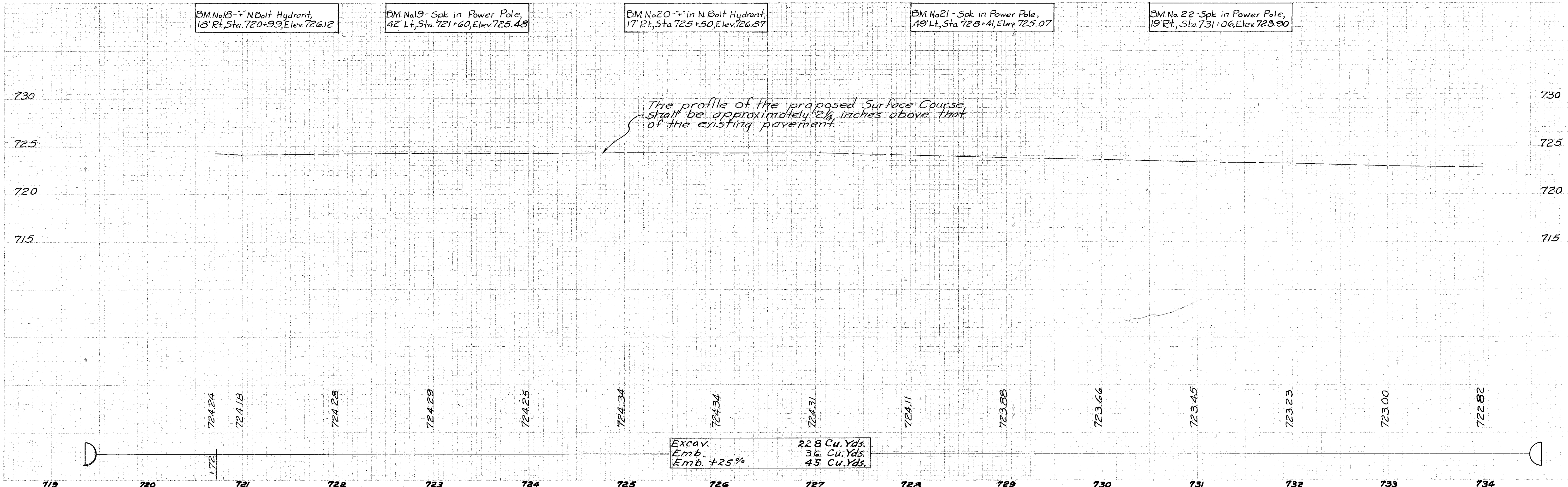
Sta. 568+00 to Sta. 577+00 S.R. 64

Fulton County
 Ful-64-(993-10.70)
 Ful-120-(13.65-14.08)



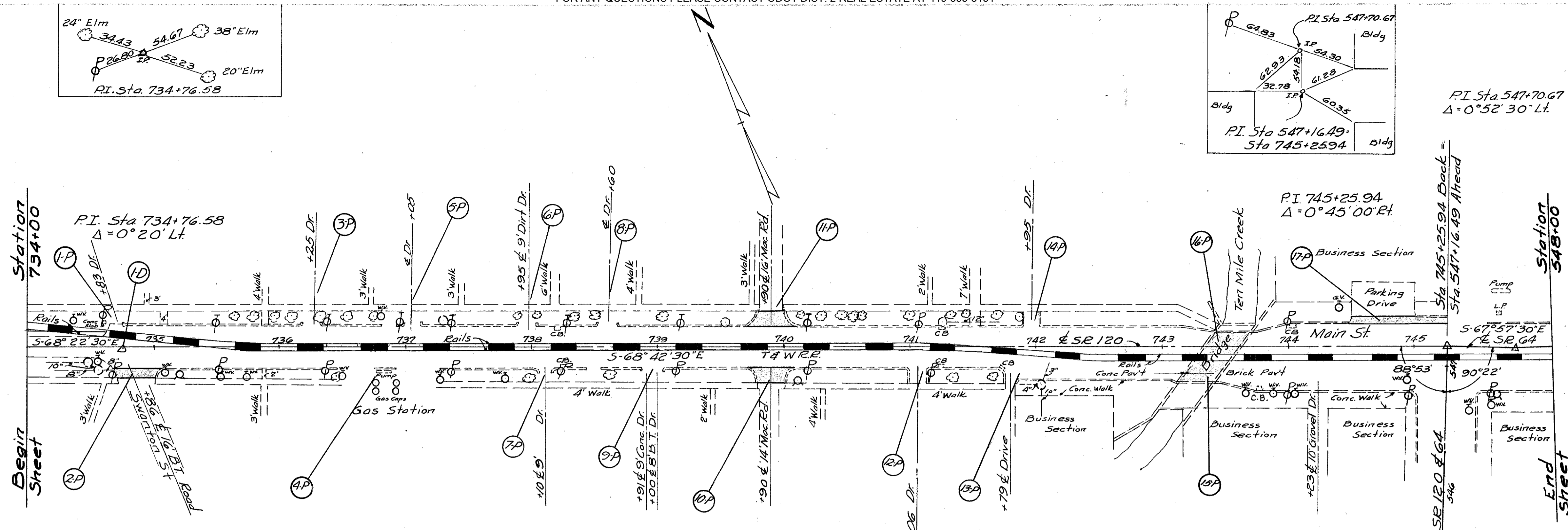
TYPICAL SECTION OF ADJOINING PAVEMENT

- BM No 18 - "N Bolt Hydrant, 18' Rt, Sta. 720+99, Elev. 726.12
- BM No 19 - Spk in Power Pole, 42' Lt, Sta. 721+60, Elev. 725.48
- BM No 20 - "N Bolt Hydrant, 17' Rt, Sta. 725+50, Elev. 726.87
- BM No 21 - Spk in Power Pole, 49' Lt, Sta. 728+41, Elev. 725.07
- BM No 22 - Spk in Power Pole, 19' Rt, Sta. 731+06, Elev. 723.90



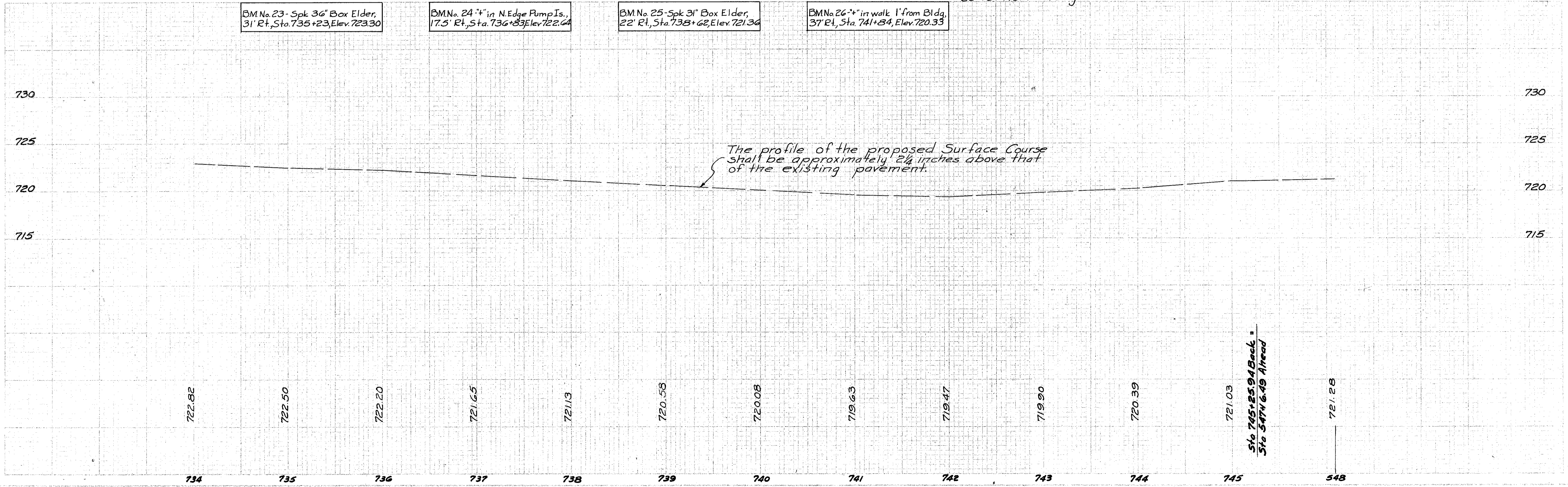
Excav. 228 Cu. Yds.
 Emb. 36 Cu. Yds.
 Emb. +25% 45 Cu. Yds.

Sta. 719+00 to Sta. 734+00 SR 120



Data on Existing Structure
 Sta 743+45
 Bridge No: Fu 120-140 B
 Abutments: Concrete & Stone Masonry
 Superstructure: Concrete beam, 4-24in I-beams Under
 E. L. portion
 Span: 32 ft
 Roadway: 39 ft
 Skew: 35° L.F.
 Condition: Very Poor

- BM No 23 - Spk 36" Box Elder, 31' Rt, Sta. 735+23, Elev. 723.30
- BM No 24 - 4" in N. Edge Pump Is., 17.5' Rt, Sta. 736+83, Elev. 722.64
- BM No 25 - Spk 31" Box Elder, 22' Rt, Sta. 738+62, Elev. 721.36
- BM No 26 - 4" in walk 1' from Bldg, 37' Rt, Sta. 741+84, Elev. 720.33



Sta 745+25.94 Back =
 Sta 547+16.49 Ahead