

I.C.H. No. 300 Sec C-1  
Fulton County

# STATE HIGHWAY DEPARTMENT OF OHIO BUREAU OF CONSTRUCTION SEC C-1-SWANTON-METAMORA ROAD

I.C.H. NO. 300

PET. NO. 3281.

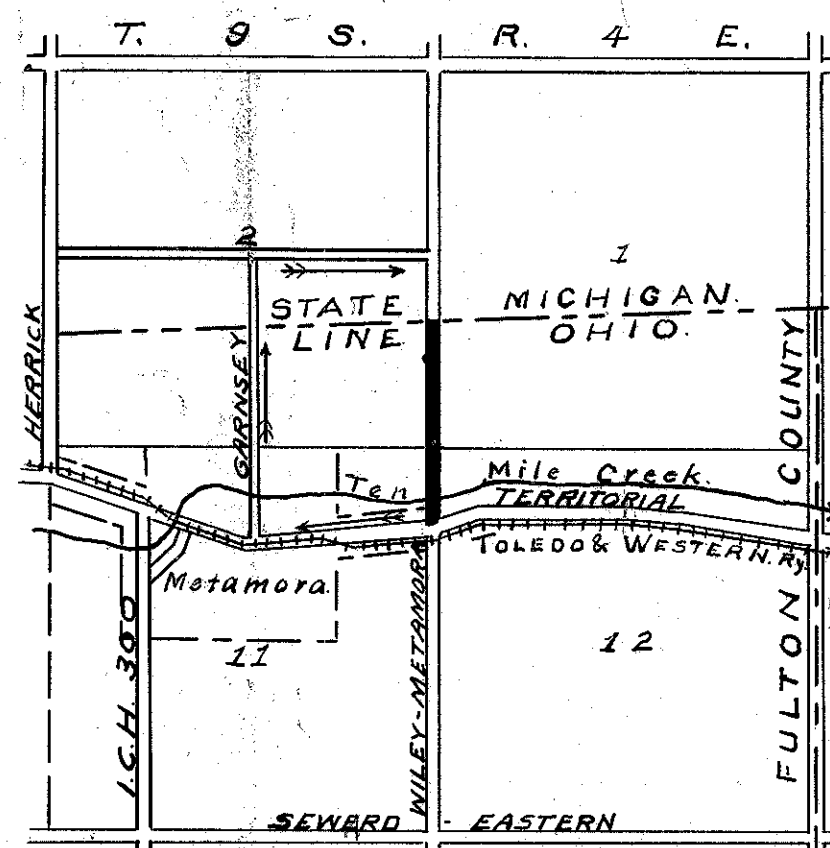
## FULTON COUNTY

### AMBOY TOWNSHIP

1918

#### INDEX

|             |   |
|-------------|---|
| Sheet No. 1 | Title page                                |
| " " 2       | Plan and Profile Sta. 0+00 to Sta 27+44.6 |
| " " 3       | Cross Sections                            |
| " " 3       | Typical Section & Plan of Approaches      |



#### LOCATION PLAN

SCALE - 2" = 1 mile

PORTION TO BE IMPROVED **—————**

DETOURS **→**

#### CONVENTIONAL SIGNS

- State Line
- Village Line
- County Line
- Section Line
- Center Line
- Fence Line
- Telephone or Telegraph
- Electric Railroad
- Trees & Stumps

#### SCALES

- Plan 1" = 100'
- Profile (Vertical) 1" = 10'
- Profile (Horizontal) 1" = 100'
- Cross Sections 1" = 5'

Approved: C. P. Weber  
Date Aug. 29, 1918. County Surveyor.

We, the Commissioners of Fulton County hereby approve these plans and certify that the right-of-way is available for the construction of the above highway.

Signed: Blanch Amundson Pres.  
C. O. Spring.  
Albert Odger  
Date Aug. 29, '18. County Commissioners.



I hereby approve these plans and declare that the making of this improvement will require the closing to traffic of the highway and that detours will be provided as shown on plan.

Approved: D. W. Seitz  
Date 8-29-18 Division Engineer.

Approved: A. D. Jennings  
Date 2-18-19 Chief Highway Engineer.

Approved: Clinton C. ...  
Date 2-18-19 State Highway Commissioner.

File # 443

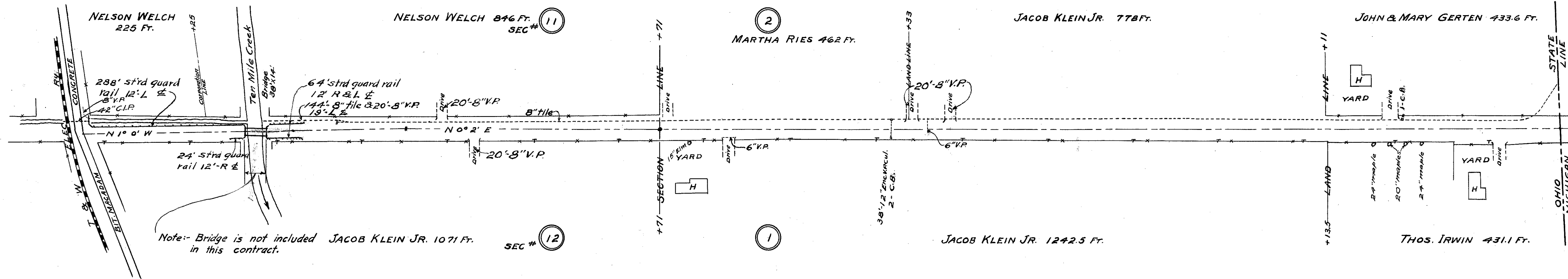
Spike on  $\frac{1}{4}$  at Sta. 0+00-6" E. Sec. line  
X at angle in con. wall 18.85' N.W.  
gas pipe in end con. street 10.75' S.W.

Angle at Sta. 6+00  
Stake on  $\frac{1}{4}$ .

Stone Sec. cor. Sta. 10+71  
 $\frac{3}{4}$ " gas pipe 35' E.  
 $\frac{3}{4}$ " " " 35' W.

gas pipe on  $\frac{1}{4}$  Sta. 27+44.6  
State line post 45 23'6" E.

I.C.H. No. 300 Sec. C-1  
Fulton County



Note:- Bridge is not included in this contract.

NOTE:- Where Vit. pipe are placed at drives they shall be laid to line & grade of the open ditch. There shall not be any ditch made at drives or yards. Vit. pipe shall be used where tile outlet into an open ditch.

| STATIONS   | 0 | 1 | 2 | 3 | 4 | 5   | 6 | 7 | 8 | 9 | 10 | 11   | 12 | 13 | 14 | 15 | 16 | 17 | 18 | 19 | 20 | 21 | 22 | 23 | 24 | 25 | 26 | 27+44.6 |  |  |  |  |  |  |  |
|--|---|---|---|---|---|---|---|---|---|---|----|--|----|----|----|----|----|----|----|----|----|----|----|----|----|----|----|---------|--|--|--|--|--|--|--|
| B.M. on X on concrete wall 17' L.<br>Sta. 0+12 Eleva. 719.00 |   |   |   |   |   | B.M. on sp. in top of stump 26' L.<br>Sta. 7+27 Eleva. 716.29 |   |   |   |   |    | B.M. on sp. in elm tree 34' R.<br>Sta. 10+70 Eleva. 720.99 |    |    |    |    |    |    |    |    |    |    |    |    |    |    |    |         |  |  |  |  |  |  |  |
|  |   |   |   |   |   |   |   |   |   |   |    |  |    |    |    |    |    |    |    |    |    |    |    |    |    |    |    |         |  |  |  |  |  |  |  |
|  |   |   |   |   |   |   |   |   |   |   |    |  |    |    |    |    |    |    |    |    |    |    |    |    |    |    |    |         |  |  |  |  |  |  |  |
|  |   |   |   |   |   |   |   |   |   |   |    |  |    |    |    |    |    |    |    |    |    |    |    |    |    |    |    |         |  |  |  |  |  |  |  |
|  |   |   |   |   |   |   |   |   |   |   |    |  |    |    |    |    |    |    |    |    |    |    |    |    |    |    |    |         |  |  |  |  |  |  |  |
|  |   |   |   |   |   |   |   |   |   |   |    |  |    |    |    |    |    |    |    |    |    |    |    |    |    |    |    |         |  |  |  |  |  |  |  |
|  |   |   |   |   |   |   |   |   |   |   |    |  |    |    |    |    |    |    |    |    |    |    |    |    |    |    |    |         |  |  |  |  |  |  |  |
|  |   |   |   |   |   |   |   |   |   |   |    |  |    |    |    |    |    |    |    |    |    |    |    |    |    |    |    |         |  |  |  |  |  |  |  |
|  |   |   |   |   |   |   |   |   |   |   |    |  |    |    |    |    |    |    |    |    |    |    |    |    |    |    |    |         |  |  |  |  |  |  |  |
|  |   |   |   |   |   |   |   |   |   |   |    |  |    |    |    |    |    |    |    |    |    |    |    |    |    |    |    |         |  |  |  |  |  |  |  |
|  |   |   |   |   |   |   |   |   |   |   |    |  |    |    |    |    |    |    |    |    |    |    |    |    |    |    |    |         |  |  |  |  |  |  |  |
|  |   |   |   |   |   |   |   |   |   |   |    |  |    |    |    |    |    |    |    |    |    |    |    |    |    |    |    |         |  |  |  |  |  |  |  |
|  |   |   |   |   |   |   |   |   |   |   |    |  |    |    |    |    |    |    |    |    |    |    |    |    |    |    |    |         |  |  |  |  |  |  |  |
|  |   |   |   |   |   |   |   |   |   |   |    |  |    |    |    |    |    |    |    |    |    |    |    |    |    |    |    |         |  |  |  |  |  |  |  |
|  |   |   |   |   |   |   |   |   |   |   |    |  |    |    |    |    |    |    |    |    |    |    |    |    |    |    |    |         |  |  |  |  |  |  |  |

NOTE:-  
From sta. 3+40 to sta 6+00 to be Bit. Macadam surface (Sec. 6.1-A.1. Foundation to be 5 1/2" center & 3 1/2" sides. Top course to be 2 1/2".

