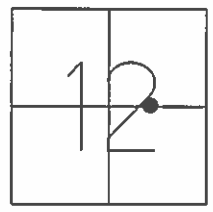


O.D.O.T. DISTRICT 2 SURVEY OFFICE (USE ONLY)

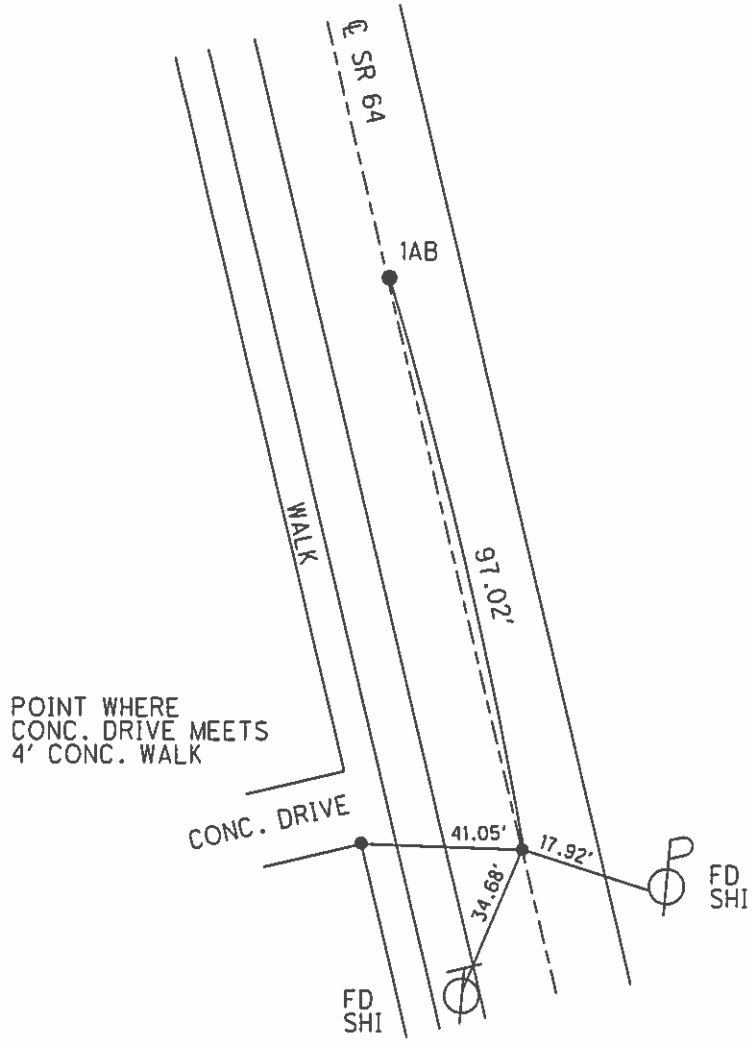
PERSONNEL _____ REFERENCE NO. 1 A SHEET 1 OF 22

NOTES RHOADES DATE 7-26-16 ROUTE SR 64
 H.C. O' DONNELL WEATHER SUNNY COUNTY FULTON
 R.C. KEFFER TEMP. 72° TOWNSHIP SWAN CREEK
 _____ SECTION 12
 _____ T 7 N R 8 E

TYPE MONUMENT MAG/WASHER
 ON SURFACE - ~~BELOW~~ ON
 LEFT - Q PAV'T - ~~RIGHT~~ 0.2'
 _____ TO _____ EDGE PAVEMENT
 S.L.M. 19+68
 GRID: NOTHING: 700991.674 EASTING: 1588790.534



RECORD:
 FD P.K. NAIL
 ON SURFACE
 1988
 SET MAG/WASHER
 9/23/03, MC
 FD MAG/WASHER
 REFA1
 7/26/16, JFO
 SET MAG/WASHER
 NEWREFA1
 11/15/16, JFO



O.D.O.T. DISTRICT 2 SURVEY OFFICE

PERSONNEL _____

REFERENCE NO. 1-A

SHEET 1 OF 18

NOTES CANTERBURY

H.C. NUHFER

R.C. BRUMBAUGH

DATE 8-13-03

WEATHER FAIR

TEMP. +78°

ROUTE SR64

COUNTY Fulton

TOWNSHIP Swan Creek

SECTION 12

T. 7 N. R. 8 E.

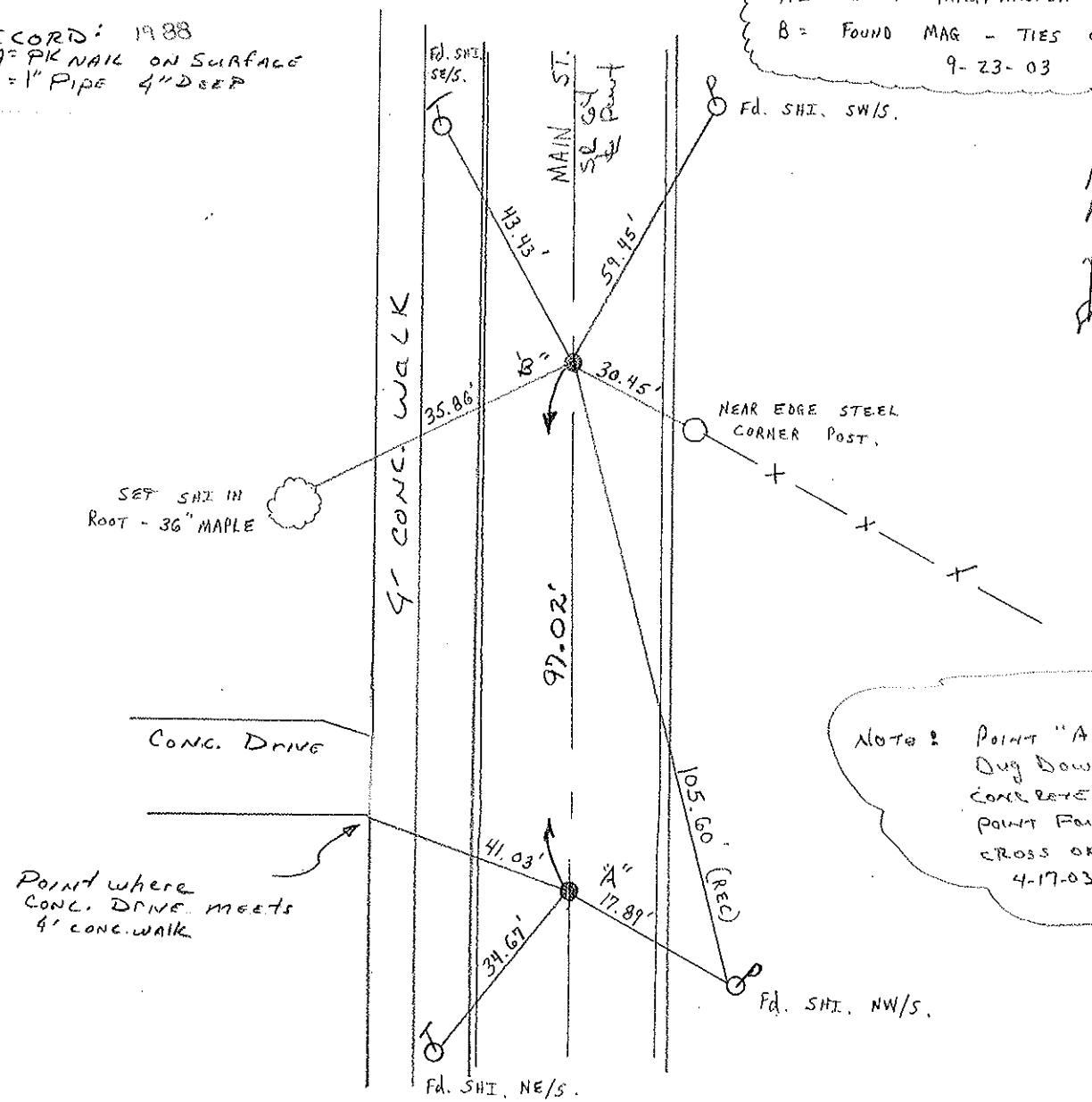
TYPE MONUMENT "A" P.K. NAIL "B" 1 1/2" I. PIPE
 ON SURFACE - BELOW BELOW 2" DOWN
 LEFT - & PAV'T. - RIGHT 0.2' LT. 0.3' LT &
 _____ TO _____ EDGE PAVEMENT
 S.L.M. "A" = 19+68 "B" = 20+65

Swanton	12
CO RP.	



RECORD: 1988
 A = PK NAIL ON SURFACE
 B = 1" PIPE 4" DEEP

A = RESET MAG/WASHER
 B = FOUND MAG - TIES CHECKED
 9-23-03



NOTE: POINT "A"
 Dug Down to
 CONC. BASE POINT, NO
 POINT FOUND, TIES
 CROSS OK.
 4-17-03

Resurveyed 2003

O.D.O.T. DISTRICT 2 SURVEY OFFICE

PERSONNEL

REFERENCE NO. 1A

SHEET 1 OF 16

NOTES 1. Stone

H.C. D. Curtis

R.C. J. Houscholder

DATE 1 April 88

WEATHER Cloudy

TEMP. 47°

ROUTE SR#64

COUNTY Fulton

TOWNSHIP Swan Creek

SECTION _____

T _____ R _____

TYPE MONUMENT "A" = PK Nail
"B" = 1" Pipe

ON SURFACE - BELOW A = surface
B = 4" deep

LEFT- & PAV'T. - RIGHT _____

_____ TO _____ EDGE PAVEMENT

S.L.M. "A" = 19+68 "B" = 20+65

SWANTON	
CO. REP.	



(A) SET P.K. NAIL TO SURFACE
7-18-88

(B) SET SM. R.R. SPK. TO SURFACE
7-18-88

