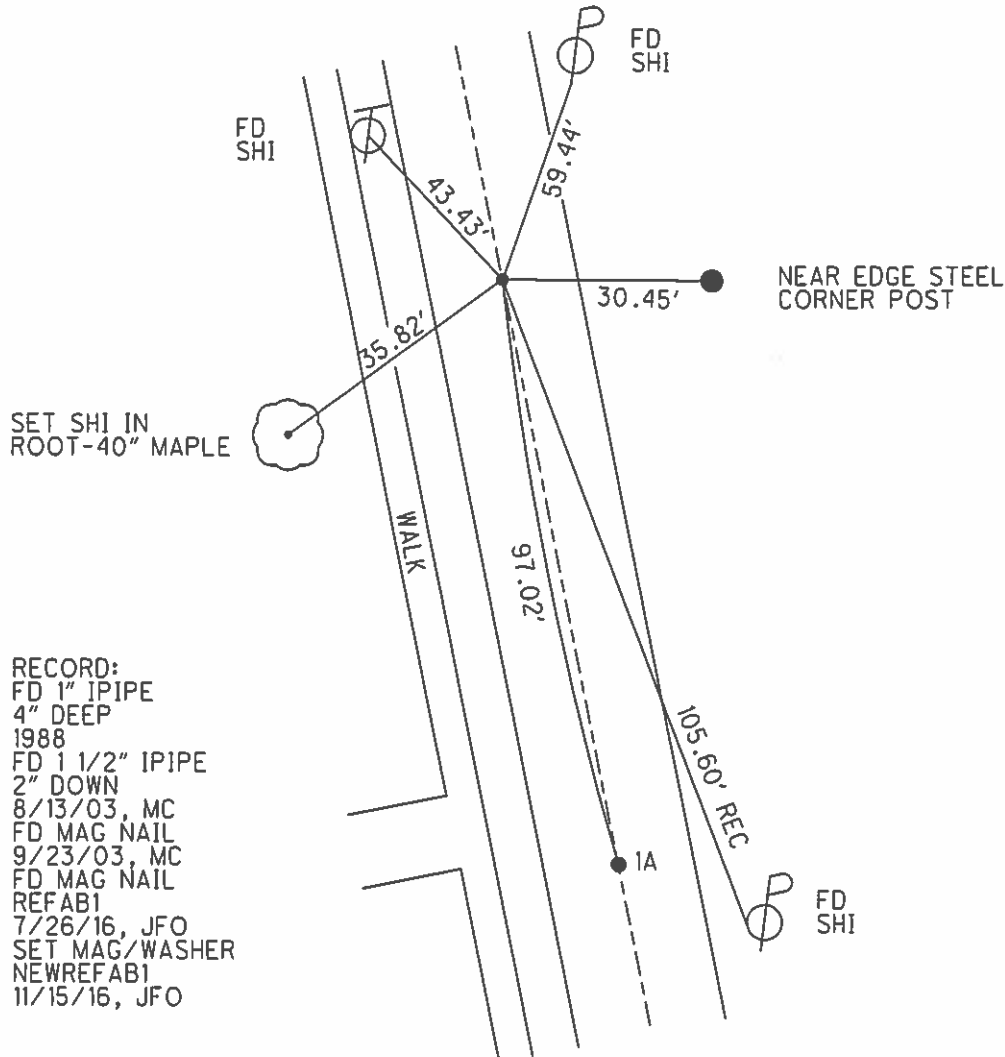
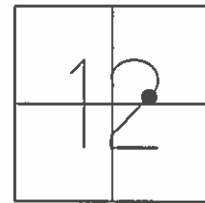


O.D.O.T. DISTRICT 2 SURVEY OFFICE (USE ONLY)

PERSONNEL _____ REFERENCE NO. 1 AB SHEET 2 OF 22
 NOTES RHOADES DATE 7-26-16 ROUTE SR 64
 H.C. O' DONNELL WEATHER SUNNY COUNTY FULTON
 R.C. KEFFER TEMP. 72° TOWNSHIP SWAN CREEK
 _____ SECTION 12
 _____ T 7 N R 8 E

TYPE MONUMENT MAG NAIL
 ON SURFACE - ~~BELOW~~ ON _____
 LEFT - ☉ PAV'T - ~~RIGHT~~ 0.3'
 _____ TO _____ EDGE PAVEMENT
 S.L.M. 20+65
 GRID: NOTHING: 701085.354 EASTING: 1588765.579



RECORD:
 FD 1" IPIPE
 4" DEEP
 1988
 FD 1 1/2" IPIPE
 2" DOWN
 8/13/03, MC
 FD MAG NAIL
 9/23/03, MC
 FD MAG NAIL
 REFAB1
 7/26/16, JFO
 SET MAG/WASHER
 NEWREFAB1
 11/15/16, JFO