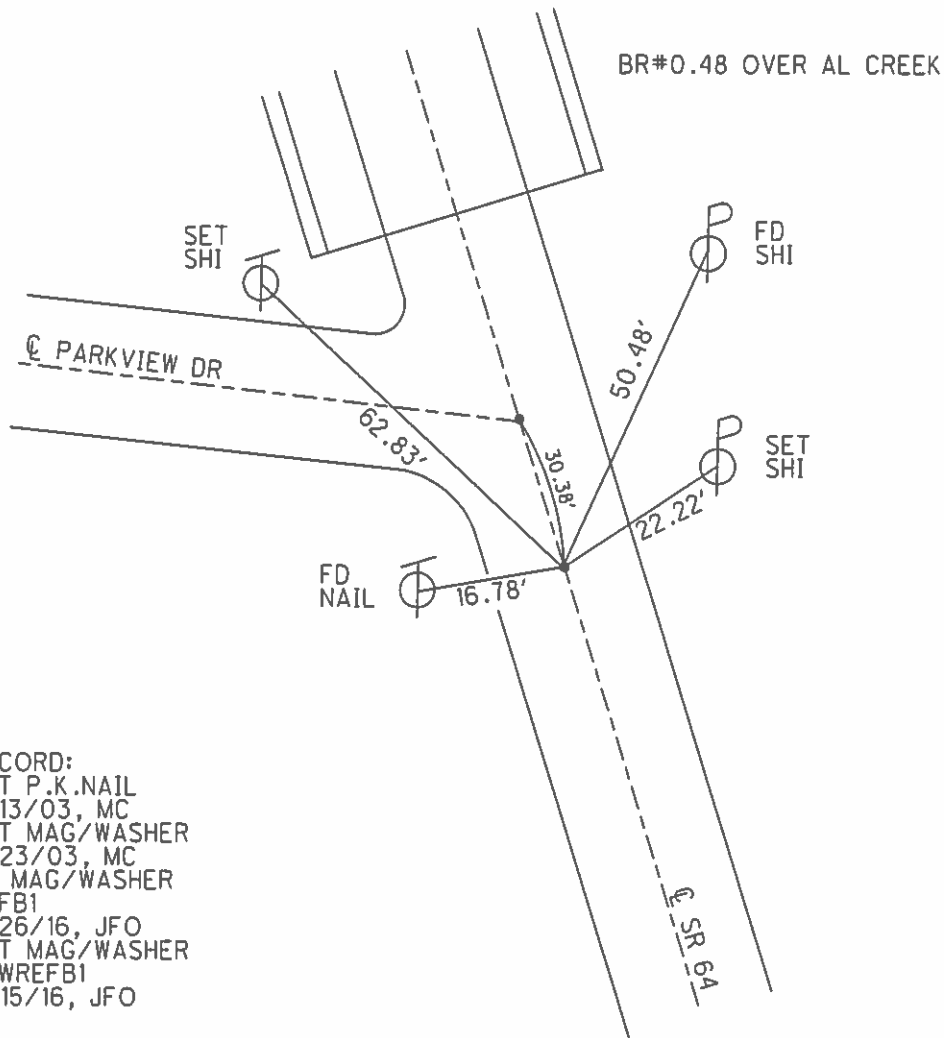
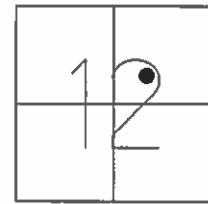


O.D.O.T. DISTRICT 2 SURVEY OFFICE (USE ONLY)

PERSONNEL _____ REFERENCE NO. 1 B SHEET 3 OF 22
 NOTES RHOADES DATE 7-26-16 ROUTE SR 64
 H.C. O' DONNELL WEATHER SUNNY COUNTY FULTON
 R.C. KEFFER TEMP. 72° TOWNSHIP SWAN CREEK
 SECTION 12
 T 7 N R 8 E

TYPE MONUMENT MAG/WASHER
 ON SURFACE - ~~BELOW~~ ON
 LEFT - ☉ PAV'T - RIGHT ON
- TO - EDGE PAVEMENT
 S.L.M. 24+76
 GRID: NOTHING: 701482.479 EASTING: 1588660.283



RECORD:
 SET P.K.NAIL
 8/13/03, MC
 SET MAG/WASHER
 9/23/03, MC
 FD MAG/WASHER
 REFB1
 7/26/16, JFO
 SET MAG/WASHER
 NEWREFB1
 11/15/16, JFO

O.D.O.T. DISTRICT 2 SURVEY OFFICE

PERSONNEL _____

REFERENCE NO. 1-B

SHEET 2 OF 18

NOTES CANTERBURY

H.C. NUHFER

R.C. BRUMBAUGH

DATE 8-13-03

WEATHER FAIR

TEMP. +78°

ROUTE SR64

COUNTY Fulton

TOWNSHIP Swan Creek

SECTION 12

T. 2 N. R. 8 E.

TYPE MONUMENT PK MARKS

ON SURFACE - BELOW SURFACE

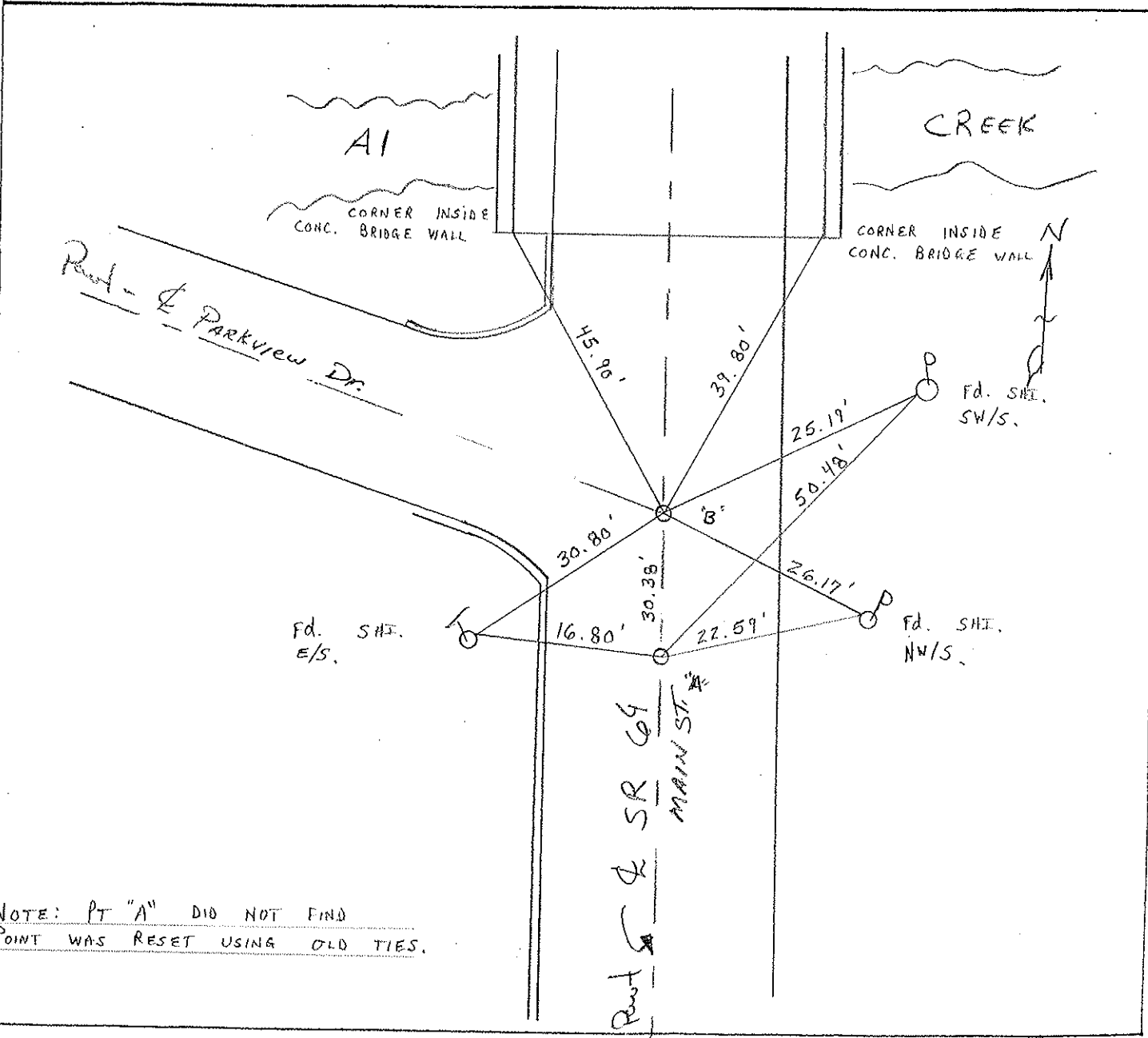
LEFT - ♀ PAV'T. - RIGHT ON ♀

TO EDGE PAVEMENT

S.L.M. "A" = 24+76 "B" = 25+07

RESET MAG/WASHERS
 @ BOTH
 9-23-03
 MC

Swanton	
12	
CORP	



NOTE: PT "A" DID NOT FIND POINT WAS RESET USING OLD TIES.

O.D.O.T. DISTRICT 2 SURVEY OFFICE

PERSONNEL

REFERENCE NO. 1B

SHEET 1-A OF 16

NOTES 1. Stone

H.C. D. Curtis

R.C. J. Houscholder

DATE 6 April 88

WEATHER Cloudy

TEMP. 60°

ROUTE SR #64

COUNTY Fulton

TOWNSHIP Swan Creek

SECTION _____

T _____ R _____

TYPE MONUMENT PK Nails

ON SURFACE - BELOW 1" deep

LEFT- & PAV'T. - RIGHT _____

_____ TO _____ EDGE PAVEMENT

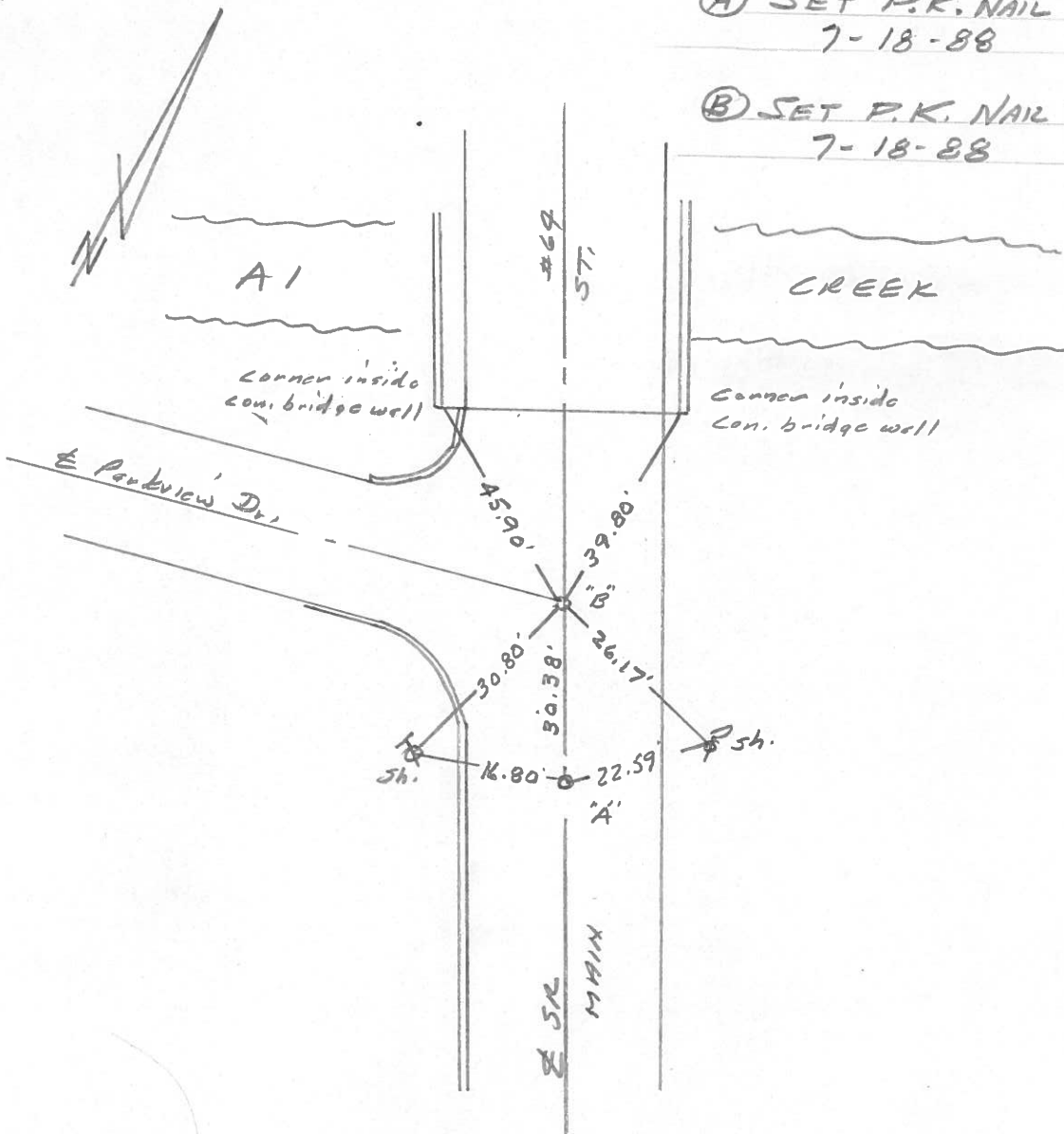
S.L.M. "A" = 24+76 "B" = 25+07

SWANTON	
COMP	



Ⓐ SET P.K. NAIL TO SURFACE
7-18-88

Ⓑ SET P.K. NAIL TO SURFACE
7-18-88



PERSONNEL	TITLE	PERSONNEL	TITLE	COUNTY	DATE	WEATHER	TEMP.
Stone				Fulton	21 March 73	Cool	38°
Michalek				S. R. #64			
Denno				SEC. Swanton			
Curtis							

DESCRIPTION: References to Control Points JOB NO. _____

