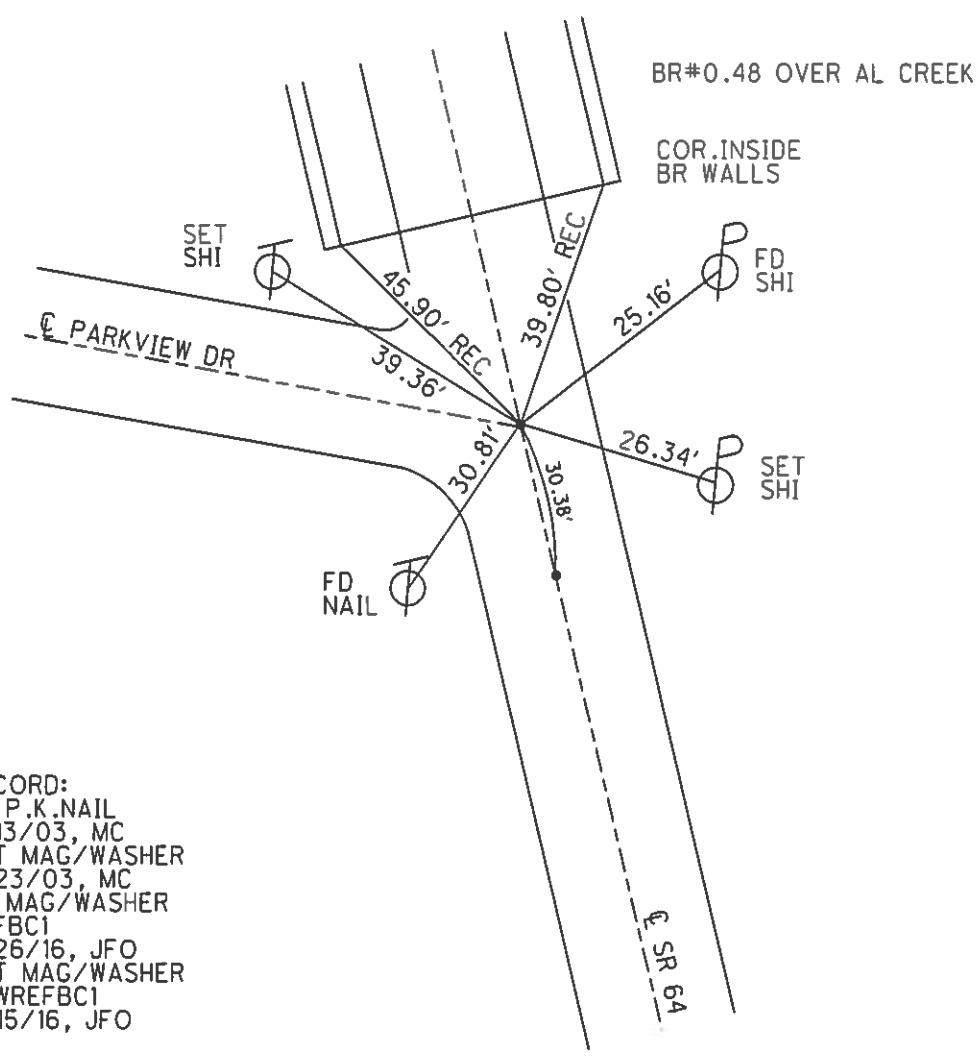
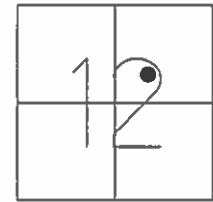


O.D.O.T. DISTRICT 2 SURVEY OFFICE (USE ONLY)

PERSONNEL _____ REFERENCE NO. 1 BC SHEET 4 OF 22
 NOTES RHOADES DATE 7-26-16 ROUTE SR 64
 H.C. O' DONNELL WEATHER SUNNY COUNTY FULTON
 R.C. KEFFER TEMP. 72° TOWNSHIP SWAN CREEK
 _____ SECTION 12
 _____ T 7 N R 8 E

TYPE MONUMENT MAG/WASHER
 ON SURFACE - ~~BELOW~~ ON _____
~~LEFT~~ - ☉ PAV'T - RIGHT 0.5'
 - TO - EDGE PAVEMENT
 S.L.M. 25+07
 GRID: NOTHING: 701511.908 EASTING: 1588652.684



RECORD:
 FD P.K.NAIL
 8/13/03, MC
 SET MAG/WASHER
 9/23/03, MC
 FD MAG/WASHER
 REFBC1
 7/26/16, JFO
 SET MAG/WASHER
 NEWREFBC1
 11/15/16, JFO