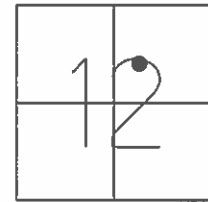


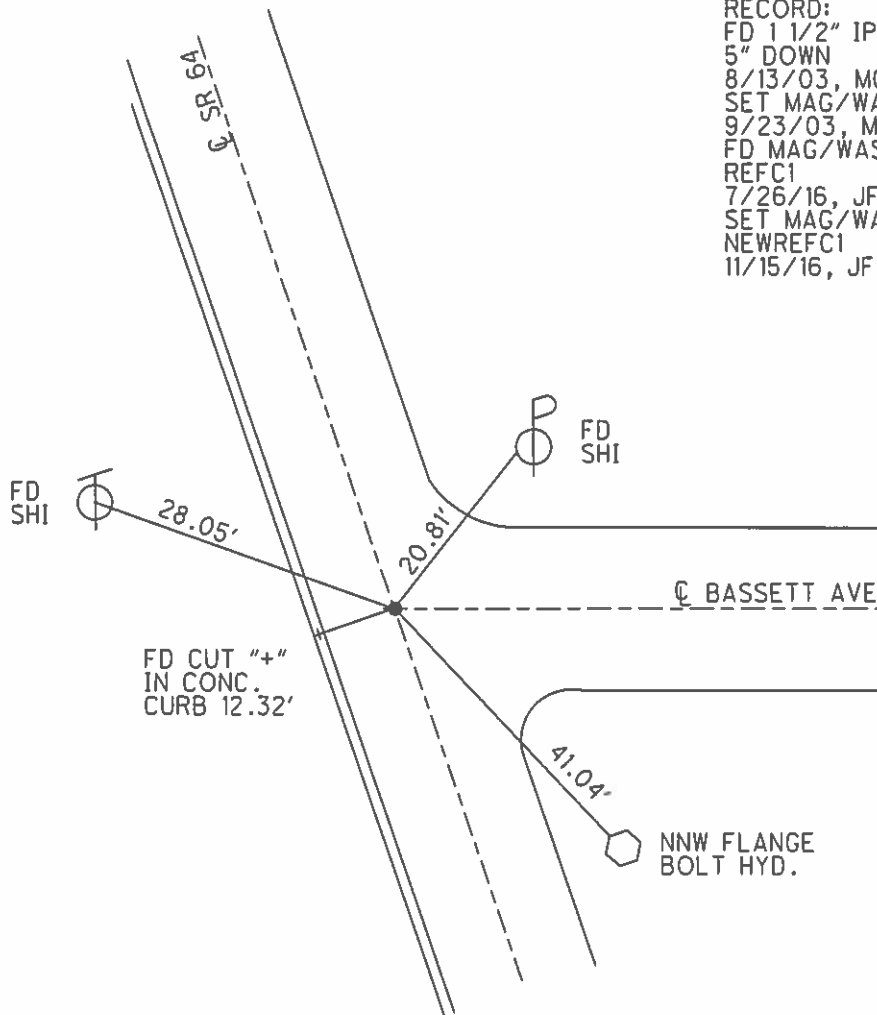
O.D.O.T. DISTRICT 2 SURVEY OFFICE (USE ONLY)

PERSONNEL	REFERENCE NO.	<u>1C</u>	SHEET	<u>5</u>	OF	<u>22</u>
NOTES	<u>RHOADES</u>	DATE	<u>7-26-16</u>	ROUTE	<u>SR 64</u>	
H.C.	<u>O' DONNELL</u>	WEATHER	<u>SUNNY</u>	COUNTY	<u>FULTON</u>	
R.C.	<u>KEFFER</u>	TEMP.	<u>72°</u>	TOWNSHIP	<u>SWAN CREEK</u>	
				SECTION	<u>12</u>	
				T. <u>7</u> N	R. <u>8</u> E	

TYPE MONUMENT MAG/WASHER
 ON SURFACE - ~~BELOW~~ ON
 LEFT - ☉ PAV'T - RIGHT ON
12.2' TO LT. EDGE PAVEMENT
 S.L.M. 28+99
 GRID: NOTHING: 701890.738 EASTING: 1588552.184



RECORD:
 FD 1 1/2" IPIPE
 5" DOWN
 8/13/03, MC
 SET MAG/WASHER
 9/23/03, MC
 FD MAG/WASHER
 REFC1
 7/26/16, JFO
 SET MAG/WASHER
 NEWREFC1
 11/15/16, JFO



O.D.O.T. DISTRICT 2 SURVEY OFFICE

PERSONNEL

REFERENCE NO. 1-C

SHEET 3 OF 18

NOTES CANTERBURY

H.C. NUFFER

R.C. BRUMBAUGH

DATE 8-13-03

WEATHER FAIR

TEMP. + 78°

ROUTE Co 4

COUNTY Fulton

TOWNSHIP SWAN CREEK

SECTION 12

T 7 N R 8 E

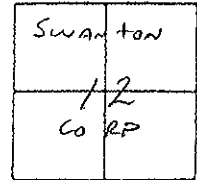
TYPE MONUMENT 1 1/2" I. PIPE

ON SURFACE - BELOW 2" DOWN

LEFT - & PAV'T. - RIGHT ON & BOTH

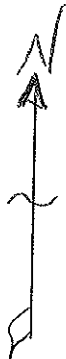
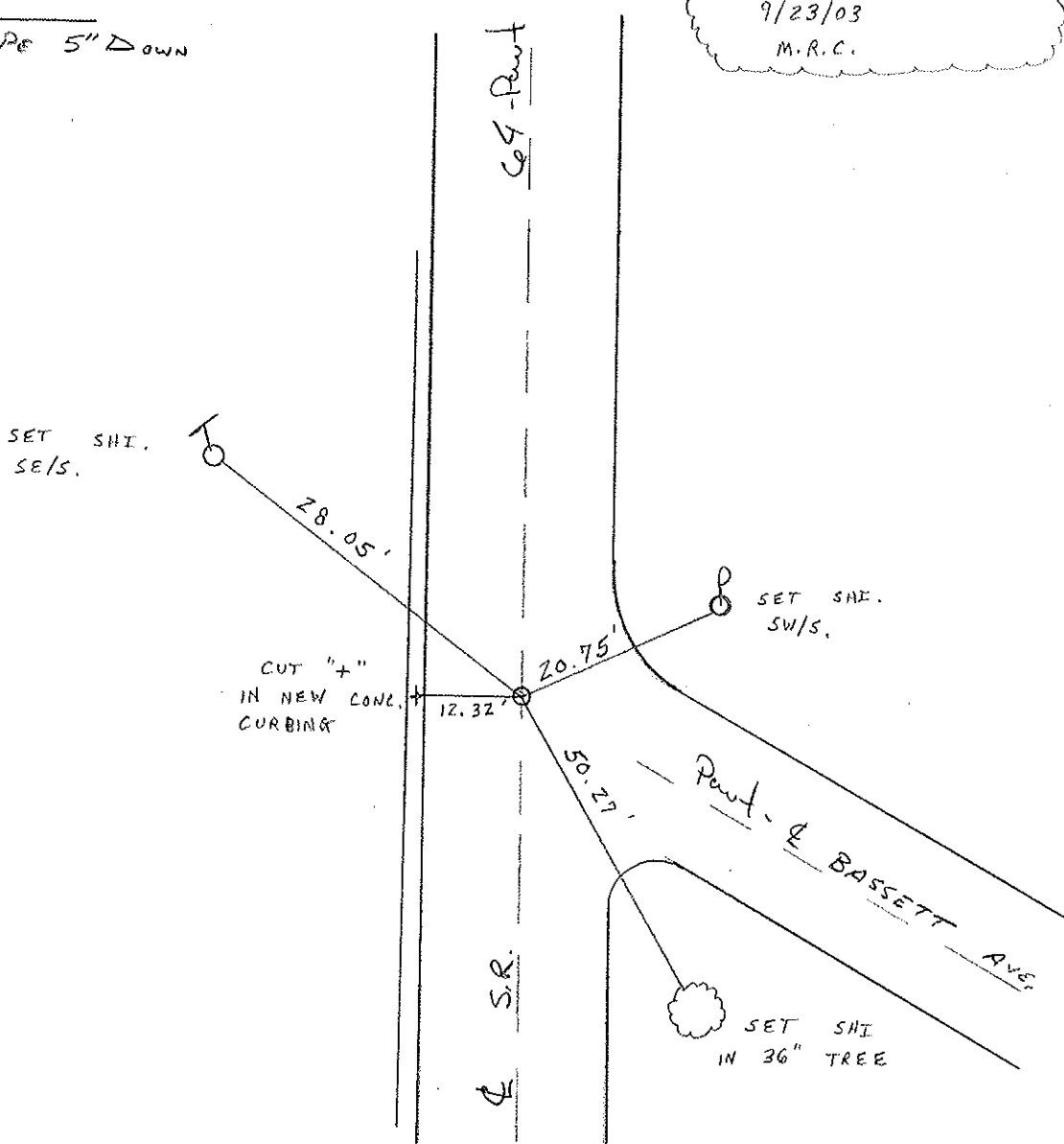
12.2 TO LT. EDGE PAVEMENT

S.L.M. 28 + 99



RESET MAG/WASHER
 9/23/03
 M.R.C.

RECORD
1 1/2" I PIPE 5" DOWN



CUT "+"
 IN NEW CONC.
 CURBING

12.32'

50.27'

SET SHI
 IN 36" TREE

O.D.O.T. DISTRICT 2 SURVEY OFFICE

PERSONNEL

REFERENCE NO. 10

SHEET 1-B OF 16

NOTES I. STONE

H.C. D. CURTIS

R.C. V. HOUSEHOLDER

V. SCHUELER

DATE 4-1-88

WEATHER CLOUDY

TEMP. 60°

ROUTE S.R. #64

COUNTY FULTON

TOWNSHIP SWAN CREEK

SECTION _____

T _____ R _____

TYPE MONUMENT 1 1/2" I. PIPE

ON SURFACE - BELOW 5"

LEFT- & PAV'T. - RIGHT E PAV'T

____ TO ____ EDGE PAVEMENT

S.L.M. 28+99

SWANTON	
CORP.	

