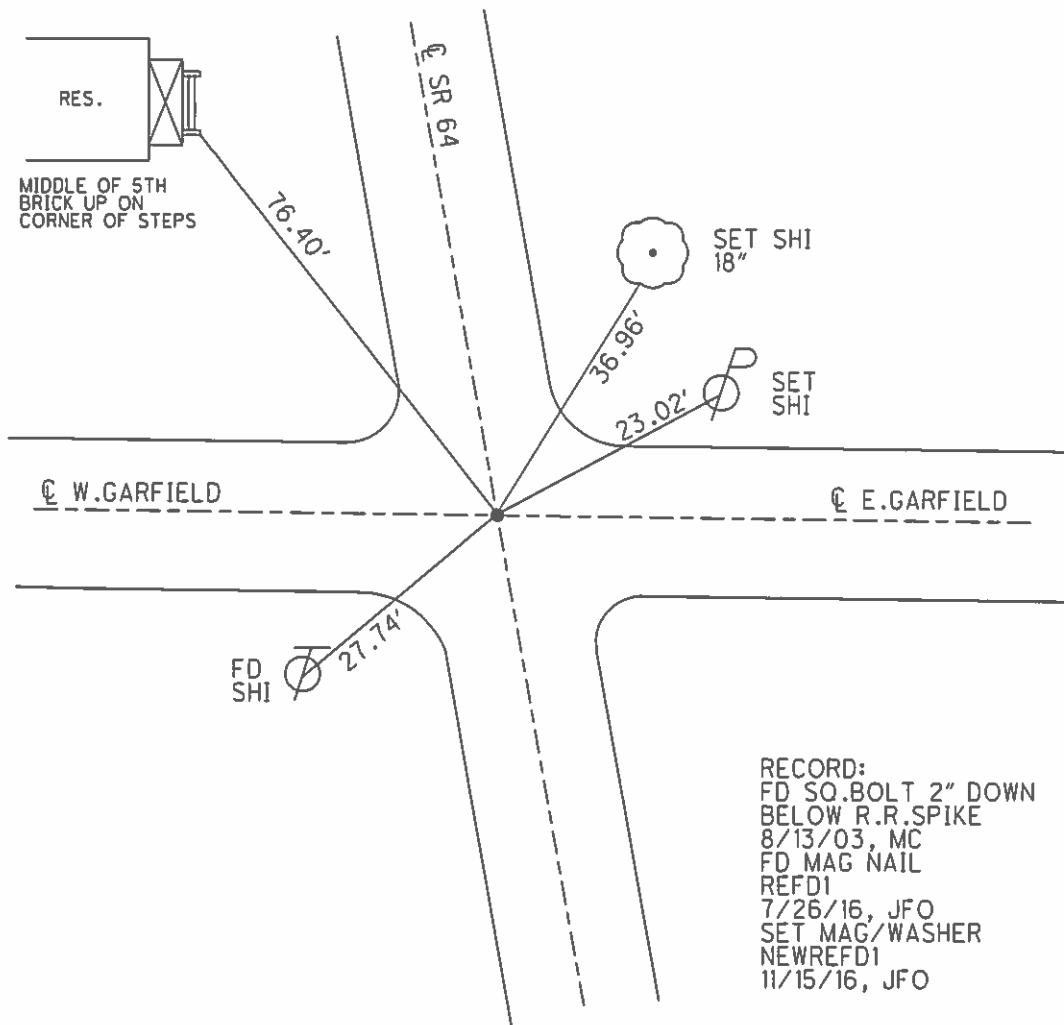
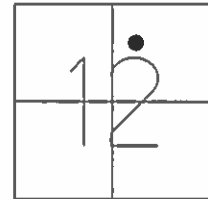


O.D.O.T. DISTRICT 2 SURVEY OFFICE (USE ONLY)

PERSONNEL _____ REFERENCE NO. 1 D SHEET 6 OF 22
 NOTES RHOADES DATE 7-26-16 ROUTE SR 64
 H.C. O' DONNELL WEATHER SUNNY COUNTY FULTON
 R.C. KEFFER TEMP. 72° TOWNSHIP SWAN CREEK
 _____ SECTION 12
 _____ T 7 N R 8 E

TYPE MONUMENT MAG NAIL
 ON SURFACE - ~~BELOW~~ ON _____
~~LEFT~~ - ☉ PAV'T - RIGHT ON _____
 - TO - EDGE PAVEMENT
 S.L.M. 32+26
 GRID: NOTHING: 702208.674 EASTING: 1588472.104



O.D.O.T. DISTRICT 2 SURVEY OFFICE

PERSONNEL _____

REFERENCE NO. 1-D

SHEET 4 OF 18

NOTES CANTERBURY

H.C. NUHFER

R.C. BRUMBAUGH

DATE 8-13-03

WEATHER FAIR

TEMP. +78°

ROUTE SR 64

COUNTY Fulton

TOWNSHIP SWAN CREEK

SECTION 12

T. 7 X R. 8 E

TYPE MONUMENT SQUARE BOLT _____

ON SURFACE - BELOW 2" DOWN _____

LEFT- & PAV'T. - RIGHT _____

_____ TO _____ EDGE PAVEMENT

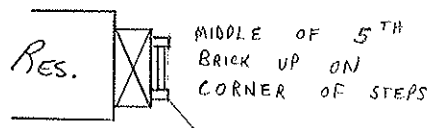
S.L.M. 32 + 26

Swanton	
12	
Co. R.P.	



RECORD:

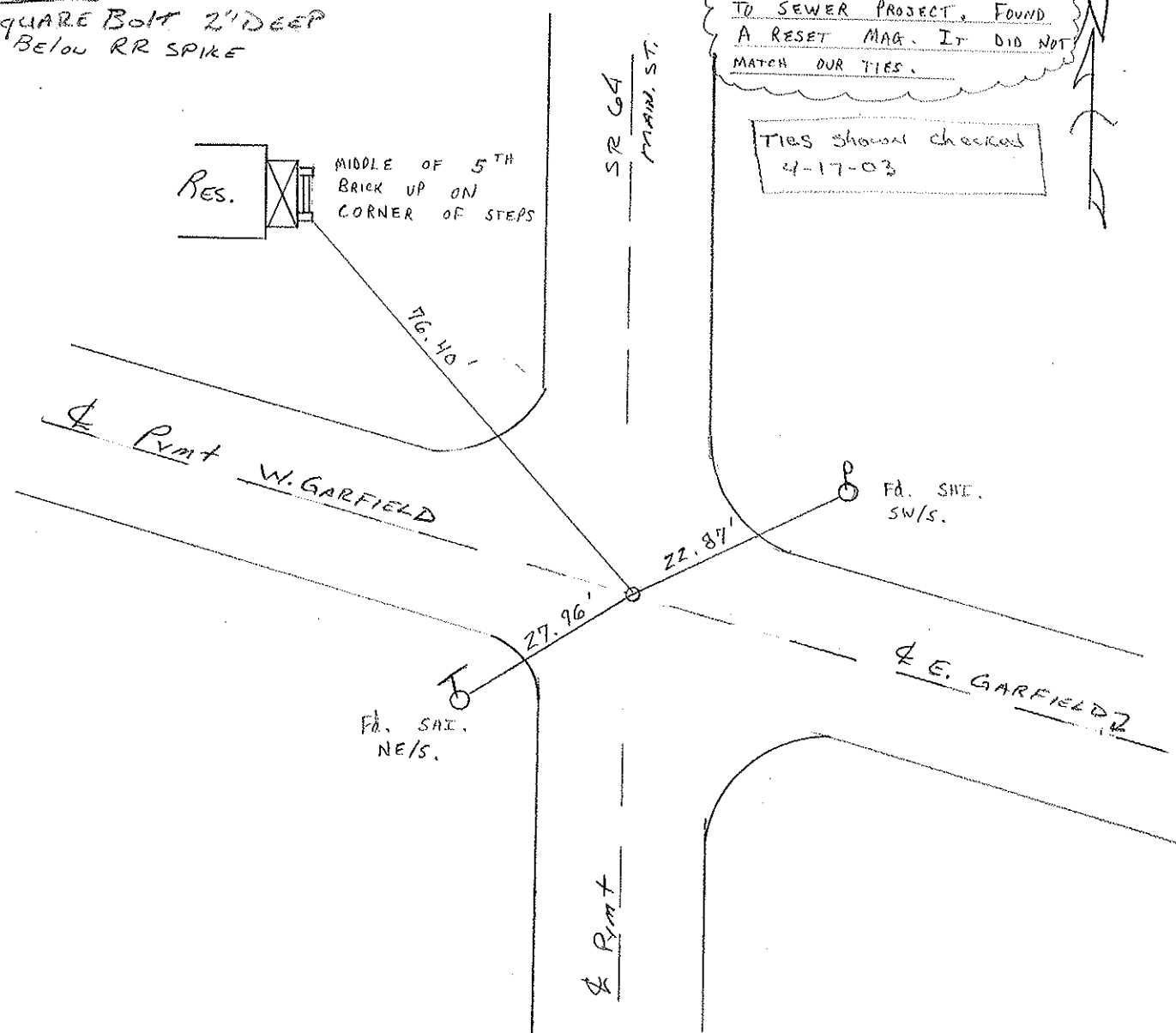
SQUARE BOLT 2" DEEP
BELOW RR SPIKE



MIDDLE OF 5TH
BRICK UP ON
CORNER OF STEPS

NOTE: POINT REMOVED DUE
TO SEWER PROJECT, FOUND
A RESET MAG. IT DID NOT
MATCH OUR TIES.

TIES SHOULD CHECKED
4-17-03



FA. SAE.
NE/S.

FA. SHE.
SW/S.

O.D.O.T. DISTRICT 2 SURVEY OFFICE

PERSONNEL

REFERENCE NO. 1D

SHEET 2 OF 16

NOTES 1. Stone

H.C. D. Curtis

R.C. J. Hauscholder

DATE 1 April 88

WEATHER Cloudy

TEMP. 48°

ROUTE SR #64

COUNTY Fulton

TOWNSHIP Swan Creek

SECTION _____

T _____ R _____

TYPE MONUMENT Square bolt

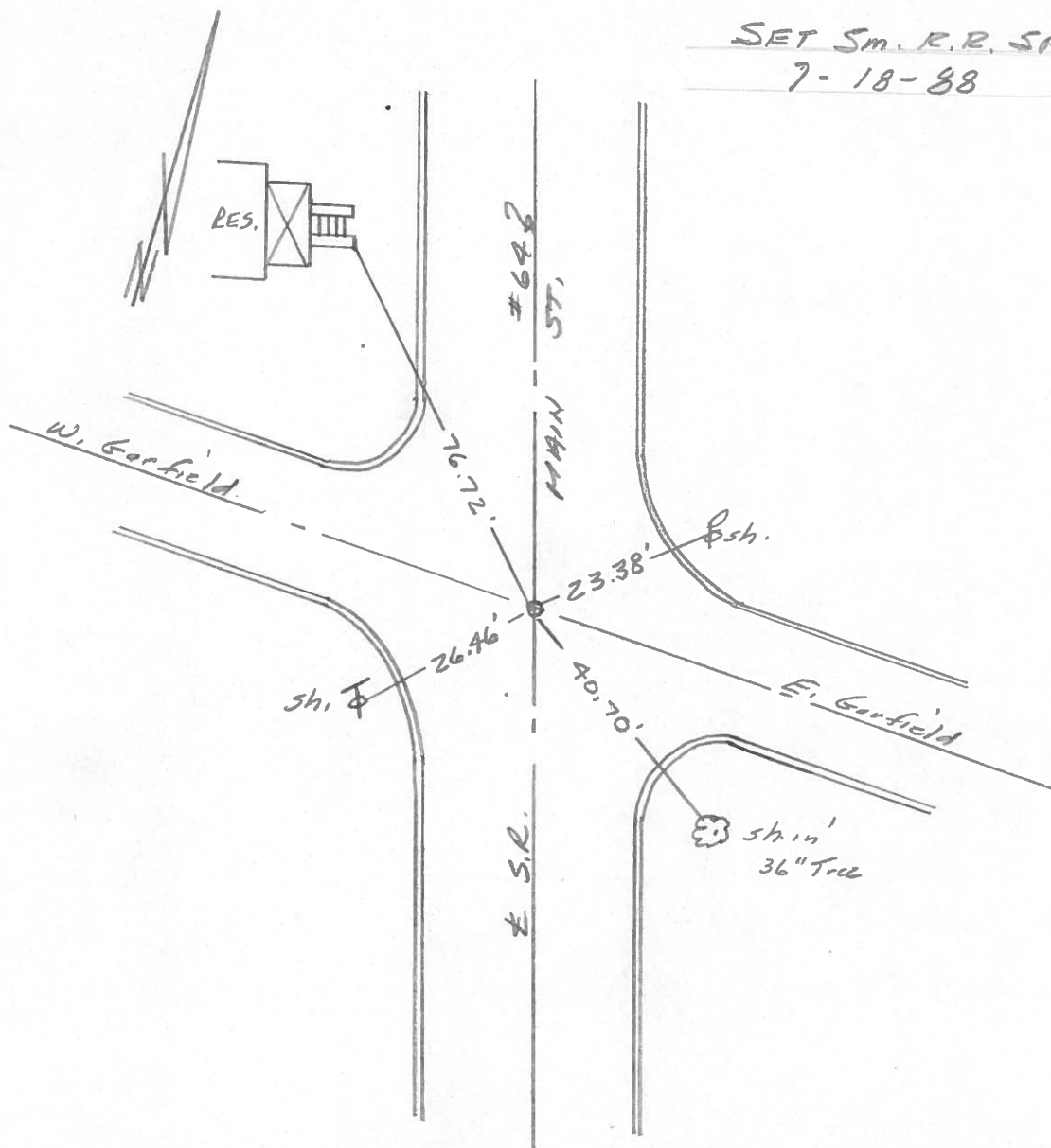
ON SURFACE - BELOW 2" deep

LEFT- & PAV'T. - RIGHT _____

_____ TO _____ EDGE PAVEMENT

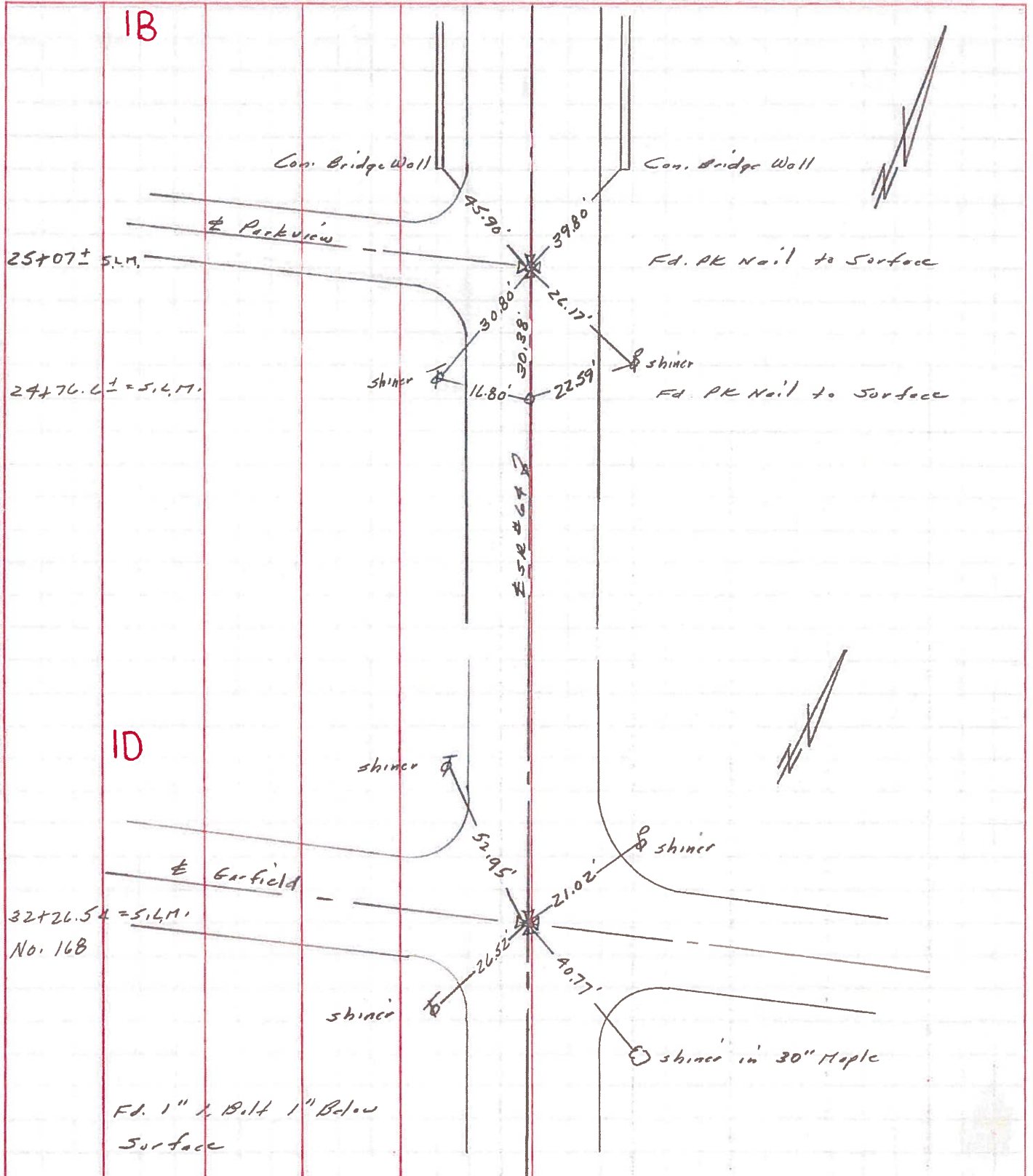
S.L.M. 32+26

SW	ANTON
CO	R.P.



PERSONNEL	TITLE	PERSONNEL	TITLE	COUNTY	DATE
Stone				Fulton	21 March 78
Michaelale				S. R. #67	WEATHER Cool
Denno				SEC. Swanton	TEMP. 38°
Curtis					

DESCRIPTION References to Central Points JOB NO. _____



PERSONNEL	TITLE	PERSONNEL	TITLE	COUNTY	DATE
Denna				Fulton	June, 3, 1966
Curtis				S. R. 64	WEATHER Cloudy
Omey				SEC.	TEMP. 70°
Granata					

DESCRIPTION Monument References SR 64 Swanton JOB NO. _____

