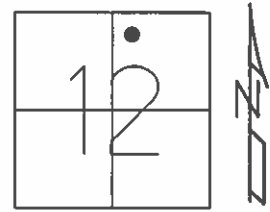


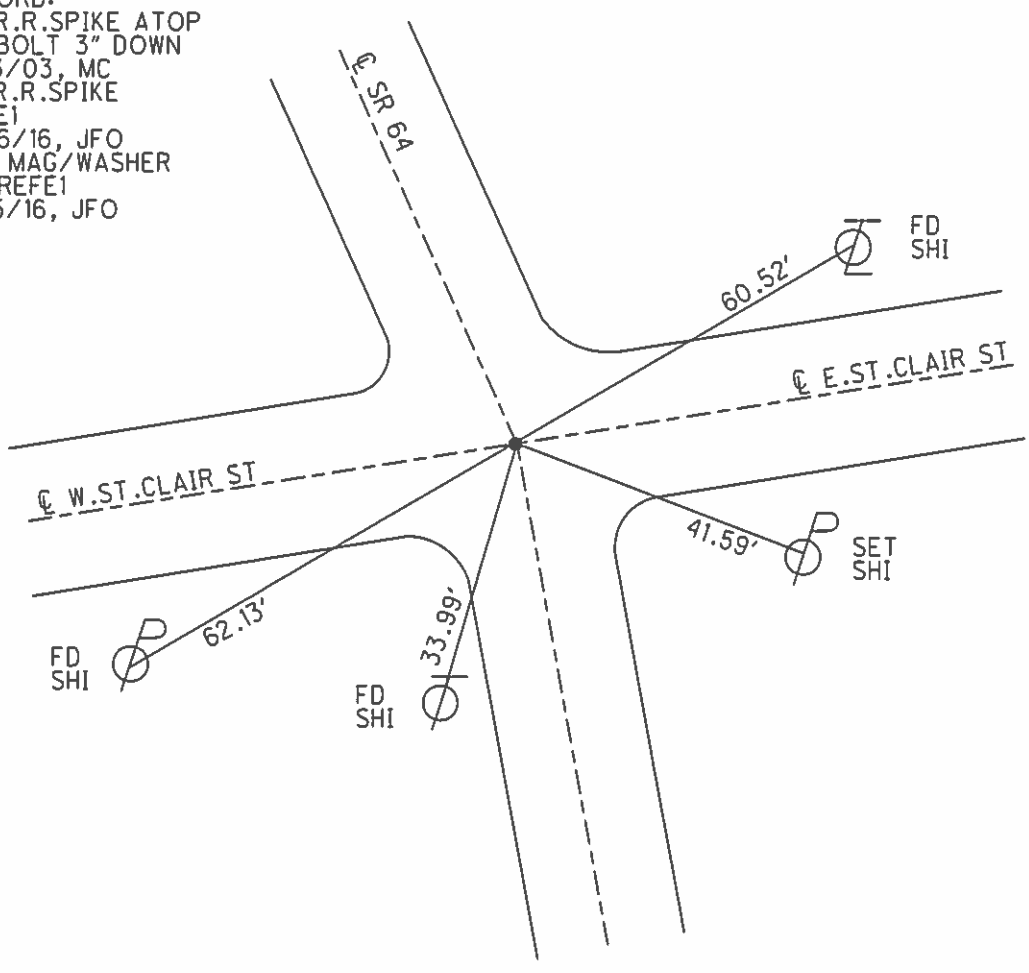
O.D.O.T. DISTRICT 2 SURVEY OFFICE (USE ONLY)

PERSONNEL \_\_\_\_\_ REFERENCE NO. 1 E SHEET 7 OF 22  
 NOTES RHOADES DATE 7-26-16 ROUTE SR 64  
 H.C. O' DONNELL WEATHER SUNNY COUNTY FULTON  
 R.C. KEFFER TEMP. 72° TOWNSHIP SWAN CREEK  
 \_\_\_\_\_ SECTION 12  
 \_\_\_\_\_ T 7 N R 8 E

TYPE MONUMENT R.R.SPIKE  
~~ON SURFACE~~ - BELOW 3"  
~~LEFT~~ - CL PAV'T - RIGHT 2.0'  
- TO - EDGE PAVEMENT  
 S.L.M. 37+11  
 GRID: NOTHING: 702676.362 EASTING: 1588346.714



RECORD:  
 SM.R.R.SPIKE ATOP  
 SO.BOLT 3" DOWN  
 8/13/03, MC  
 FD R.R.SPIKE  
 REFE1  
 7/26/16, JFO  
 SET MAG/WASHER  
 NEWREFE1  
 11/15/16, JFO



# O.D.O.T. DISTRICT 2 SURVEY OFFICE

PERSONNEL

REFERENCE NO. 1-E SHEET 5 OF 18

NOTES CANTERBURY

H.C. NUHFER

R.C. BRUMBAUGH

DATE 8-13-03

WEATHER FAIR

TEMP. +78°

ROUTE SR 64

COUNTY Fulton

TOWNSHIP SWAN CREEK

SECTION 12

T 7 N R 8 E

TYPE MONUMENT R.R. SPK.

ON SURFACE BELOW surface

LEFT - PAV'T. - RIGHT 2.0' RT &

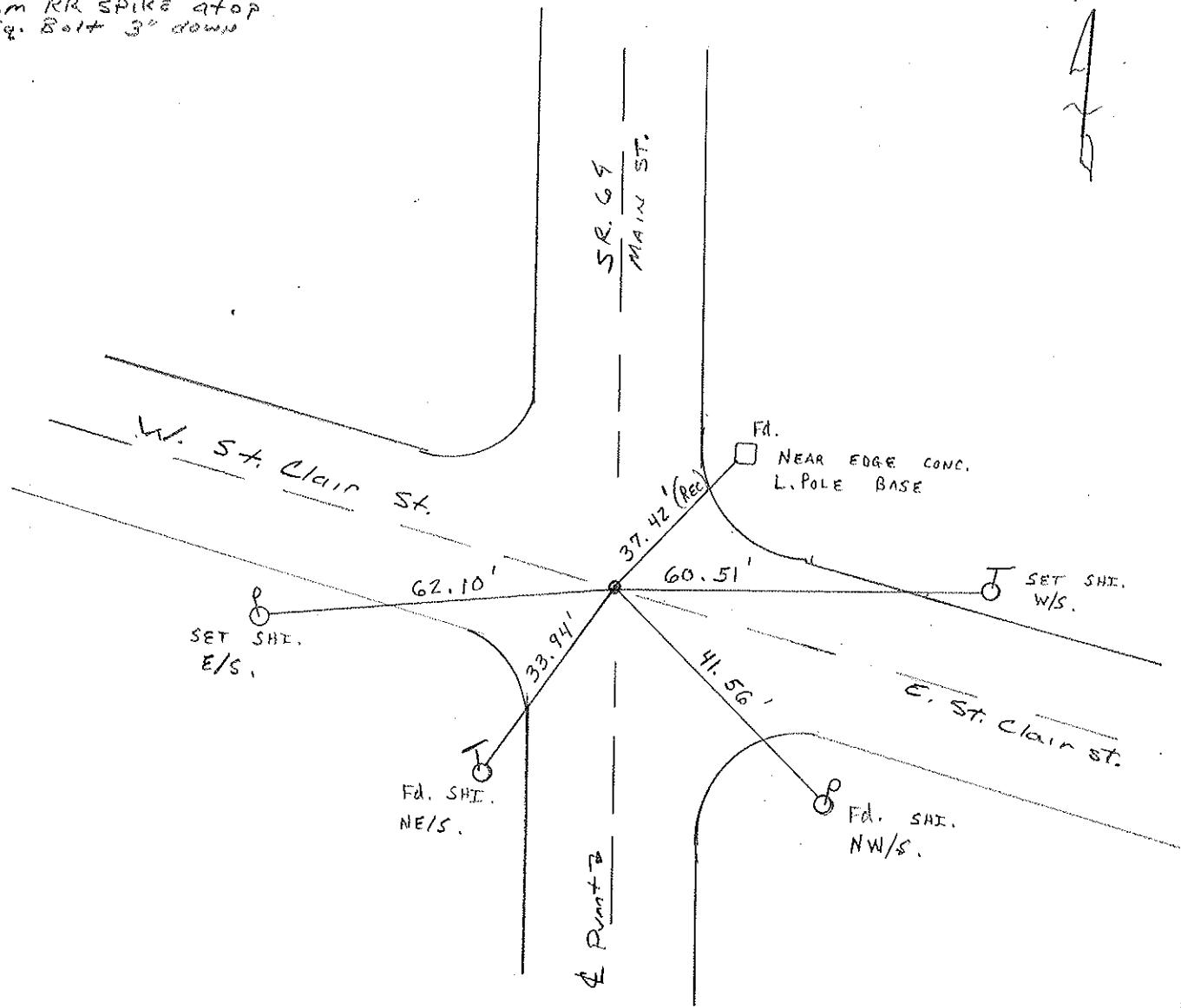
TO EDGE PAVEMENT

S.L.M. 37+11

Swan ton	
12	
CO RP	



RECORD:  
 Sm RR SPIKE atop  
 Sq. Bolt 3" down

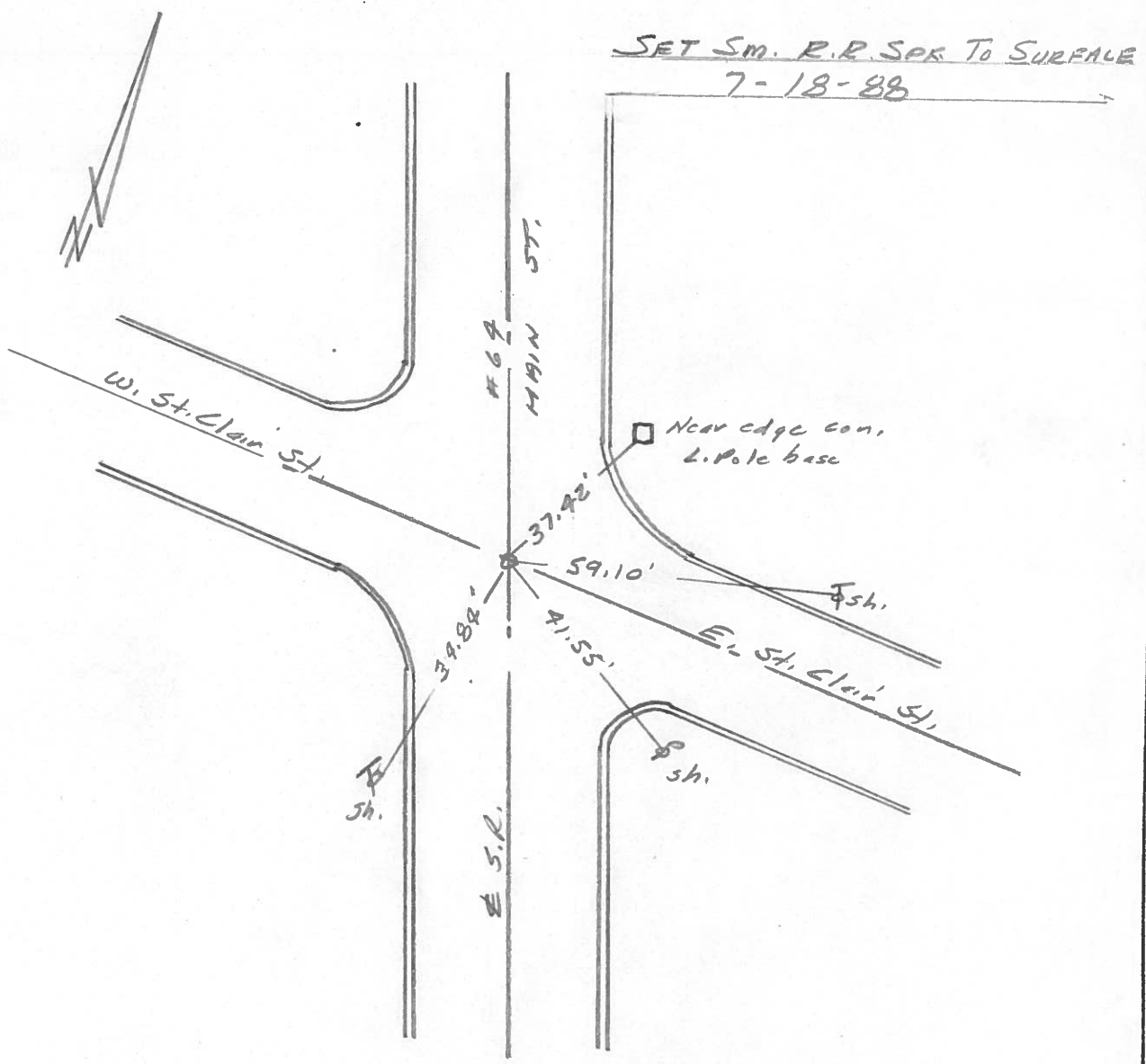


# O.D.O.T. DISTRICT 2 SURVEY OFFICE

PERSONNEL \_\_\_\_\_ REFERENCE NO. 1E SHEET 3 OF 16  
 NOTES 1. Stone  
 H.C. D. Curtis DATE 1 April 88 ROUTE SR #64  
 R.C. J. Householder WEATHER Cloudy COUNTY Fulton  
 \_\_\_\_\_ TEMP. 49° TOWNSHIP Swan Creek  
 \_\_\_\_\_ SECTION \_\_\_\_\_  
 T \_\_\_\_\_ R \_\_\_\_\_

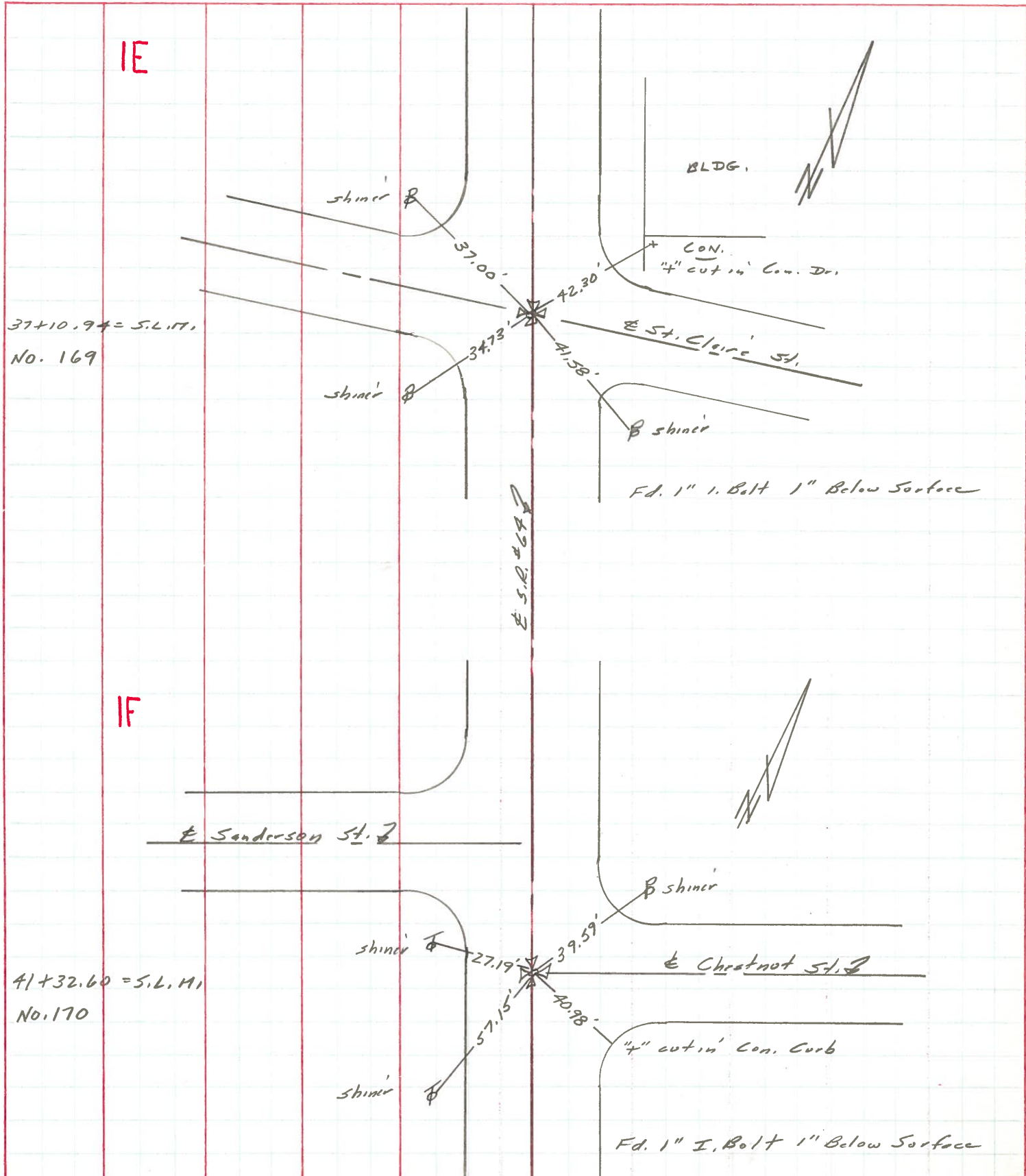
TYPE MONUMENT Square bolt  
 ON SURFACE - BELOW 3" deep  
 LEFT - & PAV'T. - RIGHT \_\_\_\_\_  
 \_\_\_\_\_ TO \_\_\_\_\_ EDGE PAVEMENT  
 S.L.M. 37+11

SWANTON	CORP
---------	------



PERSONNEL	TITLE	PERSONNEL	TITLE	COUNTY	DATE	WEATHER	TEMP.
Stone				Fulton	22 March 73	Cool	32°
Michalak				S. R. #64			
Dunn				SEC. Swanton			
Curtis							

DESCRIPTION References to Control Points JOB NO. \_\_\_\_\_  
 LEFT CENTER LINE RIGHT



PERSONNEL	TITLE	PERSONNEL	TITLE	COUNTY	DATE	WEATHER	TEMP.
Denna				Fulton	June 3, 1966	Cloudy	70°
Curtis				GA			
Oney							
Granata							

DESCRIPTION: Monument References SR. GA Swanton

