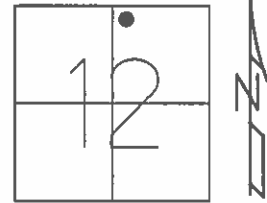


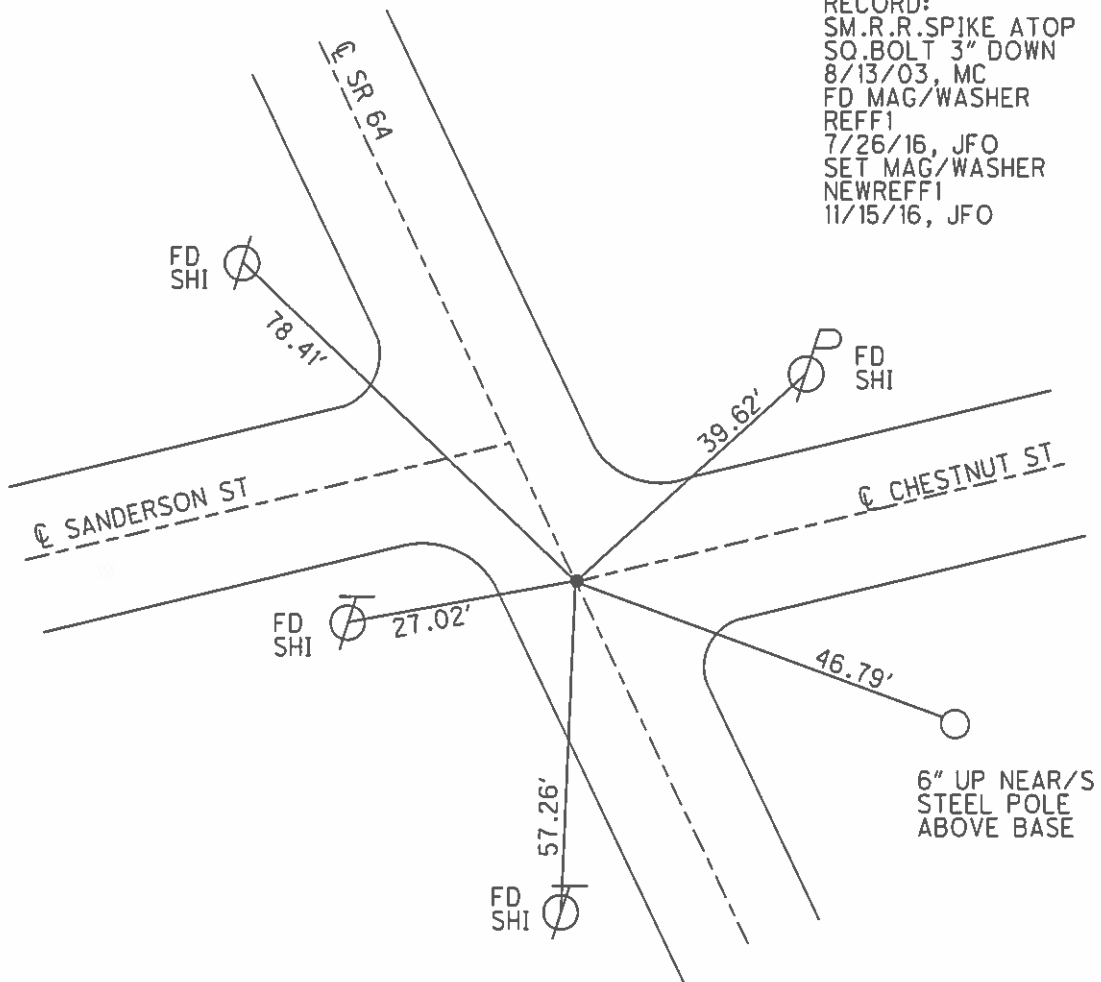
O.D.O.T. DISTRICT 2 SURVEY OFFICE (USE ONLY)

PERSONNEL _____ REFERENCE NO. 1 F SHEET 8 OF 22
 NOTES RHOADES DATE 7-26-16 ROUTE SR 64
 H.C. O' DONNELL WEATHER SUNNY COUNTY FULTON
 R.C. KEFFER TEMP. 72° TOWNSHIP SWAN CREEK
 _____ SECTION 12
 _____ T 7 N R 8 E

TYPE MONUMENT MAG/WASHER
 ON SURFACE - ~~BELOW~~ ON _____
 LEFT - ☉ PAV'T - RIGHT ON, ☉ TO E
 _____ TO _____ EDGE PAVEMENT
 S.L.M. 41+31
 GRID: NOTHING: 703051.945 EASTING: 1588156.601



RECORD:
 SM.R.R.SPIKE ATOP
 SO.BOLT 3" DOWN
 8/13/03, MC
 FD MAG/WASHER
 REFF1
 7/26/16, JFO
 SET MAG/WASHER
 NEWREFF1
 11/15/16, JFO



O.D.O.T. DISTRICT 2 SURVEY OFFICE

PERSONNEL

REFERENCE NO. 1-F

SHEET 6 OF 18

NOTES CANTERBURY

H.C. NUHFER

R.C. BRUMBAUGH

DATE 8-13-03

WEATHER FAIR

TEMP. + 78°

ROUTE SR 69

COUNTY Fulton

TOWNSHIP Swan Creek

SECTION _____

T 7 N R 8 E

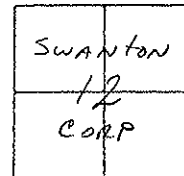
TYPE MONUMENT Sm. R.R. SPK

ON SURFACE - ~~BELOW~~ SURFACE

LEFT - ~~Q~~ PAV'T. - RIGHT ON Q ~~BOTH~~

TO EDGE PAVEMENT

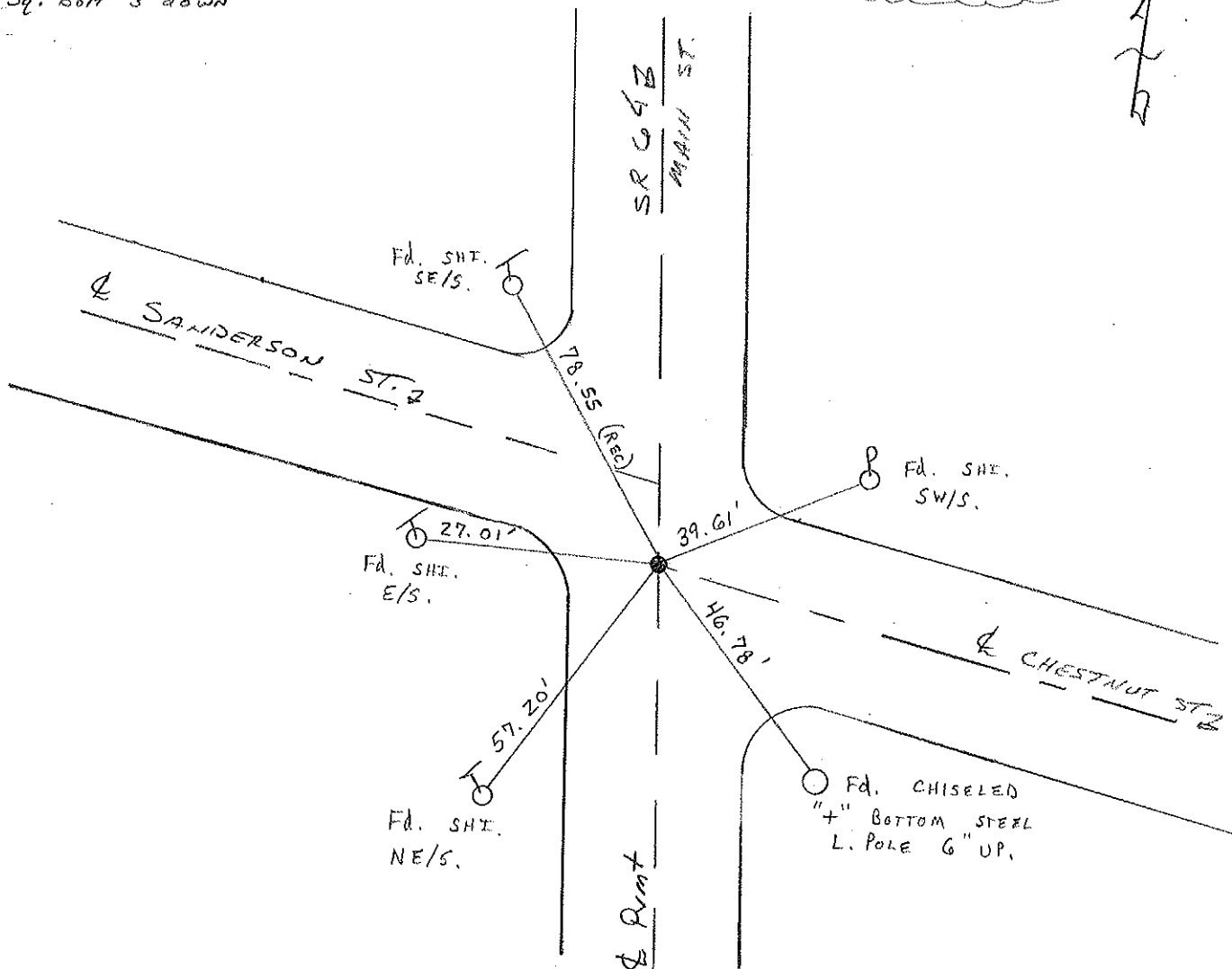
S.L.M. 41+31



RECORD:

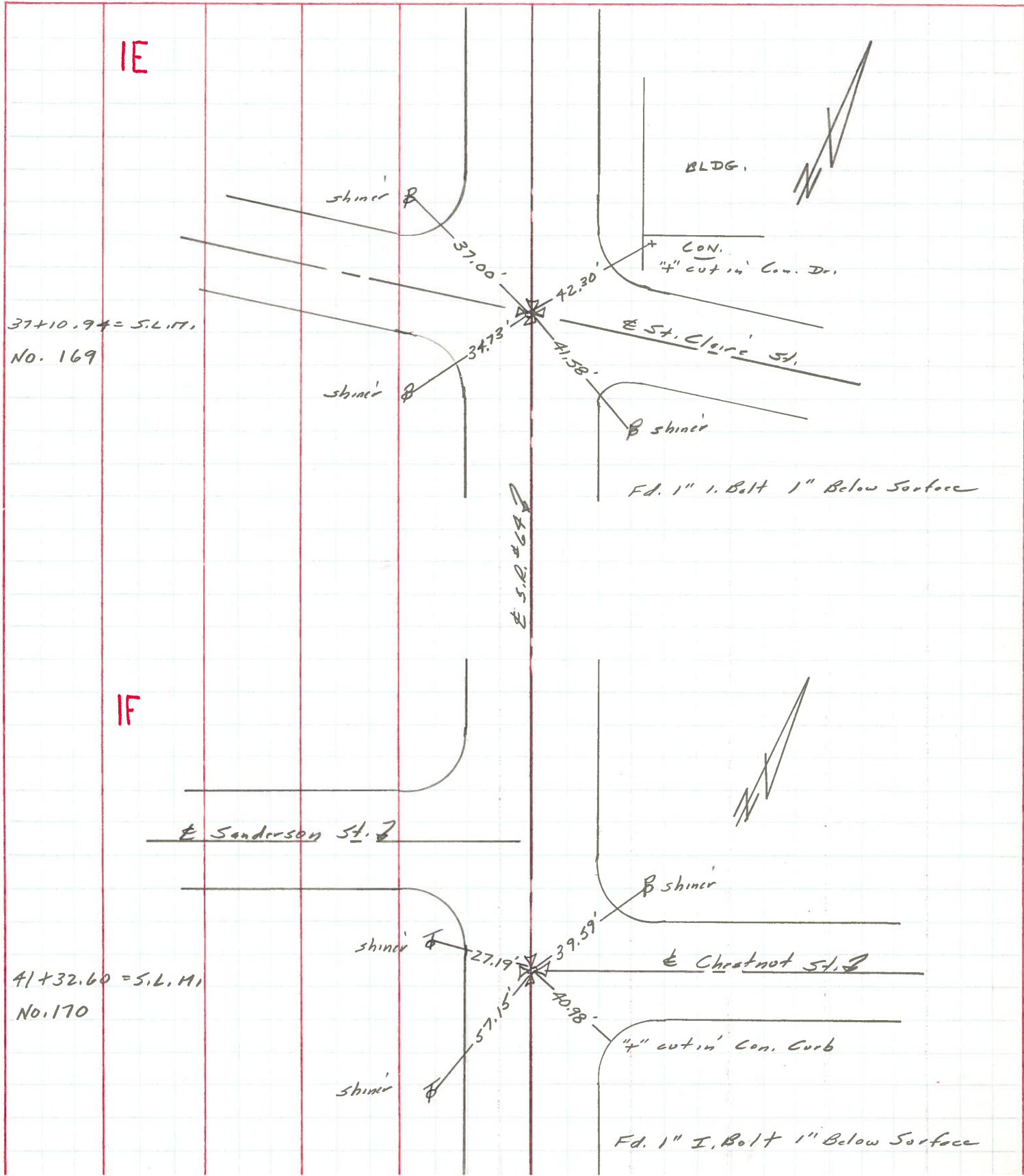
Sm. RR SPIKE ATOP
Sq. Bolt 3" down

RESET MAG/WASHER
 9/23/03
 M.R.C.



PERSONNEL	TITLE	PERSONNEL	TITLE	COUNTY	DATE	WEATHER	TEMP.
Stone				Fulton	22 March 73	Cool	32°
Michalak				S. R. #64			
Dunn				SEC. Swanton			
Curtis							

DESCRIPTION References to Control Points JOB NO. _____
 LEFT CENTER LINE RIGHT



O.D.O.T. DISTRICT 2 SURVEY OFFICE

PERSONNEL

REFERENCE NO. 1-F

SHEET 6 OF 18

NOTES CANTERBURY

H.C. NUHFER

R.C. BRUMBAUGH

DATE 8-13-03

WEATHER FAIR

TEMP. + 78°

ROUTE SR 69

COUNTY Fulton

TOWNSHIP SWAN CREEK

SECTION _____

T 7 N R 8 E

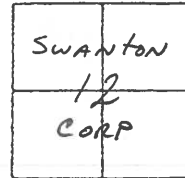
TYPE MONUMENT Sm. R.R. SPK

ON SURFACE - ~~BELOW~~ SURFACE

~~LEFT - & PAV'T. - RIGHT~~ ON & BOTH

TO EDGE PAVEMENT

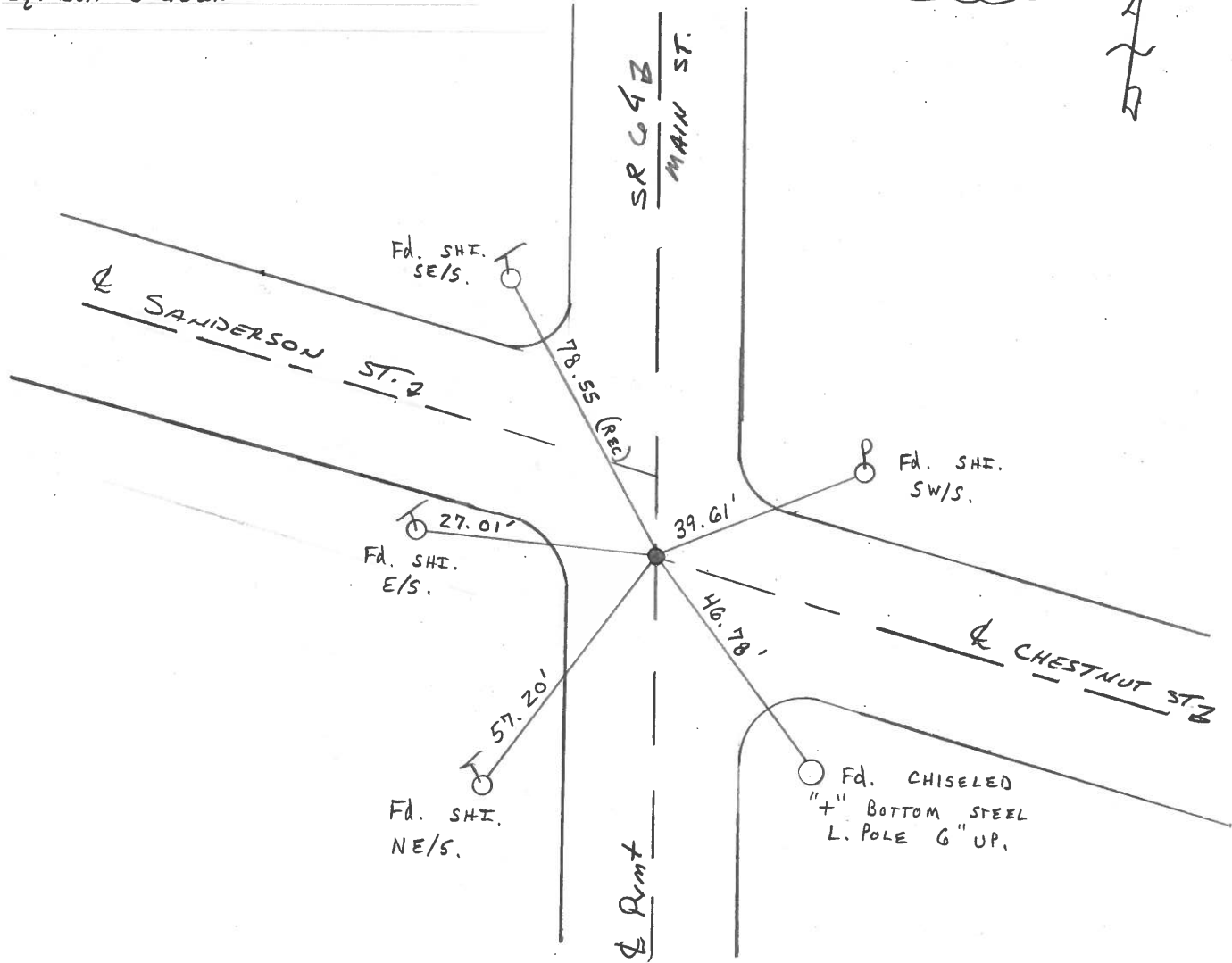
S.L.M. 41+31



RECORD:

SM. RR SPIKE ATOP
Sq. Bolt 3" down

RESET MAG/WASHER
9/23/03
M.R.C.



O.D.O.T. DISTRICT 2 SURVEY OFFICE

PERSONNEL

REFERENCE NO. IF

SHEET 4 OF 110

NOTES 1. Stone

H.C. D. Curtis

R.C. J. Housholder

DATE 1 April 88

WEATHER Cloudy

TEMP. 50°

ROUTE SR #64

COUNTY Fulton

TOWNSHIP SWAN CREEK

SECTION _____

T _____ R _____

TYPE MONUMENT Square bolt

ON SURFACE - BELOW 3" deep

LEFT- & PAV'T. - RIGHT _____

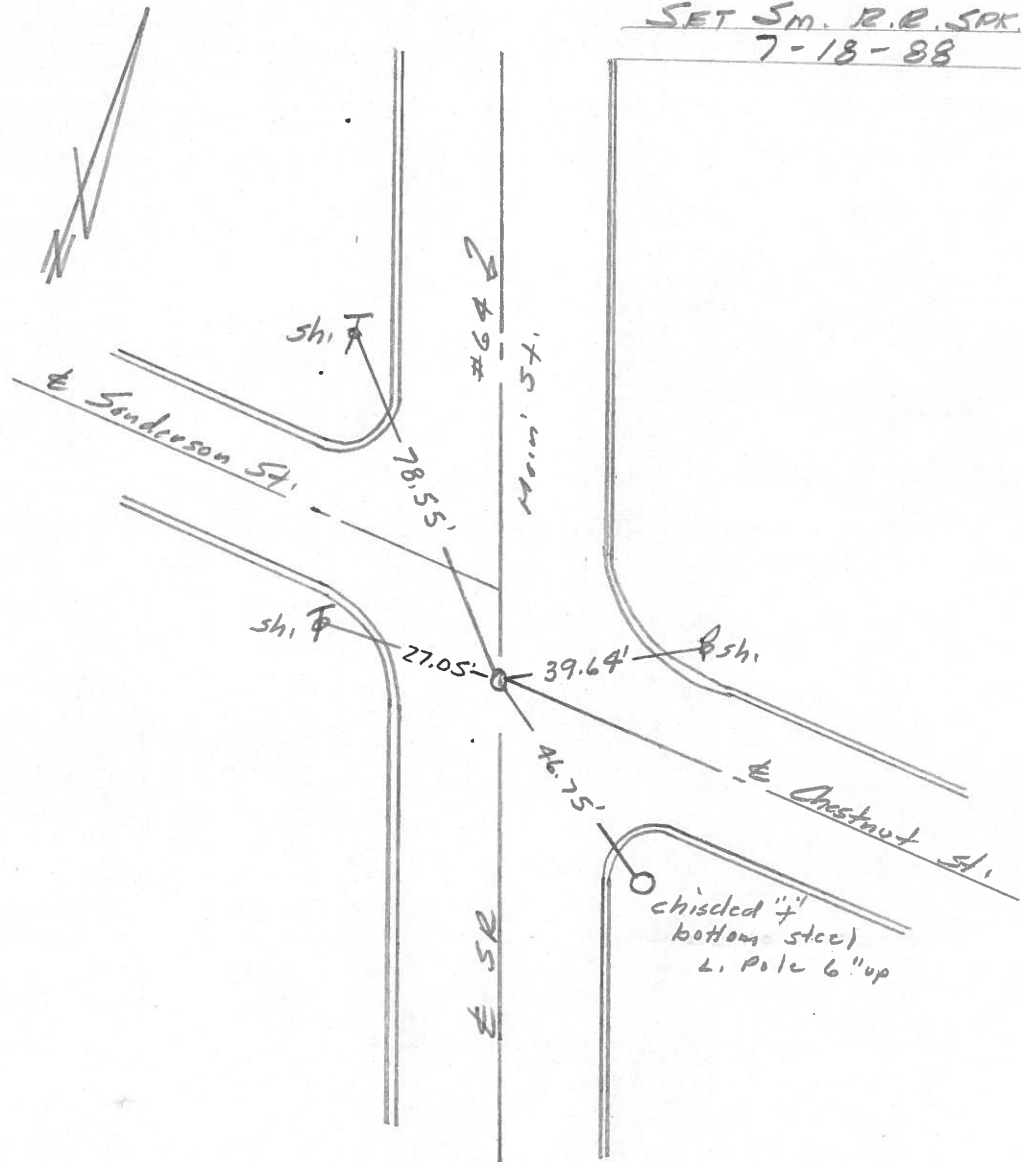
_____ TO _____ EDGE PAVEMENT

S.L.M. 41+31

SWANTON	
CORP	

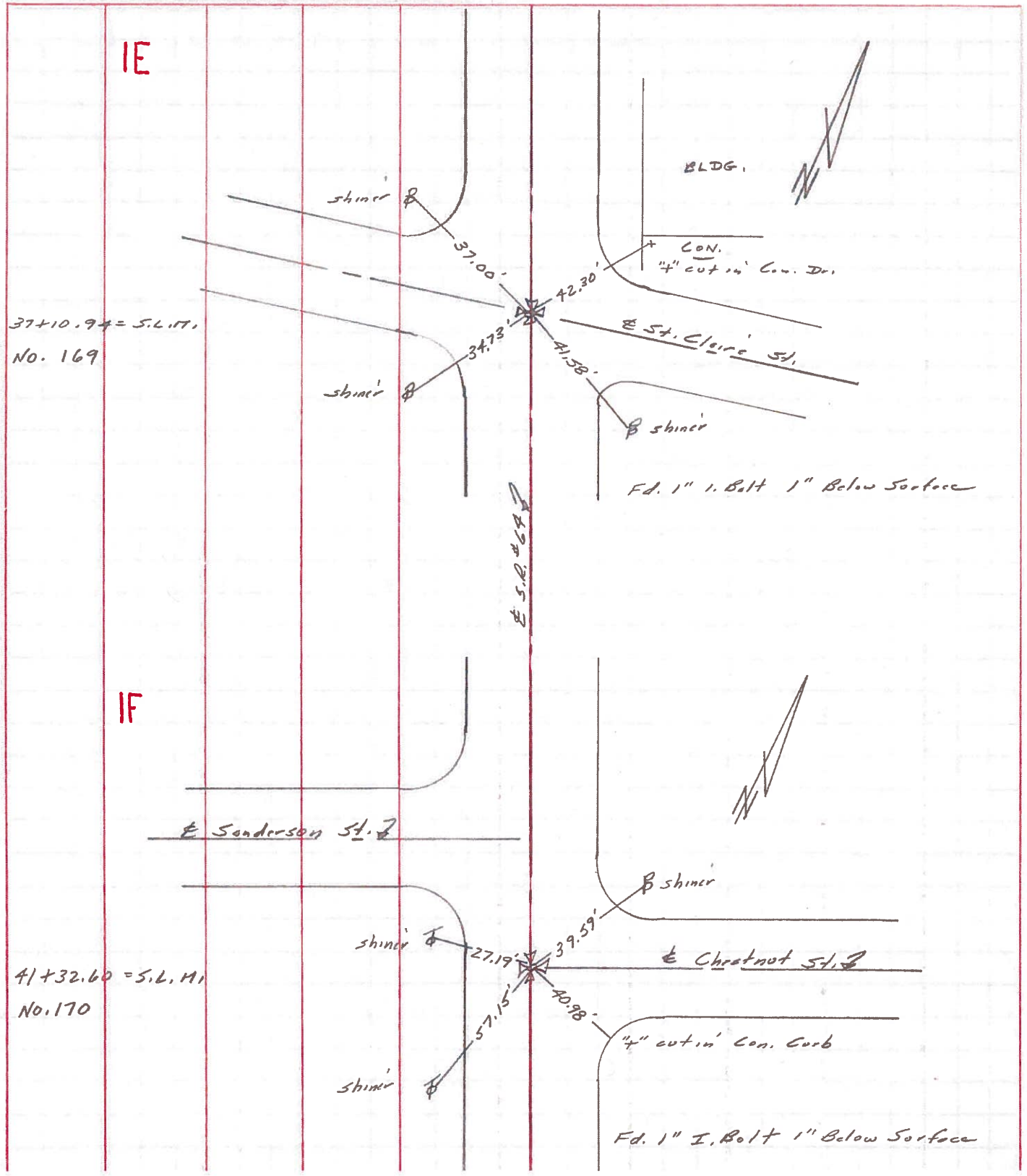


SET 5m. R.R. SPK. TO SURFACE
7-18-88



PERSONNEL	TITLE	PERSONNEL	TITLE	COUNTY	DATE
Stone				Fulton	22 March 73
Mihalok				S. R. #64	WEATHER Cool
Danno				SEC. Swanton	TEMP. 32°
Curtis					

DESCRIPTION References to Control Points LEFT CENTER LINE RIGHT JOB NO. _____



PERSONNEL	TITLE	PERSONNEL	TITLE	COUNTY	DATE	WEATHER	TEMP.
Denna				Fulton	June 3, 1966	Sunny	75°
Curtis				S. R. GA			
Granata				SEC.			
Omey							

DESCRIPTION Monument Ref. SR. 64 Swanton JOB NO. _____

